



LJMU Research Online

Taggart, K and Perley, DA

Core-collapse, superluminous, and gamma-ray burst supernova host galaxy populations at low redshift: the importance of dwarf and starbursting galaxies

<http://researchonline.ljmu.ac.uk/id/eprint/14945/>

Article

Citation (please note it is advisable to refer to the publisher's version if you intend to cite from this work)

Taggart, K and Perley, DA (2021) Core-collapse, superluminous, and gamma-ray burst supernova host galaxy populations at low redshift: the importance of dwarf and starbursting galaxies. Monthly Notices of the Royal Astronomical Society. 503 (3). pp. 3931-3952. ISSN 0035-8711

LJMU has developed **LJMU Research Online** for users to access the research output of the University more effectively. Copyright © and Moral Rights for the papers on this site are retained by the individual authors and/or other copyright owners. Users may download and/or print one copy of any article(s) in LJMU Research Online to facilitate their private study or for non-commercial research. You may not engage in further distribution of the material or use it for any profit-making activities or any commercial gain.

The version presented here may differ from the published version or from the version of the record. Please see the repository URL above for details on accessing the published version and note that access may require a subscription.

For more information please contact researchonline@ljmu.ac.uk

<http://researchonline.ljmu.ac.uk/>

Core-collapse, superluminous, and gamma-ray burst supernova host galaxy populations at low redshift: the importance of dwarf and starbursting galaxies

K. Taggart ^{1,2}★ and D. A. Perley ¹

¹*Astrophysics Research Institute, Liverpool John Moores University, 146 Brownlow Hill, Liverpool L3 5RF, UK*

²*Department of Astronomy and Astrophysics, University of California, Santa Cruz, CA 95064, USA*

Accepted 2021 January 18. Received 2021 January 18; in original form 2020 July 4

ABSTRACT

We present a comprehensive study of an unbiased sample of 150 nearby (median redshift, $z = 0.014$) core-collapse supernova (CCSN) host galaxies drawn from the All-Sky Automated Survey for Supernovae (ASAS-SN) for direct comparison to the nearest long-duration gamma-ray burst (LGRB) and superluminous supernova (SLSN) hosts. We use public imaging surveys to gather multiwavelength photometry for all CCSN host galaxies and fit their spectral energy distributions (SEDs) to derive stellar masses and integrated star formation rates (SFRs). CCSNe populate galaxies across a wide range of stellar masses, from blue and compact dwarf galaxies to large spiral galaxies. We find 33_{-4}^{+4} per cent of CCSNe are in dwarf galaxies ($M_* < 10^9 M_\odot$) and 2_{-1}^{+2} per cent are in dwarf starburst galaxies [specific star formation rate (sSFR) $> 10^{-8} \text{ yr}^{-1}$]. We reanalyse low-redshift SLSN and LGRB hosts from the literature (out to $z < 0.3$) in a homogeneous way and compare against the CCSN host sample. The relative SLSN to CCSN supernova rate is increased in low-mass galaxies and at high sSFRs. These parameters are strongly covariant and we cannot break the degeneracy between them with our current sample, although there is some evidence that both factors may play a role. Larger unbiased samples of CCSNe from projects such as ZTF and LSST will be needed to determine whether host-galaxy mass (a proxy for metallicity) or sSFR (a proxy for star formation intensity and potential IMF variation) is more fundamental in driving the preference for SLSNe and LGRBs in unusual galaxy environments.

Key words: transients: supernovae – transients: gamma-ray bursts – galaxies: dwarf – galaxies: photometry – galaxies: star formation.

1 INTRODUCTION

Massive stars ($> 8 M_\odot$) evolve rapidly, and after a short life (up to a few million years), they die in violent core-collapse supernova (CCSN) explosions. CCSNe have a profound influence on their environment: they produce heavy elements and deposit large amounts of energy into their environments, driving feedback and chemical evolution in galaxies (e.g. Chevalier 1977). In addition, because of the short progenitor lifetime, the volumetric CCSN rate is a direct tracer of star formation. Thus, CCSNe can be used to quantify the contribution to cosmic star formation from distinct galaxy sub-classes and to pinpoint rare individual star-forming galaxies, especially at low stellar mass, where galaxy catalogues are incomplete (e.g. Sedgwick et al. 2019).

Candidate CCSN progenitors are diverse, as are the explosion properties they produce. Observations of CCSN explosions and their progenitors provide a means to test theories of stellar evolution and the explosion channels of very massive stars. However, despite the importance of CCSNe to many areas of astrophysics, mapping a star's evolution (accounting for complicating factors such as metallicity, binarity, and rotation) from its beginning to end is a complex problem.

Observationally, CCSNe are classified into types I and II based on the presence (II) or absence (I) of hydrogen emission lines in their spectra at maximum light (Filippenko 1997). Some CCSN progenitors lose part/all of their hydrogen stellar envelope prior to their explosion due to stellar winds (Maeder & Meynet 2000) or binary mass transfer (Podsiadlowski, Joss & Hsu 1992) and are observed as a helium-rich (Ib and Iib) or helium-poor (Ic) stripped-envelope SNe (Smartt 2009). In recent years, due to a new generation of all-sky surveys and ever-increasing observational capabilities, many new types of stellar explosion have emerged beyond this classical picture. One example is the class of superluminous supernovae (SLSNe) which are also classified into types I and II, but whose extreme luminosities exceed ordinary CCSNe by a factor of 10–100 (Quimby et al. 2011; Gal-Yam 2012; see Moriya, Sorokina & Chevalier 2018; Gal-Yam 2019 for more recent reviews) and likely require an additional power source.

SLSNe-II are most likely powered by SN interaction with a dense circumstellar shell of hydrogen created by an ultra-massive progenitor star before the explosion (Chevalier & Irwin 2011; Ginzburg & Balberg 2012; Moriya et al. 2013) or episodic mass-loss in a pulsational pair-instability explosion (PPISNe; Woosley, Blinnikov & Heger 2007; Chatzopoulos & Wheeler 2012). However, the mechanism that powers SLSN-I is still puzzling. In theory, an extremely massive stellar core (Moriya et al. 2010; Young et al. 2010) could produce enough ^{56}Ni to power an SLSN via radioactive

* E-mail: k.taggart@ucsc.edu

decay, but mass-loss during a star's lifetime makes it difficult to retain such a massive core. Several other theoretical mechanisms have been proposed to explain SLSN-I, including interaction with non-hydrogen circumstellar-material (Chatzopoulos & Wheeler 2012; Sorokina et al. 2016; Vreeswijk et al. 2017), a Pair-Instability SN (PISN; Barkat, Rakavy & Sack 1967; Rakavy & Shaviv 1967) from a very massive *and* metal-poor star ($\sim 0.2 Z_{\odot}$; Yusof et al. 2013) or an engine-driven scenario (similar to that invoked for long-duration gamma-ray bursts) which would provide a long-lived energy source behind the SN ejecta (e.g. Kasen & Bildsten 2010; Metzger et al. 2015).

Long-duration gamma-ray bursts (LGRBs) are brief, but extremely luminous flashes of high-energy radiation associated with the formation of a relativistic jet from a 'central engine' (a fast-spinning neutron star or black hole) at the centre of a collapsing and rapidly rotating massive stellar core. While most LGRBs occur at high redshifts, events that occur sufficiently nearby are typically observed in association with CCSNe (Galama et al. 1998; Hjorth et al. 2003; Woosley & Bloom 2006); these SNe are universally luminous, helium-poor stripped-envelope SNe with broad spectral features (Ic-BL) indicating large ejecta velocities (Cano et al. 2017b).

However, despite this association, the nature of LGRB progenitors is uncertain, including whether the progenitor is a single star (Yoon, Langer & Norman 2006) or a binary system (Cantiello et al. 2007) and it is not yet firmly established whether all LGRBs occur in association with SN Ic-BL, and vice versa. Two LGRBs from 2006 have no reported SN association to deep limits (Della Valle et al. 2006; Fynbo et al. 2006; Gal-Yam et al. 2006; Gehrels et al. 2006), although it has been suggested that some SN-less LGRBs are not associated with the death of massive stars, but may be compact binary mergers with unusually long duration (e.g. Ofek et al. 2007; Kann et al. 2011). In addition, most known SN Ic-BL are found in optical surveys with no observed association with a LGRB. Some of these may represent LGRBs observed off-axis, but they could also represent events in which the jet fails to break out of the star or is not produced to begin with.

The physical powering mechanisms and progenitors of SLSNe and LGRBs are still under debate. However, it is highly unlikely that pre-explosion imaging will ever uncover the progenitor properties of SLSN or LGRBs due to a combination of their low volumetric rate (~ 1 in 1000 CCSNe; Quimby et al. 2013; Prajs et al. 2017) and their high-redshift nature: the closest SLSN discovered to date is at a distance of ~ 110 Mpc (SN 2018bsz; Anderson et al. 2018) and the closest LGRB-SN is at ~ 40 Mpc (SN 1998bw; Galama et al. 1998). This motivates the use of indirect methods to probe SLSN and LGRB progenitor properties and to constrain their poorly understood explosion mechanisms. One method is to analyse the properties of the galaxies they inhabit, to search for trends in morphology, colour, chemical composition, and star formation, which can be tied to the SN progenitor models themselves. For example, a PISN likely requires a low-metallicity, star-forming environment to produce a star with sufficient initial mass and to avoid losing its mass in line-driven winds. Single-star progenitor mechanisms for central-engine models of LGRBs also likely require a low metallicity, since line-driven winds would otherwise quickly sap the progenitor of its rotational energy. More exotically, some models postulate that LGRBs and/or SLSNe may arise as the result of runaway collisions in young and dense star clusters (van den Heuvel & Portegies Zwart 2013). In this scenario, one may expect to find SLSNe more frequently in galaxies undergoing an exceptionally high rate of star formation, even after accounting for the fact that any CCSN is proportionally

more likely to occur in a galaxy with a high star formation rate (SFR).

There is ample evidence that LGRB and SLSN-I host galaxies differ from the bulk of the star-forming galaxy population. For example, both LGRBs and SLSNe-I seem to occur preferentially in faint, low-mass galaxies with irregular structure (Fruchter et al. 2006; Neill et al. 2011; Lunnan et al. 2014; Angus et al. 2016). Japelj et al. (2016b) found the *B*-band luminosity, stellar mass, SFR and sSFR of SLSNe-I and LGRBs are statistically similar between a redshift range of $0.3 < z < 0.7$; and Lunnan et al. (2014) found that SLSN-I host galaxies at $0.1 < z < 1.6$ (discovered in the PS medium deep survey) are statistically indistinguishable from LGRB host galaxies. There is also good evidence in particular that metallicity affects SLSN and LGRB production: high-metallicity environments rarely produce LGRBs (Krühler et al. 2015; Vergani et al. 2015; Japelj et al. 2016a; Perley et al. 2016b; Palmerio et al. 2019) or SLSNe (Perley et al. 2016a; Chen et al. 2017a; Schulze et al. 2018).¹

However, population studies with larger sample sizes show that there may also be some subtle differences between the SLSNe and LGRBs populations themselves. For example, the median half-light radius of LGRB host galaxies is ~ 1700 pc (Lyman et al. 2017), and for SLSNe it is ~ 900 pc (Lunnan et al. 2015). In addition, Lunnan et al. (2014) bolstered the PS medium deep survey SLSNe-I with SLSNe-I from the literature (typically at lower redshift) and found that SLSNe-I were statistically distinct from LGRBs, with a fainter *B*-band luminosity and lower stellar mass. Leloudas et al. (2015) suggested that on average, SLSNe-I explode in lower mass and higher sSFR than the hosts of LGRBs ($0.1 < z < 1.6$). These findings were further supported by Schulze et al. (2018), who used the largest sample size of LGRBs and SLSNe (in comparison to previous studies) and found that the *B*-band luminosity, stellar mass, and sSFR of SLSNe-I and LGRBs are statistically distinct over a redshift range of $0.3 < z < 1$.

In contrast, CCSNe have typically been found in massive spiral galaxies. In part, this was a reflection of the fact that CCSN samples (prior to untargeted all-sky surveys) were found via targeted surveys of pre-selected nearby galaxies. Therefore, CCSNe were always found in massive, nearby galaxies (most of which were massive spirals), but about half of high-redshift ($0.28 < z < 1.2$) CCSNe found blindly in deep surveys (covering small) fields of view also explode in spiral galaxies (Svensson et al. 2010), in contrast to only ~ 10 per cent of LGRB hosts.

Graur et al. (2017a, b) found that the relative rate of Ib/c stripped-envelope SNe versus non-stripped CCSNe declines in low-mass ($< 10^{10} M_{\odot}$) galaxies; they are underrepresented by a factor of ~ 3 . In addition, Graur et al. (2017a, b) also note that there appears to be a strong metallicity bias, with the relative rate of Ib/c to II SNe increasing with metallicity. However, this is not interpreted as evidence for the single-star scenario: the single-star stellar evolution models underpredict the observed absolute numbers of SE-SN; therefore, the binary scenario could be important and there could be multiple channels at play. In addition, the binary scenario can also show a strong metallicity dependence, although binary star channels are much more uncertain than the single-star channel.

¹However, this is not the entire picture since over the past few years, as the statistical sizes of nearby SLSN and LGRBs have increased, there have been a handful of cases of large spiral galaxies with high-metallicities hosting SLSN-I (MLS121104, PTF10uhf, SN 2017egm, Lunnan et al. 2014; Perley et al. 2016c; Dong et al. 2017) and nearby LGRBs (e.g. Izzo et al. 2019).

Nevertheless, there is some disagreement in the literature; Arcavi et al. (2010) found that while the relative proportion of Ic SNe versus non-stripped CCSNe decreased in low-mass galaxies, the relative rates of all other stripped-envelope SNe (Ic-BL, Ib, Iib) versus non-stripped CCSNe increased in low-mass, low-metallicity galaxies, which may be a result of a reduced metallicity-driven mass-loss causing some massive stars that would have exploded as a Ic SN in a metal-rich galaxy to retain some H and He and explode as a Ib/Iib event instead. There are also differences in the environments of stripped-envelope CCSNe themselves. Ordinary Ic CCSNe are found in more metal-rich galaxies with lower sSFRs than their more energetic Ic-BL cousins (with and without LGRB associations) that may suggest that Ic-BL harbour LGRB jets from a compact central engine, which in turn requires a low-metallicity environment, whereas ordinary Ic SNe may not require such an environment (Japelj et al. 2018; Modjaz et al. 2020).

Additionally, there are also some indications that metallicity alone may not fully explain the unusual properties of the host galaxies of SLSNe and LGRBs. In particular, many SLSN-I hosts show very high specific star formation rates ($sSFR = SFR/M_*$) as well as low metallicities, evidenced by their very high equivalent widths (Leloudas et al. 2015): as many as ~ 50 per cent of SLSNe-I are found in extreme emission-line galaxies (EELGs; Leloudas et al. 2015). While sometimes attributed to a very young progenitor that simply explodes earlier than other types of SNe (Leloudas et al. 2015; Thöne et al. 2015), it could also point towards an *intrinsic* preference in starbursting galaxies that favours the production of SLSNe, such as a top-heavy IMF (e.g. Dabringhausen, Kroupa & Baumgardt 2009) or the collisional model of van den Heuvel & Portegies Zwart (2013).

A complicating factor is that all key galaxy observational parameters we may want to use to diagnose the nature of the progenitor (e.g. stellar mass, metallicity and sSFR) correlate across the star-forming galaxy population (e.g. Tremonti et al. 2004; Salim et al. 2007). For example, a low-mass and low-metallicity galaxy tends to have a star formation history with short bursts of concentrated star formation and therefore is more likely to be observed as a starburst than a high-mass and high-metallicity galaxy. Thus, it is still unclear to what extent the environmental properties of SLSNe and LGRBs (low-mass, low-metallicity, and high sSFR) reflect their specific physical influences (progenitor and explosion mechanism).

In order to disentangle the role of metallicity and SFR and to determine if both properties are equally important in governing SLSN and LGRB production, we need an unbiased and representative sample of star-forming galaxies to provide testable predictions for where we might expect SLSNe and LGRBs to occur under various hypotheses about their formation preferences. Ideally, the sample of star-forming galaxies should be selected in the same manner as an SLSN or an LGRB – via the explosion of a massive star as detected in a time-domain imaging survey – to minimize the large methodological differences between selecting via SNe versus selecting via galaxy counts in flux-limited surveys. In other words, we require a high-quality sample of ‘ordinary’ CCSNe.

This sample must have several properties. First, it must enclose a sufficiently large volume to be representative of the average distribution of galaxies, since large-scale structure can potentially bias the galaxy population seen within smaller volumes. Secondly, the SNe must be discovered in an unbiased way (not via galaxy-targeted surveys). Thirdly, the sample must be able to securely distinguish CCSNe from Ia SNe for all transients, ideally via spectroscopy. Finally, it must have multiwavelength galaxy data from UV to NIR in order to derive physical parameters for the hosts. Few existing SN samples have these properties, and until recently, none of these

samples have been at low redshift where detailed host studies are most practical. Examples of other large, untargeted SN samples include SDSS (Frieman et al. 2008; Sako et al. 2008) and SNLS (Bazin et al. 2009) but these surveys are not spectroscopically complete, and this leads to ambiguities in the classifications.

In this paper, we address this need by compiling a large, unbiased, representative sample of CCSN host galaxies (which we assume sample the explosions of ‘typical’ massive stars, unlike SLSNe and LGRBs). We provide photometry of this sample with integrated UV-through-NIR SEDs and stellar masses and SFRs derived from these measurements. We investigate star formation within the CCSN host galaxy sample and compare to a sample of SLSN and LGRBs.

The paper is organized as follows. Section 2 describes how the transient host galaxies are selected to form our CCSN, SLSN, and LGRB samples. In Section 3, we describe our photometry method and show all other archival photometry that has been used in this paper. In Section 4, we present the methodology used to measure the SFRs and stellar masses of each host galaxy based on UV through NIR colours. In Section 5, we show our results, and in Section 6, we summarize our findings and present our conclusions. Throughout this paper, we adopt Λ CDM cosmology, with $\Omega_0 = 0.27$, $\Omega_\Lambda = 0.73$, and $H_0 = 70 \text{ km s}^{-1} \text{ Mpc}^{-1}$ (Komatsu et al. 2011).

2 HOST GALAXY SAMPLES

2.1 Core collapse supernovae

A variety of galaxy-untargeted SN catalogues exist, including the Dark Energy Survey (Flaugher 2005), Catalina Real-Time Survey (Drake et al. 2009), the Palomar Transient Factory (Law et al. 2009), SuperNova Legacy Survey (Bazin et al. 2009), Pan-STARRS (Kaiser et al. 2002), La Silla Quest (Hadjjyska et al. 2012), the *Gaia* transient survey (Hodgkin et al. 2013), SkyMapper (Keller et al. 2007), SDSS Supernova Survey (Frieman et al. 2008), and the All-Sky Automated Survey for Supernovae (ASAS-SN; Shappee et al. 2014). We drew our CCSN sample from ASAS-SN, since it is shallow ($m_{V,\text{limit}} \sim 17$ mag) but is all-sky, so the SNe it finds are bright and generally very nearby. This means that excellent photometric galaxy information exists in public catalogues and that almost all SNe are bright enough (even with small telescopes) for the global SN community to follow-up, spectroscopically classify and derive a redshift estimate. Therefore, the ASAS-SN sample is spectroscopically complete for SNe with peak *V*-band light-curve magnitudes $m_V < 15.8$ and is roughly 50 per cent complete at $m_V = \sim 17$ (Holoien et al. 2017a). This was important since we required an unambiguous sample of CCSN selected host galaxies and a reliable SN redshift estimate for our host analysis.

We compiled all spectroscopically confirmed CCSNe discovered by ASAS-SN (2013–2014, 2015, 2016, 2017; Holoien et al. 2017a, b, c, 2019), and adopted any SN classifications and redshift estimates that were updated since the initial classification was made. We also included any SNe that were not discovered by ASAS-SN, but were ‘recovered’ in their data and therefore do not have an ASAS-SN name designation. We refer to these SNe in the paper text using the designated IAU name, or the discovery group name (6 SNe) when there is no IAU name to our knowledge. For the sake of brevity, we shortened any possible supernova (PSN) object names to the first eight digits.

There were some ambiguous classifications that we removed from the sample. We removed two claimed SLSNe: ASAS-SN 15lh was classified as an SLSN-I (Dong et al. 2016), but was omitted since it was unclear whether this event was an SLSN or a tidal disruption

event (Leloudas et al. 2016; Margutti et al. 2017) and ASAS-SN 17jz was re-classified as an SLSN-II, but its classification is ambiguous; it could be a very luminous SN-II (Xhakaj et al. 2017) or alternatively it could be an AGN (Arcavi et al. 2017). In addition, we removed SN 2015bh since the classification was ambiguous. Despite having a data set spanning a 21-yr time period, it was unclear whether SN 2015bh was the terminal explosion of the star resulting in a CCSN or if it was a precursor LBV hyper-eruption (Elias-Rosa et al. 2016; Thöne et al. 2017).

We limited our sample to a declination greater than -30° because uniform, public, deep optical survey data is not available across the entire Southern hemisphere. Two supernovae (SN 2016afa and 2017ivu) have the same host (NGC 5962) and this galaxy is included twice in the host galaxy analysis. We also imposed a galactic latitude cut ($|b| > 15^\circ$) in order to eliminate the galaxies where stellar crowding significantly affects the photometry and thus remove SN 2015an, 2015W, 2016bpq, 2016G, 2017eaw, 2017gpn, ASAS-SN 17ny, 17kr, and PSNJ1828 from the sample. In addition, we imposed a minimum distance cut out to 10 Mpc, meaning that one supernova (AT 2014ge) was removed from our sample. Primarily, we made this cut since performing consistent photometry for very extended galaxies within this volume using the same methods used for more distant galaxies is difficult. Also, making this cut avoided sample overlap with the comparison sample used in this analysis [the Local Volume Legacy (LVL) survey] which is volume-complete to within ~ 11 Mpc.

Our sample is comprised of 150 SNe discovered from 2013 to the end of 2017. The redshift distribution covers the range of 0.00198–0.08, with a median value of 0.014. Table 1 details the division of transient types within our samples and a table with details of these host galaxies can be found in Appendix B1. A mosaic showing our ASAS-SN CCSN host galaxy sample is provided in Figs 1 and 2. We used methods detailed by Lupton et al. (2004) to convert PS1 *gri* images into a colour composite image. Each cutout has a constant physical size scale in the rest frame of the SN host of 21 kpc on each side and a scale bar showing an angular size of 10 arcsec is shown on each cutout.

2.2 Superluminous supernovae

We collated our initial SLSN sample based on archival SLSNe in the literature. We included SLSN hosts from Neill et al. (2011),² SUSHIES (Schulze et al. 2018), and PTF (Perley et al. 2016c). In addition, we included five candidates identified by Quimby et al. (2018) following their reanalysis of archival PTF spectra: two likely SLSNe-I (PTF12gty and PTF12hni) and three possible SLSNe-I (PTF09q, PTF10gvb, and PTF11mnb) at slightly lower luminosities ($M > -21$ mag) than the PTF sample of SLSN host galaxies by Perley et al. (2016c). These SLSN candidates and their properties are summarized in Table 2. Rest frame *g*-band magnitudes for PTF12gty and PTF12hni were taken from De Cia et al. (2018) and PTF09q, PTF10gvb, and PTF11mnb were taken from Quimby et al. (2018). Thumbnail images of each host are shown in the bottom row of Fig. 1; the physical scale is the same as for the CCSN hosts, with a yellow scale bar of 2 arcsec.

We restricted our analysis to SLSNe with a redshift of $z < 0.3$ for two main reasons. First, including distant SLSNe could have caused incompleteness in the sample due to the increased difficulty

in spectroscopically confirming members of this class without a bright associated host galaxy. Secondly, we wanted to reduce cosmic evolution effects when comparing to the $z \sim 0.014$ CCSN sample. After making this cut and excluding PTF09q, PTF10gvb, and PTF11mnb, our final statistical sample consisted of 29 SLSNe-I and 21 SLSNe-II in total.

2.3 LGRBs

Our LGRB sample consists of all $z < 0.3$ LGRBs discovered prior to the end of 2017 with an associated optical counterpart: a supernova, an optical afterglow, or both. The requirement for an optical afterglow was imposed to better match the optical selection of SNe used for comparison and to ensure a high degree of confidence in the host-galaxy association: while many additional low- z LGRBs have been reported based on X-ray associations alone, it is difficult to rule out the possibility that these are higher- z events seen in coincidence with a foreground galaxy. This sample was comprised of 17 LGRBs; 12 of which had confirmed SN associations and 5 without any reported SN (see Table 3).

Of the five LGRBs without reported SNe, two were highly publicized events from 2006 (LGRBs 060505 and 060614) for which an SN was ruled out to deep limits (Fynbo et al. 2006; Gal-Yam et al. 2006; Della Valle et al. 2006; Gehrels et al. 2006). These appear to have genuinely different progenitors (such as compact binary mergers) and/or explosion mechanisms from ordinary SN-associated long-duration GRBs, a possibility that makes scrutiny of their host properties particularly relevant. The remaining events, LGRBs 050826, 080517, and 111225A, have relatively poor constraints on the extinction column towards the LGRB and/or on the presence of an SN peaking 1–3 weeks after the event (e.g. Stanway et al. 2015).

3 PHOTOMETRY

3.1 CCSN host multiwavelength data

The galaxies in our CCSN sample are nearby ($z < 0.08$), so most were detectable in all-sky multiwavelength surveys. Therefore, our primary image and source catalogues were public surveys. We used images from the *Galaxy Evolution Explorer* (GALEX; Martin et al. 2005), the Panoramic Survey Telescope and Rapid Response System (PS1; Kaiser et al. 2010), the Sloan Digital Sky Survey (SDSS; York et al. 2000), and the Two Micron All-Sky Survey (2MASS; Huchra et al. 2012).

Our aim was to derive consistent mass and star formation estimates for our host galaxy sample, thus we matched aperture sizes across the optical and NIR wavelengths. This was particularly important for nearby and massive galaxies, since the aperture size can significantly increase or decrease the flux measurements. In addition, the automated pipeline of GALEX, 2MASS, and WISE often incorrectly deblends galaxies with a large angular diameter on the sky and does not capture the low surface-brightness parts of the galaxy. If available, we used SDSS *ugriz* and GALEX FUV and NUV photometry from the NASA Sloan Atlas (NSA; Blanton et al. 2011). The NSA is a unified catalogue of galaxies out to $z \sim 0.05$, optimized for nearby extended objects since the flux measurements are derived from reprocessed SDSS images with a better background subtraction (Blanton et al. 2011). We used the elliptical petrosian aperture photometry, with an elliptical aperture radius defined by the shape of the light profile of the galaxy as in Blanton et al. (2011) and Yasuda et al. (2001). The NSA flux measurements were available for about half of the Northern hemisphere sample. Otherwise, we performed the photometry using

²We did not include SN1995av and SN1997cy since their classifications are unclear: SN1997cy could be a SN Ia or II and SN1995av may have been associated with a LGRB.



Figure 1. Mosaic showing RGB (*gri* PS1) colour composite images of our ASAS-SN CCSN host galaxy sample. Images labelled in white text are type II CCSNe (excluding IIb) and images in blue are stripped-envelope SNe of type Ib/c or IIb. Each image has a constant physical size scale of 21 kpc in diameter at the redshift of the host galaxy and an angular scale of 10 arcsec is shown on each individual cutout. The image of low surface-brightness SN host 16ns is after the subtraction of a bright ($m_v \sim 17$) foreground star. The SLSN candidates that were discovered in archival PTF data are also included in the last row of the figure in yellow text. The same physical size as the CCSN is used, but with a scale bar of 2 arcsec due to their higher redshift nature.

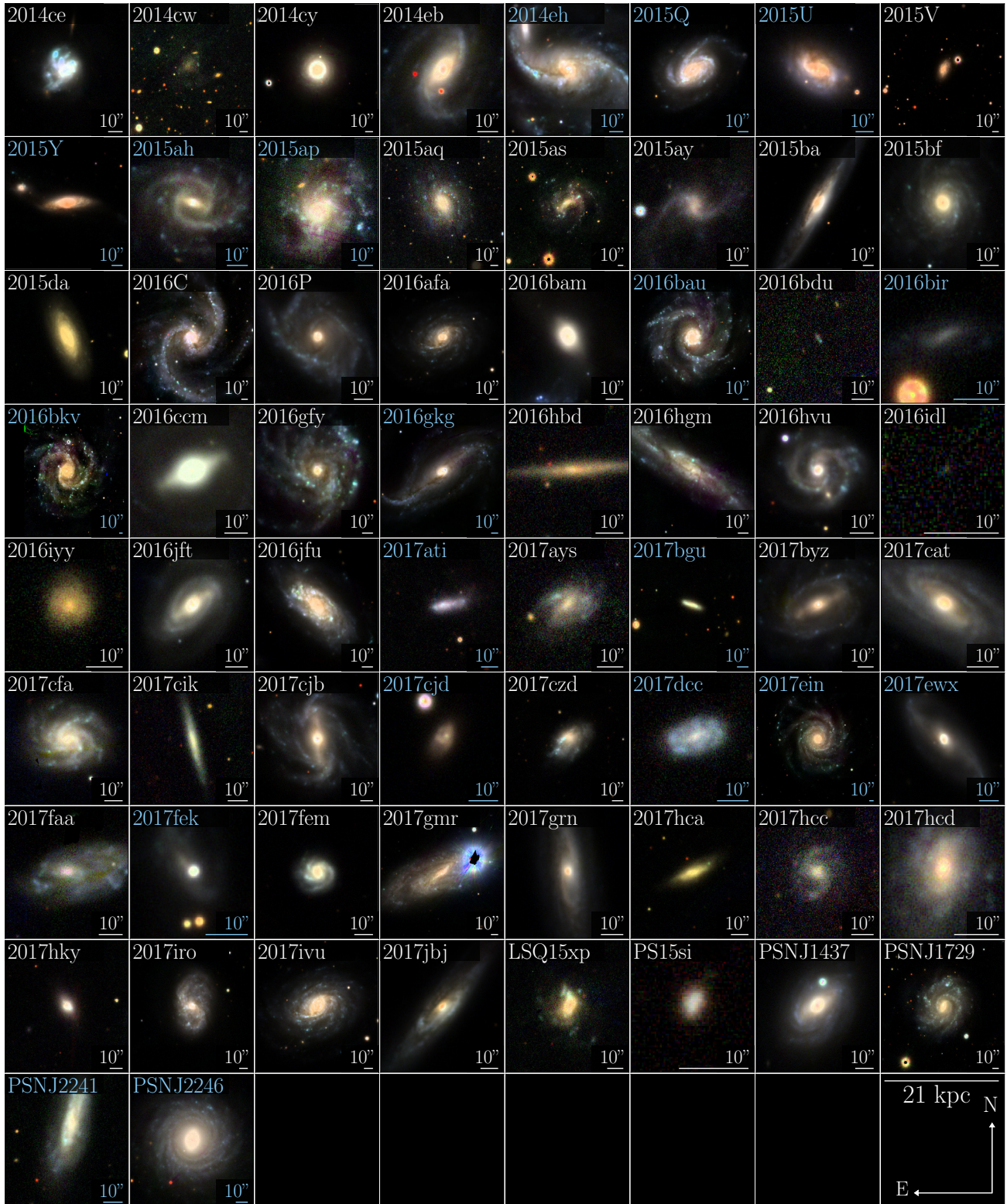


Figure 2. Mosaic showing RGB (*gri* PS1) colour composite images of hosts of additional CCSN recovered by ASAS-SN. Images labelled in white text are type II CCSNe (excluding IIb) and images in blue are stripped-envelope SNe of type Ib/c or IIb. Each image has a constant physical size scale of 21 kpc in diameter at the redshift of the host galaxy and an angular scale of 10 arcsec is shown on each individual cutout.

Table 1. Division of transient types within our samples.

Transient type	Number
CCSN-II	72
CCSN-IIIP	26
CCSN-IIb	10
CCSN-Ib/Ic	19
CCSN-IIIn/Ibn	21
CCSN-Ic-BL	2
CCSN total	150
SLSN-I	29
Possible SLSN-I	3
SLSN-II	21
SLSN total	53
LGRB-SN	12
SN-less LGRB	5
LGRB total	17

Table 2. New PTF SLSN-I candidates from archival PTF search.

PTF ID	M_{peak}	$\alpha(2000)$	$\delta(2000)$	z	$E(B - V)$
09q*	~ -20	12:24:50.11	+08:25:58.8	0.09	0.021
10gvb*	-19.6 [1]	12:15:32.28	+40:18:09.5	0.098	0.022
11mnb*	-18.9 [1]	00:34:13.25	+02:48:31.4	0.0603	0.016
12gty	-20.1 [2]	16:01:15.23	+21:23:17.4	0.1768	0.061
12hni	-19.9 [2]	22:31:55.86	-06:47:49.0	0.1056	0.054

Notes. Possible SLSNe-I from Quimby et al. (2018) are indicated by a*; host analysis is done, but not included the SLSN statistical analysis due to uncertainty about the nature of the classification. PTF09q is reclassified as an SN Ia in Modjaz et al. (2020).

References: [1] Quimby et al. (2018) and [2] De Cia et al. (2018).

Table 3. Table of LGRB sources with and without SN associations. SN names and discovery reports are referenced and photometric (P) or spectroscopic (S) reports are indicated.

LGRB	SN name	SN reference
980425	1998bw	[1,S]
020903	SN ^a	[1,S]
030329A	2003dh	[1,S]
031203	2003lw	[1,S]
050826	–	–
060218	2006aj	[1,S]
060505	–	–
060614	–	–
080517	–	–
100316D	2010bh	[1,S]
111225A	–	–
120422A	2012bz	[1,S]
130702A	2013dx	[1,S]
150518A	SN ^a	[1,P]
150818A	SN ^a	[1,S]
161219B	2016jca	[2–6,S]
171205A	2017iuk	[7–13,S]

Notes. ^aIn these cases, the LGRBs do have associated SNe but there is no known SN name designation on TNS.

References: [1] Refer to table 4 from Cano et al. (2017b), [2] de Ugarte Postigo et al. (2016), [3] Volnova et al. (2017), [4] Chen et al. (2017b), [5] Ashall et al. (2019), [6] Cano et al. (2017a), [7] de Ugarte Postigo et al. (2017), [8] Cobb (2017), [9] Prentice et al. (2017), [10] D’Elia et al. (2018), [11] Wang et al. (2018), [12] Suzuki, Maeda & Shigeyama (2019), [13] Izzo et al. (2019).

optical images downloaded from Pan-STARRS DR1 (PS1; Chambers et al. 2016; Magnier et al. 2016) and SDSS u -band if available.

We used the 2MASS extended source catalogue to obtain NIR brightness measurements in the J , H , and K_s filters (Huchra et al. 2012). If the galaxy was in the NSA, we redid the 2MASS photometry with the same axial ratio and aperture orientation and use the curve of growth technique to adjust the size of the aperture. If the galaxy was not within the NSA, we checked whether the 2MASS extended aperture (which fits an ellipse to the 20 mag arcsec⁻² isophote in the K_s band and uses a curve of growth technique to capture low surface-brightness flux of the galaxy) was adequate. In the cases of galaxies with small angular size, the aperture was usually adequate, but in the case of high-mass, extended galaxies the aperture often missed a substantial fraction of the low surface-brightness flux in the outskirts of the galaxy, thus we redid the 2MASS photometry for these sources.

3.2 Procedure for CCSN hosts

We performed aperture photometry using the PYTHON programme PHOTUTILS.³ We used an elliptical aperture and a curve-of-growth technique. We placed the elliptical aperture at gradually increasing radii, measuring the flux in each aperture until the curve-of-growth levelled, to the order of a few per cent, meaning the aperture was sufficiently large enough to include all of the host galaxy flux. We derived the uncertainties on these photometric measurements by using the galaxy aperture to determine the brightness of the background sky. We placed the galaxy aperture 30 times within the image on ‘blank’ patches of the sky, making sure there was no overlap between apertures and used the standard deviation of these measurements to derive the uncertainty.

In some cases, the galaxy was sufficiently massive and nearby that it covered a large angular diameter on the sky: placing 30 apertures of this size on blank patches of the sky was not feasible in these instances (the aperture region will always contain field sources), and in many cases the image itself was simply not large enough to place the aperture in 30 non-overlapping locations. In these cases, we removed the sources from the image and calculated the uncertainty based on the standard deviation of the sky background.

For image calibration, we used catalogues of stars (PS1 Object Catalogue, 2MASS Point Source Catalogue, and the SDSS Imaging Catalogue) to calculate the zero-point for each image. Instrumental magnitudes were calibrated directly to the AB system with photometry from PS1 and all other magnitudes were converted into the AB system (Oke & Gunn 1983). In addition, we corrected all photometry for Galactic foreground extinction (Schlafly & Finkbeiner 2011).⁴

3.3 Galaxies requiring special attention

Some host galaxies in our sample required extra care when performing photometry and when fitting SED models. These galaxies were either diffuse, low surface-brightness galaxies, galaxies which showed signs of interaction with nearby galaxies, galaxies contaminated with foreground stars (or other objects), or galaxies where

³<https://github.com/astropy/photutils/tree/v0.3>

⁴SN 2003ma pierces through the Large Magellanic Cloud. Hence, the Galactic extinction of $E(B - V) = 0.348$ mag is the lower limit of what we would expect in this direction (Rest et al. 2011).

there was some prior indication of an AGN. We briefly describe these cases below.

3.3.1 Interacting galaxies

A significant number of host galaxies (in the both CCSN and extreme-SN samples) showed evidence of physical companions, some of which appeared to be in the process of interacting or merging. Since our general philosophy was to mimic the photometry steps and subtraction we would do if the ASAS-SN galaxies were observed at $z \sim 0.2$ (for comparison to the LGRB and SLSN samples), we treated the merger as one system if it was in the advanced merger stages and would not be resolved at $z \sim 0.2$. Whereas if the galaxy could be resolved at $z \sim 0.2$, we measured the photometry of the single galaxy.

ASAS-SN 14de This galaxy was possibly undergoing an interaction or merger. This system would barely be detectable as two individual galaxies if it was discovered at a similar redshift ($z \sim 0.2$) to the SLSN or LGRB sample; therefore, we quoted two different measurements for photometry: one of the entire system and one of the single galaxy from which the SN originated.

SN 2015Y This SN exploded in NGC 2735 at $z = 0.00817$, which is interacting with MCG+04-22-003 at $z = 0.00827$. We did not include MCG+04-22-003 in the flux measurement.

ASAS-SN 16bm This host galaxy did not have a catalogued redshift. However, it was possibly undergoing an interaction or merger since the SN redshift $z = 0.007$ was similar to the redshift of a companion galaxy at $z = 0.00686$. The galaxies are 35 arcsec apart, but if the system was at $z \sim 0.2$ their centres would be separated only by 1 arcsec. Thus, this system would barely be detectable as two individual galaxies if it was discovered at a similar redshift to the SLSN/LGRB sample ($z \sim 0.2$). We quoted two different measurements for photometry: one of the entire system and one of the single galaxy from which the SN originated. We used the photometry of the system for the SED fit.

ASAS-SN 17ds This host galaxy appeared to have a companion in the PS1 imaging. However, an SDSS spectrum confirmed that the redshift of this galaxy was $z = 0.046$, compared with the host galaxy which has a redshift $z = 0.022$.

PTF12hni There was a small, red object to east of the host galaxy (see panel 5 in Fig. 1). An archival KeckII/DEIMOS spectrum from 2017 July 13 confirmed that this red object was at $z = 0.185$ and was not associated with the host galaxy with redshift $z = 0.1056$. For this reason, we were careful not to include this object in the photometry aperture.

PTF11mnb The host appeared to have a companion galaxy (see the bottom right-hand panel in Fig. 1). Thus, the galaxy on the west of the image was removed, since the low surface-brightness flux of the galaxy overlaps. We used the programme GALFIT (Peng et al. 2002) to model and subtract any contaminating objects from the image and then used the procedure outlined in Section 3.2 to perform aperture photometry on the galaxy.

3.3.2 Unclear host galaxy

SN 2016bam This SN was originally reported to TNS as being hosted by the elliptical galaxy NGC 2444, which is interacting with NGC 2445. The supernova exploded between these galaxies, so even at low redshift, this was a difficult case to judge which was the true host. At the typical redshift of SLSNe it would also be tricky. However, we made the decision to attribute this supernova to NGC 2445 (the southern object) instead of NGC 2444 because it is a star-forming galaxy and the supernova position is near (3.54 arcsec away from) an H II region associated with NGC 2445.

SN 2017ati was originally reported to TNS as a hostless supernova. However, when we looked at a larger image of the field, the SN was located between two galaxies. The SN was 36 arcsec from one galaxy nucleus and 76 arcsec from the other galaxy. This remote location is unusual for a CCSN, but these galaxies may possibly be interacting and plausibly there could be a faint (unseen) bridge of star formation between these galaxies. The redshift of the SN is consistent with the nearest galaxy (KUG 0946+674), but no spectra exist to confirm whether both galaxies are at the same redshift. This placed the supernova ~ 10 kpc (36 arcsec) away from the galaxy nucleus. Although the remote location of the supernova defied any prescriptive attempt to assign a host galaxy, in our analysis we assigned the SN to the nearest galaxy since this would be how we would treat this SN if it were at a typical SLSN redshift.

3.3.3 Foreground star contamination

ASAS-SN 14dq, SN 2014cw, SN 2016bir, and SN 2017fek These hosts were large and extended objects low surface-brightness hosts. Flux from foreground stars in these images were subtracted from these hosts.

SN 2014eh This host galaxy has a small background galaxy and a few foreground stars covering the host. We removed the flux from these stars in the images.

SN 2015V, SN 2015ay, SN 2016P, and 2016ccm These host galaxies all have bright stars (between 12 and 16 mag) nearby. Therefore in each case, the aperture was chosen carefully so that the stellar flux was not included in the flux measurements.

2017gmr There was a very bright, saturated star (HD 16152, $m_V \sim 7.1$) covering a large area (~ 50 per cent) of the host. The stellar flux was removed. However the host flux measurement was very uncertain.

ASAS-SN 16al There was a very bright star (BD-12 4185, $m_V \sim 9.8$) in the nearby field, causing large variations in the sky background. In addition, this object was aligned with many foreground stars which contributed to around 50 per cent of the light from the galaxy aperture. We modelled and subtracted these stars from images, but accurate photometry of the galaxy remained difficult. Thus we estimated the uncertainty in the removal of the foreground stars and incorporated an extra photometric error of 0.1 mag into the photometry measurements.

ASAS-SN 16ns This system had a foreground star ($m \sim 17$ mag) which masked a large percentage of the galaxy flux due to the small

and low surface-brightness nature of the galaxy. We removed this star, but the subtraction residuals remained at approximately ~ 10 per cent of the object flux in the i and z bands. Photometric uncertainties were increased accordingly.

ASAS-SN 17oj We removed foreground stars from this image. This was a low surface-brightness galaxy, so a large aperture was used to incorporate the flux in the outskirts of the galaxy.

SN 2017fek We removed multiple foreground stars from this image before we performed aperture photometry.

3.3.4 Active galactic nuclei

We checked if any of the host galaxies in our sample had an observable AGN present. First, we inspected the SDSS spectra where available (55/150 galaxies) to check for an AGN flag. Three host galaxies were flagged as an AGN in the SDSS spectra: ASAS-SN 14de (SN Ic), SN 2016afa/2017ivu (SN II/IIP), and PSNJ1437 (SN II).

The line ratio $[\text{N II}]\lambda 6583/\text{H}\alpha$ was used to identify the presence of an AGN (Baldwin, Phillips & Terlevich 1981; Carter et al. 2001). If $\log([\text{N II}]\lambda 6583/\text{H}\alpha) > -0.25$, we assumed the spectrum could be dominated by an AGN. According to this metric, only ASAS-SN 14de (SN Ic) hosts an (observable) AGN ($\log([\text{N II}]\lambda 6583/\text{H}\alpha) = -0.32$); strong $[\text{O III}]\lambda 5007$ emission confirmed it as a Seyfert II galaxy. While visual inspection of the host galaxy suggested that the AGN is unlikely to contribute significantly to the optical flux measured in SDSS/PS1, it could contribute more significantly to the IR flux, which could in turn affect the SED derived parameters including ages of the stellar populations, SFRs and also dust attenuation in the host galaxy. Hence, for 14de we excluded NIR photometry for the SED fit.

Since we did not have spectra for every galaxy in our sample, we also inspected the images of each host (see Fig. 1) to check for a clear nuclear point source. Almost all galaxies were well resolved and few showed evidence for any sort of central point source (much less a photometrically dominant AGN). However, the following sources in Fig. 1 did seem to have a red point source located at the centre of the host which could be either a galaxy bulge or an AGN: 14de (a Seyfert galaxy), 14di, 14dl, 14kg, 16am, 16go, 17br, and 17cl. The following sources in Fig. 2 also seemed to have a red point source located at the centre of the host which could be either a galaxy bulge or an AGN: SN 2014cy, 2014eb, and 2015bf. However, in all cases, given the huge and bright galaxies an AGN could not contribute much (< 20 per cent) to the integrated flux in any band relevant to our SED fitting procedure. We also checked the ALLWISE colours ($W1-W2$ and $W3-W2$) of the host galaxies as another diagnostic to test whether an AGN was present in the host galaxies (see fig. 12 of Wright et al. 2010). Aside from 14de, we found that two galaxies (15fi and 14ma) had WISE colours suggestive of a possible AGN. ASAS-SN 15fi (Mrk 0884) had an SDSS spectrum with a line ratio of $\log([\text{N II}]\lambda 6583/\text{H}\alpha) = -1.13$, therefore we estimated the maximum contribution to be ~ 15 per cent. We also obtained a spectrum of ASAS-SN 14ma in Taggart et al. (in preparation) from the WHT and we found a line ratio of $\log([\text{N II}]\lambda 6583/\text{H}\alpha) = -0.83$, indicating that AGN contribution was minimal.

3.4 Literature photometry

Photometry of the SLSN and LGRB hosts was gathered primarily from the published literature. For clarity, all sources are listed in

Table 4. New LGRB host galaxy photometry.

LGRB	Filter	AB Mag	Instrument	Date
020903	3.6 μm	22.30 \pm 0.30	Spitzer/IRAC	2006-06-07
030329A	3.6 μm	23.71 \pm 0.11	Spitzer/IRAC	2017-03-31
031203	3.6 μm	18.19 \pm 0.01	Spitzer/IRAC	2005-11-29
060218	3.6 μm	20.77 \pm 0.02	Spitzer/IRAC	2012-11-07
	4.5 μm	21.06 \pm 0.05	Spitzer/IRAC	2012-11-07
060614	3.6 μm	22.96 \pm 0.10	Spitzer/IRAC	2012-11-25
080517	J	16.90 \pm 0.14	2MASS	–
	H	17.12 \pm 0.24	2MASS	–
	K_s	16.87 \pm 0.21	2MASS	–
111225A	3.6 μm	24.00 \pm 0.30	Spitzer/IRAC	2016-12-05
120422A	3.6 μm	21.12 \pm 0.03	Spitzer/IRAC	2017-02-21
	J	20.34 \pm 0.09	P200/WIRC	2013-02-17
	K_s	20.35 \pm 0.17	P200/WIRC	2013-02-17
130702A	J	22.63 \pm 0.17	Keck/MOSFIRE	2014-06-16
	K	21.41 \pm 0.45	Keck/MOSFIRE	2014-06-16
	3.6 μm	23.80 \pm 0.30	Spitzer/IRAC	2016-11-05
150518A	u'	22.78 \pm 0.03	Keck/LRIS	2016-06-07
	J	22.07 \pm 0.14	PS1	–
	g'	21.43 \pm 0.08	PS1	–
	r'	21.25 \pm 0.13	PS1	–
	i'	20.65 \pm 0.11	PS1	–
	z'	20.80 \pm 0.34	PS1	–
	y'	19.78 \pm 0.03	Magellan/FourStar	2016-03-27
150818A	g'	22.30 \pm 0.16	P60	2016-02-14
	r'	22.10 \pm 0.20	P60	2016-02-14
	i'	21.70 \pm 0.20	P60	2016-02-14
	z'	> 21.30	P60	2016-02-14
	3.6 μm	21.89 \pm 0.05	Spitzer/IRAC	2017-02-03
161219B	3.6 μm	20.70 \pm 0.02	Spitzer/IRAC	2018-01-04

Notes. Photometry is not corrected for Galactic foreground extinction. Upper limits are $2\text{-}\sigma$. All photometry is available online in a machine-readable form.

Tables A3 and A4 and are available in a machine readable form. If the uncertainties were not given in the photometry from the literature, it was assumed that they were negligible and we therefore assign an uncertainty of 0.01 mag when performing the SED modelling.

We omitted photometric data points from the literature if they were inconsistent with the other photometric points at nearby wavelengths at high significance, if there was suspected contamination from the transient given the time that the data were taken, or (in cases where contamination with other galaxies is possible) if it was unclear whether the authors took deblending into account in their host photometry.

3.5 New LGRB and SLSN host photometry

We supplemented the SLSN and LGRB photometry from the literature with new photometry from a variety of sources, detailed below. A summary of our LGRB photometry is presented in Table 4 and a summary of our SLSN photometry is presented in Table 5.

3.5.1 Spitzer/IRAC

Most of the LGRB hosts in our sample were observed using the Infrared Array Camera (IRAC; Fazio et al. 2004) on the *Spitzer Space Telescope* (Werner et al. 2004) as part of the extended *Swift/Spitzer* Host Galaxy Legacy Survey (SHOALS; Perley et al. 2016a). These observations were generally carried out in channel 1 (3.6 μm) only, although LGRB 060218 was also observed in channel 2 (4.5 μm). We used the PBCD images from the *Spitzer* Heritage Archive and photometric techniques detailed in Perley et al. (2016b), including subtraction of all neighbouring objects that might contaminate the

aperture or sky background. Data from some archival programmes were also reanalysed using a consistent methodology. In most cases this was straightforward. In the case of LGRB 020903, isolating the host galaxy was challenging due to the presence of a dense group of merging galaxies with complicated light profiles in the foreground. The dwarf host of LGRB 130702A is part of a smaller and more distant galaxy group (Kelly et al. 2013). The companion spiral is approximately 6 magnitudes brighter and offset by 6.5 arcsec; subtraction of its halo also left some residuals in the sky background. As a result, in both these cases the uncertainty on the host flux is relatively large.

3.5.2 Keck / MOSFIRE

LGRB 130702A was observed in imaging mode using the Multi-Object Spectrograph for Infrared Exploration (MOSFIRE; McLean et al. 2010, 2012) at Keck Observatory on the night of 2014 Jun 16 in the J and K_s filters. We reduced these data using a custom pipeline. The resolution of these images (and of archival optical data) are sufficient that there are no issues with background contamination from the nearby galaxies. Aperture photometry was performed in a standard fashion using nearby 2MASS standards.

3.5.3 Palomar / WIRC

LGRB 120422A was observed with the Wide-Field Infrared Camera (WIRC; Wilson et al. 2003) on the Palomar 200-inch Hale telescope on the night of 2013 Feb 17 in the J and K_s filters. We reduced these data using our custom pipeline, which included cleaning of noise signatures associated with the replacement-detector. Aperture photometry was performed in a standard fashion using nearby 2MASS standards.

3.5.4 Palomar / P60

LGRB 150818A was observed extensively with the CCD imager on the Palomar 60-inch robotic telescope (Cenko et al. 2006) as part of a campaign to follow-up the supernova associated with this event (Sanchez-Ramirez et al. in preparation). A series of late-time reference images in $griz$ filters were taken on 2016 February 14 for the purposes of galaxy subtraction against the earlier supernova imaging; we employed these here to measure the host flux in these bands.

3.5.5 Keck / LRIS

LGRB 150518A was observed in imaging mode with LRIS (Oke et al. 1995) in the u -band filter on 2016 June 07. The observations were reduced with LPipe (Perley 2019) and aperture photometry of the host galaxy was measured relative to SDSS secondary standards in the field.

3.5.6 Magellan / FourStar

LGRB 150518A was observed in J -band with the near-infrared (NIR) camera FourStar (Persson et al. 2013) at the 6.5-m Magellan/Baade Telescope (Las Campanas Observatory, Chile) on 2016 March 27 as a part of the programme CN2016A-108. The observation sequence consisted of 39 dithered images with individual integration time of 32 s. These data were reduced with the software package THELI version 2.10.0 (Erben et al. 2005; Schirmer 2013).

3.6 CCSN distances

We did not have our own spectroscopy for each CCSN host galaxy. Thus, we obtained distances to each galaxy from redshift measurements as published in the NASA Extra-galactic Database (NED; <https://ned.ipac.caltech.edu/>) where available (114/150 galaxies).

Since the CCSNe in the sample primarily exploded in very low-redshift galaxies (median luminosity distance ~ 70 Mpc and all galaxies < 400 Mpc), they had non-negligible peculiar velocities relative to the motion due to the isotropic expansion of the Universe as described by the Hubble Flow. The fractional distance errors from peculiar velocities could have implications for the analysis of our hosts. Thus, we corrected for peculiar velocity using the velocity field model in Mould et al. (2000). This model accounted for peculiar velocities due to the Virgo Cluster, the Great Attractor and the Shapley Supercluster and was typically a 6–8 per cent correction.

If a catalogued redshift was not available for the host galaxy (34/150), we adopted the redshift of the supernova, since the SN redshift is a good estimator of the host galaxy redshift (Fremling et al. 2020). We estimated the uncertainty based on data from the Bright Transient Survey (Fremling et al. 2020). In this study the authors concluded that the standard deviation of the derived supernova redshift versus the host galaxy redshift was 0.005, therefore we adopted this uncertainty estimate in the distance.

4 PHYSICAL PARAMETERS

4.1 Spectral energy distribution fitting

To quantify the stellar parameters of the host galaxies, including stellar mass and SFR, we modelled the spectral energy distribution (SED) of each host galaxy using UV through NIR photometry. We used the code LE PHARE⁵ (Ilbert et al. 2006) which used single-age stellar population synthesis model templates of Bruzual & Charlot (2003) summed according to a single-burst of exponentially declining star formation. We assumed a Chabrier initial mass function (Chabrier 2003) and a stellar metallicity set between 0.2 and 1.0 Z_{\odot} . The contribution of emission lines to the modelled spectra was based on the Kennicutt (1998) relations between SFR and UV luminosity. The contribution of $H\alpha$ and $[O II]$ lines to the photometry was included for galaxies with dust free colour bluer than $(NUV-r)_{\text{ABS}} \leq 4$ and the intensity of the emission lines was scaled according to the intrinsic UV luminosity of the galaxy. Dust attenuation in the galaxy was applied to the SED models using the Calzetti et al. (2000) extinction law for starburst galaxies. If spectroscopy of the host galaxy was available and showed little evidence for nebular emission, we fitted a continuum driven SED model.

To calculate the uncertainties involved in deriving the mass and SFR parameters, we performed a simple Monte Carlo analysis. We chose a random number from a Gaussian distribution in flux space with standard deviation equal to the photometric uncertainty on the derived magnitude for each filter and for each host. We sampled from the distribution 1000 times and then ran the SED fit on each set of ‘noisy’ photometry and used the 16-to-84th percentile of each parameter as an estimate of its uncertainty. If the reduced chi-squared $\gg 1$ (before the Monte Carlo sampling) and the SED photometry was well-sampled in the UV, optical and IR, we applied the additional uncertainty to the photometry. We applied the uncertainty equally across all photometric points, before the Monte Carlo sampling,

⁵<http://www.cfht.hawaii.edu/armouts/LEPHARE/lephare.html>

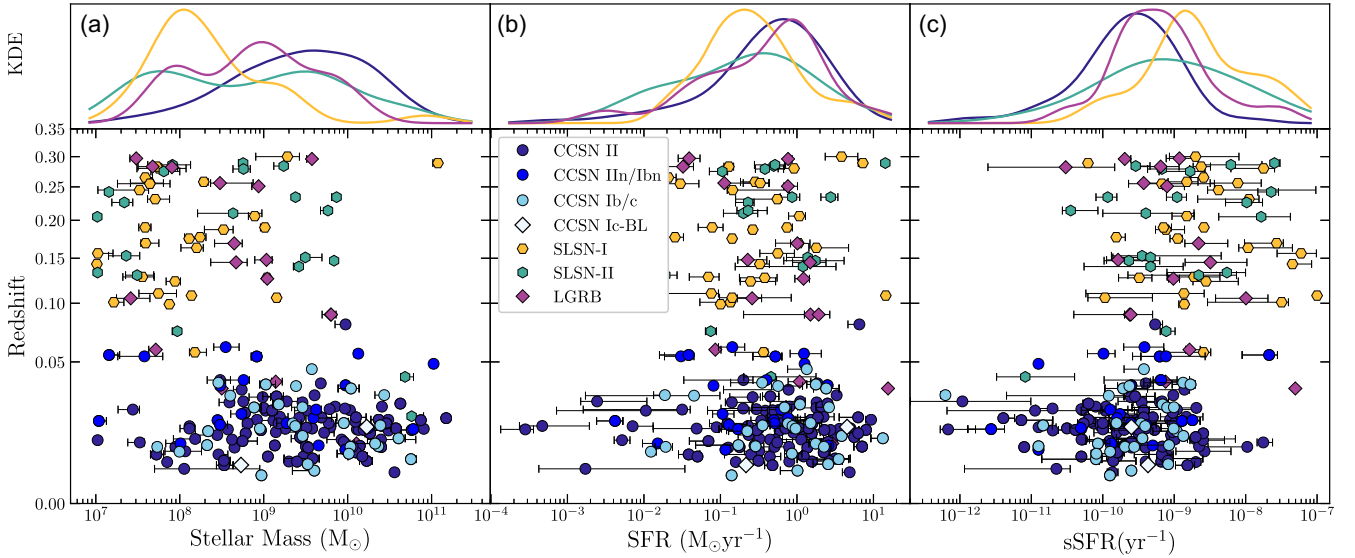


Figure 3. Distribution of the physical properties plotted against redshift for each host galaxy sample. Panel (a) shows the stellar mass, (b) the SFR, and (c) the specific SFR all plotted against redshift using a square root scale. Each upper panel is a Gaussian kernel density estimation of each physical property. For the kernel density estimation all sub-types of CCSNe are grouped together and plotted in dark blue. Redshift evolution is not corrected for in the physical parameters.

in order to more appropriately fit these data until the reduced chi-squared was approximately one, and then we re-ran the Monte Carlo sampling.

A polycyclic aromatic hydrocarbon (PAH; Leger & Puget 1984) emission feature is present within the *WISE/W1* and *Spitzer/3.6* μm bands at $z < 0.2$. In most galaxies this emission is insignificant compared to the stellar continuum. However, in low-mass galaxies with extreme star formation, this non-stellar feature can significantly contribute to the flux in the mid-IR. LE PHARE does not account for this emission feature. Thus we investigated if there was any evidence that the 3.6 μm feature may have affected the flux in this band, given our photometry. The only case where this might have been significant was for the host of LGRB 031203. However, Watson et al. (2011) studied the mid-infrared spectrum and did not find any evidence for PAH emission in the host of LGRB 031203.

4.2 Redshift evolution correction

The overall SFR density of the Universe, and of individual galaxies, rises rapidly with increasing redshift (e.g. Lilly et al. 1996), making it likely that the rare, luminous SNe that are typically found at higher redshifts than common, less luminous SNe will tend to be found in galaxies with higher SFRs simply on account of the effects of cosmic evolution. While we restricted all of our samples to relatively low-redshift ($z < 0.3$) since our ultimate goal was to compare them against each other. Fig. 3 clearly shows that there are still redshift differences between our samples—in particular, between the CCSNe (nearly all at $z \sim 0$) and the more extreme superluminous and LGRB supernovae (typically at $z \sim 0.2$).

To make a direct comparison between our samples and to avoid systematic errors introduced by cosmic evolution, we corrected for redshift evolution in SFR by empirically re-scaling all SFRs to $z = 0$. We did this by measuring the ratio between the expected SFR for a $z = 0$ galaxy on the main sequence (for a given host galaxy stellar mass) versus the expected SFR for this galaxy at the redshift of the

host $\text{SFR}_{\text{MS}(M,0)}/\text{SFR}_{\text{MS}(M,z)}$. We used this ratio to scale the measured SFR and sSFR down to $z = 0$ as in equation (1).

$$\text{SFR}_{\text{corrected}} = \text{SFR}_{\text{measured}} \frac{\text{SFR}_{\text{MS}(M,0)}}{\text{SFR}_{\text{MS}(M,z)}} \quad (1)$$

We parametrized the main sequence as a power law, as in equation (2).

$$\text{SFR}_{\text{MS}} = \text{SFR}_0 (M_*/10^{10} M_\odot)^\alpha \quad (2)$$

Parameter (α) is the slope of the galaxy main sequence and SFR_0 describes the normalization at a stellar mass of $10^{10} M_\odot$, which varies as a function of redshift. Parameters were derived from observational data in Salim et al. (2007) ($z \sim 0.1$) and Noeske et al. (2007) ($z \sim 0.36$). The approximate values are $(\text{SFR}_0 / M_\odot \text{ yr}^{-1}, \alpha) = (1.48, 0.65)$ for the galaxy main sequence at $z \sim 0.1$ and $(2.3, 0.67)$ for $z \sim 0.36$. We interpolated these parameters (α and SFR_0) over the redshift range of our sample in order to calculate the SFR of a main sequence galaxy (for a certain stellar mass) at every host redshift and at redshift zero.

We applied this correction to the sSFR and SFR for statistical comparison between the host galaxy populations of CCSNe, SLSNe and LGRBs. Once these corrections were applied, we found the median SFR was reduced by 0.02 dex for CCSNe, 0.42 dex for SLSNe-I, 0.15 dex for SLSNe-II and 0.20 dex for LGRBs. The SFR and sSFR parameters have not been corrected, unless specifically indicated in the text and figure caption. We provide the derived physical parameters from SED fits without applying this SFR correction in Tables B1–B3.

4.3 Sequence-offset parameter

As an alternative to applying a redshift evolution correction to the SFR to deal with cosmic evolution, we defined a metric of star formation intensity, the ‘sequence-offset’ parameter (ΔS). This parameter, given by equation (3), measures the ratio between the actual, SED-measured SFR of a galaxy in our sample (SFR_{host}) versus the predicted SFR (SFR_{MS}) for a galaxy on the star-forming galaxy

Table 5. New PTF SLSN host photometry.

PTF ID	Filter	AB Mag	Instrument
PTF09q	<i>u'</i>	18.20 ± 0.08	SDSS
	<i>g'</i>	17.13 ± 0.05	PS1
	<i>r'</i>	16.54 ± 0.04	PS1
	<i>i'</i>	16.14 ± 0.03	PS1
	<i>z'</i>	15.98 ± 0.03	PS1
	<i>y'</i>	15.74 ± 0.06	PS1
PTF10gvb	<i>u'</i>	21.10 ± 0.22	SDSS
	<i>g'</i>	20.14 ± 0.07	PS1
	<i>r'</i>	19.85 ± 0.07	PS1
	<i>i'</i>	19.70 ± 0.09	PS1
	<i>z'</i>	19.38 ± 0.12	PS1
	<i>y'</i>	19.89 ± 0.32	PS1
PTF11mnb	<i>u'</i>	20.42 ± 0.08	SDSS
	<i>g'</i>	19.42 ± 0.02	PS1
	<i>r'</i>	19.27 ± 0.02	PS1
	<i>i'</i>	18.96 ± 0.02	PS1
	<i>z'</i>	18.88 ± 0.03	PS1
	<i>y'</i>	18.91 ± 0.07	PS1
PTF12gty	<i>u'</i>	> 21.62	SDSS
	<i>g'</i>	> 24.23	PS1
	<i>r'</i>	> 24.27	PS1
	<i>i'</i>	23.78 ± 0.24	PS1
	<i>z'</i>	22.53 ± 0.21	PS1
	<i>y'</i>	> 24.28	PS1
PTF12hni	<i>u'</i>	20.16 ± 0.20	SDSS
	<i>g'</i>	19.19 ± 0.01	PS1
	<i>r'</i>	18.94 ± 0.03	PS1
	<i>i'</i>	18.86 ± 0.02	PS1
	<i>z'</i>	18.56 ± 0.04	PS1
	<i>y'</i>	18.50 ± 0.10	PS1

Notes. Photometry are not corrected for Galactic foreground extinction. Upper limits are 2σ . All photometry is available online in a machine-readable form.

main sequence (at the same redshift with the same stellar mass), based on the parametrization in equation (2):

$$\Delta S = \text{SFR}_{\text{host}}(M_*, z) / \text{SFR}_{\text{MS}}(M_*, z) \quad (3)$$

5 RESULTS

In this section we present the integrated galaxy properties derived from the SED fitting for nearby SLSN, LGRBs and the ASAS-SN CCSN. Basic statistical properties of each sample are summarized in Table 6. Uncertainties (1σ) are calculated using a simple bootstrap.

5.1 Basic properties of CCSN hosts and comparisons to nearby star-forming galaxies

A key goal of our study is to produce a uniform and unbiased (by galaxy mass) sample of CCSN hosts, providing a galaxy-luminosity-independent tracer of the sites of star formation in the local Universe. However, since all of our SN samples are selected via an optical search, highly dusty starbursts and SN environments are likely to be missed in this analysis (see also Appendix D for a description of the possible biases in the SN samples). While our primary motivation for this exercise will be to compare this sample to ‘exotic’ supernova types (SLSNe and LGRBs) in order to constrain their progenitors, our CCSN sample is also useful for studying the nature of star formation at low-redshift: few galaxy surveys are complete beyond the dwarf

galaxy $\lesssim 10^9 M_\odot$ limit, with those that are typically confined to small volumes.

In Fig. 4(a), we present the distribution of SFR versus stellar mass for core-collapse SNe as compared to galaxies from the Local Volume Legacy (LVL) survey of a volume-complete sample of galaxies within ~ 11 Mpc. The stellar masses of the LVL galaxies are derived from SED fits (Johnson et al. in prep) and SFRs derived from H α flux (Lee et al. 2011).⁶ Most LVL galaxies are observed to populate the main sequence of star-forming galaxies, where mass and SFR are strongly correlated in a fairly narrow band of sSFR between 10^{-9} and 10^{-10} yr^{-1} .

If the SN rate strictly tracks the SFR, then the distribution of SN host masses should follow the distribution of galaxy masses, re-weighted by SFR. As expected, CCSNe populate star-forming galaxies across their entire mass distribution, probing large spiral galaxies with stellar masses $\sim 10^{11} M_\odot$ down to the low-mass dwarf galaxy regime with stellar masses of $\sim 10^7 M_\odot$. However, the SN host mass distribution is similar to the SFR-weighted galaxy mass distribution, but they are not strictly consistent: the median SFR-weighted log stellar mass of LVL galaxies is 9.8(0.1), 0.3 dex higher than the median mass of CCSN hosts 9.5(0.1) (the associated Anderson–Darling p -value is $p_{\text{AD}} < 0.001$). This may be a result of small-scale inhomogeneities associated with the LVL covering a small volume (e.g. an overabundance of large galaxies due to large-scale structure) and demonstrates the importance of obtaining a sample selected via SNe. Similarly, small but statistically significant differences are also seen in other parameters (SFR, sSFR, and sequence offset). We find the median stellar mass 9.5(0.1) is slightly higher in comparison to the Dark Energy Survey CCSN sample of 47 objects (9.4) (Wiseman et al. 2020), but still within the uncertainties of the measurements.

A few CCSN galaxies in Fig. 4(a) show very low SFRs despite high masses – specifically 14de and 16am. Morphologically, these galaxies are not classical spiral galaxies, neither are they elliptical galaxies. These galaxies do have red colours and the uncertainties on the SFRs derived for these galaxies are likely underestimated by our SED fitting procedure at minimum. Genuine elliptical galaxies are expected to contribute very little to the cosmic supernova rate, although previous examples have been reported (e.g. Irani et al. 2019).

The fraction of star formation in very faint or very rare galaxies that are poorly probed by traditional flux- or volume-limited galaxy surveys is of particular interest. Using our sample, we measure the fraction of CCSNe in dwarf galaxies and the fraction in ‘starburst’ galaxies. We use the Bayesian beta distribution quantile technique to derive the 1σ uncertainties, following methods outlined in Cameron (2011). We find 33^{+4}_{-4} per cent of CCSNe (50/150 from our sample) occur in dwarf galaxies with stellar masses less than $10^9 M_\odot$ and 7^{+3}_{-2} per cent of CCSNe (11/150 from our sample) occur in dwarf galaxies with stellar masses less than $10^8 M_\odot$. These fractions are substantial, emphasizing the importance of dwarf galaxies to the ongoing SFR density in the local Universe, together with potential future chemical enrichment of their environments. However, only 2^{+2}_{-1} per cent (3/150) of CCSN hosts are undergoing very rapid star formation in a starburst galaxy (sSFR $> 10^{-8} \text{ yr}^{-1}$), all of which are

⁶Note that this SFR indicator is different from the one employed in our SED analysis; we provide it as a visual comparison indicator and because it has been employed as the comparison sample in earlier transient host studies (in particular, Perley et al. 2016c). We also statistically compare the LVL versus CCSN sample using both H α and UV SFRs.

Table 6. Statistical properties of galaxy samples. 10th, 50th (median), and 90th percentiles are given for each physical parameter. 1σ uncertainties are given on the median derived parameters. SFRs are not corrected for redshift evolution. Ic-BL are not included as an individual sub-type (only as part of the statistic for all sub-types) in this table since there are only two objects in this category.

Transient	N	z			$\log_{10}M_*$ (M_{\odot})			$\log_{10}\text{SFR}$ ($M_{\odot}\text{yr}^{-1}$)			$\log_{10}\text{sSFR}$ (yr^{-1})			$\log_{10}(\Delta S)$		
		10	50	90	10	50	90	10	50	90	10	50	90	10	50	90
CCSN (all sub-types)	150	0.005	0.014	0.033	8.1	9.5(0.1)	10.4	-1.4	-0.2(0.1)	0.5	-10.7	-9.6(0.1)	-8.9	-0.8	0.1(0.1)	0.7
CCSN II	98	0.005	0.014	0.025	8.2	9.5(0.1)	10.4	-1.3	-0.2(0.1)	0.6	-10.7	-9.6(0.1)	-8.8	-0.8	0.1(0.1)	0.7
CCSN IIb/Ib/Ic	29	0.004	0.014	0.035	8.3	9.5(0.2)	10.4	-1.4	-0.1(0.1)	0.4	-10.2	-9.6(0.1)	-8.9	-0.7	0.2(0.1)	0.7
CCSN IIn/Ibn	21	0.009	0.020	0.054	7.6	8.9(0.4)	10.2	-1.5	-0.4(0.3)	0.1	-10.9	-9.6(0.2)	-8.9	-0.7	-0.1(0.1)	0.3
SLSN-I	29	0.105	0.177	0.281	7.5	7.9(0.2)	9.1	-1.2	-0.5(0.2)	0.3	-9.6	-8.6(0.1)	-7.5	-0.3	0.3(0.1)	1.3
SLSN-II	21	0.074	0.210	0.284	7.2	8.8(0.5)	9.9	-1.9	-0.6(0.3)	0.2	-10.4	-9.2(0.3)	-7.8	-0.8	-0.1(0.1)	0.8
LGRB SN	12	0.033	0.146	0.280	7.7	8.7(0.2)	9.1	-1.4	-0.1(0.3)	0.4	-9.6	-9.1(0.1)	-8.5	-0.2	0.3(0.2)	0.8
SN-less LGRB	5	0.089	0.105	0.290	7.6	9.6(0.9)	9.8	-1.8	-0.1(0.6)	0.2	-10.2	-9.6(0.4)	-8.6	-1.0	0.1(0.5)	0.7

dwarf galaxies. Thus, we find the vast majority of star formation in the local Universe does not occur in starbursting galaxies. This is in agreement with the LVL survey (Lee et al. 2009) that found that only a few per cent of the galaxies are now in a bursting mode (defined in their analysis as having a $H\alpha$ equivalent width >100 Å). Brinchmann et al. (2004) estimated that ~ 20 per cent of local star formation occurs in starburst galaxies using a volume-corrected sample of galaxies from SDSS DR2, although their definition of a starburst differs from ours and is much more generous (they require that the ratio of between the present SFR and the mean past SFR (b) is 2–3, which corresponds to a specific SFR threshold of approximately $10^{-9.75} \text{ yr}^{-1}$). The fraction of strongly starbursting galaxies in SDSS is clearly much lower (see e.g. their fig. 22), but cannot easily be quantified because most such star formation is in galaxies with stellar masses below the SDSS completeness limit.

5.2 Basic properties of exotic SN hosts

In Figs 4(b)–(d), we also plot the mass and SFRs of the ‘exotic’ SN samples in comparison to local galaxies. These populations are clearly quite different from ordinary CCSNe. The peak of the SLSN-I host-mass distribution is much lower than that of the CCSN population, with a median log stellar mass of 7.9(0.2), though notably, there are a few outliers in galaxies with relatively high masses (PTF10uhf, SN2017egm, and PTF09q). SLSN-II and LGRBs with observed associated SNe lie intermediate between the SLSN-I and CCSN samples with median logarithmic mass of 8.8(0.5) and 8.7(0.2), respectively [SN-less LGRBs have masses more consistent with CCSN with a median logarithmic stellar mass of 9.6(0.9), although this is poorly constrained].

Unlike CCSNe, SLSNe and LGRBs frequently populate galaxies above the galaxy main sequence with a median logarithmic sSFR of $-8.6(0.1)$ for SLSNe-I, $-9.2(0.3)$ for SLSNe-II, and $-9.1(0.1)$ for LGRB SNe. SN-less LGRBs have sSFR of $-9.6(0.4)$, which is more consistent with the CCSN population. This effect can be seen more clearly in Fig. 5, which shows specific star formation versus stellar mass. The impartially selected CCSNe are consistent with star-forming local galaxies, whereas ~ 70 per cent of SLSNe-I lie above the star-forming galaxy main sequence with specific SFRs exceeding 10^{-9} yr^{-1} . This places many SLSN-I hosts in the top left of this diagram, with eight hosts with specific SFRs exceeding 10^{-8} yr^{-1} , which is much more than expected if the SLSN rate purely traces SFR (this has also been noted by others; e.g. Lunnan et al. 2014; Perley et al. 2016c; Schulze et al. 2018). These galaxies (with specific star formation significantly above this main sequence) are sometimes referred to as starbursts. There are 8 (~ 30 per cent) SLSN-I galaxies with specific SFRs exceeding 10^{-8} yr^{-1} (which

we will define as a ‘starburst’ for the purpose of this paper). This is in qualitative agreement with other studies, such as in Leloudas et al. (2015) where ~ 50 per cent of SLSNe-I were found in EELGs indicative of an intense starburst episode within the galaxy. Perley et al. (2016c) and Schulze et al. (2018) also noted that many SLSN-I host galaxies in PTF and SUSHIES samples are undergoing intense star formation.

5.3 Relative rates of SN sub-types

While we can qualitatively observe that the distributions of certain samples in Figs 3–5 seem similar or dissimilar, this is not a statistical statement. We employ several different methods to quantify the significance and model the nature of these apparent differences below.

5.3.1 Cumulative distribution tests

In Fig. 6, we show the cumulative distributions of mass, SFR, sSFR, and sequence offset for each of our galaxy samples. The step sizes of local galaxies in LVL are weighted by star formation to create a population consistent with one that traces star formation. The CCSNe and LVL samples have remarkably similar sSFR and ΔS distributions, while the rarer SN sub-types seem to show different distributions in most properties. These differences can be tested formally using Anderson–Darling tests.

We compute the Anderson–Darling (AD) statistic, and associated p -value, for each pair of samples and for each parameter of interest: stellar mass, SFR, sSFR, and the sequence offset parameter (ΔS). The results are summarized in Table 7. SLSN-I are statistically distinct from the CCSN in every parameter ($p_{\text{AD}} > 0.05$): mass ($p_{\text{AD}} < 1e-03$), SFR ($p_{\text{AD}} < 1e-03$), sSFR ($p_{\text{AD}} = 1e-03$), and ΔS ($p_{\text{AD}} < 1e-03$). This population shows the most divergent properties out of all galaxy samples. SLSN-II fall intermediately between these two populations and are statistically distinct from CCSN in terms of mass ($p_{\text{AD}} = 2e-03$), SFR ($p_{\text{AD}} = 5e-03$), and sSFR ($p_{\text{AD}} = 3e-03$).

5.3.2 Relative rate formalism for univariate comparisons

While the Anderson–Darling tests above confirm that differences exist between some distributions, they do not tell us anything about the degree or quantitative nature of the differences between any two distributions.

To gain further insight into the differences between the distributions of different samples, we define a new quantity which we refer to as the *relative rate* (designated \mathfrak{R}). This quantity measures how more frequent a specific type of SN (type ‘A’, typically an exotic class of

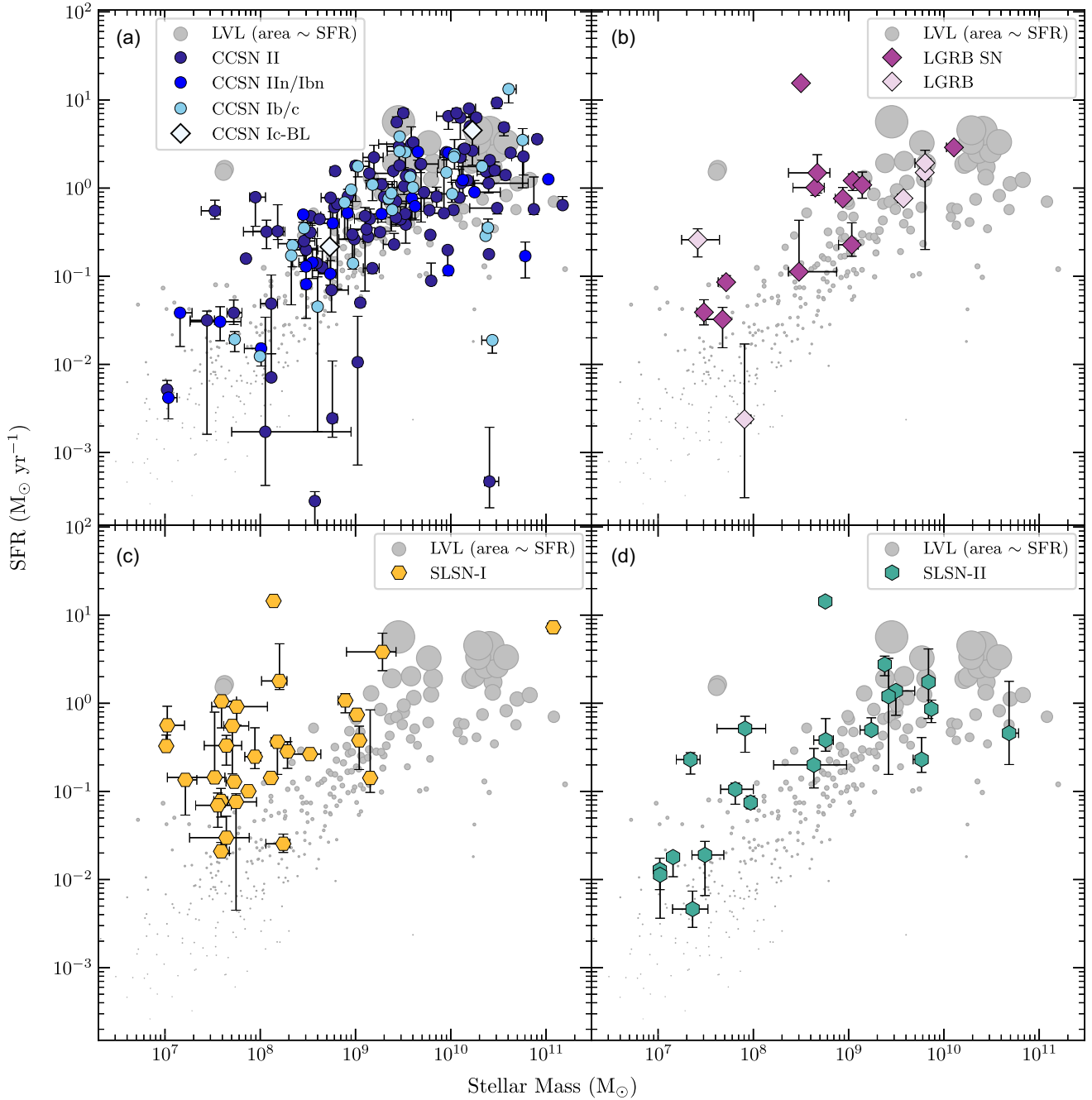


Figure 4. SFR versus stellar mass for each host galaxy class. SFR has not been corrected for redshift evolution. Grey points are the LVL survey galaxies with their sizes scaled in proportion to SFR to show the probability of producing a SN per unit time. Panel (a) shows the unbiased CCSN sample divided into sub-types. Panel (b) shows the LGRB sample in purple; the darker shade indicates where the LGRB was associated with a SN or optical afterglow. Panel (c) shows the SLSN-I sample. Panel (d) shows the SLSN-II sample.

SN) is compared to another type of SN (type ‘B’, typically a normal class of SN) in a specific type of galaxy, compared to the Universe as a whole. Expressed in terms of a single parameter y (which can be mass, SFR, etc.), it is the ratio of the inferred probability density functions of the two SN types:

$$\mathfrak{R}_{A/B}(y) = \frac{\text{PDF}_A(y)}{\text{PDF}_B(y)}. \quad (4)$$

A relative rate $\mathfrak{R} = 1$ for all values of y would indicate that the distributions over y for A and B are identical (although the *absolute* rates may not be the same). Otherwise, regions over y with $\mathfrak{R} > 1$ indicate environments where production of SNe of type A is enhanced relative to B; regions with $\mathfrak{R} < 1$ indicate environments where production of type A is suppressed relative to B.

In practice, we use a sliding-window method to estimate \mathfrak{R} for each parameter of interest (stellar mass, SFR, sSFR, or sequence

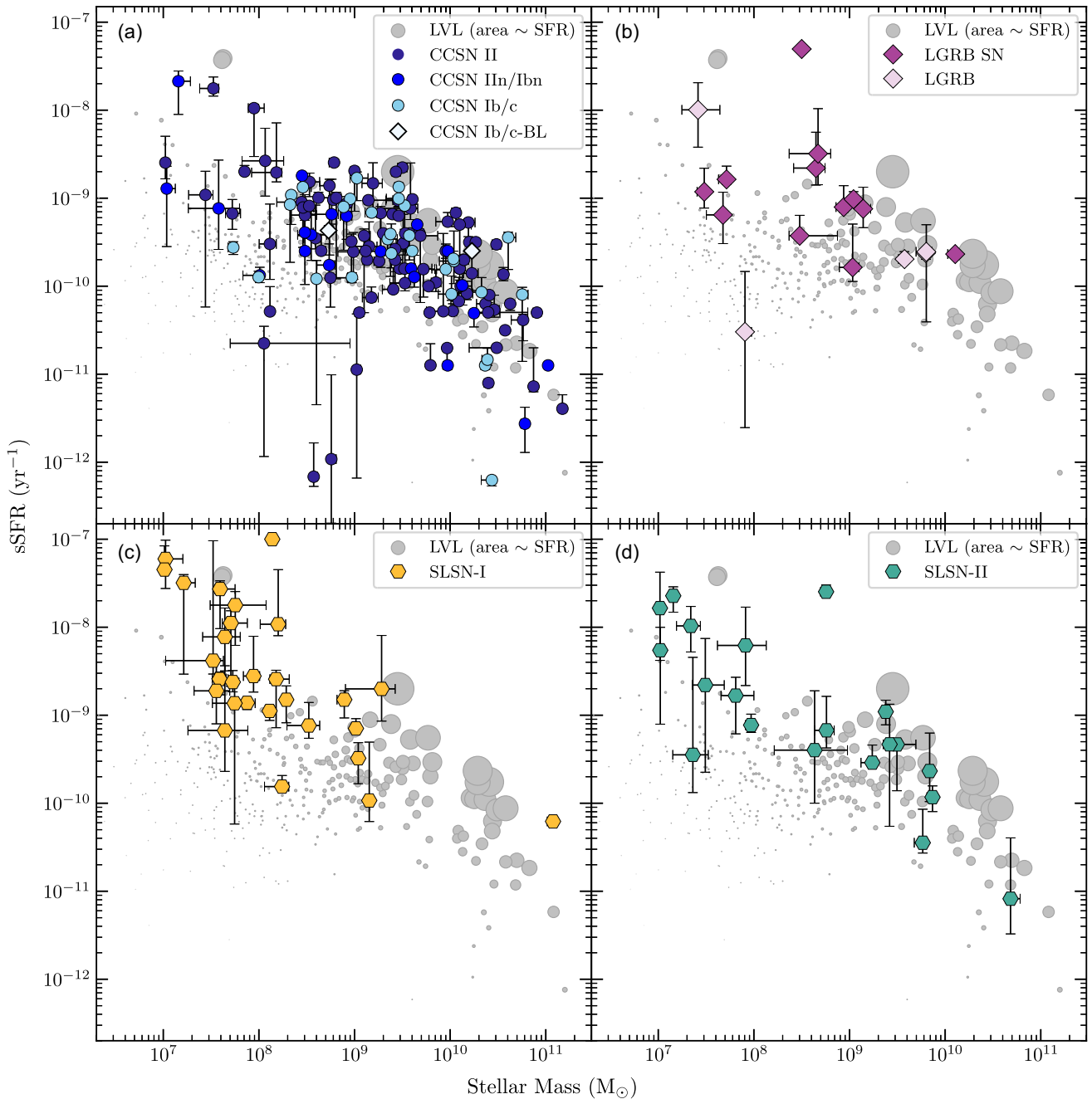


Figure 5. Specific SFR versus stellar mass. The symbols and colours are the same as in Fig. 4. As in previous figure, SFRs have not been corrected for redshift evolution. SLSN-I shows a strong preference for galaxies with high sSFR and/or low stellar mass (the top left of panel c), whereas CCSNe are broadly consistent with the distribution of LVL galaxies (panel a). SLSN-II and LGRB hosts (panels a and d, respectively) also seem to show a preference towards galaxies with high sSFR and/or low stellar mass compared to CCSNe. There are very few SLSN-II and LGRB hosts with low sSFR and high mass, but this trend is clearly not as strong as for SLSNe-I.

offset). The PDF function for each parameter for each sample (A or B) is estimated by calculating the proportion P_i of host galaxies in that sample with parameter values within ± 0.5 dex of a grid of bin centres, y_i . If the number of galaxies within ± 0.5 dex of y_i is n_i and the sample size is N , this is then (for sample A):

$$P_A(y_i) = \frac{n_{A,i}}{N_A}. \quad (5)$$

The (estimated) *relative* rate of one transient compared to another, $\mathfrak{R}_{A/B}$, is then the ratio of the two P arrays:

$$\mathfrak{R}_{A/B}(y_i) = \frac{P_A(y_i)}{P_B(y_i)} = \frac{n_{A,i}N_B}{n_{B,i}N_A}. \quad (6)$$

The bin centres are defined in logarithmic intervals of 0.1 dex, such that every 10th window has no overlap with the first. For example, the window is evaluated between a mass of $1 \times 10^6 M_\odot$ to $1 \times 10^7 M_\odot$

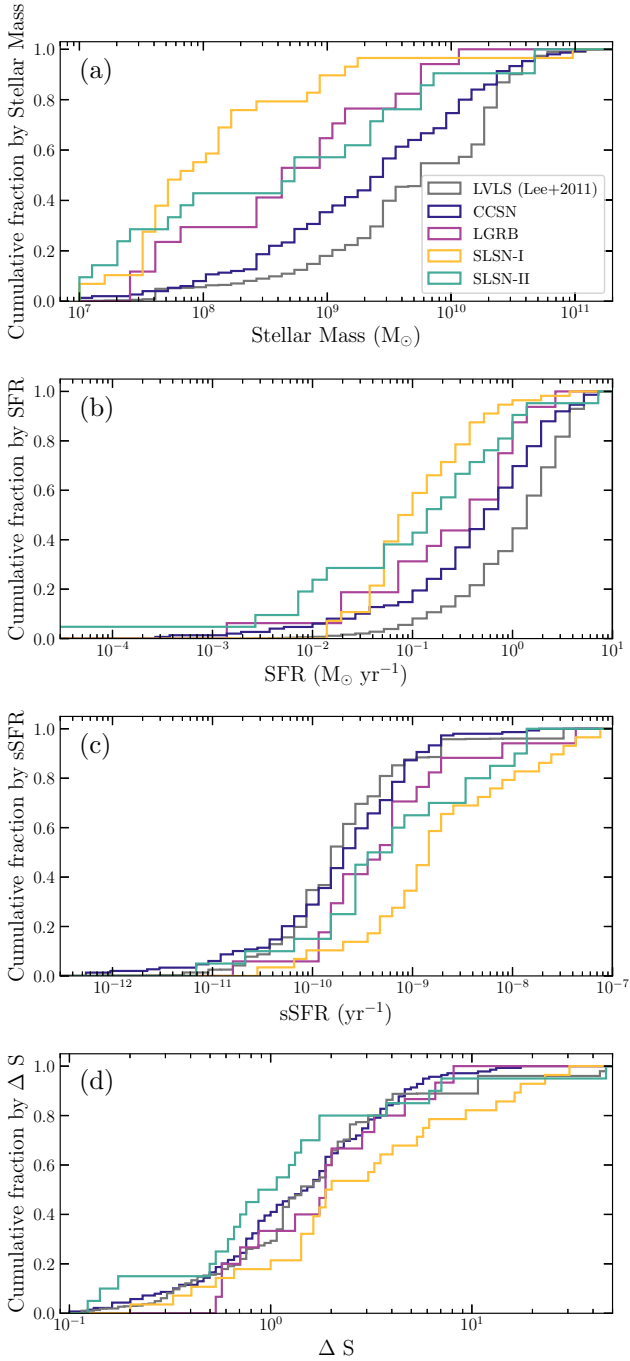


Figure 6. Cumulative distributions of the different galaxy samples with colours the same as in previous figures. We empirically re-scale all SFRs to $z = 0$ for all host galaxy samples (CCSNe, SLSNe-I, SLSNe-II, and LGRBs) using the procedure in 4.2. The LVL galaxies (in grey) are weighted here by SFR (step size) to create a galaxy population that traces star formation. Panel (a): Cumulative distributions of all galaxy populations by mass. Panel (b): Cumulative distributions of all galaxy populations by SFR. Panels (c) and (d) show measures of star formation intensity via sSFR and sequence offsets from SFR compared with the galaxy main sequence at that redshift. CCSN and the weighted LVL are similar, although not identical.

Table 7. Two sample Anderson–Darling probabilities between CCSNe, the LVL weighted by SFR, SN host galaxy samples (SLSNe-I, SLSNe-II, LGRB-SNe and SN-less LGRBs) and between LGRBs with and without supernova. We empirically re-scale all SFRs to $z = 0$ for all host galaxy samples (CCSNe, SLSNe-I, SLSNe-II and LGRBs) using the procedure in 4.2. Samples that differ at $p_{AD} < 0.05$ for that parameter are in boldface. The combined sample size of the two comparisons are given in the effective size column.

Parameter	Comparison	p_{AD} -value	Effective size
Mass	CCSN–LVL	<1e-03	350
	CCSN–SLSN-I	<1e-03	179
	CCSN–SLSN-II	1.90e-03	171
	CCSN–LGRB SN	5.67e-03	162
	CCSN–SN-less LGRB	>0.25	155
	LGRB SN–SN-less LGRB	>0.25	17
SFR	LGRB SN–SLSN-I	0.058	41
	CCSN–LVL (UV)	<1e-03	350
	CCSN–SLSN-I	<1e-03	179
	CCSN–SLSN-II	4.96e-03	171
	CCSN–LGRB SN	>0.25	162
	CCSN–SN-less LGRB	>0.25	155
sSFR	LGRB SN–SN-less LGRB	>0.25	17
	LGRB SN–SLSN-I	0.051	41
	CCSN–LVL (UV)	<1e-03	350
	CCSN–SLSN-I	1.05e-03	179
	CCSN–SLSN-II	3.36e-03	171
	CCSN–LGRB SN	2.49e-02	162
Δ SFR	CCSN–SN-less LGRB	0.059	155
	LGRB SN–SN-less LGRB	3.5e-02	17
	LGRB SN–SLSN-I LGRB	0.11	41
	CCSN–LVL (UV)	<1e-03	350
	CCSN–SLSN-I	<1e-03	179
	CCSN–SLSN-II	>0.25	171
	CCSN–LGRB SN	0.19	162
	CCSN–SN-less LGRB	>0.25	155
	LGRB SN–SN-less LGRB	>0.25	17
	LGRB SN–SN-SLSN-I	>0.25	41

(centred at $3.16 \times 10^6 M_{\odot}$), then at $1.26 \times 10^6 M_{\odot}$ to $1.26 \times 10^7 M_{\odot}$ (centred at $3.98 \times 10^6 M_{\odot}$), etc. Note that because windows within 1 dex overlap, values of \mathfrak{R} within 1 dex of each other are not fully independent.

To calculate the confidence intervals on the relative rate we draw a new CCSN sample and a new SLSN sample from the original samples (with replacement) for 1000 bootstrap iterations. We derive a relative rate for each bootstrap iteration and determine the 2σ uncertainties based on the bootstrapped relative rate function.

5.3.3 Relative rate formalism for bivariate comparisons

Testing on a single parameter at a time will not be able to distinguish between fundamental differences versus those that originate purely due to correlations with other parameters: many galaxy parameters (e.g. SFR and stellar mass) are strongly correlated, making it difficult to tell which parameter is more directly related to the special conditions that appear necessary for SLSN production or LGRB production.

However, our relative-rate formalism above can be extended to ascertain whether a difference in distributions associated with a control parameter (e.g. stellar mass) can completely explain an observed difference in distributions for another parameter (e.g. SFR). To test this, we *reweight* the comparison sample (sample ‘B’). The weights for each galaxy in the comparison sample are interpolated from the relative rate for the control parameter. For example, the host masses are weighted based on the relative rate weights for the sSFR. We use the same confidence intervals derived from the univariate bootstrap procedure and rescale them using the same factor to the weighted relative rate. We then test whether the relative rate for sample ‘A’ versus the reweighted sample ‘B’ is consistent with a constant $\mathfrak{R} = 1$ over the entire range of the test parameter.

5.4 SLSNe-I versus CCSNe

The relative rate, \mathfrak{R} , of SLSNe-I versus CCSNe is plotted in the left-hand panels of Fig. 7 as purple dashed lines with the 2σ confidence intervals in a lighter colour against sSFR, sequence offset, redshift corrected sSFR scaled to $z \sim 0$ and stellar mass. The grey line indicates the same relative rate.

SLSNe-I are enhanced in galaxies with sSFR exceeding 10^{-9} yr^{-1} (after correcting for redshift evolution) and strongly enhanced (by a factor of ~ 10) for sSFR exceeding 10^{-8} yr^{-1} . The rate is also enhanced for galaxies with a sequence offset parameter $\Delta S > 5$, which corresponds to galaxies with SFR > 5 times that predicted of galaxies on the main sequence with the same stellar mass and redshift. The bottom left-hand panel shows that the rate is increased for galaxies with stellar mass less than $2 \times 10^8 M_{\odot}$.

To investigate whether SLSN host galaxy mass (a proxy for metallicity) or specific SFR (a proxy for star formation intensity) is more closely related to the factor driving the production of these events, we must correct for the co-variation between these two parameters. As described above, we remove the effects of a possible dependence in the relative rate of SLSNe to CCSNe as a function of specific SFR by controlling for the mass dependence in order to see whether specific SFR alone can explain the overabundance of SLSN-I relative to CCSN. We also do the reverse in order to see whether a specific SFR dependence alone would explain the observed apparent mass dependence in the relative rate.

The right-hand panels of Fig. 7 show the original relative rates as a purple dashed line. The light blue and red solid lines show the rates when one controls for mass dependence or sSFR dependence, respectively. The covariance-corrected rates do appear to broadly level off (at a 2σ confidence level) to an equal rate (grey line), suggesting that either mass dependence or sSFR alone can explain the difference in relative rates between the CCSNe and SLSNe in our sample. However, in rows three and four, the covariance-corrected rates possibly significant deviance from an equal rate at sSFR $> 8 \times 10^{-9} \text{ yr}^{-1}$ and from the mass at $< 2 \times 10^8 M_{\odot}$. This may hint that the rate of SLSNe-I production is increased as a result of high sSFR and low stellar mass. A larger sample size should help to solidify this claim.

5.5 LGRBs versus CCSNe

Using the same method as described above, we also calculate the relative rate \mathfrak{R} of LGRBs versus CCSNe in Fig. 8. Given the rather limited low- z LGRB sample, the results are generally less constraining than for SLSNe, and we cannot conclusively (for any 1-dex bin) state that $\mathfrak{R} \neq 1$ for LGRBs versus SNe, given this analysis.

Formally, the relative rate of LGRBs is enhanced in galaxies with sSFRs exceeding 10^{-9} yr^{-1} (after correcting for redshift evolution) by a factor of ~ 3 ; it is enhanced in galaxies with sequence offsets > 2 by a factor of approximately 2, and it is enhanced in low-mass dwarfs $< 10^8 M_{\odot}$ by a factor of approximately 2.5. As with SLSNe, these effects are degenerate and given the small sample sizes, we cannot yet determine which parameter (if any) is the primary cause of the differences.

5.6 SLSNe-I versus LGRBs

We can also compare the LGRB and SLSN-I host populations directly against each other. In our work, we find that SLSNe-I and LGRBs are statistically consistent with being drawn from the same galaxy populations in terms of all measured parameters (see Table 7), similar to the findings of Japelj et al. (2018). However, the AD values for mass ($p_{\text{AD}} = 0.058$) and SFR ($p_{\text{AD}} = 0.051$) are right on the threshold ($p_{\text{AD}} = 0.05$) for a statistically distinct population. We do find that SLSNe-I seem to be in less massive galaxies in comparison to LGRBs. SLSNe-I have a median logarithmic stellar mass of 7.9(0.2), while LGRB SNe have a median stellar mass of 8.7(0.2). This is a similar conclusion to that found in Lunnan et al. (2014), Leloudas et al. (2015), and Schulze et al. (2018). However, we note that due to our selection of nearby events, our sample size for LGRBs is smaller than in these studies.

In terms of sSFR, we do not find any statistical differences ($p_{\text{AD}} = 0.11$). Our results are fully consistent with those of Leloudas et al. (2015) who found the median sSFR (SFR determined via spectroscopic line measurements) was more strongly star forming in SLSN-I compared to LGRBs with logarithmic sSFR of -8.53 yr^{-1} for SLSNe-I and -9.15 yr^{-1} for LGRBs. We find sSFRs $-8.6(0.1) \text{ yr}^{-1}$ for SLSNe-I and $-9.1(0.1) \text{ yr}^{-1}$ for LGRB-SNe. Both LGRBs and SLSNe-I have a higher median logarithmic sSFR than CCSNe $-9.6(0.1)$. There is a 0.5 dex difference between the median sSFR of SLSNe-I and LGRBs (although this difference statistically significant from the AD test), which is in agreement with Leloudas et al. (2015) and Schulze et al. (2018), but the comparison is somewhat limited by smaller sample of low-redshift LGRBs.

5.7 SN-less LGRBs versus LGRB-SNe

To address whether the sub-population of ‘SN-less’ LGRBs may represent a distinct class from the remainder of LGRBs, we compare the host properties of the five events above to the remainder of the sample (Table 6). While some SN-less LGRB hosts are individually unusual, their cumulative properties are not significantly different from the hosts of LGRBs with confirmed SNe (see Table 7), although the redshift corrected sSFR may show some difference ($p_{\text{AD}} = 0.04$). However, this comparison is not strongly constraining given the small size of the SN-less sample (five objects) and the possibility that some of these events hosted ordinary LGRB-SNe that were dust-obscured.⁷

6 SUMMARY AND CONCLUSIONS

In this paper, we presented photometric observations of 150 galaxies hosting CCSN discovered or observed by the ASAS-SN in order to provide the most comprehensive and unbiased comparison sample of CCSN host galaxies, and compared the properties of this sample to 70 nearby ($z < 0.3$) SLSNe and LGRB SN hosts analysed using

⁷A more detailed discussion of this issue can be found in Appendix D.

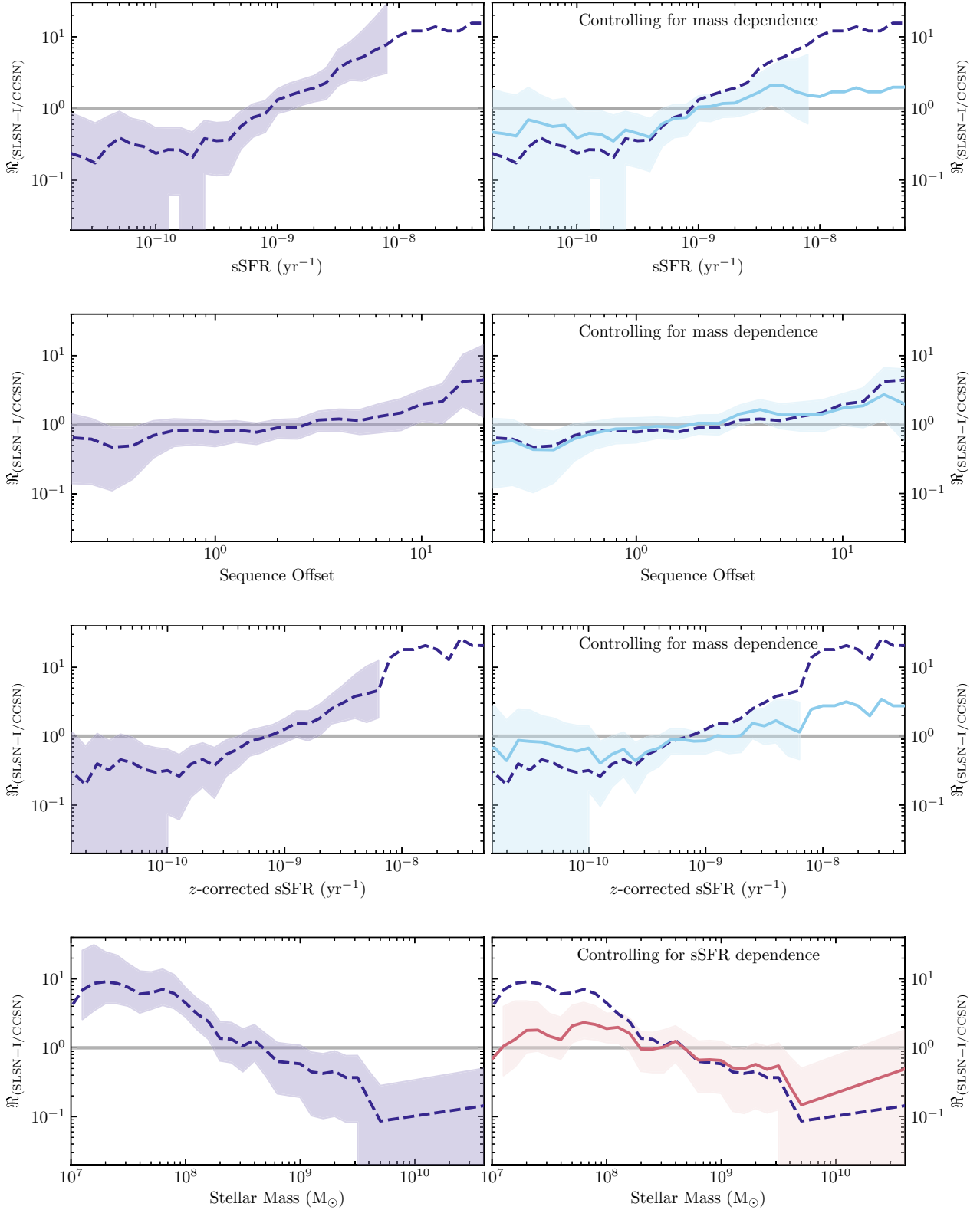


Figure 7. Relative rates of SLSNe-I to CCSNe for various host galaxy parameters. Left-hand panels show the relative rates in purple given by the dashed lines for specific SFR, sequence offset (redshift corrected to $z \sim 0$), and stellar mass in a moving window function with a width of 1 dex. The window function moves such that after it has moved 10 times it has no overlap with the first window. 2σ confidence intervals are shown in a lighter shade, and when there are too few of either samples, the confidence intervals are not shown for these regions. Right-hand panels show the same quantity, but after controlling for the modelled dependence on the alternative variable (stellar mass for SFR-related quantities, or SFR for mass-related quantities). Light blue lines are mass-controlled rates and red lines are the sSFR controlled rates.

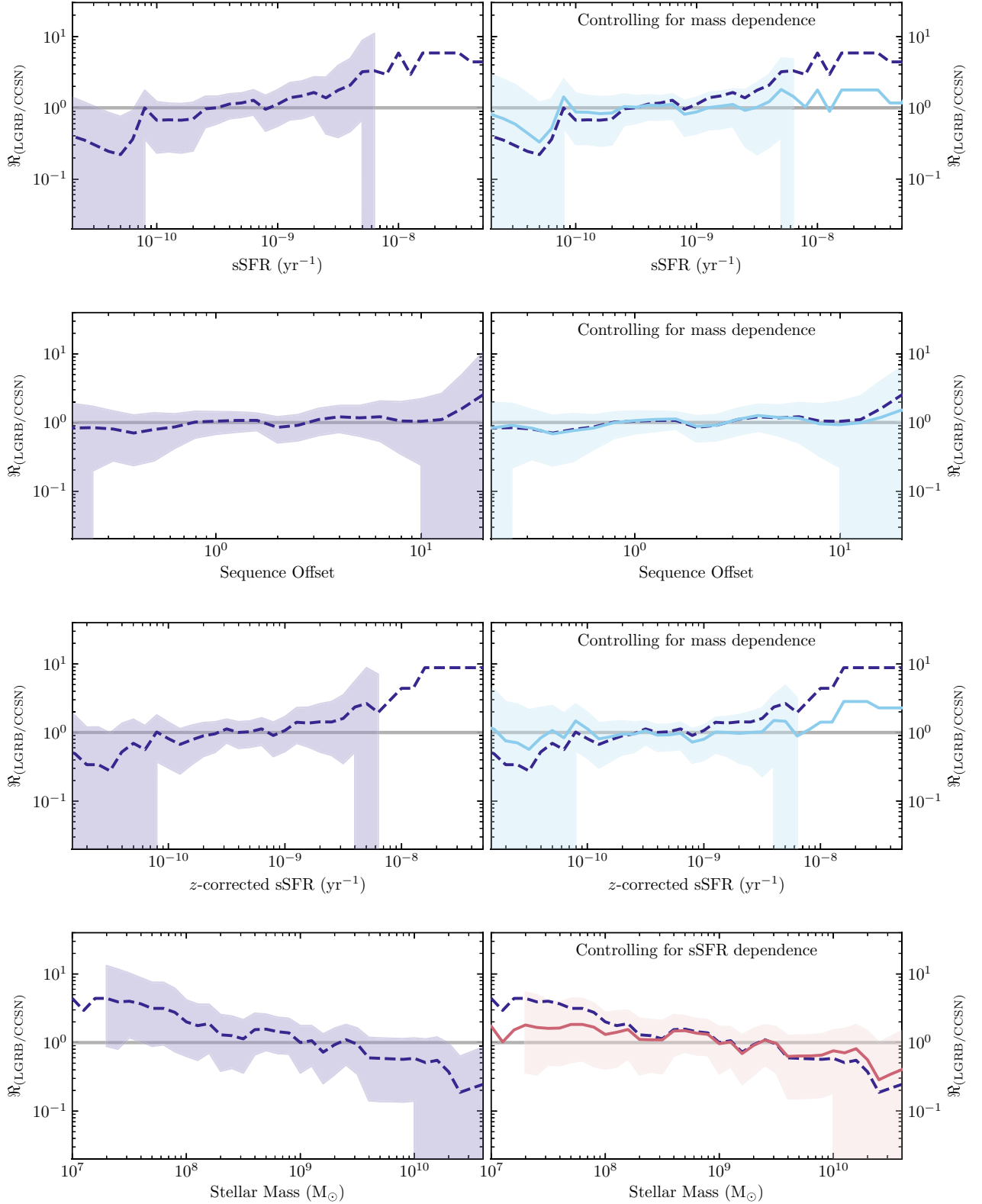


Figure 8. Relative rates of LGRBs to CCSNe for various host galaxy parameters. Left-hand panels show the relative rates in purple given by the dashed lines for specific SFR, sequence offset (redshift corrected to $z \sim 0$) and stellar mass in a moving window function with a width of 1 dex. The window function moves such that after it has moved 10 times it has no overlap with the first window. 2σ confidence intervals are shown in a lighter shade and when there are too few of either samples, the confidence intervals are not shown for these regions. Right-hand panels show the same quantities, but after controlling for the alternative variable as in Fig. 7. Light blue lines are mass-controlled rates, and red lines are the sSFR controlled rates.

a consistent methodology. Our key conclusions are summarized as follows:

(i) CCSNe generally exhibit similar star formation properties to star formation-weighted local galaxies (LVL), consistent with the expectation that CCSNe should trace star formation. However, we find the CCSN-selected galaxy stellar mass distribution to be weighted towards slightly lower-mass galaxies 9.5(0.1) than the SFR-weighted LVL galaxy stellar mass distribution with median log stellar mass of 9.8, possibly indicating that the local-volume sample is not truly representative of the average distribution of low-redshift galaxies.

(ii) 33^{+4}_{-4} per cent of CCSNe (50/150) from our sample occur in dwarf galaxies with stellar masses less than $10^9 M_{\odot}$ and 7^{+3}_{-2} per cent of CCSNe (11/150 from our sample) occur in dwarf galaxies with stellar masses less than $10^8 M_{\odot}$, representing a substantial fraction of the population.

(iii) Only a few per cent (2^{+2}_{-1}) of CCSN hosts are undergoing starbursts with rapid star formation $sSFR > 10^8 \text{ yr}^{-1}$, all of which are dwarf galaxies with stellar masses $< 10^9 M_{\odot}$.

(iv) LGRB SN and SLSN-I host populations exhibit similar host galaxy properties. The peak of their host mass distributions is clearly much lower and spans a much smaller mass range than the CCSN population, which traces star formation (with median logarithmic mass of 8.7(0.2) for LGRB SNe, 7.9(0.2) for SLSNe-I, and 9.5(0.1) for CCSNe). LGRB SNe explode, on average, in higher mass galaxies than SLSNe-I. This lends further support to models in which LGRBs and SLSNe-I form only in certain environmental conditions related to low mass and metallicity.

(v) We do not find statistically significant differences between LGRB-SN and SN-less LGRBs. However, this comparison is limited by the small sample size of SN-less events (only 5).

(vi) Many (8/29) SLSNe-I are found in starbursts. This greater fraction is consistent with an intrinsic preference for starbursting galaxies, but is also consistent with a strong SLSN-I mass dependence in covariance with a larger starburst fraction in dwarf galaxies. We cannot yet conclusively identify or rule out a role for intense star formation in increasing the SLSN-I rate in starbursting dwarf galaxies.

Here, we provided an unbiased sample of photometrically derived properties of CCSN host galaxies, and directly compared them to a consistent analysis of all known SLSN and LGRB host galaxies. These catalogues are all included in a machine readable format and could be used for host preferences of events broad applicability, including unusual classes of object—such as the emerging category of fast blue transients (e.g. Drout et al. 2014).

In future work, we will increase our sample size, to try to better disentangle the role of $sSFR$ and stellar mass in SLSN-I production. We will also gather spectroscopy of the dwarf galaxies hosting CCSN and narrow-band $H\alpha$ to study their chemical abundances and star formation histories in more detail and thus obtain a deeper understanding of star formation in dwarf galaxies hosting CCSN. New, deeper all sky-surveys such as ATLAS (Tonry et al. 2018) and ZTF (Fremling et al. 2018), and eventually LSST, will increase the sample size of host unbiased samples of CCSNe and SLSNe significantly – as will comprehensive analysis of completed surveys (e.g. iPTF; Schulze et al. 2020).

ACKNOWLEDGEMENTS

First, we thank the referee for the careful and thorough read of our paper. In particular for their carefully structured comments, and

helpful grammar suggestions that simplified the process of revising our study and have substantially improved the clarity and readability of the paper. We would also like to thank N. Blagorodnova and S. Kulkarni for their Keck data and S. Kim and S. Schulze for kindly allowing us to use their Magellan data for LGRB 150518A. We acknowledge important feedback from K. Stanek who pointed out that we should include the ‘recovered’ ASAS-SN events in addition to those ‘discovered’ by ASAS-SN. This comment led to an increased CCSN sample size, better sample selection and has substantially improved the paper. We also acknowledge useful feedback from R. Lunnan, M. Modjaz, S. Schulze, S. Vergani, J. Japelj, A. Gal-Yam, and useful conversations with A. Wetzell and D. Bersier. We also thank E. Stanway and D. Bersier for a careful read of this paper and for their feedback. DAP thanks the Aspen Centre for Physics for providing a stimulating host environment during the completion of this work. The ACP is supported by National Science Foundation grant PHY-1607611. This work was partially supported by a grant from the Simons Foundation.

Some of the data presented herein were obtained at the W. M. Keck Observatory, which is operated as a scientific partnership among the California Institute of Technology, the University of California and the National Aeronautics and Space Administration. The Observatory was made possible by the generous financial support of the W. M. Keck Foundation. We recognize and acknowledge the very significant cultural role and reverence that the summit of Maunakea has always had within the indigenous Hawaiian community. We are most fortunate to have the opportunity to conduct observations from this mountain. This work is based in part on observations made with the *Spitzer Space Telescope*, which is operated by the Jet Propulsion Laboratory, California Institute of Technology under a contract with NASA. Support for this work was provided by NASA through an award issued by JPL/Caltech. This paper includes data gathered with the 6.5 m Magellan Telescopes located at Las Campanas Observatory, Chile.

DATA AVAILABILITY

The photometry used in this work is compiled into one machine-readable table and is available in the online supplementary material.

REFERENCES

- Adami C. et al., 2006, *A&A*, 451, 1159
 Anderson J. P. et al., 2018, *Nature Astron.*, 2, 574
 Angus C. R., Levan A. J., Perley D. A., Tanvir N. R., Lyman J. D., Stanway E. R., Fruchter A. S., 2016, *MNRAS*, 458, 84
 Arcavi I. et al., 2010, *ApJ*, 721, 777
 Arcavi I., Howell D. A., Valenti S., Trakhtenbrot B., 2017, *Astron. Telegram*, 10668, 1
 Ashall C. et al., 2019, *MNRAS*, 487, 5824
 Baldwin J. A., Phillips M. M., Terlevich R., 1981, *PASP*, 93, 5
 Barkat Z., Rakavy G., Sack N., 1967, *Phys. Rev. Lett.*, 18, 379
 Bazin G. et al., 2009, *A&A*, 499, 653
 Benetti S. et al., 2018, *MNRAS*, 476, 261
 Bersier D. et al., 2006, *ApJ*, 643, 284
 Bianchi L., Herald J., Efremova B., Girardi L., Zobot A., Marigo P., Conti A., Shiao B., 2011, *Astrophys. Space Sci.*, 335, 161
 Blanton M. R., Kazin E., Muna D., Weaver B. A., Price-Whelan A., 2011, *AJ*, 142, 31
 Bose S. et al., 2018, *ApJ*, 862, 107
 Brinchmann J., Charlot S., White S. D. M., Tremonti C., Kauffmann G., Heckman T., Brinkmann J., 2004, *MNRAS*, 351, 1151
 Bruzual G., Charlot S., 2003, *MNRAS*, 344, 1000

- Calzetti D., Armus L., Bohlin R. C., Kinney A. L., Koornneef J., Storchi-Bergmann T., 2000, *ApJ*, 533, 682
- Cameron E., 2011, *PASA*, 28, 128
- Cano Z. et al., 2017a, *A&A*, 605, A107
- Cano Z., Wang S.-Q., Dai Z.-G., Wu X.-F., 2017b, *Adv. Astron.*, 2017, 8929054
- Cantiello M., Yoon S.-C., Langer N., Livio M., 2007, *A&A*, 465, L29
- Carter B. J., Fabricant D. G., Geller M. J., Kurtz M. J., McLean B., 2001, *ApJ*, 559, 606
- Castro Cerón J. M., Michałowski M. J., Hjorth J., Malesani D., Gorosabel J., Watson D., Fynbo J. P. U., Morales Calderón M., 2010, *ApJ*, 721, 1919
- Cenko S. B. et al., 2006, *PASP*, 118, 1396
- Chabrier G., 2003, *ApJ*, 586, L133
- Chambers K. C. et al., 2016, preprint (arXiv:1612.05560)
- Chatzopoulos E., Wheeler J. C., 2012, *ApJ*, 760, 154
- Chen T.-W., Smartt S. J., Yates R. M., Nicholl M., Krühler T., Schady P., Dennefeld M., Inserra C., 2017a, *MNRAS*, 470, 3566
- Chen T.-W. et al., 2017b, GRB Coordinates Network, 20380, 1
- Chevalier R. A., 1977, *Ann. Rev. Astron. Astrophys.*, 15, 175
- Chevalier R. A., Irwin C. M., 2011, *ApJ*, 729, L6
- Cobb B. E., 2017, GRB Coordinates Network, 22270, 1
- Cutri R. M. et al., 2013, VizieR Online Data Catalog, 2328, 1
- Cutri R. M., et al., 2014, VizieR Online Data Catalog, 2328, 1
- D'Elia V. et al., 2018, *A&A*, 619, A66
- Dabringhausen J., Kroupa P., Baumgardt H., 2009, *MNRAS*, 394, 1529
- De Cia A. et al., 2018, *ApJ*, 860, 100
- de Ugarte Postigo A. et al., 2016, GRB Coordinates Network, 20342, 1
- de Ugarte Postigo A., Izzo L., Kann D. A., Thoene C. C., Pesev P., Scarpa R., Perez D., 2017, GRB Coordinates Network, 22204, 1
- Della Valle M. et al., 2006, *Nature*, 444, 1050
- Dong S. et al., 2016, *Science*, 351, 257
- Dong S. et al., 2017, *Astron. Telegram*, 1049
- Drake A. J. et al., 2009, *ApJ*, 696, 870
- Drout M. R. et al., 2014, *ApJ*, 794, 23
- Elias-Rosa N. et al., 2016, *MNRAS*, 463, 3894
- Erben T. et al., 2005, *Astron. Nachr.*, 326, 432
- Fazio G. G. et al., 2004, *ApJS*, 154, 10
- Filippenko A. V., 1997, *ARA&A*, 35, 309
- Flaugher B., 2005, *Int. J. Mod. Phys. A*, 20, 3121
- Fremling C., Kulkarni S. R., Taggart K., Perley D., 2018, *Astron. Telegram*, 11615, 1
- Fremling C. et al., 2020, *ApJ*, 895, 32
- Frieman J. A. et al., 2008, *AJ*, 135, 338
- Frohmaier C., Sullivan M., Nugent P. E., Goldstein D. A., DeRose J., 2017, *ApJS*, 230, 4
- Fruchter A. S. et al., 2006, *Nature*, 441, 463
- Furlong M. et al., 2015, *MNRAS*, 450, 4486
- Fynbo J. P. U. et al., 2006, *Nature*, 444, 1047
- Gal-Yam A., 2012, *Science*, 337, 927
- Gal-Yam A., 2019, *ARA&A*, 57, 305
- Gal-Yam A. et al., 2006, *Nature*, 444, 1053
- Galama T. J. et al., 1998, *Nature*, 395, 670
- Gehrels N. et al., 2006, *Nature*, 444, 1044
- Ginzburg S., Balberg S., 2012, *ApJ*, 757, 178
- Gorosabel J. et al., 2005, *A&A*, 444, 711
- Graur O., Bianco F. B., Huang S., Modjaz M., Shivvers I., Filippenko A. V., Li W., Eldridge J. J., 2017a, *ApJ*, 837, 120
- Graur O., Bianco F. B., Modjaz M., Shivvers I., Filippenko A. V., Li W., Smith N., 2017b, *ApJ*, 837, 121
- Gutiérrez C. P. et al., 2018, *MNRAS*, 479, 3232
- Hadjijska E. et al., 2012, *New Horizons in Time-Domain Astronomy*, 285, 324
- Hjorth J. et al., 2003, *Nature*, 423, 847
- Hjorth J. et al., 2012, *ApJ*, 756, 187
- Hodgkin S. T., Wyrzykowski L., Blagorodnova N., Koposov S., 2013, *Phil. Trans. R. Soc. London Ser. A*, 371, 20120239
- Holoien T. W.-S. et al., 2017a, *MNRAS*, 464, 2672
- Holoien T. W.-S. et al., 2017b, *MNRAS*, 467, 1098
- Holoien T. W.-S. et al., 2017c, *MNRAS*, 471, 4966
- Holoien T. W.-S. et al., 2019, *MNRAS*, 484, 1899
- Huchra J. P. et al., 2012, *ApJS*, 199, 26
- Ilbert O. et al., 2006, *A&A*, 457, 841
- Irani I. et al., 2019, *ApJ*, 887, 127
- Izzo L. et al., 2019, *Nature*, 565, 324
- Japelj J. et al., 2016a, *A&A*, 590, A129
- Japelj J., Vergani S. D., Salvaterra R., Hunt L. K., Mannucci F., 2016b, *A&A*, 593, A115
- Japelj J., Vergani S. D., Salvaterra R., Renzo M., Zapartas E., de Mink S. E., Kaper L., Zibetti S., 2018, *A&A*, 617, A105
- Jarrett T. H., Chester T., Cutri R., Schneider S. E., Huchra J. P., 2003, *AJ*, 125, 525
- Kaiser N. et al., 2002, *Survey and Other Telescope Technologies and Discoveries.*, 4836, 154 ,
- Kaiser N. et al., 2010, *Ground-based and Airborne Telescopes III.*, 7733, 77330E ,
- Kann D. A. et al., 2011, *ApJ*, 734, 96
- Kasen D., Bildsten L., 2010, *ApJ*, 717, 245
- Kato D. et al., 2007, *PASJ*, 59, 615
- Keller S. C. et al., 2007, *Publ. Astron. Soc. Aust.*, 24, 1
- Kelly P. L., Kirshner R. P., 2012, *ApJ*, 759, 107
- Kelly P. L., Filippenko A. V., Fox O. D., Zheng W., Clubb K. I., 2013, *ApJ*, 775, L5
- Kennicutt Jr. R. C., 1998, *ARA&A*, 36, 189
- Komatsu E. et al., 2011, *ApJS*, 192, 18
- Krühler T. et al., 2015, *A&A*, 581, A125
- Law N. M. et al., 2009, *PASP*, 121, 1395
- Lawrence A. et al., 2007, *MNRAS*, 379, 1599
- Lee J. C. et al., 2009, *ApJ*, 706, 599
- Lee J. C. et al., 2011, *ApJS*, 192, 6
- Leger A., Puget J. L., 1984, *A&A*, 500, 279
- Leloudas G. et al., 2011, *A&A*, 530, A95
- Leloudas G. et al., 2015, *MNRAS*, 449, 917
- Leloudas G. et al., 2016, *Nature Astron.*, 1, 0034
- Lilly S. J., Le Fevre O., Hammer F., Crampton D., 1996, *ApJ*, 460, L1
- Lunnan R. et al., 2014, *ApJ*, 787, 138
- Lunnan R. et al., 2015, *ApJ*, 804, 90
- Lupton R., Blanton M. R., Fekete G., Hogg D. W., O'Mullane W., Szalay A., Wherry N., 2004, *PASP*, 116, 133
- Lyman J. D. et al., 2017, *MNRAS*, 467, 1795
- Maeder A., Meynet G., 2000, *Ann. Rev. Astron. Astrophys.*, 38, 143
- Magnier E. A. et al., 2020, *ApJS*, 251, 32
- Mangano V. et al., 2007, *A&A*, 470, 105
- Margutti R. et al., 2007, *A&A*, 474, 815
- Margutti R. et al., 2017, *ApJ*, 836, 25
- Martin D. C. et al., 2005, *ApJ*, 619, L1
- Mazzali P. A. et al., 2006, *ApJ*, 645, 1323
- McLean I. S. et al., 2010, *SPIE*, 7735, 77351E
- McLean I. S. et al., 2012, *SPIE*, 8446, 84460J
- Metzger B. D., Margalit B., Kasen D., Quataert E., 2015, *MNRAS*, 454, 3311
- Michałowski M. J. et al., 2009, *ApJ*, 693, 347
- Michałowski M. J. et al., 2014, *A&A*, 562, A70
- Michałowski M. J. et al., 2015, *A&A*, 582, A78
- Mirabal N., Halpern J. P., O'Brien P. T., 2007, *ApJ*, 661, L127
- Modjaz M., Kewley L., Bloom J. S., Filippenko A. V., Perley D., Silverman J. M., 2011, *ApJ*, 731, L4
- Modjaz M. et al., 2020, *ApJ*, 892, 153
- Moriya T., Tominaga N., Tanaka M., Maeda K., Nomoto K., 2010, *ApJ*, 717, L83
- Moriya T. J., Blinnikov S. I., Tominaga N., Yoshida N., Tanaka M., Maeda K., Nomoto K., 2013, *MNRAS*, 428, 1020
- Moriya T. J., Sorokina E. I., Chevalier R. A., 2018, *Space Sci. Rev.*, 214, 59
- Mould J. R. et al., 2000, *ApJ*, 529, 786
- Neill J. D. et al., 2011, *ApJ*, 727, 15
- Nicholl M. et al., 2014, *MNRAS*, 444, 2096
- Niino Y. et al., 2017, *PASJ*, 69, 27
- Noeske K. G. et al., 2007, *ApJ*, 660, L43

- Norris J. P., Bonnell J. T., 2006, *ApJ*, 643, 266
 Ofek E. O. et al., 2007, *ApJ*, 662, 1129
 Oke J. B., Gunn J. E., 1983, *ApJ*, 266, 713
 Oke J. B. et al., 1995, *PASP*, 107, 375
 Ovaldsen J.-E. et al., 2007, *ApJ*, 662, 294
 Palmerio J. T. et al., 2019, *A&A*, 623, A26
 Pastorello A. et al., 2015, *MNRAS*, 453, 3649
 Peng C. Y., Ho L. C., Impey C. D., Rix H.-W., 2002, *AJ*, 124, 266
 Perley D. A., 2019, *PASP*, 131, 084503
 Perley D. A. et al., 2009, *ApJ*, 696, 1871
 Perley D. A. et al., 2016a, *ApJ*, 817, 7
 Perley D. A. et al., 2016b, *ApJ*, 817, 8
 Perley D. A. et al., 2016c, *ApJ*, 830, 13
 Persson S. E. et al., 2013, *PASP*, 125, 654
 Podsiadlowski P., Joss P. C., Hsu J. J. L., 1992, *ApJ*, 391, 246
 Prajs S. et al., 2017, *MNRAS*, 464, 3568
 Prentice S. et al., 2017, *Astron. Telegram*, 11060, 1
 Prieto J. L., Stanek K. Z., Beacom J. F., 2008, *ApJ*, 673, 999
 Prieto J. L. et al., 2012, *ApJ*, 745, 70
 Prochaska J. X. et al., 2004, *ApJ*, 611, 200
 Quimby R. M. et al., 2011, *Nature*, 474, 487
 Quimby R. M., Yuan F., Akerlof C., Wheeler J. C., 2013, *MNRAS*, 431, 912
 Quimby R. M. et al., 2018, *ApJ*, 855, 2
 Rakavy G., Shaviv G., 1967, *ApJ*, 148, 803
 Rest A. et al., 2011, *ApJ*, 729, 88
 Sako M. et al., 2008, *AJ*, 135, 348
 Salim S. et al., 2007, *ApJS*, 173, 267
 Schirmer M., 2013, *ApJS*, 209, 21
 Schlafly E. F., Finkbeiner D. P., 2011, *ApJ*, 737, 103
 Schulze S. et al., 2014, *A&A*, 566, A102
 Schulze S. et al., 2018, *MNRAS*, 473, 1258
 Schulze S. et al., 2020, preprint ([arXiv:2008.05988](https://arxiv.org/abs/2008.05988))
 Sedgwick T. M., Baldry I. K., James P. A., Kelvin L. S., 2019, *MNRAS*, 484, 5278
 Shappee B. J. et al., 2014, *ApJ*, 788, 48
 Smartt S. J., 2009, *ARA&A*, 47, 63
 Soderberg A. M. et al., 2004, *ApJ*, 606, 994
 Sollerman J. et al., 2006, *A&A*, 454, 503
 Sorokina E., Blinnikov S., Nomoto K., Quimby R., Tolstov A., 2016, *ApJ*, 829, 17
 Stanway E. R., Levan A. J., Tanvir N., Wiersema K., van der Horst A., Mundell C. G., Guidorzi C., 2015, *MNRAS*, 446, 3911
 Starling R. L. C. et al., 2011, *MNRAS*, 411, 2792
 Suzuki A., Maeda K., Shigeyama T., 2019, *ApJ*, 870, 38
 Svensson K. M., Levan A. J., Tanvir N. R., Fruchter A. S., Strolger L.-G., 2010, *MNRAS*, 405, 57
 Thöne C. C. et al., 2008, *ApJ*, 676, 1151
 Thöne C. C., de Ugarte Postigo A., García-Benito R., Leloudas G., Schulze S., Amorín R., 2015, *MNRAS*, 451, L65
 Thöne C. C. et al., 2017, *A&A*, 599, A129
 Tonry J. L. et al., 2018, *PASP*, 130, 064505
 Toy V. L. et al., 2016, *ApJ*, 818, 79
 Tremonti C. A. et al., 2004, *ApJ*, 613, 898
 Valley P. J. et al., 2018, *MNRAS*, 475, 2344
 van den Heuvel E. P. J., Portegies Zwart S. F., 2013, *ApJ*, 779, 114
 Vergani S. D. et al., 2015, *A&A*, 581, A102
 Volnova A. et al., 2017, GRB Coordinates Network, 20442, 1
 Vreeswijk P. M. et al., 2017, *ApJ*, 835, 58
 Wainwright C., Berger E., Penprase B. E., 2007, *ApJ*, 657, 367
 Wang J. et al., 2018, *ApJ*, 867, 147
 Watson D. et al., 2011, *ApJ*, 741, 58
 Werner M. W. et al., 2004, *ApJS*, 154, 1
 Wilson J. C. et al., 2003, in Iye M., Moorwood A. F. M., eds, Proc. SPIE Conf. Ser. Vol. 4841. SPIE, Bellingham, p. 451
 Wiseman P. et al., 2020, *MNRAS*, 495, 4040
 Woosley S. E., Bloom J. S., 2006, *ARA&A*, 44, 507
 Woosley S. E., Blinnikov S., Heger A., 2007, *Nature*, 450, 390
 Wright E. L. et al., 2010, *AJ*, 140, 1868
 Xhakaj E., Rojas-Bravo C., Foley M. M., Kilpatrick C. D., Pan Y.-C., Foley R. J., 2017, *Astron. Telegram*, 10620, 1
 Yasuda N. et al., 2001, *AJ*, 122, 1104
 Yoon S.-C., Langer N., Norman C., 2006, *A&A*, 460, 199
 York D. G. et al., 2000, *AJ*, 120, 1579
 Young D. R. et al., 2010, *A&A*, 512, A70
 Yusof N. et al., 2013, *MNRAS*, 433, 1114
 Zhang J., Wang X., 2014, *Astron. Telegram*, 6827, 1

SUPPORTING INFORMATION

Supplementary data are available at *MNRAS* online.

Table 4. New LGRB host galaxy photometry.

Table 5. New PTF SLSN host photometry.

Table A1. Photometry of all galaxy samples including ASAS-SN CCSN, LGRBs, and SLSN used in our analysis.

Table A2. LGRB photometry sources.

Appendix A

Appendix B

Appendix C

Please note: Oxford University Press is not responsible for the content or functionality of any supporting materials supplied by the authors. Any queries (other than missing material) should be directed to the corresponding author for the article.

This paper has been typeset from a $\text{\TeX}/\text{\LaTeX}$ file prepared by the author.