



## LJMU Research Online

**Bellard, A, Trotter, PD, McGlone, F and Cazzato, V**

**Role of medial prefrontal cortex and primary somatosensory cortex in self and other-directed vicarious social touch: a TMS study**

<http://researchonline.ljmu.ac.uk/id/eprint/21720/>

### Article

**Citation** (please note it is advisable to refer to the publisher's version if you intend to cite from this work)

**Bellard, A, Trotter, PD, McGlone, F and Cazzato, V (2023) Role of medial prefrontal cortex and primary somatosensory cortex in self and other-directed vicarious social touch: a TMS study. *Social Cognitive and Affective Neuroscience*. 18 (1). pp. 1-14. ISSN 1749-5016**


LJMU has developed **LJMU Research Online** for users to access the research output of the University more effectively. Copyright © and Moral Rights for the papers on this site are retained by the individual authors and/or other copyright owners. Users may download and/or print one copy of any article(s) in LJMU Research Online to facilitate their private study or for non-commercial research. You may not engage in further distribution of the material or use it for any profit-making activities or any commercial gain.

The version presented here may differ from the published version or from the version of the record. Please see the repository URL above for details on accessing the published version and note that access may require a subscription.

For more information please contact [researchonline@ljmu.ac.uk](mailto:researchonline@ljmu.ac.uk)

<http://researchonline.ljmu.ac.uk/>

# Role of medial prefrontal cortex and primary somatosensory cortex in self and other-directed vicarious social touch: a TMS study

Ashleigh Bellard,<sup>1</sup> Paula D. Trotter,<sup>1</sup> Francis L. McGlone,<sup>2</sup> and Valentina Cazzato<sup>1</sup> 

<sup>1</sup>School of Psychology, Faculty of Health, Liverpool John Moores University, Liverpool, UK

<sup>2</sup>Institute of Psychology, Health & Society, University of Liverpool, Liverpool, UK

Correspondence should be addressed to Valentina Cazzato, School of Psychology, Faculty of Health, Liverpool John Moores University, Liverpool, UK.

E-mail: [V.Cazzato@ljmu.ac.uk](mailto:V.Cazzato@ljmu.ac.uk)

## Abstract

Conflicting evidence points to the contribution of several key nodes of the ‘social brain’ to the processing of both discriminatory and affective qualities of interpersonal touch. Whether the primary somatosensory cortex (S1) and the medial prefrontal cortex (mPFC), two brain areas vital for tactile mirroring and affective mentalizing, play a functional role in shared representations of C-tactile (CT) targeted affective touch is still a matter of debate. Here, we used offline continuous theta-burst transcranial magnetic stimulation (cTBS) to mPFC, S1 and vertex (control) prior to participants providing ratings of vicarious touch pleasantness for self and others delivered across several body sites at CT-targeted velocities. We found that S1-cTBS led to a significant increase in touch ratings to the self, with this effect being positively associated to levels of interoceptive awareness. Conversely, mPFC-cTBS reduced pleasantness ratings for touch to another person. These effects were not specific for CT-optimal (slow) stroking velocities, but rather they applied to all types of social touch. Overall, our findings challenge the causal role of the S1 and mPFC in vicarious affective touch and suggest that self- vs other-directed vicarious touch responses might crucially depend on the specific involvement of key social networks in gentle tactile interactions.

**Key words:** vicarious social touch; C-tactile afferents; social perception and cognition networks; transcranial magnetic stimulation; offline theta-burst stimulation

## Introduction

Interpersonal touch plays a pivotal role in non-verbal communication and is essential in the formation and maintenance of relationships (Morrison *et al.*, 2010; Brauer *et al.*, 2016; von Mohr *et al.*, 2017; Cascio *et al.*, 2019). Affective tactile experience during the very earliest stages of life is in fact deemed crucial for the development of the social brain (Cascio *et al.*, 2019). If not experienced, a lack of affective touch can have a negative long-lasting impact on the social brain, such as reduced grey matter and a reduction in brain activity (Nelson *et al.*, 2014).

Touch has been historically described as comprising of a discriminative/sensorimotor dimension, physiologically supported by myelinated A $\beta$  afferent nerves, enabling fast conduction velocities and crucial for identifying external stimuli. This system ultimately allows rapid decision making which guides subsequent behaviour. Additionally, there is an affective dimension of touch, underpinned by specialized unmyelinated low threshold mechanosensory cutaneous C-tactile afferents (CTs), in the peripheral nervous system and predominately located in hairy

skin (Liu *et al.*, 2007; McGlone *et al.*, 2014; Olausson *et al.*, 2010, but see Löken *et al.*, 2011; Watkins *et al.* (2021) for recent report of sparse innervation of CTs in the palm). CTs respond vigorously to gentle stroking of the skin, applied at velocities between 1 and 10 cm/s, with the greatest response occurring when touch is given at  $\sim$ 3 cm/s at skin temperature (Löken *et al.*, 2009; Ackerley *et al.*, 2014; McGlone *et al.*, 2014). This type of touch is typically perceived as pleasant and rewarding in neurotypicals (Löken *et al.*, 2009; Ackerley *et al.*, 2014; Croy *et al.*, 2016) with CTs hypothesized to support the encoding of the hedonic value of interpersonal social touch (McGlone *et al.*, 2014).

Functional neuroimaging studies have offered insight into the neural pathways involved in touch processing, specifically those underpinned by the CTs fibres (Gordon *et al.*, 2013). These investigations have revealed the involvement of the posterior Insula Cortex in actual and anticipated experience of touch (Craig, 2002; Björnsdotter *et al.*, 2009; Gordon *et al.*, 2013; Lucas *et al.*, 2015; Morrison, 2016), a brain area which is understood to support the early convergence of sensory and affective signals about the

Received: 11 April 2023; Revised: 11 August 2023; Accepted: 5 October 2023

© The Author(s) 2023. Published by Oxford University Press.

This is an Open Access article distributed under the terms of the Creative Commons Attribution License (<https://creativecommons.org/licenses/by/4.0/>), which permits unrestricted reuse, distribution, and reproduction in any medium, provided the original work is properly cited.

body which in turn are then re-represented in the mid- and anterior portions of the insula, two brain sites which are responsible for the integration of interoceptive and contextual information (Critchley et al., 2004; Craig, 2009; Evrard and Craig, 2015).

In addition to the insular cortex, previous neuroimaging studies have revealed that other key areas of the 'social brain' involved in social perception and social cognition (Gallagher and Frith, 2003; Olausson et al., 2008; Morrison et al., 2011; Gordon et al., 2013; Koster-Hale and Saxe, 2013; Boehme et al., 2019) are also responsible for the processing of the affective dimension of interpersonal touch. One of these brain regions includes the medial prefrontal cortex (mPFC) (Gordon et al., 2013; Voos et al., 2013; Chen et al., 2020) which is well known for its involvement in theory of mind and mentalizing abilities (for reviews see Mar, 2011; Sperduti et al., 2011) and is implicated in inferring other people's intentions and mental states as well as attributing emotional states to others. Regarding affective touch, greater mPFC activation has been found previously when participants received manual brush stroking to the arm, compared to when they received brush stroking to the palm (Gordon et al., 2013). Furthermore, a connectivity analysis using the mPFC as a seed region demonstrated that the insula and the amygdala are specifically involved in the processing of gentle touch delivered to the arm. Taken together these results suggest that the coactivation of the mPFC together with the amygdala and Insula during CT-optimal touch likely represents the encoding of social relevance and reward during the experience of CT-targeted affective touch (Gordon et al., 2013) and strengthens the role of the skin as a 'social organ' (Morrison et al., 2010).

Less conclusive evidence has been provided regarding the functional role of the primary somatosensory cortex (S1) in encoding the affective dimension of interpersonal touch. Whilst evidence supports the primary involvement of S1 in touch discrimination, including detection of tactile events (Cohen et al., 1991), intensity and two-point discrimination of touch to the skin (Tegenthoff et al., 2005), only recently findings suggest a putative involvement of S1 in understanding others' sensations (Keysers et al., 2004, 2010; Blakemore et al., 2005; Ebisch et al., 2008; Schaefer et al., 2009, 2012; Pihko et al., 2010; Bolognini et al., 2013, 2014; Holle et al., 2013; Kuehn et al., 2013), a role which goes far beyond mere sensory discrimination. For instance, a study by Bolognini et al. (2013) which delivered low-frequency repetitive transcranial magnetic stimulation (rTMS) over S1 revealed that inhibition of S1 disrupted participants' performance on a go/no-go task, but only when the affective state was conveyed by touch. Interestingly, this interfering effect was associated with individual differences in empathic ability to adopt the subjective perspective of others (but see Bowling and Banissy, 2017, for the lack of evidence of S1 modulation in vicarious tactile perception following high-frequency transcranial random noise stimulation). In a more recent TMS combined with electroencephalography study by the same group (Pisoni et al., 2018), recordings were performed during tactile perception and observation to look for differences in cortical activation and connectivity between felt and seen touch. Findings from this study show that alpha connectivity within a frontoparietal pathway underpins the ability to distinguish self and others' somatosensory states, controlling and distinguishing shared tactile representations in S1. Taken all together, these studies provide support that S1 could be endorsed with a dedicated tactile mirroring mechanism (Rizzolatti and Sinigaglia, 2016), allowing the automatic and unconscious simulation of others' somatic states. Accordingly, this mirror activity of S1 may provide a neurophysiological substrate for matching inner

self with other body representations and, in turn, an empathic interpersonal sharing of tactile events through the embodied simulation of the somatic sensations observed in others (Decety and Sommerville, 2003; Gallese, 2005; Grafton, 2009; Keysers et al., 2010). Nevertheless, previous literature has not fully offered conclusive evidence for a strong link between S1 and social touch, specifically for the case of CT-targeted affective touch. One reason may be due to conflicting findings derived from the use of different behavioural paradigms and techniques, with only two neuromodulatory studies to date investigating the neural underpinnings of CT-optimal touch (Case et al., 2016, 2017), with a specific focus on the role of S1. For instance, the studies by Case et al. (2016), Case et al. (2017) revealed that after participants received CT-optimal slow and non-CT-optimal fast gentle brushing of the hand preceding rTMS over S1 (Case et al., 2016) and over S2 (Case et al., 2017), touch discrimination was reduced and rated as more intense, but pleasantness ratings remained unaffected. A further case-study conducted on a patient with acute polyradiculitis and polyneuropathy, i.e. loss of large-diameter myelinated afferents with a functioning CT-afferent system, still demonstrated typical pleasantness responses to receiving CT touch on hairy skin sites and only displayed deficits in their touch discrimination. Functional magnetic resonance imaging (fMRI) findings from this investigation revealed activation of the dorsal posterior insula cortex but not S1 (Olausson et al., 2002). Taken all together, these findings cast doubts on whether affective touch is coded inside of S1, with the neural correlates involved in the control and distinction of shared tactile representations (within or outside S1) remaining largely unknown.

With these regard, it might be plausible that the existence of a shared tactile representation between perceived and observed touch may require some mechanisms subserving self-other distinction, allowing to code whom an activated tactile representation belongs to (i.e. self or other-directed touch). Therefore, with our current investigation, we aimed to understand whether S1 and mPFC are causatively involved in vicarious affective touch responses. Here, we took advantage of TMS, a non-invasive brain stimulation technique which enables the investigation of the causative role of a brain region in a specific behaviour, by inducing a temporary interference of neural activity. In creating this temporary interference, researchers can draw strong conclusions regarding whether the targeted brain region is necessarily involved with a specific function (Hallett, 2007). We therefore applied this approach to temporally perturb two crucial nodes of the social brain supposedly involved in the processing of shared representations of vicarious CT-targeted affective touch prior to participants observing an individual receiving touch at CT-optimal and CT non-optimal velocities (0, 5 and 30 cm/s), over several body regions (Ventral forearm, upper arm, back, cheek and palm). Importantly, we wanted to understand how an individual's experience of touch might impact vicarious ratings of touch for self and others. Accordingly, tactile affective shared representations of vicarious gentle touch were investigated by two tasks which were designed to probe expectations of how touch is perceived by others (other-directed touch: How pleasant do you think the touch was for the person receiving it?) vs self (self-directed touch: How much would you like to be touched like this?). These two questions can also be considered as an implicit (other-directed) vs more explicit (self-directed) evaluation of pleasantness for CT-optimal touch, two dimensions of affective touch that can dissociate under certain circumstances. For example, two recent studies suggests that the vicarious experience of gentle touch is different in children in that they may

not be able to detect a difference when the touch is delivered to another individual as compared to the self (Haggarty et al., 2021a,b). More recently, Ali et al. (2023) reported that healthy participants' ratings for how pleasant the touch was for the person receiving the touch in the video (other-focussed question) were significantly higher than ratings for how much they would like to be touched like that (self-focussed question). Finally, a further study on atypical vicarious affective touch demonstrated that current anorexics and remitted anorexics did not differ from the control subjects in their ability to rate touch to another person as a pleasant experience. However, when evaluating touch for themselves, they rated pleasant touching as being less enjoyable than the controls (Bellard et al., 2022). Overall, results from these investigations open the questions as to whether different neurocognitive mechanisms may underlie subjective evaluations of vicarious social touch experiences for self and others.

Given that mPFC is greatly involved in affective mentalizing and in processing the rewarding value of CT-optimal touch, it is anticipated that interference with this region's activity should result in reduced pleasantness ratings for CT-optimal touch compared to CT non-optimal touch when this is provided for others (other-directed touch). Furthermore, if according to Case et al. (2016), Case et al. (2017) encoding of the affective dimension of CT-optimal touch happens beyond S1, as well as the hedonic value of touch is intrinsically related to the physical characteristics of tactile stimuli, such as force, velocity, etc., then a temporary interference of S1 should result in reduced pleasantness ratings which should not be CT-optimal specific. Lastly, given that vicarious touch results in stronger behavioural responses when there is greater self-relatedness (Serino et al., 2008, 2009; Cardini et al., 2011, 2013), we expected S1 to be necessary for the visuo-tactile mirroring of touch and somatic experience related to touch for the self as opposed to others.

Finally, given that several studies have reported that neural responses to both experienced and seen touch vary in relation to several personality traits (Schaefer et al., 2012; Voos et al., 2013), in an explorative correlational analysis, top-down factors well known to influence touch responses, were also controlled for. Specifically, we focused on top-down factors, such as eating disorder symptomatology (Crucianelli et al., 2016, 2019, 2021; Davidovic et al., 2018; Cazzato et al., 2021; Bellard et al., 2022), interoceptive awareness (Adler and Gillmeister, 2019; Rigato et al., 2019) and touch experiences and attitudes (Trotter et al., 2018b), all of which are important for how an individual experiences social touch.

## Methods

### Participants

A total of 18 right-handed females aged 18–35 years ( $M_{\text{age}} = 23$  yrs,  $s.d. = 4.26$ ), were recruited and subject to all experimental conditions. The sample size required for our 3\*3 (velocity\*brain region) repeated-measures ANOVA design was determined using the G\*power software (Faul et al., 2009), setting expected effects size at 0.37 based on two previous non-invasive brain stimulation studies on vicarious affective touch (Peled-Avron et al., 2019; Saporta et al., 2022),  $\alpha$ -level at 0.05, and desired power ( $1-\beta$ ) at 95%.

The justification for only including females in this investigation is that recent studies have shown that females are more sensitive to affective touch, as well as to discriminative aspects of touch. Specifically, females rated affective touch and non-affective touch stimuli as more pleasant and had higher tactile acuity than males (Jönsson et al., 2017). All participants were either students from Liverpool John Moores University or from the general public.

All participants had normal or corrected to normal vision (with glasses/contact lenses), no skin conditions, such as eczema, no chronic pain conditions, such as arthritis and had no past history of epilepsy or any form of neurological disease, no psychiatric conditions including a current or previous diagnosis of an eating disorder, did not have a cardiac pacemaker or any form of metal implants in the head and were not pregnant. All inclusion criteria were checked prior to testing to ensure participants met all inclusion criteria and those meeting the exclusion criteria did not participate. To ensure this and prior to testing, participants were administered with a TMS safety screening questionnaire to check for their eligibility to receive brain stimulation (Rossi et al., 2011).

This investigation was conducted in accordance with the Helsinki declaration of ethical standards. The study protocol was approved by LJMU's University Research Ethics Committee (UREC) (protocol: 21/PSY/002). All participants gave full informed consent to take part in the study and they were all debriefed at the end of the study. Participants were provided with a £15 amazon voucher and level 4 BSc Psychology students were awarded course credits, as compensation for their time.

### Demographics questionnaire

Demographic information that was taken from participants included their age, sex, gender, ethnicity and date of birth. Questions also asked participants to declare whether they have any skin conditions, such as psoriasis, eczema, etc. Height was collected by using a stadiometer and a calibrated bioimpedance digital scale (OMRON BF511) was used to measure participants' body weight, for the calculation of participants' body mass index (BMI).

### Self-report questionnaires

We controlled for possible confounding variables which are known to bias affective touch responses: eating disorder symptoms (Crucianelli et al., 2016, 2019, 2021; Davidovic et al., 2018; Bellard et al., 2022), dysmorphic concerns and interoceptive awareness (Cazzato et al., 2021), and touch experiences and attitudes (Devine et al., 2020). Scores obtained by the EDI-3 and Dysmorphic Concern Questionnaire (DCQ) scales were compared to normative data to ensure comparability with the general population.

### Multidimensional Assessment of Interoceptive Awareness (MAIA)

The Multidimensional Assessment of Interoceptive Awareness (MAIA, Mehling et al., 2012) is a 32-item questionnaire which assesses eight components of interoceptive awareness: Noticing (4 items), Not Distracting (3 items), Not Worrying (3 items), Attention Regulation (7 items), Emotional Awareness (5 items), Self-regulation (4 items), Body Listening (3 items) and Trusting (3 items). Items were answered using a 6-point Likert scale ranging from 0 = Never to 5 = Always. Questions included: 'When I am tense, I notice where the tension is located in my body' and 'I notice when I am uncomfortable in my body'. Each individual dimension is scored by the average of scores from questions corresponding to that subscale, with some questions being reversed scored. This questionnaire has been previously used in neurophysiological research measuring associations between facets of metacognitive interoceptive and vicarious social touch (Adler and Gillmeister, 2019; Rigato et al., 2019). The MAIA questionnaire was found to have good internal consistency, with Cronbach  $\alpha = 0.90$  (Valenzuela-Moguillansky and Reyes-Reyes, 2015). In this study, this was used to understand whether individual differences in metacognitive interoceptive awareness were associated

with changes in pleasantness ratings consequent to continuous theta-burst transcranial magnetic stimulation (cTBS) over mPFC or S1.

### Eating Disorder Inventory-3 (EDI-3)

The Eating Disorder Inventory-3 (EDI-3) (Garner, 2004) is a 91 item self-report questionnaire assessing eating disorder symptomatology. This questionnaire assesses 12 subscales, 3 of which assess eating disorder symptomatology; Drive for Thinness, Bulimia and Body Dissatisfaction, which collectively examines eating disorder risk by summing these subscale scores (risk composite score). The other 9 subscales investigate personality traits generally associated with eating disorders: Low Self-esteem, Personal Alienation, Interpersonal Insecurity, Interpersonal Alienation, Interoceptive Deficit, Emotional Dysregulation, Perfectionism, Asceticism and Maturity Fear. Questions are answered using a 6-point Likert scale ranging from 0 = never to 5 = always. This questionnaire has been previously validated with clinical and non-clinical samples across various cultures (Clausen et al., 2011). Also, individual subscales, such as Interoceptive Deficits, better described as a measure of emotional awareness, was also used to assess one's ability to understand and recognize internal bodily sensations and emotional states (Garner, 2004). This questionnaire has good internal consistency in clinical populations, with Cronbach  $\alpha = 0.80-0.92$  (Clausen et al., 2011) and in healthy populations with Cronbach  $\alpha = 0.78-0.93$  (Garner, 2004; Clausen et al., 2011). In this study, this measure was used to control whether ED symptomatology was associated with changes in touch pleasantness ratings consequent to TMS disruption to mPFC or S1.

### Dysmorphic Concern Questionnaire (DCQ)

The DCQ (Oosthuizen et al., 1998) is a short 7-item questionnaire and is a reliable tool which assesses both behavioural and cognitive aspects of dysmorphic concern. Each item is rated using a 4-point Likert scale ranging from 0 = not at all, 4 = much more than most people. All 7 items were totalled for each participant to give an overall score for dysmorphic concern. These scores range from a minimum of 0 to a maximum of 21, with a score of 9 or more being indicative of high dysmorphic concern (Mancuso et al., 2010). The DCQ has good internal consistency with Cronbach  $\alpha = 0.80$  (Jorgensen et al., 2001). This measure was used to determine whether levels of concerns towards physical appearance were associated with changes in pleasantness ratings after TMS disruption to mPFC or S1.

### Touch Experiences and Attitudes Questionnaire (TEAQ)

The Touch Experiences and Attitudes Questionnaire (TEAQ, Trotter et al., 2018b) is a 57-item questionnaire which was administered to examine current experiences of positive touch and positive experience of touch during childhood, as well as an individual's attitude towards positive touch. Questions were answered using a 5-point Likert scale ranging from 1 = 'Disagree strongly', 2 = 'Disagree a little', 3 = 'Neither agree nor disagree', 4 = 'Agree a little', 5 = 'Agree strongly'. Questions included: 'I dislike people being very physically affectionate towards me.' and 'There was a lot of physical affection during my childhood.' A mean score was calculated for each of the six subscales; friends and family touch (11 items), current intimate touch (14 items), childhood touch (9 items), attitude to self-care (5 items), attitude to intimate touch (13 items) and attitude to unfamiliar touch (5 items), with negatively worded questions reversed scored. The TEAQ questionnaire was found to have good internal consistency with Cronbach

$\alpha = 0.78-0.92$  (Trotter et al., 2018b). This questionnaire assessed whether changes in pleasantness of touch consequent to inhibition of mPFC or S1 were associated with experiences and attitudes of touch.

## Measures

### Tactile estimation task

Given the involvement of S1 in the intensity of touch (Case et al., 2016) and the processing of two-point discrimination of touch to the skin (Tegenthoff et al., 2005), we administered the tactile estimation task (TET) to rule out any tactile disturbances from participants which may be causative of a reduction in S1 activation. In doing so, this eliminates the chances of any false claims associated with a reduction in pleasantness ratings from cTBS-S1, rather than due to tactile disturbances (Goodin et al., 2018).

The TET has also been previously used with the general and Anorexia Nervosa (AN) populations (Keizer et al., 2011, 2012; Zopf et al., 2021). The TET for this investigation involved applying two tactile stimuli simultaneously to the right forearm of the participants prior to any brain stimulation. Participants were asked to wear clothing that allowed easy access to their forearm.

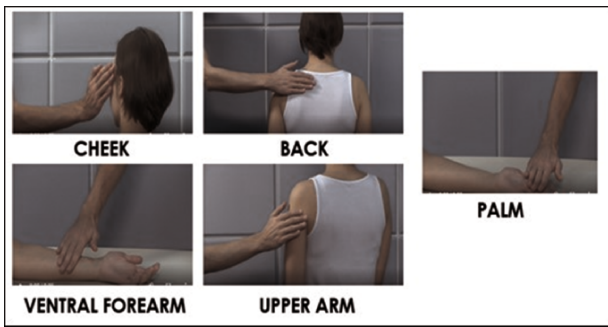
During this task, participants were provided with a blindfold and asked to estimate the distance between the two tactile stimuli using their thumb and index finger and place their fingers onto the whiteboard provided. The distance between the thumb and index finger was then measured by the researcher using a ruler and for each trial, the distance was noted. The distance the tactile points on the calliper was placed on the participants forearm differed, i.e. 50, 60 and 70 mm measurements were used. These measurements were applied randomly to the same body region to prevent participants using previous measurements to guide their estimation of the same measurement, which in turn could result in order effects making them more accurate (Keizer et al., 2011). To ensure participants did not experience any discomfort during this task, only female researchers were present during this part of testing (and during all testing).

### Affective touch video clips

This task was displayed using E-prime 2.0 software (Psychology Software Tools, Pittsburgh, PA). The observed affective touch task consisted of 6-s touch videos of a male applying touch to various body areas of a female actress. Touch was provided across five different body regions, which included a glabrous skin site with little CT innervation, the palm and four hairy skin sites with greater CT innervation: the ventral forearm, upper arm, cheek and back. Touch was provided at three different velocities [static (0 cm/s), slow (5 cm/s) and fast (30 cm/s)] for each body region.

The order in which the videos were viewed was fully randomized amongst participants. After viewing each video, participants were probed to respond to one of two questions: 'How pleasant do you think that action was for the person being touched?' (other-directed touch) using a VAS scale ranging from 0 = 'very unpleasant' to 100 = 'extremely pleasant' and 'How much would you like to be touched like that?' (self-directed touch) using a VAS scale ranging from 0 = 'not at all' to 100 = 'extremely' (Walker et al., 2017; Bellard et al., 2022).

Both tasks were blocked, so participants only answered one question per block and blocks were counterbalanced. For each block, there was a total of 45 videos displayed, as each touch video was presented three times per block in a randomized order. There were two blocks presented, one for each condition (self-directed touch and other-directed touch) which were displayed once for



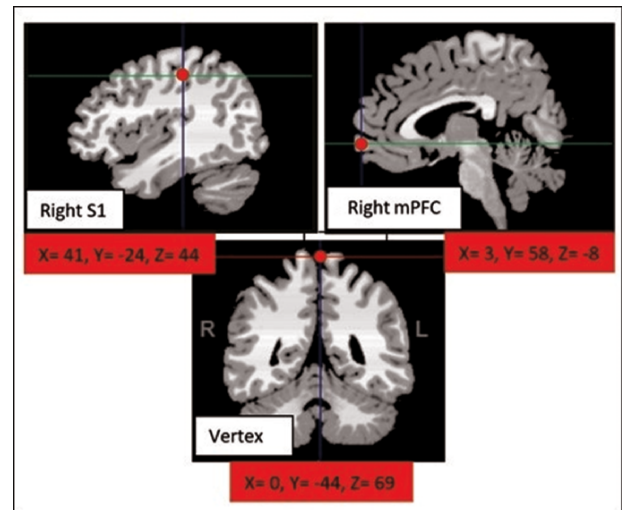
**Fig. 1.** Visual illustration of the five body sites (CT-innervated body regions: ventral forearm, upper arm, cheek and back vs the non-CT innervated palm) from the affective touch videos used for the two self- and other-directed touch tasks in this study.

each of the three brain regions (mPFC, S1 and vertex), with a total of six blocks. Overall, across all conditions and blocks, there was a total of 270 videos presented, each displayed in 240 p YouTube quality (Trotter et al., 2018a) (see Figure 1).

## TMS

The experiment involved three visits to the lab, in which participants were subject to all brain stimulation conditions which were counterbalanced amongst participants. All participants were subject to three offline rTMS with theta-burst protocol sessions which were delivered over S1, mPFC and vertex (control region) on the right hemisphere, with one brain region targeted per session. TMS sessions lasted 40 s (200 bursts, each comprising three pulses at 50% power, 30 Hz frequency, 6 Hz burst frequency repeated every 200 ms (5 Hz), 600 pulses in total) as detailed in Goldsworthy et al. (2012). This occurred prior to the presentation of the observed affective touch task. As a result, participants were required to attend three lab sessions, to prevent any confound of previous stimulation interfering with results from another brain region (Avenanti et al., 2012; Ding et al., 2014; Pozdniakov et al., 2021). Participants received this protocol to the right S1, mPFC and vertex using a 70 mm figure-of-eight stimulation coil (Magstim Double 70 mm Air Film Coil and D70 Air Film Coil), connected to a Magstim SuperRapid<sup>2</sup> Stimulator (The Magstim Company, Carmarthenshire, Wales), this generated a magnetic field up to 0.8 T at the surface of the coil.

Prior to the brain stimulation phase, right S1, mPFC and vertex target regions were localized by means of stereotaxic navigation on individual estimated magnetic resonance images (MRIs) obtained through a 3D warping procedure fitting a high-resolution MRI template with the Davidovic et al. (2019) participant's scalp model and craniometric points (Softaxic 3.0, EMS, obtained using individual MRI scans, see Carducci and Brusco, 2012). Repetitive TMS with a theta-burst protocol was delivered over the right S1 ( $X = 46$ ,  $Y = -28$ ,  $Z = 72$ ) following the localization of the same brain area by Case et al. (2016). mPFC coordinates were located based on a previous study by Davidovic et al. (2019) using coordinates ( $X = 3$ ,  $Y = 58$ ,  $Z = -8$ ) and specifically from a main contrast showing which brain regions were more active when participants received stroking (compared to vibration); following this study, we targeted the mPFC located close to the Brodmann's Area 10 in the anterior mPFC. As a control site, the vertex was localized as the point falling half the distance between the nasion and theinion on the same midline and was stimulated with the induced current running from posterior to anterior along the interhemispheric fissure ( $X = 0$ ,  $Y = -44$ ,  $Z = 69$ ) (Cazzato et al., 2014) (see Figure 2).



**Fig. 2.** Visual depiction of the location of each of the three brain regions on the right hemisphere: medial prefrontal cortex (mPFC), primary somatosensory (S1) and vertex, as shown in MRIcro template. The red dots indicate the position the coil was placed on participants' scalp. All coordinates are converted to Talairach.

## General procedure

Interested participants were sent the screening questionnaire and TMS safety-screening questionnaire via email and asked to fill it in and send it back to be checked before any testing sessions were booked in. The TMS safety-screening assessed participant's eligibility to safely receive brain stimulation and the screening questionnaire assessed standard criteria for the study, such as being female, over 18, no chronic pain, skin conditions, etc. Those participants who were eligible, based on responses from the TMS safety screening questionnaire and screening questionnaire were contacted by the researcher to arrange three testing sessions, each with a minimum of 48 h in between.

For session 1, lasting ~1h, participants were asked to re-complete the TMS safety screening questionnaire, to ensure no changes have occurred since completing it online. Participants were then asked to complete the demographics questionnaire, EDI-3, MAIA, DCQ and TEAQ. Once completed, participants were asked to sit comfortably and complete the TET. This task involved applying two tactile stimuli simultaneously to the forearm. Participants were blindfolded and asked to estimate the distance between the two tactile stimuli placed at various distances, using their thumb and index finger.

Proceeding from this, the Softaxic Neuronavigation system was used to create a 3D reconstruction of the participant's brain using the nasion, Inion, A1 and A2 as well as localizing 19 individual points on the scalp. This 3D reconstruction was used to localize the first brain region, by entering Talairach Co-ordinates for that specific brain region. This 3D brain reconstruction was saved using a unique participant code, to be used for future sessions. After a reconstruction was created, participants received offline TMS with a theta-burst protocol, in which 600 pulses were provided for a duration of 40 s to one of the three brain regions (mPFC, S1 and vertex), depending on counterbalancing order. To successfully target the mPFC and for the coil to remain in place in this region, participants were seated in a chair which was laid flat when this stimulation was provided. Once stimulation was finished, participants immediately completed the two observed affective touch tasks in two separate blocks. This required participants to view videos of a male actor applying

touch to a female across five body sites (ventral forearm, upper arm, cheek, back and palm) with three different velocities [static (0 cm/s), slow (5 cm/s) and fast (30 cm/s)]. After viewing each video, in two separate blocks each corresponding to a question, participants were asked to respond: 'How pleasant do you think that action was for the person being touched?' (other-directed touch) using a VAS scale ranging from 0 = very unpleasant to 100 = extremely pleasant and 'How much would you like to be touched like that?' (self-directed touch) using a VAS scale ranging from 0 = not at all to 100 = extremely (Walker et al., 2017). The same procedure was repeated for sessions 2 and 3, each one lasting ~20 min. Finally, participants were debriefed and provided with a full account of what the study was about and the hypothesis of the investigation. Overall, the study lasted a maximum of 2 h.

## Statistical analysis and data processing

All demographic information and scores for the self-reported questionnaires are reported as mean (M) and s.d. in Table 1.

All statistical analyses were implemented in STATISTICA version 8.0 (StatSoft, Tulsa, OK, USA) and/or IBM SPSS (Statistics version 26). Given the fact that null hypothesis significance testing is the main statistical method in neuroscience, we first used frequentist ANOVAs to show the effect of cTBS over the three regions of interest on vicarious ratings of touch. Accordingly, a two-way ANOVA with within-subject factors of velocity (0, 5 and 30 cm/s) and brain region (mPFC, S1 and vertex) was conducted separately for each task (self-directed touch and other-directed touch). Post hoc pairwise comparisons were carried out using the Newman-Keuls test. The  $\alpha$  value for all statistical tests was set at 0.05. Effect sizes were obtained using the partial  $\eta$ -squared. However, null hypothesis significance testing cannot assess whether observed data favour the null hypothesis in comparison to the alternative hypothesis, which in our study is critical to determine whether cTBS manipulations were ineffective in changing vicarious ratings of self- and other-directed touch. Therefore, we complemented ANOVAs with their Bayesian implementations using JASP (JASP Team, 2022, v0.16.3). By doing so, we directly evaluated the relative strength of evidence for the null and alternative hypotheses, providing quantification of the degree to which the data support either hypothesis (Dienes, 2011; Wagenmakers et al., 2018; Keyes et al., 2020). Default priors in JASP were used. Inclusion Bayes Factors (BFs) quantify the evidence for including a specific main effect or interaction. A BF >3 indicates evidence for the alternative hypothesis, whereas a BF <0.3 indicates evidence for the null hypothesis (Jeffreys, 1961). A BF between 0.3 and 3 indicates an inconclusive result which is not in favour of either hypothesis.

Finally, for each task, we also performed Pearson's correlations (Bonferroni-corrected,  $\alpha/5$ ,  $P = 0.01$ ) as well as their Bayesian implementation, considering the index  $\Delta$ (Brain Areas X – Vertex) for touch ratings with scores obtained for the EDI-3, MAIA, TEAQ, DCQ questionnaires and TET. This allowed us to account for the potential contribution of confounding variables, such as body image disturbances and social touch attitudes and experiences to the experimental findings.

## Results

### Univariate statistics

Table 1 demonstrates the ranges, mean and s.d. for the demographics, self-report questionnaire scores and TET estimations for all participants. Participants in this sample had an average healthy (fell into the normal weight classification following WHO

**Table 1.** Range scores for demographics, self-report questionnaires scores and TET estimations for all participants (n=18). The column on the far right displays the mean and standard deviation (in brackets)

	Range	Mean (s.d.)
Age (years)	18.00–35.00	22.00 (4.26)
BMI (kg/cm <sup>2</sup> )	20.52–36.73	24.19 (4.64)
EDI-3		
Drive for thinness	0.00–20.00	7.67 (5.59)
Bulimia	1.00–30.00	12.06 (9.85)
Body dissatisfaction	0.00–32.00	9.56 (11.67)
Low self-esteem	0.00–16.00	6.61 (5.46)
Personal alienation	0.00–14.00	5.39 (4.39)
Interpersonal insecurity	0.00–13.00	5.33 (4.03)
Interpersonal alienation	1.00–16.00	4.50 (3.65)
Interoceptive deficit	0.00–26.00	5.94 (6.28)
Emotional dysregulation	0.00–14.00	4.33 (3.40)
Perfectionism	0.00–21.00	7.67 (5.40)
Ascetism	0.00–14.00	4.11 (3.72)
Maturity fear	0.00–20.00	8.11 (5.36)
Composite score	4.00–59.00	29.28 (18.70)
DCQ (max 21)	1.00–15.00	6.83 (4.20)
MAIA		
Noticing (max 5)	1.00–4.00	2.78 (0.87)
Not distracting (max 5)	0.00–3.67	2.35 (0.93)
Not worrying (max 5)	0.33–4.00	2.18 (1.03)
Attention regulation (max 5)	0.43–3.71	2.24 (0.83)
Emotional awareness (max 5)	0.80–4.00	2.84 (0.90)
Self-regulation (max 5)	0.75–4.00	2.33 (0.79)
Body listening (max 5)	0.00–3.33	1.65 (1.02)
Trusting (max 5)	0.67–3.67	2.22 (0.70)
TEAQ		
Friends and family touch (max 5)	2.18–4.64	3.57 (0.68)
Current intimate touch (max 5)	2.43–4.64	3.78 (0.68)
Childhood touch (max 5)	2.67–5.00	3.99 (0.76)
Attitude to self-care (max 5)	3.00–5.00	3.97 (0.75)
Attitude to intimate touch (max 5)	2.00–5.00	4.06 (0.81)
Attitude to unfamiliar touch (max 5)	2.00–4.00	2.87 (0.71)
Tactile estimation task (TET)		
Baseline	25.00–45.00	34.17 (6.47)
50 mm	38.60–103.80	58.67 (17.24)
60 mm	33.00–131.40	65.02 (22.97)
70 mm	23.60–139.40	72.11 (27.97)
Total	38.47–124.87	64.93 (20.50)

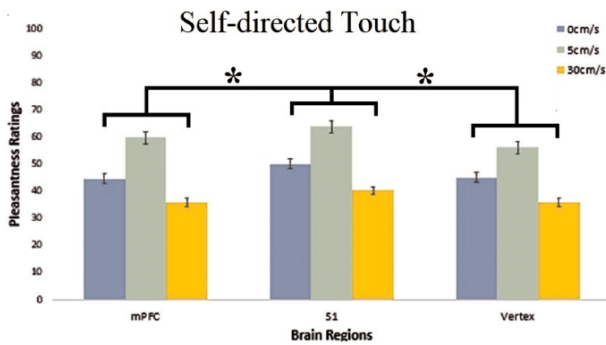
BMI body mass index; EDI-3 eating disorder inventory; DCQ dysmorphic concern questionnaire; MAIA multidimensional assessment of interoceptive awareness; TEAQ touch experiences and attitudes questionnaire; s.d. standard deviation

**Table 2.** Demonstrates the Talairach coordinates averaged across all participants (n= 18) for each brain region (mPFC, S1, and Vertex) for the localisation of the coil using the Softaxic Neuronavigation system

	X	Y	Z
Brain regions			
mPFC	5.86	56.71	-10.57
S1	45.57	-27.71	71.86
Vertex	1.43	-42.14	68.43

mPFC medial prefrontal cortex; S1 primary somatosensory cortex

categories) BMI score. Scores obtained for the EDI-3 and DCQ were compared to normative data to ensure comparability with the general population. In keeping with Clausen et al. (2011), EDI-3 Interoceptive deficit subscale scores for the current study were indicative of the general population ( $5.94 \pm 5.50$ ;  $t(17) = 0.300$ ,  $P$



**Fig. 3.** Pleasantness (VAS) ratings for each CT-optimal and non-optimal velocity (0, 5 and 30 cm/s) for each of the 3 brain regions (mPFC, S1 and vertex) for self-directed touch. cTBS over S1 selectively increased touch willingness for touch to self, compared to inhibition of mPFC and vertex. This effect was not specific for touch delivered at CT-optimal velocities. Error bars indicate SEM over participants \* $P < 0.05$ .

= 0.768). In keeping with Mancuso et al. (2010), scores for the DCQ varied from no dysmorphic concern to great dysmorphic concern, with the average being indicative of low dysmorphic concern towards one's body ( $6.83 \pm 4.46$ ;  $t(17) = 2.395$ ,  $P = 0.028$ ).

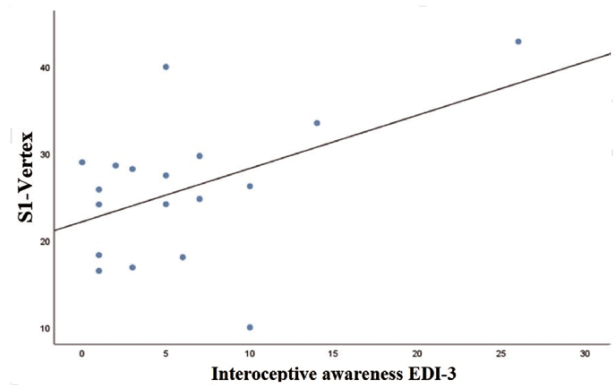
Table 2 demonstrates the average (x, y, z) Talairach coordinates averaged across all participants for the mPFC, S1 and vertex, which were the average coordinates used to localize the coil onto the scalp. All coordinates have been taken from that reported from the SofTaxic Neuronavigation system. All coordinates are originally reported in MNI space and have been converted to Talairach.

### Vicarious ratings of self-directed touch

The two-way within-subjects ANOVA of brain region (mPFC, S1 and vertex)  $\times$  Velocity (0, 5 and 30 cm/s) for touch ratings for oneself, revealed a significant main effect of brain region [ $F_{(2,34)} = 3.770$ ,  $P = 0.033$ ,  $\eta^2 = 0.182$ ,  $BF_{incl} = 1.938$ ]. Significantly higher pleasantness ratings were provided for S1-cTBS ( $51.55 \pm 3.84$ ) compared to vertex-cTBS ( $45.80 \pm 3.06$ ,  $P = 0.037$ ,  $BF_{10} = 26.046$ ) and mPFC-cTBS ( $46.87 \pm 3.28$ ,  $P = 0.043$ ,  $BF_{10} = 2.79$ ). No evidence for a significant difference between mPFC-cTBS and the vertex-cTBS was observed ( $P = 0.635$ ,  $BF_{10} = 0.188$ ).

There was also strong evidence for a significant main effect of velocity [ $F_{(2,34)} = 15.408$ ,  $P < 0.001$ ,  $\eta^2 = 0.48$ ,  $BF_{incl} = 1116.5$ ]. Touch to the self was greater for touch velocities of 5 cm/s ( $60.05 \pm 5.13$ ) compared to touch delivered at 0 cm/s ( $46.69 \pm 2.84$ ,  $P < 0.001$ ,  $BF_{10} = 14606.3$ ) and 30 cm/s velocities ( $37.48 \pm 3.50$ ,  $P < 0.001$ ,  $BF_{10} = 1.035 \times 10^8$ ). Furthermore, touch delivered at 0 cm/s velocity ( $46.69 \pm 2.84$ ) received greater ratings compared to that delivered at 30 cm/s ( $37.48 \pm 3.50$ ,  $P = 0.031$ ,  $BF_{10} = 61.176$ ). Surprisingly, there was no significant two-way interaction between brain region  $\times$  velocity [ $F_{(4,68)} = 0.503$ ,  $P = 0.733$ ,  $\eta^2 = 0.03$ ,  $BF_{incl} = 0.083$ ], with the Bayes factor analysis providing stronger evidence for no interaction between the two factors (see Figure 3 for a visual breakdown of results).

We then conducted Pearson's Correlational analyses for self-directed touch considering the index  $\Delta[S1-Vertex]$  for touch ratings with EDI-3, MAIA, TEAQ, DCQ questionnaires and TET to understand if any effects from non-invasive brain stimulation on pleasantness ratings was associated with any of the scales. Results showed evidence for a significant positive correlation between emotional awareness (interoceptive deficit subscale from EDI-3) and change scores after S1-cTBS ( $r = 0.604$ ,  $P = 0.008$ ,  $BF_{10} = 7.642$ , see Figure 4). Thus, participants with higher levels of



**Fig. 4.** Correlation between  $\Delta[S1-Vertex]$  index and interoceptive awareness (EDI-3) for self-directed touch. Individuals with greater interoceptive (emotional) awareness reported greater desire to receive social touch (regardless of CT-optimal velocities) after cTBS over S1 (compared to the vertex).

emotional awareness rated they would like to receive touch more following inhibitory cTBS stimulation of the S1 than following vertex stimulation. No other correlations were significant (all  $r_s > -0.295$ , all  $P_s > 0.959$ , see Supplementary Materials for a full report of the results obtained by these correlations).

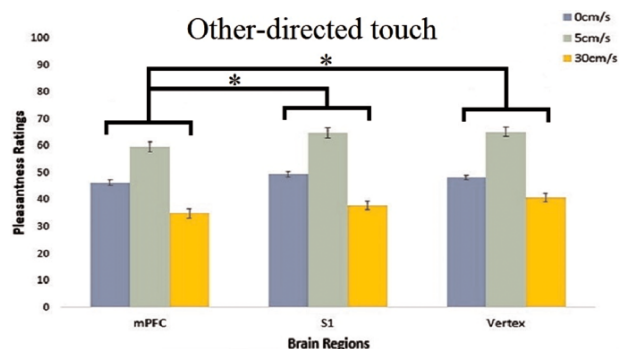
In summary, regardless of cTBS to brain regions, our data provide strong evidence that CT-optimal velocity of 5 cm/s was always preferred when asked about touch to self, compared to CT non-optimal velocities, i.e. 0 and 30 cm/s. Crucially, cTBS over S1 increased ratings for touch to self, compared to inhibition of mPFC and vertex (although Bayes Factor analysis suggested that compared to mPFC-cTBS, this effect was statistically inconclusive and therefore it remains unclear whether the effect of S1-cTBS was location-specific). Interestingly, this finding was also associated with evidence of a greater levels of emotional awareness (EDI-3). Finally, the increase in self-directed touch ratings after S1-cTBS was not CT-optimal touch specific, as also demonstrated by the Bayesian statistics which showed evidence for the absence of a selective effect of stimulation after cTBS, specifically for CT-optimal (slow) affective touch.

### Vicarious ratings of other-directed touch

The two-way within-subjects ANOVA of brain region (mPFC, S1 and vertex)  $\times$  Velocity (0, 5 and 30 cm/s) for touch ratings for another, revealed a significant main effect of brain region [ $F_{(2,34)} = 4.384$ ,  $P = 0.020$ ,  $\eta^2 = 0.205$ ,  $BF_{incl} = 1.479$ ]. cTBS-mPFC ( $46.92 \pm 2.32$ ) significantly lowered pleasantness ratings compared to cTBS-vertex ( $51.33 \pm 2.72$ ,  $P = 0.026$ ,  $BF_{10} = 13.923$ ) and cTBS-S1 ( $50.70 \pm 2.04$ ,  $P = 0.025$ ,  $BF_{10} = 5.255$ ). Importantly, cTBS over S1 ( $50.70 \pm 2.04$ ) did not significantly lower pleasantness ratings compared to vertex-cTBS ( $51.33 \pm 2.72$ ,  $P = 0.701$ ,  $BF_{10} = 0.163$ ).

There was also strong evidence for a significant main effect of velocity [ $F_{(2,34)} = 22.803$ ,  $P < 0.001$ ,  $\eta^2 = 0.573$ ,  $BF_{10} = 19758.1$ ]. Other-directed touch delivered at 5 cm/s ( $63.17 \pm 4.06$ ) was rated as significantly more pleasant compared to touch delivered at 0 cm/s ( $47.96 \pm 2.02$ ,  $P < 0.001$ ,  $BF_{10} = 4.505 \times 10^6$ ) and at 30 cm/s ( $37.82 \pm 2.84$ ,  $P < 0.001$ ,  $BF_{10} = 7.463 \times 10^9$ ). Furthermore, touch delivered to others at 0 cm/s ( $47.96 \pm 2.02$ ) was rated as significantly more pleasant compared to touch delivered at 30 cm/s ( $37.82 \pm 2.84$ ,  $P = 0.011$ ,  $BF_{10} = 750.011$ ). Similar to results obtained for the self-directed touch task, there was no significant two-way interaction between brain region  $\times$  velocity [ $F_{(4,68)} = 0.768$ ,





**Fig. 5.** Pleasantness (VAS) ratings for each CT-optimal and non-optimal velocity (0, 5 and 30 cm/s) for each of the 3 brain regions (mPFC, S1 and vertex) for other-directed touch. cTBS over mPFC selectively decreased touch pleasantness for touch to other, compared to inhibition of mPFC and vertex. This effect was not specific for touch delivered at CT-optimal velocities. Error bars indicate SEM over participants \* $P < 0.05$ .

$P = 0.550$ ,  $\eta^2 = 0.04$ ,  $BF_{10} = 0.324$ , with the Bayes factor analysis providing strong evidence in favour of no interaction between the two factors (see Figure 5).

Pearson's correlational analyses for other-directed touch separately considering the index  $\Delta$ [mPFC-Vertex] for pleasantness ratings with variables from EDI-3, MAIA, TEAQ, DCQ questionnaires and TET scores revealed no significant correlations with  $\Delta$ [mPFC-Vertex] and any subscales (all  $r_s > -0.397$ , all  $P_s > 0.102$ , see Supplementary Materials for a full report of the results obtained by these correlations).

In summary, our data provide strong evidence that overall, other-directed touch delivered at a CT-optimal velocity of 5 cm/s was always preferred compared to non-optimal velocities of 0 and 30 cm/s. cTBS delivered over the mPFC specifically decreased pleasantness ratings compared to cTBS delivered over vertex and S1, whilst evidence for a lack of significant difference was provided when comparing S1- to vertex-cTBS. Like the result obtained for self-directed touch, the lack of a significant two-way interaction of brain region and velocities suggests that the effects of stimulation over mPFC are not specific for CT-optimal (slow) touch. This result was also confirmed by the Bayesian statistics which showed evidence for the absence of a selective interferential effect of cTBS, specifically for CT-optimal (slow) affective touch.

## Discussion

To the best of our knowledge, this was the first study to investigate whether perturbing the mPFC and S1 by means of cTBS is causative in altering ratings for self- and for other-directed vicarious CT-targeted affective touch. A point of novelty was that we investigated the neural bases of vicarious CT-optimal touch by focusing not only on the shared tactile representation of the participant with the touch receiver when touch is directed to self, but also on the tactile representation of the participant with another person, in S1 and mPFC. To this aim, we employed a neuromodulatory technique, cTBS, to gain insight into the causal involvement of S1 and mPFC, two brain areas supposedly necessary for the encoding of affective and sensory dimensions of vicarious CT-optimal touch. We also controlled for confounding variables that have been shown to impact touch responses, such as eating disorder symptoms (Crucianelli et al., 2016, 2019, 2021; Davidovic et al., 2018; Bellard et al., 2022), dysmorphic

concerns (Cazzato et al., 2021), interoceptive awareness (Adler and Gillmeister, 2019; Rigato et al., 2019) and touch experiences and attitudes towards touch (Trotter et al., 2018b; Devine et al., 2020).

Our findings showed that cTBS stimulation of S1, compared to the vertex, resulted in participants reporting greater ratings for self-directed touch, thus suggesting a key role of S1 in the visual processing of self-directed touch (regardless of CT touch optimality). On the other hand, based on the Bayes Factor analysis, it remains unclear whether this increase in ratings for self-directed touch after S1-cTBS, compared to mPFC-cTBS, is location-specific. If there is an effect, it is relatively small.

Our findings resonate with previous research evidence that right S1 is functionally involved in visuo-tactile mirroring mechanisms important for evaluating our experience of touch, based on the observation of another being touched (Keysers et al., 2004; Blakemore et al., 2005). Accordingly, we speculate that a shared tactile representation in S1 of observed somatic feelings due to resonance mechanisms may allow the interpretation (re-mapping) of others' tactile events for self (Keysers et al., 2004; Blakemore et al., 2005; Bufalari et al., 2007; Ebisch et al., 2008; Schaefer et al., 2009; Pihko et al., 2010; Wood et al., 2010; Adler et al., 2016; Deschrijver et al., 2016). Nevertheless, according to this reasoning, it could be expected that upon inhibition of S1 it would be no longer possible to experience the positive, rewarding value of self-directed touch, which in turn should lead to a decrease rather than to an increase in the liking to be touched. Our findings could be explained within the predictive coding framework (Friston and Stephan, 2007, 2008; Huang and Rao, 2011). Accordingly, perception of another person receiving touch is dependent upon noise of incoming sensory signals to constantly generate and update a mental model of this action (Beal, 2003). The brain acts as a predictive machine and uses this generated model to make predictions of sensory input and compare this to incoming actual sensory signals, with the main purpose of minimizing prediction errors—the difference between predictions and the actual signal (Huang and Rao, 2011). The brain then forms Bayesian-optimal predictions (i.e. apply probabilities) of future scenarios which must be constantly revised, and prior beliefs updated through the input of new sensory information. Therefore, if such principles apply to the inhibition of S1 in the current study, it may be plausible to think that by adding noise into the somatosensory signal, this in turn could have led to greater prediction errors as these incoming signals would have been classified as unreliable. As a result, the brain may use prior beliefs, i.e. crucially that participants know this is a 'pleasant' (non-painful) touch experience so have greater willingness to be touched in the same way, rather than using belief updating and make the decision that they know the touch is pleasant and want to be touch more like it. A further alternative explanation, more in line with the results obtained by Case et al. (2016) which shows increased ratings of brushing intensity after inhibitory TMS to S1, could be related to the fact that in our study, cTBS over S1 might have caused a reduced sensory discrimination, perhaps of intensity. Therefore, future studies should focus on assessing changes in tactile sensation of intensity during observed CT-targeted affective touch.

Notably, perturbation of S1 did not result in a reduction in touch ratings for the self when touch was delivered at CT-optimal (i.e. slow) stroking velocities, given that this effect was also observable in non-CT optimal touch. Accordingly, the Bayes Factor analysis provides evidence for the lack of interaction between cTBS effects and CT-optimal velocities, which may speak in favour of

the fact that rather than playing a role in visuo-tactile mirroring specifically for CT-targeted (slow) affective touch, S1 may be more involved in the processing of all forms of affective touch (both delivered at CT-optimal and non-CT optimal speeds). These findings are also in line with the linear positive association observed between changes in liking to be touched upon S1-cTBS and self-reports of emotional awareness (as measured by the EDI-3 scale). Accordingly, for self-directed touch, after cTBS-S1, we observed that the higher the liking to be touched, the higher the levels of emotional awareness. This finding is not in fact surprising. Emotional awareness is an essential process for human psychosomatic health, with disturbance of this type of awareness leading to unhealthy conditions through obstruction of homeostatic processing (Kanbara and Fukunaga, 2016). However, it should be noted that this measure of Interoceptive deficits (EDI-3) is limited in its assessment of true interoception, that is the distinction between somatic, as opposed to emotional awareness (Eshkevari et al., 2014). It is important therefore for future investigations to evaluate interoceptive awareness using other self-report measures that more directly assess somatic awareness, as opposed to emotional awareness. Nevertheless, we cannot provide any conclusive evidence of correlations between facets of metacognitive interoception as measured by MAIA and changes of ratings for self-directed touch following S1-cTBS. With these regard, a recent study by Adler and Gillmeister (2019) found that individuals with better interoceptive abilities, specifically the ability to sustain and control attention to bodily signals, also have stronger vicarious representations of observed touch within somatosensory cortices. Bodily and emotional awareness is an increasing research field (e.g. Khalsa et al., 2018), and the investigation of potential relationships with vicarious representations of interpersonal touch is likely to be advanced through the development of more refined neuromarkers of implicit interoception (e.g. heartbeat evoked potentials, Schulz et al., 2015).

When looking at ratings for other-directed touch, a further novel result of our study was that inhibition of the mPFC caused a reduction in pleasantness ratings when making inferences regarding someone else receiving affective touch. The mPFC, a key node of the 'social brain' (Frith et al., 2003; Amodio and Frith, 2006; Frith and Frith, 2006; Mar, 2011; Sperduti et al., 2011) is well known for its involvement in theory of mind, mindreading and mentalizing abilities (for reviews see Mar, 2011; Sperduti et al., 2011), and is implicated in inferring other people's intentions and mental states as well as attributing emotional states to others (Mar, 2011; Sperduti et al., 2011; Schurz et al., 2014). Previous neuroimaging evidence reported significant deactivation during the observation of touch (specifically any touch observation condition vs baseline) in bilateral mPFC (Ebisch et al., 2011). On the other hand, a study by Gordon et al. (2013) reported that during CT-targeted gentle touch to the arm compared to palm, activation in right mPFC showed greater connectivity with left insula and amygdala, which may represent a coding of the social relevance and social reward of the tactile stimuli. In the current investigation, reduction in pleasantness ratings for other-directed touch upon disruption of mPFC might be linked to inaccuracies (or not being able to) in inferring and attributing pleasantness of touch for someone else (Stuss et al., 2001). Nevertheless, and contrary to our expectation, inhibition of the mPFC was not causative of a reduction in pleasantness ratings specifically in the case of CT-targeted (slow) affective touch for another. In fact, the Bayes factor analysis provided more evidence for the null hypothesis that is the modulation of mPFC-cTBS on other-directed touch ratings was not specific for CT-optimal (i.e. slow)

stroking speeds. Therefore, we suggest this brain region may be involved in the processing of affective touch when viewing someone else receiving touch and that the processing of CT-optimal touch occurs outside of mPFC. In addition, no significant correlations were observed between changes in pleasantness after mPFC-cTBS and varying levels of EDs symptoms, tactile distortions and touch experiences, nor with metacognitive interoception, which likely might be due to the relatively small size of our sample.

Our study offers insight into the functional role of the mPFC and S1 in shared representations of other- and self-directed interpersonal touch, nonetheless several limitations have been identified. Firstly, the videos used in the current investigation offer no contextual information which are important for touch pleasantness, such as visual/auditory cues regarding the touch giver (Macaluso and Driver, 2001; Taylor-Clarke et al., 2002) and motivation and mood (Kalaska, 1994; Montoya and Sitges, 2006; Triscoli et al., 2014). These are key features for the understanding how important touch is and how positive or negative it is (Ellingsen et al., 2016). Furthermore, the relationship between the touch giver and receiver in the videos is important to highlight to participants, as this would control for the touch giver participants are imagining receiving the observed touch from. This way, participants would be able to fully embody the observed touch and imagine a scenario where they are receiving touch from a loved one or stranger. It is well known indeed that romantic touch from a partner or touch received from a loved one is perceived as more pleasant than touch from a stranger (Suvilehto et al., 2015; Bellard et al., 2023), suggesting touch to be given from a stranger may impede negatively with their responses (Kreuder et al., 2017). Therefore, contextual factors relating to touch pleasantness should be considered in light of the social relationship between touch giver and touch receiver. Moreover, results obtained for self- and other-directed touch should be handled cautiously due to the potential confound of the nature of the questions used for the two touch ratings, thus, no direct comparisons should be made. Whilst overall the two questions aimed at understanding how empathic vicarious experiences of touch might impact a participant's ratings of observed touch (Haggarty et al., 2023), they were measuring behavioural responses on two different scales (i.e. 'desire/wanting to be touched' for the self-directed ratings, and 'overt' evaluation of pleasantness for the other person receiving the touch). Accordingly, it might be possible that whilst for self-directed touch, participants' ratings might relate more to the affective reaction to the hedonic evaluation of the rewarding tactile interaction, on the other hand, the other-directed touch ratings might correspond to the motivational value and incentive attributed to the rewarding tactile stimulus for touch received by others (Triscoli et al., 2014). These two evaluative dimensions can under specific circumstances dissociate from one other, so that for example, after an aversive experience, explicit wanting and anticipatory pleasure of interpersonal touch are enhanced, without a corresponding change in the liking expressed during and after consumption (Massaccesi et al., 2021).

In this study, we did not include a measure of perspective taking/mentalizing, for example the perspective-taking subscale of the interpersonal reactivity index (IRI; Davis, 1983), previously successfully used in demonstrating links between empathy and vicarious representations of touch (Gazzola et al., 2006; Schaefer et al., 2012; Bolognini et al., 2013, 2014). Whilst a previous related investigation by Adler and Gillmeister (2019) did not find evidence to suggest a link between somatosensory physiological markers of vicarious touch and individuals' perspective-taking abilities, it

might be, as pointed by the two authors, that previously reported associations in the literature result from feedback from later cognitive processes rather than affecting S1 processing directly, a mechanism which might be instead housed in mPFC. Future studies might further elucidate the links between perspective taking abilities and shared representations of vicarious touch responses in key nodes of the 'social brain', including the mPFC.

Furthermore, it should be noted that the activation of S1 might be reliant on the level to which the individual resembles the observed body part as their own, as well as perspective, with specular (mirror-like) mapping in S1 for third person perspective occurring at a later stage of cortical somatosensory processing (Rigato et al., 2019). In future, it could be useful to ensure participants fully embody the touch they are viewing, by using for example Virtual Reality, a form of technology previously successfully used in enhancing bodily ownership (de Jong et al., 2017; Harjunen et al., 2017; Della Longa et al., 2022; Seinfeld et al., 2022).

Finally, a further argument should be made on the localisation of S1 and mPFC and specifically in relation to the extent to which the targeted cortical regions were actually stimulated with TMS. Whilst the co-registration of coil placement with individual MRI images and the use of a real-time neuro-navigation system adopted in our study ensured precise anatomical targeting, yet it is still very possible that the stimulation of S1 by TMS has also affected nearby posterior parietal sites, including the motor cortex (Chan and Baker, 2015) if one considers TMS methodological limitations of spatial resolution and its indirect effects on connected areas (Tamè et al., 2015). As for the localization of the mPFC, a recent review by Lieberman et al. (2019) suggests that whilst there is consistent evidence that the mPFC plays a causal role in social cognition (primarily observed for studies of emotion perception and trait judgments), it should be noted that, in the domain of TMS, these are mainly supported by investigations focusing on the dorsomedial portion of the PFC, in Brodmann area 9 (Lieberman et al., 2019). The reason for this is that conventional, flat figure-8 rTMS coils are unable to reach deeper portions of the PFC, and therefore TMS is ill-suited to this scope. At present, we cannot provide any strong conclusions about the causative role of mPFC in vicarious affective touch, when considering its anatomical subdivisions. Future studies should focus on this question by employing more suitable methods, e.g. transcranial focused ultrasound, which offer several advantages over TMS methods including high spatial resolution and the ability to reach deep brain targets (Darmani et al., 2022).

Our results provide supportive evidence that distinct vicarious social touch mechanisms exist to support simulations of bodily events when these are related to the self as compared to others. Specifically, we speculate that whereas right S1 may be crucial for the visuo-tactile mirroring and representation of touch self-relatedness, the right mPFC, a core node of the 'social brain' may be instead actively involved in representing tactile outcomes for the bodies of others. We also report preliminary evidence that visuo-tactile mirroring for self-directed touch in S1 is linked to individual differences in emotional awareness, thus paving the way for future investigations looking at associations between alteration of somatosensory cortex with difficulties in emotional awareness during interpersonal touch scenarios (Kanbara and Fukunaga, 2016). These TMS effects were not specific for CT-targeted (slow) affective touch, but rather they applied to all types of social touch. To conclude, our study challenges the causal role of the S1 and mPFC in vicarious affective touch and suggests that self vs other-directed vicarious touch responses

might crucially depend on the specific involvement of key social networks in tactile interactions.

## Data availability

The data that support the findings of this study are free and available to access in OSF [https://osf.io/7guda/?view\\_only=fefce28d956341069d919bce3f396566](https://osf.io/7guda/?view_only=fefce28d956341069d919bce3f396566).

## Funding

This research was supported by The Royal Society—Research Grants (RGS180002) awarded to V.C.

## Conflict of interest

The authors declared that they had no conflict of interest with respect to their authorship or the publication of this article.

## Acknowledgements

The authors thank Cosimo Urgesi and two anonymous referees for many helpful comments that have improved this manuscript.

## References

- Ackerley, R., Carlsson, I., Wester, H., Olausson, H., Backlund Wasling, H. (2014). Touch perceptions across skin sites: differences between sensitivity, direction discrimination and pleasantness. *Frontiers in Behavioral Neuroscience*, **54**(8), 1–10.
- Adler, J., Gillmeister, H. (2019). Bodily self-relatedness in vicarious touch is reflected at early cortical processing stages. *Psychophysiology*, **56**(12), 1–46.
- Adler, J., Schabinger, N., Michal, M., Beutel, M.E., Gillmeister, H. (2016). Is that me in the mirror? Depersonalisation modulates tactile mirroring mechanisms. *Neuropsychologia*, **85**, 148–58.
- Ali, S.H., Makdani, A.D., Cordero, M.I., et al. (2023). Hold me or stroke me? Individual differences in static and dynamic affective touch. *PLoS ONE*, **18**(5), 1–25.
- Amodio, D.M., Frith, C.D. (2006). Meeting of minds: the medial frontal cortex and social cognition. *Nature Reviews Neuroscience*, **7**(4), 268–77.
- Avenanti, A., Coccia, M., Ladavas, E., Provinciali, L., Ceravolo, M.G. (2012). Low-frequency rTMS promotes use-dependent motor plasticity in chronic stroke: a randomized trial. *Neurology*, **78**(4), 256–64.
- Beal, M.J. (2003). *Variational Algorithms for Approximate Bayesian Inference*. University of London, University College London (United Kingdom).
- Bellard, A., Mathew, J., Sun, W., et al. (2023). Topography and relationship-specific social touching in individuals displaying body image disturbances. *Scientific Reports*, **13**(1), 1–15.
- Bellard, A., Trotter, P., McGlone, F., Cazzato, V. (2022). Vicarious ratings of self vs. other-directed social touch in women with and recovered from anorexia nervosa. *Scientific Reports*, **12**(1), 1–15.
- Björnsdotter, M., Löken, L., Olausson, H., Vallbo, Å., Wessberg, J. (2009). Somatotopic organization of gentle touch processing in the posterior insular cortex. *Journal of Neuroscience*, **29**(29), 9314–20.
- Blakemore, S.J., Bristow, D., Bird, G., Frith, C., Ward, J. (2005). Somatosensory activations during the observation of touch and a case of vision-touch synaesthesia. *Brain*, **128**(7), 1571–83.

- Boehme, R., Hauser, S., Gerling, G.J., Heilig, M., Olausson, H. (2019). Distinction of self-produced touch and social touch at cortical and spinal cord levels. *Proceedings of the National Academy of Sciences*, **116**(6), 2290–9.
- Bolognini, N., Rossetti, A., Convento, S., Vallar, G. (2013). Understanding others' feelings: the role of the right primary somatosensory cortex in encoding the affective valence of others' touch. *Journal of Neuroscience*, **33**(9), 4201–5.
- Bolognini, N., Rossetti, A., Fusaro, M., Vallar, G., Miniussi, C. (2014). Sharing social touch in the primary somatosensory cortex. *Current Biology*, **24**(13), 1513–7.
- Bowling, N.C., Banissy, M.J. (2017). Modulating vicarious tactile perception with transcranial electrical current stimulation. *European Journal of Neuroscience*, **46**, 2355–64.
- Brauer, J., Xiao, Y., Poulain, T., Friederici, A.D., Schirmer, A. (2016). Frequency of maternal touch predicts resting activity and connectivity of the developing social brain. *Cerebral Cortex*, **26**(8), 3544–52.
- Bufalari, I., Aprile, T., Avenanti, A., Di Russo, F., Aglioti, S.M. (2007). Empathy for pain and touch in the human somatosensory cortex. *Cerebral Cortex*, **17**(11), 2553–61.
- Cardini, F., Costantini, M., Galati, G., Romani, G.L., Làdavas, E., Serino, A. (2011). Viewing one's own face being touched modulates tactile perception: an fMRI study. *Journal of Cognitive Neuroscience*, **23**(3), 503–13.
- Cardini, F., Tajadura-Jiménez, A., Serino, A., Tsakiris, M. (2013). It feels like it's me: interpersonal multisensory stimulation enhances visual remapping of touch from other to self. *Journal of Experimental Psychology: Human Perception and Performance*, **39**(3), 630–7.
- Carducci, F., Brusco, R. (2012). Accuracy of an individualized MR-based head model for navigated brain stimulation. *Psychiatry Research: Neuroimaging*, **203**(1), 105–8.
- Cascio, C.J., Moore, D., McGlone, F. (2019). Social touch and human development. *Developmental Cognitive Neuroscience*, **35**, 5–11.
- Case, L.K., Laubacher, C.M., Olausson, H., Wang, B., Spagnolo, P.A., Bushnell, M.C. (2016). Encoding of touch intensity but not pleasantness in human primary somatosensory cortex. *Journal of Neuroscience*, **36**(21), 5850–60.
- Case, L.K., Laubacher, C.M., Richards, E.A., Spagnolo, P.A., Olausson, H., Bushnell, M.C. (2017). Inhibitory rTMS of secondary somatosensory cortex reduces intensity but not pleasantness of gentle touch. *Neuroscience Letters*, **653**, 84–91.
- Cazzato, V., Mian, E., Serino, A., Mele, S., Urgesi, C. (2014). Distinct contributions of extrastriate body area and temporoparietal junction in perceiving one's own and others' body. *Cognitive, Affective & Behavioral Neuroscience*, **15**(1), 211–28.
- Cazzato, V., Sacchetti, S., Shin, S., Makdani, A., Trotter, P.D., McGlone, F. (2021). Affective touch topography and body image. *PLoS ONE*, **16**(11), 1–24.
- Chan, A.W.Y., Baker, C.I. (2015). Seeing is not feeling: posterior parietal but not somatosensory cortex engagement during touch observation. *Journal of Neuroscience*, **35**(4), 1468–80.
- Chen, Y., Li, Q., Zhang, Q., et al. (2020). The effects of intranasal oxytocin on neural and behavioral responses to social touch in the form of massage. *Frontiers in Neuroscience*, **14**, 1–17.
- Clausen, L., Rosenvinge, J.H., Friberg, O., Rokkedal, K. (2011). Validating the Eating Disorder Inventory-3 (EDI-3): a comparison between 561 female eating disorders patients and 878 females from the general population. *Journal of Psychopathology and Behavioral Assessment*, **33**, 101–10.
- Cohen, L.G., Bandinelli, S., Sato, S., Kufta, C., Hallett, M. (1991). Attention in detection of somatosensory stimuli by transcranial magnetic stimulation. *Electroencephalography and Clinical Neurophysiology/Evoked Potentials Section*, **81**(5), 366–76.
- Craig, A.D. (2002). How do you feel? Interoception: the sense of the physiological condition of the body. *Nature Reviews Neuroscience*, **3**(8), 655–66.
- Craig, A.D. (2009). How do you feel—now? The anterior insula and human awareness. *Nature Reviews Neuroscience*, **10**(1), 59–70.
- Critchley, H.D., Wiens, S., Rotshtein, P., Öhman, A., Dolan, R.J. (2004). Neural systems supporting interoceptive awareness. *Nature Neuroscience*, **7**(2), 189–95.
- Croy, I., Luong, A., Tricoli, C., Hofmann, E., Olausson, H., Sailer, U. (2016). Interpersonal stroking touch is targeted to C tactile afferent activation. *Behavioural Brain Research* *SreeTestContent1*, **297**, 37–40.
- Crucianelli, L., Cardi, V., Treasure, J., Jenkinson, P.M., Fotopoulou, A. (2016). The perception of affective touch in anorexia nervosa. *Psychiatry Research*, **239**(1), 72–8.
- Crucianelli, L., Demartini, B., Goeta, D. et al. (2021). The Anticipation and Perception of Affective Touch in Women with and Recovered from Anorexia Nervosa. *Neuroscience*, **464**, 143–55.
- Crucianelli, L., Serpell, L., Paloyelis, Y., et al. (2019). The effect of intranasal oxytocin on the perception of affective touch and multisensory integration in anorexia nervosa: protocol for a double-blind placebo-controlled crossover study. *BMJ Open*, **9**(3), 1–13.
- Darmani, G., Bergmann, T.O., Pauly, K.B., et al. (2022). Non-invasive transcranial ultrasound stimulation for neuromodulation. *Clinical Neurophysiology*, **135**, 51–73.
- Davidovic, M., Karjalainen, L., Starck, G., Wentz, E., Björnsdotter, M., Olausson, H. (2018). Abnormal brain processing of gentle touch in anorexia nervosa. *Psychiatry Research: Neuroimaging*, **281**(1), 53–60.
- Davidovic, M., Starck, G., Olausson, H. (2019). Processing of affective and emotionally neutral tactile stimuli in the insular cortex. *Developmental Cognitive Neuroscience*, **35**, 94–103.
- Davis, M.H. (1983). Measuring individual differences in empathy: evidence for a multidimensional approach. *Journal of Personality and Social Psychology*, **44**(1), 113–26.
- Decety, J., Sommerville, J.A. (2003). Shared representations between self and other: a social cognitive neuroscience view. *Trends in Cognitive Sciences*, **7**(12), 527–33.
- de Jong, J.R., Keizer, A., Engel, M.M., Dijkerman, H.C. (2017). Does affective touch influence the virtual reality full body illusion? *Experimental Brain Research*, **235**, 1781–91.
- Della Longa, L., Valori, I., Farroni, T. (2022). Interpersonal affective touch in a virtual world: feeling the social presence of others to overcome loneliness. *Frontiers in Psychology*, **12**, 1–17.
- Deschrijver, E., Wiersema, J.R., Brass, M. (2016). The interaction between felt touch and tactile consequences of observed actions: an action-based somatosensory congruency paradigm. *Social Cognitive and Affective Neuroscience*, **11**(7), 1162–72.
- Devine, S.L., Walker, S.C., Makdani, A., et al. (2020). Childhood adversity and affective touch perception: a comparison of United Kingdom care leavers and non-care leavers. *Frontiers in Psychology*, **11**, 1–10.
- Dienes, Z. (2011). Bayesian versus orthodox statistics: which side are you on? *Perspectives on Psychological Science*, **6**(3), 274–90.
- Ding, L., Shou, G., Yuan, H., Urbano, D., Cha, Y.H. (2014). Lasting modulation effects of rTMS on neural activity and connectivity as revealed by resting-state EEG. *IEEE Transactions on Biomedical Engineering*, **61**(7), 2070–80.

- Ebisch, S.J., Ferri, F., Salone, A., et al. (2011). Differential involvement of somatosensory and interoceptive cortices during the observation of affective touch. *Journal of Cognitive Neuroscience*, **23**(7), 1808–22.
- Ebisch, S.J., Perrucci, M.G., Ferretti, A., Del Gratta, C., Romani, G.L., Gallese, V. (2008). The sense of touch: embodied simulation in a visuotactile mirroring mechanism for observed animate or inanimate touch. *Journal of Cognitive Neuroscience*, **20**(9), 1611–23.
- Ellingsen, D.M., Leknes, S., Løseth, G., Wessberg, J., Olausson, H. (2016). The neurobiology shaping affective touch: expectation, motivation, and meaning in the multisensory context. *Frontiers in Psychology*, **6**, 1–16.
- Eshkevari, E., Rieger, E., Musiat, P., Treasure, J. (2014). An investigation of interoceptive sensitivity in eating disorders using a heartbeat detection task and a self-report measure. *European Eating Disorders Review*, **22**(5), 383–8.
- Evrard, H.C., Craig, A.D.B. (2015). Insular cortex. In: Toga, A.W., editor. *Brain Mapping: An Encyclopedic Reference*. 387–93, Cambridge, MA: Academic Press.
- Faul, F., Erdfelder, E., Buchner, A., Lang, A.G. (2009). Statistical power analyses using G\* Power 3.1: tests for correlation and regression analyses. *Behavior Research Methods*, **41**(4), 1149–60.
- Friston, K., Sporns, O. (2008). Hierarchical Models in the Brain. *PLoS Comput Biol*, **4**, e1000211.
- Friston, K.J., Stephan, K. E. (2007). Free-energy and the brain. *Synthese*, **159**, 417–58.
- Frith, C.D., Frith, U. (2006). The neural basis of mentalizing. *Neuron*, **50**(4), 531–4.
- Frith, U., Frith, C.D., Frith, C.D., Wolpert, D.M. (2003). Development and neurophysiology of mentalizing. *Philosophical Transactions of the Royal Society of London. Series B, Biological Sciences*, **358**(1431), 459–73.
- Gallagher, H.L., Frith, C.D. (2003). Functional imaging of 'theory of mind'. *Trends in Cognitive Sciences*, **7**(2), 77–83.
- Gallese, V. (2005). Embodied simulation: from neurons to phenomenal experience. *Phenomenology and the Cognitive Sciences*, **4**, 23–48.
- Garner, D.M. (2004). EDI-3, eating disorder inventory-3: professional manual. Psychological Assessment Resources, Incorporated.
- Gazzola, V., Aziz-Zadeh, L., Keysers, C. (2006). Empathy and the somatotopic auditory mirror system in humans. *Current Biology*, **16**(18), 1824–9.
- Goldsworthy, M.R., Pitcher, J.B., Ridding, M.C. (2012). A comparison of two different continuous theta burst stimulation paradigms applied to the human primary motor cortex. *Clinical Neurophysiology*, **123**(11), 2256–63.
- Goodin, P., Lamp, G., Vidyasagar, R., McArdle, D., Seitz, R.J., Carey, L.M. (2018). Altered functional connectivity differs in stroke survivors with impaired touch sensation following left and right hemisphere lesions. *NeuroImage: Clinical*, **18**, 342–55.
- Gordon, I., Voos, A.C., Bennett, R.H., Bolling, D.Z., Pelphrey, K.A., Kaiser, M.D. (2013). Brain mechanisms for processing affective touch. *Human Brain Mapping*, **34**(4), 914–22.
- Grafton, S.T. (2009). Embodied cognition and the simulation of action to understand others. *Annals of the New York Academy of Sciences*, **1156**(1), 97–117.
- Haggarty, C.J., Makdani, A., McGlone, F. (2023). Affective touch: psychophysics, physiology and vicarious touch perception. In: Holmes, N.P., editor. *Somatosensory Research Methods*. New York, NY: Springer US, 109–28.
- Haggarty, C.J., Moore, D.J., Trotter, P.D., Hagan, R., McGlone, F.P., Walker, S.C. (2021a). Vicarious ratings of social touch the effect of age and autistic traits. *Scientific Reports*, **11**(1), 1–13.
- Haggarty, C.J., Trotter, P.D., McGlone, F., Walker, S.C., Tremblay, F. (2021b). Children's vicarious ratings of social touch are tuned to the velocity but not the location of a caress. *PLoS ONE*, **16**(8), 1–11.
- Hallett, M. (2007). Transcranial magnetic stimulation: a primer. *Neuron*, **55**(2), 187–99.
- Harjunen, V.J., Spapé, M., Ahmed, I., Jacucci, G., Ravaja, N. (2017). Individual differences in affective touch: behavioral inhibition and gender define how an interpersonal touch is perceived. *Personality and Individual Differences*, **107**, 88–95.
- Holle, H., Banissy, M.J., Ward, J. (2013). Functional and structural brain differences associated with mirror-touch synaesthesia. *NeuroImage*, **83**, 1041–50.
- Huang, Y., Rao, R.P. (2011). Predictive coding. *Wiley Interdisciplinary Reviews. Cognitive Science*, **2**(5), 580–93.
- JASP Team. (2022). JASP (Version 0.16.3). <https://jasp-stats.org/>.
- Jeffreys, H. (1961). *Theory of Probability*, 3rd edn. Oxford, UK: Oxford University Press.
- Jönsson, E.H., Bendas, J., Weidner, K., et al. (2017). The relation between human hair follicle density and touch perception. *Scientific Reports*, **7**(1), 1–10.
- Jorgensen, L., Castle, D., Roberts, C., Groth-Marnat, G. (2001). A clinical validation of the Dysmorphic Concern Questionnaire. *Australian and New Zealand Journal of Psychiatry*, **35**(1), 124–8.
- Kalaska, J.F. (1994). Central neural mechanisms of touch and proprioception. *Canadian Journal of Physiology and Pharmacology*, **72**(5), 542–5.
- Kanbara, K., Fukunaga, M. (2016). Links among emotional awareness, somatic awareness and autonomic homeostatic processing. *BioPsychoSocial Medicine*, **10**(1), 1–11.
- Keizer, A., Smeets, M.A.M., Dijkerman, H.C., et al. (2011). Tactile body image disturbance in anorexia nervosa. *Psychiatry Research*, **190**(1), 115–20.
- Keizer, A., Smeets, M.A.M., Dijkerman, H.C., van Elburg, A., Postma, A. (2012). Aberrant somatosensory perception in anorexia nervosa. *Psychiatry Research*, **200**(2-3), 530–7.
- Keysers, C., Gazzola, V., Wagenmakers, E.J. (2020). Using Bayes factor hypothesis testing in neuroscience to establish evidence of absence. *Nature Neuroscience*, **23**(7), 788–99.
- Keysers, C., Kaas, J.H., Gazzola, V. (2010). Somatosensation in social perception. *Nature Reviews Neuroscience*, **11**(6), 417–28.
- Keysers, C., Wicker, B., Gazzola, V., Anton, J.L., Fogassi, L., Gallese, V. (2004). A touching sight: SII/PV activation during the observation and experience of touch. *Neuron*, **42**(2), 335–46.
- Khalsa, S.S., Adolphs, R., Cameron, O.G., et al. (2018). Interoception and mental health: a roadmap. *Biological Psychiatry: Cognitive Neuroscience and Neuroimaging*, **3**(6), 501–13.
- Koster-Hale, J., Saxe, R. (2013). Theory of mind: a neural prediction problem. *Neuron*, **79**(5), 836–48.
- Kreuder, A.K., Scheele, D., Wassermann, L., et al. (2017). How the brain codes intimacy: the neurobiological substrates of romantic touch. *Human Brain Mapping*, **38**(9), 4525–34.
- Kuehn, E., Trampel, R., Mueller, K., Turner, R., Schütz-Bosbach, S. (2013). Judging roughness by sight—a 7-tesla fMRI study on responsivity of the primary somatosensory cortex during observed touch of self and others. *Human Brain Mapping*, **34**(8), 1882–95.
- Lieberman, M.D., Straccia, M.A., Meyer, M.L., Du, M., Tan, K.M. (2019). Social, self, (situational), and affective processes in medial prefrontal cortex (MPFC): causal, multivariate, and reverse inference evidence. *Neuroscience and Biobehavioral Reviews*, **99**, 311–28.
- Liu, Q., Vrontou, S., Rice, F.L., Zylka, M.J., Dong, X., Anderson, D.J. (2007). Molecular genetic visualization of a rare subset

- of unmyelinated sensory neurons that may detect gentle touch. *Nature Neuroscience*, **10**(8), 946–8.
- Löken, L.S., Evert, M., Wessberg, J. (2011). Pleasantness of touch in human glabrous and hairy skin: order effects on affective ratings. *Brain Research*, **1417**, 9–15.
- Löken, L.S., Wessberg, J., Olausson, H., Olausson, H., Olausson, H. (2009). Coding of pleasant touch by unmyelinated afferents in humans. *Nature Neuroscience*, **12**(5), 547–8.
- Lucas, M.V., Anderson, L.C., Bolling, D.Z., Pelphrey, K.A., Kaiser, M.D. (2015). Dissociating the neural correlates of experiencing and imagining affective touch. *Cerebral Cortex*, **25**(9), 2623–30.
- Macaluso, E., Driver, J. (2001). Spatial attention and crossmodal interactions between vision and touch. *Neuropsychologia*, **39**(12), 1304–16.
- Mancuso, S.G., Knoesen, N.P., Castle, D.J. (2010). The Dysmorphic Concern Questionnaire: a screening measure for body dysmorphic disorder. *Australian & New Zealand Journal of Psychiatry*, **44**(6), 535–42.
- Mar, R.A. (2011). The neural bases of social cognition and story comprehension. *Annual Review of Psychology*, **62**, 103–34.
- Massaccesi, C., Korb, S., Skoluda, N., Nater, U.M., Silani, G. (2021). Effects of appetitive and aversive motivational states on wanting and liking of interpersonal touch. *Neuroscience*, **464**, 12–25.
- McGlone, F., Wessberg, J., Olausson, H. (2014). Discriminative and affective touch: sensing and feeling. *Neuron*, **82**(4), 737–55.
- Mehling, W.E., Price, C., Daubenmier, J.J., Acree, M., Bartmess, E., Stewart, A. (2012). The multidimensional assessment of interoceptive awareness (MAIA). *PLoS ONE*, **7**(11), 1–22.
- Montoya, P., Sitges, C. (2006). Affective modulation of somatosensory-evoked potentials elicited by tactile stimulation. *Brain Research*, **1068**(1), 205–12.
- Morrison, I. (2016). ALE meta-analysis reveals dissociable networks for affective and discriminative aspects of touch. *Human Brain Mapping*, **37**(4), 1308–20.
- Morrison, I., Löken, L.S., Minde, J., et al. (2011). Reduced C-afferent fibre density affects perceived pleasantness and empathy for touch. *Brain*, **134**(4), 1116–26.
- Morrison, I., Löken, L.S., Olausson, H. (2010). The skin as a social organ. *Experimental Brain Research*, **204**(3), 305–14.
- Nelson, C.A., Fox, N.A., Zeanah, C.H. (2014). *Romania's Abandoned Children. Deprivation, Brain Development, and the Struggle for Recovery*. Cambridge: Harvard University Press.
- Olausson, H., Cole, J., Rylander, K., et al. (2008). Functional role of unmyelinated tactile afferents in human hairy skin: sympathetic response and perceptual localization. *Experimental Brain Research*, **184**, 135–40.
- Olausson, H., Lamarre, Y., Backlund, H., et al. (2002). Unmyelinated tactile afferents signal touch and project to insular cortex. *Nature Neuroscience*, **5**(9), 900–4.
- Olausson, H., Wessberg, J., Vallbo, Å., Vallbo, Å., Vallbo, Å. (2010). The neurophysiology of unmyelinated tactile afferents. *Neuroscience and Biobehavioral Reviews*, **34**(2), 185–91.
- Oosthuizen, P., Lambert, T., Castle, D.J. (1998). Dysmorphic concern: prevalence and associations with clinical variables. *Australian and New Zealand Journal of Psychiatry*, **32**(1), 129–32.
- Peled-Avron, L., Glasner, L., Gvirtz, H.Z., Shamay-Tsoory, S.G. (2019). The role of the inferior frontal gyrus in vicarious social touch: a transcranial direct current stimulation (tDCS) study. *Developmental Cognitive Neuroscience*, **35**, 115–21.
- Pihko, E., Nangini, C., Jousmäki, V., Hari, R. (2010). Observing touch activates human primary somatosensory cortex. *European Journal of Neuroscience*, **31**(10), 1836–43.
- Pisoni, A., Lauro, L.J.R., Vergallito, A., Maddaluno, O., Bolognini, N. (2018). Cortical dynamics underpinning the self-other distinction of touch: a TMS-EEG study. *NeuroImage*, **178**, 475–84.
- Pozdniakov, I., Vorobiova, A.N., Galli, G., Rossi, S., Feurra, M. (2021). Online and offline effects of transcranial alternating current stimulation of the primary motor cortex. *Scientific Reports*, **11**(1), 1–10.
- Rigato, S., Bremner, A.J., Gillmeister, H., Banissy, M.J. (2019). Interpersonal representations of touch in somatosensory cortex are modulated by perspective. *Biological Psychology*, **146**, 1–30.
- Rizzolatti, G., Sinigaglia, C. (2016). The mirror mechanism: a basic principle of brain function. *Nature Reviews Neuroscience*, **17**(12), 757–65.
- Rossi, S., Hallett, M., Rossini, P.M., Pascual-Leone, A. (2011). Screening questionnaire before TMS: an update. *Clinical Neurophysiology*, **122**(8), 1686.
- Saporta, N., Peled-Avron, L., Scheele, D., Lieberz, J., Hurlmann, R., Shamay-Tsoory, S.G. (2022). Touched by loneliness—how loneliness impacts the response to observed human touch: a tDCS study. *Social Cognitive and Affective Neuroscience*, **17**(1), 142–50.
- Schaefer, M., Heinze, H.J., Rotte, M. (2012). Embodied empathy for tactile events: interindividual differences and vicarious somatosensory responses during touch observation. *NeuroImage*, **60**(2), 952–7.
- Schaefer, M., Xu, B., Flor, H., Cohen, L.G. (2009). Effects of different viewing perspectives on somatosensory activations during observation of touch. *Human Brain Mapping*, **30**(9), 2722–30.
- Schulz, A., Ferreira de Sá, D.S., Dierolf, A.M., et al. (2015). Short-term food deprivation increases amplitudes of heartbeat-evoked potentials. *Psychophysiology*, **52**(5), 695–703.
- Schurz, M., Radua, J., Aichhorn, M., Richlan, F., Perner, J. (2014). Fractionating theory of mind: a meta-analysis of functional brain imaging studies. *Neuroscience and Biobehavioral Reviews*, **42**, 9–34.
- Seinfeld, S., Schmidt, I., Müller, J. (2022). Evoking realistic affective touch experiences in virtual reality. *arXiv preprint arXiv:2202.13389*.
- Serino, A., Giovagnoli, G., Làdavas, E., Ferrari, P.F. (2009). I feel what you feel if you are similar to me. *PLoS ONE*, **4**(3), 1–7.
- Serino, A., Pizzoferrato, F., Làdavas, E. (2008). Viewing a face (especially one's own face) being touched enhances tactile perception on the face. *Psychological Science*, **19**(5), 434–8.
- Sperduti, M., Delaveau, P., Fossati, P., Nadel, J. (2011). Different brain structures related to self- and external-agency attribution: a brief review and meta-analysis. *Brain Structure & Function*, **216**, 151–7.
- Stuss, D.T., Gallup, G.G., Jr, Alexander, M.P. (2001). The frontal lobes are necessary for theory of mind. *Brain*, **124**(2), 279–86.
- Suvilehto, J.T., Glerean, E., Dunbar, R.I., Hari, R., Nummenmaa, L. (2015). Topography of social touching depends on emotional bonds between humans. *Proceedings of the National Academy of Sciences*, **112**(45), 13811–6.
- Tamè, L., Pavani, F., Braun, C., Salemme, R., Farnè, A., Reilly, K.T. (2015). Somatotopy and temporal dynamics of sensorimotor interactions: evidence from double afferent inhibition. *European Journal of Neuroscience*, **41**(11), 1459–65.
- Taylor-Clarke, M., Kennett, S., Haggard, P. (2002). Vision modulates somatosensory cortical processing. *Current Biology*, **12**(3), 233–6.
- Tegenthoff, M., Ragert, P., Pleger, B., et al. (2005). Improvement of tactile discrimination performance and enlargement of cortical somatosensory maps after 5 Hz rTMS. *PLoS Biology*, **3**(11), 2031–40.

- Tricoli, C., Ackerley, R., Sailer, U., Hoffmann, H. (2014). Touch satiety: differential effects of stroking velocity on liking and wanting touch over repetitions. *PLoS ONE*, **9**(11), 1–8.
- Trotter, P., Belovol, E., McGlone, F., Varlamov, A., Sailer, U. (2018a). Validation and psychometric properties of the Russian version of the Touch Experiences and Attitudes Questionnaire (TEAQ-37 Rus). *PLoS ONE*, **13**(12), 1–25.
- Trotter, P.D., McGlone, F., Reniers, R.L.E.P., Deakin, J.F.W. (2018b). Construction and validation of the Touch Experiences and Attitudes Questionnaire (TEAQ): a self-report measure to determine attitudes toward and experiences of positive touch. *Journal of Nonverbal Behavior*, **42**(4), 379–416.
- Valenzuela-Moguillansky, C., Reyes-Reyes, A. (2015). Psychometric properties of the multidimensional assessment of interoceptive awareness (MAIA) in a Chilean population. *Frontiers in Psychology*, **6**(120), 1–12.
- von Mohr, M., Kirsch, L.P., Fotopoulou, A. (2017). The soothing function of touch: affective touch reduces feelings of social exclusion. *Scientific Reports*, **7**(1), 1–9.
- Voos, A.C., Pelphey, K.A., Kaiser, M.D. (2013). Autistic traits are associated with diminished neural response to affective touch. *Social Cognitive and Affective Neuroscience*, **8**(4), 378–86.
- Wagenmakers, E.J., Marsman, M., Jamil, T., et al. (2018). Bayesian inference for psychology. Part I: theoretical advantages and practical ramifications. *Psychonomic Bulletin & Review*, **25**, 35–57.
- Walker, S.C., Trotter, P.D., Woods, A., McGlone, F. (2017). Vicarious ratings of social touch reflect the anatomical distribution & velocity tuning of C-tactile afferents: a hedonic homunculus? *Behavioural Brain Research*, **320**, 91–6.
- Watkins, R.H., Dione, M., Ackerley, R., Backlund Wasling, H., Wessberg, J., Löken, L.S. (2021). Evidence for sparse C-tactile afferent innervation of glabrous human hand skin. *Journal of Neurophysiology*, **125**(1), 232–7.
- Wood, R., Gallese, V., Cattaneo, L. (2010). Visuotactile empathy within the primary somatosensory cortex revealed by short-latency afferent inhibition. *Neuroscience Letters*, **473**(1), 28–31.
- Zopf, R., Kosourikhina, V., Brooks, K.R., Polito, V., Stephen, I.D. (2021). Visual body-size adaptation and estimation of tactile distance. *British Journal of Psychology*, **112**(4), 1012–27.