



## LJMU Research Online

Moejes, KB, Sherif, RSR, Dürr, S, Conlan, S, Mason, A and Korostynska, O

**Real-Time Monitoring of Tetraselmis suecica in A Saline Environment as Means of Early Water Pollution Detection.**

<http://researchonline.ljmu.ac.uk/9635/>

### Article

**Citation** (please note it is advisable to refer to the publisher's version if you intend to cite from this work)

**Moejes, KB, Sherif, RSR, Dürr, S, Conlan, S, Mason, A and Korostynska, O (2018) Real-Time Monitoring of Tetraselmis suecica in A Saline Environment as Means of Early Water Pollution Detection. Toxics, 6 (4). ISSN 2305-6304**

LJMU has developed **LJMU Research Online** for users to access the research output of the University more effectively. Copyright © and Moral Rights for the papers on this site are retained by the individual authors and/or other copyright owners. Users may download and/or print one copy of any article(s) in LJMU Research Online to facilitate their private study or for non-commercial research. You may not engage in further distribution of the material or use it for any profit-making activities or any commercial gain.

The version presented here may differ from the published version or from the version of the record. Please see the repository URL above for details on accessing the published version and note that access may require a subscription.

For more information please contact [researchonline@ljmu.ac.uk](mailto:researchonline@ljmu.ac.uk)

<http://researchonline.ljmu.ac.uk/>

Article

# Real-Time Monitoring of *Tetraselmis suecica* in A Saline Environment as Means of Early Water Pollution Detection

Karin Brenda Moejes <sup>1</sup>, Reshma Sulthana Rahiman Sherif <sup>2</sup>, Simone Dürr <sup>1</sup>, Sheelagh Conlan <sup>1</sup>, Alex Mason <sup>3</sup> and Olga Korostynska <sup>2,\*</sup>

<sup>1</sup> Natural Sciences and Psychology, Faculty of Science, Liverpool John Moores University, Liverpool L3 3AF, UK; K.B.Moejes@2016.ljmu.ac.uk (K.B.M.); s.t.durr@ljmu.ac.uk (S.D.); S.L.Conlan@ljmu.ac.uk (S.C.)

<sup>2</sup> Faculty of Engineering and Technology, BEST Research Institute, Liverpool John Moores University, Liverpool L3 3AF, UK; reshmasulthana@hotmail.com

<sup>3</sup> Dept. Quality and Processing, Animalia AS, Norwegian Meat and Poultry Research Centre, P.O. Box 396 Økern, 0513 Oslo, Norway; alex.mason@animalia.no

\* Correspondence: o.korostynska@ljmu.ac.uk; Tel.: +44-151-231-2807

Received: 15 August 2018; Accepted: 27 September 2018; Published: 28 September 2018



**Abstract:** Biological water pollution, including organic pollutants and their possible transportation, via biofouling and ballast water, has the potential to cause severe economic and health impacts on society and environment. Current water pollution monitoring methods are limited by transportation of samples to the laboratory for analysis, which could take weeks. There is an urgent need for a water quality monitoring technique that generates real-time data. The study aims to assess the feasibility of three sensing techniques to detect and monitor the concentrations of the model species *Tetraselmis suecica* in real-time using eleven samples for each method. Results showed UV-Vis spectrophotometer detected increasing concentration of *Tetraselmis suecica* with  $R^2 = 0.9627$  and  $R^2 = 0.9672$ , at 450 nm and 650 nm wavelengths, respectively. Secondly, low-frequency capacitance measurements showed a linear relationship with increasing concentration of *Tetraselmis suecica* at 150 Hz ( $R^2 = 0.8463$ ) and 180 Hz ( $R^2 = 0.8391$ ). Finally, a planar electromagnetic wave sensor measuring the reflected power  $S_{11}$  amplitude detected increasing cell density at 4 GHz ( $R^2 = 0.8019$ ).

**Keywords:** biological water pollution; *Tetraselmis suecica*; UV-Vis spectroscopy; low-frequency impedance analysis; electromagnetic wave sensors; algae detection

## 1. Introduction

### 1.1. Pollution of Water with Microorganisms

Despite approximately 71% of Earth being covered with water, only 1% of that is freshwater accessible to humans [1,2]. An increasing global population and rise in associated anthropogenic pollutants, drive us towards the use of alternative water sources including seawater that can be treated and made potable [3]. Water quality is crucial to ensuring good health, ecosystem management, and economic development, and so it is imperative that we meet the increasing global demand for quality water. According to UN Water, the mortality rate due to poor water quality is nearly 3.5 million per year [4]. This has been addressed in The United Nations World Water Development Report 2015 and access to clean water has been named as one of the Sustainable Development Goals [5]. In order to achieve this goal, it is vital that various approaches are explored to ensure the standard of the water.

However, marine coastal waters are particularly vulnerable to pollution since coastlines are often highly urbanized with industrial activities and are considered the ultimate sink for sewage

and other anthropogenic by-products [6]. Sea and brackish water organisms can cause significant levels of pollution themselves by either producing high concentrations of toxins harmful to other organisms, including humans, or by being a contaminant themselves [7–9]. Many of these pollutants have achieved worldwide dispersal or are reaching some non-native regions by hitching on ships as a transport vector [10,11]. This problem, resulting from ballast water [12] and biofouling on ship surfaces [13] is recognized by the international shipping community and international regulations are in place to limit transport and introduction of non-native species [14].

The pollutants in question are either marine larvae, algal spores or planktonic organisms in the water column (ballast water) [15] as well as disease organisms, all of which have the potential to cause serious harm to human health. An example of this is the recent ballast water induced outbreaks of Cholera due to the bacterium *Vibrio cholera* [16–18]. Some pollutants from ballast water are themselves not a direct risk to humans, but due to bioaccumulation, the toxins can cause serious illness in other organisms at higher trophic levels, including humans if the concentration is high enough [9]. Paralytic shellfish poisoning (PSP) is such an illness and is caused by a high concentration of saxitoxin due to blooms (red tides) of mostly single-celled planktonic algae (e.g., dinoflagellates) [19–22]. The incidence of the disease has increased over the last few years together with a greater number of red tides [23]. Algae releasing toxins will not only pose harm to humans via the consumption of food organisms, but also via waterways and freshwater production in desalination plants [9,24–26]. Therefore, it is important to develop a sensor that can detect potential harmful species and determine their concentration in aqueous environment.

### 1.2. State-of-the-Art Detection Technology

Several methods are currently used to detect and remove water pollutants. However, in this fast-paced world there is a need for a real-time analysis system to monitor water pollution in order to provide timely and informed decisions on remediation actions. This study aims to determine the feasibility of using optical, low-frequency capacitance, and low-power microwave measurement techniques for the real-time monitoring of living organisms that cause water pollution, using *Tetraselmis suecica* as a model species. *T. suecica* is a Chlorophyceae class green flagellate marine algae [27] found in many marine environments [28]. It is commonly used in aquaculture as feed for molluscs, crustaceans, and fish due to its relative ease of culture and high nutrient levels [29].

Electromagnetic wave sensors can be used in the detection of a broad range of substances including lactate [30], blood-glucose levels [31], and chemical compound concentrations [32]. In terms of water pollution, Huang, Wei, and Liao developed a biosensor using a recombinant gene of a non-pathogenic strain of *Escherichia coli* that changes color when in contact with arsenic, thereby providing information about the presence and concentration of the heavy metal [33]. In this fast-moving world, there is a need for such quick and cost-effective options readily employed in the field.

### 1.3. UV-Vis Spectroscopy

Optical spectroscopy is a well-established lab-based technique used for the detection of numerous water pollutants. It is a reliable standard, but it is bulky and may require additional reagents to produce a chemical reaction with an associated color change. It measures the absorbance, transmittance or reflectance values of a light beam that interacts with the sample under investigation. The interaction is dependent on the composition of the sample, hence allowing the user to distinguish between the components. Beer-Lambert's law explains the relationship between absorbance and concentration in a simplified form:

$$A = \epsilon lc \quad (1)$$

where  $A$  is the absorbance of the sample

$\epsilon$  = molar absorption coefficient ( $\text{mol}^{-1} \text{dm}^3 \text{cm}^{-1}$ )

$l$  = path length of the sample (cm)

$c$  = concentration of the sample ( $\text{mol dm}^{-3}$ )

The above equation illustrates a linear relationship between the absorbance and the concentration of the sample. In this study, the same principle is applied to assess the relationship between absorbance and cell density of various *T. suecica* dilutions.

#### 1.4. Low-Frequency Capacitance Measurements

A capacitance sensing structure with two cylindrical rods connected to an impedance analyzer can measure the dielectric properties of a sample, such as the impedance, when a potential is applied. The following formula can be used to calculate the capacitance of the sample:

$$C = \frac{\pi\epsilon_0\epsilon_r l}{\ln\left(\frac{d}{a}\right)} \quad (2)$$

where  $C$  is the capacitance (F)

$\epsilon_0$  = dielectric constant of the sample between the sensor plates

$\epsilon_r$  = permittivity of free space,  $8.854 \times 10^{-12}$  F/m

$l$  = length of the rods (m)

$d$  = distance between the rods (m)

$a$  = radius of the rod (m)

The length of the rods, permittivity of free space, radius of the rod, and the distance between them remain constant, hence a linear relationship can be deduced between the capacitance of the sample and the dielectric constant of the same. The dielectric constant does not change for a particular sample, so if the capacitance is known, the dielectric constant can be calculated. This idea can be incorporated in a sensor to detect a living organism that may be present in a polluted water sample.

#### 1.5. Low Power Microwave Sensing

Electromagnetic (EM) wave sensors operating at microwave frequencies are seeing an increasing interest across a variety of applications, including in the food industry and in water analysis [34–41]. The sensors can typically be characterized as requiring low power (<1 mW) while retaining a controlled level of penetration into a target material, in this case, polluted water. In this work, measurements from a planar type EM wave sensor were captured in the form of a reflected energy ( $S_{11}$ ). This energy is coupled into the sensor and the  $S_{11}$  signal varies depending on properties of the water sample presented to the sensing structure, such as conductivity and permittivity. Conductivity is a measure of a material's ability to conduct an electric current, whereas permittivity is a measure of how an electric field is affected by a dielectric medium. This is determined by the ability of a material to polarize in response to the field and reduces the total electric field inside the material. Therefore, permittivity ( $\epsilon_r$ ), as defined in Equation (3), relates to a material's ability to transmit an electric field and is a complex value which varies with frequency and accounts for both the energy stored by a material ( $\epsilon'$ ) as well as any losses of energy ( $\epsilon''$ ) that may occur.

$$\epsilon_r = \epsilon' + j\epsilon'' \quad (3)$$

The permittivity of a material is derived from a number of characteristics (e.g., temperature, chemical structure, molecular composition, etc.) and is a measure of various polarization phenomena that occur over different frequency ranges when exposed to an alternating EM field [42]. This leads to dipolar polarization in polar molecules (such as lactate), which causes them to rotate over a time period proportional to their dipole moment and local conditions (e.g., viscosity). Since there is a delay between the dipolar polarization and the applied alternating EM field, dispersions exist whereby the molecule does not have sufficient time to fully align to the field, giving rise to dielectric relaxation in the microwave region of the EM spectrum. A number of mathematical models have

been developed by Cole and Cole [43], Cole and Davidson [44,45], and Havriliak and Negami [46] to explain relaxation phenomena. It is based upon these principles that EM wave sensors, operating at microwave frequencies, may selectively detect various species such as *T. suecica* in water.

## 2. Materials and Methods

### 2.1. *T. suecica* Culturing Process

Flasks of *T. suecica* were cultured in F/2 media and maintained at 18 °C with constant aeration and under artificial light [47,48].

### 2.2. Sample Preparation and Cell Count

A flask of cultured *T. suecica* was diluted with F/2 media to prepare the following concentrations up to 20 mL: 0%, 1%, 10%, 25%, 40%, 50%, 60%, 75%, 80%, and 100%. To 1.5 mL of 100% *T. suecica*, 0.5 mL Lugol's Iodine solution was added to immobilise the algae cells prior to counting. Cells were then visualised and counted on a haemocytometer at 10× magnification under a light microscope and cell density calculated. In addition to the 0% dilution (F/2 media only), 35 ppt enriched artificial seawater was prepared by dissolving Aquarium Systems Instant Ocean salt in distilled water and salinity was confirmed using a refractometer.

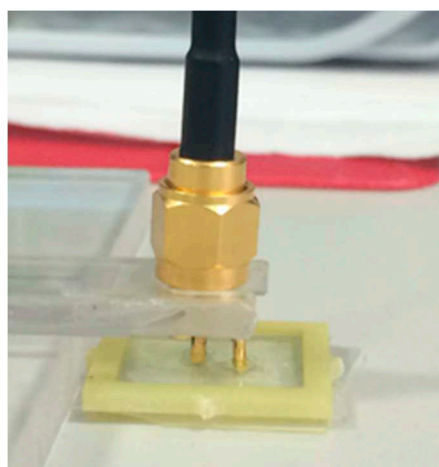
### 2.3. Optical Measurements with UV-Vis Spectroscopy

Three methods were implemented to compare the efficacy of their respective detection mechanisms. Using a spectrometer (Jenway 73 series), with a wavelength range from 200 nm to 1000 nm wavelength, the first parameter measured was absorbance. This method is widely used to measure algae biomass as the light absorbance can be directly related to cell density or cell number [49].

An absorbance baseline was first established using F/2 media and 35 ppt enriched artificial seawater (Aquarium Systems Instant Ocean salt, Blacksburg, VA, USA), followed by five repeats of each prepared sample in cuvettes across the wavelength range.

### 2.4. Low-Frequency Capacitance Measurements

The second method considered was a Low-Frequency Impedance Analyser used to measure the capacitance of the *T. suecica* dilutions. A gold-plated sensor with two electrodes (Figure 1) was connected to a LCR Bridge (Hameg HM8118) and was used to detect the capacitance values for frequencies from 20 Hz to 200 kHz.



**Figure 1.** Gold plated sensor used in low-frequency capacitance measurements.

A purpose-designed holder seen in Figure 1 was filled with 400  $\mu\text{L}$  of the sample, ensuring no air bubbles, and each sample had five repeat measurements.

### 2.5. Electromagnetic Wave Sensors

The third method examined was an electromagnetic wave sensor whereby the reflected power  $S_{11}$  was measured. A PTFE 8pr Au sensor (Figure 2) connected to a Vector Network Analyser (VNA, Rhode and Schwarz ZVA24) via one port was used to generate and receive a signal consisting of 60,000 data points from 10 MHz to 15 GHz. 400  $\mu\text{L}$  of each sample was pipetted into the FR4 reservoir for measurements; this was repeated five times for each sample.



**Figure 2.** PTFE 8pr Au sensor with FR4 reservoir and SMA connector.

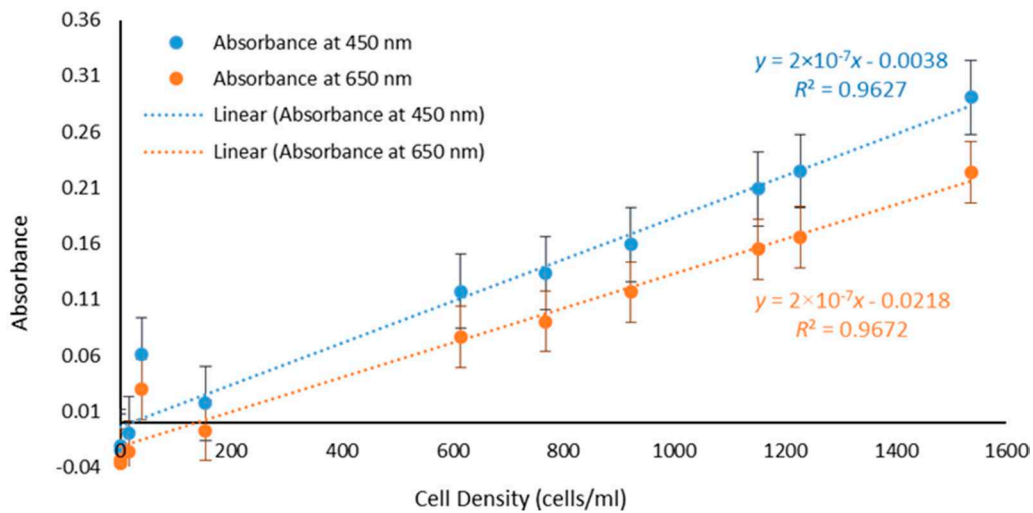
All experiments were undertaken in a temperature-controlled environment to minimize the effect of its variation on the experimental results, particularly due to the temperature dependence of the dielectric permittivity [50,51].

## 3. Results

### 3.1. UV-Vis Spectroscopy—Absorbance Versus Cell Density

Absorbance values for the samples with different cell densities at 450 nm and 650 nm as well as F/2 only and artificial seawater are plotted in Figure 3. A statistical analysis reveals that the  $R^2$  values at 450 nm and 650 nm were 0.9627 and 0.9672, respectively. The data highlights the linear relationship between absorbance and cell density at a constant wavelength, concurring with Beer-Lambert's law (1) and validating UV-Vis as an effective method for real-time assessment of algae biomass and water pollution. Absorbance can therefore be used as a parameter for measuring the presence of photosynthetic microorganisms.



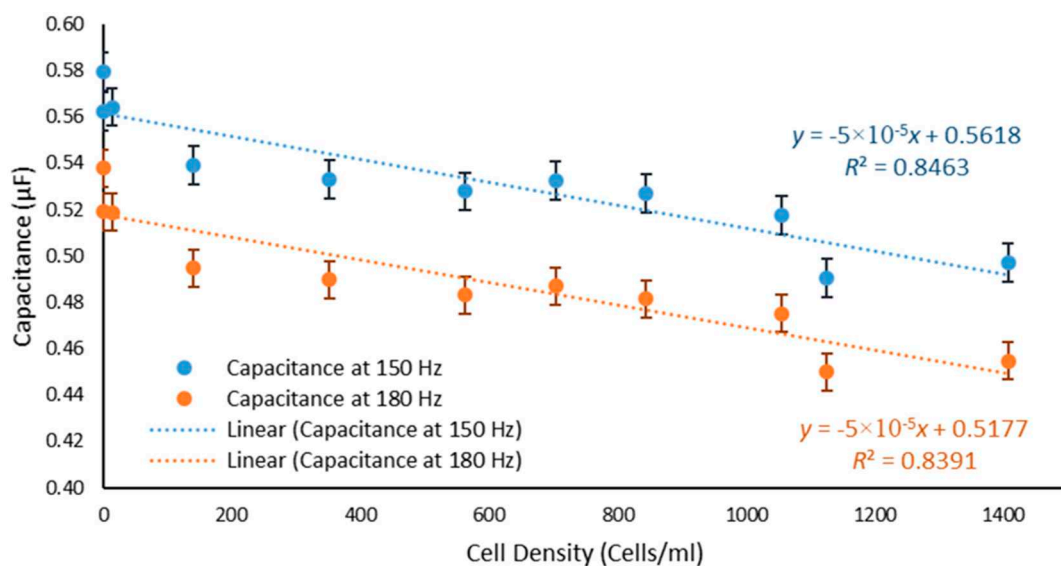


**Figure 3.** Linear increase in the value of the Absorbance with cell density at 450 nm ( $R^2 = 0.9627$ ) and 650 nm ( $R^2 = 0.9672$ ).

Optical spectroscopy is an effective and well-established lab-based method for detection of photosynthetic living organisms. However, this approach is time consuming as the samples typically have to be brought back to the lab for testing and cannot be done in situ.

### 3.2. Low-Frequency Analysis: Capacitance Versus Cell Density

Two frequencies, 150 Hz and 180 Hz, were selected and a graph showing a decrease in the value of the measured capacitance with increasing cell density is depicted in Figure 4. Statistical analysis of the data reveals that the  $R^2$  values for capacitance at 150 Hz and 180 Hz were 0.8463 and 0.8391, respectively. Furthermore, using the capacitance Equation (2) for a capacitor with two cylindrical rods, the dielectric constant of the material can be calculated. This can then be used as a database to detect the pollutant for a certain capacitance value.

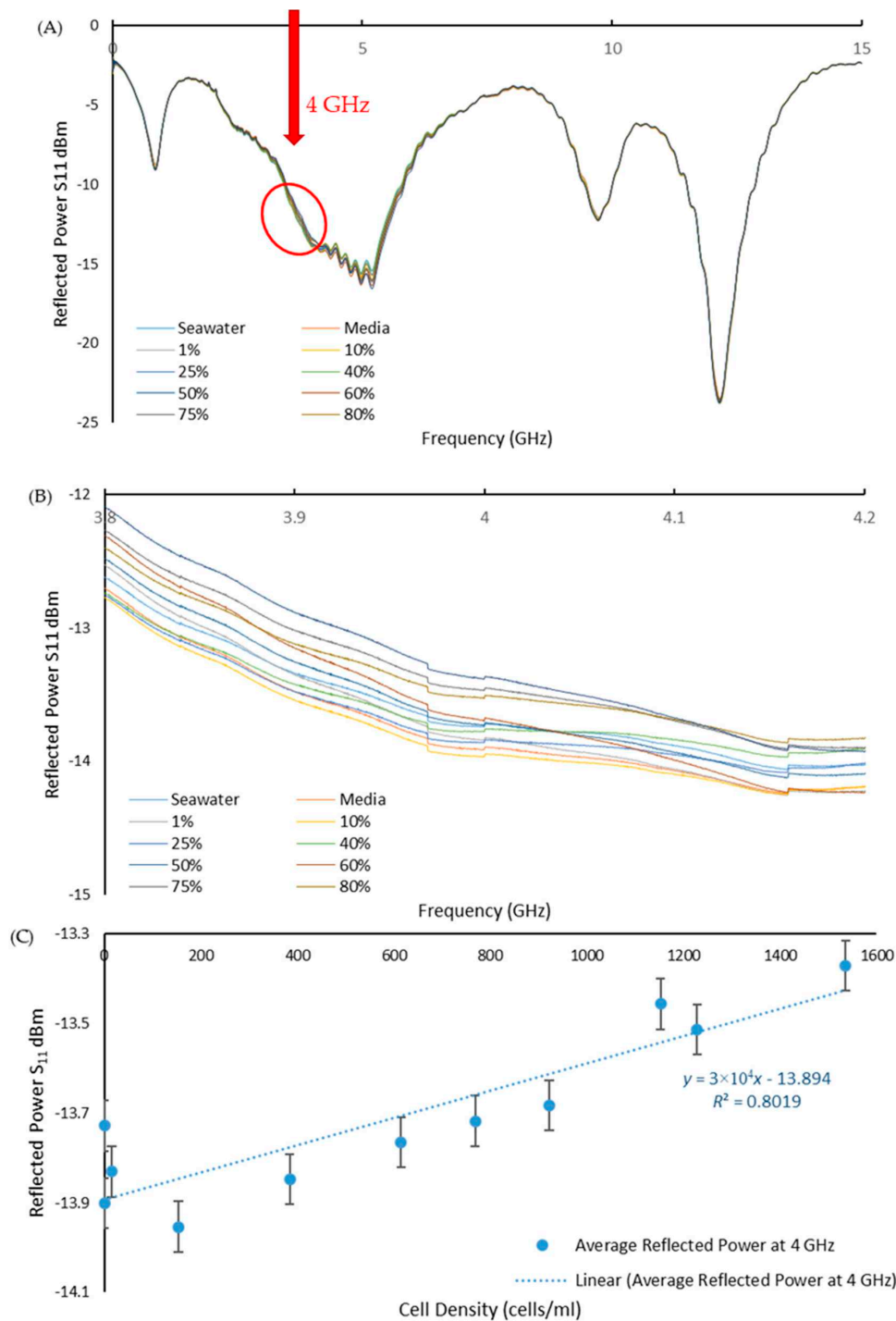


**Figure 4.** Dependence of capacitance on cell density.

### 3.3. Planar Electromagnetic Wave Sensors—Reflected Power $S_{11}$ Versus Cell Density

The reflected power spectra were measured across the full frequency range to assess the sensors ability to detect the range of *T. suecica* concentrations (Figure 5A). Looking closer at around 4 GHz,

Figure 5B shows the change in amplitude of the reflected power with cell concentration. As shown in Figure 5C, a selected frequency of 4 GHz provides a linear ( $R^2 = 0.8019$ ) calibration curve for change in the reflected power versus the cell density. This confirms that the planar electromagnetic wave sensor operating at microwave frequency range presents a viable option for real-time monitoring of water pollution with living organisms.



**Figure 5.** (A) Reflected power  $S_{11}$  versus frequency graph for PTFE 8pr Au in 0.01–15 GHz frequency range; (B) magnified part of spectra (A) (in red circle) in 3.8–4.2 GHz range to illustrate the effect of the cells concentration change on the amplitude of the reflected power signal; and (C) Linear change ( $R^2 = 0.8019$ ) in the reflected power  $S_{11}$  amplitude with increasing cell density at 4 GHz frequency.



#### 4. Discussion and Conclusions

To address the global need to develop a novel method for in situ water pollution analysis, three methods were investigated; absorbance measured with UV-Vis spectroscopy, low-frequency capacitance measurements on a LCR Bridge, and reflected power ( $S_{11}$ ) measured using a VNA with a low-power planar electromagnetic wave sensor. It was experimentally shown that these techniques were all able to detect the presence of the model species *T. suecica* at various concentrations.

UV-Vis spectroscopy demonstrates its well-established effectiveness as the experimental results verified the theory. At wavelengths from 400 nm to 450 nm and 650 nm to 700 nm the presence of various photosynthetic pigments, particularly chlorophyll *a*, allows for the detection of photosynthetic microorganisms [52,53]. It also validated Beer-Lambert's law, showing a linear relationship between the absorbance and concentration with  $R^2$  values of 0.9672 for 650 nm and 0.9627 for 450 nm respectively.

The LCR Bridge showed an inverse dependence of the measured capacitance on the concentration of cells present in the samples, with  $R^2$  values of 0.8463 and 0.8391 at 150 Hz and 180 Hz, respectively. The capacitive change caused by the presence of algae has previously been shown [54]:

$$\Delta C = C_{p,\text{cell}} - C_{p,m} = \frac{1}{2\pi f} \times \left[ \frac{Z_{\text{mix,img}}}{(Z_{\text{mix,real}})^2 + (Z_{\text{mix,img}})^2} - \frac{Z_{m,\text{img}}}{(Z_{m,\text{real}})^2 + (Z_{m,\text{img}})^2} \right] \quad (4)$$

where  $\Delta C$  is the change in capacitance (F)

$C_{p,\text{cell}}$  = Capacitance of the cell

$C_{p,m}$  = Capacitance of the medium

$Z$  = Impedance

$f$  = Frequency

$Z_{\text{mix,real}}$  ( $Z_{m,\text{real}}$ ) = Real parts of the complex permittivity of the suspension

$Z_{\text{mix,img}}$  ( $Z_{m,\text{img}}$ ) = Imagined parts of the complex permittivity of the suspension

The Equation (4) shows that capacitance will decrease with an increase in the measuring frequency as was shown when looking at 150 Hz compared to 180 Hz. Furthermore, with an increase in cell density, there is a decrease in the permittivity and therefore a decrease in capacitance.

Finally, a bespoke planar type electromagnetic sensor illustrated its ability to detect *T. suecica* at a range of concentration levels, with  $R^2 = 0.8019$  recorded for the reflected power  $S_{11}$  amplitude at around 4 GHz frequency, but non-linear dependence at other frequencies. At a cell concentration of zero, both the LCR Bridge and the planar electromagnetic sensor showed dependence due to the presence of salt in both the F/2 media and the enriched seawater medium being detected by the sensors as they also exhibit their own dielectric properties [55,56]. The decrease in relative permittivity with an increase in cell density results in a less negative reflection coefficient, as shown with the following equation:

$$R = \frac{1 - \sqrt{\epsilon_r}}{1 + \sqrt{\epsilon_r}} \quad (5)$$

where  $R$  is the reflection coefficient.

$\epsilon_r$  = Relative permittivity.

In conclusion, optical spectroscopy was the most established method, though the water samples would have to be brought back to the lab for analysis and would not be able to fulfil the requirement of the test in a small handheld device due to the need of minimal outside interference. However, there are several portable devices that are being developed that are less time-consuming, thus making them more suited for fieldwork. Notably, the bespoke microwave sensors offer a further practical solution for a cost-effective system for portable in situ evaluation of water pollution, instead of a VNA with 60,000 data outputs, only the minimum range of data points (frequencies) is needed for water pollutant detection and quantification in real-time. *T. suecica* is shown here as a model species to identify an alternative water pollution detection method using low frequency capacitance measurements or a

planar EM wave sensor. These technologies can be further developed and applied for the detection of bio-fouling or invasive species in ballast water to desalination and water treatment plants. Nonetheless, it is necessary to identify key frequencies specific to a targeted species, which represents the largest challenge, but the authors are advancing the research in this area.

**Author Contributions:** Conceptualization, O.K., A.M. and S.D.; Methodology, A.M., O.K., S.D. and S.C.; Validation, R.S.R.S. and K.B.M.; Formal Analysis, K.B.M.; Investigation, R.S.R.S. and K.B.M.; Resources, S.D., S.C., O.K. and A.M.; Writing-Original Draft Preparation, R.S.R.S.; Writing-Review & Editing, all; Visualization, K.B.M.; Supervision, S.D., S.C., O.K. and A.M.; Project Administration, S.D.; Funding Acquisition, S.D., S.C., O.K. and A.M.

**Funding:** This research was funded by Liverpool John Moores University and the APC was funded by MDPI.

**Acknowledgments:** The authors would like to thank Alan Simm, Jerry Bird, Rosie Horner, Ilaria Frau and Matteo Soprani for their assistance in the Natural Sciences Lab and the Sensor Technology Lab of the Liverpool John Moores University.

**Conflicts of Interest:** The authors declare no conflict of interest. The funders had no role in the design of the study; in the collection, analyses, or interpretation of data; in the writing of the manuscript, and in the decision to publish the results.

## References

1. USGS. How Much Water Is There on, in, and above the Earth. Available online: <https://water.usgs.gov/edu/earthhowmuch.html> (accessed on 7 August 2018).
2. Shiklomanov, I.A. Appraisal and Assessment of World Water Resources. *Water Int.* **2000**, *25*, 11–32. [[CrossRef](#)]
3. Ghernaout, D. The Best Available Technology of Water/Wastewater Treatment and Seawater Desalination: Simulation of the Open Sky Seawater Distillation. *Green Sustain. Chem.* **2013**, *3*, 68–88. [[CrossRef](#)]
4. UNWater. *Managing Water under Uncertainty and Risk*; UNWater: Geneva, Switzerland, 2012; Volume 1.
5. UNWater. *Water for a Sustainable World*; UNWater: Geneva, Switzerland, 2015.
6. Seoane, M.; Esperanza, M.; Rioboo, C.; Herrero, C.; Cid, Á. Flow Cytometric Assay to Assess Short-Term Effects of Personal Care Products on the Marine Microalga *Tetraselmis Suecica*. *Chemosphere* **2017**, *171*, 339–347. [[CrossRef](#)] [[PubMed](#)]
7. Faimali, M.; Giussani, V.; Piazza, V.; Garaventa, F.; Corrà, C.; Asnaghi, V.; Privitera, D.; Gallus, L.; Cattaneo-vietti, R.; Mangialajo, L.; et al. Toxic Effects of Harmful Benthic Dino Fl Agellate *Ostreopsis Ovata* on Invertebrate and Vertebrate Marine Organisms. *Mar. Environ. Res.* **2012**, *76*, 97–107. [[CrossRef](#)] [[PubMed](#)]
8. Lindholm, T.; Öhman, P.; Kurki-helasma, K.; Kincaid, B.; Meriluoto, J. Toxic Algae and Fish Mortality in a Brackish-Water Lake in Åland, SW Finland. *Hydrobiologia* **1999**, *397*, 109–120. [[CrossRef](#)]
9. Van Dolah, F.M. Marine Algal Toxins: Origins, Health Effects, and Their Increased Occurrence. *Environ. Health Perspect.* **2000**, *108* (Suppl. 1), 133–141. [[CrossRef](#)] [[PubMed](#)]
10. Hallegraef, G.M. A Review of Harmful Algal Blooms and Their Apparent Global Increase. *Phycologia* **1993**, *32*, 79–99. [[CrossRef](#)]
11. Marangoni, C.; Pienaar, R.N.; Sym, S.D. Possible Introduction of Alien Phytoplankton via Shipping Ballast Water: A South African Perspective. *S. Afr. J. Bot.* **2001**, *67*, 465–474. [[CrossRef](#)]
12. Ribeiro, S.; Amorim, A.; Andersen, T.J.; Abrantes, F.; Ellengaard, M. Reconstructing the History of an Invasion: The Toxic Phytoplankton Species *Gymnodinium Catenatum* in the Northeast Atlantic. *Biol. Invasions* **2012**, *14*, 969–985. [[CrossRef](#)]
13. Boudouresque, C.F.; Verlaque, M. Biological Pollution in the Mediterranean Sea: Invasive versus Introduced Macrophytes Charles Franc. *Mar. Pollut. Bull.* **2002**, *44*, 32–38. [[CrossRef](#)]
14. IMO. *International Convention for the Control and Management of Ships' Ballast Water and Sediments (BWM)*; International Maritime Organization: London, UK, 2004.
15. Streltars, N.; Zenetos, A. Alien Marine Species in the Mediterranean—The 100 'Worst Invasives' and Their Impact. *Mediterr. Mar. Sci.* **2006**, *7*, 87–118. [[CrossRef](#)]
16. Mccarthy, S.A.; Khambaty, F.M. International Dissemination of Epidemic *Vibrio Cholerae* by Cargo Ship Ballast and Other Nonpotable Waters. *Appl. Environ. Microbiol.* **1994**, *60*, 2597–2601.

17. Nicole, J.C.; Douglas, D.S.; Nina, M.; Jordan, W.T.; Michael, W.; Ryan, J.A.; Vincent, R.H.; David, E.; Thomas, H.; Ariel, H.; et al. Preventing Maritime Transfer of Toxigenic *Vibrio Cholerae*. *Emerg. Infect. Dis. J.* **2012**, *18*, 1680.
18. Ruiz, G.M.; Rawlings, T.K.; Dobbs, F.C.; Drake, L.A.; Mullady, T.; Huq, A.; Colwell, R.R. Global Spread of Microorganisms by Ships. *Nature* **2000**, *408*, 49–50. [[CrossRef](#)] [[PubMed](#)]
19. Anderson, D.M.; Couture, D.A.; Kleindinst, J.L.; Keafer, B.A.; McGillicuddy, D.J.; Martin, J.L.; Richlen, M.L.; Hickey, J.M.; Solow, A.R. Understanding Interannual, Decadal Level Variability in Paralytic Shellfish Poisoning Toxicity in the Gulf of Maine: The HAB Index. *Deep Sea Res. Part II Top. Stud. Oceanogr.* **2014**, *103*, 264–276. [[CrossRef](#)] [[PubMed](#)]
20. Cembella, A.D.; Sullivan, J.J.; Boyer, G.L.; Taylor, F.J.R.; Andersen, R.J. Variation in Paralytic Shellfish Toxin Composition within the *Pmtogonyaulax Tamarensiscatenella* Species Complex; Red Tide Dinoflagellates. *Biochem. Syst. Ecol.* **1987**, *15*, 171–186. [[CrossRef](#)]
21. Mee, L.D.; Espinosa, M.; Diaz, G. Paralytic Shellfish Poisoning with a *Gymnodinium Catenatum* Red Tide on the Pacific Coast of Mexico. *Mar. Environ. Res.* **1986**, *19*, 77–92. [[CrossRef](#)]
22. Negri, A.P.; Bolch, C.J.S.; Geier, S.; Green, D.H.; Park, T.; Blackburn, S.I. Widespread Presence of Hydrophobic Paralytic Shellfish Toxins in *Gymnodinium Catenatum*. *Harmful Algae* **2007**, *6*, 774–780. [[CrossRef](#)]
23. Hallegraeff, G.M. Ocean Climate Change, Phytoplankton Community Responses, and Harmful Algal Blooms: A Formidable Predictive Challenge. *J. Phycol.* **2010**, *46*, 220–235. [[CrossRef](#)]
24. Jochimsen, E.M.; Carmichael, W.W.; An, J.S.; Cardo, D.M.; Cookson, S.T.; Holmes, C.E.; Antunes, M.B.; de Melo Filho, D.A.; Lyra, T.M.; Barreto, V.S.; et al. Liver Failure and Death after Exposure to Microcystins at a Hemodialysis Center in Brazil. *N. Engl. J. Med.* **1998**, *338*, 873–878. [[CrossRef](#)] [[PubMed](#)]
25. Qin, B.; Zhu, G.; Gao, G.; Carmichael, W.W. A Drinking Water Crisis in Lake Taihu, China: Linkage to Climatic Variability and Lake Management. *Environ. Manag.* **2010**, *45*, 105–112. [[CrossRef](#)] [[PubMed](#)]
26. Ueno, Y.; Nagata, S.; Tsutsumi, T. Detection of Microcystins, a Blue-Green Algal Hepatotoxin, in Drinking Water Sampled in Haimen and Fusui, Endemic Areas of Primary Liver Cancer in China, by Highly Sensitive Immunoassay Haimen. *Carcinogenesis* **1996**, *17*, 1317–1321. [[CrossRef](#)] [[PubMed](#)]
27. Throndsen, J. Chapter 5—The Planktonic Marine Flagellates A2—Tomas, Carmelo R. In *Identifying Marine Phytoplankton*; Academic Press: San Diego, CA, USA, 1997; pp. 591–729.
28. Hori, T.; Norris, R.E.; Chihara, M. Studies on the Ultrastructure and Taxonomy of the Genus *Tetraselmis* (Prasinophyceae). *Bot. Mag.* **1982**, *95*, 49. [[CrossRef](#)]
29. Carballo-Cárdenas, E.C.; Tuan, P.M.; Janssen, M.; Wijffels, R.H. Vitamin E ( $\alpha$ -Tocopherol) Production by the Marine Microalgae *Dunaliella Tertiolecta* and *Tetraselmis Suecica* in Batch Cultivation. *Biomol. Eng.* **2003**, *20*, 139–147. [[CrossRef](#)]
30. Mason, A.; Goh, J.H.; Korostynska, O.; Al-Shamma'a, A.I.; Browning, P.; Field, M. Real-Time Monitoring of Bodily Fluids Using a Novel Electromagnetic Wave Sensor. *J. Public Health Front.* **2013**, *2*, 201–206. [[CrossRef](#)]
31. Caduff, A.; Talary, M.S.; Mueller, M.; Dewarrat, F.; Klisic, J.; Donath, M.; Heinemann, L.; Stahel, W.A. Non-Invasive Glucose Monitoring in Patients with Type 1 Diabetes: A Multisensor System Combining Sensors for Dielectric and Optical Characterisation of Skin. *Biosens. Bioelectron.* **2009**, *24*, 2778–2784. [[CrossRef](#)] [[PubMed](#)]
32. Korostynska, O.; Ortoneda-Pedrola, M.; Mason, A.; Al-Shamma'a, A.I. Flexible Electromagnetic Wave Sensor Operating at GHz Frequencies for Instantaneous Concentration Measurements of NaCl, KCl, MnCl<sub>2</sub> and CuCl Solutions. *Meas. Sci. Technol.* **2014**, *25*, 65105. [[CrossRef](#)]
33. Huang, C.-W.; Wei, C.-C.; Liao, V.H.-C. A Low Cost Color-Based Bacterial Biosensor for Measuring Arsenic in Groundwater. *Chemosphere* **2015**, *141*, 44–49. [[CrossRef](#)] [[PubMed](#)]
34. Agranovich, D.; Renhart, I.; Ben Ishai, P.; Katz, G.; Bezman, D.; Feldman, Y. A Microwave Sensor for the Characterization of Bovine Milk. *Food Control* **2016**, *63*, 195–200. [[CrossRef](#)]
35. Bjarnadottir, S.G.; Lunde, K.; Alvseike, O.; Mason, A.; Al-Shamma'a, A.I. Assessing Quality Parameters in Dry-Cured Ham Using Microwave Spectroscopy. *Meat Sci.* **2015**, *108*, 109–114. [[CrossRef](#)] [[PubMed](#)]
36. Jilani, M.; Wen, W.; Cheong, L.; ur Rehman, M. A Microwave Ring-Resonator Sensor for Non-Invasive Assessment of Meat Aging. *Sensors* **2016**, *16*, 52. [[CrossRef](#)] [[PubMed](#)]
37. Joshi, K.H.; Mason, A.; Korostynska, O.; Al-Shamma'a, A. Milk Quality Monitoring Using Electromagnetic Wave Sensors. In *Sensors for Everyday Life: Environmental and Food Engineering*; Mukhopadhyay, S.C., Postolache, O.A., Jayasundera, K.P., Swain, A.K., Eds.; Springer: Cham, Germany, 2017; pp. 205–227.

38. Korostynska, O.; Blakey, R.; Mason, A.; Al-Shamma'a, A. Novel Method for Vegetable Oil Type Verification Based on Real-Time Microwave Sensing. *Sens. Actuators A Phys.* **2013**, *202*, 211–216. [[CrossRef](#)]
39. Korostynska, O.; Mason, A.; Ortoneda-Pedrola, M.; Al-Shamma'a, A. Electromagnetic Wave Sensing of NO<sub>3</sub> and COD Concentrations for Real-Time Environmental and Industrial Monitoring. *Sens. Actuators B Chem.* **2014**, *198*, 49–54. [[CrossRef](#)]
40. Mason, A.; Abdullah, B.; Muradov, M.; Korostynska, O.; Al-Shamma'a, A.; Bjarnadottir, S.; Lunde, K.; Alvseike, O. Theoretical Basis and Application for Measuring Pork Loin Drip Loss Using Microwave Spectroscopy. *Sensors* **2016**, *16*, 182. [[CrossRef](#)] [[PubMed](#)]
41. Yang, J.; Huang, M.; Peng, J.; Shi, J. Rapid Determination of the Moisture Content of Milk Powder by Microwave Sensor. *Measurement* **2016**, *87*, 83–86. [[CrossRef](#)]
42. Blakey, R.T.; Morales-Partera, A.M. Microwave Dielectric Spectroscopy—A Versatile Methodology for Online, Non-Destructive Food Analysis, Monitoring and Process Control. *Eng. Agric. Environ. Food* **2016**, *9*, 264–273. [[CrossRef](#)]
43. Cole, K.S.; Cole, R.H. Dispersion and Absorption in Dielectrics I. Alternating Current Characteristics. *J. Chem. Phys.* **1941**, *9*, 341–351. [[CrossRef](#)]
44. Davidson, D.W.; Cole, R.H. Dielectric Relaxation in Glycerine. *J. Chem. Phys.* **1950**, *18*, 1417. [[CrossRef](#)]
45. Davidson, D.W.; Cole, R.H. Dielectric Relaxation in Glycerol, Propylene Glycol, and N-Propanol. *J. Chem. Phys.* **1951**, *19*, 1484–1490. [[CrossRef](#)]
46. Havriliak, S.; Negami, S. A Complex Plane Representation of Dielectric and Mechanical Relaxation Processes in Some Polymers. *Polymer* **1967**, *8*, 161–210. [[CrossRef](#)]
47. Moheimani, N.R. Inorganic Carbon and PH Effect on Growth and Lipid Productivity of *Tetraselmis Suecica* and *Chlorella Sp* (Chlorophyta) Grown Outdoors in Bag Photobioreactors. *J. Appl. Phycol.* **2013**, *25*, 387–398. [[CrossRef](#)]
48. Perez-Lopez, P.; Gonzalez-Garcia, S.; Ulloa, R.G.; Sineiro, J.; Feijoo, G.; Moreira, M.T. Life Cycle Assessment of the Production of Bioactive Compounds from *Tetraselmis Suecica* at Pilot Scale. *J. Clean. Prod.* **2014**, *64*, 323–331. [[CrossRef](#)]
49. Griffiths, M.J.; Garcin, C.; van Hille, R.P.; Harrison, S.T.L. Interference by Pigment in the Estimation of Microalgal Biomass Concentration by Optical Density. *J. Microbiol. Methods* **2011**, *85*, 119–123. [[CrossRef](#)] [[PubMed](#)]
50. Buchner, R.; Barthel, J.; Stauber, J. The Dielectric Relaxation of Water between 0 °C and 35 °C. *Chem. Phys. Lett.* **1999**, *306*, 57–63. [[CrossRef](#)]
51. Napijalo, M.L.; Nikolić, Z.; Dojčilović, J.; Napijalo, M.M.; Novaković, L. Temperature Dependence of Electric Permittivity of Linear Dielectrics with Ionic and Polar Covalent Bonds. *J. Phys. Chem. Solids* **1998**, *59*, 1255–1258. [[CrossRef](#)]
52. Bidigare, R.R.; Ondrusek, M.E.; Morrow, J.H.; Kiefer, D.A. In-Vivo Absorption Properties of Algal Pigments. *Proc. SPIE* **1990**, *1302*, 290–303. [[CrossRef](#)]
53. Lichtenthaler, H.K. Chlorophylls and Carotenoids: Pigments of Photosynthetic Biomembranes. *Methods Enzymol.* **1987**, *148*, 350–382.
54. Song, Y.; Li, M.; Yang, J.; Wang, J.; Pan, X.; Sun, Y.; Li, D. Capacitive Detection of Living Microalgae in a Microfluidic Chip. *Sens. Actuators B Chem.* **2014**, *194*, 164–172. [[CrossRef](#)]
55. Blanch, S.; Aguasca, A. Seawater Dielectric Permittivity Model from Measurements at L Band. *Proc. IEEE Int.* **2004**, *2*, 1362–1365.
56. Nörtemann, K.; Hilland, J.; Kaatze, U. Dielectric Properties of Aqueous NaCl Solutions at Microwave Frequencies. *J. Phys. Chem. A* **1997**, *101*, 6864–6869. [[CrossRef](#)]

