



LJMU Research Online

Stevenson, TJ, Visser, ME, Arnold, W, Barrett, P, Biello, S, Dawson, A, Denlinger, DL, Dominoni, D, Ebling, FJ, Elton, S, Evans, N, Ferguson, HM, Foster, RG, Hau, M, Haydon, DT, Hazlerigg, DG, Heideman, P, Hopcraft, JGC, Jonsson, NN, Kronfeld-Schor, N, Kumar, V, Lincoln, GA, MacLeod, R, Martin, SAM, Martinez-Bakker, M, Nelson, RJ, Reed, T, Robinson, JE, Rock, D, Schwartz, WJ, Steffan-Dewenter, I, Tauber, E, Thackeray, SJ, Umstatter, C, Yoshimura, T and Helm, B

Disrupted seasonal biology impacts health, food security and ecosystems.

<http://researchonline.ljmu.ac.uk/id/eprint/10712/>

Article

Citation (please note it is advisable to refer to the publisher's version if you intend to cite from this work)

Stevenson, TJ, Visser, ME, Arnold, W, Barrett, P, Biello, S, Dawson, A, Denlinger, DL, Dominoni, D, Ebling, FJ, Elton, S, Evans, N, Ferguson, HM, Foster, RG, Hau, M, Haydon, DT, Hazlerigg, DG, Heideman, P, Hopcraft, JGC, Jonsson, NN, Kronfeld-Schor, N, Kumar, V, Lincoln, GA, MacLeod, R, Martin.

LJMU has developed **LJMU Research Online** for users to access the research output of the University more effectively. Copyright © and Moral Rights for the papers on this site are retained by the individual authors and/or other copyright owners. Users may download and/or print one copy of any article(s) in LJMU Research Online to facilitate their private study or for non-commercial research. You may not engage in further distribution of the material or use it for any profit-making activities or any commercial gain.

The version presented here may differ from the published version or from the version of the record. Please see the repository URL above for details on accessing the published version and note that access may require a subscription.

<http://researchonline.ljmu.ac.uk/>

For more information please contact researchonline@ljmu.ac.uk

<http://researchonline.ljmu.ac.uk/>

Review



Cite this article: Stevenson TJ *et al.* 2015 Disrupted seasonal biology impacts health, food security and ecosystems. *Proc. R. Soc. B* **282**: 20151453. <http://dx.doi.org/10.1098/rspb.2015.1453>

Received: 15 June 2015
Accepted: 15 September 2015

Subject Areas:

health and disease and epidemiology, ecology, environmental science

Keywords:

annual, fitness, desynchrony, one-health, biological rhythm, circannual

Author for correspondence:

T. J. Stevenson
e-mail: tyler.stevenson@abdn.ac.uk

Electronic supplementary material is available at <http://dx.doi.org/10.1098/rspb.2015.1453> or via <http://rspb.royalsocietypublishing.org>.

Disrupted seasonal biology impacts health, food security and ecosystems

T. J. Stevenson¹, M. E. Visser², W. Arnold³, P. Barrett⁴, S. Biello⁵, A. Dawson⁶, D. L. Denlinger⁷, D. Dominoni⁸, F. J. Ebling⁹, S. Elton¹⁰, N. Evans⁸, H. M. Ferguson⁸, R. G. Foster¹¹, M. Hau¹², D. T. Haydon⁸, D. G. Hazlerigg¹³, P. Heideman¹⁴, J. G. C. Hopcraft⁸, N. N. Jonsson⁸, N. Kronfeld-Schor¹⁵, V. Kumar¹⁶, G. A. Lincoln¹⁷, R. MacLeod⁸, S. A. M. Martin², M. Martinez-Bakker¹⁸, R. J. Nelson¹⁹, T. Reed²⁰, J. E. Robinson⁸, D. Rock²¹, W. J. Schwartz²², I. Steffan-Dewenter²³, E. Tauber²⁴, S. J. Thackeray⁸, C. Umstatter²⁵, T. Yoshimura²⁶ and B. Helm⁸

- ¹Institute for Biological and Environmental Sciences, University of Aberdeen, Aberdeen, UK
- ²Department of Animal Ecology, Nederlands Instituut voor Ecologie, Wageningen, The Netherlands
- ³Research Institute of Wildlife Ecology, University of Vienna, Vienna, Austria
- ⁴Rowett Institute of Nutrition and Health, University of Aberdeen, Aberdeen, UK
- ⁵School of Psychology, University of Glasgow, Glasgow, UK
- ⁶Centre for Ecology and Hydrology, Penicuik, Midlothian, UK
- ⁷Department of Entomology, Ohio State University, Columbus, OH, USA
- ⁸Centre for Ecology & Hydrology, Lancaster Environment Centre, Library Avenue, Bailrigg, Lancaster, UK
- ⁹School of Life Sciences, University of Nottingham, Nottingham, UK
- ¹⁰Department of Anthropology, Durham University, Durham, UK
- ¹¹Nuffield Department of Clinical Neurosciences, University of Oxford, Oxford, UK
- ¹²Max Planck Institute for Ornithology, Seewiesen, Germany
- ¹³Department of Arctic and Marine Biology, University of Tromsø, Tromsø, Norway
- ¹⁴Department of Biology, The College of William and Mary, Williamsburg, VA, USA
- ¹⁵Department of Zoology, Tel Aviv University, Tel Aviv, Israel
- ¹⁶Department of Zoology, University of Delhi, Delhi, India
- ¹⁷School of Biomedical Sciences, University of Edinburgh, Edinburgh, UK
- ¹⁸Department of Ecology and Evolution, University of Michigan, Ann Arbor, MI, USA
- ¹⁹Department of Psychology, Ohio State University, Columbus, OH, USA
- ²⁰Aquaculture and Fisheries Development Centre, University of College Cork, Cork, Ireland
- ²¹School of Psychiatry and Clinical Neurosciences, University of Western Australia, Perth, Australia
- ²²Department of Neurology, University of Massachusetts Medical School, Worcester, MA, USA
- ²³Department of Animal Ecology and Tropical Biology, University of Wuerzburg, Wuerzburg, Germany
- ²⁴Department of Genetics, University of Leicester, Leicester, UK
- ²⁵Agroscope, Tanikon, CH-8356 Ettenhausen, Switzerland
- ²⁶Department of Applied Molecular Biosciences, University of Nagoya, Nagoya, Japan

id WA, 0000-0001-6785-5685; AD, 0000-0001-6492-872X; FJE, 0000-0002-7316-9582; NE, 0000-0001-7395-3222; VK, 0000-0003-1381-820X; MM-B, 0000-0002-9248-9450; RJN, 0000-0002-8194-4016; TR, 0000-0002-2993-0477; JER, 0000-0002-4632-1366; ET, 0000-0003-4018-6535; BH, 0000-0002-6648-1463

The rhythm of life on earth is shaped by seasonal changes in the environment. Plants and animals show profound annual cycles in physiology, health, morphology, behaviour and demography in response to environmental cues. Seasonal biology impacts ecosystems and agriculture, with consequences for humans and biodiversity. Human populations show robust annual rhythms in health and well-being, and the birth month can have lasting effects that persist throughout life. This review emphasizes the need for a better understanding of seasonal biology against the backdrop of its rapidly progressing disruption through climate change, human lifestyles and other anthropogenic impact. Climate change is modifying annual rhythms to which numerous organisms have adapted, with potential consequences for industries relating

to health, ecosystems and food security. Disconcertingly, human lifestyles under artificial conditions of eternal summer provide the most extreme example for disconnect from natural seasons, making humans vulnerable to increased morbidity and mortality. In this review, we introduce scenarios of seasonal disruption, highlight key aspects of seasonal biology and summarize from biomedical, anthropological, veterinary, agricultural and environmental perspectives the recent evidence for seasonal desynchronization between environmental factors and internal rhythms. Because annual rhythms are pervasive across biological systems, they provide a common framework for transdisciplinary research.

1. Introduction

Biological rhythms are ubiquitous in nature and occur on several temporal scales. Daily rhythms are important for the coordination of physiological, immunological and behavioural processes within organisms as well as for biotic interactions. The proper functioning of these rhythms is disrupted by modern human lifestyles—including sleep deprivation, light at night, jet lag and shift work [1,2], which induce temporal mismatches between the environment and circadian biology, and have detrimental effects on health and well-being. Problems of mismatch extend beyond daily rhythmicity. New research by Dopico *et al.* [3] has elegantly demonstrated massive seasonal changes in human immunity and physiology, adding to evidence for marked annual rhythms in the vast majority of organisms [4,5]. The disruption of annual rhythms under global climate change has potentially dramatic consequences for the health of animals, humans and ecosystems. Whether or not organisms can adapt to changing seasonality depends on the regulation of their annual rhythms. Principally, annual rhythms could be: (i) *genetically programmed*, i.e. genotype-dependent responses to the environment resulting from evolutionary adaptation to predictable annual change; (ii) *direct environmental* effects, e.g. accelerated growth owing to longer light hours in the day; or (iii) *coincidental*, e.g. human rhythms arising as a consequence from holidays.

This review will focus on genetically programmed, internal cell- and tissue-based mechanisms, which are predicted to track changes in environmental seasonality. In many species, tissue function is reprogrammed between subjective winter and summer states, generating endogenous rhythms that approximate a year (i.e. circannual rhythms) [3,6–9]. The existence of innate circannual rhythmicity has been demonstrated when organisms, from unicells to vertebrates, are maintained in constant environmental conditions for many years [6–11]. Species with genetically programmed annual rhythmicity occur globally, from high latitudes to the equator, and even in apparently ‘constant’ environments such as the deep sea [6]. Genetic programming is seen to be adaptive because it is *pre-emptive* and serves to predict and prepare organisms for alternations in seasonal environmental conditions [12–14].

In humans, the evidence in support of seasonal effects on disease risk, physiology and immune function is pervasive ([3,15–17]; electronic supplementary material, tables S1 and S2) and suggests present-day implications of evolutionarily inherited and refined mechanisms [5]. During the twentieth century, our species has developed technologies that allow precise

photic and climate control over our living environments, and humans in developed societies now spend the vast majority of their lives in conditions that mimic ‘summer-like’ environments [15]. These so-called *eternal summers* are characterized by light and temperature conditions that lack seasonal rhythmicity. Presently, many of us no longer live in accordance with the naturally occurring variation in geophysical rhythms. The consequences of such modified environmental seasonality on human health are still being elucidated.

Additionally, human activities are also affecting seasonality in a wider ecological context, with implications for disease risk, ecosystem health and food security. In agricultural and natural ecosystems, there is growing evidence that seasonal patterns and ecological interactions are disrupted by global climate change [18]. Disruptions in annual rhythms are expected to become progressively more prevalent and detrimental consequences have already been documented [19,20]. Nevertheless, there is a surprising lack of data to determine if, and how seasonally generated and regulated functions can adapt [21,22] to altered environmental conditions. Thus, an overarching, integrated scientific understanding is needed of the mechanisms that underlie seasonality, including cyclical biology of humans and of the consequences for all organisms as they adapt to disrupted seasonality and a fast changing climate. Addressing the arising practical challenges requires an integrated, cross-disciplinary approach, as exemplified by the ‘one health’ initiative for advancing healthcare for humans, animals and the environment [23,24].

Here, we review current examples of disruption between seasonal environmental conditions and internal timing mechanisms. From this basis, we further emphasize the pervasiveness of seasonality (with a focus on humans). Finally, we outline potential threats of disruption for humans, industry, and managed and natural ecosystems, with a call for the development of a synergistic research agenda for seasonal biology.

2. Scenarios of seasonal disruption

Seasonal changes in environmental variables play a significant role in the regulation of many physiological and behavioural processes. Annual changes in day length, temperature and rainfall can all act as cues; they provide vital information used in the timing of seasonal behaviour and the synchronization of internal rhythms (electronic supplementary material, figure S1 and figure 1). In this way, organisms’ behaviour and physiology is timed to optimize fitness in a given season [12,13,19]. However, the use of these cues to synchronize (entrain) biological rhythms is effective only to the extent that temporal relationships between the external and internal rhythms are predictable. Timing systems are therefore highly vulnerable to changes in the constellation of environmental factors under which they have evolved (figure 1). Changes in the seasonal timing of organismal functions provided some of the earliest evidence for biological effects of global climate change [25]. Such changes have now been documented across a wide range of habitat types and taxonomic groups (electronic supplementary material, figure S2 and [26]). Crucially, species and populations of wild plants and animals have demonstrated different rates of change in their overt seasonality [26].

There are multiple, mutually non-exclusive and potentially interactive mechanisms by which altered external cues could disrupt the relationship between external and internal

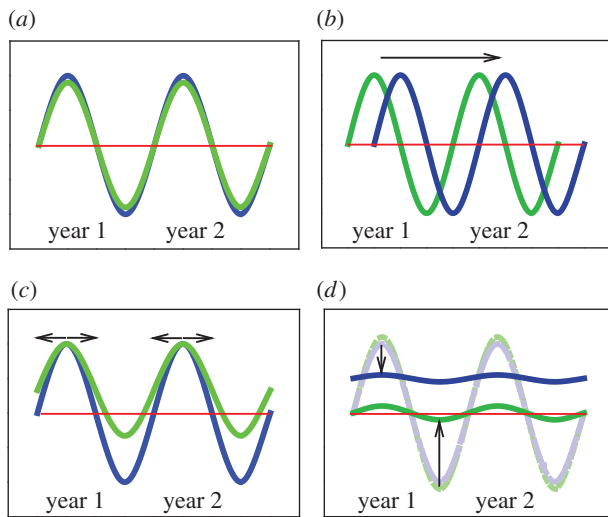


Figure 1. Schematic of annual rhythms. (a) All organisms on earth have evolved to time their physiology and behaviour (internal rhythm; blue) with seasonal changes in local climates/resources (external rhythm; green line). These internal rhythms can precede or follow those of resources, but for adaptive timing, the internal and external rhythms need to match. There are three theoretical scenarios that can account for disruptions of the match between seasonal timing to local climates: (b) phase shifts between internal and external rhythms; (c) increased (or decreased) duration of favourable environmental conditions (e.g. rising above the red line, which could indicate a rise in minimum temperature and day length); or (d) reduction of the amplitude (e.g. under 'eternal summers') and/or change in mean levels of seasonal rhythms. Red lines indicate the average seasonal mean of the rhythms in panel (a) for reference. Arrows indicate changes in rhythms. (Online version in colour.)

rhythmicity. For example, climate-change-induced shifts in the timing of the seasons can result in an abnormally delayed or advanced internal rhythm with respect to the environment (figure 1*b*). Such mismatches in the timing of critical life-history events can have a large impact on the reproductive output of plants and animals. Alternatively, disruptions might be induced if the durations of specific phases of an external rhythm become extended (e.g. longer growing season) or reduced (e.g. shorter time of snow cover). This could occur, for example, if local minimal winter temperatures increase, resulting in higher means in local annual temperatures with reduced amplitude of seasonal differences (figure 1*c*). A scenario with changes in the amplitude of seasonal differences is particularly relevant for humans (figure 1*d*). Cultural developments, including the ability to control local environmental conditions through the use of fire at night for heat and light, marked the beginning of human manipulation of natural day–night cycles. The seasonality experienced by humans in developed societies (and that of some closely associated species) is already largely damped by modern artificially induced photic and indoor climate conditions reminiscent of eternal summers [15].

3. Molecular, cellular and physiological basis of seasonal time-keeping

A better understanding of how species respond to seasonal changes in their environment and how they can adapt to their disrupted seasonality requires knowledge of the mechanisms of seasonal time-keeping. Endogenous annual rhythmicity is

evident in a wide range of species (e.g. protists [6], insects [27], plants [28], fishes [29], birds [30] and mammals [4]), but is especially strong and widespread among vertebrates, making it highly likely that seasonal genes and/or intracellular pathways are also involved in long-term changes in human physiology and behaviour. Broadly, in multicellular organisms, the mechanisms for regulating annual rhythms involve cellular and molecular timers that interact closely with refined input pathways for transmitting day length (photoperiod) and other environmental cues (electronic supplementary material, figure S3). Highly photoperiodic species have been extremely valuable for the identification of key genetic, cellular and neuronal circuits that regulate annual rhythms [31]. Direct evidence for endogenous seasonal rhythms in humans is scarce owing to the challenges of collecting data over multiple annual oscillations and the near impossibility of isolating subjects from exogenous influences for extensive time periods. Historical and contemporary studies have demonstrated that humans exhibit seasonal reproduction, hypothesized to be driven by internal mechanisms [32,33]. Over the past few centuries, there has been a decrease in seasonal patterns in humans [32,33] that could have resulted from a reduction in the seasonal amplitude or desynchronization from environmental cues. Nevertheless, these data suggest that exogenous cues (i.e. photoperiod) can entrain seasonal human responses [15,33,34]. In most mammals, annual changes in day length affect seasonal rhythmicity via the suprachiasmatic nucleus in the hypothalamus, and consequently, altering the nocturnal secretion of the hormone melatonin from the pineal gland ([35]; electronic supplementary material, figure S3*a*). Melatonin receptors are localized in many of the brain regions implicated in cognitive, affective and homeostatic processes, and thus seasonal changes in melatonin secretion regulate key genes required for the neuroendocrine control of physiology, immune function and behaviour [36–40]. Although exact photoperiodic input pathways vary among vertebrate groups, similar day length-induced changes in neuroendocrine brain regions (electronic supplementary material, figure S3*b*) occur in fishes [41] and birds [42], which would suggest that seasonal changes in day length act to regulate a common, evolutionarily ancient internal timing system [43]. Recent work suggests that the fundamental nature of this timer may depend on cyclical histogenesis [44] and/or epigenetic mechanisms [45,46], potentially operating in multiple tissues to form a circannual clock-network.

In this framework, the hypothalamus of the brain acts as an important interface for many processes that are relevant for health and physiology, coordinating seasonal changes in autonomic and endocrine function. Of note, seasonal timing in immune function is vital for the survival of many small seasonal animals such as rodents and birds [39–41]. Seasonal- or light-induced changes in a range of innate humoral and cell-mediated systems are present in a wide range of species (electronic supplementary material, table S2). A general finding is that short days which mimic a winter environment enhance some immune functions [39]; for species where winter is a time of increased pathological risk, immune function is increased presumably in anticipation of increased need. It is important to note that different aspects of immunity may be differently regulated across the seasons. For example, rodent and bird models have shown that short days enhance many aspects of cell-mediated immunity while suppressing other specific immune defences ([39,41,47]; electronic supplementary material, table S2). The precise molecular and cellular

mechanisms involved in the seasonal restructuring of immune function are not well described, but recent evidence suggests that a common molecular switch occurs in hypothalamic regions and immune tissues (e.g. leucocytes; [3,48]). Recent developments in next-generation sequencing platforms, transcriptomics and proteomic analyses, provide a powerful means to identify the precise molecular and cellular pathways that underlie annual rhythms [3,44,46]. Once the mechanisms that govern such rhythms are identified, experiments can be devised for field-based or clinical settings to examine the relationship between external environment and internal timing.

4. Seasonality and human health

In many tropical and equatorial areas, including the savannah–woodlands where humans are thought to have originated, seasonality is highly pronounced although there is little variation in day length. Indeed, striking seasonal patterns in behaviour are observed in the migration and breeding rhythms of many equatorial species, such as the flowering of trees [49] and the reproductive seasonality of some primates and traditional human societies [50]. Although at a *population* level many species appear to breed asynchronously with respect to the calendar year, *individuals* tend to be seasonally cyclical [51,52] when studied over a full life history. Environmental stimuli that provide seasonal cues in the tropics are often related to local non-photic cues, such as rainfall patterns that in turn determine food abundance (electronic supplementary material, figure S1c). In the Pleistocene, humans radiated out of the tropics to higher latitudes where they encountered novel seasonal environments, in particular marked annual rhythms in day length and ambient temperature (electronic supplementary material, figure S1a–c). However, because the underlying internal mechanisms that govern annual rhythms preceded the hominin lineage, humans probably possess much of the ancient molecular and cellular machinery characteristics of other seasonal species, potentially including genetic variation in seasonality [53]. Even today, human reproduction is not evenly spread across the year ([33,54]; electronic supplementary material, figure S4a–c). For example, a recent analysis indicated that human birth pulses across the USA fluctuate seasonally with an amplitude of about 10% ([33]; electronic supplementary material, figure S4). Despite the decline in birth seasonality (figure 1d; cf. [15,17,32,33]), it is still substantial for a species that effectively lives under conditions of eternal summer in its immediate habitat. Notably, the amplitude of these rhythms and the timing of their maxima vary with latitude, which strongly suggests an underlying physiological regulatory mechanism. These patterns of birth pulses have longer-term relevance because of the strong evidence [55] that birth month has life-long impacts on health, including the likelihood of general, psychiatric or neurological illnesses ([17,54]; electronic supplementary material, table S1). That these time-of-birth effects may reflect day-length-dependent mechanisms is signified by the observation that some diagnoses, e.g. schizophrenia and multiple sclerosis, show an inverse pattern in the Northern and Southern Hemispheres (electronic supplementary material, table S1).

Seasonal human morbidity is observed in non-infectious diseases, including heart disease [56], cerebrovascular disease [57] and lung cancer [58]. Behaviour-driven mortality is also seasonal; cycles in the monthly numbers of suicides are

one of the oldest and most replicated findings, with most, but not all, studies finding a peak in late spring/early summer (figure 2a). Interestingly, aggression and other violent acts such as homicide have a marked seasonal pattern of occurrence nearly coincident with that found for suicide (figure 2b). Seasonal patterns in aggression are not limited to the individual level. Historical records indicate a strong rhythm in population-level forms of aggression measured in onset of battles ([59]; figure 2c,d). Whether rhythms represent simple direct responses to seasonal environmental changes and/or the manifestation of endogenous seasonal timing mechanisms, these findings indicate that seasonality continues to be an important factor in human lives.

Humans also show seasonal changes in immunity and in the occurrence of infectious diseases [47]. Changes in immunity include seasonal variation in cytokine production [60], bacterial killing activity [61] and response to vaccination [62]. The most comprehensive characterization so far of annual cycles in human immunity comes from a recent study by Dopico *et al.* [3]. This study presented extensive data from geographically and ethnically diverse human populations, including mRNA expression in white blood cells and adipose tissue, inflammatory markers and blood count data. It reports seasonal differences in the expression of up to 23% of genes in peripheral blood mononuclear cells. Furthermore, the seasonal patterns of gene expression were inverse in Australia relative to the USA and the UK. The reverse pattern in Australia supports the idea that in humans, as well as in other animals, some immune responses may be modulated by day length [63]. Seasonal infections thus probably mirror internal rhythms of immunity as well as patterns of exposure. The relative importance of these mechanisms as drivers of any human infection remains to be established.

5. Disrupted seasonality and infectious disease dynamics

One important area for future research is the effect of disrupted seasonality on the dynamics of infectious disease. A recent review has highlighted the unprecedented rate at which vector-borne diseases have changed over the past decade, and has alerted a wide audience to the impact of changes in the climate [64]. The review details consequences of modified environmental seasonality, for example release from severe winters at higher latitudes and extended phases of seasonal activity. Environmental seasonal drivers of disease incidence include climate-sensitive pathogen dissemination and survival; seasonal variation in host recruitment, contact rates and susceptibility, and seasonal changes in vector abundance [65,66]. Directly transmitted and epidemic-prone diseases such as influenza, measles, polio, rotavirus and cholera exhibit pronounced seasonality and substantial heterogeneity in time and space [65,66]. The dominant seasonal drivers vary not only by disease, but also by geography. The best understood examples of climate-driven infections are influenza and cholera. Influenza is best transmitted when temperature and humidity are low, yielding winter epidemics in temperate regions [67], whereas cholera outbreaks are intensified by local increases in temperature during El Niño events [68].

Vector-borne pathogens—including those responsible for malaria, dengue, Lyme disease, Chagas, West Nile and sleeping sickness—present some of the most notable examples of

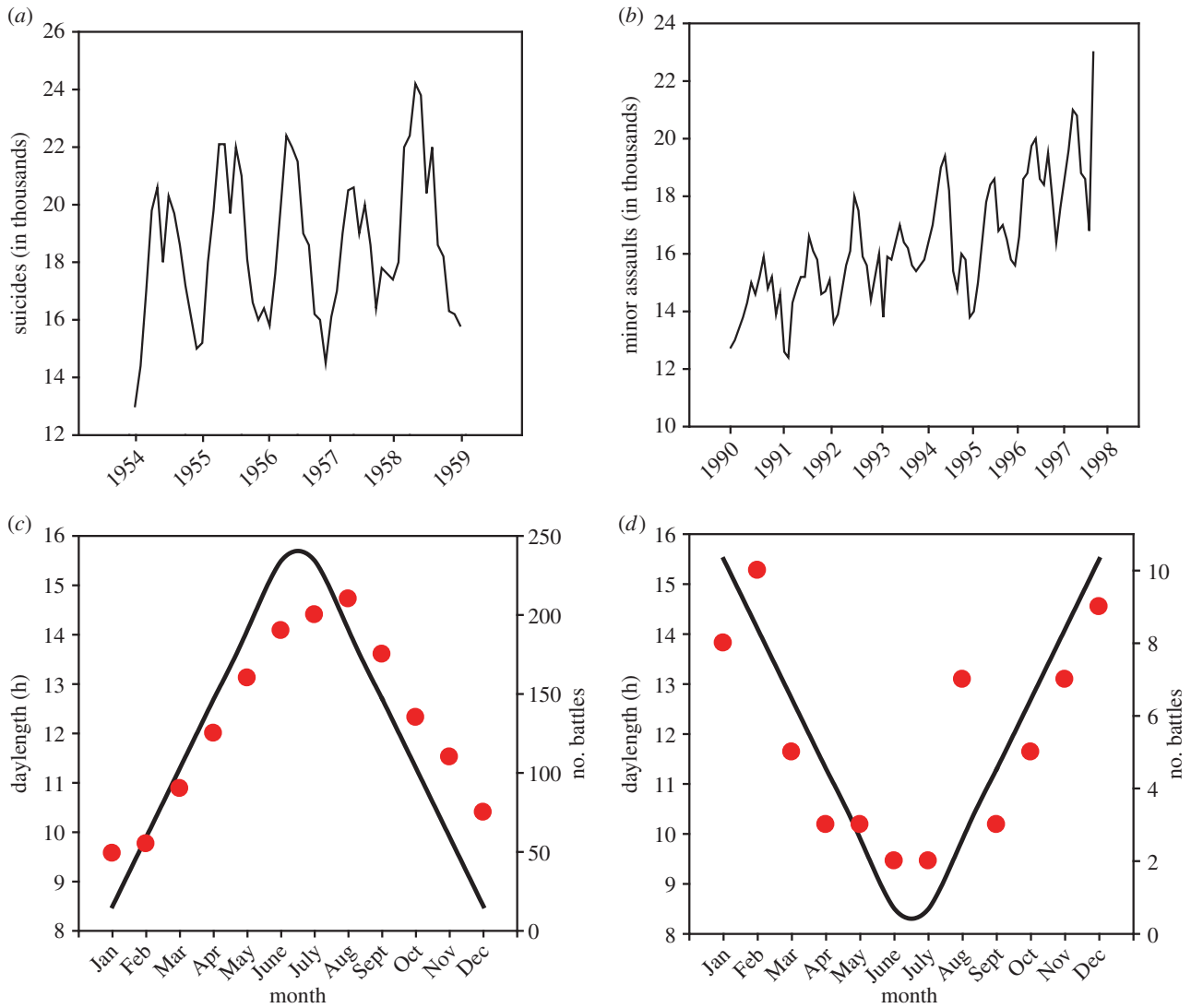


Figure 2. Seasonal patterns in humans. (a) Number of suicides in Japan was significantly greater in the spring compared with autumn seasons. (b) The number of minor assaults in England and Wales significantly increased during the summer compared with winter seasons. (c) Number of battles in the Northern hemisphere peaked in August and were at a minimum in January; (d) the inverse pattern occurs in the Southern Hemisphere with peaks of battles occurring December–February; troughs in July. Data from (a,b) were kindly provided by Daniel Rock; (c,d) adapted from [59]. (Online version in colour.)

seasonally driven infection [65,66]. Vector-borne diseases are particularly sensitive to phenological change, because numerous aspects of vector behaviour, demography and population dynamics are crucially dependent on environmental conditions [69]. For example, the growth rate of malaria vector populations in Africa explodes during the rainy seasons owing to the expansion of vector-larval habitat [70,71]. Temperature also has a strong impact on larval development rate, survival and the duration of the gonotrophic cycle in a wide range of Diptera [72–75]. Further complexity is introduced by seasonality in host populations. Examples include seasonal variation in the immune responsiveness and nutritional quality of plant hosts to their vectors [72,75]; herd immunity in cattle to tick-borne *Babesia* [76] and demonstration that the timing of peak human exposure to West Nile virus in North America is driven by seasonal patterns of avian migration [77]. The complexity of the seasonal interactions between vectors, pathogens and hosts is probably responsible for the lack of consistent evidence on how climate change will influence vector-borne disease [64,71,74]. While there is compelling evidence that some vector-borne diseases are being enhanced by climate change (e.g. Lyme disease; [78,79]; avian malaria; [80]), there are several other examples of diseases that have failed to

expand as originally predicted (e.g. malaria; [69]). The least understood seasonal drivers of infection are those potentially governed by rhythms of host susceptibility and susceptible recruitment [47], although recent data suggest that annual cycles in human immune pathways may indeed affect susceptibility to specific diseases [3]. In summary, there is a need for a detailed understanding of how climate will affect all aspects of the pathogen life cycle before the consequences for transmission can be predicted.

6. Disrupted seasonality and ecosystem health

Ecological studies have identified potential problems associated with disruption of seasonality, owing to the desynchronization of key seasonal interactions among wild species (figure 1b). However, our existing understanding of the ecological implications of disrupted seasonality is mostly based upon studies of impacts upon single predator–prey relationships (such as the mismatch that can develop between the timing of seasonal coat colours and the annual duration of snow cover [81] and more recently also on plant–pollinator interactions [82–86]). Importantly, reproductive success in

many species increases when reproductive timing and peak food availability are matched. Examples include egg hatching date in piscivorous seabirds, such as the Atlantic puffin (*Fratercula arctica*) [87], and in winter moths (*Operophtera brumata*) relative to tree budburst [88]; or calving date relative to vegetation growth in caribou (*Rangifer tarandus*) [89] or roe deer (*Capreolus capreolus*; [90]). An example that has been developed in some detail is the reducing match between the timing of breeding of forest songbirds, such as great tits (*Parus major*) and blue tits (*Parus caeruleus*), and the time that their prey, caterpillars feeding on oak leaves, are most abundant ([19,91–93]; electronic supplementary material, figure S5). Great tits that are most mismatched with the food peak have the fewest surviving offspring [94–96]. These ecological studies provide clear examples of how disrupted seasonality can affect the fitness of individuals living in an environment in which internal and external rhythms no longer match. The studies give numerous insights into how disrupted seasonality might also affect human and agricultural health.

Disrupted seasonality in natural systems can also be expected to affect ecosystem health. However, the effects at the ecosystem scale are more poorly understood than those at the individual level, because most studies have adopted the paradigm of the food chain (e.g. a single consumer population and a single resource species). While this has rendered the problem more tractable, patterns of species interaction in nature are in fact complex networks. Therefore, a major challenge is to move beyond relatively simple, mostly pairwise ecological interactions to consider the consequences of disrupted seasonality on population and community dynamics within broader, multispecies, interaction networks that include humans.

Despite the limitations of studies on dyadic interactions, there are already some clues that disrupted seasonality may affect ecosystem health. Under global change, the flowering phenology of plants and the seasonal activity phase of pollinators may shift to a different extent or even in opposing directions (electronic supplementary material, figure S2), thereby potentially leading to temporal mismatches and the disruption of existing interactions [97–99]. However, recent studies based on long-term phenology data indicate that bee emergence keeps pace with advanced plant-flowering, at least under current climatic conditions and for generalist plant–pollinator interactions [100]. Importantly, species-rich pollinator communities may also be able to buffer negative consequences of global warming [101], because plant pollinator networks exhibit plasticity with lost interactions being capable of replacement by new ones [102]. This underpins the importance of sustaining biodiversity for mitigating the impact of global climate change. Clearly, while there is ample scope for disrupted seasonality to strongly affect ecosystems, the few existing examples suggest that at present the sum impacts appear relatively small. In vertebrates, genetic variation in seasonality in wild populations of mammals and birds may not be sufficient to track changes in climate [103,104]. It remains to be seen if our collective perspective will hold once long-term research has been conducted as global climate change continues.

7. Disrupted seasonality and agricultural health

Ecological, physiological and epidemiological considerations suggest that seasonal disruption could also lead to substantial

problems in agricultural industries, impacting both crop production and livestock viability, and hence, food security. The two most prevalent drivers of altered crop yields are changes in pollination and pest infestation. Notably, 70% of major crops and 35% of global crop production volume [82], with an estimated global economic value of \$189 billion (€153 billion) per year [105], depend on seasonal pollination by bees and other insects. The spread of pest insects is a significant threat to human food security. For example, aphid outbreaks are expected to intensify owing to extended growing seasons (figure 1c) permitted by altered seasonal environmental conditions (reviewed by Bale & Hayward [106]). The peach-potato aphid and the grain aphid are examples of vectors of devastating plant virus diseases. In the past 20 years, increased occurrences of mild winters have resulted in earlier spring migrations of the winged form of these aphids into crops during their most vulnerable stages, resulting in epidemic outbreaks. The complex interactions between crops, pests and pathogens in the context of climate change urgently need more research [107].

Neglect of seasonal physiology and of the consequences of its disruption, negatively impact livestock health. Agricultural industries, notably the poultry industry, diminish seasonality by choosing light and temperature conditions to maximize reproduction and growth and thus profitability on an industrial scale (figure 1d). Some livestock, especially hens (*Gallus gallus*), may therefore be instructive models of longer-time effects of aseasonal conditions. Without the opportunity to seasonally pause laying and regenerate, notably by moulting [108], these hens become morbid and are typically slaughtered; only by allowing or forcing a moult can these effects be reversed. In other species used for human food production, breeding practices that select for animals which are capable of year round reproduction have also reduced seasonal rhythms. Farmed cattle (*Bos primigenius taurus*) have the ability to reproduce year round, but despite selection for decreased seasonal physiology, some ancient patterns remain, including the expression of poorly understood genes relating to hibernation and seasonal biology [109]. Many sheep breeds (*Ovis aries*) are excellent models for seasonal reproduction (electronic supplementary material, figure S6a) because they exhibit marked seasonal changes that are driven by internal rhythms synchronized by environmental factors [4]. Similar to the seasonal variation in humans discussed above, both sheep and cattle exhibit seasonal changes in disease diagnoses (electronic supplementary material, figure S6b).

To exemplify the possible implications of seasonal biology for morbidity and management of livestock, we highlight provisional data from passive surveillance in the UK on nutritional diseases (electronic supplementary material, figure S6b). Selenium (Se)-related deficiencies are common in farmed ruminants [110], so that sheep and cattle are commonly given supplementary Se. This perceived risk of deficiency and consequent timing of supplementation is driven by expected environmental supply and climatic- or management-driven challenge rather than by knowledge of underlying physiological processes that drive vulnerability. The contrasting peak months of diagnosis of Se deficiency syndromes in sheep versus cattle (electronic supplementary material, figure S6b) could be driven by different factors such as livestock management or disruptions in internal annual rhythms. Se deficiency is apparent in humans and is directly linked to viral pathology [111]. Seasonal variations in Se deficiency or supplementation

in agriculture could, therefore, have significant implications for livestock health and human food systems.

8. Concluding remarks

Although our appreciation of the critical role of seasonal biology in the health and welfare of organisms (including humans), natural ecosystems and industries is growing, our ignorance of the effects of seasonal disruption on these systems is profound. We call for the development of an integrated, interdisciplinary, seasonality-focused research agenda (electronic supplementary material, table S3), inspired by a one health approach [24]. We propose three primary aims: understanding the internal seasonal clock, studying seasonality in human and veterinary clinical settings, and gaining ecological network perspectives.

(a) Understanding the internal seasonal clock

The mechanistic basis of the seasonal clock, including its conserved and variable elements across vertebrates, remains largely unknown. This is in contrast to remarkable advances in our understanding of the circadian clock where the expanding knowledge of individual genetic variation is paving the way to personalized medicine [112]. Obtaining a similar level of detail about genes and physiological processes involved in the seasonal timing mechanisms and functional variation in these genes, would aid in identifying people, livestock and crops susceptible to the impact of seasonal disruption. This research should include genomic and transcriptomic investigation of seasonal biology across seasonal gradients in nature and also long-term studies of human and animal health. The current research focus on short-lived animal models offers limited answers for long-term health management of humans, relative to the value of incorporating studies of long-lived seasonal species. Beyond animal systems, manipulating plant clocks might also enable the development of crops (by either artificial selection or transgenic approaches) that are more resistant to temporal mismatches owing to climate change, preserving and possibly improving crop production systems.

(b) Human and veterinary clinical settings

Seasonal patterns in health and physiology can be powerful indicators of possible underlying pathways, e.g. the neuroendocrine regulation of metabolism and obesity [113]. Data from human and veterinary pathology are often

poorly integrated. Both are frequently only locally available, making it difficult to gain a broad understanding and to identify possible aetiologies. For example, revealing the seasonality of human diseases is now becoming possible as powerful epidemiological approaches are developed [33], but data often need to be tediously compiled from dispersed and poorly accessible sources. We encourage unified collection of seasonal health data, including possible use of big data analytics [114]. Analysis using improved empirical and epidemiological tools can help to identify drivers of seasonality (e.g. through trends in ambient temperature, latitude and day length) and also seasonal periods of particular vulnerability.

(c) Gaining ecological network perspectives

Because organisms are sensitive to changes in the rhythms of species with which they interact, consequential mismatches propagate across ecological networks. Most research focuses on pairwise predator–prey, plant–herbivore or plant–pollinator interactions, but pairwise interactions need to be scaled up to more complex food webs and host–vector–pathogen systems. We emphasize the value of longer-term monitoring in ecological studies, with a view of multiple components and ‘neighbours’ in the network of species of particular interest. There is a real need for large-scale experimental approaches to understand the ecosystem-level consequences of shifted or disrupted seasonal timing.

Overall, in our view: (i) understanding the internal seasonal clock, (ii) enhancing seasonal analyses in human and veterinary settings, and (iii) integrating data across ecological and agricultural networks, will enable an integrative platform for addressing seasonal disruptions in a rapidly changing world.

Ethics. This review did not use human/animals.

Data accessibility. The review does not contain new data; all work was obtained from previously published material.

Authors' contributions. All authors contributed to the conception and design of the review. T.J.S., M.E.V. and B.H. drafted the review. All authors analysed, critically revised and approved the version published.

Competing interests. We declare we have no competing interests.

Funding. We received no funding for this study.

Acknowledgements. This paper first originated during the Symposium and Workshop ‘Seasons of Life’ hosted by the University of Glasgow in November 2013. Additional funding was kindly provided by BBSRC and the British Society for Neuroendocrinology (BSN).

References

- Scheer FAJL, Hilton MF, Mantzoros CS, Shea SA. 2009 Adverse metabolic and cardiovascular consequences of circadian misalignment. *Proc. Natl Acad. Sci. USA* **106**, 4453–4458. (doi:10.1073/pnas.0808180106)
- Fonken LK, Workman JL, Walton JC, Weil ZM, Morris JS, Haim A, Nelson RJ. 2010 Light at night increases body mass by shifting the time of food intake. *Proc. Natl Acad. Sci. USA* **107**, 18 664–18 669. (doi:10.1073/pnas.1008734107)
- Dopico XC *et al.* 2015 Widespread seasonal gene expression reveals annual differences in human immunity and physiology. *Nat. Commun.* **6**, 7000. (doi:10.1038/ncomms8000)
- Lincoln GA, Clarke IJ, Hut RA, Hazlerigg DG. 2006 Characterizing a mammalian circannual pacemaker. *Science* **314**, 1941–1944. (doi:10.1126/science.1132009)
- Bradshaw WE, Holzapfel CM. 2007 Evolution of animal photoperiodism. *Annu. Rev. Ecol. Evol. Syst.* **38**, 1–25. (doi:10.1146/annurev.ecolsys.37.091305.110115)
- Andersen DM, Keafer BA. 1987 An endogenous annual clock in the toxic marine dinoflagellate (*Gonyaulax tamarensis*). *Nature* **325**, 616–617. (doi:10.1038/325616a0)
- Paul MJ, Zucker I, Schwartz WJ. 2008 Tracking the seasons: the internal calendars of vertebrates. *Phil. Trans. R. Soc. B* **363**, 341–361. (doi:10.1098/rstb.2007.2143)

8. Gwinner E. 1996 Circannual clocks in avian reproduction and migration. *Ibis* **138**, 47–63. (doi:10.1111/j.1474-919X.1996.tb04312.x)
9. Gwinner E. 1986 *Circannual rhythms*. Heidelberg, Berlin, Germany: Springer.
10. Gwinner E, Dittami J. 1990 Endogenous reproductive rhythms in a tropical bird. *Science* **249**, 906–908. (doi:10.1126/science.249.4971.906)
11. Kondo N, Sekijima T, Kondo J, Takamatsu N, Tohya K, Ohtsu T. 2006 Circannual control of hibernation by HP complex in the brain. *Cell* **125**, 161–172. (doi:10.1016/j.cell.2006.03.017)
12. Visser ME, Caro SP, van Oers K, Schaper SV, Helm B. 2010 Phenology, seasonal timing and circannual rhythms: towards a unified framework. *Phil. Trans. R. Soc. B* **365**, 3113–3127. (doi:10.1098/rstb.2010.0111)
13. Helm B, Ben-Shlomo R, Sherif MJ, Hut RA, Foster R, Barnes BM, Dominoni D. 2013 Annual rhythms that underlie phenology: biological time-keeping meets environmental change. *Proc. R. Soc. B* **280**, 20130016. (doi:10.1098/rspb.2013.0016)
14. Stevenson TJ, Ball GF. 2011 Information theory and the neuropeptidergic regulation of seasonal reproduction in mammals and birds. *Proc. R. Soc. B* **278**, 2477–2485. (doi:10.1098/rspb.2010.2181)
15. Wehr TA. 2001 Photoperiodism in humans and other primates: evidence and implications. *J. Biol. Rhythms* **16**, 348–364. (doi:10.1177/074873001129002060)
16. Wulff K, Gatti S, Wettstein JG, Foster RG. 2010 Sleep and circadian rhythm disruption in psychiatric and neurodegenerative disease. *Nat. Rev. Neurosci.* **11**, 589–599. (doi:10.1038/nrn2868)
17. Foster RG, Roenneberg T. 2008 Human responses to the geophysical daily, annual and lunar cycles. *Curr. Biol.* **18**, R784–R794. (doi:10.1016/j.cub.2008.07.003)
18. IPCC. In *Climate change 2014, Impacts, adaptation and vulnerability. Contribution of working group II to the fifth assessment report of the Intergovernmental panel on climate change*.
19. Visser ME. 2008 Keeping up with a warming world: assessing the rate of adaptation to climate change. *Proc. R. Soc. B* **275**, 649–659. (doi:10.1098/rspb.2007.0997)
20. Vedder O, Bouwhuis S, Sheldon BC. 2013 Quantitative assessment of the importance of phenotypic plasticity in adaptation to climate change in wild bird populations. *PLoS Biol.* **11**, 1–10. (doi:10.1371/journal.pbio.1001605)
21. Gienapp P, Teplitsky C, Alho JS, Mills JA, Merila J. 2008 Climate change and evolution: disentangling environmental and genetic responses. *Mol. Ecol.* **17**, 167–178. (doi:10.1111/j.1365-294X.2007.03413.x)
22. Visser ME, van Noordwijk AJ, Tinbergen JM. 1998 Warmer spring lead to mistimed reproduction in great tits (*Parus major*). *Proc. R. Soc. Lond. B* **265**, 1867–1870. (doi:10.1098/rspb.1998.0514)
23. Zinsstag J, Schelling E, Waltner-Toews D, Tanner M. 2011 From 'one medicine' to 'one health' and systemic approaches to health and well-being. *Prev. Vet. Med.* **101**, 148–156. (doi:10.1016/j.prevetmed.2010.07.003)
24. Coker R, Rushton J, Mounier-Jack S, Karimuribo E, Lutumba P, Kambage D, Pfeiffer DU, Stärk K, Rweyemamu M. 2011 Towards a conceptual framework to support One Health research for policy on emerging zoonoses. *Lancet Infect. Dis.* **11**, 326–331. (doi:10.1016/S1473-3099(10)70312-1)
25. Hughes L. 2000 Biological consequences of global warming: is the signal already apparent? *Trends Ecol. Evol.* **15**, 56–61. (doi:10.1016/S0169-5347(99)01764-4)
26. Thackeray SJ, et al. 2010 Trophic level asynchrony in rates of phenological change for marine, freshwater and terrestrial environments. *Glob. Change Biol.* **16**, 3304–3313. (doi:10.1111/j.1365-2486.2010.02165.x)
27. Miyazaki Y, Nisimura T, Numata H. 2006 Phase responses in the circannual rhythm of the varied carpet beetle, *Anthrenus verbasci*, under naturally changing day lengths. *Zool. Sci.* **23**, 1031–1037. (doi:10.2108/zsj.23.1031)
28. Song YH, Smith RW, To BJ, Millar AJ, Imaizumi T. 2012 FKF1 conveys timing information for CONSTANS stabilization in photoperiodic flowering. *Science* **336**, 1045–1049. (doi:10.1126/science.1219644)
29. Eriksson LO, Lundqvist H. 1982 Circannual rhythms and photoperiod regulation of growth and smolting in Baltic salmon (*Salmo salar* L). *Aquaculture* **28**, 113–121. (doi:10.1016/0044-8486(82)90014-X)
30. Helm B, Schwabl I, Gwinner E. 2009 Circannual basis of geographically distinct bird schedules. *J. Exp. Biol.* **212**, 1259–1269. (doi:10.1242/jeb.025411)
31. Yasuo S, Yoshimura T. 2009 Comparative analysis of the molecular basis of photoperiodic signal transduction in vertebrates. *Integr. Comp. Biol.* **49**, 507–518. (doi:10.1093/icb/icp011)
32. Roenneberg T, Aschoff J. 1990 Annual rhythm of human reproduction. I. Biology, sociology or both? *J. Biol. Rhythms* **5**, 195–216. (doi:10.1177/074873049000500303)
33. Martinez-Bakker M, Bakker KM, King AA, Rohani P. 2014 Human birth seasonality: latitudinal gradient and interplay with childhood disease dynamics. *Proc. R. Soc. B* **281**, 20132438. (doi:10.1098/rspb.2013.2438)
34. Roenneberg T, Aschoff J. 2014 Annual rhythm of human reproduction. II. Environmental correlations. *J. Biol. Rhythms* **5**, 217–239. (doi:10.1177/074873049000500304)
35. Wood S, Loudon A. 2014 Clocks for all seasons: unwinding the roles and mechanisms of circadian and interval timers in the hypothalamus and pituitary. *J. Endocrinol.* **222**, R39–R59. (doi:10.1530/JOE-14-0141)
36. Dardente H, Wyse CA, Birnie MJ, Dupré SM, Loudon ASI, Lincoln GA, Hazlerigg DG. 2010 A molecular switch for photoperiod responsiveness in mammals. *Curr. Biol.* **20**, 2193–2198. (doi:10.1016/j.cub.2010.10.048)
37. Ono H, Hoshino Y, Yasuo S, Watanabe M, Nakane Y, Murai A, Ebihara S, Korf H-W, Yoshimura T. 2008 Involvement of thyrotropin in photoperiodic signal transduction in mice. *Proc. Natl Acad. Sci. USA* **105**, 18 238–18 242. (doi:10.1073/pnas.0808952105)
38. Nelson RJ. 2004 Seasonal immune function and sickness responses. *Trends Immunol.* **25**, 187–192. (doi:10.1016/j.it.2004.02.001)
39. Nelson RJ, Demas GE, Klein SL, Kriegsfeld LJ. 1995 The influence of season, photoperiod, and pineal melatonin on immune function. *J. Pineal Res.* **19**, 149–165. (doi:10.1111/j.1600-079X.1995.tb00184.x)
40. Stevenson TJ, Prendergast BJ. 2014 Photoperiodic time measurement and seasonal immunological plasticity. *Front. Neuroendol.* **37**, 76–88. (doi:10.1016/j.yfrne.2014.10.002)
41. Nakane Y et al. 2013 The saccus vasculosus of fish is a sensor of seasonal changes in day length. *Nat. Commun.* **4**, 2108. (doi:10.1038/ncomms3108)
42. Nakao N et al. 2008 Thyrotrophin in the pars tuberalis triggers photoperiodic response. *Nature* **452**, 317–322. (doi:10.1038/nature06738)
43. O'Brien CS, Bourdo R, Bradshaw WE, Holzapfel CM, Cresko WA. 2012 Conservation of the photoperiodic neuroendocrine axis among vertebrates: evidence from the teleost fish, *Gasterosteus aculeatus*. *Gen. Comp. Endocrinol.* **178**, 19–27. (doi:10.1016/j.ygen.2012.03.010)
44. Hazlerigg DG, Lincoln GA. 2011 Hypothesis: cyclical histogenesis is the basis of circannual timing. *J. Biol. Rhythms* **26**, 471–485. (doi:10.1177/0748730411420812)
45. Stevenson TJ, Prendergast BJ. 2013 Reversible DNA methylation regulates seasonal photoperiodic time measurement. *Proc. Natl Acad. Sci. USA* **110**, 16 651–16 656. (doi:10.1073/pnas.1310643110)
46. Helm B, Stevenson T. 2015 Circannual rhythms: history, present challenges, future directions. In *Annual, lunar and tidal clocks: patterns and mechanisms of nature's enigmatic rhythms* (eds H Numata, B Helm), pp. 203–225. Tokyo, Japan: Springer.
47. Martinez-Bakker M, Helm B. 2015 The influence of biological rhythms on host–parasite interactions. *Trends Ecol. Evol.* **30**, 314–326. (doi:10.1016/j.tree.2015.03.012)
48. Stevenson TJ, Onishi KG, Bradley SP, Prendergast BJ. 2014 Cell-autonomous iodothyronine deiodinase expression mediates seasonal plasticity in immune function. *Brain Behav. Immunol.* **36**, 61–70. (doi:10.1016/j.bbi.2013.10.008)
49. Borchert R, Renner SS, Calle Z, Navarrete D, Tye A, Gautier L, Spichiger R, von Hildebrand P. 2005 Photoperiodic induction of synchronous flowering near the equator. *Nature* **433**, 627–629. (doi:10.1038/nature03259)
50. Brockman DK, van Schaik CP. 2012 Seasonality and reproductive function. In *Seasonality in primates: studies of living and extinct human and non-human primates* (eds DK Brockman, CP van Schaik), pp. 269–306. Cambridge, UK: Cambridge University Press.
51. Ashmole NP. 1963 The biology of the Wideawake or sooty tern *Sterna fuscata* on Ascension Island. *Ibis* **103**, 297–364. (doi:10.1111/j.1474-919x.1963.tb06757.x)
52. Poole JH, Moss CJ. 1981 Musth in the African elephant, *Loxodonta africana*. *Nature* **292**, 830–831. (doi:10.1038/292830a0)

53. Bronson FH. 2004 Are humans seasonally photoperiodic? *J. Biol. Rhythms* **19**, 180–192. (doi:10.1177/0748730404264658)
54. Huber S, Fieder M, Wallner B, Moser G, Arnold W. 2004 Brief communication: birth month influences reproductive performance in contemporary women. *Hum. Reprod.* **19**, 1081–1082. (doi:10.1093/humrep/deh247)
55. Boland MR, Shahn Z, Madigan D, Hripscak G, Tatonetti NP. 2015 Birth month affects lifetime disease risk: a phenome-wide method. *J. Am. Med. Assoc.* **22**, 1042–1053. (doi:10.1093/jama/ocv046)
56. Seretakis D, Lagiou P, Lipworth L, Signorello LB, Rothman KJ, Tirschopoulos D. 1997 Changing seasonality of mortality from coronary heart disease. *J. Am. Med. Assoc.* **278**, 1012–1014. (doi:10.1001/jama.1997.03550120072036)
57. Haberman S, Capildeo R, Rose FC. 1981 The seasonal variation in mortality from cerebrovascular disease. *J. Neurol. Sci.* **52**, 25–36. (doi:10.1016/0022-510X(81)90131-3)
58. Mackenbach JP, Kunst AE, Looman CW. 1992 Seasonal variation in mortality in the Netherlands. *J. Epidemiol. Community Health* **46**, 261–265. (doi:10.1136/jech.46.3.261)
59. Schreiber G, Avissar S, Tzahor Z, Grisar N. 1991 Rhythms of war. *Nature* **352**, 574–575. (doi:10.1038/352574b0)
60. Myrianthefs P, Karatzas S, Venetsanou K, Grouzi E, Evagelopoulou P, Boutzouka E, Fildissis G, Spiliotopoulou I, Baltopoulos G. 2003 Seasonal variation in whole blood cytokine production after LPS stimulation in normal individuals. *Cytokine* **24**, 286–292. (doi:10.1016/j.cyto.2003.08.005)
61. Klink M, Bednarska K, Blus E, Kielbik M, Sulowska Z. 2012 Seasonal changes in activities of human neutrophils *in vitro*. *Inflamm. Res.* **61**, 11–16. (doi:10.1007/s00011-011-0382-x)
62. Moore SE, Collinson AC, Fulford AJC, Jalil F, Siegrist C-A, Goldblatt D, Hanson LÅ, Prentice AM. 2006 Effect of month of vaccine administration on antibody responses in Gambia and Pakistan. *Trop. Med. Int. Health* **11**, 1529–1541. (doi:10.1111/j.1365-3156.2006.01700.x)
63. Haldar C, Ahmad R. 2010 Photoimmunomodulation and melatonin. *J. Photochem. Photobiol. B Biol.* **98**, 107–117. (doi:10.1016/j.jphotobiol.2009.11.014)
64. Medlock JM, Leach SA. 2015 Effect of climate change on vector-borne disease risk in the UK. *The Lancet Infect. Dis.* **15**, 721–730. (doi:10.1016/S1473-3099(15)70091-5)
65. Altizer S, Dobson A, Hosseini P, Hudson P, Pascual M, Rohani P. 2006 Seasonality and the dynamics of infectious diseases. *Ecol. Lett.* **9**, 467–484. (doi:10.1111/j.1461-0248.2005.00879.x)
66. Grassly NC, Fraser C. 2006 Seasonal infectious disease epidemiology. *Proc. R. Soc. B* **273**, 2541–2550. (doi:10.1098/rspb.2006.3604)
67. Shaman J, Pitzer VE, Viboud C, Grenfell BT, Lipsitch M. 2010 Absolute humidity and the seasonal onset of influenza in the continental United States. *PLoS Biol.* **8**, e1000316. (doi:10.1371/journal.pbio.1000316)
68. Pascual M, Rodo X, Ellner SP, Colwell R, Bouma MJ. 2000 Cholera dynamics and El Niño-Southern oscillation. *Science* **289**, 1766–1769. (doi:10.1126/science.289.5485.1766)
69. Clements A. 1999 *The biology of mosquitoes: sensory reception and behaviour*. London, UK: Chapman and Hall.
70. Russell TL, Lwetoijera DW, Knols BGJ, Takken W, Killeen GF, Ferguson HM. 2011 Linking individual phenotype to density-dependent population growth: the influence of body size on the population dynamics of malaria vectors. *Proc. R. Soc. B* **278**, 3142–3151. (doi:10.1098/rspb.2011.0153)
71. Parham PE, Michael E. 2010 Modelling climate change and malaria transmission. *Adv. Exp. Med. Biol.* **673**, 184–199. (doi:10.1007/978-1-4419-6064-1_13)
72. Morin CW, Comrie AC, Ernst K. 2013 Climate and dengue transmission: evidence and implications. *Environ. Health Perspect.* **121**, 264–1272. (doi:10.1289/ehp.1307303)
73. Canto T, Aranda MA, Ferrer A. 2009 Climate change effects on physiology and population processes of hosts and vectors that influence the spread of hemipteran-borne plant viruses. *Glob. Change Biol.* **15**, 1884–1894. (doi:10.1111/j.1365-2486.2008.01820.x)
74. Kilpatrick AM, Randolph SE. 2012 Drivers, dynamics, and control of emerging vector-borne zoonotic diseases. *Lancet* **380**, 1946–1955. (doi:10.1016/S0140-6736(12)61151-9)
75. Searle KR, Blackwell A, Falconer D, Sullivan M, Butler A, Purse BV. 2013 Identifying environmental drivers of insect phenology across space and time: *Culicoides* in Scotland as a case study. *Bull. Entomol. Res.* **103**, 155–170. (doi:10.1017/S0007485312000466)
76. Pérez de León AA, Teel PD, Auclair AN, Messenger MT, Guerrero FD, Schuster G, Miller RJ. 2012 Integrated strategy for sustainable cattle fever tick eradication in USA is required to mitigate the impact of global change. *Front. Physiol.* **3**, 195. (doi:10.3389/fphys.2012.00195)
77. Kilpatrick AM, Kramer LD, Jones MJ, Marra PP, Daszak P. 2006 West Nile virus epidemics in North America are driven by shifts in mosquito feeding behaviour. *PLoS Biol.* **4**, 606–610. (doi:10.1371/journal.pbio.0040082)
78. Estrada-Peña A, Ayllón N, de la Fuente J. 2012 Impact of climate trends on tick-borne pathogen transmission. *Front. Physiol.* **3**, 1–12. (doi:10.3389/fphys.2012.00064)
79. Ogden NH, Radojevic M, Wu X, Duvvuri VR, Leighton PA, Wu J. 2014 Estimated effects of projected climate change on the basic reproductive number of the Lyme disease vector *Ixodes scapularis*. *Environ. Health Perspect.* **122**, 631–638. (doi:10.1289/ehp.1307799)
80. Garamszegi LZ. 2011 Climate change increases the risk of malaria in birds. *Glob. Change Biol.* **17**, 1751–1759. (doi:10.1111/j.1365-2486.2010.02346.x)
81. Mills LS, Zimova M, Oyler J, Running S, Abatzoglou JT, Lukacs PM. 2013 Camouflage mismatch in seasonal coat color due to decreased snow duration. *Proc. Natl Acad. Sci. USA* **110**, 7360–7365. (doi:10.1073/pnas.1222724110)
82. Klein AM, Vaissiere BE, Cane JH, Steffan-Dewenter I, Cunningham SA, Kremen C, Tscharntke T. 2007 Importance of pollinators in changing landscapes for world crops. *Proc. R. Soc. B* **274**, 303–313. (doi:10.1098/rspb.2006.3721)
83. Polce C *et al.* 2014 Climate-driven spatial mismatches between British orchards and their pollinators: increased risks of pollination deficits. *Glob. Change Biol.* **20**, 2815–2828. (doi:10.1111/gcb.12577)
84. Brittain C, Kremen C, Klein AM. 2013 Biodiversity buffers pollination from changes in environmental conditions. *Glob. Change Biol.* **19**, 540–547. (doi:10.1111/gcb.12043)
85. Garibaldi LA *et al.* 2013 Wild pollinators enhance fruit set of crops regardless of honey bee abundance. *Science* **339**, 1608–1611. (doi:10.1126/science.1230200)
86. Rader R, Reilly J, Bartomeus I, Winfree R. 2013 Native bees buffer the negative impact of climate warming on honey bee pollination of watermelon crops. *Glob. Change Biol.* **19**, 3103–3110. (doi:10.1111/gcb.12264)
87. Durant JM, Anker-Nilssen T, Stenseth NC. 2003 Trophic interactions under climate fluctuations: the Atlantic puffin as an example. *Proc. R. Soc. Lond. B* **270**, 1461–1466. (doi:10.1098/rspb.2003.2397)
88. Visser ME, Holleman LJM. 2001 Warmer springs disrupt the synchrony of oak and winter moth phenology. *Proc. R. Soc. Lond. B* **268**, 289–294. (doi:10.1098/rspb.2000.1363)
89. Post E, Forchhammer MC. 2008 Climate change reduces reproductive success of an Arctic herbivore through trophic mismatch. *Phil. Trans. R. Soc. B* **363**, 2369–2375. (doi:10.1098/rstb.2007.2207)
90. Plard F, Gaillard J-M, Coulson T, Hewison AJM, Delorme D, Warnant C, Bonenfant C. 2014 Mismatch between birth date and vegetation phenology slows the demography of roe deer. *PLoS Biol.* **12**, e1001828. (doi:10.1371/journal.pbio.1001828)
91. Reed TE, Grotan V, Jenouvrier S, Saether B-E, Visser ME. 2013 Population growth in a wild bird is buffered against phenological mismatch. *Science* **340**, 488–491. (doi:10.1126/science.1232870)
92. Husby A, Visser ME, Kruuk LE. 2011 Speeding up microevolution: the effects of increasing temperature on selection and genetic variance in a wild bird population. *PLoS Biol.* **9**, e1000585. (doi:10.1371/journal.pbio.1000585)
93. Thomas DW. 2001 Energetic and fitness costs of mismatching resource supply and demand in seasonally breeding birds. *Science* **291**, 2598–2600. (doi:10.1126/science.1057487)
94. Reed TE, Jenouvrier S, Visser ME. 2013 Phenological mismatch strongly affects individual fitness but not population demography in a woodland passerine. *J. Anim. Ecol.* **82**, 131–144. (doi:10.1111/j.1365-2656.2012.02020.x)
95. Visser ME, Holleman LJM, Gienapp P. 2006 Shifts in caterpillar biomass phenology due to climate

- change and its impact on the breeding biology of an insectivorous bird. *Oecologia* **147**, 164–172. (doi:10.1007/s00442-005-0299-6)
96. van Noordwijk AJ, McCleery RH, Perrins CM. 1995 Selection of timing of great tit (*Parus major*) breeding in relation to caterpillar growth and temperature. *J. Anim. Ecol.* **64**, 451–458. (doi:10.2307/5648)
97. Visser ME, Both C. 2005 Shifts in phenology due to global climate change: the need for a yardstick. *Proc. R. Soc. B* **272**, 2561–2569. (doi:10.1098/rspb.2005.3356)
98. Memmott J, Craze PG, Waser NM, Price MV. 2007 Global warming and the disruption of plant–pollinator interactions. *Ecol. Lett.* **10**, 710–717. (doi:10.1111/j.1461-0248.2007.01061.x)
99. Both C, van Asch M, Bijlsma RG, van den Burg AB, Visser ME. 2009 Climate change and unequal phenological changes across four trophic levels: constraints or adaptations? *J. Anim. Ecol.* **78**, 73–83. (doi:10.1111/j.1365-2656.2008.01458.x)
100. Bartomeus I, Ascher JS, Wagner DL, Danforth BN, Colla S, Kornbluth S, Winfree R. 2011 Climate-associated phenology advances in bee pollinators and bee-pollinated plants. *Proc. Natl Acad. Sci. USA* **108**, 20645–20649. (doi:10.1073/pnas.1115559108)
101. Bartomeus I, Ascher JS, Gibbs J, Danforth BN, Wagner DL, Hedtke SM, Winfree R. 2013 Historical changes in northeastern US bee pollinators related to shared ecological traits. *Proc. Natl Acad. Sci. USA* **110**, 4656–4660. (doi:10.1073/pnas.1218503110)
102. Burkle LA, Marlin JC, Knight TM. 2013 Plant–pollinator interactions over 120 years: loss of species, co-occurrence and function. *Science* **339**, 1611–1615. (doi:10.1126/science.1232728)
103. Bronson FH. 2009 Climate change and seasonal reproduction in mammals. *Phil. Trans. R. Soc. B* **364**, 3331–3340. (doi:10.1098/rstb.2009.0140)
104. Gienapp P, Reed TE, Visser ME. 2014 Why climate change will invariably alter selection pressures on phenology. *Proc. R. Soc. B* **281**, 1793. (doi:10.1098/rspb.2014.1611)
105. Gallai N, Salles JM, Settele J, Vaissière BE. 2009 Economic valuation of the vulnerability of world agriculture confronted with pollinator decline. *Ecol. Econ.* **68**, 810–821. (doi:10.1016/j.ecolecon.2008.06.014)
106. Bale JS, Hayward SAL. 2010 Insect overwintering in a changing climate. *J. Exp. Biol.* **213**, 980–994. (doi:10.1242/jeb.037911)
107. Gregory PJ, Johnson SN, Newton AC, Ingram JSI. 2009 Integrating pests and pathogens into the climate change/food security debate. *J. Exp. Bot.* **60**, 2827–2838. (doi:10.1093/jxb/erp080)
108. Berry WD. 2003 The physiology of induced molting. *Poult. Sci.* **82**, 971–980. (doi:10.1093/ps/82.6.971)
109. Seldin MM, Byerly MS, Petersen PS, Swanson R, Balkema-Buschmann A, Groschup MH, Wong GW. 2014 Seasonal oscillation of liver-derived hibernation protein complex in the central nervous system of non-hibernating mammals. *J. Exp. Biol.* **217**, 2667–2679. (doi:10.1242/jeb.095976)
110. Kessler J. 2004 Selen-Vitamin-E-Versorgung überwachen. *Forum Kleinwiederkäuer* **11**, 6–9.
111. Beck MA, Levander OA, Handy J. 2003 Selenium deficiency and viral infection. *J. Nutr.* **133**, 1463S–1467S.
112. Li XM *et al.* 2013 A circadian clock transcription model for the personalization of cancer chronotherapy. *Cancer Res.* **73**, 7176–7188. (doi:10.1158/0008-5472.CAN-13-1528)
113. Ebling FJ. 2014 On the value of seasonal mammals for identifying mechanisms underlying the control of food intake and body weight. *Horm. Behav.* **66**, 56–65. (doi:10.1016/j.yhbeh.2014.03.009)
114. Sejnowski TJ, Churchland PS, Movshon JA. 2014 Putting big data to good use in neuroscience. *Nat. Neurosci.* **17**, 1440–1441. (doi:10.1038/nn.3839)