



LJMU Research Online

Cunha, FA, Farinatti, P, Jones, H and Midgley, AW

Postexercise hypotension and related hemodynamic responses to cycling under heat stress in untrained men with elevated blood pressure.

<http://researchonline.ljmu.ac.uk/id/eprint/13024/>

Article

Citation (please note it is advisable to refer to the publisher's version if you intend to cite from this work)

Cunha, FA, Farinatti, P, Jones, H and Midgley, AW (2020) Postexercise hypotension and related hemodynamic responses to cycling under heat stress in untrained men with elevated blood pressure. *European Journal of Applied Physiology*. 120 (5). pp. 1001-1013. ISSN 1439-6327

LJMU has developed **LJMU Research Online** for users to access the research output of the University more effectively. Copyright © and Moral Rights for the papers on this site are retained by the individual authors and/or other copyright owners. Users may download and/or print one copy of any article(s) in LJMU Research Online to facilitate their private study or for non-commercial research. You may not engage in further distribution of the material or use it for any profit-making activities or any commercial gain.

The version presented here may differ from the published version or from the version of the record. Please see the repository URL above for details on accessing the published version and note that access may require a subscription.

For more information please contact researchonline@ljmu.ac.uk

<http://researchonline.ljmu.ac.uk/>



Postexercise hypotension and related hemodynamic responses to cycling under heat stress in untrained men with elevated blood pressure

Felipe A. Cunha^{1,2} · Paulo Farinatti^{1,2,3} · Helen Jones⁴ · Adrian W. Midgley^{5,6}

Received: 2 October 2019 / Accepted: 7 March 2020 / Published online: 18 March 2020
© The Author(s) 2020

Abstract

Purpose To investigate the effect of heat stress on postexercise hypotension.

Methods Seven untrained men, aged 21–33 years, performed two cycling bouts at 60% of oxygen uptake reserve expending 300 kcal in environmental temperatures of 21 °C (TEMP) and 35 °C (HOT) in a randomized, counter-balanced order. Physiological responses were monitored for 10-min before and 60-min after each exercise bout, and after a non-exercise control session (CON). Blood pressure (BP) also was measured during the subsequent 21-h recovery period.

Results Compared to CON, systolic, and diastolic BPs were significantly reduced in HOT ($\Delta = -8.3 \pm 1.6$ and -9.7 ± 1.4 mmHg, $P < 0.01$) and TEMP ($\Delta = -4.9 \pm 2.1$ and -4.5 ± 0.9 mmHg, $P < 0.05$) during the first 60 min of postexercise recovery. Compared to TEMP, rectal temperature was 0.6 °C higher ($P = 0.001$), mean skin temperature was 1.8 °C higher ($P = 0.013$), and plasma volume (PV) was 2.6 percentage points lower ($P = 0.005$) in HOT. During the subsequent 21-h recovery period systolic BP was 4.2 mmHg lower in HOT compared to CON ($P = 0.016$) and 2.5 mmHg lower in HOT compared to TEMP ($P = 0.039$).

Conclusion Exercise in the heat increases the hypotensive effects of exercise for at least 22 h in untrained men with elevated blood pressure. Our findings indicate that augmented core and skin temperatures and decreased PV are the main hemodynamic mechanisms underlying a reduction in BP after exercise performed under heat stress.

Keywords Baroreceptor reflex · Blood pressure · Cardiovascular response · Energy expenditure · Thermoregulation

Abbreviations

%VO ₂ R	Percentage of oxygen uptake reserve
ABPM	Ambulatory blood pressure monitoring
BRS	Baroreflex sensitivity
CON	Non-exercise control session
CPET	Maximal cardiopulmonary exercise test
DBP	Diastolic blood pressure
HF	High frequency band
HOT	Hot environment
HR	Heart rate
HRR	Heart rate reserve
HRV	Heart rate variability
LF	Low-frequency band
LFHF ratio	Sympathovagal balance
MAP	Mean arterial pressure
MST	Mean skin temperature
PEH	Postexercise hypotension
PV	Plasma volume
Q	Cardiac output
RER	Respiratory exchange ratio

Communicated by Narihiko Kondo.

✉ Adrian W. Midgley
adrian.midgley@edgehill.ac.uk

¹ Postgraduate Program in Exercise Science and Sports, University of Rio de Janeiro State, Rio de Janeiro, Brazil

² Laboratory of Physical Activity and Health Promotion, University of Rio de Janeiro State, Rio de Janeiro, Brazil

³ Post-Graduate Program in Physical Activity Sciences, Salgado de Oliveira University, Niterói, Rio de Janeiro, Brazil

⁴ Research Institute for Sport and Exercise Sciences, Liverpool John Moores University, Liverpool, UK

⁵ Department of Sport and Physical Activity, Edge Hill University, Ormskirk L39 4QP, Lancashire, UK

⁶ Postgraduate Medical Institute, Edge Hill University, Ormskirk, Lancashire, UK

SBP	Systolic blood pressure
SV	Stroke volume
SVR	Systemic vascular resistance
T_c	Core temperature
TEMP	Temperate environment
T_{sk}	Skin temperature
VCO_2	Carbon dioxide output
V_E	Minute ventilation
VO_2	Oxygen uptake
VO_{2R}	Oxygen uptake reserve

Introduction

A fall in blood pressure is commonly observed after performing a single bout of aerobic exercise, which can persist for up to 24 h when compared to the immediate pre-exercise period (baseline), or a non-exercise control day (Pescatello et al. 2004). The magnitude and duration of this phenomenon, known as postexercise hypotension (PEH), has been suggested to predict the long-term reduction in blood pressure elicited by aerobic training in prehypertensive individuals (Liu et al. 2011), and depends on several factors. These factors include the acute training variables used for exercise prescription, such as intensity, duration, and mode of activity, as well as baseline blood pressure, with progressively more marked hypotensive responses in hypertensive individuals compared to normotensives (see Pescatello 2015 for a review). Less attention has been given to the influence of environmental conditions (Franklin et al. 1993; Lynn et al. 2009). PEH is a highly regulated physiological phenomenon where mean arterial pressure (MAP) is the result of the relationship between cardiac output (Q) and systemic vascular resistance (SVR), via cardiac (central) and vascular (peripheral) function. These mechanisms are affected by heat stress during exercise performed in hot environments (Gonzalez-Alonso et al. 2008; Periard et al. 2011; Wingo et al. 2005) and, therefore, it is feasible that acute blood pressure responses to aerobic exercise are influenced by environmental temperature.

Although aerobic exercise has consistently been shown to induce hypotensive effects in the postexercise period, the underlying physiological mechanisms are still unclear, especially when the exercise is performed in a hot environment. In the first study investigating this topic, involving 11 trained normotensive men, Franklin et al. (1993) evaluated the effect of thermoregulatory mechanisms on PEH during 60-min of recovery from 30-min of upright cycling exercise at 70% VO_{2max} under cool (17.0 ± 0.8 °C and $57.8 \pm 4.3\%$), neutral (21.4 ± 0.5 °C and $51.8 \pm 4.6\%$), and warm (31.1 ± 0.4 °C and $53.0 \pm 4.6\%$) environmental

conditions. Compared to pre-exercise, PEH was only evident when recovery took place in the warm environment [Δ systolic blood pressure (SBP) and MAP: -6.5 and -4.7 mmHg, respectively], which also was associated with significantly higher mean skin temperature (MST) and core temperature (T_c). From a practical perspective, this finding suggests that cutaneous vasodilation may have a key role in inducing a greater magnitude and duration of PEH. Notably, however, this study did not assess physiological variables that have been consistently associated with changes in PEH, such as Q, stroke volume (SV), SVR, plasma volume (PV), and cardiac autonomic function [i.e. baroreflex sensitivity (BRS) and heart rate variability (HVR)] (Cunha et al. 2015b; Halliwill et al. 2013). Another limitation is that ambulatory blood pressure monitoring (ABPM) to establish the duration of the effects of heat stress on PEH was not used. Furthermore, the isolated effect of heat stress during exercise on subsequent PEH was not investigated, since all the exercise bouts were performed in a thermoneutral condition (20.8 ± 0.8 °C and $57.3 \pm 5.9\%$) and exposure to different environmental temperatures only occurred post-exercise (Franklin et al. 1993). Previous research on this topic (Franklin et al. 1993; Lynn et al. 2009) also did not compare the hypotensive responses in untrained individuals with elevated blood pressure. In contrast to a reduced Q in endurance trained populations (Dujic et al. 2006; Senitko et al. 2002), it has been suggested that PEH is secondary to decreased SVR in the general population (Brito et al. 2014; Halliwill et al. 2013). Therefore, the methodological issues associated with previous research make the underlying physiological mechanisms underpinning PEH, and its clinical relevance, unclear within the context of aerobic exercise prescription under heat stress conditions in non-athletic populations.

To promote health among adults, the American College of Sports Medicine (ACSM) recommends a target energy expenditure of between 150 and 400 kcal per exercise bout and an exercise intensity of between 40 and 85% heart rate reserve (HRR) or oxygen uptake reserve (VO_{2R}), assuming a 1:1 relationship between the %HRR and % VO_{2R} (see da Cunha et al. 2011b for a review). From a practical perspective, the HR can be used to monitor and adjust power output (usually determined from the ACSM metabolic equation for cycling) to achieve the target metabolic intensity, while the VO_2 can be used to determine the duration of exercise required to elicit a target energy expenditure. However, whether the change in HR is a valid marker of change in metabolic intensity during prolonged exercise in hot environments is uncertain. The study of Wingo et al. (2005) observed that between 15 and 45 min of constant-load cycling at $\sim 63\%$ VO_{2max} in a hot environment (35 °C), HR

increased by 12% (151 ± 9 vs. 169 ± 10 beats/min, $P < 0.05$), whereas VO_2 increased only by 1.9% (2.69 ± 0.19 vs. 2.74 ± 0.19 L/min, $P < 0.05$). Based upon the maximal HR and VO_2 values obtained during a maximal cardiopulmonary exercise test (CPET) in a temperate environment, the absolute changes in HR and VO_2 revealed a non-linear relationship between %HRR vs. % VO_2R (15 min: $69.0 \pm 5.5\%$ vs. $60.2 \pm 4.1\%$, respectively; 45 min: 84.0 ± 6.0 vs. 61.2 ± 3.8 , respectively). Likewise, those authors also found that constant-load cycling in the heat was associated with a decrease in $\text{VO}_{2\text{max}}$ and an increased % VO_2R . Indeed, the findings of previous studies have indicated marked reductions (e.g. 16–25% or 750–985 mL/min) in $\text{VO}_{2\text{max}}$ during heat stress, when T_c was elevated before the CPET (Nybo et al. 2001; Pirnay et al. 1970). It is clear that prescribing exercise intensity based upon the %HRR response and then estimating the metabolic intensity from % VO_2R assuming a 1:1 relationship, would probably overestimate energy expenditure, especially within the context of prolonged exercise bouts performed under heat stress conditions. On the other hand, the exercise pressor response, which seems to influence blood pressure after exercise, has been shown to be affected by the total amount of muscle work performed and is a surrogate of exercise volume (Chen and Bonham 2010; Halliwill et al. 2013). A recent study by Cunha et al. (2015b), for example, investigated the effects of different CPET modalities (i.e. matched by the maximal intensity) on the magnitude of PEH in healthy men, and observed that only running (exercise mode involving greater energy expenditure) was able to induce PEH. No previous research investigating the effects of heat stress on PEH prescribed exercise bouts by assessing the VO_2 and energy expenditure and, instead, used HR or a measure of external work rate associated with $\text{VO}_{2\text{max}}$ as indicators of metabolic intensity. Hence the exercise volume performed has not been properly controlled, which is an important methodological issue that may confound the interpretation of the effects of heat stress on the magnitude of PEH.

Further research is clearly warranted to investigate PEH elicited by exercise bouts performed in a hot versus temperate environment. The mechanistic basis of PEH also needs to be better understood. Thus, the main purpose of the present study was to evaluate the effect of cycling bouts, performed in a hot versus temperate environment, on PEH in untrained men with elevated blood pressure during a 22-h recovery period. We hypothesized that exercise bouts performed in different environment temperatures would elicit different magnitudes and durations of PEH. A second aim was to investigate the physiological mechanisms underpinning any differences in PEH in response to changes in environmental temperature during the first hour of recovery.

Methods

Ethical Approval

Subjects were informed of the requirements, benefits, and potential risks and discomforts prior to the commencement of the study, and subsequently gave written informed consent. The experimental procedures adhered to the ethical guidelines outlined in the Declaration of Helsinki and the study gained approval from the Human Research Ethics Committee at Edge Hill University. All subjects were informed of the potential risks and discomforts prior to the commencement of the study, and subsequently gave written informed consent.

Participants

Seven untrained men volunteered for the study [mean (SD), age: 26.0 (4.8) years; height: 173.9 (4.3) cm; body mass: 76.8 (7.7) kg; body mass index: 25.7 (0.9) kg m²; SBP: 127.4 (5.9) mmHg; diastolic blood pressure (DBP): 83.7 (3.0) mmHg; resting heart rate: 60 (10) beats/min; resting VO_2 : 0.24 (0.03) L/min; maximal heart rate: 182 (5) beats/min; maximal VO_2 : 2.80 (0.66) L/min]. Inclusion criteria dictated that participants were men who were deemed inactive according to the definition of the American College of Sports Medicine [i.e. not participating in ≥ 30 min of moderate-intensity physical activity on ≥ 3 days per week for ≥ 3 months prior to the study (ACSM 2018)], with a mean screening SBP of 120–139 mmHg and/or diastolic blood pressure (DBP) of 80–89 mmHg (Whelton et al. 2018). The following exclusion criteria were applied: (a) use of cardiovascular and/or metabolic medications; (b) smoking or use of other tobacco products; (c) use of nutritional ergogenic substances that could affect exercise performance; (d) diagnosis of any cardiovascular, respiratory, bone, muscle, or joint problems; and (e) SBP < 120 mmHg and DBP < 80 mmHg.

Blood pressure screening followed European Society of Hypertension guidelines (Topouchian et al. 2006). Participants remained seated in an upright position in a quiet and comfortable environment to stabilize blood pressure, with the right arm resting on a table at heart level. After 15-min of seated rest, three assessments were performed interspersed by 3-min intervals, using an oscillometric device (OMRON™—HEM-433 INT, Bannockburn, IL, USA). Blood pressure was recorded as the mean of the three readings.

Experimental design

Each subject visited the laboratory on five occasions to undertake the following procedures: Visit 1: complete a pre-exercise medical questionnaire, blood pressure screening to ensure the study inclusion criteria were met, and anthropometric measurements; Visit 2: perform a resting VO_2 assessment and CPET in a temperate environment (TEMP, 21 °C); and Visits 3–5: perform a non-exercise control session (CON) in TEMP, and two exercise bouts expending 300 kcal at 60% VO_2R in TEMP and hot (HOT, 35 °C) environmental conditions. The predicted time to achieve 300 kcal during the cycling bouts ranged from 1860 to 3695 s, which was calculated individually from the net VO_2 , assuming that the consumption of 1 L of oxygen releases approximately 5 kcal of energy. All the experimental procedures were performed in an environmental chamber (Grant Instruments, Cambridge, UK) with a constant relative humidity of 40%. The experimental trials were separated by 24–48 h and performed in a randomized, counterbalanced manner.

Prior to undertaking the experimental trials, participants were given 300 mL of water to drink to promote hydration and then body mass was measured. During the baseline and recovery periods associated with CON, TEMP and HOT, physiological measurements were obtained in a supine position for 10-min and 60-min, respectively; however, for the recovery period, the room was kept at a relatively constant temperature (TEMP, 21 °C). When participants achieved 300 kcal in HOT, both doors of the chamber were immediately opened and the thermostat was set to TEMP condition within 10 s of exercise termination. All visits were conducted at the same time of day, starting at 10:00 a.m., to negate any effects of circadian variation. Participants were required to abstain from physical exercise, alcohol, soft drinks, and caffeine in the 24 h preceding the assessments, and fast for 3 h preceding the assessments.

Resting VO_2 assessment

Resting VO_2 was determined prior to calculation of the % VO_2R in accordance with the recommendations of Compher et al. (2006). In brief, this consisted of abstention of physical exercise, alcohol, soft drinks, and caffeine in the 24 h preceding the assessment, fasting for 3 h preceding the assessment, and minimum effort when traveling to the laboratory. On arrival to the laboratory, participants were asked to complete and sign a form to state whether they had conformed to these pre-test procedures. Participants then laid in a quiet environment for 10-min, after which the VO_2 was measured for 40-min in the supine position. The average VO_2 data between minutes 35–40 was used to calculate the % VO_2R for prescription of the exercise bouts, since this time

period has been previously shown to elicit a VO_2 steady-state and high test–retest reliability (Cunha et al. 2013).

Cardiopulmonary exercise testing and constant work rate exercise bouts

The CPET involved a ramp-incremented protocol performed on an electronically-braked cycle ergometer (SRM GmbH, Jülich, Germany) to determine $\text{VO}_{2\text{max}}$, as described elsewhere (Cunha et al. 2015a). The test was considered maximal if the subject satisfied at least three of the four following criteria: (a) maximum voluntary exhaustion as reflected by a score of 19 on the Borg 6–20 scale; (b) 90% of the predicted maximal heart rate ($\text{HR}_{\text{max}} = 220 - \text{age}$), or presence of a heart rate plateau (ΔHR between two consecutive work rates ≤ 4 beats/min); (c) presence of a VO_2 plateau (ΔVO_2 between two consecutive work rates < 2.1 mL/kg/min¹); and (d) a maximal respiratory exchange ratio (RER_{max}) > 1.10 (Howley et al. 1995). All participants were verbally encouraged to provide a maximal effort.

To determine the work rate for the two exercise bouts, 60% VO_2R was calculated from the $\text{VO}_{2\text{max}}$ and resting VO_2 and the obtained VO_2 value was used to calculate the associated cycling power by applying the equation: VO_2 cycling = $3.5 + 12.24 \times \text{power} \times (\text{BW}^{-1})$, where VO_2 is in mL/kg/min¹, and power is in W and BW (body weight) is in kilograms (ACSM 2018). Cycling cadence was maintained at 70 (± 5) revs/min¹ throughout the test and the mean (SD) power output was 136 (36) W. Net energy expenditure was calculated individually from the net VO_2 , which is the additional VO_2 above resting VO_2 induced by the exercise bout (i.e. net $\text{VO}_2 = \text{gross } \text{VO}_2 - \text{resting } \text{VO}_2$) (Swain 2000). The net VO_2 values expressed in mL/kg/min were converted to L/min¹ and then to kcal/min. Based on the values obtained for VO_2 and energy expenditure, the exercise bouts were terminated when each subject had achieved a total energy expenditure of 300 kcal. To negate the confounding effects of the initial (fast) VO_2 on-kinetics (i.e. the anaerobic energy expenditure component of total energy expenditure), the first 5-min interval of each exercise bout was omitted from all analyses (Cunha et al. 2011a, b). Minute ventilation and pulmonary gas exchange were measured breath-by-breath using a silicone oro-nasal face mask connected to a metabolic cart (Oxycon Pro®, Jaeger, Hocksberg, Germany). The turbine flow-meter and gas analyzers of the metabolic cart were calibrated immediately before each exercise test according to the manufacturer's instructions using a 3-L calibration syringe (Quinton Instruments, Seattle, WA), ambient air, and certified standard gases containing $16.0 \pm 0.02\%$ oxygen and $5.0 \pm 0.02\%$ carbon dioxide (Cryoservice Ltd, Worcester, UK). The calibrations also were performed immediately after the test as an extra level of quality assurance that the cart was still working within accepted parameters at the end

of each test. Heart rate was measured continuously using a telemetric cardi tachometer (RS800cx, Polar™, Kempele, Finland).

Measurement at baseline and recovery period to experimental trials

Blood pressure and cardiac autonomic control responses

SBP, DBP and MAP, heart rate variability (HRV) and spontaneous baroreflex sensitivity (SBR) were derived by finger photoplethysmography with a height correction applied from a blood pressure recording from the left brachial artery (Finometer™, FMS, Amsterdam, The Netherlands). A cuff was placed on the left middle finger for a beat-by-beat blood pressure assessment. The data from the Finometer were downloaded onto a PC and analyzed by BeatScope Software (BeatScope 1.1a; Finapres Medical Systems, Amsterdam, The Netherlands). The BeatScope software performs beat-to-beat analysis of the finger arterial pressure and uses filtering and level correction to calculate reconstructed brachial pressures from finger pressures.

For spectral analysis of R–R interval time series, data were processed using a Fast Fourier Transform with Welch's method, with a Hanning window with 50% overlap using a customized algorithm from HeartScope™ II software (version 1.4, A.M.P.S., LLC, New York, USA) (Badilini et al. 2005). Beat-by-beat R–R interval series were then converted into equally spaced time series with 256 ms intervals using cubic spline interpolation (Lazzoli et al. 2003; Task-Force 1996). Spectral analysis was expressed in normalized units (n.u.) (Task-Force 1996). The ratio between low frequency and high frequency bands (LF:HF) was used as an index of sympathovagal balance, with the LF band (0.04–0.15 Hz) being considered as a marker of sympathetic predominance, and the HF band (0.15–0.50 Hz) as a marker of parasympathetic predominance (Cohen and Taylor 2002). The BRS was analyzed from the alpha index from the low frequency band (α -LF) of the beat-by-beat SBP and pulse interval (Parati et al. 2000). Only detected spectral gains with coherence > 0.5 (arbitrary threshold) were accepted.

Hemodynamic responses

Q and SV were determined using an impedance cardiography device (PhysioFlow® Type PF05L1, Manatec, Macheren, France). SVR was calculated as the quotient between MAP and Q. The six ICG surface electrodes (FS-50, Skintact, Innsbruck, Austria) of the PhysioFlow® were placed on the subject's dry skin as stipulated in the manufacturer's instructions (two on the left side of the neck, one on the middle of the sternum, one on the rib bone closest to the left ventricle, and two along the center of the spine).

Before attachment of the electrodes the skin was prepared to optimize signal quality. This involved shaving the skin with a disposal razor, cleaning with alcohol prep swabs (Barclay-Swann Ltd, Peterborough, UK), abrading with a special gel until the skin turns bright pink (Nuprep Skin Prep Gel, Weaver and Company, Aurora, CO), and then cleaning with water. After the electrodes and associated cables were attached, they were secured with micropore surgical tape and secured in place by subjects wearing a tight elasticated cotton vest (Colorline Surgifix® m 25, FRA® Production S.p.A, Italy). The PhysioFlow® auto-calibration procedure was started after obtaining a stable signal as detected by a color graph displayed on the screen by the device. The raw data of each subject was then downloaded onto a PC in Excel file format and reviewed for detection of non-physiological artifacts. These were values corresponding to SV values over time with differences of more than 20% of the mean SV during pre-exercise (average of the last 5-min before exercise) and postexercise (average every 10-min of recovery) that were concomitantly associated with an unchanged HR (i.e. differences of no more than 5% of the mean HR).

Thermoregulatory responses

Skin and core temperatures were measured continuously using a Squirrel Data Logger (2020 Series; Grant Instruments, Shepreth, UK). Participants self-inserted a rectal probe 10 cm past the anal sphincter for the measurement of core temperature (T_c). Four calibrated surface thermistors were attached to the chest, thigh, leg, and arm on the right side of the body and secured in place using Transpore™ Surgical Tape (3 M Healthcare, St. Paul, MN, USA) for the determination of skin temperature (T_{sk}) (Ramanathan 1964). Mean body temperature (MBT) was calculated using the following equation (Colin et al. 1971): MBT (in degrees Celsius) = $0.79 (T_c) + 0.21 (T_{sk})$.

Plasma volume

Capillary blood samples were obtained from the fingertips for the determination of changes in PV derived from hemoglobin and hematocrit measurements (Dill and Costill 1974). Hemoglobin concentration was measured using a HemoCue Hb 201+ analyser (HemoCue AB, Ängelholm, Sweden). Hematocrit was determined by separating the blood cells and plasma by centrifuging 100 μ l of whole blood for 5-min at 3000 rpm (Hawksley MHC Centrifuge; Hawksley, Sussex, UK) and then measuring the hematocrit level using a Micro-Haematocrit Reader (Hawksley, Sussex, UK).

Assessment of 21-h ambulatory blood pressure

Changes in blood pressure were assessed between 13:00 and 10:00 on the next day by a TM-2430 ambulatory blood pressure monitor (A&D Company Ltd, UK). The ABPM fulfilled the criteria of the British Hypertension Society protocol (O'Brien et al. 2000) and was auto-calibrated before each test according to the manufacturer's instructions. The non-dominant arm was used for measurement using an appropriately sized cuff. Participants were instructed on how the device worked and when activated, to hold their arm as still as possible and also to proceed with normal activities, not to shower or exercise until the next morning. Beyond that, all of them were given a standardized activity diary to register during the 21-h monitoring period any unusual physical or emotional events, and sleep and wake times. The monitor was programmed to record SBP and DBP via oscillation every 15-min, except between the hours of 23:00 and 06:00, during which it recorded blood pressure every 30-min to minimize sleep disturbance. The display on the monitor was switched off to prevent feedback to participants. All blood pressure readings rejected by the TM-2430 software as being artifacts (e.g. readings > 250 mmHg) were excluded from analyses. Data sets with < 80% of blood pressure recordings present also were excluded from analyses. The ABPM was fitted to the participants after CON, TEMP and HOT for the next 21-h period. When each subject came back to the laboratory the data were downloaded to a computer for determination of average blood pressure for daytime, night, and waking hours.

Statistics

All statistical analyses were completed using IBM SPSS Statistics 22 (SPSS Inc., Chicago, IL). Data were summarized using means and standard deviations (SD). Cohen's *d* effect sizes for mean differences were calculated and defined as small (0.20), moderate (0.50), and large (0.80) (Cohen 1988). Student *t* tests were used to investigate differences between VO_2 and time to achieve 300 kcal throughout

exercise, and postexercise changes in body weight and PV in TEMP vs. HOT, respectively. Absolute values for all physiological responses during the 60-min post-exercise period (using 6×10 min time bins) for each condition (CON, TEMP, and HOT) were investigated using linear mixed models. Random effects were included in models if they significantly improved model fit, as indicated by a likelihood ratio test. The linear mixed model for the LF:HF ratio exhibited heteroscedastic residuals, which was corrected using a natural log transform. Separate models were used to investigate mean differences in baseline physiological values and 21-h blood pressure responses between conditions. In the event of significant main effects or interaction effects post hoc pairwise comparisons, with Sidak-adjusted *P* values, were conducted. The relationship between delta PV and delta MAP in the 60-min postexercise recovery period in TEMP and HOT was investigated using the Pearson correlation coefficient. Statistical significance for all null hypothesis significance tests was regarded as $P < 0.05$.

Results

Table 1 presents the mean (SD) VO_2 , time to achieve an energy expenditure of 300 kcal, and changes in body weight and PV during continuous exercise bouts at 60% VO_2R in TEMP and HOT. Compared to TEMP, VO_2 was significantly lower in HOT (mean difference = 0.16 L/min, $P = 0.023$), whereas the observed time to achieve an energy expenditure of 300 kcal at 60% VO_2R was 11.9% higher in HOT versus TEMP ($P = 0.014$). Reductions in body weight and percentage plasma volume from baseline and post control to 60-min postexercise recovery were greater in HOT versus TEMP ($P \leq 0.01$).

Blood pressure responses

Figure 1 shows the blood pressure responses at baseline, during CON, and during the first hour of postexercise recovery in TEMP and HOT. Significant differences

Table 1 Mean \pm SD VO_2 , time to achieve 300 kcal energy expenditure, and changes in body mass and plasma volume from continuous exercise bouts in TEMP and HOT ($N = 7$)

Variables	TEMP	HOT	Mean diff	95% CI	<i>t</i> test	<i>P</i> value	Effect size (Cohen's <i>d</i>)
	Mean (SD)	Mean (SD)					
VO_2 (L/min)	1.79 (0.44)	1.63 (0.43)	0.16	0.03–0.29	3.0	0.023	0.40
Time to achieve 300 kcal (s)	2125 (549)	2366 (681)	241	70–412	3.5	0.014	0.42
Δ Body mass (kg)	– 0.6 (0.4)	– 1.6 (0.4)	1.0	0.6–1.3	6.2	0.001	2.7
Δ Plasma volume (%)	– 1.8 (1.7)	– 4.3 (1.5)	2.4	0.8–4.0	3.7	0.010	1.68

VO_2 oxygen uptake; Δ body mass difference between postexercise vs. baseline, Δ plasma volume difference between average 60-min postexercise vs. postcontrol

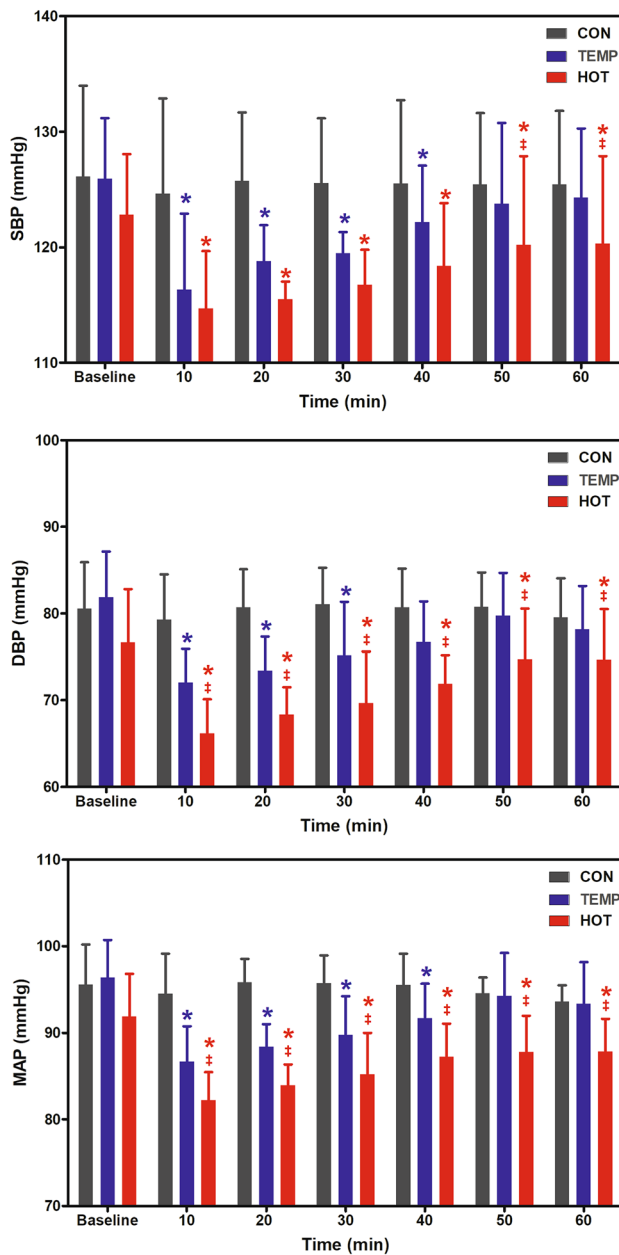


Fig. 1 Systolic blood pressure (SBP), diastolic blood pressure (DBP), and mean arterial pressure (MAP) at baseline, during the 60 min control condition (CON), and the first 60 min of postexercise recovery in temperate (TEMP) and hot (HOT) conditions. *Significantly different to CON; ‡HOT significantly different to TEMP ($P < 0.05$)

between conditions were observed, however, the differences were moderated by condition x time interactions for SBP ($F = 12.4, P < 0.001$), DBP ($F = 9.6, P = 0.003$), and MAP ($F = 9.4, P < 0.001$). Within 60-min post-CON, the coefficient of variation (CV) for SBP, DBP, and MAP were 5.0%, 5.2%, and 3.2%, respectively. The largest differences between CON and TEMP (SBP: 125 ± 7 and 122 ± 5 mmHg; DBP: 81 ± 4 and 77 ± 5 mmHg; MAP:

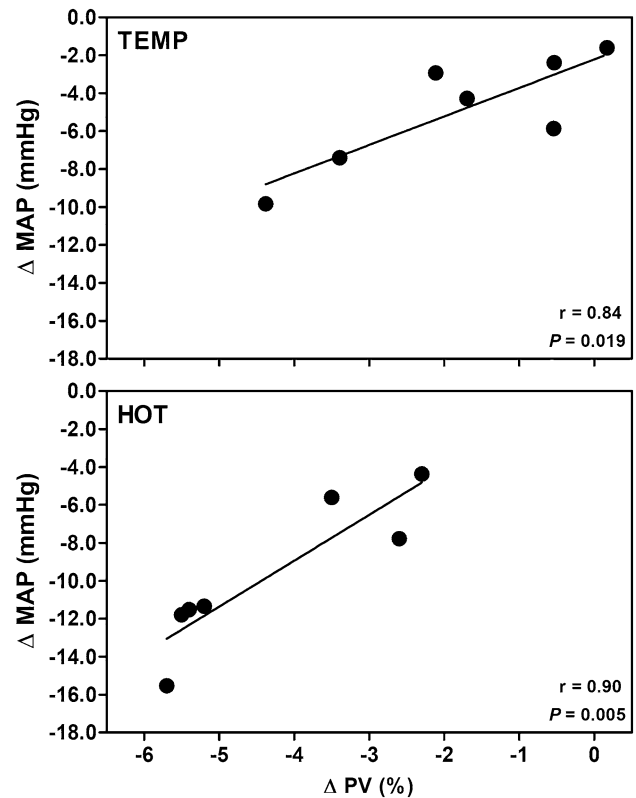


Fig. 2 Relationship between the change in plasma volume (ΔPV) and change in mean arterial pressure (ΔMAP) during the first 60-min of postexercise recovery in the temperate (TEMP) and hot (HOT) conditions. Delta (Δ) = mean difference between CON and postexercise recovery

95 ± 4 and 91 ± 4 mmHg, respectively) and between CON and HOT (SBP: 125 ± 7 and 118 ± 5 mmHg; DBP: 81 ± 4 and 72 ± 3 mmHg; MAP: 95 ± 4 and 87 ± 4 mmHg, respectively) were observed in the first 40-min of recovery. Significant differences between TEMP and HOT were observed during the whole 60-min period for DBP and MAP, but only during the last 20-min for SBP. The changes in MAP over time were significantly related to the changes in PV in both the TEMP ($r = 0.84, P = 0.019$) and HOT ($r = 0.90, P = 0.005$) conditions (see Fig. 2).

Hemodynamic responses

Figure 3 shows the hemodynamic responses at baseline, during CON, and during the first hour of postexercise recovery in TEMP and HOT. The heart rate and Q were significantly higher in TEMP and HOT versus CON. The significant condition x time interactions for heart rate ($F = 17.9, P < 0.001$) and Q ($F = 7.1, P = 0.004$), however, indicated that these differences were greatest in the first 10-min of recovery. No significant differences between conditions were observed for SV. Significant differences between conditions also were

Fig. 3 Heart rate (HR), stroke volume (SV), cardiac output (Q), and systemic vascular resistance (SVR) at baseline, during the 60 min control condition (CON), and the first 60 min of postexercise recovery in temperate (TEMP) and hot (HOT) conditions. *Significantly different to CON; †HOT significantly different to TEMP ($P < 0.05$)

observed for SVR ($F = 19.7$, $P < 0.001$), however, there was insufficient statistical evidence to suggest the differences were moderated by time ($F = 1.5$, $P = 0.23$). The SVR was 6.4 mmHg/L/min lower in TEMP compared to CON ($P = 0.002$) and 8.2 mmHg/L/min lower in HOT compared to CON ($P < 0.001$). The 1.8 mmHg/L/min lower SVR in HOT compared to TEMP was not statistically significant ($P = 0.51$).

Thermoregulatory responses

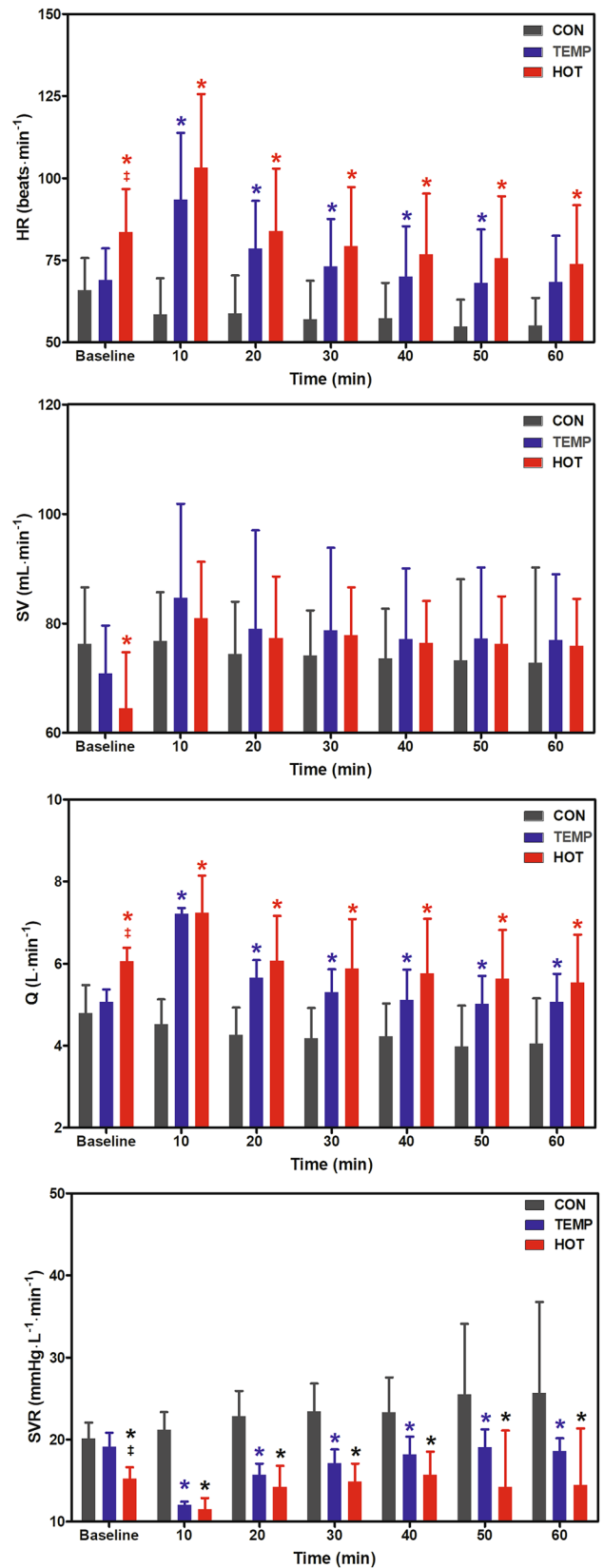
Figure 4 shows the body temperatures at baseline, during CON, and during the first hour of postexercise recovery in TEMP and HOT. Significant differences between conditions were observed for mean skin temperature [MST ($F = 112.9$, $P \leq 0.001$)], core temperature [T_c ($F = 43.3$, $P < 0.001$)], and mean body temperature [MBT ($F = 198.9$, $P \leq 0.001$)], where body temperatures were significantly higher in TEMP and HOT compared to CON, and significantly higher in HOT versus TEMP. Significant condition \times time interactions were observed for MST ($F = 6.4$, $P = 0.002$) and MBT ($F = 7.2$, $P = 0.001$), characterized by a significant difference in temperatures between HOT and CON and between HOT and TEMP during the 60-min of recovery.

Cardiac autonomic responses

Figure 5 shows the autonomic responses at baseline, during CON, and during the first hour of postexercise recovery in TEMP and HOT. Significant differences between conditions were observed for LF, HF, lnLF:HF ratio, and BRS. The LF and lnLF:HF ratio were higher, and HF and BRS lower, in TEMP and HOT compared to CON. Significant condition \times time interaction effects for LF ($F = 7.0$, $P = 0.004$), HF ($F = 7.2$, $P = 0.003$), lnLF:HF ratio ($F = 7.1$, $P = 0.005$), and BRS ($F = 16.3$, $P < 0.001$), however, indicated that the greatest differences were observed during the first 30-min of recovery.

21-h ambulatory blood pressure responses

Table 2 shows the mean (SD) ambulatory SBP and DBP responses over the 21-h recovery period subsequent to the initial 1-h recovery. Significant differences in SBP between



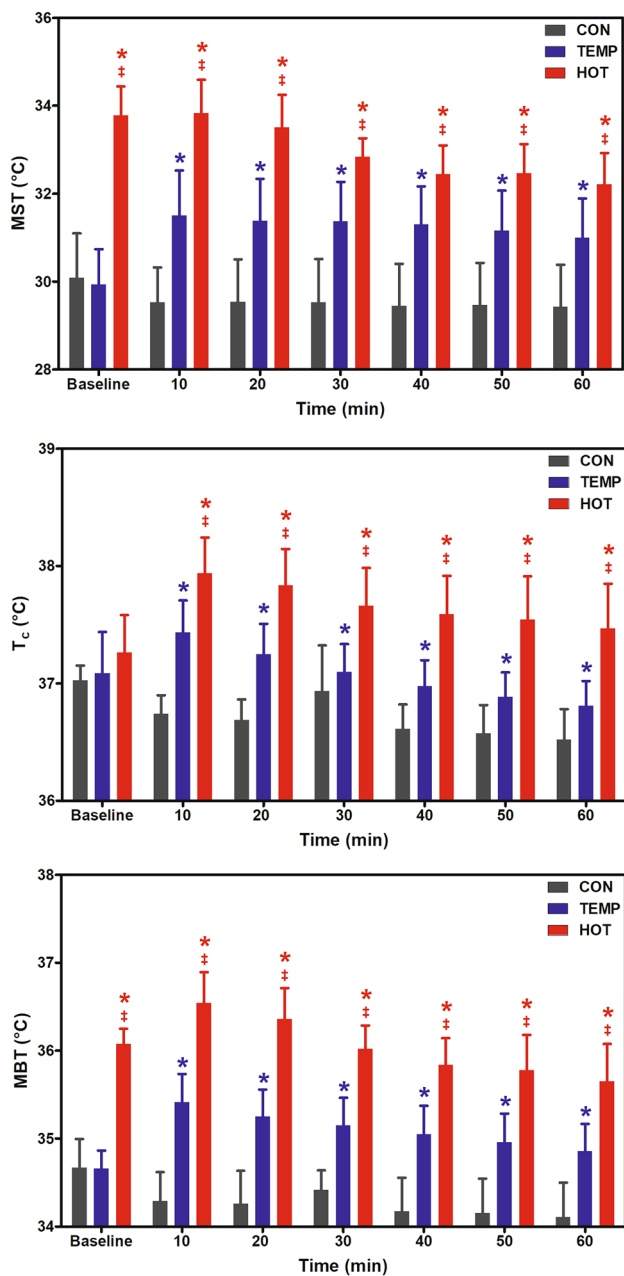


Fig. 4 Mean skin temperature (MST), core temperature (T_c), and mean body temperature (MBT) at baseline, during the 60 min control condition (CON), and the first 60 min of postexercise recovery in temperate (TEMP) and hot (HOT) conditions. *Significantly different to CON; [‡]HOT significantly different to TEMP ($P < 0.05$)

conditions were observed ($F = 10.1$, $P = 0.006$), where SBP was 4.2 mmHg lower in HOT compared to CON ($P = 0.016$) and 2.5 mmHg lower in HOT compared to TEMP ($P = 0.039$). There was no main effect for condition

for DBP ($F = 0.2$, $P = 0.80$) and no condition \times time interaction for either SBP ($F = 0.9$, $P = 0.51$) or DBP ($F = 0.5$, $P = 0.72$).

Discussion

The present study adds to current knowledge by investigating whether an acute cycling bout performed in the heat prolongs hypotensive effects compared to a temperate environment in untrained men with elevated blood pressure. The main finding was that only the cycling bout expending 300 kcal at 60% VO_2R in a hot environment (i.e. 35 °C) was able to induce statistically significant ambulatory SBP reductions during the 21-h observed recovery period, with the most prominent reductions occurring during the daytime (13:00 to 22:00 h) and sleeping (23:00–06:00 h) hours. Within this context, the physiological mechanisms that underpin the differences in PEH between HOT and TEMP (at least for the first 60-min recovery period) appear to be augmented core and skin temperatures, and a reduced PV via increased fluid loss, which may have led to persistent peripheral vasodilatation as the main pathway to evaporative heat loss following exercise in HOT.

To-date, few studies have investigated the influence of heat stress on PEH following aerobic exercise (Franklin et al. 1993; Lynn et al. 2009), and none investigated these responses in untrained men with elevated blood pressure using exercise bouts matched by energy expenditure, and none used ABPM. Only the exercise bout in the heat in our study was able to promote PEH over the 21-h recovery period subsequent to the initial 1-h recovery, since PEH was only evident for up to 40-min of the recovery period in TEMP (see Fig. 1 and Table 2). PEH can be considered a desirable effect of exercise, since chronic reductions in blood pressure from engaging in long-term aerobic exercise programs are due largely to the summative effects of the blunted blood pressure response observed after single acute bouts of aerobic exercise (Liu et al. 2011). It is worth noting, however, that more pronounced PEH such as that observed in the present study by ABPM following exercise in the HOT condition, increases the risk of vasovagal syncope, which is an undesirable response that may occur during recovery from exercise especially when performed in the heat (McCord et al. 2008). Indeed, caution must be taken regarding exercise prescription aimed at inducing PEH under heat stress conditions. Our findings showed that PEH over 22 h was substantially marked by reducing heat load through sweating, plasma volume shifts and vasodilatation. In places commonly characterized by temperatures higher than 35 °C (e.g. 40 °C in Rio de Janeiro, Brazil), however, it would be very likely that PEH could reflect marked dehydration, which would not be desirable among untrained subjects with

Fig. 5 Low-frequency component (LF), high-frequency component (HF), logarithmically transformed sympatho-vagal balance (InLF:HF ratio), and baroreflex sensitivity (BRS) at baseline, during the 60 min control condition (CON), and the first 60 min of postexercise recovery in temperate (TEMP) and hot (HOT) conditions. *Significantly different to CON ($P < 0.05$)

elevated blood pressure and, therefore, not recommended for improving health.

Partially in disagreement with the results of a previous study (Franklin et al. 1993), since the present investigation was also able to observe PEH in TEMP, our findings indicate that augmented core and skin temperatures and decreased PV are the main hemodynamic mechanisms underlying a reduction in blood pressure after exercise performed under heat stress in untrained men. Compared to CON, PV was reduced by 1.8% and 4.3% during 60-min of recovery after TEMP and HOT, respectively. The greater reduction in PV in HOT, which was strongly associated with the reduction in MAP (see Fig. 2), was also due to greater fluid loss in HOT versus TEMP [e.g. body mass loss of 1.6 kg (2.1%) vs. 0.6 kg (0.8%), respectively] (see Table 1). This is in agreement with the findings of previous studies (Serwah and Marino 2006; Marino et al. 2010). Marino et al. (2010) observed a mean body mass loss of 1.61 kg (2.1%) in 7 moderately trained individuals (age: 20.6 ± 1.1 year; VO_{2max} : 3.8 ± 0.2 L/min) in response to 60 min of intense self-paced cycling without hydration (6×1 -min “all-out” sprints at 10-min intervals under ~ 33.2 °C and $\sim 64\%$ relative humidity). Similarly, Serwah and Marino (2006) reported a decrease in body mass of 1.3 kg (1.7%) in eight moderately to highly trained men (age: 24.5 ± 1.0 years; VO_{2max} : 3.6 to 4.7 L/min) after cycling for 90 min at $\sim 70\%$ of peak power output in a warm condition (31 °C) without water replacement. Comparisons between the results of the aforementioned studies should be viewed with caution, however, considering the different exercise protocols, environmental conditions, baseline hydration level, the subject’s tolerance to discomfort during heat exposure, and cardiorespiratory fitness status.

On the other hand, when compared to CON, HR was higher in HOT and TEMP (42% and 30%, respectively), which in turn induced a greater postexercise Q in both HOT and TEMP conditions (42% and 31%, respectively). Unlike heart rate and Q, SVR also was reduced by 29% and 50% during 60-min of recovery after TEMP and HOT, respectively (see, Fig. 3). Even in the absence of statistical significance between HOT and TEMP for such hemodynamic responses (i.e. likely a type II statistical error due to a small sample size), the SVR tended towards a persistent peripheral vasodilatation in HOT, which has been associated with

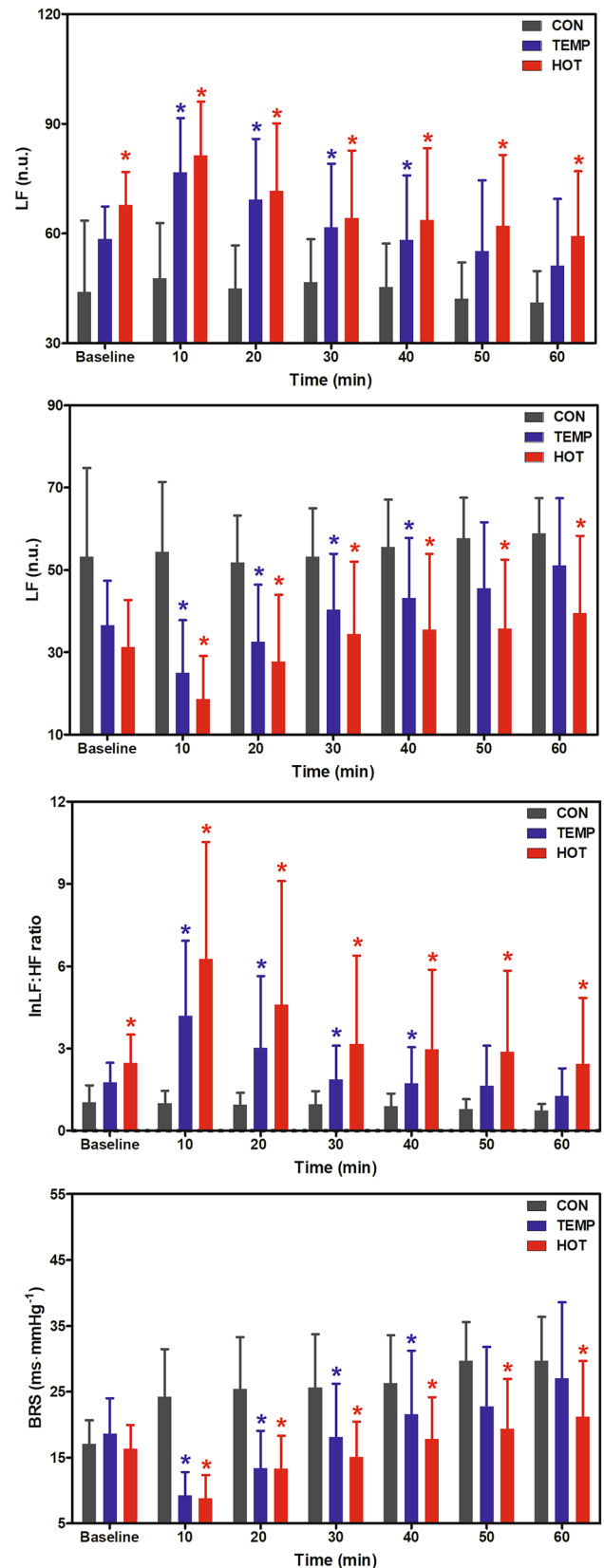


Table 2 Mean (SD) systolic and diastolic blood pressure during daytime (13:00–22:00 h), sleeping (23:00–06:00 h), and waking hours (06:00–10:00 h) in the control (CON), temperate (TEMP), and hot (HOT) conditions

	Systolic blood pressure (mmHg)						Diastolic blood pressure (mmHg)					
	CON		TEMP		HOT		CON		TEMP		HOT	
Day	123.5	(6.3)	120.7	(4.8)	118.0	(5.6)*	72.2	(5.0)	71.8	(1.5)	71.7	(2.7)
Sleep	105.5	(11.8)	105.5	(7.8)	100.8	(6.7)*	58.7	(7.8)	60.0	(8.7)	57.8	(6.6)
Awake	117.7	(6.5)	117.3	(12.2)	117.0	(3.8)*	70.2	(8.2)	65.0	(7.0)	68.8	(4.2)

*Significant main effect for condition ($P < 0.05$)

elevations in skin and core temperature that induce changes in skin blood flow (Franklin et al. 1993). In this regard, the observations of Franklin et al. (1993) from 10 normotensive and highly fit endurance-trained men (age: ~21 years; SBP/DBP: ~121/63 mmHg; VO_{2max} : ~4.73 ± 0.88 L/min) were somewhat similar to our results, if we consider changes in PEH in response to changes in environmental temperature. The authors demonstrated that the occurrence of the PEH phenomenon depended on the environmental condition in which the participants recovered from cycling in a temperate environment, compared to baseline. For example, a significant reduction in MAP of -4.7 (~6%) mmHg was observed during 60-min recovery in the heat, but no changes were observed when the recovery took place in neutral and cool temperatures. Like MAP, significantly elevated skin and core temperatures were only observed for 60-min in the warm recovery condition, attenuating heat loss compared to neutral and cool conditions. According to the authors, taking into account that blood flow to the skin increases when core temperature and MST are elevated (Roddie and Shepherd 1956), a plausible explanation for the occurrence of PEH only in the warm condition was likely due to a persistent vasodilation (decreased SVR estimated in ~24%) in response to a significant elevation in skin and core temperatures for 60-min in the warm recovery condition (Franklin et al. 1993).

Lynn et al. (2009) investigated the PEH response to heat stress in 14 normotensive and highly fit endurance-trained men (age: ~26 years; SBP/DBP: ~111/61 mmHg; VO_{2max} : 4.6 L/min) after performing 60-min cycling bouts at 60% VO_{2peak} under three conditions: (1) Control: temperate condition (22 °C and 30% humidity) without water replacement; (2) Fluid: temperate condition (22 °C and 30% humidity) with water replacement; and (3) Warm: hot condition (30 °C and 30% humidity) without water replacement. Notably, all exercise conditions elicited similar reductions in MAP during the 90-min recovery period compared to baseline ($P > 0.05$). Like MAP, postexercise Q and systemic vascular conductance in Control were lower than baseline ($P = 0.001$), while the Fluid condition partially mitigated the postexercise decrease in Q (e.g. ~0.41 L/min higher than Control). Furthermore, exercise in the Warm condition also attenuated the decrease in postexercise Q, suggesting

a role for thermal load on the haemodynamic recovery pattern from exercise performed in heat stress. Similarly to Q, postexercise systemic vascular conductance remained above baseline values for Fluid and Warm conditions. The authors hypothesized that this novel and unanticipated finding may be attributable to an elevated core temperature, which increased heart rate and myocardial contractility. However, results from the present study are not consistent with this premise, since the magnitude and duration of hypotension during the 22-h recovery from cycling bouts were significantly greater in HOT versus TEMP (see Fig. 1 and Table 2). These conflicting findings might be due to the characteristics of the volunteers, since Lynn et al. (2009) compared these responses in highly fit endurance-trained men compared to the present study that included untrained men with elevated blood pressure (mean VO_{2max} : 2.80 L/min).

The PEH observed in both TEMP and HOT conditions was also followed by a significant reduction in BRS during the postexercise recovery compared to CON (see Fig. 5). Additionally, the HRV analysis showed that during recovery sympathetic activity (LF component) remained more elevated than parasympathetic activity (HF component), resulting in higher sympathovagal balance (LF:HF ratio) concomitant to the reduction in blood pressure (see Fig. 1). The data from the present study concur with previous reports from studies using spectral analysis (Cunha et al. 2015b, 2016; Fonseca et al. 2018; Halliwill et al. 1996a) indicating that PEH was accompanied by a shift in cardiac autonomic balance, characterized by increased sympathetic and reduced parasympathetic activity, where the attenuated BRS also suggests a persistent sympathetic rather than vagal activation after exercise. Furthermore, from our findings it might be speculated that such increases in sympathetic activity could be a physiological response to offset the reduction in SBP and to compensate for the resetting of the baroreflex (Halliwill et al. 1996b).

Some limitations of this study must be acknowledged. Firstly, it was not possible to control the physical activity levels during the 21-h recovery period assessed by accelerometry to ensure that the physiological demands during most of the recovery period were similar among CON, TEMP and HOT conditions. Secondly, for logistic reasons it was

not possible to weigh the participants 22 h after the exercise bouts or control fluid intake post-exercise and, therefore, there is a possibility that changes in BP could be at least partly due to un-replenished fluid losses. Thirdly, the mean differences between CON and TEMP for SBP (Δ -3 mmHg), DBP (Δ -4 mmHg), and MAP (Δ -4 mmHg) were below or similar to the CVs of 5% (6 mmHg), 5.2% (4 mmHg), and 3.2% (3 mmHg), respectively. However, this methodological issue was not observed in HOT condition, since the mean changes in the first 60-min of recovery for SBP (Δ -7 mmHg), DBP (Δ -9 mmHg) and MAP (Δ -8 mmHg) were higher than those CVs related to post-CON. Fourthly, the sample size of 7 subjects was small and may have favored the type II error for the physiological variables investigated after exercise and our data must be interpreted with this in mind.

In conclusion, exercise in the heat increases the hypotensive effects following exercise for at least 22 h in untrained men with elevated blood pressure. The underlying mechanisms (at least for the first 60-min recovery period) appear to be increased core and skin temperatures, and a reduced PV via increased fluid loss, which may have led to persistent peripheral vasodilatation produced as the main pathway of heat loss following exercise in HOT. Further research is warranted to ratify the present findings, by observing PEH and its potential underlying mechanisms following exercise bouts in the heat, using different exercise modes and intensities matched for overall volume.

Acknowledgements We thank Jourdan Curran and Phillip Chandler for their excellent technical assistance with experiment procedures. We also would like to extend our thanks to all of our volunteers for their efforts during their participation.

Author contributions Experimental procedures and analyses were performed at the Department of Sport and Physical Activity, Edge Hill University, England. FAC, PF, HJ, and AWM conceived the study. FAC and AWM designed experiments and contributed to data collection and/or analysis. FAC and AWM drafted the manuscript. PF and HJ contributed to critically revising of this manuscript. All authors approved the final version.

Funding This study was partially supported by the Carlos Chagas Filho Foundation for the Research Support in Rio de Janeiro and by the Brazilian Council for the Research Development.

Compliance with ethical standards

Conflict of interest The authors have no conflict of interest that relates to the content of this article.

Open Access This article is licensed under a Creative Commons Attribution 4.0 International License, which permits use, sharing, adaptation, distribution and reproduction in any medium or format, as long as you give appropriate credit to the original author(s) and the source, provide a link to the Creative Commons licence, and indicate if changes were made. The images or other third party material in this article are included in the article's Creative Commons licence, unless indicated

otherwise in a credit line to the material. If material is not included in the article's Creative Commons licence and your intended use is not permitted by statutory regulation or exceeds the permitted use, you will need to obtain permission directly from the copyright holder. To view a copy of this licence, visit <http://creativecommons.org/licenses/by/4.0/>.

References

- ACSM (2018) ACSM's guidelines for exercise testing and prescription. Kluwer Wolters, Philadelphia
- Badilini F, Pagani M, Porta A (2005) HeartScope: a software tool addressing autonomic nervous system regulat. *Comput Cardiol* 2005:259–262. <https://doi.org/10.1109/CIC.2005.1588086>
- Brito LC, Queiroz ACC, Forjaz CLM (2014) Influence of population and exercise protocol characteristics on hemodynamic determinants of post-aerobic exercise hypotension. *Braz J Med Biol Res* 47(8):626–636. <https://doi.org/10.1590/1414-431X20143832>
- Chen CY, Bonham AC (2010) Postexercise hypotension: central mechanisms. *Exerc Sport Sci Rev* 38(3):122–127. <https://doi.org/10.1097/JES.0b013e3181e372b5>
- Cohen J (1988) Statistical power analysis for the behavioral sciences. L. Erlbaum Associates, Hillsdale
- Cohen MA, Taylor JA (2002) Short-term cardiovascular oscillations in man: measuring and modelling the physiologies. *J Physiol* 542(Pt 3):669–683. <https://doi.org/10.1113/jphysiol.2002.017483>
- Colin J, Timbal J, Houdas Y, Boutelier C, Guieu JD (1971) Computation of mean body temperature from rectal and skin temperatures. *J Appl Physiol* 31(3):484–489
- Compher C, Frankenfield D, Keim N, Roth-Yousey L (2006) Best practice methods to apply to measurement of resting metabolic rate in adults: a systematic review. *J Am Diet Assoc* 106(6):881–903. <https://doi.org/10.1016/j.jada.2006.02.009>
- Cunha F, Midgley AW, Pescatello L, Soares PP, Farinatti P (2016) Acute hypotensive response to continuous and accumulated isocaloric aerobic bouts. *Int J Sports Med* 37(11):855–862. <https://doi.org/10.1055/s-0042-104197>
- Cunha FA, Midgley A, Montenegro R, Vasconcellos F, Farinatti P (2015a) Utility of a non-exercise $\dot{V}O_{2\max}$ prediction model for designing ramp test protocols. *Int J Sports Med* 36(10):796–802. <https://doi.org/10.1055/s-0034-1395590>
- Cunha FA, Midgley AW, Monteiro W, Freire R, Lima T, Farinatti PT (2013) How long does it take to achieve steady state for an accurate assessment of resting $\dot{V}O_2$ in healthy men? *Eur J Appl Physiol* 113(6):1441–1447. <https://doi.org/10.1007/s00421-012-2571-x>
- Cunha FA, Midgley AW, Monteiro WD, Campos FK, Farinatti PT (2011a) The relationship between oxygen uptake reserve and heart rate reserve is affected by intensity and duration during aerobic exercise at constant work rate. *Appl Physiol Nutr Metab* 36(6):839–847. <https://doi.org/10.1139/h11-100>
- Cunha FA, Midgley AW, Soares PP, Farinatti PT (2015b) Postexercise hypotension after maximal short-term incremental exercise depends on exercise modality. *Appl Physiol Nutr Metab* 40(6):605–614. <https://doi.org/10.1139/apnm-2014-0354>
- da Cunha FA, Farinatti Pde T, Midgley AW (2011b) Methodological and practical application issues in exercise prescription using the heart rate reserve and oxygen uptake reserve methods. *J Sci Med Sport* 14(1):46–57. <https://doi.org/10.1016/j.jsams.2010.07.008>
- Dill DB, Costill DL (1974) Calculation of percentage changes in volumes of blood, plasma, and red cells in dehydration. *J Appl Physiol* 37(2):247–248
- Dujic Z, Ivancev V, Valic Z, Bakovic D, Marinovic-Terzic I, Eterovic D, Wisloff U (2006) Postexercise hypotension in moderately trained athletes after maximal exercise. *Med Sci Sports Exerc* 38(2):318–322. <https://doi.org/10.1249/01.mss.0000187460.73235.3b>

- Fonseca GF, Farinatti PTV, Midgley AW, Ferreira A, de Paula T, Monteiro WD, Cunha FA (2018) Continuous and accumulated bouts of cycling matched by intensity and energy expenditure elicit similar acute blood pressure reductions in prehypertensive men. *J Strength Cond Res* 32(3):857–866. <https://doi.org/10.1519/JSC.0000000000002317>
- Franklin PJ, Green DJ, Cable NT (1993) The influence of thermoregulatory mechanisms on post-exercise hypotension in humans. *J Physiol* 470:231–241
- Gonzalez-Alonso J, Crandall CG, Johnson JM (2008) The cardiovascular challenge of exercising in the heat. *J Physiol* 586(1):45–53. <https://doi.org/10.1113/jphysiol.2007.142158>
- Halliwill J, Taylor JA, Eckberg DL (1996a) Impaired sympathetic vascular regulation in humans after acute dynamic exercise. *J Physiol* 495(1):279–288
- Halliwill JR, Buck TM, Laceywell AN, Romero SA (2013) Postexercise hypotension and sustained postexercise vasodilatation: what happens after we exercise? *Exp Physiol* 98(1):7–18. <https://doi.org/10.1113/expphysiol.2011.058065>
- Halliwill JR, Taylor JA, Eckberg DL (1996b) Impaired sympathetic vascular regulation in humans after acute dynamic exercise. *J Physiol* 495(Pt 1):279–288
- Howley ET, Bassett DR Jr, Welch HG (1995) Criteria for maximal oxygen uptake: review and commentary. *Med Sci Sports Exerc* 27(9):1292–1301
- Lazzoli JK, Soares PP, da Nobrega AC, de Araujo CG (2003) Electrocardiographic criteria for vagotonia-validation with pharmacological parasympathetic blockade in healthy subjects. *Int J Cardiol* 87(2–3):231–236. [https://doi.org/10.1016/S0167-5273\(02\)00330-3](https://doi.org/10.1016/S0167-5273(02)00330-3)
- Liu S, Goodman J, Nolan R, Lacombe S, Thomas SG (2011) Blood pressure responses to acute and chronic exercise are related in prehypertension. *Med Sci Sports Exerc* 44(9):1644–1652. <https://doi.org/10.1249/MSS.0b013e31825408fb>
- Lynn BM, Minson CT, Halliwill JR (2009) Fluid replacement and heat stress during exercise alter post-exercise cardiac haemodynamics in endurance exercise-trained men. *J Physiol* 587(Pt 14):3605–3617. <https://doi.org/10.1113/jphysiol.2009.171199>
- Marino FE, Cannon J, Kay D (2010) Neuromuscular responses to hydration in moderate to warm ambient conditions during self-paced high-intensity exercise. *Br J Sports Med* 44(13):961–967. <https://doi.org/10.1136/bjism.2009.054973>
- McCord JL, Pellingier TK, Lynn BM, Halliwill JR (2008) Potential benefit from an H1-receptor antagonist on postexercise syncope in the heat. *Med Sci Sports Exerc* 40(11):1953–1961. <https://doi.org/10.1249/MSS.0b013e31817f1970>
- Nybo L, Jensen T, Nielsen B, Gonzalez-Alonso J (2001) Effects of marked hyperthermia with and without dehydration on VO₂ kinetics during intense exercise. *J Appl Physiol* (1985) 90(3):1057–1064. <https://doi.org/10.1152/jappl.2001.90.3.1057>
- O'Brien E, Coats A, Owens P, Petrie J, Padfield PL, Littler WA, de Swiet M, Mee F (2000) Use and interpretation of ambulatory blood pressure monitoring: recommendations of the British hypertension society. *BMJ* 320(7242):1128–1134
- Parati G, Di Rienzo M, Mancia G (2000) How to measure baroreflex sensitivity: from the cardiovascular laboratory to daily life. *J Hypertens* 18(1):7–19
- Périard JD, Cramer MN, Chapman PG, Caillaud C, Thompson MW (2011) Cardiovascular strain impairs prolonged self-paced exercise in the heat. *Exp Physiol* 96(2):134–144. <https://doi.org/10.1113/expphysiol.2010.054213>
- Pescatello LS (2015) Effects of exercise on hypertension: from cells to physiological systems. Humana Press, New York, NY
- Pescatello LS, Franklin BA, Fagard R, Farquhar WB, Kelley GA, Ray CA (2004) American College of Sports Medicine position stand. Exercise and hypertension. *Med Sci Sports Exerc* 36(3):533–553. doi: 00005768–200403000–00025 [pii]
- Pirnay F, Deroanne R, Petit JM (1970) Maximal oxygen consumption in a hot environment. *J Appl Physiol* 28(5):642–645. <https://doi.org/10.1152/jappl.1970.28.5.642>
- Ramanathan NL (1964) A new weighting system for mean surface temperature of the human body. *J Appl Physiol* 19:531–533
- Roddie IC, Shepherd JT (1956) The blood flow through the hand during local heating, release of sympathetic vasomotor tone by indirect heating, and a combination of both. *J Physiol* 131(3):657–664
- Senitko AN, Charkoudian N, Halliwill JR (2002) Influence of endurance exercise training status and gender on postexercise hypotension. *J Appl Physiol* 92(6):2368–2374. <https://doi.org/10.1152/japplphysiol.00020.2002>
- Serwah N, Marino FE (2006) The combined effects of hydration and exercise heat stress on choice reaction time. *J Sci Med Sport* 9(1–2):157–164. <https://doi.org/10.1016/j.jsams.2006.03.006>
- Swain DP (2000) Energy cost calculations for exercise prescription: an update. *Sports Med* 30(1):17–22
- Task-Force (1996) Heart rate variability: standards of measurement, physiological interpretation and clinical use. Task Force of the European Society of Cardiology and the North American Society of Pacing and Electrophysiology. *Circulation* 93(5):1043–1065
- Topouchian JA, El Assaad MA, Orobinskaia LV, El Feghali RN, Asmar RG (2006) Validation of two automatic devices for self-measurement of blood pressure according to the International Protocol of the European Society of Hypertension: the Omron M6 (HEM-7001-E) and the Omron R7 (HEM 637-IT). *Blood Press Monit* 11(3):165–171. <https://doi.org/10.1097/01.mbp.0000209078.17246.34>
- Whelton PK, Carey RM, Aronow WS, Casey DE, Jr., Collins KJ, Denison Himmelfarb C, DePalma SM, Gidding S, Jamerson KA, Jones DW, MacLaughlin EJ, Muntner P, Ovbigele B, Smith SC, Jr., Spencer CC, Stafford RS, Taler SJ, Thomas RJ, Williams KA, Sr., Williamson JD, Wright JT, Jr. (2018) 2017 ACC/AHA/AAPA/ABC/ACPM/AGS/APhA/ASH/ASPC/NMA/PCNA guideline for the prevention, detection, evaluation, and management of high blood pressure in adults: executive summary: a report of the American College of Cardiology/American Heart Association Task Force on Clinical Practice Guidelines. *J Am Soc Hypertens* 12 (8):579 e571–579 e573. <https://doi.org/10.1016/j.jash.2018.06.010>
- Wingo JE, Lafrenz AJ, Ganio MS, Edwards GL, Cureton KJ (2005) Cardiovascular drift is related to reduced maximal oxygen uptake during heat stress. *Med Sci Sports Exerc* 37 (2):248–255. doi: 00005768-200502000-00011

Publisher's Note Springer Nature remains neutral with regard to jurisdictional claims in published maps and institutional affiliations.