



## LJMU Research Online

**Shubbar, AAF, Sadique, MM, Nasr, MS, Al-Khafaji, ZS and Hashim, KS**

**The impact of grinding time on properties of cement mortar incorporated high volume waste paper sludge ash**

<http://researchonline.ljmu.ac.uk/id/eprint/14176/>

### Article

**Citation** (please note it is advisable to refer to the publisher's version if you intend to cite from this work)

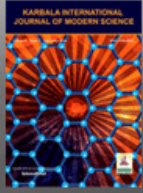
**Shubbar, AAF, Sadique, MM, Nasr, MS, Al-Khafaji, ZS and Hashim, KS (2020) The impact of grinding time on properties of cement mortar incorporated high volume waste paper sludge ash. Karbala International Journal of Modern Science. 6 (4). ISSN 2405-609X**

LJMU has developed **LJMU Research Online** for users to access the research output of the University more effectively. Copyright © and Moral Rights for the papers on this site are retained by the individual authors and/or other copyright owners. Users may download and/or print one copy of any article(s) in LJMU Research Online to facilitate their private study or for non-commercial research. You may not engage in further distribution of the material or use it for any profit-making activities or any commercial gain.

The version presented here may differ from the published version or from the version of the record. Please see the repository URL above for details on accessing the published version and note that access may require a subscription.

For more information please contact [researchonline@ljmu.ac.uk](mailto:researchonline@ljmu.ac.uk)

<http://researchonline.ljmu.ac.uk/>



## The impact of grinding time on properties of cement mortar incorporated high volume waste paper sludge ash

Ali A. Shubbar

*Department of Civil Engineering, Liverpool John Moores University, A.A.SHUBBAR@2014.LJMU.AC.UK*

Monower Sadique

*Department of Civil Engineering, Liverpool John Moores University, m.m.sadique@ljmu.ac.uk*

Mohammed S. Nasr

*Babylon Technical Institute, Al-Furat Al-Awsat Technical University, msn\_alar@yaho.com*

Zainab S. Al-Khafaji

*Department of Civil Engineering, Al- Mustaqbal University College, zainabcivil90@gmail.com*

Khalid S. Hashim

*Department of Civil Engineering, Liverpool John Moores University, k.s.hashim@ljmu.ac.uk*

Follow this and additional works at: <https://kijoms.uokerbala.edu.iq/home>



Part of the [Civil Engineering Commons](#)

### Recommended Citation

Shubbar, Ali A.; Sadique, Monower; Nasr, Mohammed S.; Al-Khafaji, Zainab S.; and Hashim, Khalid S. (2020) "The impact of grinding time on properties of cement mortar incorporated high volume waste paper sludge ash," *Karbala International Journal of Modern Science*: Vol. 6 : Iss. 4 , Article 7.

Available at: <https://doi.org/10.33640/2405-609X.2149>

This Research Paper is brought to you for free and open access by Karbala International Journal of Modern Science. It has been accepted for inclusion in Karbala International Journal of Modern Science by an authorized editor of Karbala International Journal of Modern Science.



---

# The impact of grinding time on properties of cement mortar incorporated high volume waste paper sludge ash

## Abstract

Cement is considered a base material in preparing blending mixtures that applying in various projects in the civil engineering field. Nevertheless, the cement production process cause indubitable negative environmental influences such as emitting CO<sub>2</sub>. The production of cement produces around 7% of the global CO<sub>2</sub> emissions. Thus, searching for alternate binders in building processes to minimise or substitute cement has been one of the social problems. A by-product or waste products are among the potential alternatives to the mentioned problem. The present investigation involves the consumption of paper sludge ash (PSA) waste as cement replacement to produce environmentally friendly, cementitious material. Limited studies were addressed the PSA grinding time impact on mortar or concrete properties. Moreover, limited studies replaced the cement with high volume of PSA. Therefore, during this study, the effect of grinding time and replacement level (up to 50%) of the PSA on the surface electrical resistivity and compressive strength of mortar were investigated. Three grinding periods (in addition to without grinding), two replacement levels and three testing ages were considered. The results indicated that grinding the PSA for 10 minutes and use it to replace up to 50% of the cement content have similar mechanical and durability performance to ordinary Portland cement after 28 curing days. This innovative binder will also cause a major difference in decreasing the building materials cost and CO<sub>2</sub> emissions.

## Keywords

Cement replacement, paper sludge ash, compressive strength, durability, grinding time.

## Creative Commons License



This work is licensed under a [Creative Commons Attribution-Noncommercial-No Derivative Works 4.0 License](https://creativecommons.org/licenses/by-nc-nd/4.0/).

## Cover Page Footnote

The laboratory supporting for this project provided by Liverpool John Moors University, United Kingdom is acknowledged gratefully.

## 1. Introduction

The global population increase coupled with the present technological and industrial progress has forced a great need for urban buildings, which accordingly led to increasing the need for cement worldwide [1,2]. Cement is one of the basic materials in different applications [3–5]. However, the cement industry is characterised by a high energy consumption [6,7] as well as high greenhouse gases emissions [8–11]. The cement industry is currently produced around 7% of carbon dioxide emissions worldwide [12–14]. So, it becomes urgent to search for alternatives to cement to reduce this environmental impact [15]. The reuse of waste materials rather than disposal in landfills can be considered an economical and valuable solution to this issue [16–19].

Otherwise, large quantities of waste are produced annually from the pulp and paper industry [20]. The paper and pulp industry in Europe affects the environment in terms of producing about 11 tonnes of waste paper sludge annually [21,22]. Besides, the management of this waste in some countries such as America and Australia has led to increased costs in this sector as a result of the increase in the size of landfills necessary for their storage [23]. According to Frías et al. [24], the waste transformation process of PSA starts with the transformation of waste paper into an aqueous suspension that mainly consist of fibres. During this initial process any undesirable materials are removed by various process of cleaning. The next step in the transformation process is the de-inking of the produced paper from the first step using the process of froth flotation and the produced material called as de-inked sludge. In order to reduce its volume, waste paper sludge is incinerated and then buried in landfills, as its effective reuse has not been significantly promoted [25]. By incinerating papers, paper sludge ash (PSA) waste is produced. PSA could be added to cement mixtures as supplementary cementitious material as a result of its pozzolanic properties [21,26] and cementitious characteristic [26,27]. The feedstock and the composition conditions have played an important effect on the final composition of PSA, however, it mainly comprises CaO, SiO<sub>2</sub> and Al<sub>2</sub>O<sub>3</sub> [27,28].

Several studies addressed the use of PSA as cement replacing materials. Fauzi et al. [29] explored the impact of replacing cement with PSA on recycled aggregate concrete. Three replacement ratios of cement with PSA (5, 10 and 15% by weight) and

coarse aggregate with recycled concrete aggregate (RCA) (25% and 50% by volume) were considered. Results demonstrated that the highest enhancement in compressive strength compared with the reference mix (without replacement) was achieved for a mix containing 50% RCA and 5% PSA. Sharipudin et al. [30] explored the impact of using PSA and fine recycled concrete aggregate (FRCA) on the properties of lightweight foam concrete (LWC) with density ranges between 1400 and 1800 kg/m<sup>3</sup>. The replacement proportions of PSA were 5%–30%. Results showed that PSA causes a decrease in the compressive strength of LWC. Mistry and Parolkar [31] investigated the effect of replacing cement with different percentages (5%, 10%, 15% and 20%) of PSA. Results indicated that the PSA could be added as a cement replacement up to 5% (by weight). Similar findings were recorded by Kumar and Rani [32]. Bui et al. [26] explored the impact of PSA and industrial by-products on the durability and mechanical features of recycled aggregate concrete (RAC). Results indicated that PSA enhanced the mechanical characteristics and acid resistance of RAC. The optimum performance of PSA in 100% RAC was 5%.

According to the above, the PSA using as a partial alternative to cement is a worthy solution in terms of decreasing the content of cement in concrete or mortar (and thus reducing the global pollution caused by the cement industry) as well as reducing pollution resulting from the disposal of paper sludge waste in landfills by converting it from useless material to a useful one. Few studies have discussed the effect of grinding time of PSA on mortar properties. Also, limited studies have used high percentages to replace cement with PSA. Therefore, this research aims to explore the impact of three grinding times and two replacement percentages (up to 50% by weight of cement) of PSA on the durability and mechanical characteristics of cement mortar.

## 2. Methodology and materials

The experimental program of this study is presented in Fig. 1 and detailed in the following sections.

### 2.1. Materials

#### 2.1.1. Binder materials

The binder materials utilised in this project were Portland cement kind CEM-II/A/LL 32.5-N and Paper

Sludge Ash (PSA). CEMEX, Warwickshire, United Kingdom has provided the cement in this study while the PSA has been gained from Aylesford Newsprint Ltd, Kent, United Kingdom. The chemical compositions of binder materials were identified using Shimadzu EDX-720. Additionally, the morphology of the binder materials was identified by the Scanning Electronic Microscopy (SEM) test.

### 2.1.2. Fine aggregate

The fine aggregate utilised in this work was the building sand passing 3.35 mm IS sieve. The grading of the used sand is demonstrated in Fig. 2.

### 2.1.3. Water

Water from tap was utilised in this research for all mixes.

## 2.2. Mixing proportions

In this research, the PSA with different proportions and various grinding times was utilised for replacing the cement partially in the cement mortar preparing. Details of the mixing proportions of the investigated parameters are presented in Table 1. During this research, the proportion of sand (fine aggregate) to binder (S/B) was 2.5 whereas the proportion of water/binder (W/B) was adjusted to obtain required workability for every mix. A similar procedure was adopted by previous works [33,34]. The abbreviation “S” in S/

B ratio refers to the sand while “B” refers to total binder (cement + PSA).

### 2.3. Specimens' preparation

The dry materials (OPC, PSA and sand) required in the production of the mortars were firstly mixed for 3 min utilising Hobart N50-110 mixer. Then, adding the water to the mixtures and the wet mix was mixed for additional 3 min. The wet mix was then poured in the prism moulds with (4 x 4 x 16) cm as whole dimensions or cylindrical moulds that have a 20 cm and 10 cm for length and diameter, respectively. The samples were removed from the moulds after a day from casting time and placed in water tank at the normal temperature of the lab (around 20 °C) until the testing time.

### 2.4. Program of testing

For evaluating the durability and mechanical features of the new mixtures, surface electrical resistivity and compressive strength tests were conducted. The compressive strength was conducted using the prism moulds according to BS EN 196-1 [35] while the surface electrical resistivity was conducted using the cylindrical moulds according to AASHTO T 358 [36]. For each mixing proportions and each test, three samples were tested after 3, 7 and 28 curing days.

## 3. Discussion for obtained results

### 3.1. Materials characterization

According to Table 2, the PSA has comparable content of both CaO% and SiO<sub>2</sub>% relative to OPC. According to the BS EN 197–1:2000 [37], the cement should have a minimum of 67% of CaO + SiO<sub>2</sub>, the ratio of CaO/SiO<sub>2</sub> should be at least 2 along with a magnesium content of less than 5%. According to Table 2, the PSA achieved all the rudiments and therefore, PSA possess both self-cementing and pozzolanic reactivity that could create additional C–S–H gel upon blended with OPC according to Ref. [38].

SEM images of the OPC and PSA powder in their dry states are presented in Fig. 3. The imaging of SEM is deemed among the most successful microanalysis methods, which can be utilised to evaluate the binder materials' morphology. The shape of the particles of the raw materials has an influence on the hardened and fresh characteristics of the produced materials, thus the

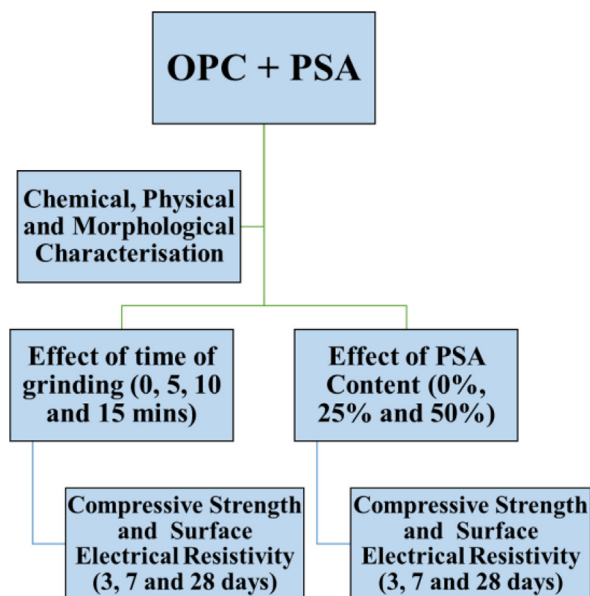


Fig. 1. Schematic of the experimental program.

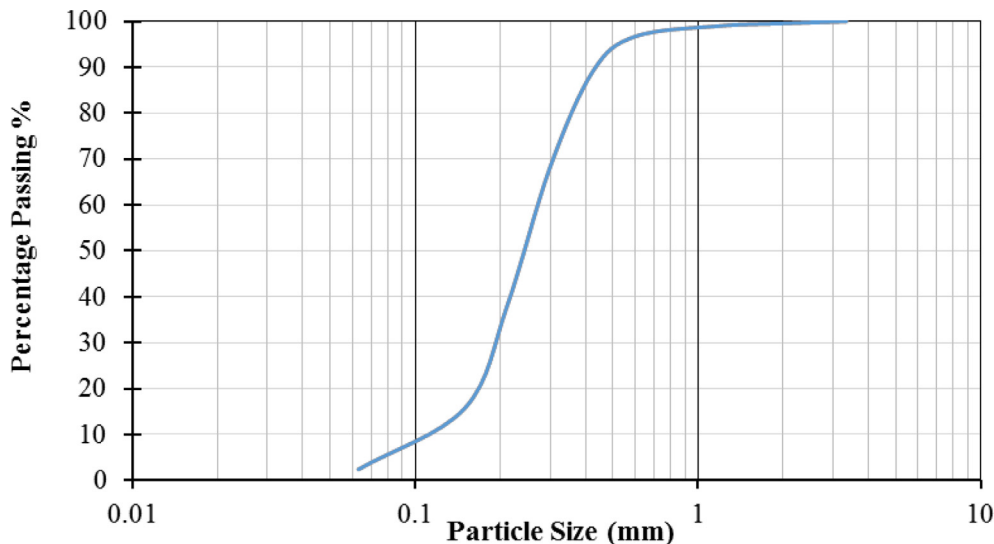


Fig. 2. Graph of size distribution for Sand Particles.

images of SEM for raw materials can aid to elucidate the behaviour of the materials, when blended to prepare a new cementitious material [39]. Fig. 3 illustrated that the OPC has angular and flaky shape particles, while the PSA has coagulated particles with irregular shapes that could reduce the workability due to the absorption of more liquid by the high porosity with large open zones [40].

### 3.2. Compressive strength

The impact of PSA content and time of grinding of the PSA on the performance of compressive strength cement mortars are demonstrated in Fig. 4. Fig. 4 illustrated that the compressive strength of all prepared mixes improved with increasing the curing period. Fig. 4 also showed that for the same grinding time, increase the amount of PSA in the mix resulted in decreased compressive strength at all ages of curing. This could be due to the higher proportion of W/B for

mixture with 50% PSA relative to that with 25% PSA that resulted in increasing the porosity of the mixture [41].

During this research, the technique of grinding was employed for increasing the PSA particles fineness that in turns could enhance the mortars compressive strength. The time of grinding was in the range between 0 and 15 min. The main reasons of not increasing the period of grinding more 15 min are to prevent agglomeration that negatively impact the performance of the ground material and also taking into consideration the sustainability of the final product [42]. As can be seen from Fig. 4 that for both levels of replacement, increasing the period of grinding resulted in enhanced compressive strength. This could be due to the fact that increasing the grinding time, increases the fineness of the PSA that in turns resulted in improving the compressive strength [43]. According to Fig. 4, grinding the PSA for 5 min for mixtures with 25% PSA resulted in similar compressive strength of the reference mix. Additionally, after 28 curing days, there was an enhancement in the compressive strength for mixtures incorporated 25% PSA relative to the control mixture by about 9% and 12% after 10 min and 15 min of grinding respectively. This could be due to the continuity of the hydration reaction as more fineness materials provided more surface area to boost the hydration reaction as reported by Sun et al. [44]. On the other hand, the utilisation of 50% PSA resulted in lower compressive strength at all specified ages of curing and for all times of grinding. Furthermore, the

Table 1  
Mixing ratios of all mixtures.

Mix ID	OPC (%)	PSA (%)	Grinding time (min)	S/B	W/B
Control	100	0	0	2.5	0.50
M25T0	75	25	0	2.5	0.50
M25T5	75	25	5	2.5	0.50
M25T10	75	25	10	2.5	0.50
M25T15	75	25	15	2.5	0.50
M50T0	50	50	0	2.5	0.55
M50T5	50	50	5	2.5	0.55
M50T10	50	50	10	2.5	0.55
M50T15	50	50	15	2.5	0.55



Table 2  
OPC and PSA chemical analysis.

Composite	OPC	PSA
CaO %	65.21	65.03
SiO <sub>2</sub> %	24.56	24.58
Al <sub>2</sub> O <sub>3</sub> %	1.70	2.15
Fe <sub>2</sub> O <sub>3</sub> %	1.64	–
MgO %	1.30	2.60
Na <sub>2</sub> O %	1.34	1.71
K <sub>2</sub> O %	0.82	0.27
SO <sub>3</sub> %	2.62	0.36
TiO <sub>2</sub> %	–	0.46
CaO + SiO <sub>2</sub> ≥ 67%	89.77	89.61
(SiO <sub>2</sub> +Al <sub>2</sub> O <sub>3</sub> + Fe <sub>2</sub> O <sub>3</sub> ) %	27.9	26.73
CaO/SiO <sub>2</sub> ≥ 2	2.66	2.65
LOI %	0.28	4.50
pH	13.4	12.86

replacement of cement with 50% ground PSA for 15 min has shown 91% of the reference mix compressive strength after 28 curing days. This reduction in the compressive strength of mortar containing a large amount of PSA (50%) may be due to the slight change in strength with time as a result to the presence of large quantities of calcium hydroxide resulting from the hydration of CaO (which is present in a large amount) in paper waste [26,45].

### 3.3. Surface electrical resistivity

The surface electrical resistivity results of all the investigated mixtures are illustrated in Fig. 5. As illustrated in Fig. 5, the surface electrical resistivity of all mixtures improved with increasing the curing age. This enhancement in the surface electrical resistivity means that the investigated cement mortars are more

resistant to chloride penetration with increase the curing age [46–49].

Fig. 5 also shows that increasing the grinding times for both levels of replacement resulted in improved surface electrical resistivity. This can be resulting from the higher packing density that led to fewer voids and the formation of denser microstructure [48,50,51]. At all selected curing ages, the results showed that grinding the PSA for 10 min was sufficient to provide comparable performance to the control mixture for both levels of replacement. In addition, the results showed that the average electrical resistivity values of the mortar containing 25% PSA (at a corresponding grinding period) were higher than that containing 50% PSA, which indicates a more dense microstructure and less void percentage.

According to AASHTO T 358 [36] classification, the surface electrical resistivity is directly linked with the chloride penetration. Therefore, the obtained values from the surface electrical resistivity tests were compared with the chloride penetration categorisation for evaluating the impact of the presence of PSA with different replacement levels and different grinding time on the durability of the investigated mortars. At 3 curing days, the mixtures M25T0, M50T0 and M50T5 have illustrated a moderate chloride ion penetrability while all other mixtures have shown a low chloride ion penetrability. After 7 curing days, all the selected mixes have illustrated a low chloride ion penetrability. Moving to the age of 28 days, the results illustrated that replacing 25% of cement by PSA with a minimum grinding time of 5 min was sufficient to provide mortars with a very low chloride ion penetrability while a minimum of 10 min of grinding was needed for mixtures incorporated 50% PSA. In summary, the results

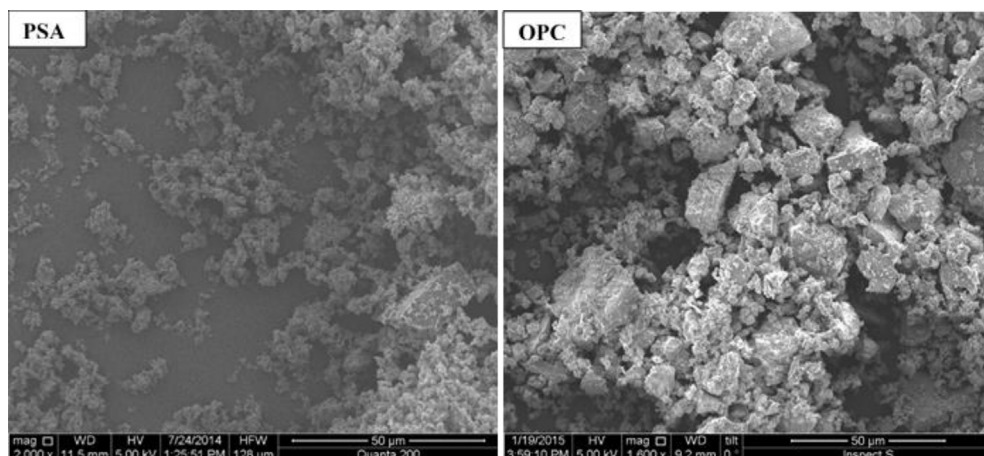


Fig. 3. The images of SEM for binder materials (dry powder).

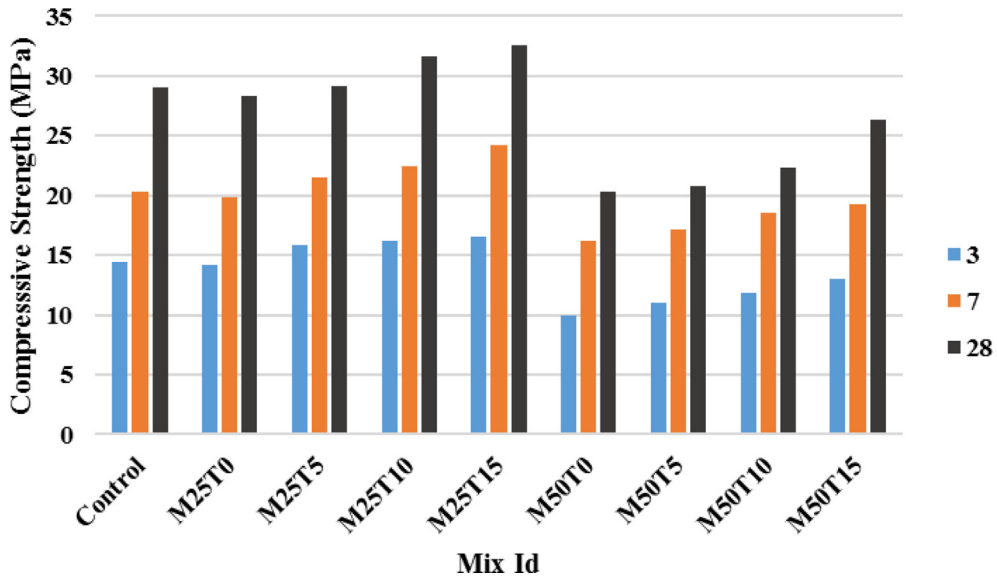


Fig. 4. The developments in compressive strength of various blends.

indicated that the durability of the mortars incorporated PSA was very similar to that of the control mixtures at all selected curing ages.

**4. Conclusions**

This research was carried out with the aim of investigating the effect of grinding time of PSA as a material to partially replacing the cement on the durability and mechanical performance of mortar. According to the achieved results, it could summarised that:

- The increase in the curing period led to enhance durability and compressive strength of all mixes.
- At all curing ages, samples incorporated 25% PSA showed higher surface electrical resistivity and compressive strength relative to samples incorporated 50% PSA, regardless of the time of grinding.
- For different levels of PSA replacement, increasing the grinding time resulted in enhanced surface electrical resistivity and compressive strength.
- Replacing the cement with up to 50% PSA with a minimum grinding time of 10 min was sufficient to provide comparable durability and mechanical

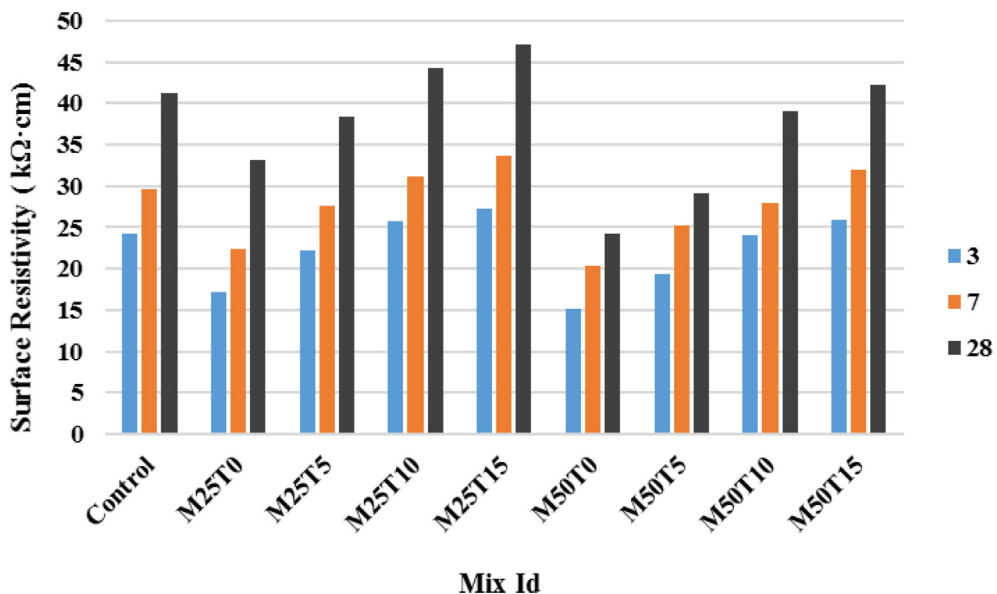


Fig. 5. Surface electrical resistivity developments of different blends.



performance relative to control mixture. Such replacement could considerably contribute to decrease the cement usage and content that could notably aids in decreasing the emitted CO<sub>2</sub> from the cement manufacturing.

For future investigations, authors recommended the utilization of different grinding aids [52] such as sodium sulfate and sodium carbonate [53], wet grinding [54], cooking oil [55] and cane molasses [56] to improve the mechanical and durability performance of PSA mortars. Additionally, mechanical hardness properties [57–64] along with more structural characterization such as X-ray Diffraction (XRD) and Transmission Electron Microscopy (TEM) are suggested to better understand the obtained results [65–69].

### Declaration of competing interest

Authors declare that there is no conflict of interest.

### Acknowledgments

The laboratory supporting for this project provided by Liverpool John Moors University, United Kingdom is acknowledged gratefully.

### References

- [1] A. V Alves, T.F. Vieira, J. De Brito, J.R. Correia, Mechanical properties of structural concrete with fine recycled ceramic aggregates, *Construct. Build. Mater.* 64 (2014) 103–113.
- [2] M.S. Nasr, T.H. Hussain, H.Z. Kubba, A.A. Shubbar, Influence of using high volume fraction of silica fume on mechanical and durability properties of cement mortar, *J. Eng. Sci. Technol.* 15 (2020) 2492–2506.
- [3] A.R.G. Azevedo, D. Cecchin, D.F. Carmo, F.C. Silva, C.M.O. Campos, T.G. Shtrucka, M.T. Marvila, S.N. Monteiro, Analysis of the compactness and properties of the hardened state of mortars with recycling of construction and demolition waste (CDW), *J. Mater. Res. Technol.* 9 (2020) 5942–5952.
- [4] M.T. Marvila, A.R.G. Azevedo, S.N. Monteiro, Verification of the application potential of the mathematical models of lyse, abrams and molinari in mortars based on cement and lime, *J. Mater. Res. Technol.* 9 (2020) 7327–7334.
- [5] Z.A. Hasan, M.S. Nasr, M.K. Abed, Combined effect of silica fume, and glass and ceramic waste on properties of high strength mortar reinforced with hybrid fibers, *Int. Rev. Civ. Eng.* 10 (2019) 267–273.
- [6] A. Atmaca, R. Yumrutaş, Analysis of the parameters affecting energy consumption of a rotary kiln in cement industry, *Appl. Therm. Eng.* 66 (2014) 435–444.
- [7] L.F. Amaral, G.C.G. Delaqua, M. Nicolite, M.T. Marvila, A.R.G. de Azevedo, J. Alexandre, C.M.F. Vieira, S.N. Monteiro, Eco-friendly mortars with addition of ornamental stone waste-A mathematical model approach for granulometric optimization, *J. Clean. Prod.* 248 (2020) 119283.
- [8] A.A. Shubbar, H. Jafer, M. Abdulredha, Z.S. Al-Khafaji, M.S. Nasr, Z. Al Masoodi, M. Sadique, Properties of cement mortar incorporated high volume fraction of GGBFS and CKD from 1 day to 550 days, *J. Build. Eng.* 30 (2020) 101327.
- [9] F. Pacheco-Torgal, S. Jalali, Compressive strength and durability properties of ceramic wastes based concrete, *Mater. Struct.* 44 (2011) 155–167.
- [10] A.R.G. de Azevedo, J. Alexandre, G. de C. Xavier, L.G. Pedroti, Recycling paper industry effluent sludge for use in mortars: a sustainability perspective, *J. Clean. Prod.* 192 (2018) 335–346.
- [11] A.A. Shubbar, M. Sadique, P. Kot, W. Atherton, Future of clay-based construction materials—A review, *Construct. Build. Mater.* 210 (2019) 172–187.
- [12] H.S. Majdi, A.A. Shubbar, M.S. Nasr, Z.S. Al-Khafaji, H. Jafer, M. Abdulredha, Z. Al Masoodi, M. Sadique, K. Hashim, Experimental data on compressive strength and ultrasonic pulse velocity properties of sustainable mortar made with high content of GGBFS and CKD combinations, *Data Br* 31 (2020) 105961.
- [13] M. Abed, M. Nasr, Z. Hasan, Effect of silica fume/binder ratio on compressive strength development of reactive powder concrete under two curing systems, in: *MATEC Web Conf.* vol. 162, EDP Sciences, 2018, 02022.
- [14] M.S. Nasr, A.A. Shubbar, Z.A.-A.R. Abed, M.S. Ibrahim, Properties of eco-friendly cement mortar contained recycled materials from different sources, *J. Build. Eng.* 31 (2020) 101444.
- [15] A.A. Shubbar, D. Al-Jumeily, A.J. Aljaaf, M. Alyafei, M. Sadique, J. Mustafina, Investigating the mechanical and durability performance of cement mortar incorporated modified fly ash and ground granulated blast furnace slag as cement replacement materials, in: *2019 12th Int. Conf. Dev. ESsystems Eng., IEEE*, 2019, pp. 434–439.
- [16] H. Jang, Y.-T. Lim, J.-H. Kang, S. So, H. So, Influence of calcination and cooling conditions on pozzolanic reactivity of paper mill sludge, *Construct. Build. Mater.* 166 (2018) 257–270.
- [17] B.A. Tayeh, D.M. AlSaffar, L.K. Askar, A.I. Jubeh, Effect of incorporating pottery and bottom ash as partial replacement of cement, *Karbala Int. J. Mod. Sci.* 5 (2019) 270–279.
- [18] A.R.G. de Azevedo, J. Alexandre, L.S.P. Pessanha, R. da St Manhães, J. de Brito, M.T. Marvila, Characterizing the paper industry sludge for environmentally-safe disposal, *Waste Manag.* 95 (2019) 43–52.
- [19] I.H. Nayel, S.K. Burhan, M.S. Nasr, Characterisation of prepared rice husk ash and its effects on strength development in recycled aggregate concrete, in: *IOP Conf. Ser. Mater. Sci. Eng.* vol. 433, Institute of Physics Publishing, 2018, p. 12009.
- [20] A.R.G. de Azevedo, J. Alexandre, M.T. Marvila, G. de Castro Xavier, S.N. Monteiro, L.G. Pedroti, Technological and environmental comparative of the processing of primary sludge waste from paper industry for mortar, *J. Clean. Prod.* 249 (2020) 119336.

- [21] V. Ferrándiz-Mas, T. Bond, E. García-Alcocel, C.R. Cheeseman, Lightweight mortars containing expanded polystyrene and paper sludge ash, *Construct. Build. Mater.* 61 (2014) 285–292.
- [22] M.C. Monte, E. Fuente, A. Blanco, C. Negro, Waste management from pulp and paper production in the European Union, *Waste Manag.* 29 (2009) 293–308.
- [23] A.R.G. Azevedo, T.M. Marvila, W.J. Fernandes, J. Alexandre, G.C. Xavier, E.B. Zanelato, N.A. Cerqueira, L.G. Pedroti, B.C. Mendes, Assessing the potential of sludge generated by the pulp and paper industry in assembling locking blocks, *J. Build. Eng.* 23 (2019) 334–340.
- [24] M. Frías, I. Vegas, R.V. de la Villa, R.G. Giménez, Recycling of waste paper sludge in cements: characterization and behavior of new eco-efficient matrices, in: *Integr. Waste Manag. II*, InTech, 2011.
- [25] N. Kinoshita, T. Kawaguchi, T. Matsuo, M. Honda, H. Yasuhara, Evaluation of performance of mortar using granulated paper sludge ash for precast material, *J. MMIJ.* 128 (2012) 611–619.
- [26] N.K. Bui, T. Satomi, H. Takahashi, Influence of industrial by-products and waste paper sludge ash on properties of recycled aggregate concrete, *J. Clean. Prod.* 214 (2019) 403–418.
- [27] H.S. Wong, R. Barakat, A. Alhilali, M. Saleh, C.R. Cheeseman, Hydrophobic concrete using waste paper sludge ash, *Cement Concr. Res.* 70 (2015) 9–20.
- [28] J.P. Azar, M. Najarchi, B. Sanaati, M.M. Najafizadeh, S.M. Mirhosseini, The experimental assessment of the effect of paper waste ash and silica fume on improvement of concrete behavior, *KSCE J. Civ. Eng.* 23 (2019) 4503–4515.
- [29] M.A. Fauzi, H. Sulaiman, A.R.M. Ridzuan, A.N. Azmi, The effect of recycled aggregate concrete incorporating waste paper sludge ash as partial replacement of cement, in: *AIP Conf. Proc. vol. 1774*, AIP Publishing LLC, 2016, p. 30007.
- [30] S.S. Sharipudin, A.R.M. Ridzuan, R.N.H.R.M. Noor, A.C. Hassan, Strength properties of lightweight foamed concrete incorporating waste paper sludge ash and recycled concrete aggregate, in: *Reg. Conf. Sci. Technol. Soc. Sci. (RCSTSS 2014)*, Springer, 2016, pp. 3–15.
- [31] H.K. Mistry, R. Parolkar, A study on behavior of waste paper sludge ash and quartz sand as a partial replacement of cement and fine aggregate, *Int. J. Eng. Sci. Math.* 6 (2017) 217–224.
- [32] A. Kumar, D. Rani, Performance of concrete using paper sludge ash and foundry sand, *Int. J. Innov. Res. Sci. Eng. Technol.* 5 (2016) 171–176.
- [33] A.A. Shubbar, H. Jafer, A. Dulaimi, K. Hashim, W. Atherton, M. Sadique, The development of a low carbon binder produced from the ternary blending of cement, ground granulated blast furnace slag and high calcium fly ash: an experimental and statistical approach, *Construct. Build. Mater.* 187 (2018) 1051–1060.
- [34] P. Chindaprasirt, S. Homwuttivong, C. Jaturapitakkul, Strength and water permeability of concrete containing palm oil fuel ash and rice husk–bark ash, *Construct. Build. Mater.* 21 (2007) 1492–1499.
- [35] BS EN 196–1, Methods of Testing Cement. Determination of strength, British Standards Institution-BSI and CEN European Committee for Standardization, 2005.
- [36] AASHTO T 358-17, Standard Method of Test for Surface Resistivity Indication of Concrete's, 2017.
- [37] BS EN 197-1, Cement, Composition, Specifications and Conformity Criteria for Common Cements, British Standards Institution-BSI and CEN European Committee for Standardization, London, England: British, 2011.
- [38] M. Mavroulidou, G. Boulouki, C. Unsworth, Incorporating waste paper sludge ash as partial cement replacement in concrete, in: *Proceeding 13th Int. Conf. Environ. Sci. Technol.*, 2013, pp. 5–7.
- [39] O.K. Wattimena, D. Hardjito Antoni, A review on the effect of fly ash characteristics and their variations on the synthesis of fly ash based geopolymer, in: *AIP Conf. Proc. 1887*, AIP Publishing LLC, 2017, p. 20041.
- [40] H. Jafer, W. Atherton, M. Sadique, F. Ruddock, E. Loffill, Stabilisation of soft soil using binary blending of high calcium fly ash and palm oil fuel ash, *Appl. Clay Sci.* 152 (2018) 323–332.
- [41] P.-C. Aitcin, The importance of the water–cement and water–binder ratios, in: *Sci. Technol. Concr. Admixtures*, Elsevier, 2016, pp. 3–13.
- [42] M. Sadique, H. Al Nageim, W. Atherton, L. Seton, N. Dempster, A new composite cementitious material for construction, *Construct. Build. Mater.* 35 (2012) 846–855.
- [43] O. Celik, E. Damcı, S. Pişkin, Characterization of fly ash and its effects on the compressive strength properties of Portland cement, *Indian J. Eng. Mater. Sci.* 15 (2008) 433–440.
- [44] H. Sun, B. Hohl, Y. Cao, C. Handwerker, T.S. Rushing, T.K. Cummins, J. Weiss, Jet mill grinding of portland cement, limestone, and fly ash: impact on particle size, hydration rate, and strength, *Cement Concr. Compos.* 44 (2013) 41–49.
- [45] J. Bai, A. Chaipanich, J.M. Kinuthia, M. O'farrell, B.B. Sabir, S. Wild, M.H. Lewis, Compressive strength and hydration of wastepaper sludge ash–ground granulated blastfurnace slag blended pastes, *Cement Concr. Res.* 33 (2003) 1189–1202.
- [46] J. Tanesi, A. Ardani, Surface Resistivity Test Evaluation as an Indicator of the Chloride Permeability of Concrete, Federal Highway Administration, United States, 2012.
- [47] H. Layssi, P. Ghods, A.R. Alizadeh, M. Salehi, Electrical resistivity of concrete, *Concr. Int.* 37 (2015) 41–46.
- [48] M. Zahedi, A.A. Ramezani pour, A.M. Ramezani pour, Evaluation of the mechanical properties and durability of cement mortars containing nanosilica and rice husk ash under chloride ion penetration, *Construct. Build. Mater.* 78 (2015) 354–361.
- [49] O. Sengul, Use of electrical resistivity as an indicator for durability, *Construct. Build. Mater.* 73 (2014) 434–441.
- [50] A. Islam, U.J. Alengaram, M.Z. Jumaat, I.I. Bashar, The development of compressive strength of ground granulated blast furnace slag–palm oil fuel ash–fly ash based geopolymer mortar, *Mater. Des.* 56 (2014) 833–841.
- [51] R.A. Hawileh, J.A. Abdalla, F. Fardmanesh, P. Shahsana, A. Khalili, Performance of reinforced concrete beams cast with different percentages of GGBS replacement to cement, *Arch. Civ. Mech. Eng.* 17 (2017) 511–519.
- [52] H. Li, X. Yang, Z. Jiang, Z. Suo, G. Zhang, J. Wu, L. Yu, Effect of different grinding aids on property of granulated blast furnace slag powder, *Mater. Struct.* 48 (2015) 3885–3893.
- [53] H. Tan, X. Deng, X. He, J. Zhang, X. Zhang, Y. Su, J. Yang, Compressive strength and hydration process of wet-grinded granulated blast-furnace slag activated by sodium sulfate and sodium carbonate, *Cement Concr. Compos.* 97 (2019) 387–398.
- [54] H. Tan, M. Li, X. He, Y. Su, J. Zhang, H. Pan, J. Yang, Y. Wang, Preparation for micro-lithium slag via wet grinding

- and its application as accelerator in Portland cement, *J. Clean. Prod.* 250 (2020) 119528.
- [55] H. Li, J. Zhao, Y. Huang, Z. Jiang, X. Yang, Z. Yang, Q. Chen, Investigation on the potential of waste cooking oil as a grinding aid in Portland cement, *J. Environ. Manag.* 184 (2016) 545–551.
- [56] H. Li, Z. Jiang, X. Yang, L. Yu, G. Zhang, J. Wu, X. Liu, Sustainable resource opportunity for cane molasses: use of cane molasses as a grinding aid in the production of Portland cement, *J. Clean. Prod.* 93 (2015) 56–64.
- [57] N. Pramanik, S. Bhattacharya, T. Rath, J. De, A. Adhikary, R.K. Basu, P.P. Kundu, Polyhydroxybutyrate-co-hydroxyvalerate copolymer modified graphite oxide based 3D scaffold for tissue engineering application, *Mater. Sci. Eng. C* 94 (2019) 534–546.
- [58] A.K. Bar, P. Kalita, M.K. Singh, G. Rajaraman, V. Chandrasekhar, Low-coordinate mononuclear lanthanide complexes as molecular nanomagnets, *Coord. Chem. Rev.* 367 (2018) 163–216.
- [59] A.K. Bar, C. Pichon, J.-P. Sutter, Magnetic anisotropy in two- to eight-coordinated transition–metal complexes: recent developments in molecular magnetism, *Coord. Chem. Rev.* 308 (2016) 346–380.
- [60] A.K. Bar, N. Gogoi, C. Pichon, V.M.L.D.P. Goli, M. Thlijeni, C. Duhayon, N. Suaud, N. Guihéry, A. Barra, S. Ramasesha, Pentagonal bipyramid FeII complexes: robust ising-spin units towards heteropolynuclear nanomagnets, *Chem. Eur. J.* 23 (2017) 4380–4396.
- [61] A.K. Bar, P. Kalita, J.-P. Sutter, V. Chandrasekhar, Pentagonal-bipyramid Ln (III) complexes exhibiting single-ion-magnet behavior: a rational synthetic approach for a rigid equatorial plane, *Inorg. Chem.* 57 (2018) 2398–2401.
- [62] S. Biswas, S. Das, S. Hossain, A.K. Bar, J. Sutter, V. Chandrasekhar, Tetranuclear lanthanide (III) complexes containing a square-grid core: synthesis, structure, and magnetism, *Eur. J. Inorg. Chem.* 2016 (2016) 4683–4692.
- [63] S. Khatua, A. Kumar Bar, S. Konar, Tuning proton conductivity by interstitial guest change in size-adjustable nanopores of a CuI-MOF: a potential platform for versatile proton carriers, *Chem. Eur. J.* 22 (2016) 16277–16285.
- [64] A. Chakraborty, J. Goura, P. Bag, A.K. Bar, J.-P. Sutter, V. Chandrasekhar, Windmill-shaped octanuclear Zn II/Ln III4 (Ln III= Dy, Tb, Ho) heterometallic ensembles supported by a tetraferrocene scaffold, *Dalton Trans.* 45 (2016) 17633–17643.
- [65] A.S. Das, M. Roy, D. Roy, S. Bhattacharya, P.M.G. Nambissan, Identification of defects in the transition metal oxide-doped glass nanocomposite  $xV_2O_5-(1-x)(0.05 MoO_3-0.95 ZnO)$  using positron annihilation spectroscopy and other techniques, *J. Non-Cryst. Solids* 482 (2018) 52–62.
- [66] A.S. Das, M. Roy, D. Roy, S. Bhattacharya, P.M.G. Nambissan, Defects characterization and study of amorphous phase formation in  $xV_2O_5-(1-x) Nd_2O_3$  binary glass nanocomposites using positron annihilation and correlated experimental techniques, *J. Alloys Compd.* 753 (2018) 748–760.
- [67] S. Bhattacharya, A. Acharya, D. Biswas, A.S. Das, L.S. Singh, Conductivity spectra of lithium ion conducting glassy ceramics, *Phys. B Condens. Matter* 546 (2018) 10–14.
- [68] A.S. Das, M. Roy, D. Biswas, R. Kundu, A. Acharya, D. Roy, S. Bhattacharya, Ac conductivity of transition metal oxide doped glassy nanocomposite systems: temperature and frequency dependency, *Mater. Res. Express* 5 (2018) 95201.
- [69] A.S. Das, M. Roy, D. Roy, T. Kar, S. Rath, S. Bhattacharya, Investigations of microstructure and Dc conductivity of  $V_2O_5-Nd_2O_3$  glass nanocomposites, *ChemistrySelect* 2 (2017) 11273–11280.