



## LJMU Research Online

**Guidorzi, C, Mundell, CG, Harrison, R, Margutti, R, Sudilovsky, V, Zauderer, BA, Kobayashi, S, Cucchiara, A, Melandri, A, Pandey, SB, Berger, E, Bersier, D, D'Elia, V, Gomboc, A, Greiner, J, Japelj, J, Kopač, D, Kumar, B, Malesani, D, Mottram, CJ, O'Brien, PT, Rau, A, Smith, RJ, Steele, IA, Tanvir, NR and Virgili, FJ**

**New constraints on gamma-ray burst jet geometry and relativistic shock physics**

<http://researchonline.ljmu.ac.uk/id/eprint/1478/>

### Article

**Citation** (please note it is advisable to refer to the publisher's version if you intend to cite from this work)

**Guidorzi, C, Mundell, CG, Harrison, R, Margutti, R, Sudilovsky, V, Zauderer, BA, Kobayashi, S, Cucchiara, A, Melandri, A, Pandey, SB, Berger, E, Bersier, D, D'Elia, V, Gomboc, A, Greiner, J, Japelj, J, Kopač, D, Kumar, B, Malesani, D, Mottram, CJ, O'Brien, PT, Rau, A, Smith, RJ, Steele, IA, Tanvir, NR and**

LJMU has developed **LJMU Research Online** for users to access the research output of the University more effectively. Copyright © and Moral Rights for the papers on this site are retained by the individual authors and/or other copyright owners. Users may download and/or print one copy of any article(s) in LJMU Research Online to facilitate their private study or for non-commercial research. You may not engage in further distribution of the material or use it for any profit-making activities or any commercial gain.

The version presented here may differ from the published version or from the version of the record. Please see the repository URL above for details on accessing the published version and note that access may require a subscription.

<http://researchonline.ljmu.ac.uk/>

For more information please contact [researchonline@ljmu.ac.uk](mailto:researchonline@ljmu.ac.uk)

<http://researchonline.ljmu.ac.uk/>

# New constraints on GRB jet geometry and relativistic shock physics

C. Guidorzi<sup>1\*</sup>, C. G. Mundell,<sup>2</sup> R. Harrison,<sup>2</sup> R. Margutti,<sup>3</sup> V. Sudilovsky,<sup>4</sup>  
 B. A. Zauderer,<sup>3</sup> S. Kobayashi,<sup>2</sup> A. Cucchiara,<sup>5</sup> A. Melandri,<sup>6</sup> S. B. Pandey,<sup>7</sup>  
 E. Berger,<sup>3</sup> D. Bersier,<sup>2</sup> V. D’Elia,<sup>8</sup> A. Gomboc,<sup>9,10</sup> J. Greiner,<sup>4</sup> J. Japelj,<sup>9</sup>  
 D. Kopač,<sup>9</sup> B. Kumar,<sup>7</sup> D. Malesani,<sup>11</sup> C. J. Mottram,<sup>2</sup> P. T. O’Brien,<sup>12</sup>  
 A. Rau,<sup>4</sup> R. J. Smith,<sup>2</sup> I. A. Steele,<sup>2</sup> N. R. Tanvir,<sup>12</sup> F. Virgili<sup>2</sup>

<sup>1</sup>Department of Physics and Earth Sciences, University of Ferrara, via Saragat 1, I-44122, Ferrara, Italy

<sup>2</sup>Astrophysics Research Institute, Liverpool John Moores University, IC2, Liverpool Science Park, 146 Brownlow Hill, Liverpool L3 5RF, UK

<sup>3</sup>Harvard-Smithsonian Center for Astrophysics, 60 Garden Street, Cambridge, MA 02138, USA

<sup>4</sup>Max-Planck-Institut für extraterrestrische Physik, Giessenbachstrasse 1, I-85748, Germany

<sup>5</sup>Department of Astronomy and Astrophysics, UCO/Lick Observatory, University of California, 1156 High Street, Santa Cruz, CA 95064, USA

<sup>6</sup>INAF – Osservatorio Astronomico di Brera, via E. Bianchi 46, I-23807 Merate (LC), Italy

<sup>7</sup>Aryabhata Research Institute of Observational Sciences, Manora Peak, Nainital, Uttarakhand, India, 263129

<sup>8</sup>ASI Science Data Center, via Galileo Galilei, I-00044, Frascati, Italy

<sup>9</sup>Faculty of Mathematics and Physics, University of Ljubljana, Jadranska 19, SI-1000 Ljubljana, Slovenia

<sup>10</sup>Centre of Excellence SPACE-SI, Aškerčeva cesta 12, SI-1000 Ljubljana, Slovenia

<sup>11</sup>Dark Cosmology Centre, Niels Bohr Institute, University of Copenhagen, Juliane Maries vej 30, DK-2100 København Ø, Denmark

<sup>12</sup>Department of Physics and Astronomy, University of Leicester, University Road, Leicester LE1 7RH, UK

19 November 2013

## ABSTRACT

We use high-quality, multi-band observations of *Swift* GRB 120404A, from  $\gamma$ -ray to radio frequencies, together with the new hydrodynamics code of van Eerten et al. (2012) to test the standard synchrotron shock model. The evolution of the radio and optical afterglow, with its prominent optical rebrightening at  $t_{\text{rest}} \sim 260\text{--}2600$  s, is remarkably well modelled by a decelerating jet viewed close to the jet edge, combined with some early re-energization of the shock. We thus constrain the geometry of the jet with half-opening and viewing angles of  $23^\circ$  and  $21^\circ$  respectively and suggest that wide jets viewed off-axis are more common in GRBs than previously thought. We also derive the fireball microphysics parameters  $\epsilon_B = 2.4 \times 10^{-4}$  and  $\epsilon_e = 9.3 \times 10^{-2}$  and a circumburst density of  $n = 240 \text{ cm}^{-3}$ . The ability to self-consistently model the microphysics parameters and jet geometry in this way offers an alternative to trying to identify elusive canonical jet breaks at late times. The mismatch between the observed and model-predicted X-ray fluxes is explained by the *local* rather than the global cooling approximation in the synchrotron radiation model, constraining the microphysics of particle acceleration taking place in a relativistic shock and, in turn, emphasising the need for a more realistic treatment of cooling in future developments of theoretical models. Finally, our interpretation of the optical peak as due to the passage of the forward shock synchrotron frequency highlights the importance of high quality multi-band data to prevent some optical peaks from being erroneously attributed to the onset of fireball deceleration.

**Key words:** gamma-rays: bursts — radiation mechanisms: nonthermal

## 1 INTRODUCTION

The observational picture of the gamma-ray burst (GRB) phenomenon has constantly been evolving during the last

\* E-mail:guidorzi@fe.infn.it

fifteen years since the discovery of the long-lived afterglow radiation in the aftermath of the prompt high-energy emission (see Gehrels & Mészáros 2012 for a recent review). The knowledge of the GRB host galaxies as well as of the circumburst environment properties has been providing important clues to characterise the stellar progenitors, to identify key factors such as metallicity (e.g., see Fynbo et al. 2012; Savaglio 2012 for recent reviews), especially whenever a possible associated supernova component cannot be observed due to distance constraints.

In the *Swift* and *Fermi* era, the phenomenology displayed across the electromagnetic spectrum by GRB afterglows appears to be more complex than predicted in the pre-*Swift* epoch (Melandri et al. 2008). In particular, clear-cut achromatic breaks in the light curves associated with the jet angle have turned out to be unexpectedly rare events (Racusin et al. 2009). Likewise, the unexpected paucity of early optical light curves with evidence for reverse shock (RS) emission (Roming et al. 2006) raised the issue of the magnetic energy density entrained in the ejecta as a possible explanation (Zhang & Kobayashi 2005) in addition to other alternatives (e.g., Mundell et al. 2007; Jin & Fan 2007; Melandri et al. 2010; Guidorzi et al. 2011).

Although in many cases fitting full data sets into a self-consistent description of the afterglow evolution proved very problematic (e.g., Covino et al. 2010; Gendre et al. 2010), overall the afterglow emission can be accounted for as synchrotron with possible Inverse Compton contributions by the electrons shocked by the GRB blast wave (e.g., Mészáros 2006), with occasional energy injection (e.g., Rossi et al. 2011) and/or the combination of geometric effects (e.g., Guidorzi et al. 2009; Krühler et al. 2009; Margutti et al. 2010).

In this paper we provide a self-consistent picture of the broadband data set we collected on GRB 120404A, spanning from radio to X-rays, within the first few days after the GRB itself. To this aim, we fitted the entire data set using the hydrodynamical code recently developed by van Eerten et al. (2012), which models the synchrotron emission from a relativistic fireball sweeping up homogeneous interstellar medium (ISM) within a uniform conical structure jet with sharp edge. The excellent quality of our data set, combined with the observed complex behaviour, represents a rigorous test for the model and offers the opportunity to strictly constrain the energetics, the geometry of the jet, and the microphysics parameters of the shocks. This is one of the first cases in which a realistic (i.e. based on realistic hydrodynamical simulations and not purely analytical) model is applied to a broadband high-quality data set of a GRB. We also present spectroscopic data of the optical afterglow which allowed us to measure its redshift.

Throughout the paper, times are given relative to the GRB trigger time of *Swift*/BAT, which corresponds to April 4, 2012, 12:51:02 UT. The convention  $F(\nu, t) \propto \nu^{-\beta} t^{-\alpha}$  is followed, where  $F$  is the flux density, the energy index  $\beta$  is related to the photon index by  $\Gamma = \beta + 1$ . We adopted the standard cosmological model:  $H_0 = 71 \text{ km s}^{-1} \text{ Mpc}^{-1}$ ,  $\Omega_\Lambda = 0.73$ ,  $\Omega_M = 0.27$  (Spergel et al. 2003).

All of the quoted errors are given at 90% confidence level for one interesting parameter ( $\Delta\chi^2 = 2.706$ ), unless stated otherwise.

## 2 OBSERVATIONS

GRB 120404A was detected and localised in real time with the *Swift* Burst Alert Telescope (BAT; Barthelmy et al. 2005) instrument (Stratta et al. 2012) with an accuracy of  $3'$ . The  $\gamma$ -ray prompt emission in the 15–150 keV energy band lasted about 50 s. A quick-look analysis gave a peak flux of  $(1.2 \pm 0.2) \text{ ph cm}^{-2} \text{ s}^{-1}$ , a fluence of about  $10^{-6} \text{ erg cm}^{-2}$ , and burst coordinates  $\alpha(\text{J2000}) = 15^{\text{h}}40^{\text{m}}00^{\text{s}}.4$ ,  $\delta(\text{J2000}) = +12^{\circ}52'57''$  with an error radius of  $1.2'$  (Ukwatta et al. 2012).

The *Swift* X-Ray Telescope (XRT; Burrows et al. 2005) began observing at 130 s and promptly found a bright, uncatalogued X-ray source within the BAT error circle. The X-ray source position was later refined using the XRT–UVOT alignment and matching UVOT field sources to the USNO-B1 catalogue, with burst coordinates  $\alpha(\text{J2000}) = 15^{\text{h}}40^{\text{m}}02^{\text{s}}.28$ ,  $\delta(\text{J2000}) = +12^{\circ}53'04''.9$  with an error radius of  $1''.6$  (Osborne et al. 2012).

The *Swift* Ultraviolet/Optical Telescope (UVOT; Roming et al. 2005) began observing at 139 s and from a 147-s exposure in the white filter found an optical candidate with magnitude  $19.43 \pm 0.12$  with coordinates  $\alpha(\text{J2000}) = 15^{\text{h}}40^{\text{m}}02^{\text{s}}.29$ ,  $\delta(\text{J2000}) = +12^{\circ}53'06''.3$  with an error radius of  $0''.65$  (Stratta et al. 2012; Breeveld & Stratta 2012).

The UVOT optical candidate was soon confirmed independently by the Faulkes Telescope North (FTN), which began observing 4 minutes after the GRB trigger time (Guidorzi et al. 2012). We measured the redshift of  $z = 2.876$  with Gemini-North about 1 hour after the burst upon the identification of several absorption lines (Cucchiara & Tanvir 2012); this value was later confirmed with the X-shooter instrument (Vernet et al. 2011) at the ESO Very Large Telescope (VLT), which observed at 16 hours post burst (D’Elia et al. 2012).

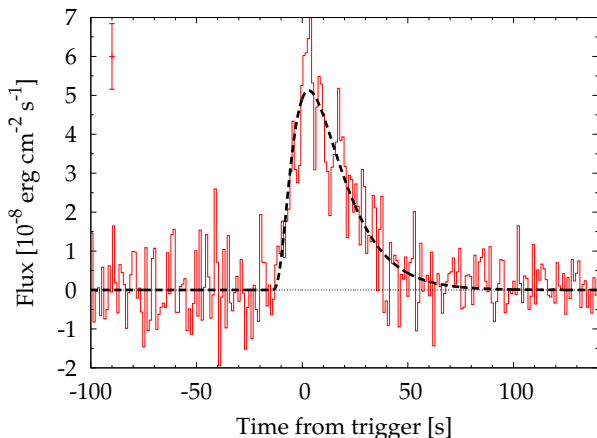
The optical afterglow was observed by a number of facilities: the FTN and the Faulkes Telescope South (FTS) jointly monitored it from 4 minutes to 5.5 hours with the *BVRi'* filters. The optical light curve exhibited a rebrightening which peaked around 40 minutes post burst with a magnitude of  $R = 16.9$ , as also noted by others (Tristram et al. 2012).

We kept monitoring the afterglow with the Gamma-Ray Burst Optical and Near-Infrared Detector (GROND; Greiner et al. 2008) which started simultaneous observations in *g'r'i'z'JHK* filters at 18.2 hours after the burst (Sudilovsky et al. 2012). We also collected data with the 1.04-m telescope at the Aryabhata Research Institute of observational sciences (ARIES) in Nainital, India, starting from 6.5 hours post GRB with *RI* filters (Kumar et al. 2012).

Finally, we discovered the radio counterpart with the Karl G. Jansky Very Large Array (VLA; Perley et al. 2011) at 22 GHz at 0.75 days at the position  $\alpha(\text{J2000}) = 15^{\text{h}}40^{\text{m}}02^{\text{s}}.28 (\pm 0.01)$ ,  $\delta(\text{J2000}) = +12^{\circ}53'06''.1 (\pm 0.1)$  with a flux density of  $(88 \pm 24) \mu\text{Jy}$  (Zauderer et al. 2012).

The Galactic reddening along the direction to the GRB is  $E_{B-V} = 0.050 \text{ mag}$  (Schlegel et al. 1998). The Galactic extinction in each filter has been estimated through the NASA/IPAC Extragalactic Database extinction calculator<sup>1</sup>.

<sup>1</sup> <http://nedwww.ipac.caltech.edu/forms/calculator.html>.



**Figure 1.** *Swift*/BAT light curve in the 15–150 keV energy band. The dashed line shows the best-fitting model as obtained with the model by Norris et al. (2005). The typical error bar is shown in the upper left corner.

Specifically, the extinction in each filter is derived through the parametrisation by Cardelli et al. (1989):  $A_U = 0.27$ ,  $A_B = 0.22$ ,  $A_{g'} = 0.20$ ,  $A_V = 0.16$ ,  $A_{r'} = 0.15$ ,  $A_R = 0.13$ ,  $A_{i'} = 0.11$ ,  $A_I = 0.10$ ,  $A_J = 0.04$ ,  $A_H = 0.03$ , and  $A_K = 0.02$  mag.

### 3 DATA REDUCTION AND ANALYSIS

#### 3.1 Gamma-ray data

We processed the *Swift*/BAT data of GRB 120404A using the latest version of the HEASOFT package (v6.12). We extracted the mask-tagged light curve and energy spectra in the 15–150 keV energy band by adopting the ground refined coordinates provided by the BAT team (Ukwatta et al. 2012). The BAT detector quality map was obtained by processing the closest-in-time enable/disable detector map. Energy calibration was applied using the closest-in-time gain/offset file with the tool BATMASKWTEVT. Figure 1 shows the mask-weighted 15–150 keV time profile of GRB 120404A recorded by the *Swift*/BAT detector. It consists of a single fast-rise exponential-decay (FRED) pulse peaking at 3 s with a  $T_{90} = 48 \pm 16$  s, from  $-15.5$  to 32.5 s. The flux shown is derived assuming the rate-to-flux conversion obtained from the time-integrated spectrum over the  $T_{90}$  interval (see below). Fitting the time profile with the model by Norris et al. (2005) gives a satisfactory result ( $\chi^2/\text{dof} = 171/143$ ), as shown by the dashed line in Figure 1. The parameters used are the peak time  $t_{\text{peak}}$ , the peak flux  $A$ , the rise and decay times  $\tau_r$  and  $\tau_d$ , the pulse width  $w$ , and the asymmetry  $k$ . Their best-fitting values are reported in Table 1. The shape of the pulse with a corresponding decay-to-rise ratio of 2.2 is very typical of classical *Fast Rise Exponential Decays* (FREDs) (Norris et al. 1996).

The 15–150 keV peak flux is calculated from the spectrum integrated around the peak, from 2.2 to 4.3 s; this can be fitted with a power-law with a photon index of  $1.9 \pm 0.3$  ( $\chi^2/\text{dof} = 6.5/8$ ) with a peak flux of  $(7.3 \pm 1.2) \times 10^{-8}$  erg cm $^{-2}$  s $^{-1}$  and a peak photon flux

of  $(1.1 \pm 0.2)$  ph cm $^{-2}$  s $^{-1}$ . The 15–150 keV time-integrated spectrum over the  $T_{90}$  interval can be fitted with a power law with a photon index of  $\Gamma_\gamma = 1.91 \pm 0.15$  and a total fluence of  $(1.63 \pm 0.14) \times 10^{-6}$  erg cm $^{-2}$ . Compared with the catalogue of BAT (Sakamoto et al. 2011), GRB 120404A is a medium burst in terms of both peak flux and fluence. The typical low-energy and high-energy photon indices of GRB prompt emission spectra (e.g., Kaneko et al. 2006; Sakamoto et al. 2011) suggest that the peak energy,  $E_p$ , is likely to lie either within or below the 15–150 keV energy band.

Despite the unknown value of  $E_p$ , we can constrain it from the photon index measured with BAT through the relation by Sakamoto et al. (2009) taking into account its large dispersion. We infer that  $E_p$  is likely to range between  $\sim 1$  and 100 keV, corresponding to an intrinsic (i.e., source-rest frame) value for  $E_{p,i}$  between  $\sim 4$  and  $\sim 400$  keV. We can make a further step by constraining the isotropic-equivalent radiated energy  $E_{\gamma,\text{iso}}$  in the GRB rest-frame 1–10 $^4$  keV energy band. We assume the spectrum to be described with the Band function with typical values for the photon indices,  $\alpha_B = -1$  and  $\beta_B = -2.3$  (Kaneko et al. 2006). By propagating the uncertainty on  $E_p$  in calculating the corresponding  $E_{\gamma,\text{iso}}$ , we end up with an estimate of  $E_{\gamma,\text{iso}} = (9 \pm 4) \times 10^{52}$  erg.

We calculated a  $3\sigma$  upper limit to the average 15–150 keV flux in the time interval from 200 to 800 s. This is roughly simultaneous with a constant optical flux phase preceding the major rebrightening and, as such, is useful to constrain the spectral index of a possible long-lived, low-level prompt emission with an optical counterpart. We obtained an upper limit on the average flux of  $6.8 \times 10^{-10}$  erg cm $^{-2}$  s $^{-1}$ , or, equivalently,  $f_{\nu,\gamma} < 2.2$   $\mu\text{Jy}$  at  $\nu_\gamma = 1.2 \times 10^{19}$  Hz (50 keV). Combined with the dust-corrected value for the  $R$  band measured during the early constant phase,  $f_{\nu,R} = 270$   $\mu\text{Jy}$  at  $\nu_R = 4.7 \times 10^{14}$  Hz, it turns into a lower limit to the average optical-to- $\gamma$  spectral index,  $\beta_{\text{opt}-\gamma} > 0.5$ . The observed  $\beta_{\text{opt}-\gamma}$  distribution for a large number of GRBs is consistent with values larger than 0.5 (Yost et al. 2007b; Kopač et al. 2013), unless one considers GRBs classified as dark (Yost et al. 2007a), most of which are dust-extinguished (Perley et al. 2009; Fynbo et al. 2009; Greiner et al. 2011; Zauderer et al. 2013). Hence, the possibility of a long-lasting  $\gamma$ -ray emission below the BAT sensitivity sharing a common origin with the early ( $t < 800$  s) optical detection is not at odds with what is observed for most unextinguished GRBs with measured optical and high-energy prompt emission.

#### 3.2 X-ray data

The *Swift*/XRT began observing GRB 120404A on 2012 April 04 at 12:53:25 UT, about 143 s after the trigger, and ended on 2012 April 07 at 22:39:57, with total net exposures of 117 s in window timing (WT) and 26.2 ks in photon counting (PC) modes spread over 6.9 days. The XRT data were processed following the procedure described in Margutti et al. (2013), applying calibration and standard filtering and screening criteria. The XRT analysis was performed in the 0.3–10 keV energy band.

We extracted the 0.3–10 keV energy spectrum in the time interval from 10.4 to 21.1 ks; later observations did not allow us to collect enough photons to ensure the extraction of

**Table 1.** Best-fitting parameters of the time profile of the prompt  $\gamma$ -ray pulse as seen in the 15–150 keV band.

$t_{\text{peak}}$ (s)	Peak flux ( $10^{-8}$ erg cm $^{-2}$ s $^{-1}$ )	$\tau_{\text{r}}$ (s)	$\tau_{\text{d}}$ (s)	$w$ (s)	$k$	$\chi^2/\text{dof}$
$3.1 \pm 7.1$	$5.1 \pm 0.3$	$11.0 \pm 2.6$	$24.3 \pm 4.2$	$35.2 \pm 6.6$	$0.38 \pm 0.05$	171/143

another meaningful spectrum. Source and background spectra were extracted from the same regions as those used for the light curve. Spectral channels were grouped so as to have at least 20 counts per bin. The ancillary response files were generated using the task XRTMKARF. Spectral fitting was performed with XSPEC (v. 12.5). The spectrum can be modelled with an absorbed power law with the combination of XSPEC models WABS ZWABS POW, based on the photoelectric cross section by Morrison & McCammon (1983). The Galactic neutral hydrogen column density along the GRB direction was fixed to the value determined from 21 cm line radio surveys:  $N_{\text{HI}}^{\text{Gal}} = 3.4 \times 10^{20}$  cm $^{-2}$  (Kalberla et al. 2005). The additional X-ray absorption, modelled in the GRB rest frame, was found to be  $N_{\text{HI},z} = 6.3_{-5.4}^{+6.4} \times 10^{21}$  cm $^{-2}$ , very typical of X-ray afterglow spectra (e.g., Campana et al. 2012). The X-ray photon index in the 0.3–10 keV energy band is  $\Gamma_X = 2.3 \pm 0.3$ .

The X-ray unabsorbed flux light curve was derived from the rate curve by assuming the same counts-to-energy factor ( $5.4 \times 10^{-11}$  erg cm $^{-2}$  count $^{-1}$ ) obtained from the spectrum described above. This implicitly relies on the lack of strong spectral evolution from  $\sim 10$  ks onward; although such an assumption cannot be proven due to the paucity of photons at late times, this is in agreement with what is observed for most GRBs (e.g., Evans et al. 2009). Finally, the flux-density curve shown in Figure 2 was calculated at 1.8 keV, the energy at which the energy spectrum with  $\beta_X = \Gamma_X - 1 = 1.3$  has the same value as that averaged over the 0.3–10 keV range. The X-ray light curve can be modelled ( $\chi^2/\text{dof} = 61/100$ ) with a double broken power-law with power-law indices  $\alpha_1 = 2.28 \pm 0.24$ ,  $\alpha_2 = -0.1 \pm 0.7$ ,  $\alpha_3 = 1.8 \pm 0.3$ , and break times  $t_1 = (540 \pm 120)$  s,  $t_2 = (2480 \pm 460)$  s, respectively, in agreement with previous reports (Stratta et al. 2012).

### 3.3 Optical and infrared data

Both FTN and FTS carried out robotically triggered observations: FTN observed from 4 to 75 min, while FTS observed from 17 min to 5.6 hr. The automatic identification of the afterglow by the GRB pipeline LT-TRAP (Guidorzi et al. 2006) triggered the multi-filter (*BVRi'*) observation sequence. The optical afterglow position is  $\alpha(\text{J2000}) = 15^{\text{h}}40^{\text{m}}02^{\text{s}}.30$ ,  $\delta(\text{J2000}) = +12^{\circ}53'06''.4$  with an error radius of  $0''.5$ , consistent with the position determined by *Swift*/UVOT (Stratta et al. 2012) and radio observations (Zauderer et al. 2012).

Later observations were carried out with the 1.04-m ARIES telescope with the *RI* filters. Observations started at 6.5 hr and last about one hour through a sequence of four (three) individual frames in the *R* (*I*) filter 300-s exposure each. The afterglow is clearly detected in the coadded frames for both filters.

We observed GRB120404A with the VLT/X-shooter

spectrograph at 15.9 hr (D’Elia et al. 2012). In particular, we obtained a photometric estimate in the *R* band from the 30-s exposure acquisition frame.

GROND observed GRB120404A from 18.2 to 20.7 hr simultaneously with the *g'r'i'z'* *JHK* filters. The afterglow was clearly detected in all filters, except for *K* for which an upper limit of 20.5 mag was given.

Calibration of the *g'r'i'z'* frames was performed against five field stars of the Sloan Digital Sky Survey (SDSS; release 6). Magnitudes in the Johnson-Cousins *BVRI* filters for the same calibrating stars were derived from the SDSS values using the transformations by Jordi et al. (2006). For each filter the scatter in the zero point was added in quadrature to the statistical uncertainty of each individual frame. Both aperture and PSF photometry was systematically carried out using the Starlink GAIA software<sup>2</sup>, making sure that both gave consistent results within the uncertainties. In the case of VLT/X-shooter frames, the night was not photometric and we could only use two faint field stars different from the five stars mentioned above; for the acquisition frame, the zero-point was poorly determined with an uncertainty of 0.3 mag. GROND *JHK* filters were first calibrated against nearby 2MASS catalogue stars and then converted to *AB* magnitudes.

Magnitudes were finally converted into flux densities ( $\mu\text{Jy}$ ) following Fukugita et al. (1995, 1996). Table 6 reports the photometric set for all NIR/optical data we collected. Magnitudes are corrected for airmass, while flux densities are also corrected for Galactic reddening.

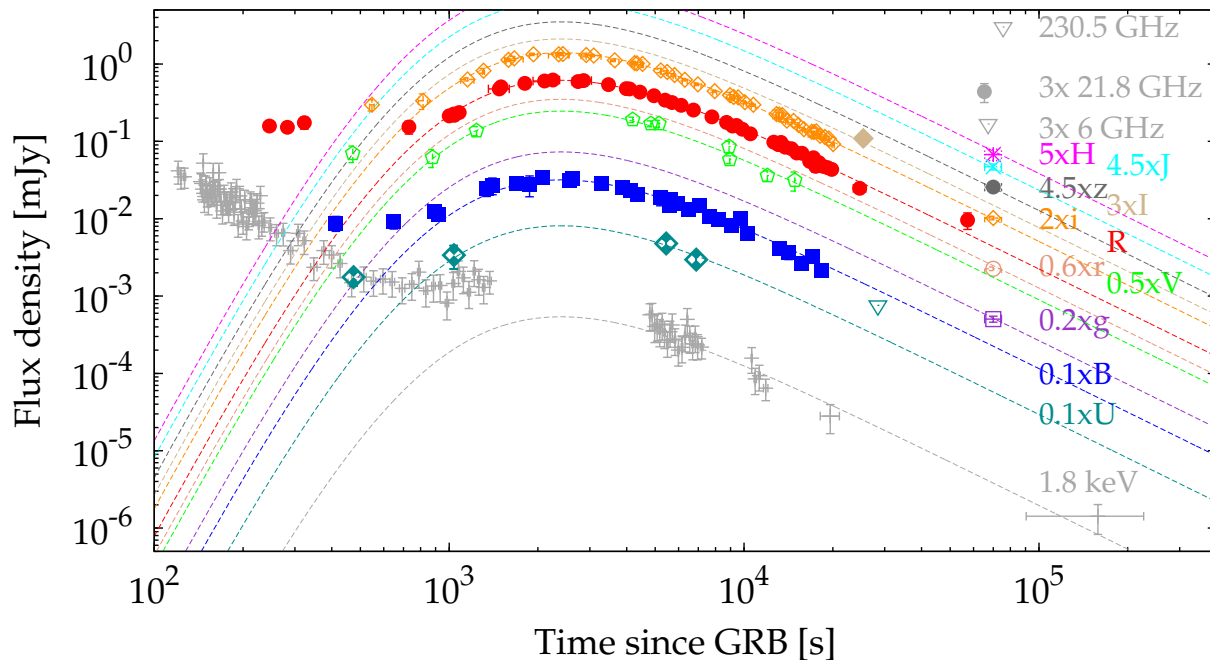
#### 3.3.1 Spectroscopy

On April 4.57 UT we observed the optical afterglow of GRB120404A with the Gemini-North telescope and the GMOS camera (Hook et al. 2004): we obtained  $2 \times 900$  s spectra, using the B600 grism with the  $1''$  slit (resolution of about  $3.5 \text{ \AA}$ ) centred at  $6500 \text{ \AA}$ , covering wavelengths 5000–8000  $\text{\AA}$ . The data were analysed using the standard GEMINI/GMOS data analysis packages within the IRAF<sup>3</sup> environment. We performed flat-fielding, wavelength calibration (using a CuAr lamp spectra obtained immediately after the science frames), and cosmic ray rejection using the *lacos.spec* package (van Dokkum 2001). A sky region close in the spatial direction, but unaffected by the spectral trace, was used for sky subtraction. The two-dimensional spectra were then coadded.

Figure 3 presents the final coadded spectrum, normalised to the continuum: the afterglow spectrum presents

<sup>2</sup> <http://starlink.jach.hawaii.edu/starlink>.

<sup>3</sup> IRAF is distributed by the National Optical Astronomy Observatory, which is operated by the Association for Research in Astronomy, Inc., under cooperative agreement with the National Science Foundation.



**Figure 2.** Panchromatic light curve from radio to X-rays of the early afterglow of GRB 120404A. Upside down triangles show upper limits. Normalisations have been rescaled for the sake of clarity. Lines show the result of a simultaneous, achromatic fit of the rebrightening. See text for further details.

a very complex series of absorption features. The main one, indicated in blue, is associated to the GRB host galaxy (at  $z = 2.8767$ ) thanks to the identification of low- and high-ionised species as well as fine-structure transitions due to the UV radiation of the GRB interacting with the interstellar medium (Vreeswijk et al. 2007; Prochaska et al. 2006). In addition, we were able to identify an unusual set of intervening systems, based on MgII and CIV doublets identifications, indicating a very complex line of sight (see also, GRB 060418, Vreeswijk et al. 2007). These systems, at  $z = 2.551, 1.776, 1.633, 1.101,$  and  $1.023$  are likely associated with galaxies along the lines of sight.

### 3.4 Radio and mm data

We observed the position of GRB 120404A with the Karl G. Jansky Very Large Array (JVLA Perley et al. 2011) at 21.8 GHz (K band) and 6.0 GHz (C band) beginning 2012 April 5 at 06:14:39 UT and with the Smithsonian Astrophysical Observatory’s Submillimeter Array (SMA; Ho et al. 2004) at 230.5 GHz (1.3 mm) beginning 2012 April 5 at 7:27:31 UT. Observations are summarised in Table 7. A source of radio emission was detected at 21.8 GHz with a flux of  $87.6 \pm 24.0 \mu\text{Jy}$  at a position of  $\alpha = 15:40:02.28 (\pm 0.01)$  and  $\delta = 12:53:06.1 (\pm 0.1)$ , with  $1\sigma$  positional uncertainties. This radio position is consistent with both the *Swift*/XRT position (Osborne et al. 2012) and the UVOT position (Stratta et al. 2012). No significant source of emission was detected at the position of GRB 120404A at 6.0 GHz with the VLA to a  $3\sigma$  upper limit of  $33.6 \mu\text{Jy}$  or at 230.5 GHz with the SMA to a  $3\sigma$  upper limit of  $\sim 3$  mJy.

VLA observations utilised the WIDAR correlator (Dougherty & Perley 2010), with 1.024 GHz bandwidth in each of the upper and lower sidebands (eight intermediate

frequencies per sideband, each with 64, 2 MHz channels). At K band, we centred the frequency for each sideband at 19.1 GHz and 24.4 GHz, with a mean frequency of 21.8 GHz. At C band, we centred the frequency for each sideband at 4.9 GHz and 7.0 GHz, with a mean frequency of 6.0 GHz. In practice, after flagging edge channels and excising RFI, we obtained a total continuum bandwidth of  $\sim 75\text{--}85\%$  (at C band where there is more RFI and K band, respectively).

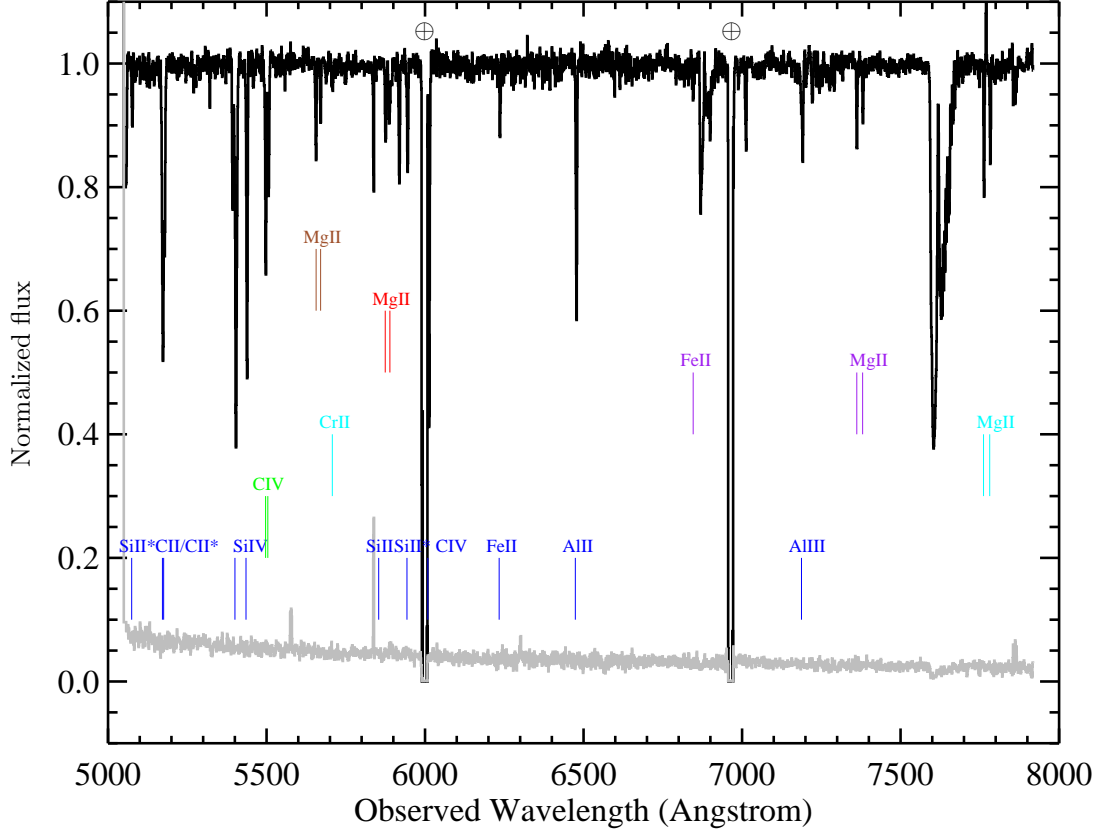
For VLA observations, we calibrated our bandpass and flux scaling using 3C286, and performed gain calibrations with J1553+1256 ( $3.3^\circ$  from GRB 120404A). Observations were obtained in the C configuration (maximum baseline  $\sim 3.4$  km), and the synthesised beam size is noted in Table 7. Reference pointing offsets were measured and applied prior to bandpass/flux observations using 3C286 and prior to the gain calibrator/source observations using J1608+1029 at 8.4 GHz, according to standard VLA procedures. Flagging, calibration, and imaging were performed using standard procedures in AIPS (Greisen 2003).

SMA 230.5 GHz observations were obtained in the very extended configuration, with baseline lengths ranging from 103–476 m. The synthesised beam size is noted in Table 7. Neptune and Titan were utilised for flux measurements, 3C454.3 and 3C279 for bandpass, and 1550+054 and 1540+147 for gain calibration. Data reduction was performed using standard MIRIDL and MIRIAD procedures.

## 4 MODELLING AND INTERPRETATION

### 4.1 Broadband fitting

We modelled the multi-filter light curves simultaneously by imposing common power-law indices, given the apparent lack of evidence for strong chromatic evolution dur-



**Figure 3.** Continuum normalised spectrum of GRB 120404A observed with the Gemini-North (black is the spectrum and grey is the error array associated with it); the main system at  $z = 2.8767$  (blue) is associated with the GRB host galaxy and presents several low- and high-ionised species as well as fine-structure transitions features (e.g. SiII\*, CII, CII\*, SiIV, CIV). In addition, four more systems have been identified, based on the identification of metal lines:  $z = 2.551$  (green, CIV),  $z = 1.776$  (cyan, CrII, MgII doublet),  $z = 1.633$  (purple, FeII and MgII),  $z = 1.101$  (red, MgII), and  $z = 1.023$  (brown, MgII).

ing the rebrightening. We adopted the same approach as for past events (e.g., see Guidorzi et al. 2011) with important changes: in the previous treatment, the different normalisations of each filter, initially treated as independent parameters, were then used to construct a SED. In this case we adopted a more general approach, since we fitted both the temporal and spectral dependence of the flux density at different wavelengths simultaneously. We assumed the SED to be described by a simple power-law model,  $F(\nu, t) \propto \nu^{-\beta_0} \times 10^{-0.4 A(\nu)}$ , where the term  $A(\nu)$  accounts for the rest-frame dust extinction as modelled according to three different (SMC, LMC, MW) profiles in the Pei (1992) parametrisation. The temporal behaviour was modelled in the time interval from 800 to  $2 \times 10^5$  s, i.e. from the rebrightening onset. The complete model describing the temporal evolution of flux densities at all optical wavelengths is given in eq. (1),

$$F(\nu, t) = F_{15} \nu_{15}^{-\beta_0} 10^{-0.4 A(\nu)} \times \left[ \frac{1 - \alpha_1/\alpha_2}{\left(\frac{t}{t_p}\right)^{n\alpha_1} + \left(\frac{t}{t_p}\right)^{n\alpha_2} \left(-\frac{\alpha_1}{\alpha_2}\right)} \right]^{1/n}, \quad (1)$$

where the free parameters are  $F_{15}$ , i.e. the dust-unextinguished flux density at  $\nu = 10^{15}$  Hz ( $\nu_{15} = \nu/10^{15}$  Hz) at the peak time ( $t = t_p$ ), the spectral index  $\beta_0$ , the extinction  $A_V$  incorporated in the term  $A(\nu)$ , the rise ( $\alpha_1 < 0$ ) and decay ( $\alpha_2 > 0$ ) power-law indices, the peak time  $t_p$ , the smoothness parameter  $n$ . Frequencies are expressed in the GRB rest-frame. We chose to use the peak time rather than the break time (e.g., see the parameter  $t_{b1}$  in eq. 1 of Guidorzi et al. 2011), as the free parameter, since  $t_p$  is the interesting parameter and its uncertainty does not have to be calculated taking into account the complicated covariance with other free parameters as it is required for derived (i.e., not free) quantities. Best-fitting parameters were found by minimising the total  $\chi^2$ , as expressed in eq. (2),

$$\chi^2(F_{15}, \beta_0, A_V, \alpha_1, \alpha_2, t_p, n) = \sum_{k,i} \left( \frac{F(\nu_k, t_{k,i}) - F_{\nu_k,i}}{\sigma_{\nu_k,i}} \right)^2, \quad (2)$$

where  $F_{\nu_k,i}$  and  $\sigma_{\nu_k,i}$  are the measured flux density and uncertainty for  $\nu = \nu_k$  at the time  $t = t_{k,i}$ . The observed filter  $U$  has an effective rest-frame wavelength of 890 Å, i.e. bluewards of the Lyman limit of 912 Å. Its flux density is thus heavily suppressed by the neutral hydrogen along the sightline. Because of this, we let the normalisation constant



for the  $U$  filter to be independently determined by the fitting procedure.

The first three lines in Table 2 report the results obtained by fitting the optical data alone with the three different dust extinction profiles. Although all of the extinction profiles yield formally acceptable  $\chi^2$  values, in the following we show that only the MW profile provides a plausible and self-consistent description of the SED. All models provide identical temporal evolution of the light curves, the only discrepancies concerning the spectral parameters. As is often the case, the rise slope is determined with large uncertainty, whereas the decay slope is more accurately measured,  $\alpha_2 = 1.9 \pm 0.1$ . The peak time essentially remains the same, around  $2.4 \pm 0.6$  ks, regardless of the model adopted.

While in Section 4.1.2 we modelled a detailed optical–X–ray SED taking into account the X–ray spectral shape itself, here we preliminarily added the X–ray flux history obtained by assuming a constant count–to–flux conversion. We determined the reference energy  $\hat{E} = 1.8$  keV, i.e. the energy at which the flux density is the same as the average one in the XRT passband 0.3–10 keV for a power–law spectrum with  $\Gamma_X = 2.3$  obtained in Section 3.2. Excluding the initial steep decay ( $t < 800$  s), which clearly has a different origin from the subsequent emission, X–rays exhibit the same temporal behaviour as the optical photons. This justifies a common fit. For the same reason, we also exclude the presence of any break frequency between optical and X–rays, so a simple power–law appears to be the only plausible spectrum. Fitting all data sets together, one obtains almost identical results for the MW extinction profile, which is still the best model by far, as reported in the last three lines of Table 2. For the two remaining profiles, forcing no break between optical and X–rays clearly changes the spectral index from the corresponding previous cases where X–ray data had not been considered. Although these models cannot be rejected solely because of their  $\chi^2$  values, the modelling obtained assuming a MW profile offers by far the best, and most self-consistent description of our data, thus lending support to the evidence for the presence of a 2175 Å bump. The resulting MW–profile based model for each light curve is shown together with data in Figure 2.

From the accurate spectral and temporal modelling we can estimate the total energy released in the optical–to–X–ray frequency range during the rebrightening from 800 s on,  $E_{\text{reb}}$ , properly corrected for dust extinction. Strictly speaking, since the low–energy part of the SED as well as the flux at early times ( $t < 800$  s) are poorly known, our estimate should be taken as a lower limit. However, taking into account the uncertainty on  $\alpha_1$  and extrapolating the power–law spectrum to much lower frequencies, the result does not change by more than a factor of two.

$$\begin{aligned}
 E_{\text{reb}} &\gtrsim \frac{4\pi D_L^2}{1+z} \int_{\nu_H}^{\nu_x} d\nu \int_{800\text{ s}}^{+\infty} dt F(\nu, t) 10^{0.4A(\nu)} \quad (3) \\
 &= 15 F_{15} \left( \frac{\nu_{x,15}^{1-\beta} - \nu_{H,15}^{1-\beta}}{1-\beta} \right) \text{ erg} = 2 \times 10^{52} \text{ erg},
 \end{aligned}$$

where  $D_L = 7.6 \times 10^{28}$  cm is the luminosity distance. Hence, the energy released during the rebrightening is a non-negligible fraction of the isotropic-equivalent one released in the prompt emission,  $E_{7,\text{iso}} = (9 \pm 4) \times 10^{52}$  erg (Section 3.1).

**Table 3.** Peak time as a function of rest–frame frequency.

Observed filter	Rest–frame $\nu_{\text{eff}}$ ( $10^{15}$ Hz)	Peak time $t_p$ (s)
$i'$	1.56	$2420 \pm 40$
$R$	1.81	$2360 \pm 60$
$V$	2.14	$2350 \pm 140$
$B$	2.67	$2220 \pm 100$
$X$	1686	$1310^{+170}_{-150}$

#### 4.1.1 Evidence for chromaticity

Although a simple, achromatic model for the rebrightening and subsequent decay was shown to provide an acceptable description, we investigated whether there exists evidence for chromatic evolution, by allowing different peak times for the light curves at different wavelengths. To this aim, we applied the same fitting procedure as in Section 4.1, but allowing independent peak times for the best sampled filters:  $i'$ ,  $R$ ,  $V$ ,  $B$ , and X–ray. For the remaining filters we used the sample peak time as that of the closest-in-frequency filter among those treated as free parameters. Limiting to the best-fitting case given by the MW dust extinction one, the total  $\chi^2/\text{dof}$  improved from that obtained in the strictly achromatic case, 103/150, to 89/146. Such values for the total  $\chi^2$ , being smaller than 1, probably reflect that uncertainties on individual measures have likely been overestimated following a conservative approach. Formally, the p–value according to the additive F–test is  $4 \times 10^{-4}$ . However, the small  $\chi^2$  values suggest a more conservative F–test calculation assuming a unitary reduced  $\chi^2$  for the chromatic model, which yields a p–value of 1.0 %. We therefore conclude that there is evidence for chromatic evolution with  $\lesssim 1\%$  confidence. What is more, the peak time as a function of wavelength follows a precise trend: the higher the effective frequency, the earlier the light curve seems to peak, as reported in Table 3. Should the improvement be entirely due to chance, one would expect no such trend between peak time and frequency. Modelling this dependence with a power–law,  $\nu_{\text{eff}} \propto t^{-\delta}$ , yields  $\delta = 12 \pm 4$ , where the time origin was fixed to the GRB trigger time. Interpreting this as the crossing of a given break frequency through different filters at different times, as one would expect for the synchrotron spectrum evolution, the temporal dependence is too strong to match any theoretical expectation, unless one resets the time origin. Ignoring the X–ray band, the same index is poorly constrained,  $\delta = 6 \pm 3$ , which still implies a strong evolution. Overall, the evidence for a time lag in the peak as a function of frequency cannot be considered compelling, but surely plausible and likely.

#### 4.1.2 Optical-to-X-ray spectral energy distribution

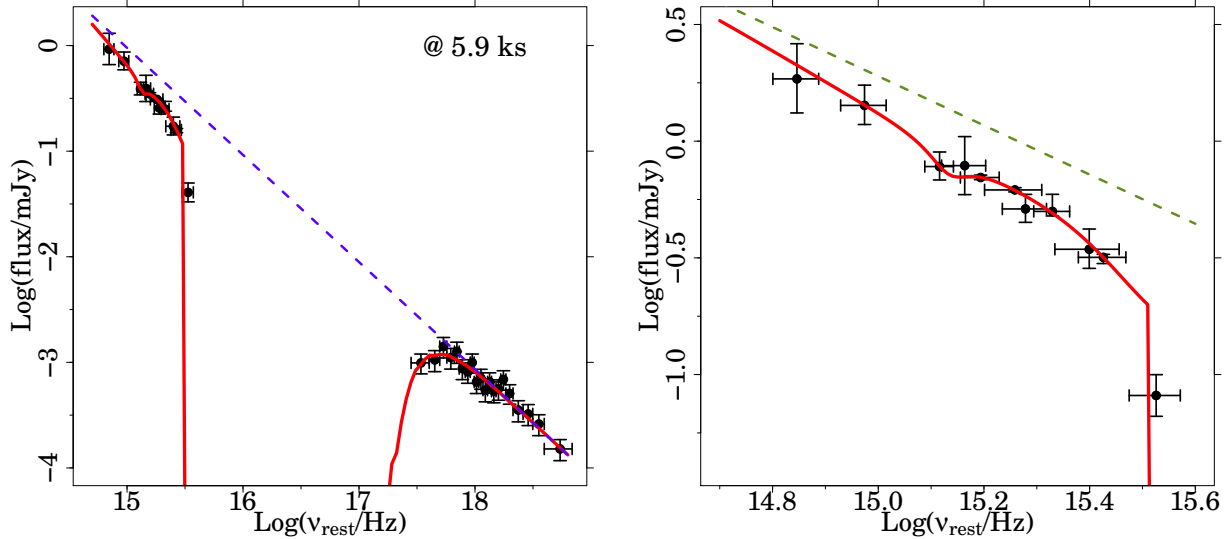
Although XRT could not collect data around the optical peak, still the available data support the view that, after the initial steep decay, the X–ray flux underwent the same temporal rebrightening followed by an analogous power–law decay. We therefore accumulated an X–ray energy spectrum right after the optical peak, from 4.7 to 7.3 ks, i.e. when the final power–law decay with  $\alpha_2 = 1.9$  already set in. The reference time when the instantaneous flux is the same as

**Table 2.** Spectral and temporal best-fitting parameters describing the evolution of the flux densities at optical and X-ray wavelengths.

Data	Dust	$F_{15}^{(a)}$ (mJy)	$\beta_o$	$A_V^{(b)}$ (mag)	$\alpha_1$	$t_p$ (s)	$\alpha_2$	$n$	$\chi^2/\text{dof}$
optical	MW	$1.89 \pm 0.09$	$1.05 \pm 0.09$	$0.22 \pm 0.05$	$-7.5^{+5.2}_{-4.6}$	$2395 \pm 55$	$1.89 \pm 0.06$	$0.16^{+0.16}_{-0.08}$	89/124
optical	LMC	$1.93 \pm 0.12$	$0.39^{+0.25}_{-0.22}$	$0.32 \pm 0.08$	$-6.6 \pm 3.7$	$2400 \pm 55$	$1.86 \pm 0.06$	$0.19^{+0.15}_{-0.09}$	98/124
optical	SMC	$1.67 \pm 0.20$	$-0.23^{+0.68}_{-0.37}$	$0.32 \pm 0.09$	$-6.4 \pm 3.7$	$2401 \pm 55$	$1.86 \pm 0.06$	$0.19^{+0.16}_{-0.09}$	125/124
opt-X	MW	$1.89 \pm 0.06$	$1.05 \pm 0.03$	$0.22 \pm 0.04$	$-7.2^{+4.7}_{-4.3}$	$2397 \pm 55$	$1.88 \pm 0.06$	$0.16^{+0.16}_{-0.08}$	103/150
opt-X	LMC	$1.57 \pm 0.05$	$1.04 \pm 0.02$	$0.12 \pm 0.03$	$-7.2^{+4.7}_{-4.2}$	$2399 \pm 55$	$1.89 \pm 0.05$	$0.17^{+0.16}_{-0.09}$	172/150
opt-X	SMC	$1.42 \pm 0.05$	$1.04 \pm 0.02$	$0.07 \pm 0.02$	$-7.5 \pm 4.5$	$2397 \pm 55$	$1.90 \pm 0.05$	$0.16^{+0.16}_{-0.08}$	167/150

(a) Flux density at the rest-frame frequency of  $10^{15}$  Hz, at peak and corrected for dust extinction.

(b) Rest-frame quantity.



**Figure 4.** *Left panel.* Rest-frame optical-X SED at  $\hat{t} = 5.9$  ks. The solid line shows the best-fitting model obtained with a MW extinction profile and a simple power-law with index  $\beta = 1.01 \pm 0.03$ . The dashed line shows the SED one would have observed in the absence of dust. *Right panel.* Close-in of the optical points.

the average one over the above time interval, is found to be  $\hat{t} = 5.9$  ks. To determine the optical flux densities at each wavelength, we ran the multi-filter procedure of Section 4.1. However, we did not model the spectral parameters, but we introduced an independent normalisation term each light curve to be freely determined, in the same fashion as we used to do for previous GRBs (e.g., Guidorzi et al. 2011). Not surprisingly, the temporal parameters describing the light curve evolution did not change (Table 2). The best-fitting normalisations at each filter, expressed as flux densities at peak, are reported in Table 4. Optical flux densities at the X-ray spectrum reference time  $\hat{t}$  were calculated simply by rescaling the corresponding peak values using the temporal model in Table 2, which yielded a factor of 0.50. We thus constructed an optical-X SED at  $\hat{t}$  by rescaling the optical flux densities. Given the same temporal decay exhibited by optical and X-ray profiles, no break frequency in between is to be expected, consistently with the simple power-law model adopted in Section 4.1.

In addition to modelling the dust extinction, we also had to account for the photoelectric absorption which suppressed the soft X-ray flux. We modelled this us-

**Table 4.** Best-fitting flux densities at peak.

Parameter	Value	Unit
$F_H$	$1850^{+750}_{-530}$	$\mu\text{Jy}$
$F_J$	$1420^{+300}_{-250}$	$\mu\text{Jy}$
$F_z$	$778^{+114}_{-100}$	$\mu\text{Jy}$
$F_I$	$785^{+260}_{-200}$	$\mu\text{Jy}$
$F_i$	$699 \pm 16$	$\mu\text{Jy}$
$F_R$	$618 \pm 13$	$\mu\text{Jy}$
$F_r$	$512 \pm 8$	$\mu\text{Jy}$
$F_V$	$500^{+43}_{-40}$	$\mu\text{Jy}$
$F_g$	$344^{+73}_{-61}$	$\mu\text{Jy}$
$F_B$	$318 \pm 14$	$\mu\text{Jy}$
$F_U$	$81^{+19}_{-15}$	$\mu\text{Jy}$
$\chi^2/\text{dof}$	83/117	

ing the photoelectric cross section as parametrised by Morrison & McCammon (1983). The amount of gas responsible for this absorption was modelled in terms of neutral hydrogen column density evaluated in the GRB rest-frame,

$N_{\text{H}}$ , assuming solar abundances. The Galactic contribution was accounted for separately.

The only acceptable model is that obtained assuming a MW extinction profile. Its best-fitting parameters were:  $\beta = 1.01 \pm 0.03$ ,  $A_V = 0.24 \pm 0.07$  mag,  $N_{\text{H}} = 5.2^{+2.6}_{-1.7} \times 10^{21} \text{ cm}^{-2}$ ,  $\chi^2/\text{dof} = 32.4/27$ , with a null hypothesis probability of 22% (Table 2). This result is fully compatible with what is obtained adopting the same extinction profile when we fitted the optical data alone (Section 4.1). The result is shown in Figure 4.

## 4.2 The standard afterglow model

In the context of the standard afterglow model (see, e.g., Mészáros 2006; van Eerten 2013; Gao et al. 2013 for reviews), a population of shock-accelerated electrons cools through synchrotron emission, resulting in spectra and light curves that are characterised by power-law segments, which join at given break frequencies. The electron energy distribution is assumed to be  $dN/d\gamma \propto \gamma^{-p}$  ( $\gamma > \gamma_m$ ). Typical values for  $p$  found from GRB afterglow modelling range between 2 and 3, in broad agreement with theoretical expectations (e.g., Spitkovsky 2008). At sufficiently late times the afterglow emission is dominated by the forward shock (FS), i.e. the emission due to the shocked interstellar medium, because the emission of the reverse shock - which propagates within the ejecta - is short-lived. At such times, the corresponding observed spectral and temporal decay indices for GRB 120404A are  $\beta = 1.0$  and  $\alpha_2 = 1.9$  (Table 2), with no apparent break from optical through X-rays (Fig. 4). Using  $\nu_{\text{m,f}}$  and  $\nu_{\text{c,f}}$  for synchrotron injection and cooling frequencies respectively associated with the FS, the most plausible scenario is the slow cooling regime at  $\nu_{\text{m,f}} < \nu_{\text{opt}} < \nu_{\text{x}} < \nu_{\text{c,f}}$ , for which  $\beta = (p - 1)/2$  yields  $p = 3$ . The decay index depends on the density profile of the circumstellar medium density such that for a homogeneous (wind) medium  $\alpha = 3(p - 1)/4 = 1.5$  ( $\alpha = (3p - 1)/4 = 2$ ).

Thus, simple analytical expectations show that a density profile more akin to a wind could be compatible with the observed spectral and temporal afterglow properties at late times. The closer in time to the initial prompt emission, the more complicated is the overall description of the observed radiation, due to multiple overlapping components from co-located or distinct emitting regions: e.g., an emitting reverse shock, energy injection due to on-going activity of the inner engine, or the onset of the afterglow itself due to the deceleration of the ejecta by the surrounding medium.

Large and accurate broadband data sets for a given GRB afterglow hold the potential to self-consistently constrain the geometry and dynamics of the relativistic outflow, the density profile of the circumstellar medium, as well as the detailed microphysics of the shock acceleration of electrons and local magnetic field generation. Here we show that even at late time, when most of the jet energy has already been transferred to the shocked ambient medium, a realistic and detailed physical description requires comparably realistic modelling. To do this, we adopt the model developed by van Eerten et al. (2012). In addition, we model, separately, the early time emission ( $t < 800$  s) when the afterglow is likely to be dominated by reverse-shock emission.

## 4.3 Relativistic shock physics and jet geometry

The interpretation of the late time broadband rebrightening in terms of radiation coming from an off-axis jet which finally reaches the observer proved successful in a number of similar cases, such as GRB 081028 (Margutti et al. 2010). We investigated the plausibility of this scenario for GRB 120404A by fitting our multi-frequency data set with the BOXFIT code.<sup>4</sup> This code assumes a homogeneous jet with sharp edges ploughing into a constant density medium; it is possible to calculate afterglow light curves and spectra due to synchrotron radiation at any observer time and frequency and the code performs data fitting with the downhill simplex method combined with simulated annealing. The blast wave dynamics have been calculated for 19 high-resolution, 2-D jet simulations performed with the relativistic adaptive mesh (RAM) parallel relativistic hydrodynamical (RHD) code. Exploiting the scale invariance of different jets with different energies and circumburst densities, the code calculates spectra and light curves by solving the linear radiative transfer equations including synchrotron self-absorption. At the cost of a relatively limited amount of computational time, it properly accounts for features such as jet decollimation, inhomogeneity along the shock front, and its late transition to non-relativistic regime. The free parameters include the jet geometry, the energetics and circumburst properties, the released energy, and the microphysics parameters which determine the basic properties of the synchrotron radiation caused by the relativistic shocks.

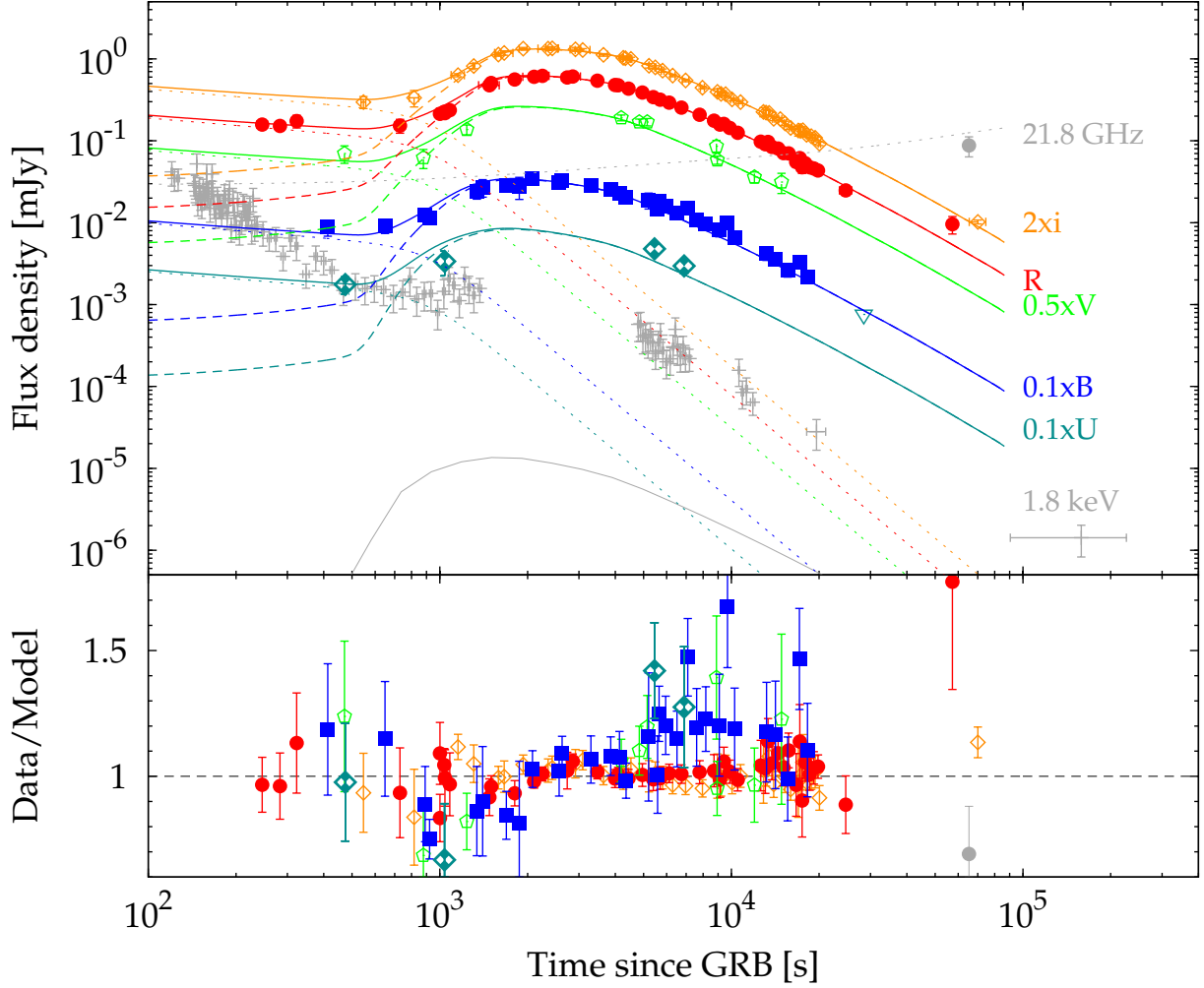
We fitted our broadband data set with the ‘‘Fermi’’ hybrid server for high performance computing of the University of Ferrara, equipped with 188 GB DDR3 of RAM memory.<sup>5</sup> The free parameters were the jet half-opening angle  $\theta_0$ , the isotropic-equivalent total released energy  $E_{\text{iso}}$ , the circumburst number density  $n$ , the viewing angle  $\theta_{\text{obs}}$ , the electron energy distribution index  $p$ , the fractions of internal energy going into magnetic fields and accelerated electrons,  $\epsilon_B$  and  $\epsilon_e$ , respectively, and the fraction of accelerated electrons,  $\xi_N$ . The code assumes that the fireball energy has already been transferred to the ISM, since it makes use of the Blandford-McKee solution (BM; Blandford & McKee 1976) as long as the Lorentz factor of the shocked interstellar matter is high enough. Consequently, the free parameters exclusively concern the propagation and the radiation of the FS.<sup>6</sup>

First, we corrected all the optical flux densities for a factor corresponding to how much the flux in each filter had been suppressed due to the local dust, because the code does not account for it. In this case, thanks to the robust estimate we obtained for the dust content (Section 4.1.2), this should not introduce a big source of uncertainty and, in any case, the correction was within a factor of 2 for all cases, except for the  $U$  filter. We obtained a remarkably good result for all the radio and optical data points starting from the onset of the rebrightening onwards, i.e. at  $t > 800$  s. However, in none of the allowed cases the best-fitting result could provide a successful match of the X-ray data, for which the

<sup>4</sup> <http://cosmo.nyu.edu/afterglowlibrary/index.html>

<sup>5</sup> <http://fermi.unife.it>

<sup>6</sup> We made sure that results did not depend appreciably on the adopted value for the `BM_start` parameter, by choosing a range of plausible values for it, as recommended by the code’s authors.



**Figure 5.** *Top panel:* light curves from radio to X-rays of the early afterglow of GRB 120404A. Here only the best sampled filters are shown together with the radio detection at 21.8 GHz. The models superposed to each data set are the synthetic light curves obtained with the BOXFIT code which best fit the corresponding data set. The continuously refreshed RS contribution (dotted line) is visible at early times, while the FS (dashed line) takes over at  $t \gtrsim 10^3$  s. *Bottom panel:* fractional residuals.

best-fitting solution underestimates the X-ray flux by more than a factor of 10. The best-fitting parameters obtained in this case are the following (Table 5):  $E_{\text{iso},53} = 1.8$ ,  $n_0 = 86$ ,  $\theta_0 = 26^\circ$ ,  $\theta_{\text{obs}} = 25^\circ$ ,  $p = 3.6$ ,  $\epsilon_{B,-4} = 4.7$ ,  $\epsilon_{e,-2} = 8.3$ , with  $\xi_N$  fixed to 1.0 ( $\chi^2/\text{dof} = 451/162$ ), where  $\epsilon_{B,-4} = \epsilon_B/10^{-4}$ ,  $\epsilon_{e,-2} = \epsilon_e/10^{-2}$ .

#### 4.3.1 X-ray excess and local cooling

A possible explanation for the underestimated X-ray flux likely lies in the global cooling time approximation, which is known to systematically underestimate the flux beyond the cooling break (van Eerten et al. 2010). The model adopted by the fitting code assumes a common synchrotron cooling time for all the fluid cells which are contributing to the observed spectrum. In reality, electrons are shock-accelerated at the blast wave front at different times for different fluid cells. As a result, the cooling time should be calculated from the time at which each local fluid element is shocked, which has a local dependence. The cooling frequency should be calculated with a much higher spatial resolution than the

fluid scale. In the global cooling approximation, the plasma is treated as a whole rather than locally. Consequently, the flux above the cooling frequency is systematically underestimated by a factor, which can be of the order of 10 or more, as shown by van Eerten et al. (2010). Indeed, the X-ray flux curve matches the overall observed behaviour and the shift required for a good match can in principle be entirely explained replacing the global cooling with the more realistic local cooling approximation.

Under the assumption that the mismatch between model and X-ray data is accounted for by the global cooling approximation, we ignored X-rays and fitted the remaining data set. The result is shown in Fig. 5 (dashed lines) and corresponds to the following set of best-fitting parameters:  $E_{\text{iso},53} = 1.9^{+0.7}_{-0.1}$ ,  $n_0 = 240^{+10}_{-90}$ ,  $\theta_0 = 23.1^{+0.8}_{-4.1}$  degrees,  $\theta_{\text{obs}} = (0.93 \pm 0.01) \theta_0$ ,  $p = 3.8 \pm 0.1$ ,  $\epsilon_{B,-4} = 2.4^{+0.1}_{-0.3}$ ,  $\epsilon_{e,-2} = 9.3^{+0.5}_{-3.4}$ ,  $\xi_N = 1.0_{-0.4}$  ( $\chi^2/\text{dof} = 173/122$ ). The parameters' uncertainties were calculated through the Monte Carlo procedure implemented in the code after determining the partial derivatives around the minimum. Although formally the quality of the fit is still poor (null hypothesis

probability of 0.2%), the overall capability of the code to reproduce the multi-band light curves from radio to UV is noteworthy. In particular, the fit residuals amount to a few % for the most accurate data points, whose uncertainties are comparably small.

#### 4.4 The nature of the early optical emission

The early optical emission is likely to be produced by a separate emission process from that of the later-time emission given the sharp change in the temporal evolution after  $\sim 800$  s. The flux is roughly consistent with being constant with time. We first tried to characterise this emission phenomenologically. The data points covering this part are too few for fitting eq. (1) with the same free parameters as used in Section 4.1. We therefore fixed the dust content to the previously determined value of  $A_V = 0.22$  mag. Nevertheless, the spectral index was poorly determined as  $\beta_0 = 0.6 \pm 0.6$ , i.e. roughly consistent with the later value of  $\sim 1.0$ . The flux density at the rest-frame frequency of  $10^{15}$  Hz is  $250_{-90}^{+150}$   $\mu$ Jy ( $\chi^2/\text{dof} = 1.0/5$ ).

We therefore instead tried a more physically motivated approach. One of the most natural and least ad-hoc possibilities is the presence of a short-lived RS accompanying the FS. The RS is to be expected whenever given conditions are fulfilled. This is the case when the magnetisation degree of the fireball  $\sigma$ , defined as the ratio of electromagnetism and kinetic energy density of the ejecta, is neither  $\sigma \ll 1$  nor  $\sigma > 1$  (Zhang & Kobayashi 2005). The various possible combinations of RS+FS light curves depend on the value of the synchrotron frequencies at deceleration of both shocks,  $\nu_{m,r}(t_d)$  and  $\nu_{m,f}(t_d)$  respectively, with respect to the observed frequency (Zhang et al. 2003; Gomboc et al. 2009; Harrison & Kobayashi 2013). In particular, in some cases the presence of a single peak or, more generally, the lack of evidence for a RS contribution, is explained in the context of the low-frequency model by relatively small microphysics parameters  $\epsilon_e$  and  $\epsilon_B$  which determine correspondingly small values for  $\nu_{m,r}$  and  $\nu_{m,f}$  (Mundell et al. 2007; Melandri et al. 2010; Guidorzi et al. 2011).

The value of the dimensionless parameter  $\xi_0 = (l/\Delta_0)^{1/2} \Gamma_0^{-4/3}$  determines the evolution of the RS propagating through the ejecta, where  $l = (3E_{\text{iso}}/4\pi m_p n c^2)^{1/3}$  is the Sedov length,  $\Delta_0 \simeq cT_{90}/(1+z)$  is the shell radial width in the coasting phase when it moves with a Lorentz factor  $\Gamma_0$  before the deceleration sets in. From the FS modelling obtained in Section 4.3 we calculate  $l = 5 \times 10^{17}$  cm. The deceleration time  $t_d$  must occur before 200 s, so it is possible to derive directly a lower limit to  $\Gamma_0$ ,

$$t_d = T_{90} + \frac{0.2}{\Gamma_0^{8/3}} \frac{l}{c} (1+z) < 200 \text{ s}, \quad (4)$$

where we used the numerical result  $t_d = (0.2 + \xi_0^{-2}) l/c \Gamma_0^{8/3}$  (Harrison & Kobayashi 2013). The condition on the initial bulk Lorentz factor is  $\Gamma_0 > 71$ . This constrains the shell regime to be  $\xi_0 < 4$ , which corresponds to the intermediate/thick shell regime (Kobayashi et al. 1999; Harrison & Kobayashi 2013).

Using this framework, we examine two possible interpretations of the early ( $\lesssim 800$  s) optical emission.

##### 4.4.1 A short-lived reverse shock

If the early time emission originates from the RS emission alone, one may explain the shallow-to-steep evolution as the passage of the RS typical frequency  $\nu_{m,r}$  (Kobayashi 2000). In the  $i'$  band we also see the passage of the FS component, so using these two times it is possible to infer estimates of  $\Gamma_0$ , of the parameter  $\xi_0$ , and of magnetisation  $R_B = \epsilon_{B,r}/\epsilon_{B,f}$ .

In the thick shell case, slow cooling regime, and frequency range  $\nu < \nu_{m,r}(t_d)$ , after the deceleration the flux is expected to decrease with a slope of  $\alpha_{r,1} = 17/36$  until  $\nu_{m,r} \propto t^{-73/48}$  crosses the observed band, after which the slope steepens to  $(73p+21)/96$  (Kobayashi 2000). We fitted the early dust-corrected  $UBVRi'$  fluxes imposing the aforementioned expected temporal evolution for the flux, that for  $\nu_{m,r}$ , the spectral slope of  $1/3$  at  $\nu < \nu_{m,r}$  (Sari et al. 1998), and left free to vary only two parameters, the crossing time of  $\nu_{m,r}$  through a given band (we chose the best sampled  $i'$ ),  $t_{r,m,i}$ , and the corresponding flux density,  $F_{r,m,i}$ . We fitted the observed flux densities removed of the contribution of the FS as modelled with the BOXFIT code. In spite of the very few additional degrees of freedom, the result is satisfactory. The overall quality of the RS+FS model of the entire data set, excluding the X-ray band, improves to  $\chi^2/\text{dof} = 178/129$  (p-value of 0.3%; Table 5), so basically equivalent to the refreshed shock modelling discussed in Section 4.4.2.

Taking  $\nu_{m,r}$  crossing  $i'$  band at the fitted value of 710 s and  $\nu_{m,f}$  crossing at 2400 s, then we can take the typical evolutions of these frequencies ( $t^{-3/2}$  and  $t^{-73/48}$  for FS and RS respectively), to estimate the ratio of frequencies at the deceleration time. This ratio has a very weak dependence on  $t_d$  due to the almost identical temporal evolution of both  $\nu_{m,r}$  and  $\nu_{m,f}$  and it is  $\nu_{m,r}/\nu_{m,f} \simeq 0.16$ . Using the numerical results by Harrison & Kobayashi (2013) and using the definition of  $\xi_0$  one can express this ratio as a function of  $\Gamma_0$  and  $R_B$  as

$$\frac{\nu_{m,r}(t_d)}{\nu_{m,f}(t_d)} = \left[ \frac{5 \times 10^{-3}}{\Gamma_0^2} + \left( \frac{cT_{90}}{l(1+z)} \right)^{3/2} \Gamma_0^2 \right] R_B^{1/2}. \quad (5)$$

The second constraint comes from the ratio of the maximum flux densities at deceleration,  $F_{\nu,\text{max},r}(t_d)/F_{\nu,\text{max},f}$  which can also be expressed as a function of  $\Gamma_0$  and  $R_B$  as

$$\frac{F_{\nu,\text{max},r}(t_d)}{F_{\nu,\text{max},f}} = 0.27 \left( \frac{t_d}{710 \text{ s}} \right)^{-1} = \frac{\Gamma_0 R_B^{1/2}}{1.5 + 5 \xi_0^{-1.3}}, \quad (6)$$

where  $t_d$  is given by eq. (4) and  $\xi_0 = (l/cT_{90}(1+z))^{1/2} \Gamma_0^{-4/3}$ . Equation (6) is derived from numerical results (Harrison & Kobayashi 2013) and using  $F_{\nu,\text{max},r} \propto t^{-1}$  (Zhang et al. 2003). From our modelling we used  $F_{\nu,\text{max},r}(710 \text{ s}) = 0.19$  mJy and  $F_{\nu,\text{max},f} = 0.7$  mJy. The solution to both eqs. (5) and (6) is given by  $\Gamma_0 \simeq 10^4$  and  $R_B = 4.5$ . In spite of the reasonable value for  $R_B$ , this scenario appears to be contrived due to the excessively high value for  $\Gamma_0$ . We therefore consider energy injection in addition to the RS and examine the evidence for a continuously refreshed shock.

##### 4.4.2 An early continuously refreshed shock

In this scenario, we still assume the early time emission originates in the RS, but the shallow decay phase is caused by energy injection until it switches off. The outflow profile is

such that the slower moving material carries more energy in the system continuously re-energizing the ejecta as it is envisaged in the refreshed shock scenario (Sari & Mészáros 2000). We consider that the central engine launches material that has a gradient in velocity. Here the initial deceleration is similar to an impulsive fireball; however the emission is enhanced as slower moving material catches up with decelerated material. This makes the decay of the afterglow component shallower.

From  $\beta = 1.0$  we fitted early dust-corrected  $UBVRi'$  fluxes with the combination of the rising FS as modelled in Section 4.3 (which is negligible at  $t < 800$  s) and of a continuously refreshed RS in the frequency range  $\nu_{m,r} < \nu_{opt} < \nu_{c,r}$  (Sari & Mészáros 2000). The two power-law indices were set to  $\alpha_{r,1} = (12 - 6s + 12\beta)/(2(7 + s))$  and  $\alpha_{r,2} = (73p + 21)/96 = 2.5$  before and after the end of the energy injection at  $t_{r,b}$ , respectively (Kobayashi 2000). The free parameters adopted for the RS contribution were the normalisation, the energy injection end time  $t_{r,b}$ , and the velocity profile index  $s$ ,  $M(> \gamma) \propto \gamma^{-s}$ . We derive an energy injection parameter  $s = 3_{-1.1}^{+1.5}$ , with energy injection ending at the observer time  $t_{r,b} = 930 \pm 400$  s (Table 5). The result is shown in Figure 5, where the refreshed RS (RS+FS total) contribution is shown with dotted (solid) lines. In spite of the very few additional degrees of freedom, the result is satisfactory. The overall quality of the RS+FS model of the entire data set, excluding the X-ray band, improves to  $\chi^2/\text{dof} = 176/128$  (p-value of 0.3%; Table 5), which is still poor, but the overall behaviour displayed by the data is modelled remarkably well. The result shows a negligible dependence on the value of the decay index  $\alpha_{r,2}$ , because at  $t > 800$  s the FS component dominates over the RS. This requires that the amount of energy injected is in the range 2–11  $E_{\gamma,iso}$  and directly affects the value inferred for the radiative efficiency  $\eta_{\gamma}$ , which now lies in the range 0.6–0.8, i.e. higher than estimated in eq. (9).

A final cross-check of this scenario is whether high-latitude emission is affected by energy injection. Although energy injection switches off at the observer time  $t_{r,b}$  s the high-latitude equivalent lab time emission could, in principle, observe energy injection at later observer times, thus affecting the FS modelling. However, the high-latitude component decays more steeply than the line-of-sight component, whose decay index is  $\alpha_{r,2} = 2.5$ , making it essentially unobservable.

Therefore, in summary, we favour the continuously refreshed reverse shock because, unlike the simple reverse shock scenario, extreme values for  $\Gamma_0$  are not required.

Table 5. Best-fitting physical parameters obtained from modelling the multi-afterglow data with the BOXFIT code (van Eerten et al. 2012) combined with an early-time additional component. Frozen values are in square brackets.

Dataset <sup>(a)</sup>	$F_{r,m,i}$ <sup>(b)</sup> (mJy)	$t_{r,b}$ (s)	$s$	$E_{\text{iso}}$ ( $10^{53}$ erg)	$\theta_0$ ( $^\circ$ )	$\theta_{\text{obs}}/\theta_0$	$n$ ( $\text{cm}^{-3}$ )	$p$	$\epsilon_B$ ( $10^{-4}$ )	$\epsilon_e$ ( $10^{-2}$ )	$\xi_N$	$\chi^2/\text{dof}$
(1)	–	–	–	1.8	26	0.96	86	3.6	4.7	8.3	[1.0]	451/162
(2)	–	–	–	$1.9^{+0.7}_{-0.1}$	$23.1^{+0.8}_{-4.1}$	$0.93 \pm 0.01$	$240^{+10}_{-90}$	$3.8 \pm 0.1$	$2.4^{+0.1}_{-0.3}$	$9.3^{+0.5}_{-3.4}$	0.99	173/122
(3)	$0.37^{+0.22}_{-0.14}$ <sup>(c)</sup>	$930 \pm 400$ <sup>(c)</sup>	$3.0^{+1.5}_{-1.1}$ <sup>(c)</sup>	$1.9^{+0.7}_{-0.1}$	$23.1^{+0.8}_{-4.1}$	$0.93 \pm 0.01$	$240^{+10}_{-90}$	$3.8 \pm 0.1$	$2.4^{+0.1}_{-0.3}$	$9.3^{+0.5}_{-3.4}$	0.99	176/128
(3)	$0.36 \pm 0.06$ <sup>(d)</sup>	$710 \pm 200$ <sup>(d)</sup>	–	$1.9^{+0.7}_{-0.1}$	$23.1^{+0.8}_{-4.1}$	$0.93 \pm 0.01$	$240^{+10}_{-90}$	$3.8 \pm 0.1$	$2.4^{+0.1}_{-0.3}$	$9.3^{+0.5}_{-3.4}$	0.99	178/129

<sup>(a)</sup>(1) radio to X,  $t > 800$  s; (2) radio to UV,  $t > 800$  s; (3) radio to UV, all.

<sup>(b)</sup>The normalisation is the flux density at the reference time  $t_{\text{ref}} = 100$  s.

<sup>(c)</sup>An additional refreshed RS component was adopted, where the  $i'$ -band normalisation  $F_{r,m,i}$  and end time of energy injection  $t_{r,b}$  only were left free to vary. We assumed slow cooling for the RS, with  $\nu_{m,r} < \nu_{\text{opt}} < \nu_{c,r}$ .  $M(> \gamma) \propto \gamma^{-s}$  is the ejected mass moving with Lorentz factors greater than  $\gamma$  (Sari & Mészáros 2000).

<sup>(d)</sup>An additional RS component was adopted, where the normalisation  $F_{r,m,i}$  and crossing time of  $\nu_{m,r}$  through the  $i'$ -band only were left free to vary. We assumed slow cooling for the RS.

## 5 DISCUSSION

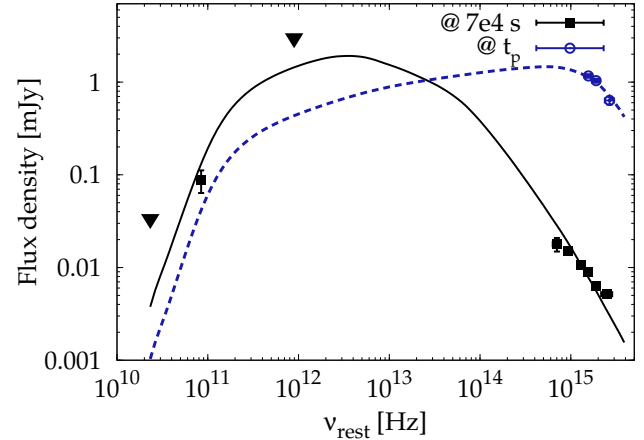
The most notable and best observed feature of GRB 120404A is the optical rebrightening peaking about 40 minutes after the burst, preceded by a nearly constant flux phase, which appears to be a separate component. While the optical peak is observed in a number of well sampled early afterglows, it is generally interpreted as either i) the afterglow onset which marks the deceleration of the ultra-relativistic ejecta by the circumburst environment or ii) the FS radiation coming from a jet as seen from an observer outside the jet cone, i.e. when the viewing angle  $\theta_{\text{obs}}$  and the jet half-opening angle  $\theta_0$  are such that  $\theta_{\text{obs}} > \theta_0$ . In the latter case the peak in the light curve corresponds to the time at which the beaming cone widens enough to become comparable with the angle from the outer edge of the jet, i.e. when  $1/\Gamma \sim (\theta_{\text{obs}} - \theta_0)$  (e.g., Granot et al. 2002; Margutti et al. 2010). In the former case, the peak time is often used to estimate the initial bulk Lorentz factor at deceleration in the thin shell regime (Sari 1997), which is approximately half its value in the coasting phase preceding the deceleration (e.g., Molinari et al. 2007; Melandri et al. 2010; Liang et al. 2013; Panaitescu et al. 2013).

A growing sample of GRBs with exquisite broadband monitoring of the transition from the end of the prompt emission to the afterglow onset is seen to require the combination of distinct components to explain all the observations. In some cases, a double-jet configuration seems to work fairly well (e.g., Berger et al. 2003; Huang et al. 2004; Racusin et al. 2008; de Pasquale et al. 2009, 2011; Filgas et al. 2011; Holland et al. 2012). In other cases, the presence of multiple peaks is explained through the interplay between RS and FS (e.g., Zheng et al. 2012; Virgili et al. 2013, De Pasquale et al. in prep.), as expected for given combinations of values for the microphysics parameters and magnetisation content of the fireball (Kobayashi 2000; Zhang et al. 2003; Zhang & Kobayashi 2005).

Another possibility often discussed is that of energy injection episodes which keep refreshing the FS, whose complex behaviour would track the history of how energy is transferred to the FS as a function of time (e.g., Rossi et al. 2011; Cucchiara et al. 2011). It is not uncommon that some of the best sampled multi-band afterglows require some combination of these mechanisms (Greiner et al. 2013; Virgili et al. 2013).

As for GRB 120404A, while the prompt emission lasts about 50 s, the optical flux nearly constant with time preceding the rise is detected from  $\sim 200$  to  $\sim 800$  s. An internal shock dissipation origin for this early optical emission is disfavoured because, in contrast to some GRBs with contemporaneous optical and  $\gamma$ -ray emission (Kopač et al. 2013), no residual  $\gamma$ -ray activity is detected beyond the first minute in GRB 120404A. Furthermore, the lack of temporal variability of the early optical emission argues against an internal shock dissipation origin (e.g., Nardini et al. 2011). An external origin automatically rules out the interpretation of the optical peak as due to the fireball deceleration.

Unlike the cases above which invoke a hydrodynamical origin for the peak, an alternative interpretation is that connected with the passage of the peak synchrotron frequency through the observed bands, which is chromatic (Sari et al.



**Figure 6.** Rest-frame SEDs at peak (circles and dashed line) and at 70 ks (squares and solid lines) including radio and optical measurements. Optical points have been corrected for dust extinction using  $A_V = 0.22$  mag for a MW profile. Upside-down triangles are  $3\sigma$  upper limits. The thick solid line shows the best-fitting model based on hydrodynamical simulations.

1998). Although observational evidence for this was reported only for a few cases, this might be more common than what has currently been found, simply because many data sets lack well-sampled, simultaneous multi-colour coverage (Oates et al. 2011; Zheng et al. 2012, de Pasquale et al. in prep.).

Analogous considerations apply to the difficulty of collecting evidence for a jet break in the afterglow light curves of many GRBs (Racusin et al. 2009), whose signature can be more elusive than a clear-cut achromatic break, especially when different effects come into play simultaneously.

The high quality of the broadband observations of GRB 120404A show the power of more comprehensive datasets for severely constraining the energetics, geometry, and microphysics parameters of the afterglow emission in conjunction with the realistic BOXFIT fitting code based on hydrodynamics simulations (van Eerten et al. 2012). As noted above, this code is applicable when most of the fireball energy has already been transferred to the ISM, so is used separately to the early time modelling of the reverse shock emission. In the following sections, we discuss the implications derived from our modelling: in particular, implications for GRB jet geometries and the theoretical aspects of the code that could be improved to allow better modelling of the data.

### 5.1 The nature of the afterglow peak

The afterglow peak is the result of the passage of  $\nu_{\text{m},f}$  through the optical bands (Zhang et al. 2003), as was the case for other exquisitely sampled GRBs (e.g., Zheng et al. 2012). To show this, we obtained two SEDs: one is measured at the peak time, the other refers to 70 ks after the burst. Figure 6 displays the two SEDs together with the models corresponding to the set of best-fitting parameters obtained above. Noteworthy is how our radio measurements are fully consistent with the broadband evolution and clearly show the self-absorbed regime of the synchrotron spectrum in the late SED.



The model predicts a steeper slope than that exhibited by the optical data points. This is connected with the global cooling approximation issue: due to this, the model in Figure 6 places the cooling frequency  $\nu_{c,f}$  below the optical points, while a correct treatment of the local cooling would place it well above (see Fig. 4 of van Eerten et al. 2010), thus explaining both the common spectral regime between optical and X-rays as well as the normalisation of the observed X-ray flux. In this case, the need for matching the radio and the optical fluxes with a more plausible optical slope than the best-fitting model shown in Fig. 6 would require the FS peak flux density in frequency,  $F_{\nu,\max,f}$ , to decrease with time. However, this clashes with the  $F_{\nu,\max,f} \propto t^0$  evolution expected in the homogeneous medium scenario assumed by the BOXFIT code. For a wind density profile, it is  $F_{\nu,\max,f} \propto t^{-1/2}$  (Chevalier & Li 1999). In Section 4.2 we argued that a wind-like density profile is not ruled out from the expected closure relation at late times. This suggests that a local cooling treatment combined with the possibility of wind-like environments could help to improve the modelling capabilities of the BOXFIT code. A repeat run *without* cooling modelled the optical slope slightly better, but did not improve the quality of the overall fit and caused a significantly worse fit to the radio data. This therefore further confirms the need for a code development to include more realistic cooling and density profiles.

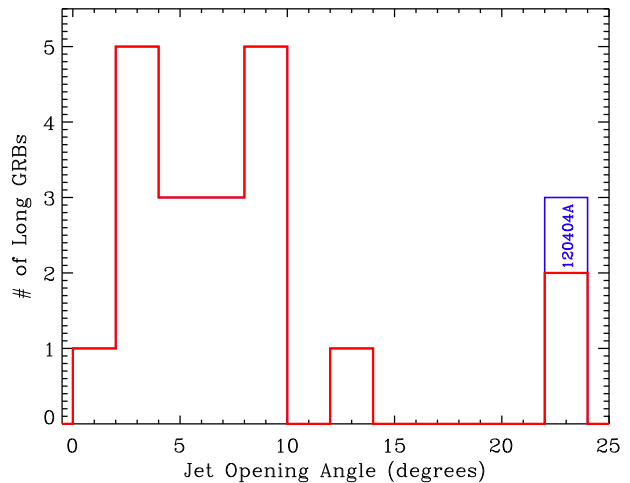
## 5.2 An edge-on view of a wide jet

Excluding the X-ray data, the best-fitting parameters do not change in essence and confirm the basic picture of a relatively wide jet viewed from a direction close to the edge but still inside the jet cone. Although the true  $\theta_0$  distribution is difficult to derive from observations because of the numerous selection effects and observational biases (Bloom et al. 2003; Lu et al. 2012), past data suggest the existence of comparably wide jets (Bloom et al. 2003; Fong et al. 2012), as clearly shown in Fig. 7 which displays the  $\theta_0$  distribution for a number of *Swift* long GRBs. The FS microphysics parameters are within the range of typical values estimated for other GRBs (Panaitescu & Kumar 2002), apart from the high value of  $p$ , which is likely to be connected with the afore-mentioned global cooling issue. The ISM particle density  $n$  is high, but still within the high tail of the distribution.

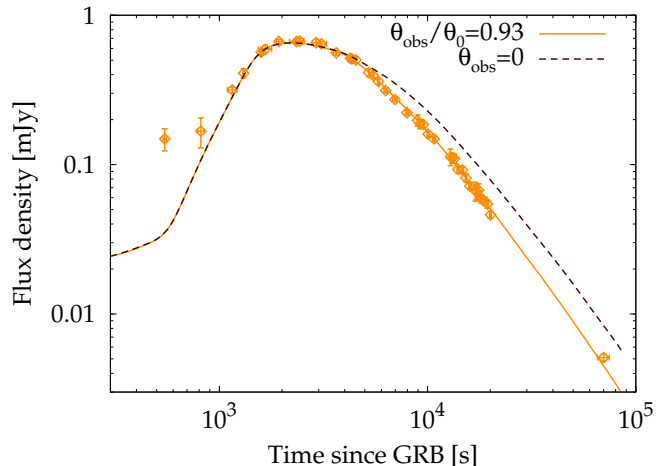
The quality of the data set, combined with the capability of the fitting code, allowed us to constrain both  $\theta_0$  and  $\theta_{\text{obs}}$ , as shown by Figure 8, which compares the observed data and model with what an on-axis observer would have observed. The accurately modelled shape of the multi-band light curves is sensitive to the missing flux from the jet edge closer to the observer sightline, when  $1/\Gamma \sim (\theta_0 - \theta_{\text{obs}})$ . The time at which this is observed can be clearly estimated from Fig. 8 around  $t_{j,1} \simeq 5$  ks, and corresponds to

$$\theta_0 - \theta_{\text{obs}} = 2.7^\circ \left( \frac{t_{j,1} \zeta}{5 \text{ ks}} \right)^{3/8} \left( \frac{n_0}{244} \right)^{1/8} \left( \frac{E_{\text{iso},53}}{1.9} \right)^{-1/8}, \quad (7)$$

as expected from the corresponding best-fitting values ( $\zeta = 3.876/(1+z)$ ). One should expect to also see the final and steep drop in the decay slope associated with the further jet edge, i.e. when it is  $\Gamma \sim 1/(\theta_0 + \theta_{\text{obs}})$ . This is to be expected at the time  $t_{j,2}$



**Figure 7.** Jet half-opening angle distribution for a number of *Swift* long GRBs. GRB 120404A lies in the wide-angle tail.



**Figure 8.** Light curve in the  $i'$ -band. The solid line shows the best-fitting solution obtained for a jet opening angle  $\theta_0 = 23^\circ$  and viewing angle  $\theta_{\text{obs}} = 21^\circ$ . The dashed line shows what an on-axis observer would have observed for the same GRB.

$$t_{j,2} = \left( \frac{\theta_0 + \theta_{\text{obs}}}{\theta_0 - \theta_{\text{obs}}} \right)^{8/3} t_{j,1} \simeq 100 \text{ days}, \quad (8)$$

which is far beyond the coverage of our data set.

Another interesting result from the afterglow modelling is the possibility to constrain the radiative efficiency  $\eta_\gamma$  of the prompt emission (Zhang et al. 2007),

$$\eta_\gamma = \frac{E_{\gamma,\text{iso}}}{E_{\text{iso}} + E_{\gamma,\text{iso}}} = 0.3 \pm 0.1, \quad (9)$$

which is consistent with typical expectations from internal shocks (Beloborodov 2000; Guetta et al. 2001; Kobayashi & Sari 2001) as well as with values measured for other GRBs (Zhang et al. 2007). However, the value of 0.3 for  $\eta_\gamma$  becomes a lower limit if the early optical emission is due to prolonged internal activity, such as the case considered in Section 4.4.2. It is also possible to calculate the total kinetic energy corrected for collimation,

$$E_K = E_{\text{iso}} (1 - \cos \theta_0) = 1.5 \times 10^{52} \text{ erg}. \quad (10)$$

In addition to the global cooling approximation issue, other

limitations of the BOXFIT code concern the jet angular structure, assumed to be homogeneous with sharp boundaries, as well as the assumption of a homogeneous instead of a wind-like density profile of the surrounding medium, as argued in Section 5.1. Adopting more realistic jet structures can possibly lead to further improvements in the data modelling (e.g., Rossi et al. 2002; Zhang & Mészáros 2002; Zhang et al. 2004; Guetta et al. 2005; Granot 2005; Panaitescu & Vestrand 2008).

## 6 CONCLUSIONS

We presented the first high-quality broadband data set of a GRB fitted with a realistic code developed and made available by van Eerten et al. (2012). This code was built upon hydrodynamical simulations and not merely on analytical approximations, to model the afterglow evolution from radio to high-energies. In particular, we found that synchrotron radiation expected from the forward shock propagating through a constant medium within the shape of a homogeneous jet with opening angle  $\theta_0 = 23.1^{+0.8}_{-4.1}$  degrees viewed almost edge-on,  $\theta_{\text{obs}} = (0.93 \pm 0.01) \theta_0$  can reproduce very accurately the well sampled multi-band light curves of GRB 120404A.

We constrained the microphysics of the relativistic shock, which gives rise to the forward shock emission and a-posteriori highlights the importance of adopting a local cooling treatment in place of the commonly adopted global cooling in modelling the flux above the cooling break. These results unambiguously suggest that future theoretical developments and refinements of models like the one we adopted here should provide a more realistic description of the local cooling and its impact at high energies, and should also include wind-like density profiles in addition to the already treated homogeneous case.

The optical peak observed a few thousands seconds after the burst, which is a common property among many GRB early afterglows, shows evidence for a chromatic character and is satisfactorily explained by the crossing of the FS synchrotron peak frequency  $\nu_{\text{m,f}}$  through the observed bands. This excludes the interpretation of the peak as the time of fireball deceleration, which appears to be contrived due to the initial constant optical flux density,<sup>7</sup> and highlights the need for caution in automatically interpreting all optical peaks as deceleration signatures.

We instead successfully modelled the same early optical emission in terms of a reverse shock which is continuously refreshed by a velocity distribution of the ejecta for about  $10^3$  s after the burst. The fireball deceleration occurs in the intermediate/thick shell regime and highlights the importance of correct treatment to evaluate the relative strength between forward and reverse shock emission to constrain the fireball magnetisation and the initial bulk Lorentz factor (Harrison & Kobayashi 2013).

<sup>7</sup> To be explained in terms of fireball deceleration, it would require a non-uniform shell with the innermost part carrying a significant fraction of the shell energy, so that the interstellar medium would receive a major impulsive energy injection at the end of the reverse shock crossing.

The total released isotropic-equivalent and collimation-corrected energy,  $\sim 2\times$  and  $\sim 0.1\times 10^{53}$  erg respectively, allowed us to directly estimate the radiative efficiency of the prompt emission, which is found to be either  $\eta_\gamma = 0.7 \pm 0.15$  or  $\eta_\gamma = 0.3 \pm 0.1$ , depending on whether the early optical emission is the result or not of prolonged energy injection into the fireball.

Our capability of constraining the jet geometry provides new insight into the long-standing difficulty of measuring clear-cut jet breaks for GRBs in the *Swift* era and emphasises the role played by an off-axis angle when this is comparable to the jet opening angle. Moreover, our results add strong support for the growing evidence that comparably wide jets as viewed from comparably large off-axis directions are probably more common than previously inferred from simple analytical descriptions (Ryan et al. 2013).

Overall, the entire data set is well explained with a combination of reverse and forward shocks in a relatively wide homogeneous jet viewed nearly edge-on plus energy injection. This seems to be a natural choice in other GRBs similar to GRB 120404A, in which the prompt emission is characterised by a very simple FRED.

## ACKNOWLEDGMENTS

C.G. acknowledges ASI for financial support (ASI-INAF contract I/088/06/0) and University of Ferrara for use of the local HPC facility co-funded by the ‘‘Large-Scale Facilities 2010’’ project (grant 7746/2011). C.G. thanks Hendrik van Eerten for useful discussions. C.G.M. thanks the Royal Society, Wolfson Foundation and Science and Technology Facilities Council for support. E. B. and B. A. Z. were supported in part by the National Science Foundation under Grant AST-1107973. B. A. Z. is supported by an NSF Astronomy and Astrophysics Postdoctoral Fellowship under award AST-1302954. A.G. acknowledges funding from the Slovenian Research Agency and from the Centre of Excellence for Space Sciences and Technologies SPACE-SI, an operation partly financed by the European Union, the European Regional Development Fund, and the Republic of Slovenia, Ministry of Education, Science and Sport. Development of the Boxfit code was supported in part by NASA through grant NNX10AF62G issued through the Astrophysics Theory Program and by the NSF through grant AST-1009863. The NRAO is a facility of the NSF operated under cooperative agreement by AUI. Proposal VLA 12A-394 is acknowledged. The SMA is a joint project between SAO and the ASIAA and is funded by the Smithsonian Institution and the Academia Sinica. Part of the funding for GROND (both hardware as well as personnel) was generously granted from the Leibniz-Prize to Prof. G. Hasinger (DFG grant HA 1850/28-1). DARK is funded by the DNRf. We thank the anonymous referee for helpful comments that improved the paper.

## REFERENCES

- Barthelmy S. D. et al., 2005, *Space Sci. Rev.*, 120, 143
- Beloborodov A. M., 2000, *ApJ*, 539, L25
- Berger E. et al., 2003, *Nature*, 426, 154

- Blandford R. D., McKee C. F., 1976, *Physics of Fluids*, 19, 1130
- Bloom J. S., Frail D. A., Kulkarni S. R., 2003, *ApJ*, 594, 674
- Breeveld A. A., Stratta G., 2012, *GRB Coordinates Network*, 13226, 1
- Burrows D. N. et al., 2005, *Space Sci. Rev.*, 120, 165
- Campana S. et al., 2012, *MNRAS*, 421, 1697
- Cardelli J. A., Clayton G. C., Mathis J. S., 1989, *ApJ*, 345, 245
- Chevalier R. A., Li Z.-Y., 1999, *ApJ*, 520, L29
- Covino S. et al., 2010, *A&A*, 521, A53
- Cucchiara A. et al., 2011, *ApJ*, 743, 154
- Cucchiara A., Tanvir N. R., 2012, *GRB Coordinates Network*, 13217, 1
- de Pasquale M. et al., 2009, *MNRAS*, 392, 153
- de Pasquale M. et al., 2011, *Advances in Space Research*, 48, 1411
- D'Elia V., Goldoni P., Malesani D., Tanvir N. R., Fynbo J. P. U., Melandri A., 2012, *GRB Coordinates Network*, 13227, 1
- Dougherty S. M., Perley R. A., 2010, in *Astronomical Society of the Pacific Conference Series*, Vol. 438, *Astronomical Society of the Pacific Conference Series*, Kothes R., Landecker T. L., Willis A. G., eds., p. 421
- Evans P. A. et al., 2009, *MNRAS*, 397, 1177
- Filgas R. et al., 2011, *A&A*, 526, A113
- Fong W. et al., 2012, *ApJ*, 756, 189
- Fukugita M., Ichikawa T., Gunn J. E., Doi M., Shimasaku K., Schneider D. P., 1996, *AJ*, 111, 1748
- Fukugita M., Shimasaku K., Ichikawa T., 1995, *PASP*, 107, 945
- Fynbo J. P. U. et al., 2009, *ApJS*, 185, 526
- Fynbo J. P. U., Malesani D., Jakobsson P., 2012, *Long Gamma-Ray Burst Host Galaxies and their Environments*, pp. 269–301
- Gao H., Lei W.-H., Zou Y.-C., Wu X.-F., Zhang B., 2013, in press, *ArXiv* 1310.2181
- Gehrels N., Mészáros P., 2012, *Science*, 337, 932
- Gendre B. et al., 2010, *MNRAS*, 405, 2372
- Gomboc A. et al., 2009, in *American Institute of Physics Conference Series*, Vol. 1133, *American Institute of Physics Conference Series*, Meegan C., Kouveliotou C., Gehrels N., eds., pp. 145–150
- Granot J., 2005, *ApJ*, 631, 1022
- Granot J., Panaitescu A., Kumar P., Woosley S. E., 2002, *ApJ*, 570, L61
- Greiner J. et al., 2008, *PASP*, 120, 405
- Greiner J. et al., 2011, *A&A*, 526, A30
- Greiner J. et al., 2013, in press, *ArXiv* 1304.5852
- Greisen E. W., 2003, *Information Handling in Astronomy - Historical Vistas*, 285, 109
- Guetta D., Granot J., Begelman M. C., 2005, *ApJ*, 622, 482
- Guetta D., Spada M., Waxman E., 2001, *ApJ*, 557, 399
- Guidorzi C. et al., 2009, *A&A*, 499, 439
- Guidorzi C. et al., 2011, *MNRAS*, 417, 2124
- Guidorzi C., Melandri A., Japelj J., 2012, *GRB Coordinates Network*, 13209, 1
- Guidorzi C. et al., 2006, *PASP*, 118, 288
- Harrison R., Kobayashi S., 2013, *ApJ*, 772, 101
- Ho P. T. P., Moran J. M., Lo K. Y., 2004, *ApJ*, 616, L1
- Holland S. T. et al., 2012, *ApJ*, 745, 41
- Hook I. M., Jørgensen I., Allington-Smith J. R., Davies R. L., Metcalfe N., Murowinski R. G., Crampton D., 2004, *PASP*, 116, 425
- Huang Y. F., Wu X. F., Dai Z. G., Ma H. T., Lu T., 2004, *ApJ*, 605, 300
- Jin Z. P., Fan Y. Z., 2007, *MNRAS*, 378, 1043
- Jordi K., Grebel E. K., Ammon K., 2006, *A&A*, 460, 339
- Kalberla P. M. W., Burton W. B., Hartmann D., Arnal E. M., Bajaja E., Morras R., Pöppel W. G. L., 2005, *A&A*, 440, 775
- Kaneko Y., Preece R. D., Briggs M. S., Paciesas W. S., Meegan C. A., Band D. L., 2006, *ApJS*, 166, 298
- Kobayashi S., 2000, *ApJ*, 545, 807
- Kobayashi S., Piran T., Sari R., 1999, *ApJ*, 513, 669
- Kobayashi S., Sari R., 2001, *ApJ*, 551, 934
- Kopač D. et al., 2013, *ApJ*, 772, 73
- Krühler T. et al., 2009, *A&A*, 508, 593
- Kumar B., Bhatt V. K., Pandey S. B., 2012, *GRB Coordinates Network*, 13234, 1
- Liang E.-W. et al., 2013, *ApJ*, 774, 13
- Lu R.-J., Wei J.-J., Qin S.-F., Liang E.-W., 2012, *ApJ*, 745, 168
- Margutti R. et al., 2010, *MNRAS*, 402, 46
- Margutti R. et al., 2013, *MNRAS*, 428, 729
- Melandri A. et al., 2010, *ApJ*, 723, 1331
- Melandri A. et al., 2008, *ApJ*, 686, 1209
- Mészáros P., 2006, *Reports on Progress in Physics*, 69, 2259
- Molinari E. et al., 2007, *A&A*, 469, L13
- Morrison R., McCammon D., 1983, *ApJ*, 270, 119
- Mundell C. G. et al., 2007, *ApJ*, 660, 489
- Nardini M. et al., 2011, *A&A*, 531, A39
- Norris J. P., Bonnell J. T., Kazanas D., Scargle J. D., Hakkila J., Giblin T. W., 2005, *ApJ*, 627, 324
- Norris J. P., Nemiroff R. J., Bonnell J. T., Scargle J. D., Kouveliotou C., Paciesas W. S., Meegan C. A., Fishman G. J., 1996, *ApJ*, 459, 393
- Oates S. R. et al., 2011, *MNRAS*, 412, 561
- Osborne J. P., Beardmore A. P., Evans P. A., Goad M. R., 2012, *GRB Coordinates Network*, 13218, 1
- Panaitescu A., Kumar P., 2002, *ApJ*, 571, 779
- Panaitescu A., Vestrand W. T., 2008, *MNRAS*, 387, 497
- Panaitescu A., Vestrand W. T., Woźniak P., 2013, *MNRAS*, 433, 759
- Pei Y. C., 1992, *ApJ*, 395, 130
- Perley D. A. et al., 2009, *AJ*, 138, 1690
- Perley R. A., Chandler C. J., Butler B. J., Wrobel J. M., 2011, *ApJ*, 739, L1
- Prochaska J. X., Chen H.-W., Bloom J. S., 2006, *ApJ*, 648, 95
- Racusin J. L. et al., 2008, *Nature*, 455, 183
- Racusin J. L. et al., 2009, *ApJ*, 698, 43
- Roming P. W. A. et al., 2005, *Space Sci. Rev.*, 120, 95
- Roming P. W. A. et al., 2006, *ApJ*, 652, 1416
- Rossi A. et al., 2011, *A&A*, 529, A142
- Rossi E., Lazzati D., Rees M. J., 2002, *MNRAS*, 332, 945
- Ryan G., van Eerten H., MacFadyen A., 2013, *arXiv* 1307.6334
- Sakamoto T. et al., 2011, *ApJS*, 195, 2
- Sakamoto T. et al., 2009, *ApJ*, 693, 922
- Sari R., 1997, *ApJ*, 489, L37
- Sari R., Mészáros P., 2000, *ApJ*, 535, L33

- Sari R., Piran T., Narayan R., 1998, *ApJ*, 497, L17  
Savaglio S., 2012, *ArXiv* 1212.0144  
Schlegel D. J., Finkbeiner D. P., Davis M., 1998, *ApJ*, 500, 525  
Spergel D. N. et al., 2003, *ApJS*, 148, 175  
Spitkovsky A., 2008, *ApJ*, 682, L5  
Stratta G. et al., 2012, *GRB Coordinates Network*, 13208, 1  
Sudilovsky V., Rau A., Greiner J., 2012, *GRB Coordinates Network*, 13229, 1  
Tristram P. J., Fukui A., Sako T., 2012, *GRB Coordinates Network*, 13228, 1  
Ukwatta T. N. et al., 2012, *GRB Coordinates Network*, 13220, 1  
van Dokkum P. G., 2001, *PASP*, 113, 1420  
van Eerten H., 2013, in press, *ArXiv* 1309.3869  
van Eerten H., van der Horst A., MacFadyen A., 2012, *ApJ*, 749, 44  
van Eerten H., Zhang W., MacFadyen A., 2010, *ApJ*, 722, 235  
Vernet J. et al., 2011, *A&A*, 536, A105  
Virgili F. J. et al., 2013, in press, *ArXiv* 1310.0313  
Vreeswijk P. M. et al., 2007, *A&A*, 468, 83  
Yost S. A. et al., 2007a, *ApJ*, 669, 1107  
Yost S. A. et al., 2007b, *ApJ*, 657, 925  
Zauderer A., Laskar T., Berger E., 2012, *GRB Coordinates Network*, 13231, 1  
Zauderer B. A. et al., 2013, *ApJ*, 767, 161  
Zhang B., Dai X., Lloyd-Ronning N. M., Mészáros P., 2004, *ApJ*, 601, L119  
Zhang B., Kobayashi S., 2005, *ApJ*, 628, 315  
Zhang B., Kobayashi S., Mészáros P., 2003, *ApJ*, 595, 950  
Zhang B. et al., 2007, *ApJ*, 655, 989  
Zhang B., Mészáros P., 2002, *ApJ*, 571, 876  
Zheng W. et al., 2012, *ApJ*, 751, 90

Table 6. Photometric data set of the NIR/optical afterglow of GRB 120404A.

Time <sup>a</sup> (s)	Telescope	Exp. (s)	Filter	Magnitude <sup>b</sup>	Flux <sup>c</sup> ( $\mu$ Jy)	Time <sup>a</sup> (s)	Telescope	Exp. (s)	Filter	Magnitude <sup>b</sup>	Flux <sup>c</sup> ( $\mu$ Jy)
70023	GROND	4592	$K^d$	> 20.5	< 23.3	9134	FTS	30	$R$	$18.36 \pm 0.08$	$157.6 \pm 11.2$
70023	GROND	4592	$H^d$	$21.1 \pm 0.2$	$13.5 \pm 2.3$	9428	FTS	60	$R$	$18.34 \pm 0.06$	$160.5 \pm 8.6$
70023	GROND	4592	$J^d$	$21.4 \pm 0.1$	$10.4 \pm 0.9$	9873	FTS	120	$R$	$18.46 \pm 0.05$	$143.7 \pm 6.5$
70023	GROND	4592	$z'$	$22.09 \pm 0.06$	$5.7 \pm 3.1$	10512	FTS	180	$R$	$18.61 \pm 0.05$	$125.2 \pm 5.6$
25370	ARIES	900	$I$	$19.71 \pm 0.17$	$36.4 \pm 5.3$	12619	FTS	30	$R$	$18.88 \pm 0.11$	$97.6 \pm 9.4$
547	FTN	10	$i'$	$18.58 \pm 0.20$	$148.6 \pm 25.0$	13072	FTS	30	$R$	$18.96 \pm 0.11$	$90.7 \pm 8.7$
816	FTN	30	$i'$	$18.45 \pm 0.28$	$167.5 \pm 38.1$	13352	FTS	60	$R$	$18.89 \pm 0.09$	$96.7 \pm 7.7$
1154	FTN	60	$i'$	$17.76 \pm 0.05$	$316.2 \pm 14.2$	13780	FTS	120	$R$	$19.04 \pm 0.07$	$84.2 \pm 5.3$
1308	FTS	10	$i'$	$17.48 \pm 0.08$	$409.3 \pm 29.1$	14469	FTS	180	$R$	$19.09 \pm 0.05$	$80.4 \pm 3.6$
1589	FTS	30	$i'$	$17.13 \pm 0.05$	$565.0 \pm 25.4$	15092	FTS	120	$R$	$19.23 \pm 0.08$	$70.7 \pm 5.0$
1662	FTN	120	$i'$	$17.08 \pm 0.07$	$591.6 \pm 36.9$	15724	FTS	180	$R$	$19.24 \pm 0.07$	$70.1 \pm 4.4$
1932	FTS	60	$i'$	$16.95 \pm 0.04$	$666.8 \pm 24.1$	16689	FTS	30	$R$	$19.50 \pm 0.15$	$55.1 \pm 7.1$
2352	FTN	180	$i'$	$16.95 \pm 0.05$	$666.8 \pm 30.0$	17177	FTS	30	$R$	$19.38 \pm 0.15$	$61.6 \pm 7.9$
2432	FTS	120	$i'$	$16.94 \pm 0.05$	$673.0 \pm 30.3$	17480	FTS	60	$R$	$19.66 \pm 0.19$	$47.6 \pm 7.6$
2918	FTN	120	$i'$	$16.97 \pm 0.06$	$654.7 \pm 35.2$	17919	FTS	120	$R$	$19.54 \pm 0.08$	$53.1 \pm 3.8$
3093	FTS	180	$i'$	$16.99 \pm 0.04$	$642.7 \pm 23.2$	18549	FTS	180	$R$	$19.66 \pm 0.07$	$47.6 \pm 3.0$
3643	FTS	120	$i'$	$17.14 \pm 0.04$	$559.8 \pm 20.2$	19181	FTS	120	$R$	$19.70 \pm 0.07$	$45.9 \pm 2.9$
4256	FTN	10	$i'$	$17.23 \pm 0.06$	$515.3 \pm 27.7$	19824	FTS	180	$R$	$19.76 \pm 0.05$	$43.4 \pm 2.0$
4331	FTS	180	$i'$	$17.24 \pm 0.03$	$510.5 \pm 13.9$	24668	ARIES	1200	$R$	$20.37 \pm 0.15$	$24.7 \pm 3.2$
4526	FTN	30	$i'$	$17.26 \pm 0.05$	$501.2 \pm 22.6$	57288	VLT/XS	30	$R$	$21.4 \pm 0.3$	$9.6 \pm 2.3$
5219	FTS	10	$i'$	$17.47 \pm 0.07$	$413.1 \pm 25.8$	70023	GROND	4592	$r'$	$22.61 \pm 0.06$	$3.8 \pm 0.2$
5484	FTS	30	$i'$	$17.52 \pm 0.05$	$394.5 \pm 17.8$	471	FTN	10	$V$	$18.70 \pm 0.30$	$139.9 \pm 33.8$
5810	FTS	60	$i'$	$17.62 \pm 0.05$	$359.8 \pm 16.2$	878	UVOT	400	$V$	$18.83 \pm 0.33$	$124.1 \pm 32.5$
6294	FTS	120	$i'$	$17.77 \pm 0.04$	$313.3 \pm 11.3$	1237	FTS	10	$V$	$17.97 \pm 0.16$	$274.1 \pm 37.6$
6970	FTS	180	$i'$	$17.92 \pm 0.04$	$272.9 \pm 9.9$	4191	FTN	10	$V$	$17.61 \pm 0.09$	$381.9 \pm 30.4$
7956	FTS	120	$i'$	$18.14 \pm 0.04$	$222.9 \pm 8.1$	4832	UVOT	200	$V$	$17.74 \pm 0.10$	$338.8 \pm 29.8$
8957	FTS	10	$i'$	$18.27 \pm 0.10$	$197.7 \pm 17.4$	5144	FTS	10	$V$	$17.74 \pm 0.12$	$338.8 \pm 35.4$
9219	FTS	30	$i'$	$18.33 \pm 0.08$	$187.1 \pm 13.3$	8892	FTS	10	$V$	$18.48 \pm 0.21$	$171.4 \pm 30.1$
9552	FTS	60	$i'$	$18.34 \pm 0.05$	$185.4 \pm 8.3$	8941	UVOT	5545	$V$	$18.90 \pm 0.13$	$116.4 \pm 13.1$
10061	FTS	120	$i'$	$18.50 \pm 0.05$	$160.0 \pm 7.2$	11992	UVOT	550	$V$	$19.42 \pm 0.18$	$72.1 \pm 11.0$
10754	FTS	180	$i'$	$18.58 \pm 0.05$	$148.6 \pm 6.7$	14858	FTS	20	$V$	$19.57 \pm 0.35$	$62.8 \pm 17.3$
12889	FTS	10	$i'$	$18.88 \pm 0.15$	$112.7 \pm 14.5$	70023	GROND	4592	$g'$	$23.1 \pm 0.1$	$2.5 \pm 0.2$
13151	FTS	30	$i'$	$18.90 \pm 0.09$	$110.7 \pm 8.8$	413	FTN	10	$B$	$19.43 \pm 0.27$	$87.8 \pm 19.3$
13473	FTS	60	$i'$	$18.91 \pm 0.08$	$109.7 \pm 7.8$	649	FTN	30	$B$	$19.38 \pm 0.24$	$91.9 \pm 18.2$
13967	FTS	120	$i'$	$19.09 \pm 0.06$	$92.9 \pm 5.0$	891	UVOT	572	$B$	$19.05 \pm 0.20$	$124.6 \pm 21.0$
14710	FTS	180	$i'$	$19.10 \pm 0.05$	$92.1 \pm 4.1$	922	FTN	60	$B$	$19.16 \pm 0.12$	$112.6 \pm 11.8$
15276	FTS	120	$i'$	$19.23 \pm 0.07$	$81.7 \pm 5.1$	1340	UVOT	20	$B$	$18.32 \pm 0.25$	$244.0 \pm 50.2$
15967	FTS	180	$i'$	$19.37 \pm 0.05$	$71.8 \pm 3.2$	1402	FTS	30	$B$	$18.21 \pm 0.30$	$270.0 \pm 65.2$
16971	FTS	10	$i'$	$19.45 \pm 0.17$	$66.7 \pm 9.7$	1691	FTS	60	$B$	$18.16 \pm 0.13$	$282.8 \pm 31.9$
17256	FTS	30	$i'$	$19.46 \pm 0.13$	$66.1 \pm 7.5$	1874	FTN	180	$B$	$18.19 \pm 0.39$	$275.0 \pm 83.0$
17598	FTS	60	$i'$	$19.44 \pm 0.12$	$67.3 \pm 7.0$	2080	FTS	120	$B$	$17.95 \pm 0.08$	$343.1 \pm 24.4$
18108	FTS	120	$i'$	$19.58 \pm 0.07$	$59.2 \pm 3.7$	2567	FTN	120	$B$	$18.05 \pm 0.11$	$312.9 \pm 30.1$
18796	FTS	180	$i'$	$19.62 \pm 0.07$	$57.0 \pm 3.6$	2628	FTS	180	$B$	$18.00 \pm 0.07$	$327.6 \pm 20.5$
19379	FTS	120	$i'$	$19.67 \pm 0.07$	$54.5 \pm 3.4$	3297	FTS	120	$B$	$18.16 \pm 0.10$	$282.8 \pm 24.9$
20053	FTS	180	$i'$	$19.85 \pm 0.06$	$46.1 \pm 2.5$	3858	FTS	180	$B$	$18.28 \pm 0.08$	$253.2 \pm 18.0$
70023	GROND	4592	$i'$	$22.24 \pm 0.06$	$5.1 \pm 2.7$	4131	FTN	10	$B$	$18.38 \pm 0.11$	$230.9 \pm 22.2$
246	FTN	10	$R$	$18.36 \pm 0.13$	$157.6 \pm 17.8$	4354	FTN	30	$B$	$18.52 \pm 0.08$	$203.0 \pm 14.4$
283	FTN	10	$R$	$18.40 \pm 0.16$	$151.9 \pm 20.8$	5200	FTS	40	$B$	$18.60 \pm 0.27$	$188.5 \pm 41.5$
323	FTN	10	$R$	$18.25 \pm 0.21$	$174.4 \pm 30.7$	5582	FTS	60	$B$	$18.87 \pm 0.18$	$147.0 \pm 22.5$
730	FTN	30	$R$	$18.39 \pm 0.23$	$153.3 \pm 29.3$	5652	UVOT	200	$B$	$18.65 \pm 0.10$	$180.1 \pm 15.8$
1001	FTS	10	$R$	$18.03 \pm 0.13$	$213.5 \pm 24.1$	5954	FTS	120	$B$	$18.78 \pm 0.11$	$159.7 \pm 15.4$
1036	FTN	60	$R$	$17.97 \pm 0.07$	$225.7 \pm 14.1$	6509	FTS	180	$B$	$18.98 \pm 0.11$	$132.9 \pm 12.8$
1041	FTS	10	$R$	$18.01 \pm 0.13$	$217.5 \pm 24.5$	7088	UVOT	200	$B$	$18.86 \pm 0.12$	$148.4 \pm 15.5$
1082	FTS	10	$R$	$17.92 \pm 0.15$	$236.3 \pm 30.5$	7605	FTS	120	$B$	$19.21 \pm 0.15$	$107.5 \pm 13.9$
1479	FTN	120	$R$	$17.16 \pm 0.09$	$475.8 \pm 37.9$	8173	FTS	180	$B$	$19.31 \pm 0.12$	$98.0 \pm 10.3$
1500	FTS	30	$R$	$17.09 \pm 0.05$	$507.5 \pm 22.8$	9088	FTS	100	$B$	$19.52 \pm 0.20$	$80.8 \pm 13.6$
1806	FTS	60	$R$	$16.98 \pm 0.06$	$561.7 \pm 30.2$	9699	FTS	120	$B$	$19.28 \pm 0.17$	$100.8 \pm 14.6$
2106	FTN	180	$R$	$16.90 \pm 0.03$	$604.6 \pm 16.5$	10266	FTS	180	$B$	$19.76 \pm 0.16$	$64.8 \pm 8.9$
2249	FTS	120	$R$	$16.87 \pm 0.03$	$621.5 \pm 16.9$	13208	FTS	220	$B$	$20.24 \pm 0.20$	$41.6 \pm 7.0$
2735	FTN	120	$R$	$16.92 \pm 0.08$	$593.6 \pm 42.2$	14166	FTS	180	$B$	$20.39 \pm 0.22$	$36.3 \pm 6.7$
2857	FTS	180	$R$	$16.89 \pm 0.03$	$610.2 \pm 16.6$	15611	FTS	540	$B$	$20.75 \pm 0.20$	$26.0 \pm 4.4$
3470	FTS	120	$R$	$17.02 \pm 0.03$	$541.3 \pm 14.8$	17113	UVOT	907	$B$	$20.51 \pm 0.16$	$32.5 \pm 4.4$
3989	FTN	30	$R$	$17.15 \pm 0.04$	$480.3 \pm 17.4$	18243	FTS	700	$B$	$20.95 \pm 0.20$	$21.6 \pm 3.6$
4090	FTS	180	$R$	$17.16 \pm 0.03$	$475.8 \pm 13.0$	474	UVOT	246	$U$	$20.06 \pm 0.26$	$17.6 \pm 4.2$
4436	FTN	30	$R$	$17.26 \pm 0.04$	$434.0 \pm 15.7$	1039	UVOT	58	$U$	$19.35 \pm 0.36$	$33.7 \pm 11.3$
4950	FTS	30	$R$	$17.38 \pm 0.05$	$388.6 \pm 17.5$	5447	UVOT	197	$U$	$18.97 \pm 0.15$	$47.9 \pm 6.4$
5398	FTS	30	$R$	$17.52 \pm 0.05$	$341.6 \pm 15.4$	6883	UVOT	197	$U$	$19.49 \pm 0.20$	$29.6 \pm 5.6$
5698	FTS	60	$R$	$17.60 \pm 0.05$	$317.3 \pm 14.3$	28449	UVOT	396	$U$	> 21.0	< 7.6
6121	FTS	120	$R$	$17.69 \pm 0.04$	$292.1 \pm 10.6$	104796	UVOT	1678	$U$	> 21.8	< 3.4
6738	FTS	180	$R$	$17.84 \pm 0.04$	$254.4 \pm 9.2$	173817	UVOT	1687	$U$	> 21.8	< 3.4
7780	FTS	120	$R$	$18.06 \pm 0.05$	$207.7 \pm 9.3$	256985	UVOT	1687	$U$	> 21.8	< 3.4
8717	FTS	30	$R$	$18.24 \pm 0.07$	$176.0 \pm 11.0$						

Table 6 (cont'd)

Time <sup>a</sup> (s)	Telescope	Exp. (s)	Filter	Magnitude <sup>b</sup>	Flux <sup>c</sup> ( $\mu$ Jy)	Time <sup>a</sup> (s)	Telescope	Exp. (s)	Filter	Magnitude <sup>b</sup>	Flux <sup>c</sup> ( $\mu$ Jy)
--------------------------	-----------	-------------	--------	------------------------	----------------------------------	--------------------------	-----------	-------------	--------	------------------------	----------------------------------

Note. — Uncertainties are  $1\sigma$ .

<sup>a</sup>Midpoint time from the GRB onset time.

<sup>b</sup>Corrected for airmass.

<sup>c</sup>Corrected for Galactic extinction.

<sup>d</sup> $AB$  magnitudes.

Table 7. Radio data.

Frequency <sup>a</sup> (GHz)	Start time <sup>b</sup> (days)	Int src <sup>c</sup> (min)	RMS <sup>d</sup> ( $\mu$ Jy/bm)	Integrated flux <sup>e</sup> ( $\mu$ Jy)	Beam size <sup>f</sup> ( $''$ )	Observatory
21.8*	0.75	17.5	25.3	$87.6 \pm 24.0$	$1.1 \times 0.85$	VLA
19.1	-	-	31.8	$70.6 \pm 30.2$	$1.2 \times 0.94$	-
24.4	-	-	39.0	$112.7 \pm 37.0$	$0.97 \times 0.77$	-
6.0*	0.77	23.3	11.2	$< 33.6$	$3.1 \times 2.7$	VLA
4.9	-	-	17.2	$< 51.6$	$3.8 \times 3.5$	-
7.0	-	-	14.0	$< 42.0$	$2.7 \times 2.5$	-
230.5	0.77	302.5	$\sim 10^3$	$\lesssim 3 \times 10^3$	$0.5 \times 0.4$	SMA

<sup>a</sup>Mean frequency of observations. The asterisk indicates redundancy, as it is the mean of two sidebands listed below.

<sup>b</sup>Since the GRB.

<sup>c</sup>Integration time on source.

<sup>d</sup>Measured with IMSTAT in AIPS.

<sup>e</sup>Integrated flux using AIPS task JMFIT to fit a Gaussian, fixing size to clean beam.

<sup>f</sup>Synthesized clean beam size. The source for the K band detection is not resolved, so this is just the beam size.