



LJMU Research Online

Collins, RA, Trauzzi, G, Maltby, KM, Gibson, TI, Ratcliffe, FC, Hallam, J, Rainbird, S, Maclaine, J, Henderson, PA, Sims, DW, Mariani, S and Genner, MJ

Meta-Fish-Lib: A generalised, dynamic DNA reference library pipeline for metabarcoding of fishes.

<http://researchonline.ljmu.ac.uk/id/eprint/15711/>

Article

Citation (please note it is advisable to refer to the publisher's version if you intend to cite from this work)

Collins, RA, Trauzzi, G, Maltby, KM, Gibson, TI, Ratcliffe, FC, Hallam, J, Rainbird, S, Maclaine, J, Henderson, PA, Sims, DW, Mariani, S and Genner, MJ (2021) Meta-Fish-Lib: A generalised, dynamic DNA reference library pipeline for metabarcoding of fishes. *Journal of Fish Biology*. 99 (4). pp.

LJMU has developed [LJMU Research Online](http://researchonline.ljmu.ac.uk/) for users to access the research output of the University more effectively. Copyright © and Moral Rights for the papers on this site are retained by the individual authors and/or other copyright owners. Users may download and/or print one copy of any article(s) in LJMU Research Online to facilitate their private study or for non-commercial research. You may not engage in further distribution of the material or use it for any profit-making activities or any commercial gain.

The version presented here may differ from the published version or from the version of the record. Please see the repository URL above for details on accessing the published version and note that access may require a subscription.

For more information please contact researchonline@ljmu.ac.uk

<http://researchonline.ljmu.ac.uk/>

Meta-Fish-Lib: A generalised, dynamic DNA reference library pipeline for metabarcoding of fishes

Rupert A. Collins¹, Giulia Trauzzi^{1,2}, Katherine M. Maltby³, Thomas I. Gibson⁴, Frances C. Ratcliffe⁵, Jane Hallam⁶, Sophie Rainbird⁷, James Maclaine⁸, Peter A. Henderson⁹, David W. Sims^{7,10}, Stefano Mariani^{11,12}, and Martin J. Genner¹

¹**School of Biological Sciences, University of Bristol, Life Sciences Building, Tyndall Avenue, Bristol BS8 1TQ, UK**

²**School of Biological Sciences, Victoria University of Wellington, Wellington, NZ**

³**Centre for Environment, Fisheries and Aquaculture Science (Cefas), Pakefield Road, Lowestoft, NR33 0HT, UK**

⁴**Molecular Ecology and Fisheries Genetics Laboratory, Bangor University School of Natural Sciences, Environment Centre Wales, Deiniol Road, Bangor, Gwynedd, LL57 2UW, UK**

⁵**Centre for Sustainable Aquatic Research (CSAR), Swansea University, Swansea, UK**

⁶**School of Biological and Chemical Sciences, Queen Mary University of London, London, E1 4NS, UK**

⁷**Marine Biological Association of the United Kingdom, The Laboratory, Citadel Hill, Plymouth PL1 2PB, UK**

⁸**Department of Life Sciences, The Natural History Museum, Cromwell Road, South Kensington, London, SW7 5BD, UK**

⁹**Pisces Conservation Ltd, IRC House, The Square, Pennington, Lymington, Hampshire, SO41 8GN, UK**

¹⁰**Ocean and Earth Science, University of Southampton, National Oceanography Centre Southampton, European Way, Southampton SO14 3ZH, UK**

¹¹**Ecosystems & Environment Research Centre, School of Environment & Life Sciences, University of Salford, Salford M5 4WT, UK**

¹²**School of Biological & Environmental Sciences, Liverpool John Moores University, Liverpool, L3 3AF, UK**

Corresponding author:

Rupert A. Collins

Email address: rupertcollins@gmail.com

32 ABSTRACT

33 The accuracy and reliability of DNA metabarcoding analyses depend on the breadth and quality of the
34 reference libraries that underpin them. However, there are limited options available to obtain and curate the
35 huge volumes of sequence data that are available on public repositories such as NCBI and BOLD. Here, we
36 provide a pipeline to download, clean, and annotate mitochondrial DNA sequence data for a given list of fish
37 species. Features of this pipeline includes: (i) support for multiple metabarcode markers; (ii) searches on
38 species synonyms and taxonomic name validation; (iii) phylogeny assisted quality control for identification
39 and removal of misannotated sequences; (iv) automatically generated coverage reports for each new
40 GenBank release update; and (v) citable, versioned DOIs. As an example we provide a ready-to-use
41 curated reference library for the marine and freshwater fishes of the United Kingdom. To augment this
42 reference library for environmental DNA metabarcoding specifically, we generated 241 new MiFish-12S
43 sequences for 88 UK marine species, and make available new primer sets useful for sequencing these. This
44 brings the coverage of common UK species for the MiFish-12S fragment to 93%, opening new avenues
45 for scaling up fish metabarcoding across wide spatial gradients. The Meta-Fish-Lib reference library and
46 pipeline is hosted at github.com/genner-lab/meta-fish-lib.

47

48 [Keywords: 12S, COI, eDNA, Environmental DNA, metabarcoding, reference library.]

49 INTRODUCTION

50 DNA barcoding and DNA metabarcoding are increasingly important genetic techniques now employed widely
51 in ecological, biomonitoring, biosecurity, and fisheries research (Gilbey et al., 2021). Both methods allow
52 unique insights into species compositions of a wide range of biological material from aquatic environments.
53 For example, DNA barcoding can confirm the identity of monospecies samples such as seafoods (Wong and
54 Hanner, 2008) or exotic pets (Collins et al., 2012), while DNA metabarcoding can elucidate the composition
55 of complex multispecies substrates such as gut contents or environmental water samples (Taberlet et al., 2012).
56 As techniques are refined and working protocols standardised, environmental DNA (eDNA) analyses are
57 increasingly considered as biomonitoring methodologies appropriate under legal frameworks such as the EU
58 Water Framework Directive and Marine Strategy Framework Directive (Gilbey et al., 2021; Hering et al.,
59 2018). A critically important but neglected aspect of protocol standardisation, however, is that of the sequence
60 reference library (Arranz et al., 2020; Cristescu and Hebert, 2018; Weigand et al., 2019).

61 Ascertaining the species or higher taxonomic identity of unknown DNA sequences requires a training or
62 reference set of sequences that have a known *a priori* taxonomic structure; these are the “reference sequences”
63 or the “reference library” (Collins and Cruickshank, 2014). This dataset can be generated directly from tissue
64 samples, but most studies reuse sequence data obtained from public nucleotide sequence databases (Leray
65 et al., 2019). The most commonly used repositories are NCBI GenBank (ncbi.nlm.nih.gov/genbank) and
66 Barcode of Life Data System (BOLD; boldsystems.org). Taxonomic assignments can be made by querying
67 these databases directly using online tools such as *Blast* (blast.ncbi.nlm.nih.gov/Blast.cgi). Here, the user can
68 search the most up-to-date database version, but there are implications for repeatability because the set of
69 reference sequences used to generate matches are not known, and change with each update (Federhen, 2011).
70 There is also no quality control of reference sequences, and unexpected results must be rationalised *post hoc*

71 (Axtner et al., 2019). A more defensible approach is to generate a bespoke reference library for each study,
72 from sequences downloaded from the public databases (Valentini et al., 2016). These studies are repeatable
73 because a copy of the resulting reference library can be deposited as supporting information unique to that
74 publication, and sequences can also be evaluated by the user to ensure quality. However, the methods used to
75 obtain, filter and archive sequences obtained from the public databases are often poorly documented, while
76 the scope for updating and reusing these data are limited. Improvement in these aspects will increase the
77 reliability, flexibility, and transparency of metabarcoding protocols.

78 To address some of the problems associated with reference library repeatability, a number of excellent tools
79 have been developed in order to create a set of sequences from version-controlled code bases. These include:
80 *Midori* (Machida et al., 2017), *CRUX* (Curd et al., 2019), *BAGS* (Fontes et al., 2021), *CO-ARBitrator* (Heller
81 et al., 2018), *MetaCurator* (Richardson et al., 2020), *Metaxa2* (Bengtsson-Palme et al., 2018), *MARES*
82 (Arranz et al., 2020), and *MitoFish* (Sato et al., 2018). Of these, some solutions are restricted to particular
83 markers such as the standard COI barcode (*BAGS*, *CO-ARBitrator*, *MARES*). Others, such as *Midori* and
84 *MitoFish* contain all mitochondrial loci, but as such it can then be challenging to subsequently subset the
85 sequences that are representative of the metabarcode region of interest. *MetaCurator* and *CRUX* provide
86 targeted reference libraries for user-specified markers, but without an *a priori* set of sequence data, users must
87 download entire copies of NCBI databases locally and run *in silico* PCR, which may become computationally
88 prohibitive to store and process on some machines.

89 In contrast, obtaining and curating sequence data directly from a restricted list of regional study species
90 is desirable because: (i) taxonomic misassignment increases with geographic scale (Bergsten et al., 2012);
91 (ii) accounting for the species not present in the reference library can increase the reliability of taxonomic
92 assignments (Collins and Cruickshank, 2014; Somervuo et al., 2017); and (iii) searching for species and then
93 subsequently extracting metabarcodes should be computationally tractable. Additionally, many of the current
94 reference library pipelines produce outputs in formats specific to particular taxonomic assignment software,
95 and also provide no sample metadata together with the sequences, thus limiting options for the further quality
96 control of reference data.

97 Gap analyses of DNA reference libraries have shown that fishes are among the best represented taxonomic
98 groups for the COI barcode marker, at 82-88% coverage across Europe (Weigand et al., 2019), and 91%
99 in the United Kingdom (Collins et al., 2019). Unfortunately, however, while COI is an excellent marker
100 for many applications, for eDNA metabarcoding of water where target DNA is in low abundance and off-
101 target DNA is high relative abundance, current COI assays offer poor specificity and substantial off-target
102 amplification (Collins et al., 2019). Ribosomal 12S markers—and particularly the MiFish (Miya et al.,
103 2015) and Tele02 (Taberlet et al., 2018) primer sets—perform better, with less off-target amplification and a
104 desirable combination of amplification universality, amplification specificity, and taxonomic discrimination
105 (Collins et al., 2019; Miya et al., 2020). Although unlike COI, reference library coverage is poor for MiFish-
106 12S (Collins et al., 2019), with 62% of common UK species represented (versus 97% for COI), and fewer
107 individuals per species available (median of three versus 38). Across Europe only around a third of freshwater
108 fish species have 12S reference sequences (Weigand et al., 2019). In the UK there is a demand for high
109 quality public reference databases for all taxonomic groups, but only around 4% of sequences come from
110 UK specimens held in UK repositories, meaning “the UK lags behind several countries in Europe and North

111 America in that we lack trusted, reliable and openly accessible reference sequences for key UK taxa” (Price
112 et al., 2020). Therefore, until broader initiatives are put in place, there is a need to increase the species
113 coverage of the MiFish-12S marker and facilitate wide-scale eDNA metabarcoding of aquatic environments.

114 Here, we help to address some of these issues by: (i) developing a reference library pipeline that is
115 generalised (i.e. not specific to any particular metabarcode marker or taxonomy assignment software),
116 dynamic (i.e. easy to update, archive, and cite), annotated, and quality controlled; (ii) providing a curated
117 reference library for the fishes of the United Kingdom as a demonstration of the software; (iii) developing new
118 primer sets to amplify MiFish-12S reference sequences of fishes; and (iv) filling gaps in the UK’s MiFish-12S
119 reference library with new sequence data.

120 METHODS

121 Data availability

122 All data, scripts, and instructions to reproduce this work are available from a public repository hosted
123 at github.com/genner-lab/meta-fish-lib. The generic DOI [10.5281/zenodo.4443447](https://doi.org/10.5281/zenodo.4443447) resolves to the most
124 recent version of the repository, while version specific DOIs are found at [github.com/genner-lab/meta-fish-](https://github.com/genner-lab/meta-fish-lib/releases)
125 [lib/releases](https://github.com/genner-lab/meta-fish-lib/releases). Sequence data generated as part of this study are available on the NCBI nucleotide database at
126 ncbi.nlm.nih.gov/nucleotide (accessions MW818192:MW818432).

127 Reference library pipeline

128 System requirements

129 Accessing the ready-to-use UK fish reference library in FASTA and CSV format requires only a working R
130 installation (R Core Team, 2020) on any operating system, two loaded packages, and just ten lines of code.
131 The pipeline to assemble a new reference library from scratch runs on Mac and Linux as five executable R
132 scripts in the bash terminal, and is supplied with a tutorial and FAQ. An overview of the pipeline is provided
133 in Figure 1. Scripts are multithreaded and the user is given the option of the number of parallel processing
134 cores to run. In addition to R, the following software is required to be available on the system: *HMMER*
135 (Eddy, 1998), *RAxML* (Stamatakis et al., 2008), and *MAFFT* (Katoh and Standley, 2013). The R package
136 requirements are managed by *renv* (Ushey, 2021), meaning that it is possible to recreate an exact replica of
137 the pipeline independently of any other R package versions installed on the system. An API key from NCBI
138 is also required in order to access their database at a faster rate than a regular user.

139 Reference library assembly

140 Assembly of a reference library from scratch broadly follows Collins et al. (2019). First, a species list is
141 required to search against. This list can be provided manually by the user, or via a provided tutorial that
142 automatically creates and formats a species list from FishBase (fishbase.de/home.htm) for a given country
143 using *rfishbase* (Boettiger et al., 2012), and including all species synonyms. The NCBI GenBank and BOLD
144 databases are then searched using *rentrez* (Winter, 2017) and *bold* (Chamberlain, 2020). The NCBI search
145 uses liberal terms to target mitochondrial loci of interest, e.g. “COI, CO1, cox1,12S, 16S, rRNA, ribosomal,
146 cytochrome, subunit, cytb, COB, CYB, mitochondrial, mitochondrion”. The fragments of DNA homologous
147 to the metabarcode primer sets are then extracted from the dump of sequence data using hidden Markov
148 models in *HMMER* (Eddy, 1998). The marker fragments are then compiled into a single table and annotated



Figure 1. Simplified overview of bioinformatic workflow for the Meta-Fish-Lib pipeline. The pipeline runs as a series of executable R scripts for Mac and Linux. All logos and images are public domain and were obtained from wikipedia.org, phylopic.org, and onlinewebfonts.com.

149 with NCBI metadata using *traits* (Chamberlain et al., 2020). Next, the sequences are collapsed to haplotypes
150 by species (taxonomically aware dereplication) and phylogenetic trees are generated for each marker fragment
151 using *RAxML* (Figure 2). The branch tips are then annotated with the number of haplotypes and coloured
152 according to species monophyly and haplotype sharing, and the trees exported as PDF. These trees must be
153 reviewed manually by the user in order to identify misannotated sequences, i.e. those with incorrect species
154 names. Accessions that are deemed dubious can then be added to a “blacklist” file. This blacklist is then
155 called each time the reference library is loaded, and the misannotated accessions are automatically removed
156 along with those that contain terms in the GenBank description such as “unverified”, “similar to”, and “-like”.

157 **UK fish reference library**

158 ***Species list***

159 We compiled a list of marine and freshwater species from the United Kingdom from three sources: (i) the
160 Global Biodiversity Information Facility (gbif.org); (ii) FishBase; and (iii) the European Water Framework Di-
161 rective United Kingdom Technical Advisory Group list of transitional fish species ([wfd.uk.org/resources/transitional-](http://wfd.uk.org/resources/transitional-waters-fish)
162 [waters-fish](http://wfd.uk.org/resources/transitional-waters-fish); Annex 1). This list was then validated in the pipeline following FishBase taxonomy and synonyms,
163 and searched and quality controlled as outlined above. To provide a digestible summary, species were arbitrar-
164 ily labelled as “common” if they are frequently encountered inshore marine species or widespread freshwater
165 species, and otherwise as “rare” (generally deep sea, oceanic or range restricted species).

166 ***Tissue sampling, PCR and sequencing***

167 Fin and muscle tissue samples of UK marine fishes were obtained from: (i) Marine Biological Association
168 standard trawl surveys (for methodology see [Genner et al., 2010](https://doi.org/10.1016/j.fishres.2010.05.001)); (ii) fish impingement surveys of power
169 stations by Pisces Conservation Ltd. (for methodology see [Collins et al., 2019](https://doi.org/10.1016/j.fishres.2019.05.001)); and (iii) CEFAS (Centre for
170 Environment, Fisheries, and Aquaculture Science) 2017 Eastern English Channel Beam Trawl Survey ([ICES,](https://doi.org/10.1016/j.fishres.2019.05.001)
171 [2019](https://doi.org/10.1016/j.fishres.2019.05.001)). Tissues were either preserved in absolute ethanol, or frozen directly at -20°C . Voucher material for
172 these tissues was fixed in either absolute ethanol or 5% formalin solution, and subsequently stored in 70%
173 ethanol. Taxonomic identification of the voucher material followed [Henderson \(2014\)](https://doi.org/10.1016/j.fishres.2014.05.001).

174 Isolation of genomic DNA followed a simple lysis-precipitation protocol ([github.com/genner-lab/Molecular-](https://github.com/genner-lab/Molecular-Lab-Protocols)
175 [Lab-Protocols](https://github.com/genner-lab/Molecular-Lab-Protocols)). PCR reactions were then conducted in 20 μL reactions using 10 μL GoTaq G2 Green Master
176 Mix (Promega M7822), 2 μL forward and reserve primer (2 μM), and 50 ng template DNA. Primer pairs to
177 amplify a partial 12S fragment containing the MiFish-12S fragment are presented in [Table 1](#). We first used
178 the Aa22-PheF/Aa633-12sR primer pair, followed by the MiFish-U primer pair if those amplifications failed.
179 Thermocycling parameters followed polymerase manufacturer’s instructions with annealing temperatures
180 from [Table 1](#), and were carried out on an Eppendorf Nexus machine. Amplicons were then purified using spin
181 columns (Zymo C1004-250), and Sanger sequenced using the Aa633-12sR primer and the Eurofins Genomics
182 PlateSeq service, according to manufacturer’s instructions. Amplicons sequenced with the MiFish-U primer
183 pair were sequenced in both directions. Chromatograms were assembled into contigs with *Geneious* v8.8.1
184 ([Kearse et al., 2012](https://doi.org/10.1016/j.fishres.2012.05.001)), and checked for contamination or mislabelling using phylogenetic trees and NCBI *Blast*.

185 ***Ethical statement***

186 The collection of animals for study was part of standard fish surveying procedures and complied with the
187 guidelines and policies as approved by the Marine Biological Association, Pisces Conservation Ltd., and the

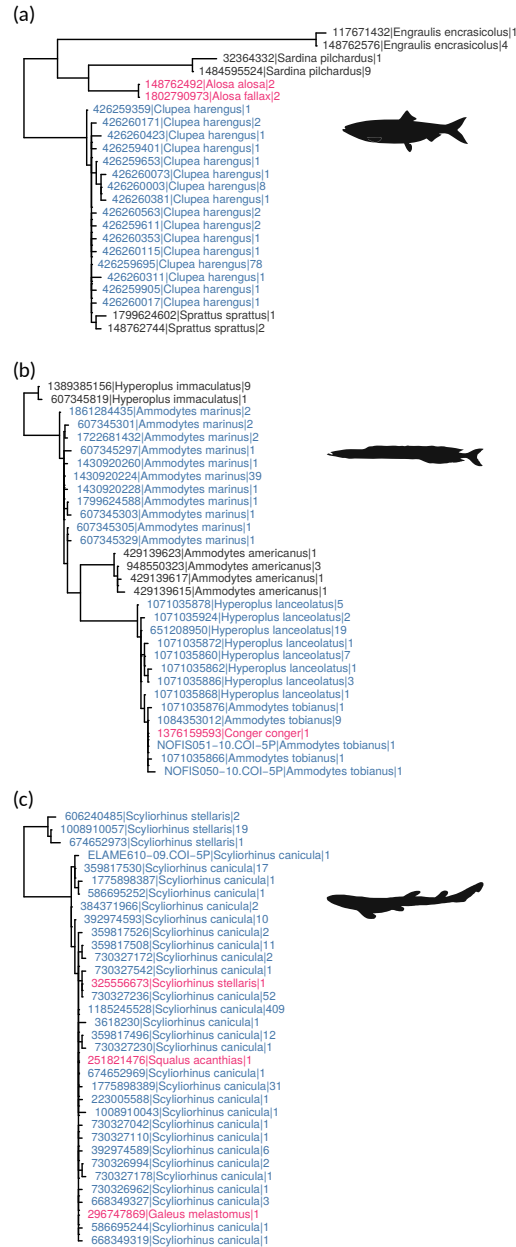


Figure 2. Examples of phylogenetic quality control output with taxonomically aware dereplication of sequences. Monophyletic species are coloured dark grey, non-monophyletic species blue, and interspecific shared haplotypes red. The first part of the branch tip label is the NCBI/BOLD database identifier for the representative sequence (mother); second part is species name; and third part is number of collapsed haplotypes, i.e. n dereplicated daughters belonging to that mother sequence. Panel (a) shows Clupeiformes sequences for the 12S-MiFish metabarcode (Miya et al., 2015), with two *Alosa* species sharing haplotypes, and *Sprattus sprattus* nested within *Clupea harengus*; (b) shows Ammodytidae sequences for the Leray et al. (2013) COI metabarcode, with monophyletic *Hyperoplus immaculatus* and *Ammodytes americanus*, non-monophyletic *A. marinus* and *H. lanceolatus*, and a *Conger conger* (Anguilliformes) sequence nested in *A. tobianus*; and (c) shows *Scyliorhinus* sequences for the Leray et al. (2013) COI metabarcode, with sequences of *Scyliorhinus stellaris*, *Squalus acanthias* and *Galeus melastomus* nested in *Scyliorhinus canicula*. Images are public domain and were obtained from phylopic.org.

Table 1. Primers for amplifying the MiFish-12S metabarcoding marker reference library. Positions and sizes are relative to the mitogenome of *Anguilla anguilla* (AP007233.1). Amplicon size includes primers.

Primer	Direction	Amplicon size (bp)	Position	Oligonucleotide 5'-3'	Annealing temp. (°C)	Reference
Aa22-PheF	Forward	612	22	AGCATAACACTGAAGATRYTARGA	53	This study
Aa633-12sR	Reverse	612	633	TTCTAGAACAGGCTCCTCTAG	53	This study
12S_30F	Forward	1,296	29	CACTGAAGMTGYTAAGAYG	50	Hänfling et al. (2016)
12S_1380R	Reverse	1,296	1,324	CTKGCTAAATCATGATGC	50	Hänfling et al. (2016)
MiFish-U-F	Forward	219	294	GTCGGTAAAACTCGTGCCAGC	60	Miya et al. (2015)
MiFish-U-R	Reverse	219	512	CATAGTGGGGTATCTAATCCCAGTTTG	60	Miya et al. (2015)
Li-F	Forward	721	294	GTCGGTAAAACTCGTGCCAG	57	Stoeckle et al. (2018)
Li-R	Reverse	721	1,014	YCCAAGYGCACCTCCGGTA	57	Stoeckle et al. (2018)

189 RESULTS

190 UK fish reference library

191 Database search and library coverage

192 Our compilation of UK marine and freshwater species identified a total of 530 accepted scientific names,
 193 and a further 3,733 synonyms. The NCBI GenBank and BOLD databases were searched on 13 January 2021
 194 (GenBank release 241), and retrieved 51,748 accessions. After quality control 49,233 accessions from 492
 195 unique species corresponding to the eight primer sets listed in Table 2 remained (2,515 removed). Search,
 196 assembly and annotation of the reference library took around two hours on an average specification Ubuntu
 197 Linux desktop machine (i7-3820; 8 × 3.60 GHz; 16 GB RAM). The phylogenetic quality control step took
 198 around eight hours to complete on the same machine using eight processing cores, with the COI datasets
 199 taking the longest amount of time.

200 The Ward et al. (2005) fish barcoding primers for COI yielded the greatest number of sequences at 28,297,
 201 resulting in 98% of common species and 92% of all species covered, with a median of 10 haplotypes per
 202 species and 4% represented by one sequence (Table 2). The MiFish-12S primer set covered 76% of common
 203 species, 70% of all species, median of one haplotype per species, and 25% of species represented by one
 204 sequence.

Table 2. Reference library coverage for eight commonly used metabarcoding primer sets from 530 UK fish species accessed from GenBank (release 241) using the Meta-Fish-Lib pipeline. Cov. = coverage proportion of all, common (com.), and rare species; $n = 1$ represents singleton species, i.e. proportion of species ($n > 0$) represented with one sequence; Haps. = haplotypes per species (mean and median).

Locus	Primers	Reference	Total	Cov. (all)	Cov. (com.)	Cov. (rare)	$n = 1$	Haps (mean)	Haps (med.)
12S	MiFish-U-F / MiFish-U-R	Miya et al. (2015)	2,171	0.70	0.76	0.67	0.25	1.7	1
12S	Tele02-f / Tele02-r	Taberlet et al. (2018)	2,171	0.70	0.76	0.67	0.25	1.7	1
12S	12S-V5f / 12S-V5r	Riaz et al. (2011)	2,712	0.73	0.90	0.64	0.25	1.8	1
12S	L1848 / H1913	Valentini et al. (2016)	1,859	0.58	0.68	0.53	0.34	1.3	1
16S	Fish16sFD / 16s2R	Berry et al. (2017)	4,462	0.79	0.97	0.70	0.16	3.2	2
COI	mlCOIintF / jgHCO2198	Leray et al. (2013)	28,114	0.92	0.98	0.89	0.04	10.6	7
COI	FishF1 / FishR1	Ward et al. (2005)	28,297	0.92	0.98	0.89	0.04	18.1	10
CYTb	L14912-CYB / H15149-CYB	Minamoto et al. (2012)	17,194	0.68	0.86	0.58	0.16	8.6	2

205 **MiFish-12S sequencing**

206 A total of 241 MiFish-12S sequences were obtained from the identified voucher specimens collected. These
207 sequences represent 88 species, 30 of which were not available on GenBank. This raises the coverage of
208 MiFish-12S references for UK species from 370 to 400, and represents an increase from 70% to 75% of the
209 530 total species. Common species increased from 134 to 164 (76% to 93% of the 176 common species). The
210 sequences were uploaded to GenBank under the accession numbers MW818192:MW818432 (Table S1).

211 The Aa22-PheF/Aa633-12sR primer set developed here (Table 1) amplifies the MiFish-12S region and
212 its priming sites in one sequencing reaction. This set successfully amplified all marine species sampled
213 here, with the exception of callionymids and syngnathids, which needed to be amplified with the MiFish-U
214 primers in two sequencing reactions in order to capture the full metabarcode (minus the priming sites).
215 The Aa22-PheF/Aa633-12sR primer set can amplify the 12S-V5 region (Riaz et al., 2011) if additionally
216 sequenced in the forward direction. The 12S primer sets of Hänfling et al. (2016) and Stoeckle et al. (2018)
217 amplify the MiFish-12S fragment, the 12S-V5 fragment, and the Valentini et al. (2016) L1848/H1913 teleo
218 region if sequenced in both directions. These primer sets allow several options for *de novo* generation of
219 reference sequence data from new and archived tissue collections.

220 **DISCUSSION**

221 Here, we provide the Meta-Fish-Lib pipeline to obtain, curate and archive reference sequence data from
222 GenBank and BOLD for a given list of fish species. A species-focused pipeline is most useful for situations
223 where a reasonably large proportion of the species expected in a study have data present on public repositories.
224 In situations where the target community is poorly represented or not known, such as in the case of some
225 hyperdiverse tropical systems, the user can search for genera rather than species in order to build a reference
226 library better suited to higher taxonomic assignment. When a species list is not available to the user, the
227 pipeline can use FishBase to generate taxonomically validated lists of species names for a given country.

228 While the NCBI taxonomy database can resolve synonyms, the step of including these in the search
229 stage and subsequently also validating names makes the pipeline robust to changes in taxonomy. The user is
230 informed where changes have taken place, and can also make their own custom changes. The pipeline uses
231 generous search terms to obtain mitochondrial sequence data, thereby making the search process additionally
232 robust to idiosyncrasies in sequence annotation, such as “COI” versus “CO1” or “COX1”. Since several
233 different primer sets can be used to amplify loci such as 12S (Table 1), and because there are several different
234 metabarcode regions within it (Table 2), it is difficult to know if a sequence annotated as “12S” contains
235 the marker fragment of interest. Here, hidden Markov models isolate specific metabarcode fragments from
236 the dump of sequence data, thus eliminating superfluous nucleotides that can increase classification errors
237 (Richardson et al., 2020). The pipeline is not limited to any particular DNA barcode or DNA metabarcode
238 primer set. Currently there are eight popular primer sets for fishes implemented (Table 2), but additional sets
239 can be added as necessary, or removed to reduce computational load.

240 A phylogenetic quality control step is also included, and while this is the most time consuming step
241 to perform, it is arguably one of the most important given the sensitivity of species level assignments to
242 misannotated reference data (Locatelli et al., 2020). Here, phylogenetic trees are generated for each primer set,
243 and the trees are annotated by interspecific haplotype sharing and non-monophyly (Figure 2). It is then the task

244 of the user to employ these resources to assist in identifying accessions that have potentially been misannotated.
245 In the examples illustrated in [Figure 2](#), the shared COI haplotypes of *Conger conger*, *Scyliorhinus stellaris*,
246 *Squalus acanthias* and *Galeus melastomus* are likely to have been misannotated based on the evidence that
247 their putative conspecifics are represented elsewhere in the tree by sequences from multiple studies; for the
248 shared 12S *Alosa* haplotypes, in the absence of information from other sequence data, these are most likely
249 explained by them being closely related congeneric species ([Bloom et al., 2018](#)). Advantages of this manual
250 approach are that the user visualises the data, can focus on the taxa that are of particular importance to them,
251 and can flexibly apply their own criteria to exclude sequences. However, as indicated in the examples in
252 [Figure 2](#), there are disadvantages: (i) determining misidentifications among closely related congeneric species
253 can be challenging because some may naturally share haplotypes—especially so for the rRNA loci that are
254 less variable than COI—and may require specialist taxonomic expertise to clarify ([Leray et al., 2020](#)); (ii)
255 there may be insufficient numbers of sequences available for some species to reach a reasonable conclusion;
256 (iii) while blacklisted sequences are stored and archived as part of the reference library, the determinations are
257 subjective according to the user’s criteria; and (iv) generating phylogenetic trees is not scalable for very large
258 numbers of sequences. Regarding this final point, for datasets with hundreds of thousands of sequences, users
259 are recommended to remove metabarcodes that they are not interested in, and to split their input list of species
260 into more manageable partitions and merge the tables once completed. In terms of automating quality control
261 to improve repeatability, a barcode audit and grading system ([Fontes et al., 2021](#); [Oliveira et al., 2016](#)) or
262 software to detect misannotations ([Kozlov et al., 2016](#)) would be possible to implement in future versions.

263 Unlike other software, reference libraries produced by this pipeline are additionally annotated with meta-
264 data from NCBI, BOLD, and FishBase, including higher taxonomic ranks, voucher information (institution,
265 catalogue number), collection information (country, longitude, latitude), publication information (journal,
266 title, lead author), and accession information (date uploaded, GenBank release version). As the dataset grows,
267 users can be increasingly selective over which accessions are used as references, preferring those for example
268 that have voucher material, are published, or were collected in the study region ([Price et al., 2020](#)). Once the
269 reference library is assessed and quality controlled, a summary document is compiled containing important
270 statistics. This includes a primer set coverage table, a table of species and the number of sequences for each
271 primer set, and a table of new sequences that were not present in the previous version of the library. At this
272 point, the library can be archived to a GitHub repository and a DOI obtained to enable that exact version of
273 the library to be cited in a publication or report.

274 For the fishes of the United Kingdom we assembled an extensive reference library for eight metabarcode
275 markers from COI, 12S, 16S and cytochrome *b*, with a total of 49,233 accessions and 492 species after quality
276 control. This UK fish reference library is quality controlled and ready-to-use, and is archived with DOIs for
277 recent and previous GenBank releases. With 98% of common species covered and a median of 10 haplotypes
278 per species, the COI references represent an unmatched resource for DNA barcoding and metabarcoding of the
279 regional ichthyofauna. Coverage for the MiFish-12S primer set, however, which is more effective for eDNA
280 metabarcoding than COI ([Collins et al., 2019](#); [Miya et al., 2020](#)), was considerably lower, at 76% common
281 species coverage, with 25% of those species represented by only one sequence. In order to help address
282 this deficit we obtained 241 MiFish-12S sequences from 88 marine species, 30 of which were previously
283 unrepresented in the most recent GenBank release (241), and includes common species such as *Platichthys*

284 *flesus*, *Scophthalmus rhombus*, *Lipophrys pholis*, *Callionymus lyra* and *Scyliorhinus stellaris*. These new
285 sequences, plus the recent contributions to GenBank, translate to an increase in common species coverage
286 from 62% (Collins et al., 2019), to 93% here. We also present new and previously published primer sets to
287 facilitate amplification of both the MiFish-12S reference sequences and the priming sites which are useful for
288 quantifying primer bias (Collins et al., 2019).

289 Implementation of eDNA metabarcoding as a standardised aquatic survey tool is impeded by the availabil-
290 ity of suitable sequence reference libraries, and particularly so for its deployment as part of a legal monitoring
291 framework (Weigand et al., 2019). Quality controlled and densely sampled region-specific reference libraries
292 detect more taxa, more reliably (Stoeckle et al., 2020), and large scale metabarcoding projects across temporal
293 or spatial gradients require complete species coverage to allow for the reliable detection of taxa characteristic
294 of different environments. As well as providing a general solution for assembling and curating reference
295 libraries for fishes, this study builds on previous reference libraries for UK and European fishes (Knebel-
296 berger et al., 2014; Oliveira et al., 2016) by both expanding the choice of metabarcode marker beyond the
297 standard COI barcode, and by additionally providing new MiFish-12S reference sequences for 88 European
298 marine species. We therefore expect this resource to significantly expand the reach and accuracy of DNA
299 metabarcoding studies in the North-East Atlantic, and pave the way for a more robust approach to DNA-based
300 biomonitoring across the globe.

301 ACKNOWLEDGEMENTS

302 This work was funded by the Natural Environment Research Council grant NE/N005937/1 (project SeaDNA).
303 Thomas Gibson would like to acknowledge the work of Jim Drewery and the other scientists and crew of the
304 *MRV Scotia* (Marine Scotland Science) in collecting his tissue samples, although they were not sequenced in
305 time to be included in this publication.

306 AUTHOR CONTRIBUTIONS

307 M.J.G., S.M., D.W.S., and P.A.H. conceived the study and obtained funding; R.A.C., S.R., and K.M.M.
308 conducted fieldwork. R.A.C., G.T., F.C.R., T.I.G., and J.H. conducted laboratory work. R.A.C. conducted the
309 analyses and wrote the software. R.A.C. wrote the manuscript. All authors contributed critically to the drafts
310 and gave final approval for publication.

311 SUPPORTING INFORMATION

312 Table S1. Darwin Core formatted CSV table of fish specimens sequenced as part of this work, including
313 NCBI GenBank accessions and metadata.

314 REFERENCES

- 315 Arranz, V., Pearman, W. S., Aguirre, J. D., & Liggins, L. (2020). MARES, a replicable pipeline and curated reference
316 database for marine eukaryote metabarcoding. *Scientific Data*, 7, 1–8, DOI: [10.1038/s41597-020-0549-9](https://doi.org/10.1038/s41597-020-0549-9).
317 Axtner, J., Crampton-Platt, A., Hörig, L. A., Mohamed, A., Xu, C. C. Y., Yu, D. W., & Wilting, A. (2019). An efficient
318 and robust laboratory workflow and tetrapod database for larger scale environmental DNA studies. *GigaScience*, 8,
319 1–17, DOI: [10.1093/gigascience/giz029](https://doi.org/10.1093/gigascience/giz029).

320 Bengtsson-Palme, J., Richardson, R. T., Meola, M., Wurzbacher, C., Tremblay, É. D., Thorell, K., Kanger, K., Eriksson,
321 K. M., Bilodeau, G. J., Johnson, R. M., Hartmann, M., & Nilsson, R. H. (2018). Metaxa2 database builder: enabling
322 taxonomic identification from metagenomic or metabarcoding data using any genetic marker. *Bioinformatics*, 34(23),
323 4027–4033, DOI: [10.1093/bioinformatics/bty482](https://doi.org/10.1093/bioinformatics/bty482).

324 Bergsten, J., Bilton, D. T., Fujisawa, T., Elliott, M., Monaghan, M. T., Balke, M., Hendrich, L., Geijer, J., Herrmann, J.,
325 Foster, G. N., Ribera, I., Nilsson, A. N., Barraclough, T. G., & Vogler, A. P. (2012). The effect of geographical scale
326 of sampling on DNA barcoding. *Systematic Biology*, 61, 851–869, DOI: [10.1093/sysbio/sys037](https://doi.org/10.1093/sysbio/sys037).

327 Berry, T. E., Osterrieder, S. K., Murray, D. C., Coghlan, M. L., Richardson, A. J., Grealy, A. K., Stat, M., Bejder, L., &
328 Bunce, M. (2017). Metabarcoding for diet analysis and biodiversity: A case study using the endangered Australian
329 sea lion (*Neophoca cinerea*). *Ecology and Evolution*, 7, 5435–5453, DOI: [10.1002/ece3.3123](https://doi.org/10.1002/ece3.3123).

330 Bloom, D. D., Burns, M. D., & Schriever, T. A. (2018). Evolution of body size and trophic position in migratory fishes:
331 a phylogenetic comparative analysis of Clupeiformes (anchovies, herring, shad and allies). *Biological Journal of the*
332 *Linnean Society*, 125, 302–314, DOI: [10.1093/biolinnean/bly106](https://doi.org/10.1093/biolinnean/bly106).

333 Boettiger, C., Lang, D. T., & Wainwright, P. C. (2012). rfishbase: exploring , manipulating and visualizing FishBase
334 data from R. *Journal of Fish Biology*, 81, 2030–2039, DOI: [10.1111/j.1095-8649.2012.03464.x](https://doi.org/10.1111/j.1095-8649.2012.03464.x).

335 Chamberlain, S. (2020). bold: Interface to Bold Systems API. [https://cran.r-project.org/package=](https://cran.r-project.org/package=bold)
336 [bold](https://cran.r-project.org/package=bold). R package version 1.1.0.

337 Chamberlain, S., Foster, Z., Bartomeus, I., LeBauer, D., Black, C., & Harris, D. (2020). traits: species trait data from
338 around the web. <https://github.com/ropensci/traits>. R package version 0.5.0.

339 Collins, R. A., Armstrong, K. F., Meier, R., Yi, Y., Brown, S. D. J., Cruickshank, R. H., Keeling, S., & Johnston, C.
340 (2012). Barcoding and border biosecurity: identifying cyprinid fishes in the aquarium trade. *PLoS ONE*, 7, e28381,
341 DOI: [10.1371/journal.pone.0028381](https://doi.org/10.1371/journal.pone.0028381).

342 Collins, R. A., Bakker, J., Wangenstein, O. S., Soto, A. Z., Corrigan, L., Sims, D. W., Genner, M. J., & Mariani, S.
343 (2019). Non-specific amplification compromises environmental DNA metabarcoding with COI. *Methods in Ecology*
344 *and Evolution*, 10, 1985–2001, DOI: [10.1111/2041-210X.13276](https://doi.org/10.1111/2041-210X.13276).

345 Collins, R. A. & Cruickshank, R. H. (2014). Known knowns, known unknowns, unknown unknowns and un-
346 known knowns in DNA barcoding: A comment on Dowton et al. *Systematic Biology*, 63, 1005–1009, DOI:
347 [10.1093/sysbio/syu060](https://doi.org/10.1093/sysbio/syu060).

348 Cristescu, M. E. & Hebert, P. D. N. (2018). Uses and misuses of environmental DNA in biodiversity science and
349 conservation. *Annual Review of Ecology, Evolution, and Systematics*, 49, 209–230.

350 Curd, E. E., Gold, Z., Kandlikar, G. S., Gomer, J., Ogden, M., O’Connell, T., Pipes, L., Schweizer, T. M., Rabichow, L.,
351 Lin, M., Shi, B., Barber, P. H., Kraft, N., Wayne, R., & Meyer, R. S. (2019). Anacapa Toolkit: An environmental
352 DNA toolkit for processing multilocus metabarcode datasets. *Methods in Ecology and Evolution*, 10, 1469–1475,
353 DOI: [10.1111/2041-210X.13214](https://doi.org/10.1111/2041-210X.13214).

354 Eddy, S. R. (1998). Profile hidden Markov models. *Bioinformatics*, 14, 755–763, DOI:
355 [10.1093/bioinformatics/14.9.755](https://doi.org/10.1093/bioinformatics/14.9.755).

356 Federhen, S. (2011). Comment on ‘Birdstrikes and barcoding: can DNA methods help make the airways safer?’.
357 *Molecular Ecology Resources*, 11, 937–938, DOI: [10.1111/j.1755-0998.2011.03054.x](https://doi.org/10.1111/j.1755-0998.2011.03054.x).

358 Fontes, J. T., Vieira, P. E., Ekrem, T., Soares, P., & Costa, F. O. (2021). BAGS: An automated Barcode, Au-
359 dit & Grade System for DNA barcode reference libraries. *Molecular Ecology Resources*, 21, 573–583, DOI:
360 [10.1111/1755-0998.13262](https://doi.org/10.1111/1755-0998.13262).

361 Genner, M. J., Sims, D. W., Southward, A. J., Budd, G. C., Masterson, P., McHugh, M., Rendle, P., Southall,
362 E. J., Wearmouth, V. J., & Hawkins, S. J. (2010). Body size-dependent responses of a marine fish assem-
363 blage to climate change and fishing over a century-long scale. *Global Change Biology*, 16, 517–527, DOI:
364 [10.1111/j.1365-2486.2009.02027.x](https://doi.org/10.1111/j.1365-2486.2009.02027.x).

365 Gilbey, J., Carvalho, G., Castilho, R., Coscia, I., Coulson, M. W., Dahle, G., Derycke, S., Francisco, S. M., Hel-

366 yar, S. J., Johansen, T., Junge, C., Layton, K. K. S., Martinsohn, J., Matejusova, I., Robalo, J. I., Rodríguez-
367 Ezpeleta, N., Silva, G., Strammer, I., Vasemägi, A., & Volckaert, F. A. M. (2021). Life in a drop: Sampling
368 environmental DNA for marine fishery management and ecosystem monitoring. *Marine Policy*, 124, 104331, DOI:
369 [10.1016/j.marpol.2020.104331](https://doi.org/10.1016/j.marpol.2020.104331).

370 Hänfling, B., Lawson Handley, L., Read, D. S., Hahn, C., Li, J., Nichols, P., Blackman, R. C., Oliver, A., & Winfield,
371 I. J. (2016). Environmental DNA metabarcoding of lake fish communities reflects long-term data from established
372 survey methods. *Molecular Ecology*, 25, 3101–3119, DOI: [10.1111/mec.13660](https://doi.org/10.1111/mec.13660).

373 Heller, P., Casaletto, J., Ruiz, G., & Geller, J. (2018). A database of metazoan cytochrome *c* oxidase subunit I gene se-
374 quences derived from GenBank with CO-ARBitrator. *Scientific Data*, 5, 1–7, DOI: [10.1038/sdata.2018.156](https://doi.org/10.1038/sdata.2018.156).

375 Henderson, P. A. (2014). *Identification Guide to the Inshore Fish of the British Isles*. Pisces Conservation Ltd.,
376 Pennington, UK.

377 Hering, D., Borja, A., Jones, J. I., Pont, D., Boets, P., Bouchez, A., Bruce, K., Drakare, S., Hänfling, B., Kahlert, M.,
378 Leese, F., Meissner, K., Mergen, P., Reyjol, Y., Segurado, P., Vogler, A., & Kelly, M. (2018). Implementation options
379 for DNA-based identification into ecological status assessment under the European Water Framework Directive.
380 *Water Research*, 138, 192–205, DOI: [10.1016/j.watres.2018.03.003](https://doi.org/10.1016/j.watres.2018.03.003).

381 ICES (2019). *Manual for the Offshore Beam Trawl Surveys, Version 3.4, April 2019, Working Group on Beam Trawl*
382 *Surveys*. DOI: <http://doi.org/10.17895/ices.pub.5353>.

383 Katoh, K. & Standley, D. M. (2013). MAFFT multiple sequence alignment software version 7: improvements in
384 performance and usability. *Molecular Biology and Evolution*, 30, 772–780, DOI: [10.1093/molbev/mst010](https://doi.org/10.1093/molbev/mst010).

385 Kearse, M., Moir, R., Wilson, A., Stones-Havas, S., Cheung, M., Sturrock, S., Buxton, S., Cooper, A., Markowitz,
386 S., Duran, C., Thierer, T., Ashton, B., Meintjes, P., & Drummond, A. (2012). Geneious Basic: an integrated
387 and extendable desktop software platform for the organization and analysis of sequence data. *Bioinformatics*, 28,
388 1647–1649, DOI: [10.1093/bioinformatics/bts199](https://doi.org/10.1093/bioinformatics/bts199).

389 Knebelsberger, T., Landi, M., Neumann, H., Kloppmann, M., Sell, A. F., Campbell, P. D., Laakmann, S., Raupach, M. J.,
390 Carvalho, G. R., & Costa, F. O. (2014). A reliable DNA barcode reference library for the identification of the North
391 European shelf fish fauna. *Molecular Ecology Resources*, 14, 1060–1071, DOI: [10.1111/1755-0998.12238](https://doi.org/10.1111/1755-0998.12238).

392 Kozlov, A., Zhang, J., Yilmaz, P., Glöckner, F. O., & Stamatakis, A. (2016). Phylogeny-aware identification and
393 correction of taxonomically mislabeled sequences. *Nucleic Acids Research*, 2, 5022–5033, DOI: [10.1101/042200](https://doi.org/10.1101/042200).

394 Leray, M., Knowlton, N., Ho, S. L., Nguyen, B. N., & Machida, R. J. (2019). GenBank is a reliable resource for 21st
395 century biodiversity research. *Proceedings of the National Academy of Sciences of the United States of America*, 116,
396 22651–22656, DOI: [10.1073/pnas.19111714116](https://doi.org/10.1073/pnas.19111714116).

397 Leray, M., Knowlton, N., Ho, S. L., Nguyen, B. N., & Machida, R. J. (2020). Evaluating species-level accuracy of
398 GenBank metazoan sequences will require experts' effort in each group. *Proceedings of the National Academy of*
399 *Sciences of the United States of America*, 117, 32213–32214, DOI: [10.1073/pnas.2019903117](https://doi.org/10.1073/pnas.2019903117).

400 Leray, M., Yang, J. Y., Meyer, C. P., Mills, S. C., Agudelo, N., Ranwez, V., Boehm, J. T., & Machida, R. J. (2013).
401 A new versatile primer set targeting a short fragment of the mitochondrial COI region for metabarcoding meta-
402 zoan diversity: application for characterizing coral reef fish gut contents. *Frontiers in Zoology*, 10, 34, DOI:
403 [10.1186/1742-9994-10-34](https://doi.org/10.1186/1742-9994-10-34).

404 Locatelli, N. S., McIntyre, P. B., Therkildsen, N. O., & Baetscher, D. S. (2020). GenBank's reliability is uncertain
405 for biodiversity researchers seeking species-level assignment for eDNA. *Proceedings of the National Academy of*
406 *Sciences of the United States of America*, 117, 32211–32212, DOI: [10.1073/pnas.2007421117](https://doi.org/10.1073/pnas.2007421117).

407 Machida, R. J., Leray, M., Ho, S. L., & Knowlton, N. (2017). Metazoan mitochondrial gene sequence reference datasets
408 for taxonomic assignment of environmental samples. *Scientific Data*, 4, 1–7, DOI: [10.1038/sdata.2017.27](https://doi.org/10.1038/sdata.2017.27).

409 Minamoto, T., Yamanaka, H., Takahara, T., Honjo, M. N., & Kawabata, Z. (2012). Surveillance of fish species
410 composition using environmental DNA. *Limnology*, 13, 193–197, DOI: [10.1007/s10201-011-0362-4](https://doi.org/10.1007/s10201-011-0362-4).

411 Miya, M., Gotoh, R. O., & Sado, T. (2020). MiFish metabarcoding: a high-throughput approach for simultaneous

412 detection of multiple fish species from environmental DNA and other samples. *Fisheries Science*, 86, 939–970, DOI:
413 [10.1007/s12562-020-01461-x](https://doi.org/10.1007/s12562-020-01461-x).

414 Miya, M., Sato, Y., Fukunaga, T., Sado, T., Poulsen, J. Y., Sato, K., Minamoto, T., Yamamoto, S., Yamanaka, H., Araki,
415 H., Kondoh, M., & Iwasaki, W. (2015). MiFish, a set of universal PCR primers for metabarcoding environmental
416 DNA from fishes: detection of more than 230 subtropical marine species. *Royal Society Open Science*, 2, 150088,
417 DOI: [10.1098/rsos.150088](https://doi.org/10.1098/rsos.150088).

418 Oliveira, L. M., Kneibelsberger, T., Landi, M., Soares, P., Raupach, M. J., & Costa, F. O. (2016). Assembling and
419 auditing a comprehensive DNA barcode reference library for European marine fishes. *Journal of Fish Biology*, 89,
420 2741–2754, DOI: [10.1111/jfb.13169](https://doi.org/10.1111/jfb.13169).

421 Price, B. W., Briscoe, A. G., Misra, R., & Broad, G. (2020). DEFRA Centre of Excellence for DNA Methods: Evaluation
422 of DNA barcode libraries used in the UK and developing an action plan to fill priority gaps. Technical report, ISBN:
423 [9781783546718](https://doi.org/9781783546718), <http://publications.naturalengland.org.uk/>.

424 R Core Team (2020). R: A Language and Environment for Statistical Computing. [https://www.r-project.](https://www.r-project.org/)
425 [org/](https://www.r-project.org/). R version 4.0.3.

426 Riaz, T., Shehzad, W., Viari, A., Pompanon, F., Taberlet, P., & Coissac, E. (2011). EcoPrimers: Inference of
427 new DNA barcode markers from whole genome sequence analysis. *Nucleic Acids Research*, 39, e145, DOI:
428 [10.1093/nar/gkr732](https://doi.org/10.1093/nar/gkr732).

429 Richardson, R. T., Sponsler, D. B., McMinn-Sauder, H., & Johnson, R. M. (2020). MetaCurator: A hidden Markov
430 model-based toolkit for extracting and curating sequences from taxonomically-informative genetic markers. *Methods*
431 *in Ecology and Evolution*, 11, 181–186, DOI: [10.1111/2041-210X.13314](https://doi.org/10.1111/2041-210X.13314).

432 Sato, Y., Miya, M., Fukunaga, T., Sado, T., & Iwasaki, W. (2018). MitoFish and mifish pipeline: A mitochondrial
433 genome database of fish with an analysis pipeline for environmental DNA metabarcoding. *Molecular Biology and*
434 *Evolution*, 35, 1553–1555, DOI: [10.1093/molbev/msy074](https://doi.org/10.1093/molbev/msy074).

435 Somervuo, P., Yu, D. W., Xu, C. C. Y., Ji, Y., Hultman, J., Wirta, H., & Ovaskainen, O. (2017). Quantifying uncertainty
436 of taxonomic placement in DNA barcoding and metabarcoding. *Methods in Ecology and Evolution*, 8, 398–407, DOI:
437 [10.1111/2041-210X.12721](https://doi.org/10.1111/2041-210X.12721).

438 Stamatakis, A., Hoover, P., & Rougemont, J. (2008). A rapid bootstrap algorithm for the RAxML Web servers.
439 *Systematic Biology*, 57, 758–771, DOI: [10.1080/10635150802429642](https://doi.org/10.1080/10635150802429642).

440 Stoeckle, M. Y., Das Mishu, M., & Charlop-Powers, Z. (2020). Improved environmental DNA reference library
441 detects overlooked marine fishes in New Jersey, United States. *Frontiers in Marine Science*, 7, 226, DOI:
442 [10.3389/fmars.2020.00226](https://doi.org/10.3389/fmars.2020.00226).

443 Stoeckle, M. Y., Mishu, M. D., & Charlop-Powers, Z. (2018). GoFish: a streamlined environmental DNA pres-
444 ence/absence assay for marine vertebrates. *PLoS ONE*, 13, e0198717, DOI: [10.1101/331322](https://doi.org/10.1101/331322).

445 Taberlet, P., Bonin, A., Zinger, L., & Coissac, E. (2018). *Environmental DNA: For Biodiversity Research and Monitoring*.
446 Oxford University Press, Oxford, DOI: [10.1093/oso/9780198767220.001.0001](https://doi.org/10.1093/oso/9780198767220.001.0001).

447 Taberlet, P., Coissac, E., Pompanon, F., Brochmann, C., & Willerslev, E. (2012). Towards next-
448 generation biodiversity assessment using DNA metabarcoding. *Molecular Ecology*, 21, 2045–2050, DOI:
449 [10.1111/j.1365-294X.2012.05470.x](https://doi.org/10.1111/j.1365-294X.2012.05470.x).

450 Ushey, K. (2021). renv: Project Environments. <https://cran.r-project.org/package=renv>. R package
451 version 0.12.5.

452 Valentini, A., Taberlet, P., Miaud, C., Civade, R., Herder, J., Thomsen, P. F., Bellemain, E., Besnard, A., Coissac, E.,
453 Boyer, F., Gaboriaud, C., Jean, P., Poulet, N., Roset, N., Copp, G. H., Geniez, P., Pont, D., Argillier, C., Baudoin,
454 J. M., Peroux, T., Crivelli, A. J., Olivier, A., Acqueberge, M., Le Brun, M., Møller, P. R., Willerslev, E., & Dejean, T.
455 (2016). Next-generation monitoring of aquatic biodiversity using environmental DNA metabarcoding. *Molecular*
456 *Ecology*, 25, 929–942, DOI: [10.1111/mec.13428](https://doi.org/10.1111/mec.13428).

457 Ward, R. D., Zemlak, T. S., Innes, B. H., Last, P. R., & Hebert, P. D. N. (2005). DNA barcoding Australia's

458 fish species. *Philosophical Transactions of the Royal Society B: Biological Sciences*, 360, 1847–1857, DOI:
459 [10.1098/rstb.2005.1716](https://doi.org/10.1098/rstb.2005.1716).

460 Weigand, H., Beermann, A. J., Fedor, Č., Costa, F. O., Csabai, Z., Geiger, M. F., Rimet, F., Rulik, B., Strand, M.,
461 Szucsich, N., Weigand, A. M., Willassen, E., Wyler, A., Bouchez, A., Borja, A., Zuzana, Č., Ferreira, S., Dijkstra,
462 K. B., Eisendle, U., Freyhof, J., Gadawski, P., Graf, W., Haegerbaeumer, A., Hoorn, B. B. V. D., Japoshvili, B.,
463 Keresztes, L., Keskin, E., Leese, F., Macher, J. N., Mamos, T., Paz, G., Pe, V., Maric, D., Andreas, M., Price,
464 B. W., Rinkevich, B., Teixeira, M. A. L., Várbíró, G., & Ekrem, T. (2019). DNA barcode reference libraries for the
465 monitoring of aquatic biota in Europe: Gap-analysis and recommendations for future work. *Science of the Total*
466 *Environment*, 678, 499–524, DOI: [10.1016/j.scitotenv.2019.04.247](https://doi.org/10.1016/j.scitotenv.2019.04.247).

467 Winter, D. J. (2017). rentrez: an R package for the NCBI eUtils API. *The R Journal*, 9, 520–526.

468 Wong, E. H. K. & Hanner, R. H. (2008). DNA barcoding detects market substitution in North American seafood. *Food*
469 *Research International*, 41, 828–837, DOI: [10.1016/j.foodres.2008.07.005](https://doi.org/10.1016/j.foodres.2008.07.005).