



## LJMU Research Online

Hashimoto, K, Bruno, D, Pomara, N, Nierenberg, J, Marmar, C, Zetterberg, H and Blennow, K

**Abnormality in glutamine-glutamate cycle in the cerebrospinal fluid of cognitively intact elderly individuals with major depressive disorder: a 3-year follow-up study**

<http://researchonline.ljmu.ac.uk/id/eprint/2893/>

### Article

**Citation** (please note it is advisable to refer to the publisher's version if you intend to cite from this work)

**Hashimoto, K, Bruno, D, Pomara, N, Nierenberg, J, Marmar, C, Zetterberg, H and Blennow, K (2016) Abnormality in glutamine-glutamate cycle in the cerebrospinal fluid of cognitively intact elderly individuals with major depressive disorder: a 3-year follow-up study. *Translational Psychiatry*. 6.**

LJMU has developed **LJMU Research Online** for users to access the research output of the University more effectively. Copyright © and Moral Rights for the papers on this site are retained by the individual authors and/or other copyright owners. Users may download and/or print one copy of any article(s) in LJMU Research Online to facilitate their private study or for non-commercial research. You may not engage in further distribution of the material or use it for any profit-making activities or any commercial gain.

The version presented here may differ from the published version or from the version of the record. Please see the repository URL above for details on accessing the published version and note that access may require a subscription.

For more information please contact [researchonline@ljmu.ac.uk](mailto:researchonline@ljmu.ac.uk)

<http://researchonline.ljmu.ac.uk/>



## ORIGINAL ARTICLE

# Abnormality in glutamine–glutamate cycle in the cerebrospinal fluid of cognitively intact elderly individuals with major depressive disorder: a 3-year follow-up study

K Hashimoto<sup>1</sup>, D Bruno<sup>2</sup>, J Nierenberg<sup>3,4</sup>, CR Marmar<sup>4</sup>, H Zetterberg<sup>5,6</sup>, K Blennow<sup>5</sup> and N Pomara<sup>3,4</sup>

Major depressive disorder (MDD), common in the elderly, is a risk factor for dementia. Abnormalities in glutamatergic neurotransmission via the *N*-methyl-*D*-aspartate receptor (NMDA-R) have a key role in the pathophysiology of depression. This study examined whether depression was associated with cerebrospinal fluid (CSF) levels of NMDA-R neurotransmission-associated amino acids in cognitively intact elderly individuals with MDD and age- and gender-matched healthy controls. CSF was obtained from 47 volunteers (MDD group, *N* = 28; age- and gender-matched comparison group, *N* = 19) at baseline and 3-year follow-up (MDD group, *N* = 19; comparison group, *N* = 17). CSF levels of glutamine, glutamate, glycine, *L*-serine and *D*-serine were measured by high-performance liquid chromatography. CSF levels of amino acids did not differ across MDD and comparison groups. However, the ratio of glutamine to glutamate was significantly higher at baseline in subjects with MDD than in controls. The ratio decreased in individuals with MDD over the 3-year follow-up, and this decrease correlated with a decrease in the severity of depression. No correlations between absolute amino-acid levels and clinical variables were observed, nor were correlations between amino acids and other biomarkers (for example, amyloid- $\beta_{42}$ , amyloid- $\beta_{40}$ , and total and phosphorylated tau protein) detected. These results suggest that abnormalities in the glutamine–glutamate cycle in the communication between glia and neurons may have a role in the pathophysiology of depression in the elderly. Furthermore, the glutamine/glutamate ratio in CSF may be a state biomarker for depression.

*Translational Psychiatry* (2016) 6, e66; doi:10.1038/tp.2016.8; published online xx xxx 2016

## INTRODUCTION

Late-life depression, one of the most common psychiatric disorders in older adults, is associated with significant functional impairment, variable treatment response, high recurrence rates, chronicity and high rates of medical comorbidity and mortality.<sup>1,2</sup> Multiple lines of evidence suggest that late-life depression is a risk factor for the development of dementia, including Alzheimer's disease (AD) and vascular dementia.<sup>2–4</sup> However, the precise molecular mechanisms underlying the relationship between late-life depression and dementia risk remain unknown. Better understanding this relationship would likely contribute to improving preventive interventions in the elderly.

Glutamate (or *L*-glutamic acid) has an important role as the major excitatory neurotransmitter in the central nervous system. In the brain, glutamate is synthesized from glutamine by glutaminase, and metabolized to glutamine by glutamine synthetase (GS) in astrocytes.<sup>5–8</sup> Accumulating evidence suggests that abnormalities in the glutamatergic neurotransmission via the *N*-methyl-*D*-aspartate receptor (NMDA-R) have a key role in the pathophysiology of major depressive disorder (MDD).<sup>5,6,8–12</sup> Hashimoto *et al.*<sup>13</sup> reported increased levels of glutamate in the prefrontal cortex in postmortem brain samples from MDD and bipolar disorder, suggesting a role of the glutamatergic system in mood disorders. A noninvasive *in vivo* proton magnetic resonance

spectroscopy (<sup>1</sup>H-MRS) study revealed increased levels of glutamate in the occipital cortex of patients with MDD,<sup>14</sup> although other <sup>1</sup>H-MRS studies found decreased levels of Glx (glutamate and glutamine) in the anterior cingulate cortex<sup>15</sup> and dorsomedial/dorsal anterolateral prefrontal cortex<sup>16</sup> in patients with MDD. In contrast, there was no difference in glutamate levels in the occipital cortex between MDD patients and controls.<sup>17</sup> A recent MRS study showed that young MDD (*N* = 90) and bipolar disorder (*N* = 75) groups (18–30 years) did not show different levels of hippocampal glutamate compared with controls (*N* = 40).<sup>18</sup> A recent meta-analysis showed a significant reduction in Glx levels, but not glutamate levels alone, in the brains of depressed patients compared with controls across the studies included.<sup>19</sup>

Levine *et al.*<sup>20</sup> reported higher cerebrospinal fluid (CSF) levels of glutamine in unmedicated patients with MDD. In contrast, a study showed low glutamate levels in the CSF of refractory patients with affective disorder.<sup>21</sup> A recent study showed no significant differences between the control (*N* = 25) and the MDD groups (*N* = 18) in baseline CSF levels of glutamate (*P* = 0.761) and glutamine (*P* = 0.226).<sup>22</sup> Thus, the results of studies on CSF levels of glutamine and glutamate in MDD patients are inconsistent. At present, there is no report that has evaluated the ratio of glutamine to glutamate in CSF of MDD patients although this ratio is an index of glutamine–glutamate cycle in glia–neuron

<sup>1</sup>Division of Clinical Neuroscience, Chiba University Center for Forensic Mental Health, Chiba, Japan; <sup>2</sup>Department of Psychology, Liverpool Hope University, Liverpool, UK; <sup>3</sup>Nathan S. Kline Institute Department of Psychiatry, New York University School of Medicine, Orangeburg, NY, USA; <sup>4</sup>Steven and Alexandra Cohen Veterans Center, Department of Psychiatry, New York University Langone Medical Center, New York, NY, USA; <sup>5</sup>Clinical Neurochemistry Laboratory, Institute of Neuroscience and Physiology, The Sahlgrenska Academy at the University of Gothenburg, Mölndal, Sweden and <sup>6</sup>Department of Molecular Neuroscience, UCL Institute of Neurology, London, UK. Correspondence: Professor K Hashimoto, Division of Clinical Neuroscience, Chiba University Center for Forensic Mental Health, 1-8-1 Inohana, Chiba 260-8670, Japan. E-mail: hashimoto@faculty.chiba-u.jp

Received 26 October 2015; revised 7 January 2016; accepted 14 January 2016

communication.<sup>5,6,8,23,24</sup> As the abnormalities in NMDA-R neurotransmission by altered glutamine–glutamate cycle in the brain may be involved in the pathophysiology of MDD,<sup>5,6</sup> it is of great interest to examine CSF levels of amino acids related with NMDA-R in elderly patients with MDD, and age- and gender-matched healthy controls.

In the present study, we measured CSF levels of amino acids (for example, glutamate, glutamine, glycine, D-serine and L-serine) in elderly patients with MDD, and age- and gender-matched healthy controls. All these amino acids can affect glutamatergic neurotransmission via the NMDA-R.<sup>13,25</sup> Furthermore, we also measured 3-year follow-up CSF samples in these subjects.

## MATERIALS AND METHODS

### Participants

This study was approved by the institutional review boards of the Nathan Kline Institute for Psychiatric Research and the New York University School of Medicine. Participants were volunteers who responded to advertisements in local newspapers and flyers, or were recruited from the Memory Education and Research Initiative Program.<sup>26</sup> All participants provided informed consent before examination, and received up to \$450.00 in compensation. A total of 133 participants completed the baseline evaluation, and 51 of these took part in the optional lumbar puncture procedure. Of these 51 participants, 3 were excluded because of evidence in their magnetic resonance imaging scans of confluent deep or periventricular white matter hyperintensities, defined as one or more hyperintense lesions measuring at least 10 mm in any direction. One individual was excluded because of a Mini-Mental State Examination (MMSE) score below 28. Of the 47 remaining participants, 28 were diagnosed with MDD by a board-certified psychiatrist, leaving 19 comparison subjects. The structural interview for DSM-IV disorders (SCID) was administered by a psychiatrist to establish an MDD diagnosis. Of the 28 individuals with MDD, 21 (75%) had recurrent episodes. Table 1 summarizes the demographic and clinical characteristics of the study participants at baseline.

### Procedure

The study was conducted over four visits, usually 1 week apart. The first three visits were conducted at the Nathan Kline Institute for Psychiatric Research and the Clinical and Translational Science Institute, New York University Langone Medical Center. During the first visit, for the purpose of obtaining informed consent, study procedures were explained and participants were informed of their rights. Participants' medical and psychiatric histories, including family history of AD, were also obtained, and their vital signs were measured. Participants then underwent a psychiatric evaluation, and their global cognitive status was assessed using the MMSE. In addition, the Hamilton Depression Rating Scale (HAM-D) was administered to rate the severity of current depressive symptoms. Subjects who met the criteria for past MDD but were not currently depressed (that is, HAM-D score below 16) were included as MDD subjects. Blood was drawn for routine medical testing and *APOE* genotyping. During the second visit, participants underwent a magnetic resonance imaging scan of the head to quantify the magnitude of vascular brain pathology. During the third visit, subjects underwent a comprehensive neuropsychological assessment, including the Buschke Selective Reminding Test,<sup>27</sup> the Trail-Making Test parts A and B,<sup>28</sup> and the category fluency test.<sup>29</sup>

Finally, during the fourth visit, a lumbar puncture was performed by a neuroradiologist under guided fluoroscopy in a subset of participants. Before the procedure, which was performed between 0900 and 1000 hours, participants were asked to fast overnight. A total of 15 ml of clear CSF was collected in three polypropylene tubes labeled 'A' (first 5 ml), 'B' (second 5 ml) and 'C' (third 5 ml). The tubes were immediately placed on ice for a maximum of 1 h until the samples were centrifuged at 4 °C (at 1500 r.p.m.) for 10 min. Then, aliquots of 0.25 ml were placed into 1.00-ml polypropylene cryogenic vials and put into Nunc eight-cell storage boxes (Nalge Nunc International, Rochester, NY, USA) at –80 °C. All amyloid- $\beta$ , tau and amino-acid determinations were performed from tube 'C'.

Among these participants, MDD patients ( $N=19$ ) and comparison control subjects ( $N=17$ ) were followed for 3 years. Fifteen individuals with MDD were receiving antidepressant treatment at the time of testing, but no differences in amyloid- $\beta_{42}$  levels were observed within the MDD group

as a function of antidepressant treatment.<sup>26</sup> Clinical data, including physical examination, routine laboratory tests, psychiatric evaluations, HAM-D rating scale, cognitive functions and CSF samples, were collected at 3-year follow-up.

### Measurement of amino acids

This study was also approved by the Research Ethics Committee of the Graduate School of Medicine, Chiba University. Measurement of CSF levels of amino acids was carried out using high-performance liquid chromatography (HPLC) system (Shimadzu Corporation, Kyoto, Japan) as previously reported.<sup>23,25,30</sup> Briefly, 15  $\mu$ l of H<sub>2</sub>O (HPLC grade), 20  $\mu$ l of 0.1 M borate buffer (pH 8.0) and 60  $\mu$ l of 50 mM NBD-F in CH<sub>3</sub>CN (HPLC grade) were added into 5  $\mu$ l of CSF sample. The reaction mixture was then heated at 60 °C for 2 min, and immediately supplemented with 100  $\mu$ l of H<sub>2</sub>O/CH<sub>3</sub>CN (90/10) containing 0.1% trifluoroacetic acid to stop the reaction.

For determination of DL-serine, L-serine and D-serine, a 20- $\mu$ l aliquot of the resultant solution was injected into the HPLC system.<sup>25,30</sup> A reversed-phase ODS column (TSKgel ODS-80Ts (Tosoh Corporation, Tokyo, Japan) as column 1) was used for the separation and quantification of total (D- and L-) serine, and the gradient elution of the mobile phase was maintained at a constant flow rate of 0.8 ml min<sup>-1</sup>. Mobile phase 1a consisted of H<sub>2</sub>O/CH<sub>3</sub>CN (90/10) containing 0.1% trifluoroacetic acid, and phases 1b and 1c, of H<sub>2</sub>O/CH<sub>3</sub>CN (10/90) containing 0.1% trifluoroacetic acid and CH<sub>3</sub>CN, respectively. The time program for gradient elution was as follows: 0–25 min 1a:1b:1c=92:8:0; 25–25.1 min linear gradient from 8% 1b to 100% 1b; 25.1–35 min 1a:1b:1c=0:100:0; 35–35.1 min linear gradient from 8% 1b to 100% 1c; 35.1–40 min 1a:1b:1c=0:0:100; and 40.1–60 min 1a:1b:1c=92:8:0. The chiral column (column 2) used for the separation and quantification of D- and L-serine with NBD-F comprised two Sumichiral OA-2500 columns (Sumika Chemical Analysis Service, Osaka, Japan), which were connected in tandem. The mobile phase was 15 mM citric acid in MeOH. The flow rate was isocratically pumped at 1.0 ml min<sup>-1</sup>. The column temperature of all columns was maintained at 35 °C. Fluorescence detection was performed at 530 nm, with an excitation wavelength at 470 nm.

For determination of glycine, glutamine and glutamate, a reversed-phase ODS column (TSKgel ODS-80Ts, Tosoh Corporation) was used.<sup>23,30</sup> The gradient elution of the mobile phase was kept at a constant flow rate of 0.8 ml min<sup>-1</sup>. The time program for gradient elution was programmed as follows: 0–50.5 min 1a:1b:1c=95:5:0; 50.5–55.5 min 1a:1b:1c=0:100:0; and 55.5–57 min 1a:1b:1c=0:0:100. The column temperature of all columns was maintained at 35 °C. Fluorescence detection was performed at 530 nm, with an excitation wavelength at 470 nm.

### Statistical analysis

First, Student *t*- and  $\chi^2$ -tests were used to compare the MDD and comparison groups with respect to dimensions not associated with depression (that is, MMSE score, years of education, body mass index, age, incidence of diabetes, gender, *APOE* status and reported family history of AD; Table 1). Second, Student *t*-test was used to compare the two diagnostic groups with respect to all remaining CSF variables. Third, 3-year follow-up data were analyzed using a 2X2 repeated-measures analysis of variance; the factors were time (baseline and follow-up) and MDD status (MDD and controls). All tests were two-tailed, and statistical significance was established at an  $\alpha$  of 0.05, unless differently noted. All analyses were conducted using SPSS 22 (SPSS, Chicago, IL, USA).

## RESULTS

As reported previously,<sup>26</sup> the two groups at baseline did not differ on any relevant clinical or demographic variable, with the exception of the mean HAM-D score, which was significantly higher in the MDD group (Table 1). Of note, the proportion of participants with a reported family history of AD was slightly higher in the comparison group than in the MDD group. The CSF levels of amyloid- $\beta_{42}$  in the MDD group at baseline were significantly lower than those of the comparison group, whereas differences in CSF levels of amyloid- $\beta_{40}$ , and total and phosphorylated tau protein at baseline did not reach statistical significance across conditions (Table 1).<sup>26</sup>

There were no significant differences in levels of five amino acids (glutamine, glutamate, glycine, L-serine and D-serine)

**Table 1.** Demographic and clinical characteristics of cognitively intact individuals with MDD and age-matched comparison subjects at baseline

| Characteristic                        | Comparison group (N = 19) | MDD group (N = 28)  | Statistical analysis |    |                |
|---------------------------------------|---------------------------|---------------------|----------------------|----|----------------|
|                                       |                           |                     | t                    | df | P              |
| Age (years)                           | 68.1 ± 7.3                | 66.5 ± 5.4          | 0.835                | 45 | 0.41           |
| Education (years) <sup>a</sup>        | 16.7 ± 2.7                | 16.5 ± 2.7          | 0.274                | 44 | 0.79           |
| Body mass index                       | 28.1 ± 4.7                | 28.8 ± 6.7          | 0.378                | 45 | 0.71           |
| 21-item HAM-D                         | 1.2 ± 1.9                 | 14.9 ± 8.8          | 8.02                 | 45 | < <b>0.001</b> |
| MMSE                                  | 29.5 ± 0.5                | 29.8 ± 0.6          | 1.56                 | 45 | 0.13           |
| Total recall rating                   | 64.4 ± 12.3               | 64.9 ± 13.9         | 0.11                 | 45 | 0.91           |
| Delayed recall rating                 | 8.5 ± 2.8                 | 9.5 ± 2.5           | 1.258                | 45 | 0.22           |
| <i>Trail-Making Test score</i>        |                           |                     |                      |    |                |
| Part A                                | 37.2 ± 12.4               | 36.0 ± 14.1         | 0.303                | 45 | 0.76           |
| Part B                                | 80.3 ± 31.5               | 86.1 ± 23.2         | 0.737                | 45 | 0.47           |
| Category fluency test                 | 41.7 ± 8.1                | 40.6 ± 8.2          | 0.45                 | 45 | 0.66           |
|                                       | N (%)                     | N (%)               | $\chi^2$             | df | P              |
| Diabetes                              | 4 (21)                    | 5 (18)              | 0.08                 | 1  | 0.79           |
| Female                                | 12 (63)                   | 10 (36)             | 2.41                 | 1  | 0.12           |
| <i>Apolipoprotein ε level</i>         |                           |                     |                      |    |                |
| ε4                                    | 5 (26)                    | 11 (39)             | 0.369                | 1  | 0.54           |
| ε2                                    | 6 (32)                    | 7 (25)              | 0.03                 | 1  | 0.87           |
| Family history of Alzheimer's disease | 6 (32)                    | 3 (11)              | 3.3                  | 1  | 0.07           |
|                                       | pg ml <sup>-1</sup>       | pg ml <sup>-1</sup> | t                    | df | P              |
| Amyloid-β <sub>42</sub>               | 335.4 ± 182.7             | 224.7 ± 125.1       | 2.471                | 45 | <b>0.02</b>    |
| Amyloid-β <sub>40</sub>               | 6518.0 ± 2687.0           | 5146.0 ± 2369.0     | 1.845                | 45 | 0.07           |
| Total tau protein <sup>b</sup>        | 328.7 ± 151.7             | 273.0 ± 114.3       | 1.422                | 44 | 0.16           |
| Phosphorylated tau protein            | 51.6 ± 20.9               | 48.9 ± 25.9         | 0.371                | 45 | 0.71           |

Abbreviations: df, degrees of freedom; 21-item HAM-D, 21-item Hamilton Depression Rating Scale; MDD, major depressive disorder; MMSE, Mini-Mental State Examination. The data are mean ± s.d. The data at baseline are from Pomara *et al.*<sup>26</sup> <sup>a</sup>Data for one control subject were not available. <sup>b</sup>Data for one MDD patient were not available.

**Table 2.** CSF levels of amino acids and ratio of amino acids in subjects at baseline

| Characteristic      | Comparison group at baseline (N = 19) | MDD group at baseline (N = 28) | Analysis |                   |                          |
|---------------------|---------------------------------------|--------------------------------|----------|-------------------|--------------------------|
|                     |                                       |                                | t        | df                | P                        |
| Glutamine           | 568.17 ± 81.19                        | 591.04 ± 87.78                 | 0.903    | 45                | 0.371                    |
| Glutamate           | 0.647 ± 0.82                          | 0.382 ± 0.11                   | 1.407    | 18.5 <sup>a</sup> | 0.176                    |
| Glycine             | 12.99 ± 5.95                          | 11.38 ± 2.67                   | 1.103    | 23.0 <sup>a</sup> | 0.282                    |
| L-Serine            | 25.45 ± 5.58                          | 22.36 ± 5.13                   | 1.955    | 45                | 0.057                    |
| D-Serine            | 1.76 ± 0.38                           | 1.75 ± 0.43                    | 0.093    | 45                | 0.926                    |
| Glutamine/glutamate | 1257.6 ± 458.4                        | 1645.6 ± 434.7                 | 2.938    | 45                | <b>0.005<sup>b</sup></b> |
| Glycine/L-serine    | 0.496 ± 0.14                          | 0.526 ± 0.14                   | 0.7      | 45                | 0.488                    |
| D-Serine/L-serine   | 0.072 ± 0.021                         | 0.080 ± 0.019                  | 1.326    | 45                | 0.192                    |

Abbreviations: CSF, cerebrospinal fluid; df, degrees of freedom; MDD, major depressive disorder. The data are mean ± s.d. <sup>a</sup>Equality of variance assumption not met. <sup>b</sup>Denotes significant finding at  $\alpha = 0.006$  after Sidak's adjustment (eight tests).

between the MDD (N = 28) and the comparison groups (N = 19) at baseline (Table 2). However, the ratio of glutamine to glutamate in the MDD group was significantly higher than in the comparison group, whereas the ratio of glycine to L-serine and the ratio of D-serine to L-serine did not differ (Table 2). Furthermore, there were no correlations between CSF amino acids and typical AD biomarkers (amyloid-β<sub>42</sub>, amyloid-β<sub>40</sub>, and total and phosphorylated tau protein) at baseline in all subjects (data not shown).

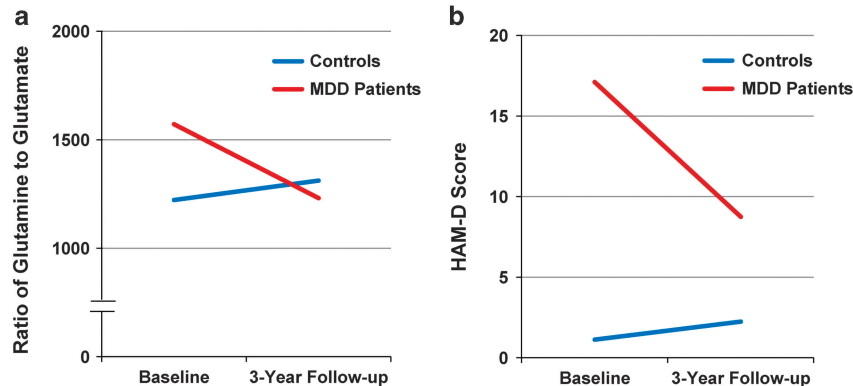
At the 3-year follow-up, an interaction between time and MDD status was observed for the HAM-D scores. *Post hoc* comparisons confirmed that the severity of depression decreased over time in participants with MDD (P = 0.001), whereas no change was

detected in controls (P = 0.366; Table 3 and Figure 1). When the same repeated-measures analysis of variance was applied to CSF levels of amino acids, no further interactions or main effects were observed when setting  $\alpha$  at 0.006 (Sidak correction; eight tests), although a trend was observed for an interaction with the glutamine/glutamate ratio (Table 3 and Figure 1). *Post hoc* comparisons suggested that there was a decrease in this ratio in MDD subjects (P = 0.008), but no appreciable change in controls (P = 0.571). Finally, we observed a marginally significant negative correlation ( $r = -0.328$ , P = 0.051) between the change scores (baseline to follow-up) of the glutamine/glutamate ratio and of

**Table 3.** HAM-D score and CSF levels of amino acids and ratio in subjects at baseline and 3-year follow-up

| Characteristic          | Baseline                  |                    | 3-year follow-up          |                    | Analyses (P-values) |                |                |
|-------------------------|---------------------------|--------------------|---------------------------|--------------------|---------------------|----------------|----------------|
|                         | Comparison group (N = 17) | MDD group (N = 19) | Comparison group (N = 17) | MDD group (N = 19) | ME time             | ME MDD         | Interaction    |
| 21-item HAM-D           | 1.118 ± 1.900             | 17.105 ± 10.493    | 2.235 ± 6.006             | 8.737 ± 8.096      | <b>0.005</b>        | < <b>0.001</b> | < <b>0.001</b> |
| Glutamine               | 567.0 ± 83.2              | 587.1 ± 85.1       | 604.8 ± 80.7              | 594.5 ± 90.4       | 0.175               | 0.835          | 0.359          |
| Glutamate               | 0.680 ± 0.86              | 0.399 ± 0.116      | 0.655 ± 0.788             | 0.652 ± 0.658      | 0.482               | 0.355          | 0.395          |
| Glycine                 | 13.30 ± 6.18              | 11.96 ± 2.79       | 13.2 ± 4.51               | 13.37 ± 5.20       | 0.456               | 0.668          | 0.388          |
| L-Serine                | 25.8 ± 5.68               | 23.23 ± 5.69       | 25.0 ± 5.66               | 25.4 ± 7.79        | 0.564               | 0.537          | 0.207          |
| D-Serine                | 1.76 ± 0.40               | 1.75 ± 0.45        | 1.80 ± 0.41               | 1.91 ± 0.49        | 0.09                | 0.717          | 0.315          |
| Glutamine/<br>glutamate | 1221.98 ± 472.7           | 1571.21 ± 440.2    | 1311.06 ± 463.9           | 1230.63 ± 455.9    | 0.192               | 0.271          | <b>0.029</b>   |
| Glycine/L-serine        | 0.501 ± .147              | 0.536 ± 0.153      | 0.546 ± 0.208             | 0.535 ± 0.128      | 0.467               | 0.787          | 0.454          |
| D-Serine/L-serine       | 0.071 ± .021              | 0.078 ± 0.021      | 0.074 ± 0.018             | 0.079 ± 0.021      | 0.277               | 0.41           | 0.673          |

Abbreviations: CSF, cerebrospinal fluid; 21 HAM-D, 21-item Hamilton Depression Rating Scale; MDD, major depressive disorder; ME MDD, main effect of MDD status (depressed and controls); ME time, main effect of time (baseline and follow-up). The data are mean ± s.d. The analysis method used was 2 × 2 repeated-measures analysis of variance.



**Figure 1.** Three-year follow-up of elderly MDD patients and control comparison. (a) The ratio of glutamine to glutamate in the cerebrospinal fluid (CSF) from major depressive disorder (MDD) patient group (N = 19) was significantly decreased at 3-year follow-up. In contrast, the ratio of glutamine to glutamate in the CSF from control comparison group (N = 17) was slightly increased at 3-year follow-up. (b) The Hamilton Depression Rating Scale (HAM-D) score in the MDD patient group (N = 19) was significantly decreased at 3-year follow-up. In contrast, HAM-D score in the control comparison group (N = 17) was slightly increased at 3-year follow-up.

HAM-D scores in all subjects, suggesting that as depression severity decreased, so did the ratio.

## DISCUSSION

In the present study, we found that older individuals with MDD showed an increased CSF glutamine/glutamate ratio compared with controls, although CSF levels of the individual amino acids were not different. To our knowledge, this is the first report in the literature of an increase in the glutamine/glutamate ratio in elderly MDD subjects, suggesting abnormalities in the glutamine–glutamate cycle in the brains of elderly depressed individuals. As the glutamine/glutamate ratio is an index for glutamine–glutamate cycle in the glia–neuron communication,<sup>8,23</sup> it is likely that abnormalities in the glutamine–glutamate cycle in the brain have a role in the pathophysiology of late-life depression.

We previously reported a reduction of amyloid- $\beta_{42}$  in the same MDD patients at baseline.<sup>26</sup> Importantly, the glutamine/glutamate ratio in elderly MDD patients was no longer significantly different from controls after a 3-year period; the loss of significance coincided with reduction in the severity of depressive symptoms, suggesting that abnormalities in this ratio in depression may be state- and not trait-dependent. However, we found no significant correlations between the ratio or levels of the individual amino acids and AD biomarkers, or severity of depressive symptoms

either at the baseline or follow-up. These results are generally consistent with previous findings of CSF studies that also reported a lack of significant correlations between these amino acids and severity of depressive symptoms. Garakani *et al.*<sup>22</sup> reported no significant differences between controls and MDD patients in baseline CSF levels of glutamate ( $P=0.761$ ) or glutamine ( $P=0.226$ ). Furthermore, there was a significant positive correlation ( $r=0.677$ ,  $P=0.016$ ) between intensity of suicidal ideation and CSF glutamate, and a significant negative correlation ( $r=-0.558$ ,  $P=0.038$ ) between baseline HAM-D score and the glutamine/glutamate ratio in adult patients (mean age of 40.4 years) with MDD. It is thus very difficult to reconcile the lack of significant correlations between the CSF ratio and severity of depressive symptoms with evidence that the increased CSF glutamine/glutamate ratio and other glutamatergic abnormalities associated with MDD might be state-dependent. Taken together, these findings highlight the limitations of static indices such as levels of glutamate or glutamine either in CSF or brain to reflect dynamic and brain region-specific alterations in the glutamatergic function. Using *in vivo*  $^{13}\text{C}$ -MRS and  $[1-^{13}\text{C}]$ glucose in a single voxel spectroscopy study, Abdallah *et al.*<sup>31</sup> found that measures of the neuronal tricarboxylic acid cycle in the occipital cortex from medication-free MDD patients was 26% lower compared with controls, suggesting mitochondrial dysfunction in depression. However, they reported no significant alterations in the

glutamine–glutamate cycle and  $\gamma$ -aminobutyric acid (GABA) synthesis, inconsistent with our CSF findings. Furthermore, this study did not find any correlations with severity of depression.<sup>31</sup> One possibility is that the investigators focused only on the occipital cortex, and they did not examine CSF or other brain regions in which glutamatergic abnormalities have been found.

Glutamate is synthesized from glutamine by glutaminase, and metabolized to glutamine by the mainly astrocyte-located GS. In addition, glutamate is metabolized to GABA by glutamic acid decarboxylase (GAD).<sup>8</sup> Released glutamate is taken up by surrounding astrocytes via the glutamate transporter, where it is converted to glutamine, transported back to presynaptic neurons and reconverted to glutamate. Thus, the glutamine–glutamate–GABA cycle as part of glia–neuron communication has an important role in excitatory and inhibitory neurotransmission.<sup>8</sup> The expression of GS mRNA was reduced in the prefrontal cortex, premotor cortex and amygdala from depressed suicide subjects, but not in suicide completers without depression.<sup>32,33</sup> Furthermore, GS protein was decreased in the anterior cingulate cortex and orbitofrontal cortex from depressed patients.<sup>32,34,35</sup> A recent study using postmortem brain samples showed that the density of GS-expressing astrocytes was significantly reduced in some cortical areas from MDD patients, suggesting a disturbance in the glutamine–glutamate cycle in MDD.<sup>36</sup> Moreover, the immunoreactivity of EAAT2, one of the glutamate transporters in astrocytes, in the orbitofrontal cortex was significantly lower in MDD patients.<sup>35</sup> In addition, increased immunoreactivity for GAD65/67 was demonstrated in neurons from several cortical regions, including orbitofrontal and dorsolateral prefrontal cortex, in depressed patients.<sup>37</sup> By contrast, the amount of GAD67 in the dorsolateral prefrontal cortex of MDD patients was significantly reduced as compared with matched controls.<sup>38</sup> These findings suggest a dysregulation of the glutamate–GABA cycle in depression. Taken together, it is likely that abnormalities in the glutamine–glutamate–GABA cycle in the brain have a role in the pathophysiology of depression.

In this study, we found that the glutamine/glutamate ratio in MDD patients was significantly decreased after 3-year follow-up in concert with improvement in depressive symptoms. Given the role of glutamatergic neurotransmission in the mechanisms of antidepressants,<sup>5,6</sup> it is noteworthy that symptom improvement caused by antidepressants may be mediated by effects on glutamine–glutamate cycle in the brains from depressed patients. In contrast, HAM-D score and the glutamine/glutamate ratio in healthy subjects were slightly increased after 3-year follow-up, although these increases were not statistically significant.

CSF levels of glutamine in individuals with AD were reported to be lower than in controls,<sup>39</sup> whereas CSF levels of glutamate were higher.<sup>40,41</sup> Although the glutamine/glutamate ratio was not measured in either study, and depression was not a focus of either investigation, these results do not support a link between the abnormalities in the glutamine–glutamate cycle in depression with those in AD. Increased CSF levels of GS in individuals with AD compared with controls also has been reported.<sup>42,43</sup> In contrast, a recent study using a quantitative ELISA system showed that CSF levels of total GS in AD patients were not different from those observed in healthy controls,<sup>44</sup> suggesting that total CSF levels of GS may not be a suitable biomarker for AD, or that further work needs to be done with this biomarker to clarify whether GS abnormalities exist in AD that are associated with the apparent abnormalities in mood disorders.

The NMDA-R antagonist ketamine is known to produce a rapid and sustained antidepressant effect in treatment-resistant patients with MDD.<sup>11,12</sup> A recent MRS study demonstrated that a single infusion of ketamine (0.5 mg kg<sup>-1</sup>) caused an increase of Glx and GABA in the medial prefrontal cortex of MDD patients in ~26 min,<sup>45</sup> indicating that ketamine has a rapid effect on the glutamine–glutamate–GABA cycle in the prefrontal cortex in

depressed patients. In contrast, earlier studies showed that a single infusion of ketamine (0.5 mg kg<sup>-1</sup>) did not produce changes in glutamate and glutamine concentrations in occipital cortex in MDD patients,<sup>46</sup> or in the anterior cingulate/medial prefrontal cortex in healthy subjects,<sup>47</sup> suggesting that changes in occipital amino-acid levels are not correlated with ketamine's antidepressant action. Thus, it would be of great interest to measure CSF amino acids in MDD patients at baseline and after a single ketamine infusion.

Finally, there are some limitations to this study that should be noted. The main limitation was small sample size, and similar, future studies in geriatric depression would likely benefit from larger sample sizes. Another limitation was the inability to measure CSF GABA in the subjects of this study. We could not measure CSF levels of GABA because these were below the lower limit of detection of our HPLC system. Given the key role of glutamine–glutamate–GABA cycle in glia–neuron communication,<sup>5,8</sup> it is of great interest to measure CSF GABA levels using a high-sensitive analytical system (for example, LC/MS/MS).

In conclusion, we found that the CSF ratio of glutamine/glutamate levels in elderly patients with MDD was significantly higher than that of age-matched healthy controls, and that the increased ratio in patients was significantly decreased after 3-year follow-up by medication in conjunction with decreased depression symptoms over this time period. These findings suggest that abnormalities in the glutamine–glutamate cycle in the glia–neuron communication have a role in the pathophysiology of elderly depression. Further studies measuring CSF levels of amino acids (for example, glutamine, glutamate and GABA) using larger cohorts, particularly cohorts of antidepressant-naïve patients, will be of great interest.

## CONFLICT OF INTEREST

The authors declare no conflict of interest.

## ACKNOWLEDGMENTS

We acknowledge Ms Yuko Fujita (Chiba University, Japan) for her technical assistance in the measurement of amino acids. This research was supported by grants from Comprehensive Research on Disability, Japan Agency for Medical Research and Development (AMED) (to KH, H26-seishin-ippan-015); the Grant-in-Aid for Scientific Research on Innovative Areas of the Ministry of Education, Culture, Sports, Science and Technology, Japan (to KH, 24116006); the Grant-in-Aid for Challenging Exploratory Research, JSPS (to KH, 15K15423); the Torsten Söderberg Foundation at the Royal Swedish Academy of Sciences; the Knut and Alice Wallenberg Foundation; the Swedish Research Council; and the NIMH (to NP, R01 MH-080405). We are also thankful to the patients and controls participating in this study.

## REFERENCES

- 1 Byers AL, Yaffe K, Covinsky KE, Friedman MB, Bruce ML. High occurrence of mood and anxiety disorders among older adults: The National Comorbidity Survey Replication. *Arch Gen Psychiatry* 2010; **67**: 489–496.
- 2 Diniz BS, Butters MA, Albert SM, Dew MA, Reynolds CF. Late-life depression and risk of vascular dementia and Alzheimer's disease: systematic review and meta-analysis of community-based cohort studies. *Br J Psychiatry* 2013; **202**: 329–335.
- 3 Ownby RL, Crocco E, Acevedo A, John V, Loewenstein D. Depression and risk for Alzheimer disease: systematic review, meta-analysis, and meta-regression analysis. *Arch Gen Psychiatry* 2006; **63**: 530–538.
- 4 Barnes DE, Yaffe K, Byers AL, McCormick M, Schaefer C, Whitmer RA. Midlife vs late-life depressive symptoms and risk of dementia: differential effects for Alzheimer disease and vascular dementia. *Arch Gen Psychiatry* 2012; **69**: 493–498.
- 5 Hashimoto K. Emerging role of glutamate in the pathophysiology of major depressive disorder. *Brain Res Rev* 2009; **61**: 105–123.
- 6 Hashimoto K, Malchow B, Falkai P, Schmitt A. Glutamate modulators as potential therapeutic drugs in schizophrenia and affective disorders. *Eur Arch Psychiatry Clin Neurosci* 2013; **263**: 367–377.
- 7 Hertz L. The glutamate-glutamine (GABA) cycle: importance of late postnatal development and potential reciprocal interactions between biosynthesis and

- degradation. *Front Endocrinol (Lausanne)* 2013; **4**: 59.
- 8 Hashimoto K. Targeting of NMDA receptors in new treatments for schizophrenia. *Expert Opin Ther Targets* 2014; **18**: 1049–1063.
  - 9 Sanacora G, Zarate CA, Krystal JH, Manji HK. Targeting the glutamatergic system to develop novel, improved therapeutics for mood disorders. *Nat Rev Drug Discov* 2008; **7**: 426–437.
  - 10 Zarate C Jr, Machado-Vieira R, Henter I, Ibrahim L, Diazgranados N, Salvatore G. Glutamatergic modulators: the future of treating mood disorders? *Harv Rev Psychiatry* 2010; **18**: 293–303.
  - 11 Krystal JH, Sanacora G, Duman RS. Rapid-acting glutamatergic antidepressants: the path to ketamine and beyond. *Biol Psychiatry* 2013; **73**: 1133–1141.
  - 12 Sanacora G, Schatzberg AF. Ketamine: promising path or false prophecy in the development of novel therapeutics for mood disorders? *Neuropsychopharmacology* 2015; **40**: 259–267.
  - 13 Hashimoto K, Sawa A, Iyo M. Increased levels of glutamate in brains from patients with mood disorders. *Biol Psychiatry* 2007; **62**: 1310–1316.
  - 14 Sanacora G, Gueorguieva R, Epperson CN, Wu YT, Appel M, Rothman DL *et al*. Subtype-specific alterations of gamma-aminobutyric acid and glutamate in patients with major depression. *Arch Gen Psychiatry* 2004; **61**: 705–713.
  - 15 Auer DP, Pütz B, Kraft E, Lipinski B, Schill J, Holsboer F. Reduced glutamate in the anterior cingulate cortex in depression: an in vivo proton magnetic resonance spectroscopy study. *Biol Psychiatry* 2000; **47**: 305–313.
  - 16 Hasler G, van der Veen JW, Tuminis T, Meyers N, Shen J, Drevets WC. Reduced prefrontal glutamate/glutamine and gamma-aminobutyric acid levels in major depression determined using proton magnetic resonance spectroscopy. *Arch Gen Psychiatry* 2007; **64**: 193–200.
  - 17 Godlewska BR, Near J, Cowen PJ. Neurochemistry of major depression: a study using magnetic resonance spectroscopy. *Psychopharmacology (Berl)* 2015; **232**: 501–507.
  - 18 Hermens DF, Naismith SL, Chitty KM, Lee RS, Tickell A, Duffy SL *et al*. Cluster analysis reveals abnormal hippocampal neurometabolic profiles in young people with mood disorders. *Eur Neuropsychopharmacol* 2015; **25**: 836–845.
  - 19 Arnone D, Mumuni AN, Jauhar S, Condon B, Cavanagh J. Indirect evidence of selective glial involvement in glutamate-based mechanisms of mood regulation in depression: meta-analysis of absolute prefrontal neuro-metabolic concentrations. *Eur Neuropsychopharmacol* 2015; **25**: 1109–1117.
  - 20 Levine J, Panchalingam K, Rapoport A, Gershon S, McClure RJ, Pettegrew JW. Increased cerebrospinal fluid glutamine levels in depressed patients. *Biol Psychiatry* 2000; **47**: 586–593.
  - 21 Frye MA, Tsai GE, Huggins T, Coyle JT, Post RM. Low cerebrospinal fluid glutamate and glycine in refractory affective disorder. *Biol Psychiatry* 2007; **61**: 162–166.
  - 22 Garakani A, Martinez JM, Yehuda R, Gorman JM. Cerebrospinal fluid levels of glutamate and corticotropin releasing hormone in major depression before and after treatment. *J Affect Disord* 2013; **146**: 262–265.
  - 23 Hashimoto K, Engberg G, Shimizu E, Nordin C, Lindstrom LH, Iyo M. Elevated glutamine/glutamate ratio in cerebrospinal fluid of first episode and drug naïve schizophrenic patients. *BMC Psychiatry* 2005; **5**: 6.
  - 24 Hashimoto K. Abnormalities of the glutamine–glutamate–GABA cycle in the schizophrenia brain. *Schizophr Res* 2014; **156**: 281–282.
  - 25 Pålsson E, Jakobsson J, Södersten K, Fujita Y, Sellgren C, Ekman CJ *et al*. Markers of glutamate signaling in cerebrospinal fluid and serum from patients with bipolar disorder and healthy controls. *Eur Neuropsychopharmacol* 2015; **25**: 133–140.
  - 26 Pomara N, Bruno D, Sarreal AS, Hernando RT, Nierenberg J, Petkova E *et al*. Lower CSF amyloid beta peptides and higher F2-isoprostanes in cognitively intact elderly individuals with major depressive disorder. *Am J Psychiatry* 2012; **169**: 523–530.
  - 27 Buschke H. Retrieval in human learning. *Trans N Y Acad Sci* 1974; **36**: 721–729.
  - 28 Army Individual Test Battery *Manual of Directions and Scoring*. Adjutant General's Office, War Department: Washington, DC, USA, 1994.
  - 29 Goodglass H, Kaplan E. *Assessment of Aphasia and Related Disorders*. Lea & Febiger: Philadelphia, PA, USA, 1972.
  - 30 Fukushima T, Kawai J, Imai K, Toyooka T. Simultaneous determination of D- and L-serine in rat brain microdialysis sample using a column-switching HPLC with fluorimetric detection. *Biomed Chromatogr* 2004; **18**: 813–819.
  - 31 Abdallah CG, Jiang L, De Feyter HM, Fasula M, Krystal JH, Rothman DL *et al*. Glutamate metabolism in major depressive disorder. *Am J Psychiatry* 2014; **171**: 1320–1327.
  - 32 Choudary PV, Molnar M, Evans SJ, Tomita H, Li JZ, Vawter MP *et al*. Altered cortical glutamatergic and GABAergic signal transmission with glial involvement in depression. *Proc Natl Acad Sci USA* 2005; **102**: 15653–15658.
  - 33 Sequeira A, Mamdani F, Ernst C, Vawter MP, Bunney WE, Lebel V *et al*. Global brain gene expression analysis links glutamatergic and GABAergic alterations to suicide and major depression. *PLoS One* 2009; **4**: e6585.
  - 34 Beasley CL, Pennington K, Behan A, Wait R, Dunn MJ, Cotter D. Proteomic analysis of the anterior cingulate cortex in the major psychiatric disorders: evidence for disease-associated changes. *Proteomics* 2006; **6**: 3414–3425.
  - 35 Miguel-Hidalgo JJ, Waltzer R, Whittom AA, Austin MC, Rajkowska G, Stockmeier CA. Glial and glutamatergic markers in depression, alcoholism, and their comorbidity. *J Affect Disord* 2010; **127**: 230–240.
  - 36 Bernstein HG, Meyer-Lotz G, Dobrowolny H, Bannier J, Steiner J, Walter M *et al*. Reduced density of glutamine synthetase immunoreactive astrocytes in different cortical areas in major depression but not in bipolar I disorder. *Front Cell Neurosci* 2015; **9**: 273.
  - 37 Bielau H, Steiner J, Mawrin C, Trübner K, Brisch R, Meyer-Lotz G *et al*. Dysregulation of GABAergic neurotransmission in mood disorders: a postmortem study. *Ann N Y Acad Sci* 2007; **1096**: 157–169.
  - 38 Smith CC, Bowen DM, Francis PT, Snowden JS, Neary D. Putative amino acid transmitters in lumbar cerebrospinal fluid of patients with histologically verified Alzheimer's dementia. *J Neurol Neurosurg Psychiatry* 1985; **48**: 469–471.
  - 39 Csernansky JG, Bardgett ME, Sheline YI, Morris JC, Olney JW. CSF excitatory amino acids and severity of illness in Alzheimer's disease. *Neurology* 1996; **46**: 1715–1720.
  - 40 Gunnersen D, Haley B. Detection of glutamine synthetase in the cerebrospinal fluid of Alzheimer diseased patients: a potential diagnostic biochemical marker. *Proc Natl Acad Sci USA* 1992; **89**: 11949–11953.
  - 41 Pomara N, Singh R, Deptula D, Chou JCY, Schwartz MB, LeWitt PA. Glutamate and other CSF amino acids in Alzheimer's disease. *Am J Psychiatry* 1992; **149**: 251–254.
  - 42 Tuman H, Shen G, Peter JB, Brück W. Glutamine synthetase in cerebrospinal fluid, serum, and brain: a diagnostic marker for Alzheimer disease? *Arch Neurol* 1999; **56**: 1241–1245.
  - 43 Timmer NM, Herbert MK, Claassen JA, Kuiperij HB, Verbeek MM. Total glutamine synthetase levels in cerebrospinal fluid of Alzheimer's disease patients are unchanged. *Neurobiol Aging* 2015; **36**: 1271–1273.
  - 44 Karolewicz B, Maciag D, O'Dwyer G, Stockmeier CA, Feyissa AM, Rajkowska G. Reduced level of glutamic acid decarboxylase-67 kDa in the prefrontal cortex in major depression. *Int J Neuropsychopharmacol* 2010; **13**: 411–420.
  - 45 Milak MS, Proper CJ, Mulhern ST, Parter AL, Kegeles LS, Ogden RT *et al*. A pilot in vivo proton magnetic resonance spectroscopy study of amino acid neurotransmitter response to ketamine treatment of major depressive disorder. *Mol Psychiatry* 2015. 10.1038/mp.2015.83.
  - 46 Valentine GW, Mason GF, Gomez R, Fasula M, Watzl J, Pittman B *et al*. The antidepressant effect of ketamine is not associated with changes in occipital amino acid neurotransmitter content as measured by [<sup>1</sup>H]-MRS. *Psychiatry Res* 2011; **191**: 122–127.
  - 47 Taylor MJ, Tiangga ER, Mhuircheartaigh RN, Cowen PJ. Lack of effect of ketamine on cortical glutamate and glutamine in healthy volunteers: a proton magnetic resonance spectroscopy study. *J Psychopharmacol* 2012; **26**: 733–737.



This work is licensed under a Creative Commons Attribution 4.0 International License. The images or other third party material in this article are included in the article's Creative Commons license, unless indicated otherwise in the credit line; if the material is not included under the Creative Commons license, users will need to obtain permission from the license holder to reproduce the material. To view a copy of this license, visit <http://creativecommons.org/licenses/by/4.0/>