



LJMU Research Online

Shepherd, H, Barton, GJ, Robinson, MA and Ranganath, L

O 088 - Self-selected gait modifications to reduce the internal knee abduction moment in Alkaptonuria patients.

<http://researchonline.ljmu.ac.uk/id/eprint/9725/>

Article

Citation (please note it is advisable to refer to the publisher's version if you intend to cite from this work)

Shepherd, H, Barton, GJ, Robinson, MA and Ranganath, L (2018) O 088 - Self-selected gait modifications to reduce the internal knee abduction moment in Alkaptonuria patients. *Gait Posture*, 65 (1). pp. 180-181. ISSN 1879-2219

LJMU has developed **LJMU Research Online** for users to access the research output of the University more effectively. Copyright © and Moral Rights for the papers on this site are retained by the individual authors and/or other copyright owners. Users may download and/or print one copy of any article(s) in LJMU Research Online to facilitate their private study or for non-commercial research. You may not engage in further distribution of the material or use it for any profit-making activities or any commercial gain.

The version presented here may differ from the published version or from the version of the record. Please see the repository URL above for details on accessing the published version and note that access may require a subscription.

For more information please contact researchonline@ljmu.ac.uk

<http://researchonline.ljmu.ac.uk/>

Self-selected gait modifications to reduce the internal knee abduction moment in Alkaptonuria patients

Hannah R Shepherd¹, Lakshminarayan R Ranganath², Mark A Robinson¹, Gabor J Barton¹

¹Research Institute for Sport and Exercise Sciences, Liverpool John Moores University, Liverpool L3 3AF.

²National Alkaptonuria Centre, Royal Liverpool University Hospital, Liverpool L7 8XP.

Introduction: Alkaptonuria (AKU) is an ultra-rare inherited autosomal recessive metabolic disorder [1]. A defected copy of the HGD gene results in a melanin-like polymer being produced which binds to all fibrous connective tissues and cartilage leading to joint ochronosis [1]. There appears to be a rapid increase of symptoms ~30 years including ochronosis levels, joint pain [1, 2] and a decline in gait [3]. It is evidenced in Osteoarthritis that joint loading of the knees, particularly the frontal plane contributes to the degeneration of the articular cartilage [4]. Sharing similar pathologies, it is expected that increased joint loading would further accelerate joint disease progression in AKU.

Research Question: How do AKU patients naturally modify their gait with age to reduce the internal knee abduction moment (IKAM)?

Methods: A 3D gait analysis (Vicon Oxford, UK) was conducted on 36 AKU patients (16 – 70 years, 14♀/22♂) who walked at a self-selected speed across a 10m walkway. Patients had reflective markers placed on the lower limbs in accordance with the Helen-Hayes model [4] to allow joint angles, moments and powers to be calculated. A healthy control group of 17 (20-60 years, 10♀/ 7♂) were used, data was collected at a variety of speeds (very slow, slow, normal and fast (0.6-2m/s)) to allow speed-matched comparisons. A 1D independent t-test was performed on the gait data using statistical parametric mapping to compare differences between the three age groups (Young:16-29y, Middle:30-49y and Old:50+y) of AKU patients and their respective speed matched control group (Young to normal (1.30m/s), Middle/Old to slow (0.96m/s)). All SPM analyses were conducted using the open-source SPM1D package (v.M0.4, www.spm1d.org) in Matlab (R2017a, Mathworks Inc., Natick, MA, USA) corrected for nine comparisons (alpha=0.0055).

Results:

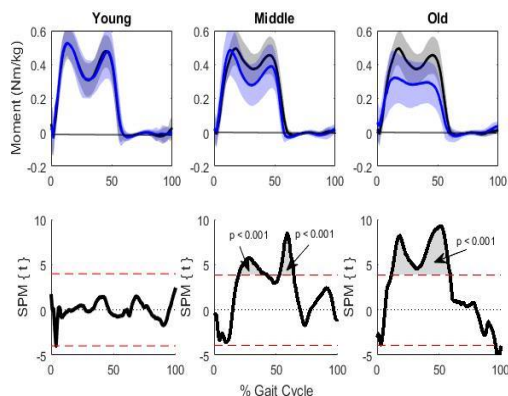


Figure 1: Internal Knee Abduction Moment mean±SD for three age groups (AKU = blue, Control = black). Where the SPM{t} curve crosses the critical threshold (dotted red lines) there was a significant difference between the curves.

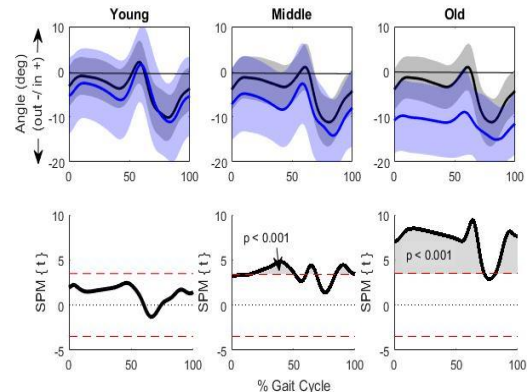


Figure 2: Foot progression angle mean±SD for three age groups (AKU = blue, Control = black). Where the SPM{t} curve crosses the critical threshold (dotted red lines) there was a significant difference between the curves.

The SPM results from the IKAM (figure 1) show a significant decrease with age. The SPM results from the foot progression angle show out-toeing significantly increases with age (figure 2). Hip external rotation is also significantly increased throughout stance in the old group compared to the healthy speed matched control ($p < 0.001$).

Discussion: This study identifies for the first time an age-adaptation mechanism whereby AKU patients naturally modify their gait to reduce the IKAM which is considered as an indirect measure of joint loading [4] and ultimately linked to their joint pain. This is done by out-toeing which mechanically moves the force vector closer to the knee joint centre in the frontal plane reducing the lever arm length, resulting in a reduction of the IKAM. The external hip rotation allows for greater out-toeing seen in the old group. Previous studies focus on the global deviations from normality suggesting that gait deviations are a negative outcome however some deviations could be compensations that are beneficial to reducing joint loading and pain. **References:** [1] Introne & Ghal, (2003). [2] Ranganath & Cox, JIMD (2011) 34:1141-1151. [3] Barton et al., JIMD Rep (2015) 24:39-44. [4] Andriacchi et al., Ann Biomed Eng (2004) 32:447-457. [5] Hunt et al., J Biomech (2006) 39:2213-2220.