

## LJMU Research Online

**Wang, T, Qu, Z, Yang, Z, Nichol, T, Dimitriu, D, Clarke, G and Bowden, D**

**How can the UK road system be adapted to the impacts posed by climate change? By creating a climate adaptation framework**

<http://researchonline.ljmu.ac.uk/id/eprint/10349/>

### Article

**Citation** (please note it is advisable to refer to the publisher's version if you intend to cite from this work)

**Wang, T, Qu, Z, Yang, Z, Nichol, T, Dimitriu, D, Clarke, G and Bowden, D (2019) How can the UK road system be adapted to the impacts posed by climate change? By creating a climate adaptation framework. Transportation Research Part D: Transport and Environment. ISSN 1361-**

LJMU has developed **LJMU Research Online** for users to access the research output of the University more effectively. Copyright © and Moral Rights for the papers on this site are retained by the individual authors and/or other copyright owners. Users may download and/or print one copy of any article(s) in LJMU Research Online to facilitate their private study or for non-commercial research. You may not engage in further distribution of the material or use it for any profit-making activities or any commercial gain.

The version presented here may differ from the published version or from the version of the record. Please see the repository URL above for details on accessing the published version and note that access may require a subscription.

For more information please contact [researchonline@ljmu.ac.uk](mailto:researchonline@ljmu.ac.uk)

# How can the UK Road System be Adapted to the Impacts Posed by Climate Change? By Creating a Climate Adaptation Framework

This paper aims to analyse the impacts of climate change to the current and predicted future situations of road transportation in the UK and evaluate the corresponding adaptation plans to cope with them. A conceptual framework of long-term adaptation planning for climate change in road systems is proposed to ensure the resilience and sustainability of road transport systems under various climate risks such as flooding and increased temperature. To do so, an advanced Fuzzy Bayesian Reasoning (FBR) model is first employed to evaluate the climate risks in the UK road transport networks. This modelling approach can tackle the high uncertainty in risk data and thus facilitate the development of the climate adaptation framework and its application in the UK road sector. To examine the feasibility of this model, a nationwide survey is conducted among the stakeholders to analyse the climate risks, in terms of the timeframe of climate threats, the likelihood of occurrence, the severity of consequences, and infrastructure resilience. From the modelling perspective, this work brings novelty by expanding the risk attribute “the severity of consequence” into three sub-attributes including economic loss, damage to the environment, and injuries and/or loss of life. It advances the-state-of-the-art technique in the current relevant literature from a single to multiple tier climate risk modelling structure. Secondly, an Evidential Reasoning (ER) approach is used to prioritise the best adaptation measure(s) by considering both the risk analysis results from the FBR and the implementation costs simultaneously. The main new contributions of this part lie in the rich raw data collected from the real world to provide useful practical insights for achieving road resilience when facing increasing climate risk challenges. During this process, a qualitative analysis of several national reports regarding the impacts posed by climate change, risk assessment and adaptation measures in the UK road sector is conducted for the relevant

decision data (i.e. risk and cost). It is also supplemented by an in-depth interview with a senior planner from Highways England. The findings provide road planners and decision makers with useful insights on identification and prioritisation of climate threats as well as selection of cost-effective climate adaptation measures to rationalise adaptation planning.

*Keywords:* climate change, adaptation measure, risk analysis, road planning, transportation, Bayesian networks, evidential reasoning.

## **1. Introduction**

Climate change has been a frontier research topic involving diverse disciplines over the past decades. Current variability in climate poses a challenge for road infrastructure and operations. In many countries, road transport systems are sensitive to diverse weather extremes, including but are not limited to, variations in precipitation, temperature, winds, thunderstorms, frost, thaw and fog days, visibility and sea/water level (e.g., Love *et al.*, 2010; Bles *et al.*, 2010; Schweikert *et al.*, 2014).

To adequately address the impacts of climate change on roads, adaptation strategies have been put forward and applied in real cases (e.g. Strauch *et al.*, 2015). Although considerable research on climate adaptation has been undertaken in recent decades, existing studies focusing on climate adaptation of the transport sector are still scanty (e.g. Eisenack *et al.*, 2012). A critical early step in establishing a comprehensive framework is to assess climate risks, including the types and levels, so as to strengthen the resilience and robustness of transport infrastructure and operations to these risks (Meyer *et al.*, 2014).

Current research on climate-related risk analysis has commentators on interpreting and identifying the existing and future threats, estimating the level of risk as well as determining the level of uncertainties (Yang *et al.*, 2015). However, traditional probabilistic risk analysis methods, such as Quantitative Risk Assessment (Nicolet-Monnier & Ghenorghe, 1996; Urciuoli, 2011), are usually unable to deal with the unavailability or incompleteness of climate risk data. In the meantime, when the expressions of risk and costs are inconsistent, it is challenging to combine risk and cost results to make rational decisions (Yang *et al.*, 2015). Some efforts have been put to address these challenges through combining fuzzy logic and Bayesian Networks (BNs) approaches to model subjective input data (Bott & Eisenhower, 2002; Baksh *et al.*, 2018), as well as combining fuzzy set modelling and evidential reasoning (ER) (e.g., Wan *et al.*, 2018a) to realise climate risk and adaptation cost synthesis to minimise information loss (Wang *et al.*, 1996). Furthermore, another research challenge is the uncertain nature of climate change itself, making it difficult to select and develop appropriate risk scenarios in which the analysis of diverse scenarios has been proven to enhance the resilience for unexpected changes (such as in a city (Mikovits *et al.*, 2018)). Hence, a flexible climate adaptation framework is needed for addressing the above challenges and supporting road transport planners to make effective adaptation planning against climate risks in a specific region.

This work, based on the EU future city project (The Future Cities Adaptation Compass, 2012a; 2012b), proposes a conceptual framework for developing long-term climate change adaptation planning in transportation systems. It therefore offers a significant contribution to innovations in climate adaptation methods, in facilitating economic development and investment within the context of transportation planning. To achieve this, a hybrid of Fuzzy Bayesian Reasoning (FBR) and ER approaches is applied, to quantify the risks posed by climate change with the

introduction of new risk parameters to better incorporate raw data for rational results. Furthermore, the developed FBR model is validated by the UK road transport system, through conducting a nationwide survey amongst 19 major road stakeholders. This application reveals the current and predicted future climate risks facing the road sector in the UK. Finally, by combining a review of the literature and national reports as well as an in-depth interview with a relevant road stakeholder, we disclose the existing and potential adaptation planning issues and provide useful recommendations for the UK road system. The outcomes of this paper can help fulfil the research need of road planners, decision-makers and industrial professionals on how to rationally design adaptation plans and implement adaptation measures and practices.

The remainder of this paper is structured as follows. A critical review of the impacts posed by climate change and climate risk analysis on roads is presented in section 2. Section 3 introduces the methodology by elaborating a conceptual framework for developing long-term climate change adaptation planning in transportation systems with a step-by-step description. It includes an FBR model to evaluate the climate risks and adaptation measures in the transportation system and a nationwide survey for collecting first-hand data. A case study on how the British road system can adapt to the impacts of climate change is presented by following the above steps along with the supporting FRB and ER methods in Section 4. Finally, the discussion and research implications are presented in Section 5. The paper is concluded in Section 6 with suggestions for further research.

## **2. Critical Review**

Prior literature concerning the impacts on roads, posed by climate change, has developed both on a national or multi-regional level. In developed countries, such as the USA and the UK, a considerable number of studies have been carried out to investigate or assess the impacts of

climate change on road sectors (e.g. Regmi & Hanaoka, 2011; Harvey *et al.*, 2004; Galbraith *et al.*, 2005; National Research Council of the National Academies (NRCNA), 2008; ICF International, 2008). These studies were not limited to the assessment and prediction of the impacts of climate change, but also the costs of mitigation and adaptation when corresponding measures are involved. However, most studies on climate change focused on short-term impacts. Furthermore, there are only few studies in the relevant literature dealing with road adaptation to climate change in developing countries (e.g. Koetse & Rietveld, 2009). Considering the complexity and diversity of climate change in different regions, it is necessary to undertake country-specific assessments and quantifications for climate change impacts and climate adaptation strategies to improve the resilience of a transport system. Meanwhile, proactive policy planning with an in-depth understanding of the projected climate change impacts on the built environment was suggested to avoid high costs in the future (Chinowsky *et al.*, 2015).

The majority of current studies related to climate change adaptation primarily focused on physical infrastructures, such as bridges, pavements and drainage systems (TRB, 2008; De Bruin *et al.*, 2009). Concerning climate adaptation of road infrastructure, Strauch *et al.* (2015) identified that the temperature changes in hydrological regimes increased flooding in autumn and reduced snowpack in spring, and higher soil moisture in winter led to the reduction of slope stability in Washington State, USA. Adaptation strategies were proposed to upgrade, change or maintain stream crossing and drainage design, revise funding policies, relocate or close roads and increase public participants. A methodological framework for developing adaptation strategies was developed through exemplifying the management of rural roads in Thailand, where the vast road network was vulnerable to the impacts of flooding and sea level rise (SLR) (Rattanachot *et al.*, 2015). De Bruin *et al.* (2009) put forward relatively holistic adaptation

options for the Netherlands based on literature review and expert opinions. Overall, the most crucial adaptation strategies are, but not limited to, designing new vast infrastructure, improving the capacity of locks and weirs, developing more 'intelligent' infrastructure and water management systems. Some other specific adaptation measures include increasing the height of bridges and elevating road infrastructure in the case of water level rise, *etc.* (e.g., Demirel, 2011).

Despite all these pioneering attempts, the existing research on adapting transport to climate change is still scanty (i.e., Eisenack *et al.*, 2012). Eisenack *et al.* (2012) and Koetse & Rietveld (2012) systematically reviewed the literature on climate adaptation strategies in the transport sector. Although the sector has realised its social and economic vulnerability to climate change, up to now, adaptation to climate change in transportation has received insufficient attention, especially on specific adaptation measures. Most studies tended to focus on a medium-size set of case studies rather than systematic strategies, and meanwhile, the context of the existing adaptation literature was either overly general, conceptual adaptations or site-specific technical measures (Eisenack *et al.*, 2012; Koetse & Rietveld, 2012). Only a few countries have implemented specific adaptation strategies at a national level, such as the UK (DEFRA, 2006; Committee on Climate Change, 2014; 2017), the USA (EPA, 2009; 2014), the Netherlands (KFC, 2014; NAS, 2016) and Finland (Marttila *et al.*, 2005; Ministry of Agriculture and Forestry, 2014). Through reviewing over 200 adaptations measures from 30 papers in 23 peer-reviewed journals from 2005 to 2009, Eisenack *et al.* (2012) found that the research was relatively scattered, lacking dominant journals, researchers and theories, and much knowledge on climate adaptation was not clarified in the peer-reviewed arena. The most institutional adaptations which could help planners make decisions were usually found in the grey literature.

To adapt to the impacts posed by climate change, a critical early step is to determine the types and levels of climate risks (Meyer *et al.*, 2014). Many traditional risk assessment approaches have been extensively applied to perform risk assessment in different sectors. Nevertheless, in assessing the threat of landslides, for example, a limited number of studies have been undertaken to investigate the cost of damage or quantitatively analysed the effects of adaptation, which are probably because of the difficulties of collecting reliable data and of evaluating the effect of adaptation using an objective approach (Kim *et al.*, 2018). Owing to the inadequacy of historical or statistical data on climate risks assessment, the high-level uncertainties in data (UNCTAD, 2012) make traditional probabilistic risk analysis methods, such as Quantitative Risk Assessment (Nicolet-Monnier & Ghenorghe, 1996; Urciuoli, 2011) unsuited for climate adaptation study at this stage (Yang *et al.*, 2018).

In recent years, fuzzy set and Bayesian Networks (BNs) methods have been applied to climate risk assessment on ports in several pioneering studies by a group of scholars. For instance, they exerted a ‘discrete fuzzy set approach’ and a ‘fuzzy set manipulation’ to accommodate subjective data in climate risk analysis (Ng *et al.*, 2013; Yang *et al.*, 2015; 2016; 2018). Through modelling subjective linguistic variables extracting from the stakeholders’ opinions, climate risks were evaluated and projected based on their occurrence frequencies, the severity of consequences and timeframes of climate risks. In spite of showing much initial promise, these studies have yet attracted concerns from practice, including the difficulty of accurately evaluating the severity of consequence, and a lack of empirical evidence on the feasibility of the Fuzzy Bayesian modelling in adopting it from seaports to another transport context. More specifically, in previous studies (e.g., Yang *et al.*, 2018), risk variables were defined in a high level at which experts in some cases felt insufficiently confident to carry out their evaluations. For instance, the consequences of climate change on many occasions need to be further



interpreted from three perspectives including economic loss, human injuries/deaths, and environmental damage. Having them separately presented to model climate risk consequences will facilitate the use of raw data/subject judgements from experts and thus, provide a more rational and better climate risk evaluation mechanism. With reference to risk parameters, previous studies have mainly investigated the impacts of risky external events to infrastructure (e.g., the likelihood and severity of consequence) but not yet taken into account the resilience of the infrastructure itself. In the context of the transportation system, resilience was defined as the ability of the system to “absorb disturbances, maintain its basic structure and function, and recover to a required level of service within an acceptable time and costs after being affected by disruptions” (Wan et al., 2018). Meanwhile, Wan *et al.* (2018b) also emphasised the necessity of incorporating the diverse characterises of transportation resilience into a new evaluation framework, together with advanced quantitative modelling methods to deal with uncertainties in resilience assessment. Hence, in this study, a new risk parameter namely “climate resilience” has been added to address this need. It can be interpreted as the capacity of the transportation system to anticipate, absorb, accommodate, or recover from the effects of a climate event in a required period and cost of recovery (IPCC, 2012a).

Some recent articles have taken transport resilience into climate-related research. Beheshtian *et al.* (2018), for example, proposed a stochastic optimisation model for strengthening the long-term resilience of the motor fuel supply chain (MFSC) in response to the impacts of SLR and flooding in Manhattan, New York. The modelling results emphasised the importance of immediate risk management as well as investments of the vulnerable infrastructure at both early and late stages of the planning, retrofitting, and reconstruction for developing a successful climate adaptation framework. Nevertheless, it noted that previous Fuzzy Bayesian modelling studies have only been applied in the port area, while a systematic climate adaptation

framework for the road system has not been created. Therefore, more empirical evidence is required in order to prove the model's feasibility in road transportation adaptation to climate change and enhance its generalisation.

One of the dilemmas remains is that the uncertain nature of climate change itself challenges the estimation and selection of risk (low-risk, medium-risk or high-risk) scenarios in the future. This issue can be addressed by collecting real survey data from transport experts to calibrate and assign the weights of the defined risk parameters so that the proposed model can be tailored and applied in different circumstances (Wu *et al.*, 2013). This enlightens transport planners to consider diverse climate threats, and make a customised risk assessment and longer-term transport planning based on ongoing climate trend observations in a specific region. To do so, it needs the input from continuous data collection and innovation of advanced models based on local conditions (Walker *et al.*, 2011). Accordingly, a comprehensive climate risk analysis and adaptation framework is proposed below in response to the impacts of climate change.

### **3. Methodology**

#### **3.1 A conceptual framework of long-term adaptation planning for climate change**

This new climate adaptation planning framework aims to systematically evaluate the climate risks on roads and select the cost-effective adaptation options in a situation where objective risk and cost data are incomplete or unavailable. It can be realised by utilising both quantitative and qualitative methods, for instance, an extended FBR model, practical surveys, and in-depth interview involving relevant road stakeholder. This section describes a four-step climate adaptation framework tailored from the EU future city project (The Future Cities Adaptation Compass, 2012a; 2012b), with novel supporting models in risk estimate and cost benefit

analysis. It is followed by a real case to demonstrate how this framework is applied to climate risk assessment and adaptation planning in the British road sector in Section 4.

The Future Cities Adaptation Compass (2012a; 2012b) is an instruction tool for developing climate-proof city regions. Most of the sectors in a city (e.g., health, transportation, disaster and water management) confront the impacts posed by climate change. On the basis of this compass, this paper briefly describes a conceptual integrated climate adaptation framework specialised in the transportation systems, in which new subjective risk estimate and cost analysis models are proposed. It includes the following four steps:

*Step 1: Identify climate risks on transportation systems.*

*Step 2: Evaluate the risks posed by climate change on transportation systems.*

*Step 3: Explore adaptation measures for transportation systems.*

*Step 4: Prioritise adaptation measures for transportation systems.*

The above four steps are explained in the case study in Section 4. In Section 4.1, we identify climate risks on the UK roads referring to the UK Climate Projections (UKCP09) (Jenkins *et al.*, 2009), the Highways England's latest report (2016) and other academic studies (i.e., Jaroszweski *et al.*, 2010; Hooper & Chapman, 2012). These risks (and also adaptation options) are summarised in the questionnaire by a pilot study through interviewing domain experts. In Section 4.2, a national survey is carried out to collect data to evaluate climate risks confronting the UK road system using an advanced climate risk estimate approach described in Section 3.2. Section 4.3, addressing the above steps 3 and 4, describes the adaptation measures with respects to the high risks evaluated in Section 4.2. The reason for having the real data and case integrated with the methodology is twofold. One is the first two steps represent a standing alone technique for evaluating climate risks facing transport infrastructure. The other is the result of the case

analysis in Section 4.2 can aid to explain the exploration and prioritisation of adaptation measures in Section 4.3 to provide useful insights in practice.

### **3.2 Evaluate the risks posed by climate change on transportation systems - a developed FBR risk analysis framework**

In this section, the FBR risk analysis model for port adaptation to climate change (Yang *et al.*, 2018) has been tailored to apply in the road sector, with new risk parameters and risk inference hierarchical structure. The following step-by-step description therefore mainly focuses on the new developments with new primary empirical information appropriately presented<sup>1</sup>.

#### 1) Identify Environmental Drivers

Based on the previous literature review (i.e., Jenkins *et al.*, 2009; Jaroszweski *et al.*, 2010; Hooper & Chapman, 2012), we summarise four primary environmental drivers affecting British roads due to climate change: 1) temperature increase, 2) intense rainfall /flooding, 3) more intense and/or frequent high winds and/or storms, and 4) SLR. Hence, this risk analysis is made with respect to each of these environmental drivers, to evaluate the risk level of their corresponding potential climate threats.

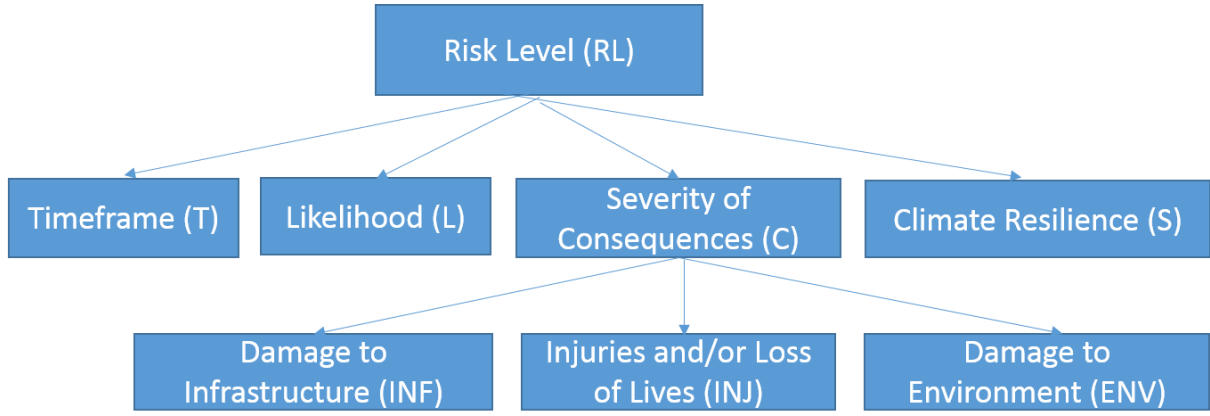
#### 2) Identify Climate Risk Variables

The assessment of climate change risks on the road system may contain a variety of uncertainty and insufficient or incomplete historical data (UNCTAD, 2012). Hence, a fuzzy set method through modelling subjective linguistic variables can help tackle these issues (Yang *et al.*, 2018).

---

<sup>1</sup> It leaves the unnecessary repetitions in terms of modelling work (including equations and algorithms) to be explained in Yang *et al.* (2018).

First, eight climate risk parameters are newly identified and presented in a hierarchy structure of three levels respectively. On the first level is the top parameter called “Risk Level (RL)”. It can be described by linguistic terms such as “*Very High*”, “*High*”, “*Medium*”, “*Low*” and “*Very Low*” (e.g. Ng *et al.*, 2013; Yang *et al.*, 2015; 2016). On the second level, there are four parameters associated with climate risk evaluations. The linguistic terms used to describe the first three parameters “*Timeframe (T)*”, “*Likelihood (L)*” and “*Severity of Consequences (C)*” in this level are consistent with those used in previous studies on port adaptation to climate change (e.g. Yang *et al.*, 2008; 2009; Ng *et al.*, 2013; Yang *et al.*, 2016). All of the definitions of above parameters, sub-parameters as well as the descriptions of their linguistic terms are carefully examined by domain experts with reference to previous works in subjective risk modelling (Wang *et al.*, 2018a, 2018b), and presented in Appendix A. For example, “*Timeframe*” means ‘when does an expert expect first to see this climate change impact’. Hence, the sooner he/she expect to see this impact, the higher risk level will be. Timeframe has been widely used to describe climate risks in previous studies (e.g. Yang *et al.*, 2008; 2009; Ng *et al.*, 2013; Yang *et al.*, 2016). It has also been validated in the pilot study by the domain expert in the road transport sector. To reflect new climate adaptation studies, we add a new parameter “*Climate Resilience (S)*” in this study (IPCC, 2012), which is described as “*Very Weak*”, “*Weak*”, “*Average*”, “*Strong*” and “*Very Strong*”. Because the traditional risk consequences are categorised into three groups including loss of life or injury, economic and environmental impacts and infrastructure damage (e.g., UNISDR, 2017), the “*Severity of Consequences (C)*” is divided into three sub-parameters: “*Damage to Infrastructure (INF)*”, “*Injuries and/or Loss of Lives (INJ)*”, and “*Damage to Environment (ENV)*”. Figure 1 shows the three-tier structure of climate risk parameters.



**Figure 1. Three-tier structure of climate risk parameters**

Under fuzzy logic theory, the existing situational elements in risk analysis are each allocated a value or degree to which it belongs to a linguistic term - used to describe the risk parameters. We select triangular and trapezoidal membership functions in this paper given they are simple/accessible to a wide audience, and commonly used in risk analysis (i.e., Dyck *et al.*, 2014). These functions based on the literature (e.g. Yang *et al.*, 2018) and domain experts' verification are expressed by five sets of overlapping triangular or trapezoidal curves, which are shown in Appendix A.

### 3) Model the relation between low level and high level variables using fuzzy rule bases

IF-THEN rules collected from expert's knowledge are combined into a single system, by which the fuzzy system theory offers an efficient transformation from knowledge bases to non-linear mappings (Sii & Wang, 2002; Yang *et al.*, 2010). To model the incomplete data from expert judgements, subjective degrees of belief (DoBs) are utilised and assigned to the linguistic terms to represent the uncertainty in data. For instance, a rule with DoB, describing the first and second level risk parameters, can be developed as follows:

- *If T is Very Short (VS), L is Very High (VH), C is Catastrophic (CA) and S is Average (A), then RL is Very High with a 75% DoB, Medium with a 25% DoB, Low with a 0% DoB and Very Low with a 0% DoB.*

The rationalisation of the DoB distribution of these rules is achieved by a proportion method (Alyani *et al.*, 2014). Consequently, four second-level fuzzy input parameters including 20  $(5+5+5+5)$  linguistic variables are assembled to generate 625  $(5 \times 5 \times 5 \times 5)$  antecedents with appropriate DoB distribution to the conclusions (i.e. the THEN part). Simultaneously, we construct a third-level network between the three parameters (INF, INJ and ENV) and the second-level parameter C, containing 15  $(5+5+5)$  linguistic variables assembling to create 125  $(5 \times 5 \times 5)$  antecedents, as shown in Appendix B.

#### 4) Prioritise risk levels by a BN technique

The employment of multiple sets of data makes it hard to use normal fuzzy rule inference mechanisms as the calculation causes loss of information and takes a long time. BN, as a sound mathematical method in minimising uncertainties and increasing knowledge, is able to integrate probability distributions or functions of various parameters and update their probabilities if new information emerges (Wang, 2003). It has been widely used in risk diagnosis and prediction in various areas, such as quantitative prediction and assessment of coastline change due to SLR (Gutierrez *et al.*, 2011) and water-related health issues triggered by extreme weather events (Bertone *et al.*, 2015). In this paper, we utilise BN to facilitate the synthesis of fuzzy rules and to evaluate climate risks in a semi-automation manner.

Taking the rule base of the first and second level as an example, we convert the constructed structure into a five-node converging connection, where the rule base is expressed by conditional probabilities. This connection contains four parent nodes,  $N_T$ ,  $N_L$ ,  $N_C$  and  $N_S$  (Nodes  $T$ ,  $L$ ,  $C$ , and  $S$ ) and one child node  $N_{RL}$  (Node  $RL$ ).

In the questionnaire survey, we ask participants to estimate the impacts of climate change on their road networks regarding “*Timeframe*”, “*Likelihood*”, “*Severity of Consequence*” and “*Climate Resilience*” with reference to their individual linguistic terms, so as to obtain the prior probabilities of all four nodes. The prior probabilities of  $N_L$ ,  $p(L)$ , for example, can be obtained by asking the question, “how likely the effect will occur when you expect first to see this climate threat poses impacts on the road that your organisation is associated with?”. We then averaged all the data received from different experts. For the multiple data from one group, we first average the data within the group to minimise the input of obvious subjective bias.

Finally, the marginal probability of risk level  $N_{RL}$  can be computed based on the given prior probabilities (Jensen, 2001). After the allocation of utility values to the linguistic terms (i.e. risk levels) of  $N_{RL}$ , the final climate risk ranking value by multiplying the obtained marginal probabilities and the associated utility value of the risk levels. The lower the climate risk ranking value, the higher the risk level is.<sup>2</sup>

### **3.3 A nationwide survey for assessing climate risks and exploring adaptation options**

To test the feasibility of the extended FBR model, a large-scale survey was conducted to collect primary data through examining the perceptions of road stakeholders on the impacts of climate change, and effects of adaptation for climate change. This survey aims to illustrate the general situation of climate risks in the UK road system and further justify the necessity of adaptation planning. It included the evaluation of overall impacts and specific threats on the operations, performance, and infrastructure of British roads. The questions were categorised into two types:

---

<sup>2</sup> The risk result from the fuzzy Bayesian model was presented by grade assessment with belief degrees. To obtain a crisp value to prioritise the climate threats, we assigned each assessment grade a utility value and then calculated the final risk score by the addition of multiplying the belief degree associated with a specific grade and the grade’s utility value.



closed-ended and open-ended. In particular, participants were asked to describe the risk level of each specific risk threat with and without adaptation measures by the linguistic terms concerning its timeframe, severity of consequence, likelihood and climate resilience. In addition, we required the information of financial costs of each adaptation measure for further cost-effectiveness assessment. To guarantee the validity of this questionnaire, a pilot study was undertaken in April 2017 by speaking with eight professional road experts and academics in the UK. The 12 potential climate threats on the road and their corresponding adaptation measures were then finalised (see Table 1 and Table 3) by combining the literature review (i.e., UNECE, 2012; Regmi & Hanaoka, 2011) and the results from the domain experts' survey.

From May to December 2017, we assessed the perception of 19 road experts on climate change risks through a nationwide online survey. The survey participants widely ranged from CEOs/transport directors, transport planners, transport engineers, environmental managers, private operators, transport authorities, highway agencies and NGOs to road academics. A summary listed the background information of domain experts can be found in Appendix C. Transport entities in charge of the “M” (i.e. motorway) and “A” class roads in the UK were targeted as primary participants in this survey.

Given the uniqueness and complexity of climate change issues (i.e., the characteristics, geographic distribution, scales and types of climate risks on roads), non-probability sampling, including a combination method of judgment and snowball sampling, was utilised (Wang, 2015). Some small entities in remote regions were excluded as they might lack necessary knowledge or experience of climate change issues, and meanwhile, the representativeness of the samples is more critical than its generalisability in judgment sampling (Vogt & Gardner,

2012). Combining the above factors, there were two criteria for the survey sampling: 1) members of The UK Roads Liaison Group (UKRLG); 2) Other main road entities that can provide the geographical balance of each region in the UK. Consequently, a sample of 30 administrators representing the essential transport institutions of different regions in the UK (e.g., Highways England, Transport for Greater Manchester, AECOM UK, *etc.*) was selected to assess their perceptions of climate change risks. Afterwards, we invited one or two critical informants at each entity from the targeted population to help distribute our questionnaire by a snowballing method.

We distributed the 30 questionnaires through BOS Online Survey (BOS, 2017). E-mails and phone calls were used to contact all the respondents. In the end, 19 out of 30 valid responses were received with a high response rate of 63.3%.

### **3.4. Use of ER for cost-effectiveness analysis of adaptation measures**

Finally, the ER approach is used to evaluate the cost-effectiveness of the explored adaptation measures against the climate threats of high risks at the last step of this methodology. For instance, risk reduction with adaptations cost of the  $n^{th}$  adaptation measure for tackling the  $m^{th}$  climate threat can be synthesised to obtain the cost-effectiveness of the  $n^{th}$  adaptation measure against the threat.

The whole process of ER calculations to obtain the final results of the combined DoB  $\beta^j$  ( $j=1, 2, 3, 4, 5$ ) can refer to the latest algorithm pathway<sup>3</sup>.

---

<sup>3</sup> The detailed algorithm has been explained in previous studies (e.g., Yang *et al.*, 2018)

Furthermore, utilising centroid defuzzification method (Mizumoto, 1995; Yang *et al.*, 2009), the linguistic description can then be converted into crisp values {0.11, 0.3, 0.5, 0.7, 0.89} (Yang *et al.*, 2018) so as to obtain a numerical cost-effectiveness index (*CEI*) of each adaptation measure.

#### **4. Case study: risks analysis and climate change adaptation framework on the UK road system**

##### **4.1 Identify climate risks on the UK road system**

Based on the UK Climate Projections (UKCP09) (Jenkins *et al.*, 2009), the Highways England's latest report (2016) and other academic studies (i.e., Jaroszweski *et al.*, 2010; Hooper & Chapman, 2012), we firstly identify the predicted climate change trends and impacts on the British road transport. These include the effects of an increased number of hotter and drier days in summer and warmer and wetter days in winter, increased heavy precipitation and extreme weather events, drought, sea level change, seasonal change, high winds, and reduced number of fog days and cloud cover. For example, higher temperatures in summer can cause road damage; more intense precipitation in winter might result in flooding, landslips, and bridge scour. An interviewee from Highways England also added a few main impacts on its road network. He suggested that the changing precipitation (groundwater level/flooding/storm surges) might lead to pollution and asset deterioration, and affect the design and management of existing foundations, drainage and skid resistance. Increase in extreme temperature could alter the layout of bearings and expansion joints. High winds may have minor effects on structure and gantries but major risks of disruption of construction work.

During this process, all the four critical climate threats (i.e., temperature increase, intense rainfall /flooding, more intense and/or frequent high winds and/or storms, and SLR) as well as their corresponding adaptation measures are identified and examined by eight road experts via a preliminary study, and finally listed in the questionnaire survey for further evaluation.

Historically, strong winds are considered to be the most dangerous weather type for the UK roadways (Perry, 1990; Edwards, 1994). The UK is one of the windiest countries located in the mid-latitude westerlies. A destructive wind event 'Windy Thursday', occurred on 18 January 2007 fiercely swept over major regions of England, Scotland and Wales (Eden, 2007). This event resulted in the overturning of approximately 50 goods vehicles and £50 million losses of delay across the nation (Highways Agency, 2007). The following significant wind storms over this period resulted in 111 accidents and lengthy recovery time after the disruption (Eden, 2007). Additionally, high winds, due to the occurrence of the latest Storm Ali in September 2018, led to power cuts, vehicle damages and fallen trees which further caused traffic disruptions in Cumbria, including the closure of partial sections of M6 and the Tay Road Bridge (BBC news, 2018).

With the sea level rises, 5% of the UK major road network was expected to suffer from 'significant' annual change of coastal flooding (Edwards, 2017). Flooding also presented significant impact on climate change on the UK transport networks and around 10% of the UK major road networks was built in floodplains, and 7% had a 'significant to moderate' chance of annual flooding (EPA, 2009). This can be witnessed from the cumulative effect of the rapid succession of 12 significant storms from December 2013 to February 2014 in the UK since the 1950s (Met Office, 2014; Devon Maritime Forum, 2014). They contributed to the collapse of 80 sections of the sea wall at Dawlish on the South Devon coast, backlog in carriageways,

increased number of potholes, severe road deterioration and thousands of fallen trees and branches on the roads, as well as multi-sectional road closures (e.g., A30, A38, A30 and A303) (Devon County Council, 2014).

The most catastrophic floods occurred in Cumbria UK 2015, partly as a result of Storm Desmond occurred on the 5th and 6th December, which broke 2009's precipitation record with 341.4 mm rainfalls (Met Office, 2015). Roads were shut in the severely affected areas, and over 100 bridges were damaged or destroyed. The A595 was closed from the Castle Roundabout at Cockermouth to the Thursby roundabout near Carlisle (BBC News, 2015). With the flooding of A595, the main road was damaged and requires to be rebuilt. The broken traffic lights also caused temporary delays in the both ways of A590 at Lindal (The Mail, 2015).

Overall, although some recent studies have begun to cope with climate impacts (i.e., Peterson *et al.*, 2008; Koetse & Rievelde, 2009), the existing research on climate impact on road freight in the UK has remained relatively unexplored (Jaroszweski, 2015). The lack of precise data on the current and potential impacts of climate change, as well as cost-benefit analysis, poses a significant challenge for transportation planners, which could potentially cause the failure of adaptation strategies in the transport sector (i.e., Koetse & Rietveld, 2012). Hence, we propose an extended climate risk analysis framework by utilising the FBR approach and collecting primary data through a nationwide survey to reveal the real climate risks in British roads.

The UK highway industry began developing a holistic asset management plan for climate change in 2010 (Munslow, 2011). 'Climate Change Adaptation Framework' (Highways Agency, 2009) and the recently published 'Climate Adaptation Risk Assessment Progress Update' (Highways England, 2016) described the existing climate risk assessment approaches and

adaptation procedures. The current climate risk appraisal considers *the rate of climate change, the extent of disruption, the severity of disruption and uncertainties*<sup>4</sup>, based on the methodology used in the project of ‘Risk Management for Roads in a Changing Climate (RIMARPCC)’ (Conference of European Programme of Roads, 2010). Nevertheless, this method becomes arguable when not taking other critical factors influencing climate impact into account, such as the costs, time and capacity of a transport system to recover from the risks of a climate change event. Furthermore, the forthcoming UKCP18 projections may change the level of climate risks, which requires reviewing the existing action plans and discussing the derived products and budgets, instead of merely prioritising risks by formula. Department for Environment, Food & Rural Affairs (DEFRA) has been looking at a more standardised approach for climate risk assessment. Hence, it is vital to fill the gaps in analysing the cost-effectiveness of adaptation measures and constructing adaption plans for climate change in the UK road network.

#### 4.2 Evaluate climate risks for the UK road system by using FBR model

First of all, the climate risks of each potential climate threat of environmental driver related to UK roads with no adaptation measures being implemented are calculated by the above fuzzy Bayesian approach and the results are elaborated in Table 1. The evaluations of each threat are depended upon the four aforementioned risk parameters: “*Timeframe (T)*”, “*Likelihood (L)*”, “*Severity of Consequence (C)*” and “*Climate Resilience (S)*”.

**Table 1. Questionnaire results of climate risk analysis on UK roads**

Environmental driver due to climate change	Potential climate threat on the road	Risk ranking value	Ranking of risk level
--	--------------------------------------	--------------------	-----------------------

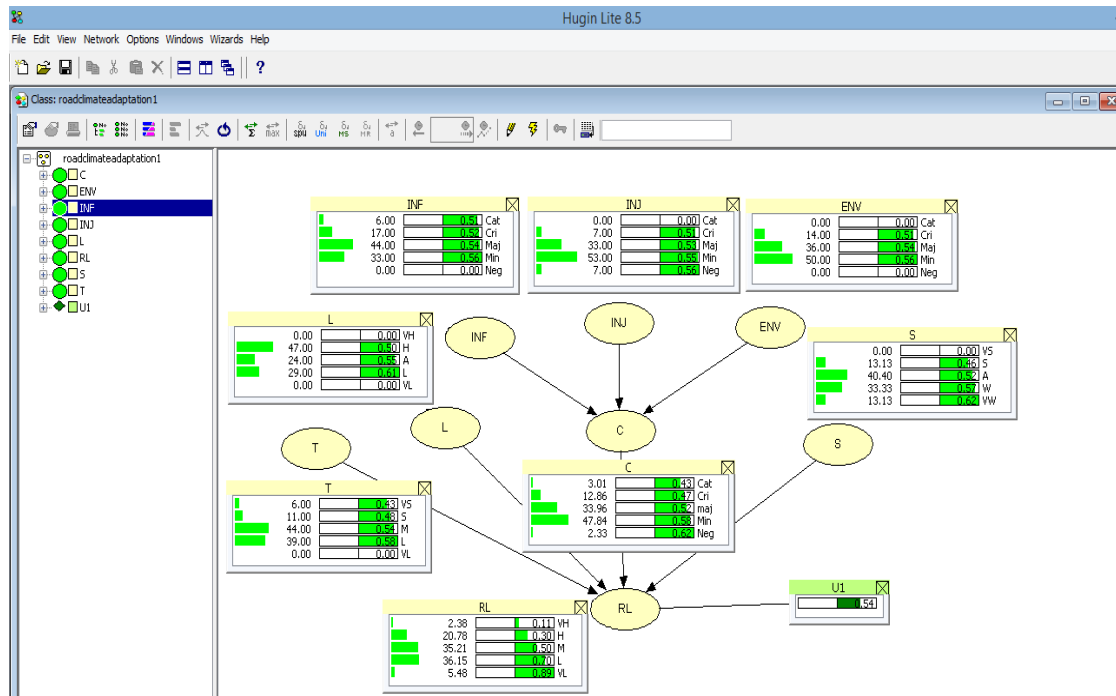
<sup>4</sup> For instance, when prioritisation criteria is highly disruptive, time-critical with high confidence, “Indicator score = [Rate of climate change] x [Extent of disruption] x [Severity of disruption] x (4 - [Uncertainty]) divided by 81” (Conference of European Programme of Roads, 2010)

Temperature increase	A1. Increased intensity of warm weather leads to pavement deterioration, including softening, traffic-related rutting, cracking, migration of liquid asphalt	<b>0.54</b>	<b>9</b>
	A2. Heating and thermal expansion of bridges, buckling of joints of steel structure and paved surfaces	<b>0.51</b>	<b>8</b>
	A3. Traffic jams/alternative routing /accidents, increasing fuel consumption and CO <sub>2</sub> emissions, delivery delays and consequential costs	<b>0.40</b>	<b>1</b>
Intense rainfall/flooding	B1. The road drainage cannot effectively remove water due to heavy rains, which results in poor or dangerous driving conditions	<b>0.43</b>	<b>2</b>
	B2. Rainfall events can cause rivers/watercourses to flood which damages bridges, culverts waterways and clearance, and scouring can ruin the foundation of bridges and culverts	<b>0.44</b>	<b>3</b>
	B3. Rainfall events result in landslides and mudslides in hilling roads, and cause roadblocks	<b>0.47</b>	<b>4</b>
	B4. The road may be inundated by flooding caused by adjacent drainage systems (rivers/public sewers) flooding which renders the road unusable	<b>0.48</b>	<b>5</b>
More intense and/or frequent high wind and/or storms	C1. Storm cyclone due to heavy rainfall and high wind can trigger flooding, inundation of embankments, affect road transport and stability of bridge decks	<b>0.50</b>	<b>7</b>
	C2. Disrupt traffic safety and emergency evacuation operations, damage to lighting fixtures and supports, traffic boards and information sign	<b>0.51</b>	<b>8</b>
	C3. High wind and storms can increase traffic accidents and affect road safety	<b>0.48</b>	<b>5</b>
SLR	D1. SLR can trigger inundation of coastal roads, extra demands on infrastructure when used as emergency/evacuation roads, and realign or abandon roads in threatened areas	<b>0.49</b>	<b>6</b>
	D2. SLR can deteriorate road base and bridge supports, cause bridge scour and pollution under bridges	<b>0.50</b>	<b>7</b>

*Sources: CEDR (2012); IPCC (2012b); Regmi & Hanaoka (2011); The Royal Academy of Engineering (2011); UNECE (2012).*

Utilising FBR and its associated Hugin software (HUGIN v. 8.5, 2017; Andersen *et al.*, 1990), the risk results of “A1. Extended warm weather can cause pavement deterioration, including softening, traffic-related rutting, cracking, migration of liquid asphalt”, for example, can be

calculated as {2.38% Very high, 20.78% High, 35.21% Average, 36.15% Low, 5.48% Very low}. After assigning the utility values to the five linguistic terms, A1's risk index value is calculated as 0.54. The result of risk analysis on A1 by Hugin is found in Figure 2.



**Figure 2. Climate risk analysis of “A1. Extended warm weather can cause pavement deterioration, including softening, traffic-related rutting, cracking, migration of liquid asphalt” using Hugin**

Based on the ranking results in Table 1, the highest climate risks to the roads in Britain are “A3”, “B1” and “B2”, which refers to “A3. Traffic jams/alternative routing /accidents, increasing fuel consumption and CO<sub>2</sub> emissions, delivery delays and consequential costs owing to increased temperature”, “B1. The road drainage cannot effectively remove water due to heavy rains, which results in poor or dangerous driving conditions”, and “B2. Rainfall events can cause rivers/watercourses to flood which damages bridges, culverts waterways and clearance, and scouring can ruin the foundation of bridges and culverts”, respectively. The threat of the lowest risk level is “(A1) Extended warm weather can cause pavement deterioration, including softening, traffic-related rutting, cracking, migration of liquid asphalt because of increased temperature”. This is probably due to the fact that the influence of



increased temperature on road pavement is a long process where substantial economic losses may not be visualised in a short time.

To figure out the different opinions from diverse groups regarding climate risks on roads, this survey investigates the participants' positions and types of their companies or organisations. After that, these data are analysed against three different criteria: 1) Engineers (including transport engineers, bridge design leads and freight and logistics technologists); CEOs (including CEO/ transport directors, development/strategy directors, traffic & local road associate directors and policy makers); managers (including transport planners, environmental managers, heads of highways, waste & property, and advanced solution managers), as well as an academic staff (a road research fellow) by their positions; 2) consulting companies, NGOs, transport companies and academia, by the type of their entities; 3) large, middle and small companies or organisations by the scale of their entities. Utilising the above FBR method, the results of risk levels, including the utility value and ranking of each potential climate threat are calculated (Appendix D).

With regards to the participants' position (Table D1), the climate threat "A3. Traffic jams/alternative routing/accidents, increasing fuel consumption and CO<sub>2</sub> emissions, delivery delays and consequential costs" posed by "temperature increase" is the top concern given that three out the four groups of stakeholders evaluate it with the lowest utility values as academics (0.37), managers (0.4) and engineers (0.4). It indicates that they (i.e. academia, managers and engineers) expect sooner, stronger, more likely and weaker resilient climate risks on their associated roads compared to the group of CEOs (0.41) regarding "A3". This is possibly because engineers and managers tend to involve in the day-to-day road operations and evidence the damages to the road infrastructure that they use or are in charge of due to climate change. In particular, compared with other groups, academics hold the highest risk views on the impacts

of temperature increase (i.e., “A3”) but also the lowest ones on the intense rainfall/flooding, and more intense and/or frequent high winds and/or storms (i.e., “B3”, “B4” and “C2”). This indicates that the academic’s climate risk perception is quite different with industrialists, triggering new research to better understand the driver behind the difference. It, therefore, raises the research urgency in the field where industrial concerns/needs are higher than academic expectations and possible reactions.

In terms of the type of participants’ entity (Table D2), NGOs, academia and consulting companies expect the highest-level climate risks regarding “A3”, as well as “B1. The road drainage cannot effectively remove water due to heavy rains, which results in poor or dangerous driving conditions” owing to “intense rainfall/flooding”. NGOs and consulting companies have lots of engagements with a variety of projects and stakeholders in the road network; they have a higher chance to provide comprehensive views on climate impact on roads. Similarly, the analysis results show that academia has the lowest risk-level evaluation on “B3”, “B4” and “C2”. Again, it reveals variations in understanding the risks posed by climate change between academics and practitioners.

Finally, concerning the scale of participants’ entity (Table D3), we divide them into three categories: large (more than 50,000 employees), middle (1,000-50,000 employees) and small (less than 1,000 employees) entities. Large and middle entities estimate a highest-level risk scenario for “A3” owing to “temperature increase”. By contrast, small and middle entities consider the lowest risks posed by more intense and/or frequent high wind and/or storms and SLR (A1, B4 and C2). It could be because the larger-scale companies/organisations are more likely to be exposed to the impacts of climate change as their operations usually involve larger or more complicated road networks, thus having more concerns on this topic.

By averaging the utility values of each category and corresponding group, the overall ranking of risk levels of the investigated climate threats can be found in Table 2. It is notable that managers from large NGOs hold the highest risk-level views. Meanwhile, according to the above categorisation analyses, the climate threat “A3” is always the top concern. Thereafter, “B4” and C2” receive the least attention from both academics and middle companies/organisations (i.e. “B4. The road may be inundated by flooding caused by adjacent drainage systems (rivers/public sewers) flooding which renders the road unusable” due to “intense rainfall/flooding” and “C2. Disrupt traffic safety and emergency evacuation operations, damage to lighting fixtures and supports, traffic boards and information sign” because of “more intense and/or frequent high wind and/or storms”).

**Table 2. Questionnaire results of climate risk analysis on UK roads with respect to the different groups**

Category		Average values of all risk level	Overall Ranking of Risk Level
Position	Engineer	0.49	3
	CEO	0.47	2
	Manager	0.45	1
	Academic	0.54	4
Type	Consulting	0.48	2
	NGO	0.46	1
	Transport Company	0.49	3
	Academia	0.54	4
Scale	Large	0.47	1
	Middle	0.50	3
	Small	0.48	2

#### 4.3 Explore and prioritise adaptation measures for the UK road system

In response to the impacts of climate change on transportation infrastructure, the UK government has recognised adaptations on infrastructure as a need of high priority. For example, an early report called “Climate Resilient Infrastructure: Preparing for a Changing Climate” was published together with guidance on building infrastructure resilience in 2011 (HMG, 2011; HM Cabinet Office, 2011). The “Transport Resilience Review” introduced by the Department of Transport (2014) provided Highways England with detailed recommendations for adapting to extreme weather. Highways England’s Climate Adaptation Risk Assessment (2016) highlighted a series of current adaptation action plans, mainly focusing on road structures, pavements and drainage management, and will continuously monitor all the potential climate vulnerabilities. Several regional flooding adaptation actions, including the design and constructions of flood defences to protect the people and properties, have been undertaken in severely jeopardised regions. A good example of risk management was the success of dealing with the Cocker mouth's flooding in 2009. The government allocated approximately £1 million funding to support the clean-up and repairs of damaged roads and bridges within Cumbria. Additionally, Network Rail and Cumbrian County Council implemented a modal shift strategy by converting road traffic to the rail by quickly setting up a new direct rail service (DRS) and building a rail platform in Workington (Ace Geography, n.d.).

Nevertheless, according to the Adaptation Sub-Committee’s Progress Report (Committee on Climate Change, 2014), current action plans are still at the stage of internal technical documents within the relevant business areas; a detailed action plan for climate adaptation has not been officially published. Adaptation strategies are necessary to be incorporated into the planning stages of new developments as well as existing maintenance to minimise risks, reduce costs and enhance the resilience of the UK transport network in the future (Jaroszweski, 2015).

Hence, it is vital to fill the gaps in analysing the cost-effectiveness of adaptation measures and constructing adaption plans for climate change in the UK road network.

In this section, we apply an ER approach to synthesise the risk reduction results obtained by the above mentioned fuzzy Bayesian method and the associated adaptation costs data from a questionnaire survey to select the most cost-effective adaptation measures.

In our questionnaire, we asked the experts to evaluate each climate threat with and without the adaptation measures, in terms of the aforementioned risk parameters (*“Timeframe (T)”*, *“Likelihood (L)”*, *“Severity of Consequences (C)”* and *Climate Resilience (S)”*). In the case of having the adaptation measures, we also required them to evaluate the costs of implementation of adaptation measures.

The risk reductions can be calculated by the described FBR model while the corresponding adaptation costs were collected through survey and expert opinions. The parameter *“Cost-Effectiveness of Adaptation Measure”* is defined by five levels, namely, *“Very Effective”*, *“Effective”*, *“Average”*, *“Slightly Effective”* and *“Ineffective”* while *“Adaptations Cost”* is defined by *“Very low”*, *“Low”*, *“Average”*, *“High”* and *“Very High”* by the same membership functions as other risk parameters (Yang *et al.*, 2015; 2018). When adaptation measures involve, the risk reduction of the  $m^{th}$  climate threat by implementing  $n^{th}$  adaptation measure is calculated by the difference between the risk index of the  $m^{th}$  climate risk with the  $n^{th}$  adaptation measure and the risk index of the  $m^{th}$  climate risk index without any measure.

We then utilise the Hugin software to simplify the calculations to obtain all the risk levels with and without the adaptation measures. For instance, the evaluations of the potential threat “A2.

Heating and thermal expansion of bridges, buckling of joints of steel structure and paved surfaces” due to the “Temperature increase” without and with the adaptation measure “(A2a) Prioritise the selection of material, manage expansion joints and decay protection (i.e., use of revised specification with material characteristics more suited to higher temperatures and temperature profiles)” is changed from 0.51 to 0.53, and therefore, the risk reduction result is 0.02. Likewise, the risk results of all potential threats of the environmental driver on the UK roads are elaborated in Table 3, in which the adaptation measures receiving no significant risk reduction are eliminated.

**Table 3. Survey results of risk reduction and adaptation costs**

Environmental driver due to climate change	Potential climate threat on the road	Adaptation measures	Risk Result without adaptations	Risk result with adaptations	Risk reduction on $RR_{mn}$	Risk reduction grades {VE, E, A, SE, I}	Cost {VH, H, A, L, VL}
Temperature increase	A2. Heating and thermal expansion of bridges, buckling of joints of steel structure and paved surfaces	(A2a) Prioritise the selection of material, manage expansion joints and decay protection (i.e., Use of revised specification with material characteristics more suited to higher temperatures and temperature profiles)	0.51	0.56	0.05	{0, 0, 0.6667, 0.3333, 0}	{0.10, 0.30, 0.40, 0.20, 0}
		(A2b) Design and construct new bridges or replace old ones (i.e., Designs which support the revised specifications in B1 – so that supporting materials have revised specification for performance in line with B1)	0.51	0.53	0.02	{0, 0, 0, 0.6667, 0.3333}	{0.09, 0.36, 0.45, 0.09, 0}
	A3. Traffic jams/alternative routing /accidents, increasing fuel consumption and CO2 emissions, delivery delays, and consequential costs	(A3a) Map the highway network and infrastructure asset base and identify at-risk locations/structures where there are issues as measured under different scenarios	0.40	0.50	0.10	{0.3333, 0.6667, 0, 0, 0}	{0, 0.18, 0.09, 0.55, 0.18}
		(A3b) Provision of timely driver information to ‘at risk’ routes	0.40	0.52	0.12	{1, 0, 0, 0, 0}	{0, 0.09, 0.09, 0.45, 0.36}
Intense rainfall/flooding	B1. The road drainage cannot effectively remove water due to heavy rains, which results in poor or dangerous driving conditions	(B1a) Consider drain specifications to handle different rain conditions	0.43	0.50	0.07	{0, 0.3333, 0.6667, 0, 0}	{0, 0.38, 0.31, 0.31, 0}
		(B1b) Consider revised standards for drainage sewers (not the actual drain itself) to support the drain in A1	0.43	0.55	0.12	{1, 0, 0, 0, 0}	{0, 0.33, 0.33, 0.33, 0}

	B2. Rainfall events can cause rivers/watercourses to flood which damages bridges, culverts waterways and clearance, and scouring can ruin the foundation of bridges and culverts	(B2a) Improve flood estimation	<b>0.44</b>	<b>0.49</b>	<b>0.05</b>	{0, 0, 0.6667, 0.3333, 0}	{0.08, 0.08, 0.67, 0.08, 0.08}
		(B2b) Strengthen the foundation of bridges, river and bank protection, and corrosion protection	<b>0.44</b>	<b>0.55</b>	<b>0.11</b>	{0.6667, 0.3333, 0, 0, 0}	{0.18, 0.36, 0.45, 0, 0}
	B3. Rainfall events result in landslides and mudslides in hilling roads, and cause roadblocks	(B3a) Consider Slope, drain performance in landslide scenarios	<b>0.47</b>	<b>0.57</b>	<b>0.10</b>	{0.3333, 0.6667, 0, 0, 0}	{0.08, 0.08, 0.50, 0.33, 0}
		(B3b) Design standards for highways which performance to revised standards with different rain events	<b>0.47</b>	<b>0.51</b>	<b>0.04</b>	{0, 0, 0.3333, 0.6667, 0}	{0, 0.15, 0.38, 0.31, 0.15}
	B4. The road may be inundated by flooding caused by adjacent drainage systems (rivers/public sewers) flooding which renders the road unusable	(B4a) Map the highway network and infrastructure asset base and identify at-risk locations/structures where there are issues as measured under different scenarios	<b>0.48</b>	<b>0.50</b>	<b>0.02</b>	{0, 0, 0, 0.6667, 0.3333}	{0.08, 0.08, 0.17, 0.50, 0.17}
		(B4b) Provision of timely driver information to 'at risk' routes	<b>0.48</b>	<b>0.50</b>	<b>0.02</b>	{0, 0, 0, 0.6667, 0.3333}	{0, 0.25, 0.17, 0.25, 0.33}
More intense and/or frequent high wind and/or storms	C1. Storm cyclone due to heavy rainfall and high wind can trigger flooding, inundation of embankments, affect road transport and stability of bridge decks	(C1b) Consider revised height standards for highways based on scenario modelling in the area	<b>0.50</b>	<b>0.56</b>	<b>0.06</b>	{0, 0, 1, 0, 0}	{0, 0.18, 0.36, 0.36, 0.09}
	C2. Damage to lighting fixtures and supports, traffic boards and information sign	(C2a) Resilience in signs and use of nonphysical means such as telematics in vehicle and sensor technology	<b>0.51</b>	<b>0.48</b>	<b>0.03</b>	{0, 0, 0, 1, 0}	{0, 0.18, 0.27, 0.45, 0.09}
	C3. Disrupt traffic safety and emergency evacuation operations, increase traffic accidents	(C3a) Map the highway network and infrastructure asset base	<b>0.48</b>	<b>0.51</b>	<b>0.03</b>	{0, 0, 0, 1, 0}	{0, 0.08, 0.25, 0.50, 0.17}
		(C3b) Identify at risk locations / structures where there are issues as measured under different scenarios	<b>0.48</b>	<b>0.51</b>	<b>0.03</b>	{0, 0, 0, 1, 0}	{0, 0.08, 0.46, 0.31, 0.15}
		(C3c) Provision of timely driver information to 'at risk' routes	<b>0.48</b>	<b>0.50</b>	<b>0.02</b>	{0, 0, 0, 0.6667, 0.3333}	{0, 0.10, 0.30, 0.40, 0.20}
	D1. SLR can trigger inundation of coastal roads, extra demands	(D1a) Revised standards to meet / cope with higher sea levels (i.e. greater time of immersion in water)	<b>0.49</b>	<b>0.55</b>	<b>0.06</b>	{0, 0, 1, 0, 0}	{0, 0.10, 0.10, 0.80, 0}

on infrastructure when used as emergency/evacuation roads, and realign or abandon roads in threatened areas	(D1b) Revised standards of signage and edge standards, and resilience in signs and use of nonphysical means such as telematics in vehicle and sensor technology to higher areas, and edge strengthening	<b>0.49</b>	<b>0.51</b>	<b>0.03</b>	{0, 0, 0, 1, 0}	{0, 0.10, 0.30, 0.50, 0.10}
D2. SLR can deteriorate erosion of road base and bridge supports, cause bridge scour and pollution under bridges	(D2a) Revised standards for scour risk caused by higher sea levels	<b>0.50</b>	<b>0.47</b>	<b>0.03</b>	{0, 0, 0, 1, 0}	{0.11, 0.11, 0.22, 0.33, 0.22}
	(D2b) Map bridge structures for the impact of higher levels as to operating performance under normal and extreme scenarios	<b>0.50</b>	<b>0.51</b>	<b>0.01</b>	{0, 0, 0, 0.3333, 0.6667}	{0, 0.30, 0.30, 0.30, 0.10}

*Sources: CEDR (2012); IPCC (2012b); Regmi & Hanaoka (2011); The Royal Academy of Engineering (2011); UNECE (2012).*

In order to transform both climate risk and cost data into the same level, the risk reduction grades are mapped onto the five-level cost-effectiveness, where maximal risk reduction grade is interpreted as to be “*Very Effective*” and minimal risk reduction grade means “*Ineffective*” adaptation measures. The other in-between risk reduction values are allocated using a linear distribution. Simultaneously, adaptation costs are firstly obtained by averaging the survey responses and then converted into the five-level cost-effectiveness, where “*Very low*” cost is taken as to be “*Very Efficient*” adaptation measure and “*Very High*” cost means “*Ineffective*” measure. Furthermore, the ER approach (Xu and Yang, 2002) allows us to integrate the results of risk reduction with adaptations cost of the  $n^{th}$  adaptation measure for tackling the  $m^{th}$  climate threat to obtain its cost-effectiveness. The final cost- effectiveness analysis results of all adaptation measures are shown in Table 4.

**Table 4. Cost-effectiveness of adaptation measures and ranking**

<b>Environment al driver due to climate change</b>	<b>Potential climate threat on the road</b>	<b>Adaptation measures</b>	<b>Cost-effectiveness index of adaptations</b>	<b>Cost effectiveness ranking</b>
Temperature increase	A2. Heating and thermal expansion of bridges, buckling of joints of steel structure and paved surfaces	(A2a) Prioritise the selection of material, manage expansion joints and decay protection (i.e., Use of revised specification with material characteristics more suited to higher temperatures and temperature profiles)	<b>0.5090</b>	<b>8</b>



		(A2b) Design and construct new bridges or replace old ones (i.e. Designs which support the revised specifications in B1 – so that supporting materials have revised specification for performance in line with B1)	<b>0.5912</b>	<b>12</b>
	A3. Traffic jams/alternative routing /accidents, increasing fuel consumption and CO2 emissions, delivery delays and consequential costs	(A3a) Map the highway network and infrastructure asset base and identify at-risk locations/structures where there are issues as measured under different scenarios	<b>0.4325</b>	<b>5</b>
		(A3b) Provision of timely driver information to ‘at risk’ routes	<b>0.4097</b>	<b>4</b>
Intense rainfall/flooding	B1. The road drainage cannot efficiently remove water due to heavy rains, which results in poor or dangerous driving conditions	(B1a) Consider drain specifications to handle different rain conditions	<b>0.4546</b>	<b>6</b>
		(B1b) Consider revised standards for drainage sewers (not the actual drain itself) to support the drain in B1a	<b>0.3040</b>	<b>2</b>
	B2. Rainfall events can cause rivers/watercourses to flood which damages bridges, culverts waterways and clearance, and scouring can ruin the foundation of bridges and culverts	(B2a) Improve flood estimation	<b>0.5293</b>	<b>9</b>
		(B2b) Strengthen the foundation of bridges, river and bank protection, and corrosion protection	<b>0.2587</b>	<b>1</b>
	B3. Rainfall events result in landslides and mudslides in hilling roads, and cause roadblocks	(B3a) Consider Slope, drain performance in landslide scenarios	<b>0.3717</b>	<b>3</b>
		(B3b) Design standards for highways which performance to revised standards with different rain events	<b>0.5057</b>	<b>7</b>
	B4. The road may be inundated by flooding caused by adjacent drainage systems (rivers/public sewers) flooding which renders the road unusable	(B4a) Map the highway network and infrastructure asset base and identify at-risk locations/structures where there are issues as measured under different scenarios	<b>0.6972</b>	<b>19</b>
		(B4b) Provision of timely driver information to ‘at risk’ routes	<b>0.7057</b>	<b>20</b>
More intense and/or frequent high	C1. Storm cyclone due to heavy rainfall and high wind can trigger flooding, inundation of embankments, affect road transport and stability of bridge decks	(C1b) Consider revised height standards for highways based on scenario modelling in the area	<b>0.5300</b>	<b>10</b>

wind and/or storms	C2. Damage to lighting fixtures and supports, traffic boards and information sign	(C2a) Resilience in signs and use of nonphysical means such as telematics in vehicle and sensor technology	<b>0.6549</b>	<b>14</b>
	C3. Disrupt traffic safety and emergency evacuation operations, increase traffic accidents	(C3a) Map the highway network and infrastructure asset base	<b>0.6801</b>	<b>17</b>
		(C3b) Identify at-risk locations/structures where there are issues as measured under different scenarios	<b>0.6587</b>	<b>15</b>
		(C3c) Provision of timely driver information to 'at risk' routes	<b>0.7060</b>	<b>21</b>
SLR	D1. SLR can trigger inundation of coastal roads, extra demands on infrastructure when used as emergency/evacuation roads, and realign or abandon roads in threatened areas	(D1a) Revised standards to meet/cope with higher sea levels (i.e. greater time of immersion in water)	<b>0.5667</b>	<b>11</b>
		(D1b) Revised standards of signage and edge standards, and resilience in signs and use of nonphysical means such as telematics in vehicle and sensor technology to higher areas, and edge strengthening	<b>0.6676</b>	<b>16</b>
	D2. SLR can deteriorate erosion of road base and bridge supports, cause bridge scour and pollution under bridges	(D2a) Revised standards for scour risk caused by higher sea levels	<b>0.6517</b>	<b>13</b>
		(D2b) Map bridge structures for the impact of higher levels as to operating performance under normal and extreme scenarios	<b>0.69</b>	<b>18</b>

The most cost-effective adaptation measure is “(B2b) Strengthen the foundation of bridges, river and bank protection, and corrosion protection” to address the potential threat “B2. Rainfall events can cause rivers/watercourses to flood which damages bridges, culverts waterways and clearance, and scouring can ruin the foundation of bridges and culverts”. The other top two adaptation measures “(B1b) Consider revised standards for drainage sewers (not the actual drain itself) to support the drain in B1a” and “(B3a) Consider Slope, drain performance in landslide scenarios” are also aimed to address “intense rainfall/flooding” issues. Whilst the least effective one is “(C3c) Provision of timely driver information to ‘at risk’ routes” to cope with the potential threat “C3. Disrupt traffic safety and emergency evacuation operations, increase traffic accidents” due to the “more intense and/or frequent high wind and/or storms”.

## **5. Discussion and research implications**

The findings from the survey of 19 experts in this study offer a board overview of how roads can be adapted to climate change impacts in the UK. Overall, temperature increase, precipitation change/flooding and extreme weather are considered as the top three environmental drivers due to climate change followed by snow, flooding and high wind.

Unsurprisingly, the modelling results show that the highest potential climate threats to the roads in Britain fall into “A3. Traffic jams/alternative routing /accidents, increasing fuel consumption and CO<sub>2</sub> emissions, delivery delays and consequential costs owing to increased temperature”, followed by “B1”. The road drainage cannot effectively remove water due to heavy rains, which results in poor or dangerous driving conditions”, and “B2. Rainfall events can cause rivers/watercourses to flood which damages bridges, culverts waterways and clearance, and scouring can ruin the foundation of bridges and culverts”, respectively. Interestingly, among the top concerned risks owing to increased temperature, the impacts including traffic jams, alternative routing, accidents and delivery delays are highly related to the public’s daily life. While increasing fuel consumption, CO<sub>2</sub> emissions and consequential costs are also visible and widespread issues which have been discussed in past decades. These findings are also consistent with the current priorities of tackling flooding and increased temperature issues in climate change adaptation in the UK, but they are more specific so as to provide insights for the further development of practical adaptation measures. For instance, the most cost-effective adaptation measures in most categorisation are associated with to tackling the most significant threats “B1” and “B2” due to “intense rainfall and flooding”. In other words, some measures can be successfully adapt to the threats of intense rainfall and flooding on the UK roads., thereafter, another high risk related to temperature increase (i.e. “A3”) has not yet been well

addressed with cost-effective measure. It reveals the fact that more resources are still required for dealing with diverse climate change threats by effective adaptation planning.

The perceptions from 19 domain experts, such as CEOs/transport directors, transport planners, transport engineers and road academics, stand in the overall situation with regard to the impacts of climate change and adaptations in the UK roads. By dividing participants into three categories in terms of their position, and type and scale of their entities, managers from large NGOs hold the most concerns on climate risks and their impacts on the UK road system. Simultaneously, the threat “A3” is on the top list among all the groups. By contrast, “B4. The road may be inundated by flooding caused by adjacent drainage systems (rivers/public sewers) flooding which renders the road unusable” posed by “intense rainfall/flooding” and “C2. Disrupt traffic safety and emergency evacuation operations, damage to lighting fixtures and supports, traffic boards and information sign” posed by “more intense and/or frequent high wind and/or storms” are the lowest risky threats from the perspectives of academia and middle-size entities.

Notably, almost all the respondents who provide the details about their experience on climate impacts in the past ten years stress flooding. For example, significant floods caused widespread damage to highway infrastructure, road deterioration and closures, service stoppage, as well as bridges being washed away in June 2000, November 2006, June 2012, July 2014 and December 2015. Similarly, our modelling results indicate that the most cost-effective adaptation measures are all relevant to the risks posed by intense rainfall/flooding, namely “(B2b) Strengthen the foundation of bridges, river and bank protection, and corrosion protection”, “(B1b) Consider revised standards for drainage sewers (not the actual drain itself) to support the drain in B1a” and “(B3a) Consider Slope, drain performance in landslide scenarios”. Therefore, it can be interpreted that there are two cost-effective measures, “(B1b)” and “(B2b)” to address the top

risk threats “(B1)” and “(B2)” respectively regarding the flooding issue on roads. Our society has more experience and mature measures (of less uncertain knowledge) on tackling flooding, compared to other climate risks. However, for temperature increase, the current adaptation measures, such as “(A3a)” and “(A3b)”, are still insufficient to tackle the significant climate risk “(A3)”.

Although existing adaptation plans for climate change were recognised to be at an initial stage, 28% of total respondents have implemented an adaptation plan, and 33% have shown a positive intention to make a specific adaptation plan for climate change impacts in the future. As for the adaptation planning horizon, Highways England is required to report every five years under the Adaptation Reporting Power in the Climate Change Act, which is also in line with the official climate projects (last used UKCP09). Current time horizon of road asset life/activity is evaluated by two general categories: short-term (<30 years) and longer-term ( $\geq 30$  years). Whilst the time horizon for climate change effects can be divided into short-term (present-2020), mid-long term (2020-2080) and long-term (beyond 2080) (Highways England, 2016). Owing to the uncertainties of climate change itself, adaptation plans should consider a longer time horizon for addressing climate change issues in the future. This time horizon could be linked to asset lifecycles up to 120 years, as an interviewee stated. In the meantime, the project-based characteristic in road planning may diversify the time horizon in different road routes depending upon complex conditions (i.e., geography, severity and likelihood of climate change, and adaptation budgets). Accordingly, to set up a reasonable time horizon for adaptation planning, it requires considering multiple factors including road asset lifecycle, climate projects and route characteristics, *etc.*, to be explored more in future.

From the answers to the open-ended questions, we find that one of the significant challenges in future planning is to guarantee that climate change is embedded in standards, which needs a review of technical specifications (e.g., the Design Manual for Roads and Bridges) (Highways England, 2016). With a new set of climate projections (UKCP18) published in Nov 2018 by the UK government, more review and discussion around derived products in the road sector are remained to be done. The demands of adapting transport to climate change and extreme weather, including both transport policy and infrastructure development, have been reemphasised in recent discussions of the International Transport Forum (ITF, 2015a; 2015b; 2016). Other mitigation measures, at the meantime, should be combined with adaptation measures to combat carbon emission, as one of the top concerns due to increased temperature revealed by our survey and a primary objective highlighted in Highways England Delivery Plan (2015-2020)(Highways England, 2015). Moreover, risk analysis is still on top of the list for future adaptation planning and might necessitate a standardised approach established by diverse stakeholders (i.e., in UKCP18 Government User Group). Last but not least, a successful adaptation plan is made on the basis of informing budgetary constraints and striking a balance between technical opinions and corporate priorities.

## **6. Conclusions**

In summary, this paper presents an innovative conceptual framework of adaptation planning for climate change and how it fits the UK road network. The study performs a comprehensive risk analysis, through applying a mathematical FRB model to quantify the climate risks posed by climate change and prioritise the cost-effective adaptation measures when objective data is unavailable or incomplete in reality. The utilisation of mix-methods including literature review, survey and interview not only offers primary data for modelling requirements but also lays an essential foundation to trigger a broader discussion about adaptation planning in road systems.

Both theoretical and practical contributions are achieved. In light of the previous climate adaptation research on ports, this paper reiterates the reliability and validity of the utilisation of FBR model in the context of transport systems. From the modelling perspective, this work brings novelty by considering climate resilience and expanding the risk attribute of severity of consequence into three sub-attributes including economic loss, damage to the environment, and injuries and/or loss of life. It advances the-state-of-the-art techniques in the current relevant literature from a single to multiple tier structure. The main contributions in this part lie in the rich raw data collected from real world that provides useful practical insights for road resilience when facing increasingly frequent and severe climate change events.

Furthermore, being a pioneer survey on the British road network with latest primary data offers a comprehensive overview of the most significant risks posed by climate change and corresponding cost-effectiveness adaptation measures. The survey results have supported the evidence for the existence of a number of the relevant issues identified in the literature review (e.g., temperature increase and flooding). With the increasing number of studies on climate risks management on diverse transportation systems, it is anticipated, therefore, the findings of this paper will contribute to future regional studies and trigger more in-depth discussions in relevant topics, especially for the multi-mode research (such as in seaports and airports (Poo *et al.*, 2018; Monioudi *et al.*, 2018)).

This paper also has its practical implications for the road industry. The useful adaptation framework for constructing or developing an adaptation plan for climate change offers a new thinking pattern by integrating mathematical modelling and qualitative consultation into decision making. Besides, the results are expected to be shared with most of the participants in

the survey including highway authorities, transport consulting companies, governments and relevant associations. Thus, it calls for more attention of transport administrators on the significance of the impacts that climate change poses to road planning. Through illustrating a general situation of climate change and adaptation planning on the UK road sector, the survey results also provide transport stakeholders with a better interpretation on the existing climate risks.

However, it is admitted that the single consultation with Highways England may not be convincing, hence, future works might continuously refine the proposed framework via case studies (e.g., more interviews) with relevant bodies, such as Environmental Agency, Transport for London and other local transport authorities. This adaptation framework together with risk analysis methods are of high generalisation and can be tailored and used to climate change adaptation effectively, such as in different transport modes (i.e., risk assessment in railways (Wang *et al.*, 2018) and multiple regions (i.e., developing countries) to further strengthen its flexibility and advantages. These ideas will open further research questions and build upon existing knowledge, approach and data collection.

## **Acknowledgements**

This research is financially supported by Liverpool John Moores University, AECOM UK and EU H2020 MC RISE programme (Grant No. GOLF-777742).

## **References**



Ace Geography (n.d.). Flooding Case studies: Cockermouth, UK - Rich Country (MEDC). Retrieved on 20 December 2017 from <http://www.acegeography.com/flooding-case-studies-gcse.html>

Baksh, A. A., Abbassi, R., Garaniya, V., & Khan, F. (2018). Marine transportation risk assessment using Bayesian Network: Application to Arctic waters. *Ocean Engineering*, 159, 422-436.

BBC News (4 December 2015). Cumbria hit by flooding after heavy rain. Retrieved on 9 August 2017 from <http://www.bbc.com/news/uk-england-cumbria-35003649>

BBC News (19 September 2018). Storm Ali: two killed as severe winds lash UK and Ireland. Retrieved on 4 Oct 2018 from <https://www.bbc.com/news/uk-45572946>

Beheshtian, A., Donaghy, K. P., Geddes, R. R., & Gao, H. O. (2018). Climate-adaptive planning for the long-term resilience of transportation energy infrastructure. *Transportation Research Part E: Logistics and Transportation Review*, 113, 99-122.

Bertone, E., Sahin, O., Richards, R., & Roiko, R. A. (2015, December). Bayesian Network and system thinking modelling to manage water-related health risks from extreme events. In *Industrial Engineering and Engineering Management (IEEM), 2015 IEEE International Conference on IEEE*, 1272-1276.

Bles, T., Ennesser, Y., Falemo, S., Lind, B., Mens, M., Ray, M., & Sandersen, F. (2010). Risk management for roads in a changing climate: A Guidebook to the RIMAROCC Method. Retrieved on 7 May 2017 from [http://www.cedr.eu/download/other\\_public\\_files/research\\_programme/eranet\\_road/call\\_2008\\_climate\\_change/rimarocc/01\\_Rimarocc-Guidebook.pdf](http://www.cedr.eu/download/other_public_files/research_programme/eranet_road/call_2008_climate_change/rimarocc/01_Rimarocc-Guidebook.pdf)

Bojadziev, G., & Bojadziev, M. (1996). *Fuzzy sets, fuzzy logic, applications* (Vol. 5). World scientific.

BOS (2017). BOS Online Survey Tool. Retried on 7 May 2017 from <https://www.onlinesurveys.ac.uk/>

CEDR (2012). Adaptation to climate change, Conference of European Directors of Roads.

Chinowsky, P. S., Schweikert, A. E., Strzepek, N., & Strzepek, K. (2015). Road infrastructure and climate change in Vietnam. *Sustainability*, 7(5), 5452-5470.

Committee on Climate Change (2014). Managing climate risks to well-being and the economy. Adaptation Sub-Committee Progress Report 2014.

Committee on Climate Change (2017). 2017 Report to Parliament – Progress in preparing for climate change.

De Bruin, K., Dellink, R., Ruijs, A., Bolwidt, L., van Buuren, A., Graveland, J., . . . Roetter, R. (2009). Adapting to climate change in The Netherlands: an inventory of climate adaptation options and ranking of alternatives. *Climatic Change*, 95(1), 23-45.

DEFRA (2006). The UK's fourth national communication under the UN framework convention on climate change. London: Department for Environment, Food and Rural Affairs.

Demirel, E. (2011). *Economic models for inland navigation in the context of climate change* (Dissertation). VU University, Amsterdam.

Department for Transport (2014). Transport Resilience Review: A review of the resilience of the transport network to extreme weather events. Retrieved on 4 July 2017 from [https://assets.publishing.service.gov.uk/government/uploads/system/uploads/attachment\\_data/file/335115/transport-resilience-review-web.pdf](https://assets.publishing.service.gov.uk/government/uploads/system/uploads/attachment_data/file/335115/transport-resilience-review-web.pdf)

Dyck, R., Sadiq, R., Rodriguez, M., Simard, S., & Tardif, R. (2014). A comparison of membership function shapes in a fuzzy-based fugacity model for disinfection byproducts in

indoor swimming pools. *International Journal of System Assurance Engineering and Management*, 1-13.

Eden, P. (2007). January 2007 Wet, windy and exceptionally mild until the 20th; much quieter last ten days. *Weather*, 62(3).

Edwards, J. B. (1994). Wind-related road accidents in England and Wales 1980–1990. *Journal of Wind Engineering and Industrial Aerodynamics*, 52(1-3), 293-303.

Edwards, T. (2017). Current and future impacts of sea level rise on the UK. Foresight – future of the sea evidence review. Government office for science, UK.

Eisenack, K., Stecker, R., Reckien, D., & Hoffmann, E. (2012). Adaptation to climate change in the transport sector: a review of actions and actors. *Mitigation and Adaptation Strategies for Global Change*, 17(5), 451-469.

EPA (2009). Climate Change- Health and Environmental Effects: Adaptation. Retrieved on 10 June 2009 from <https://www.epa.gov/sites/production/files/signpost/cc.html>

EPA (2014). U.S. Environmental Protection Agency Climate Change Adaptation Plan. Publication Number: EPA 100-K-14-001,

European Climate Adaptation Platform, (2012). Retrieved on 1 June 2016 from <https://www.eea.europa.eu/themes/climate/european-climate-adaptation-platform-climate-adapt>

Galbraith, R.M., Price, D.J., & Shackman, L.S. (2005). Scottish road network climate change study. Scottish Government, Glasgow.

Gutierrez, B. T., Plant, N. G., & Thieler, E. R. (2011). A Bayesian network to predict coastal vulnerability to sea level rise. *Journal of Geophysical Research: Earth Surface*, 116(F2).

Harvey, M., Whetton, P., McInnes, K. L., Cechet, B., McGregor, J. L., Nguyen, K., ... & Martin, T. (2004). Impact of climate change on road infrastructure. Austroads, Report No. AP-R243/04. *Austroads and the Bureau of Transport and Regional Economics, Sydney.*

Highways Agency (2007). *Highways agency – Adverse winter, March 2007*. Retrieved on 8 December 2017 from <http://www.highways.gov.uk/business/17025.aspx>

Highways Agency (2009). Climate Change Adaptation Strategy and Framework. Revision B - issued November 2009.

Highways England (2015). Highways England Delivery Plan 2015-2020.

Highways England (2016). Climate Adaptation Risk Assessment Progress Update 2016.

HM Cabinet Office (2011) Infrastructure Resilience Programme: Resilience in Society: Infrastructure, Communities and Businesses. Retrieved on June 1 2016 from <http://www.cabinetoffice.gov.uk/>

HMG (Her Majesty's Government) (2011) Climate Resilient Infrastructure: Preparing for a Changing Climate. The Secretary of State for Environment, Food and Rural Affairs by Command of Her Majesty.

Hooper, E., & Chapman, L. (2012). Chapter 5 The Impacts of Climate Change on National Road and Rail Networks. In *Transport and Climate Change*, 105-136. Emerald Group Publishing Limited.

HUGIN v. 8.5 (2017). Hugin Expert. Retrieved on 10 May 2017 from <http://www.hugin.com/index.php/resources/>

ICF International (2008). *The potential impacts of global sea level rise on transportation infrastructure*. US Department of Transport, Center for Climate Change and Environmental Forecasting.

IPCC (2012a). Glossary of terms. A Special Report of Working Groups I and II of the Intergovernmental Panel on Climate Change (IPCC). In *Managing the Risks of Extreme Events and Disasters to Advance Climate Change Adaptation* (Field, C.B., V. Barros, T.F. Stocker, D. Qin, D.J. Dokken, K.L. Ebi, M.D. Mastrandrea, K.J. Mach, G.-K. Plattner, S.K.

IPCC (2012b). Managing the Risks of Extreme Events and Disasters to Advance Climate Change Adaptation. A Special Report of Working Groups I and II of the Intergovernmental Panel on Climate Change [Field, C.B., V. Barros, T.F. Stocker, D. Qin, D.J. Dokken, K.L. Ebi, M.D. Mastrandrea, K.J. Mach, G.-K. Plattner, S.K. Allen, M. Tignor, and P.M. Midgley (eds.)]. Cambridge University Press, Cambridge, UK, and New York, NY, USA, 563.

ITF (2015a), Adapting Transport Policy to Climate Change: Carbon Valuation, Risk and Uncertainty, OECD Publishing, Paris. Retrieved on 8 August 2018 from <https://www.itf-oecd.org/sites/default/.../adapting-transport-policy-climate-change.pdf>

ITF (2015b), Adapting Transport Infrastructure to Climate Change: How to Protect Assets Against Increased Risks from Extreme Weather. OECD Publishing, Paris. Retrieved on 8 August 2018 from <https://www.itf-oecd.org/adapting-transport-infrastructure-climate-change>

ITF (2016), Adapting Transport to Climate Change and Extreme Weather: Implications for Infrastructure Owners and Network Managers. ITF Research Reports, OECD Publishing, Paris. Retrieved on 8 August 2018 from <http://dx.doi.org/10.1787/9789282107928-en>

Allen, M. Tignor, and P.M. Midgley (eds.). Cambridge University Press, Cambridge, UK, and New York, NY, USA, 555-564.

Jaroszweski, D., Chapman, L., & Petts, J. (2010). Assessing the potential impact of climate change on transportation: The need for an interdisciplinary approach. *Journal of Transport Geography*, 18(2), 331–335.

Jaroszweski, D. (2015). Chapter 6 The Impacts of Climate Change on the National Freight Sector. In *Transport and climate change*, 137-173. Emerald Group Publishing Limited.

Jenkins, G. J. (2009). UK climate projections: briefing report. Met Office Hadley Centre.

Kim, H. G., Lee, D. K., & Park, C. (2018). Assessing the Cost of Damage and Effect of Adaptation to Landslides Considering Climate Change. *Sustainability*, 10(5), 1628.

Knowledge for Climate (2014). Knowledge for Climate 2008 – 2014. Retrieved on 8 August 2018 from <https://climate-adapt.eea.europa.eu/countries-regions/countries/netherlands>

Koetse, M. J., & Rietveld, P. (2009). The impact of climate change and weather on transport: An overview of empirical findings. *Transportation Research Part D: Transport and Environment*, 14(3), 205-221.

Koetse, M. J., & Rietveld, P. (2012). Adaptation to climate change in the transport sector. *Transport Reviews*, 32(3), 267-286.

Lemmen, D.S., Warren, F.J., Lacroix, J., & Bush, E. (2008). From impacts to adaptation: Canada in a changing climate 2007. *Government of Canada, Ottawa*.

Love, G., Soares, A., & Püempel, H. (2010). Climate change, climate variability and transportation. *Procedia Environmental Sciences*, 1, 130-145.

Marttila, V., Granholm, H., Laanikari, J., Yrjölä, T., Aalto, A., Heikinheimo, P., ... & Paunio, M. (2005). Finland's national strategy for adaptation to climate change. *Publications of the Ministry of Agriculture and Forestry 1a/2005*.

Met office (2015). Flooding in Cumbria December 2015. Retrieved on August 8 2017 from <https://www.metoffice.gov.uk/climate/uk/interesting/december2015>

Meyer, M., Flood, M., Keller, J., Lennon, J., McVoy, G., Dorney, C., ... & Smith, J. (2014). *Strategic Issues Facing Transportation, Volume 2: Climate Change, Extreme Weather Events, and the Highway System: Practitioner's Guide and Research Report*, 5, 20-83.

Mikovits, C., Rauch, W., & Kleidorfer, M. (2018). Importance of scenario analysis in urban development for urban water infrastructure planning and management. *Computers, Environment and Urban Systems*, 68, 9-16.

Ministry of Agriculture and Forestry (2014). Finland's National Climate Change Adaptation Plan 2022. ISBN 978-952-453-862-6 (Electronic version).

Monioudi, I. N., Asariotis, R., Becker, A., Bhat, C., Dowding-Gooden, D., Esteban, M., ... & Phillips, W. (2018). Climate change impacts on critical international transportation assets of Caribbean Small Island Developing States (SIDS): the case of Jamaica and Saint Lucia. *Regional Environmental Change*, 1-15.

Munslow, J. (2011). Asset Management? For roads? Developing a holistic asset management approach in a local highway authority service. Paper presented at the Asset Management Conference 2011, IET and IAM.

NAS (2016). National Climate Adaptation Strategy 2016. Retrieved on 8 August 2018 from [https://ruimtelijkeadaptatie.nl/publish/pages/.../2016\\_12\\_02\\_nas\\_netherlands\\_4.pdf](https://ruimtelijkeadaptatie.nl/publish/pages/.../2016_12_02_nas_netherlands_4.pdf) NRCNA (2008). *Potential impacts of climate change in US transportation, Vol 290*. National Research Council of the National Academies. Transport Research Board, Washington, DC.

Ng, AKY., Chen, SL., Cahoon, S., Brooks B. & Yang, Z. (2013) Climate change and the adaptation strategies of ports: the Australian experiences. *Research in Transportation Business and Management* 8, 86-194.

Nicolet-Monnier, M., & Gheorghe, A. V. (1996). Quantitative risk assessment of hazardous materials transport systems. *Kluwer*, 5(8), 1915–1928.

Perry, A. H. (1990). Highwinds on highways. *RMS Sub Group on Meteorological Observing Systems, Meteorological Data in Support of Road and Rail Transport, Institute of Mechanical Engineers, London.*

Peterson, T.C., M. McGuirk, T.G. Houston, A.H. Horvitz & M.F. Wehner (2008). Climate variability and change with implications for transportation. *Transportation Research Board.*

Rattanachot, W., Wang, Y., Chong, D., & Suwansawas, S. (2015). Adaptation strategies of transport infrastructures to global climate change. *Transport Policy*, 41, 159-166.

Regmi, M. B., & Hanaoka, S. (2011). A survey on impacts of climate change on road transport infrastructure and adaptation strategies in Asia. *Environmental Economics and Policy Studies*, 13(1), 21-41.

Poo, M. C. P., Yang, Z., Dimitriu, D., & Qu, Z. (2018). Review on Seaport and Airport Adaptation to Climate Change: A Case on Sea Level Rise and Flooding. *Marine Technology Society Journal*, 52(2), 23-33.

Schweikert, A., Chinowsky, P., Espinet, X., & Tarbert, M. (2014). Climate change and infrastructure impacts: comparing the impact on roads in ten countries through 2100. *Procedia Engineering*, 78, 306-316.

Sii, H. S., & Wang, J. (2002). Safety assessment of FPSOs –The process of modelling system safety and case studies. *Report of the Project—The Application of Approximate Reasoning Methodologies to Offshore Engineering Design~ EPSRC GR/R30624 and GR, 32413.*

Strauch, R., Raymond, C., Rochefort, R., Hamlet, A., & Lauver, C. (2015). Adapting transportation to climate change on federal lands in Washington State, USA. *Climatic Change*, 130(2), 185-199.



The Future Cities Adaptation Compass (2012a). Future Cities – urban networks to face climate change. Retrieved on 1 June 2016 from [www.future-cities.eu/uploads/media/Future\\_Cities-Adaptation\\_Compass\\_en.pdf](http://www.future-cities.eu/uploads/media/Future_Cities-Adaptation_Compass_en.pdf)

The Future Cities Adaptation Compass (2012b). Future Cities – urban networks to face climate change. Supplement explore adaptation options. Retrieved on 1 June 2016 from [www.future-cities.eu/fileadmin/user.../FC\\_AdaptationCompass\\_Supplement\\_web.pdf](http://www.future-cities.eu/fileadmin/user.../FC_AdaptationCompass_Supplement_web.pdf)

The Mail (20 Oct 2015). Storm Desmond causes Cumbria flood chaos – Sunday. Retrieved on 8 August 2017 from <http://www.nwemail.co.uk/news/barrow/Storm-Desmond-causes-Cumbria-flood-chaos-Sunday-0f211192-16fb-47e6-98bc-bf5a3fe81161-ds>

The Royal Academy of Engineering (2011). Infrastructure, Engineering and Climate Change Adaptation – ensuring services in an uncertain future. Retrieved on 5 May 2016 from [www.raeng.org.uk/adaptation](http://www.raeng.org.uk/adaptation)

Tighe, M., Pollino, C. A., Cuddy, S. M., & Whitfield, S. (2007). A Bayesian approach to assessing regional climate change pressures on natural resource conditions in the central west of NSW, Australia. In *International Congress on Modelling and Simulation (MODSIM2007)*, December, 10-13.

Timothy, J. (2010). Fuzzy logic with engineering applications, pp,102.

TRB (2008). Potential impacts of climate change on US transportation. *TRB Special Report 290, Transportation Research Board, Washington, DC.*

UNCTAD (2012). Ad Hoc Expert Meeting on Climate Change Impacts and Adaptation: A Challenge for Global Ports: Geneva, Palais des Nations, 29-30 September 2011. Main Outcomes and Summary of Discussions. UNCTAD, Geneva, Switzerland

UNECE (2012). Climate change impacts and adaptation for international transport networks. United Nations Economic Commission for Europe Transport Division Experts Group, Annex IV: Questionnaire.

UNISDR (2017). United Nations Office for Disaster Risk Reduction: Terminology. Retrieved on 10 July 2017 from <https://www.unisdr.org/we/inform/terminology>

Urciuoli, L. (2011). Investing in transport security solutions: using the quantitative risk assessment (qra) approach. *International Journal of Risk Assessment & Management*, 15(4), 275-298.

Vogt and Gardner (2012). Sampling for Surveys. In *When to use what research design*. W. Paul Vogt, Dianne C. Gardner and Lynne M (eds.). Haeffelethe, Guilford Press, New York NY, 128-129.

Walker, L., Figliozi, M., Haire, A., & MacArthur, J. (2011). Identifying Surface Transportation Vulnerabilities and Risk Assessment Opportunities under Climate Change: Case Study in Portland, Oregon. *Transportation Research Record: Journal of the Transportation Research Board*, (2244), 41-49.

Wan, C., Zhang, D., Yan, X., & Yang, Z. (2018a). A novel model for the quantitative evaluation of green port development—A case study of major ports in China. *Transportation Research Part D: Transport and Environment*, 61, 431-443.

Wan, C., Yang, Z., Zhang, D., Yan, X., & Fan, S. (2018b). Resilience in transportation systems: a systematic review and future directions. *Transport Reviews*, 38(4), 479-498.

Wang, J., Yang, J. B., & Sen, P. (1995). Safety analysis and synthesis using fuzzy sets and evidential reasoning. *Reliability Engineering & System Safety*, 47(2), 103-118.

Wang, J., Yang, J. B., & Sen, P. (1996). Multi-person and multi-attribute design evaluations using evidential reasoning based on subjective safety and cost analyses. *Reliability Engineering & System Safety*, 52(2), 113-128.

Wang, T. (2015). *Adapting to the risks and uncertainties posed by climate change on ports*. Master Thesis. Department of Supply Chain Management, Asper School of Business, University of Manitoba, Winnipeg, MB.

Wang, T., Qu, Z., Yang, Z., Nichol, T., Dimitriu, D., Clarke, G. and Bowden, D. (2018). Impacts of Climate Change on Rail Systems: A New Climate Risk Analysis Model. In: Haugen, S., Barros, A., Gulijk, C.V., Kongsvik, T., Vinnem, J. (Eds): *Safety and Reliability – Safe Societies in a changing World*. London: CRC Press.

Wu, Y. J., Hayat, T., Clarens, A., & Smith, B. (2013). Climate change effects on transportation infrastructure: scenario-based risk analysis using geographic information systems. *Transportation Research Record: Journal of the Transportation Research Board*, (2375), 71-81.

Yang, J. B., & Xu, D. L. (2002). On the evidential reasoning algorithm for multiple attribute decision analysis under uncertainty. *IEEE Transactions on Systems, Man, and Cybernetics-Part A: Systems and Humans*, 32(3), 289-304.

Yang Z.L., Bonsall S. and Wang J. (2008) Fuzzy rule-based Bayesian reasoning approach for prioritization of failures in FMEA. *IEEE Transactions on Reliability* 57, 517-528.

Yang, Z.L., Bonsall, S. and Wang, J. (2009) Use of fuzzy evidential reasoning in maritime security assessment. *Risk Analysis* 29(1), 95-120.

Yang, Z.L., Bonsall, S. and Wang, J. (2010) Facilitating uncertainty treatment in the risk assessment of container supply chains. *Journal of Marine Engineering and Technology* A17, 23-36.

Yang, Z.L., Ng, AKY., Lee, PTW., Wang, T., Rodrigues, VS., Pettit, S. & Harris, I. (2015). Modelling risk based cost analysis of port adaptation measures to climate change. *Proceedings of the International Conference of Asian Logistics Round Table (ALRT) 2015, Taipei, Taiwan, 31 August-1 September*.

Yang, Z.L., Cahoon, S., Chen SL., Ng AKY. & Becker, A. (2016). In: Ng, AKY, Cahoon S, Chen SL, Austin B (Eds.) Analyzing Risks Posed by Climate Change on Ports: A Fuzzy Approach. *Climate Chang and Adaptation Planning for Ports, Routledge Publishing, UK*, 24-44.

Yang, Z., Ng, A. K., Lee, P. T. W., Wang, T., Qu, Z., Rodrigues, V. S., & Lau, Y. Y. (2018). Risk and cost evaluation of port adaptation measures to climate change impacts. *Transportation Research Part D: Transport and Environment*, 61, 444-458.

Zhang, D., Yan, X. P., Yang, Z. L., Wall, A., & Wang, J. (2013). Incorporation of formal safety assessment and Bayesian network in navigational risk estimation of the Yangtze River. *Reliability Engineering & System Safety*, 118, 93-105.

## Appendix A. Definition of parameters

**Table A1. Timeframe** - when you expect first to see this impact

Grade	Linguistic terms	Approximate timeframe	Fuzzy memberships
1	Very Short (VS)	<1 year	(0, 0, 0.1, 0.3)
2	Short (S)	1-5 years	(0.1, 0.3, 0.5)
3	Medium (M)	5-15 years	(0.3, 0.5, 0.7)
4	Long (L)	15-20 years	(0.5, 0.7, 0.9)
5	Very Long (VL)	>20 years	(0.7, 0.9, 1, 1)

**Table A2. Likelihood** that the effect will occur

Grade	Linguistic terms	Likelihood	Fuzzy memberships
1	Very High (VH)	>90%	(0, 0, 0.1, 0.3)
2	High (H)	60-90%	(0.1, 0.3, 0.5)
3	Average (A)	40-59%	(0.3, 0.5, 0.7)
4	Low (L)	10-39%	(0.5, 0.7, 0.9)
5	Very Low (VL)	<10%	(0.7, 0.9, 1, 1)

**Table A3.1. Severity of consequences of this impact: — damage to infrastructure (INF)**

Grade	Linguistic terms	The damage committed to property is valued	Fuzzy memberships
1	Catastrophic (CA)	>£2million	(0, 0, 0.1, 0.3)
2	Critical (CR)	£1million - £2million	(0.1, 0.3, 0.5)
3	Major (Ma)	£500,000 - £999,999	(0.3, 0.5, 0.7)
4	Minor (MI)	£100,000 - £499,999	(0.5, 0.7, 0.9)
5	Negligible (NE)	<£100,000	(0.7, 0.9, 1, 1)

**Table A3.2. Severity of consequences of this impact: — injuries and/or loss of lives (INJ)**

Grade	Linguistic terms	Injuries and/or loss of life	Fuzzy memberships
1	Catastrophic (CA)	Life-threatening injuries or loss of life	(0, 0, 0.1, 0.3)
2	Critical (CR)	Major injuries and lost time incident	(0.1, 0.3, 0.5)
3	Major (Ma)	Injuries and lost time incident	(0.3, 0.5, 0.7)
4	Minor (MI)	Minor injuries, no lost time incidents	(0.5, 0.7, 0.9)
5	Negligible (NE)	No injuries, no lost time incidents	(0.7, 0.9, 1, 1)

**Table A3.3. Severity of consequences of this impact: — damage to environment (ENV)**

Grade	Linguistic terms	The percentage of this event contributes to the total amount of	Fuzzy memberships
-------	------------------	---	-------------------

		<b>damage of surrounding environment</b>	
1	Catastrophic (CA)	>50%	<b>(0, 0, 0.1, 0.3)</b>
2	Critical (CR)	30-50%	<b>(0.1, 0.3, 0.5)</b>
3	Major (Ma)	20-29%	<b>(0.3, 0.5, 0.7)</b>
4	Minor (MI)	10-19%	<b>(0.5, 0.7, 0.9)</b>
5	Negligible (NE)	<10%	<b>(0.7, 0.9, 1, 1)</b>

**Table A4. Climate Resilience**

<b>Grade</b>	<b>Linguistic terms</b>	<b>Description</b>	<b>Fuzzy memberships</b>
1	Very Weak (VW)	Very weak (0-20%) capacity of the transportation system to anticipate, absorb, accommodate, or recover from the effects of a climate event and requiring a very long period (a year) and very high cost of recovery (£10million above)	<b>(0, 0.1, 0.3)</b>
2	Weak (W)	Weak (20-39%) capacity of the transportation system to anticipate, absorb, accommodate, or recover from the effects of a climate event and requiring a long period (a month) and high cost of recovery (£1million above)	<b>(0.1, 0.3, 0.5)</b>
3	Average (A)	Average (40-59%) capacity of the transportation system to anticipate, absorb, accommodate, or recover from the effects of a climate event and requiring a certain length of time (a week) and cost of recovery (£100,001-£1million)	<b>(0.3, 0.5, 0.7)</b>
4	Strong (S)	Strong (60-80%) capacity of the transportation system to anticipate, absorb, accommodate, or recover from the effects of a climate event in a relatively timely and efficient manner (a day) and requiring some cost of recovery (£10,001-£100,000)	<b>(0.5, 0.7, 0.9)</b>
5	Very Strong (VS)	Very strong (80% above) capacity of the transportation system to anticipate, absorb, accommodate, or recover from the effects of a climate event in a very timely and efficient manner (12hrs) and requiring a slight cost of recovery (0-£10,000)	<b>(0.7, 0.9, 1, 1)</b>

Source: IPCC (2012a)

*The climate resilience can be influenced by three factors. The worst-case scenario is applied to assess the system's resilience for simplifying the description to allow experts choose linguistic terms. For instance, if the capacity of the transport system to recover is "Very Strong", the time of the recovery is "Strong" and the cost of recovery is "Weak", then the final assessment result should be "Weak".*

## Appendix B. FRB with belief structures for climate risk analysis

Rules	Antecedent Attributes				Risk Level (RL)				
	Timeframe (T)	Likelihood (L)	Severity of Consequence (C)	Climate Resilience (S)	Very High	High	Medium	Low	Very low
<b>1</b>	Very Short (VS)	Very High (VH)	Catastrophic (CA)	Very Weak (WV)	100%	0	0	0	0
<b>2</b>	VS	VH	CA	Weak (W)	75%	25%	0	0	0
<b>3</b>	VS	VH	CA	Average (A)	72%	0	25%	0	0
...	...	...	...	...	...	...		...	...
<b>623</b>	Very Long (VL)	Very Low (VL)	Negligible (NE)	A	0	0	25%	0	75%
<b>624</b>	Very Long (VL)	Very Low (VL)	Negligible (NE)	Weak (W)	0	0	0	25%	75%
<b>625</b>	Very Long (VL)	Very Low (VL)	Negligible (NE)	Very Strong (VS)	0	0	0	0	100%

## Appendix C. The Background information of transport experts in the pilot study

Expert 1: Transport planner, AECOM UK  
 Expert 2: Policy maker, Leeds City Council  
 Expert 3: Transport planner, South Tyneside Council  
 Expert 4: Academic, University of Westminster  
 Expert 5: Head of highways, Ynys Mon Country Council  
 Expert 6: Transport engineers, North & Mid Wales Trunk Road Agent  
 Expert 7: Senior manager, Transport for Greater Manchester  
 Expert 8: Team leader, transport System Catapult

## Appendix D. Questionnaire results

**Table D1. Questionnaire results of climate risk analysis on UK roads by position**

Environmental driver due to climate change	Potential climate threat on the road	Position	Utility value	Ranking of risk level
Temperature increase	A1. Increased intensity of warm weather leads to pavement deterioration, including softening, traffic-related rutting,	<b>Engineer</b>	<b>0.56</b>	<b>17</b>
		<b>CEO</b>	<b>0.44</b>	<b>5</b>
		<b>Manager</b>	<b>0.53</b>	<b>14</b>
		<b>Academic</b>	<b>0.53</b>	<b>14</b>

	cracking, migration of liquid asphalt			
	A2. Heating and thermal expansion of bridges, buckling of joints of steel structure and paved surfaces	<b>Engineer</b>	<b>0.56</b>	<b>17</b>
		<b>CEO</b>	<b>0.54</b>	<b>15</b>
		<b>Manager</b>	<b>0.49</b>	<b>10</b>
		<b>Academic</b>	<b>0.50</b>	<b>11</b>
	A3. Traffic jams/alternative routing /accidents, increasing fuel consumption and CO2 emissions, delivery delays and consequential costs	<b>Engineer</b>	<b>0.40</b>	<b>2</b>
		<b>CEO</b>	<b>0.41</b>	<b>3</b>
		<b>Manager</b>	<b>0.40</b>	<b>2</b>
		<b>Academic</b>	<b>0.37</b>	<b>1</b>
Intense rainfall/flooding	B1. The road drainage cannot effectively remove water due to heavy rains, which results in poor or dangerous driving conditions	<b>Engineer</b>	<b>0.44</b>	<b>5</b>
		<b>CEO</b>	<b>0.44</b>	<b>5</b>
		<b>Manager</b>	<b>0.41</b>	<b>3</b>
		<b>Academic</b>	<b>0.43</b>	<b>4</b>
	B2. Rainfall events can cause rivers/watercourses to flood which damages bridges, culverts waterways and clearance, and scouring can ruin the foundation of bridges and culverts	<b>Engineer</b>	<b>0.45</b>	<b>6</b>
		<b>CEO</b>	<b>0.48</b>	<b>9</b>
		<b>Manager</b>	<b>0.41</b>	<b>3</b>
		<b>Academic</b>	<b>0.48</b>	<b>9</b>
	B3. Rainfall events result in landslides and mudslides in hilling roads, and cause roadblocks	<b>Engineer</b>	<b>0.48</b>	<b>9</b>
		<b>CEO</b>	<b>0.45</b>	<b>6</b>
		<b>Manager</b>	<b>0.40</b>	<b>2</b>
		<b>Academic</b>	<b>0.63</b>	<b>20</b>
	B4. The road may be inundated by flooding caused by adjacent drainage systems (rivers/public sewers) flooding which renders the road unusable	<b>Engineer</b>	<b>0.46</b>	<b>7</b>
		<b>CEO</b>	<b>0.43</b>	<b>4</b>
		<b>Manager</b>	<b>0.48</b>	<b>9</b>
		<b>Academic</b>	<b>0.66</b>	<b>22</b>
More intense and/or frequent high wind and/or storms	C1. Storm cyclone due to heavy rainfall and high wind can trigger flooding, inundation of embankments, affect road transport and stability of bridge decks	<b>Engineer</b>	<b>0.49</b>	<b>10</b>
		<b>CEO</b>	<b>0.47</b>	<b>8</b>
		<b>Manager</b>	<b>0.45</b>	<b>6</b>
		<b>Academic</b>	<b>0.56</b>	<b>17</b>
	C2. Disrupt traffic safety and emergency evacuation operations, damage to lighting fixtures and supports, traffic boards and information sign	<b>Engineer</b>	<b>0.47</b>	<b>8</b>
		<b>CEO</b>	<b>0.46</b>	<b>7</b>
		<b>Manager</b>	<b>0.51</b>	<b>12</b>
		<b>Academic</b>	<b>0.65</b>	<b>21</b>
	C3. High wind and storms can increase traffic accidents and affect road safety	<b>Engineer</b>	<b>0.51</b>	<b>12</b>
		<b>CEO</b>	<b>0.49</b>	<b>10</b>
		<b>Manager</b>	<b>0.46</b>	<b>7</b>
		<b>Academic</b>	<b>0.50</b>	<b>11</b>
SLR		<b>Engineer</b>	<b>0.52</b>	<b>13</b>



	D1. SLR can trigger inundation of coastal roads, extra demands on infrastructure when used as emergency/evacuation roads, and realign or abandon roads in threatened areas	<b>CEO</b>	<b>0.51</b>	<b>12</b>
		<b>Manager</b>	<b>0.45</b>	<b>6</b>
		<b>Academic</b>	<b>0.60</b>	<b>18</b>
	D2. SLR can deteriorate erosion of road base and bridge supports, cause bridge scour and pollution under bridges	<b>Engineer</b>	<b>0.52</b>	<b>13</b>
		<b>CEO</b>	<b>0.55</b>	<b>16</b>
		<b>Manager</b>	<b>0.48</b>	<b>9</b>
		<b>Academic</b>	<b>0.61</b>	<b>19</b>

**Table D2. Questionnaire results of climate risk analysis on UK railways by type of entity**

<b>Environmental driver due to climate change</b>	<b>Potential climate threat on the road</b>	<b>Type</b>	<b>Utility value</b>	<b>Ranking of risk level</b>
Temperature increase	A1. Increased intensity of warm weather leads to pavement deterioration, including softening, traffic-related rutting, cracking, migration of liquid asphalt	<b>Consulting</b>	<b>0.59</b>	<b>18</b>
		<b>NGO</b>	<b>0.42</b>	<b>5</b>
		<b>Transport Company</b>	<b>0.51</b>	<b>14</b>
		<b>Academia</b>	<b>0.55</b>	<b>16</b>
	A2. Heating and thermal expansion of bridges, buckling of joints of steel structure and paved surfaces	<b>Consulting</b>	<b>0.50</b>	<b>13</b>
		<b>NGO</b>	<b>0.44</b>	<b>7</b>
		<b>Transport Company</b>	<b>0.52</b>	<b>15</b>
		<b>Academia</b>	<b>0.50</b>	<b>13</b>
	A3. Traffic jams/alternative routing /accidents, increasing fuel consumption and CO2 emissions, delivery delays and consequential costs	<b>Consulting</b>	<b>0.39</b>	<b>2</b>
		<b>NGO</b>	<b>0.40</b>	<b>3</b>
		<b>Transport Company</b>	<b>0.52</b>	<b>15</b>
		<b>Academia</b>	<b>0.37</b>	<b>1</b>
Intense rainfall/flooding	B1. The road drainage cannot effectively remove water due to heavy rains, which results in poor or dangerous driving conditions	<b>Consulting</b>	<b>0.46</b>	<b>9</b>
		<b>NGO</b>	<b>0.37</b>	<b>1</b>
		<b>Transport Company</b>	<b>0.42</b>	<b>5</b>
		<b>Academia</b>	<b>0.43</b>	<b>6</b>
	B2. Rainfall events can cause rivers/watercourses to flood which damages bridges, culverts waterways and clearance, and scouring can ruin the foundation of bridges and culverts	<b>Consulting</b>	<b>0.46</b>	<b>9</b>
		<b>NGO</b>	<b>0.43</b>	<b>6</b>
		<b>Transport Company</b>	<b>0.43</b>	<b>6</b>
		<b>Academia</b>	<b>0.48</b>	<b>11</b>
	B3. Rainfall events result in landslides and mudslides in	<b>Consulting</b>	<b>0.45</b>	<b>8</b>
		<b>NGO</b>	<b>0.46</b>	<b>9</b>

	hilling roads, and cause roadblocks	<b>Transport Company</b>	<b>0.41</b>	<b>4</b>
		<b>Academia</b>	<b>0.63</b>	<b>20</b>
	B4. The road may be inundated by flooding caused by adjacent drainage systems (rivers/public sewers) flooding which renders the road unusable	<b>Consulting</b>	<b>0.47</b>	<b>10</b>
		<b>NGO</b>	<b>0.47</b>	<b>10</b>
		<b>Transport Company</b>	<b>0.48</b>	<b>11</b>
		<b>Academia</b>	<b>0.68</b>	<b>22</b>
More intense and/or frequent high wind and/or storms	C1. Storm cyclone due to heavy rainfall and high wind can trigger flooding, inundation of embankments, affect road transport and stability of bridge decks	<b>Consulting</b>	<b>0.50</b>	<b>13</b>
		<b>NGO</b>	<b>0.51</b>	<b>14</b>
		<b>Transport Company</b>	<b>0.49</b>	<b>12</b>
		<b>Academia</b>	<b>0.57</b>	<b>17</b>
	C2. Disrupt traffic safety and emergency evacuation operations, damage to lighting fixtures and supports, traffic boards and information sign	<b>Consulting</b>	<b>0.47</b>	<b>10</b>
		<b>NGO</b>	<b>0.50</b>	<b>13</b>
		<b>Transport Company</b>	<b>0.55</b>	<b>16</b>
		<b>Academia</b>	<b>0.65</b>	<b>21</b>
	C3. High wind and storms can increase traffic accidents and affect road safety	<b>Consulting</b>	<b>0.46</b>	<b>9</b>
		<b>NGO</b>	<b>0.51</b>	<b>14</b>
		<b>Transport Company</b>	<b>0.52</b>	<b>15</b>
		<b>Academia</b>	<b>0.50</b>	<b>13</b>
SLR	D1. SLR can trigger inundation of coastal roads, extra demands on infrastructure when used as emergency/evacuation roads, and realign or abandon roads in threatened areas	<b>Consulting</b>	<b>0.46</b>	<b>9</b>
		<b>NGO</b>	<b>0.50</b>	<b>13</b>
		<b>Transport Company</b>	<b>0.46</b>	<b>9</b>
		<b>Academia</b>	<b>0.60</b>	<b>19</b>
	D2. SLR can deteriorate erosion of road base and bridge supports, cause bridge scour, and pollution under bridges	<b>Consulting</b>	<b>0.52</b>	<b>15</b>
		<b>NGO</b>	<b>0.45</b>	<b>8</b>
		<b>Transport Company</b>	<b>0.52</b>	<b>15</b>
		<b>Academia</b>	<b>0.60</b>	<b>19</b>

**Table D3. Questionnaire results of climate risk analysis on UK railways by the scale of the entity**

<b>Environmental driver due to climate change</b>	<b>Potential climate threat on the railway</b>	<b>Scale</b>	<b>Utility value</b>	<b>Ranking of risk level</b>
---	--	--------------	----------------------	------------------------------

Temperature increase	A1. Increased intensity of warm weather leads to pavement deterioration, including softening, traffic-related rutting, cracking, migration of liquid asphalt	Large	0.53	13
		Middle	0.51	11
		Small	0.56	16
	A2. Heating and thermal expansion of bridges, buckling of joints of steel structure and paved surfaces	Large	0.46	6
		Middle	0.50	10
		Small	0.45	5
	A3. Traffic jams / alternative routing /accidents, increasing fuel consumption and CO2 emissions, delivery delays and consequential costs	Large	0.39	2
		Middle	0.37	1
		Small	0.54	14
Intense rainfall/flooding	B1. The road drainage cannot effectively remove water due to heavy rains, which results in poor or dangerous driving conditions	Large	0.45	5
		Middle	0.43	3
		Small	0.43	3
	B2. Rainfall events can cause rivers/watercourses to flood which damages bridges, culverts waterways and clearance, and scouring can ruin the foundation of bridges and culverts	Large	0.45	5
		Middle	0.43	3
		Small	0.46	6
	B3. Rainfall events result in landslides and mudslides in hilling roads, and cause roadblocks	Large	0.47	7
		Middle	0.54	14
		Small	0.44	4
	B4. The road may be inundated by flooding caused by adjacent drainage systems (rivers/public sewers) flooding which renders the road unusable	Large	0.45	5
		Middle	0.58	17
		Small	0.43	3
More intense and/or frequent high wind and/or storms	C1. Storm cyclone due to heavy rainfall and high wind can trigger flooding, inundation of embankments, affect road transport and stability of bridge decks	Large	0.47	7
		Middle	0.51	11
		Small	0.49	9
	C2. Disrupt traffic safety and emergency evacuation operations, damage to lighting fixtures and supports, traffic boards and information sign	Large	0.48	8
		Middle	0.58	17
		Small	0.50	10
		Large	0.47	7

	C3. High wind and storms can increase traffic accidents and affect road safety	<b>Middle</b>	<b>0.53</b>	<b>13</b>
		<b>Small</b>	<b>0.53</b>	<b>13</b>
SLR	D1. SLR can trigger inundation of coastal roads, extra demands on infrastructure when used as emergency/evacuation roads, and realign or abandon roads in threatened areas	<b>Large</b>	<b>0.49</b>	<b>9</b>
		<b>Middle</b>	<b>0.49</b>	<b>9</b>
		<b>Small</b>	<b>0.48</b>	<b>8</b>
	D2. SLR can deteriorate erosion of road base and bridge supports, cause bridge scour and pollution under bridges	<b>Large</b>	<b>0.52</b>	<b>12</b>
		<b>Middle</b>	<b>0.55</b>	<b>15</b>
		<b>Small</b>	<b>0.46</b>	<b>6</b>