

LJMU Research Online

Voisin, S, Harvey, NR, Haupt, LM, Griffiths, LR, Ashton, KJ, Coffey, VG, Doering, TM, Thompson, J-LM, Benedict, C, Cedernaes, J, Lindholm, ME, Craig, JM, Rowlands, DS, Sharples, AP, Horvath, S and Eynon, N

An epigenetic clock for human skeletal muscle.

<http://researchonline.ljmu.ac.uk/id/eprint/12343/>

Article

Citation (please note it is advisable to refer to the publisher's version if you intend to cite from this work)

Voisin, S, Harvey, NR, Haupt, LM, Griffiths, LR, Ashton, KJ, Coffey, VG, Doering, TM, Thompson, J-LM, Benedict, C, Cedernaes, J, Lindholm, ME, Craig, JM, Rowlands, DS, Sharples, AP, Horvath, S and Eynon, N (2020) An epigenetic clock for human skeletal muscle. Journal of Cachexia.


LJMU has developed **LJMU Research Online** for users to access the research output of the University more effectively. Copyright © and Moral Rights for the papers on this site are retained by the individual authors and/or other copyright owners. Users may download and/or print one copy of any article(s) in LJMU Research Online to facilitate their private study or for non-commercial research. You may not engage in further distribution of the material or use it for any profit-making activities or any commercial gain.

The version presented here may differ from the published version or from the version of the record. Please see the repository URL above for details on accessing the published version and note that access may require a subscription.

For more information please contact researchonline@ljmu.ac.uk

<http://researchonline.ljmu.ac.uk/>

An epigenetic clock for human skeletal muscle

Sarah Voisin^{1*} , Nicholas R. Harvey^{2,3}, Larisa M. Haupt³, Lyn R. Griffiths³, Kevin J. Ashton², Vernon G. Coffey², Thomas M. Doering^{2,4}, Jamie-Lee M. Thompson², Christian Benedict⁵, Jonathan Cedernaes⁶, Malene E. Lindholm⁷, Jeffrey M. Craig^{8,9}, David S. Rowlands¹⁰, Adam P. Sharples^{11,12}, Steve Horvath¹³ & Nir Eynon^{1*}

¹Institute for Health and Sport, Victoria University, Melbourne, Australia, ²Faculty of Health Sciences & Medicine, Bond University, Gold Coast, Australia, ³Genomics Research Centre, Institute of Health and Biomedical Innovation, School of Biomedical Sciences, Queensland University of Technology, Brisbane, Australia, ⁴School of Health, Medical and Applied Sciences, Central Queensland University, Rockhampton, Australia, ⁵Sleep Research Laboratory, Department of Neuroscience, Uppsala University, Uppsala, Sweden, ⁶Department of Medical Sciences, Uppsala University, Uppsala, Sweden, ⁷Department of Medicine, School of Medicine, Stanford University, Stanford, CA, USA, ⁸Centre for Molecular and Medical Research, Deakin University, Geelong, Australia, ⁹Epigenetics, Murdoch Children's Research Institute, Royal Children's Hospital, Melbourne, Australia, ¹⁰School of Sport, Exercise and Nutrition, Massey University, Wellington, New Zealand, ¹¹Department of Physical Performance, Norwegian School of Sport Sciences, Oslo, Norway, ¹²Stem Cells, Ageing and Molecular Physiology Unit, Exercise Metabolism and Adaptation Research Group, Research Institute for Sport and Exercise Sciences, Liverpool John Moores University, Liverpool, UK, ¹³Department of Human Genetics and Biostatistics, David Geffen School of Medicine, University of California Los Angeles, Los Angeles, CA, USA

Abstract

Background Ageing is associated with DNA methylation changes in all human tissues, and epigenetic markers can estimate chronological age based on DNA methylation patterns across tissues. However, the construction of the original pan-tissue epigenetic clock did not include skeletal muscle samples and hence exhibited a strong deviation between DNA methylation and chronological age in this tissue.

Methods To address this, we developed a more accurate, muscle-specific epigenetic clock based on the genome-wide DNA methylation data of 682 skeletal muscle samples from 12 independent datasets (18–89 years old, 22% women, 99% Caucasian), all generated with Illumina HumanMethylation (HM) arrays (HM27, HM450, or HMEPIC). We also took advantage of the large number of samples to conduct an epigenome-wide association study of age-associated DNA methylation patterns in skeletal muscle.

Results The newly developed clock uses 200 cytosine-phosphate–guanine dinucleotides to estimate chronological age in skeletal muscle, 16 of which are in common with the 353 cytosine-phosphate–guanine dinucleotides of the pan-tissue clock. The muscle clock outperformed the pan-tissue clock, with a median error of only 4.6 years across datasets (vs. 13.1 years for the pan-tissue clock, $P < 0.0001$) and an average correlation of $\rho = 0.62$ between actual and predicted age across datasets (vs. $\rho = 0.51$ for the pan-tissue clock). Lastly, we identified 180 differentially methylated regions with age in skeletal muscle at a false discovery rate < 0.005 . However, gene set enrichment analysis did not reveal any enrichment for gene ontologies.

Conclusions We have developed a muscle-specific epigenetic clock that predicts age with better accuracy than the pan-tissue clock. We implemented the muscle clock in an R package called *Muscle Epigenetic Age Test* available on BIOCONDUCTOR to estimate epigenetic age in skeletal muscle samples. This clock may prove valuable in assessing the impact of environmental factors, such as exercise and diet, on muscle-specific biological ageing processes.

Keywords Skeletal muscle; Epigenetic clock; Ageing; DNA methylation; Epigenetic age; Biological age

Received: 13 November 2019; Revised: 15 January 2020; Accepted: 30 January 2020

*Correspondence to: Dr Sarah Voisin, Institute for Health and Sport, Victoria University, Melbourne 8001, Australia. Phone: +61 466469673, Email: sarah.voisin@vu.edu.au. Associate Professor Nir Eynon, Institute for Health and Sport, Victoria University, Melbourne 8001, Australia. Phone: +61 399195615, Fax: +61 399199185, Email: nir.eynon@vu.edu.au

Introduction

Ageing is the normal, progressive decline of function occurring at the cellular, tissue and organismal levels over the lifespan.¹ Ageing increases susceptibility to a wide range of diseases, including cardiovascular and neurodegenerative diseases, metabolic disorders, and many cancers.¹ It is therefore important to identify early and potentially modifiable molecular mechanisms that occur with advancing age. Changes in epigenetic patterns constitute a primary hallmark of ageing in all tissues of the human body.² Epigenetic marks are cellular properties conferring the ability to remember a previous biological event,³ and some of these marks are sensitive to environmental stimuli such as diet, sleep,⁴ and exercise training.^{5,6} Epigenetic changes with age are particularly well characterised at the DNA methylation level,^{7,8} including skeletal muscle.⁹

The first DNA methylation-based estimator of chronological age (known as the pan-tissue *epigenetic clock*) was developed using a wide spectrum of tissues and nucleated cell types.⁷ The resulting regression model could then be used to estimate the chronological age of tissue samples based on the DNA methylation levels of 353 cytosine-phosphate-guanine dinucleotides (CpGs). The difference between estimated DNA methylation age and chronological age reflects not only technical noise but also biologically meaningful variation seen in epidemiological studies linking epigenetic ageing rates to mortality risk, Alzheimer's disease, and many age-related conditions.^{10,11} Age-related conditions are often associated with tissue-specific effects. For example, obesity is associated with strong epigenetic age acceleration in human liver samples but negligible effects in muscle tissue when assessed by the pan-tissue clock.¹²

Most tissues exhibit similar epigenetic ages according to the pan-tissue clock, but there are a few exceptions. For example, the cerebellum has been found to age more slowly.¹³ Conversely, female breast tissue exhibits an increased epigenetic ageing rate, especially in younger women.^{7,14} The construction of the original pan-tissue clock did not include any skeletal muscle samples. The only two skeletal muscle datasets included in the original study⁷ (GSE38291 and GSE36166) were not used as training but as test sets. Both datasets contained DNA methylation profiles generated with the Illumina HumanMethylation (HM)27 array on *vastus lateralis* muscle samples; GSE38291 included 11 pairs of monozygotic twins aged 53–80 years old and discordant for type 2 diabetes,¹⁵ while GSE36166 included 21 paired samples of young, healthy men (24.6 years old) whose biopsies were taken after a control diet and following a high-fat diet.¹⁶ When the pan-tissue clock was tested on these few skeletal muscle samples ($n = 66$), half of the samples' predicted age was off by more than 18 years.⁷ Therefore, there is currently

no epigenetic clock that performs well in skeletal muscle. While the pan-tissue clock has many applications, tissue-specific clocks developed exclusively in a given tissue, provide higher accuracy and specific application to specific tissues. In particular, blood tissue provides the opportunity to develop accurate predictors of lifespan and healthspan,^{17,18} which is particularly useful as blood samples are little invasive. Specific epigenetic clocks have been developed for fibroblasts, keratinocytes, buccal swabs,¹⁹ and for cord blood samples.²⁰ However, to the best of our knowledge, no study to date has tackled the challenge of developing an epigenetic clock that is specific to human skeletal muscle.

An epigenetic clock well calibrated in skeletal muscle could prove useful for studying the impact of environmental factors (e.g. exercise) on epigenetic ageing of this tissue and the relationship with health and disease processes.²¹ In general, skeletal muscle tissue is of great interest to ageing researchers and clinicians because skeletal muscle mass is lost at a rate of 0.5–1% per year after age 50.²² This muscle loss (sarcopenia) leads to a host of age-related complications including frailty, as well as increased morbidity and mortality.²³ At the same time, skeletal muscle loses mitochondrial function and becomes increasingly resistant to insulin with age.²⁴ However, skeletal muscle is remarkably plastic, which makes it a highly responsive target tissue for lifestyle.²⁴ For example, changes in DNA methylation that occur with a healthy diet²⁵ and exercise^{5,6} may be mechanistically involved in slowing down the ageing process.¹

In the current study, we aimed to address the poor performance of the pan-tissue clock in muscle by developing a muscle-specific epigenetic clock. We hypothesise that by using a large number of human skeletal muscle DNA methylation profiles, we can develop a muscle-specific epigenetic clock that outperforms the pan-tissue clock and that can estimate chronological age with high accuracy. We utilised DNA methylation data to estimate epigenetic age in a total of 682 male and female skeletal muscle samples aged 18–89. We also conducted an epigenome-wide association study (EWAS) to discover genes whose methylation change with age in skeletal muscle. We have made the muscle clock freely available in an R package called *MEAT* (*Muscle Epigenetic Age Test*) on BIOCONDUCTOR.

Methods

Description of datasets used

We combined three datasets of DNA methylation in skeletal muscle [the Gene Skeletal Muscle Adaptive Response

to Training,²⁶ the E-MTAB-6908 study,⁴ and the Bond University Limb Immobilisation and Transcriptional/Epigenetic Responses (LITER) study (unpublished)], with human skeletal muscle DNA methylation data from the open-access Gene Expression Omnibus (GEO) platform and the database of Genotypes and Phenotypes. We excluded datasets with <3 samples, missing information on age (i.e. no age information on the GEO and corresponding author unresponsive), and datasets from primary cell culture experiments. Overall, we identified eight datasets on the GEO and one dataset on database of Genotypes and Phenotypes (Supporting Information Data S1), with sample sizes ranging from $n = 3$ to $n = 282$. Eight datasets were paired designs (e.g. monozygotic twins discordant for disease or pre-/post-interventions) and four cross-sectional. We described each dataset in details in the Supporting Information.

Pre-processing

Whenever possible (i.e. when we had information on P value detection for each probe, raw methylated and unmethylated signals or IDAT files, and batch/position information for each sample), we downloaded and pre-processed the raw data. If we did not have enough information on a given dataset (e.g. missing batch information), we utilised the processed data available on the GEO. In datasets that we did not pre-process, missing data was imputed using the `champ.impute` function of the *ChAMP* package,²⁷ with default parameters. As quality control, we ensured all datasets had a mean inter-correlation >0.97 and a maximum beta-value >0.99. For each individual dataset we pre-processed, we applied the following pre-processing steps using the R statistical software (www.r-project.org) together with the *ChAMP* analysis pipeline²⁷ (for a full description of pre-processing steps on each dataset, see *Data S2*):

Any sample with >10% of probes with detection P value >0.01 was removed (default parameter of the `champ.load` function). All probes with missing β -values, with a detection P value >0.01, probes with a bead count <3 in at least 5% of samples, and non-CG probes and probes aligning to multiple locations were removed, and for datasets containing men and women, probes located on the sex chromosomes were removed. SNP-related probes ("EUR" population probes in Zhou *et al.*²⁸) were also removed. β -values were obtained and defined as

Then, a β -mixture quantile normalisation method was applied to adjust for the Type I and Type II probe designs for methylation profiles generated from the HM450 and HMEPIC arrays. To identify technical and biological sources of variation in each individual dataset, singular value decomposition was performed. In all pre-processed datasets, both the plate and the position on the plate were identified as significant technical effects. Thus, all β -values were converted to M -values, and the `ComBat` function from the *sva* package used to adjust directly for these technical artefacts.

Only 19 401 CpGs were identified to be in common between the 12 datasets after pre-processing, and all probes found on the HM27, HM450, and HMEPIC arrays (*Data S3*). To obtain DNA methylation profiles that were comparable between datasets, we adopted Horvath's calibration method. We calibrated 11 or the 12 datasets to a gold standard, using the adapted version of the β -mixture quantile normalisation algorithm.⁷ We used GSE50498 as the gold standard because it was a large dataset ($n = 48$ samples) with the broadest age range (18–89 years old).

Muscle clock development

We analysed 12 DNA methylation datasets from human skeletal muscle for which chronological age was available. We developed the muscle clock using an elastic net regression model identical to Horvath's where a transformed version of chronological age was regressed on the 19 401 CpGs.⁷ We first performed 10-fold cross-validation to select the optimal regularisation parameter λ , using the elastic-net mixing parameter $\alpha = 0.5$.

Given the limited number of datasets and the biased age distribution in each dataset, we adopted a leave-one-dataset-out cross-validation procedure to obtain an unbiased estimate of the muscle clock accuracy. We then calculated the prediction error as the age acceleration (AA), using two definitions that have been previously described^{7,29}: the difference between predicted and actual age (AA_{diff}) and the residual from a linear regression of predicted age against actual age (AA_{resid}) (*Figure 1*). While AA_{diff} is a straightforward way of calculating the error in age prediction, it is sensitive to the mean age of the dataset⁷ and to the pre-processing of the DNA methylation dataset²⁹; AA_{diff} can be biased upwards or downwards depending on how the dataset was normalised and depending on the mean age and age variance of the dataset. In contrast, AA_{resid} is insensitive to the mean age of the dataset and is robust against different pre-processing

$$\beta - \text{value} = \frac{\text{intensity of the methylated allele}}{\text{intensity of the unmethylated allele} + \text{intensity of the methylated allele} + 100}$$

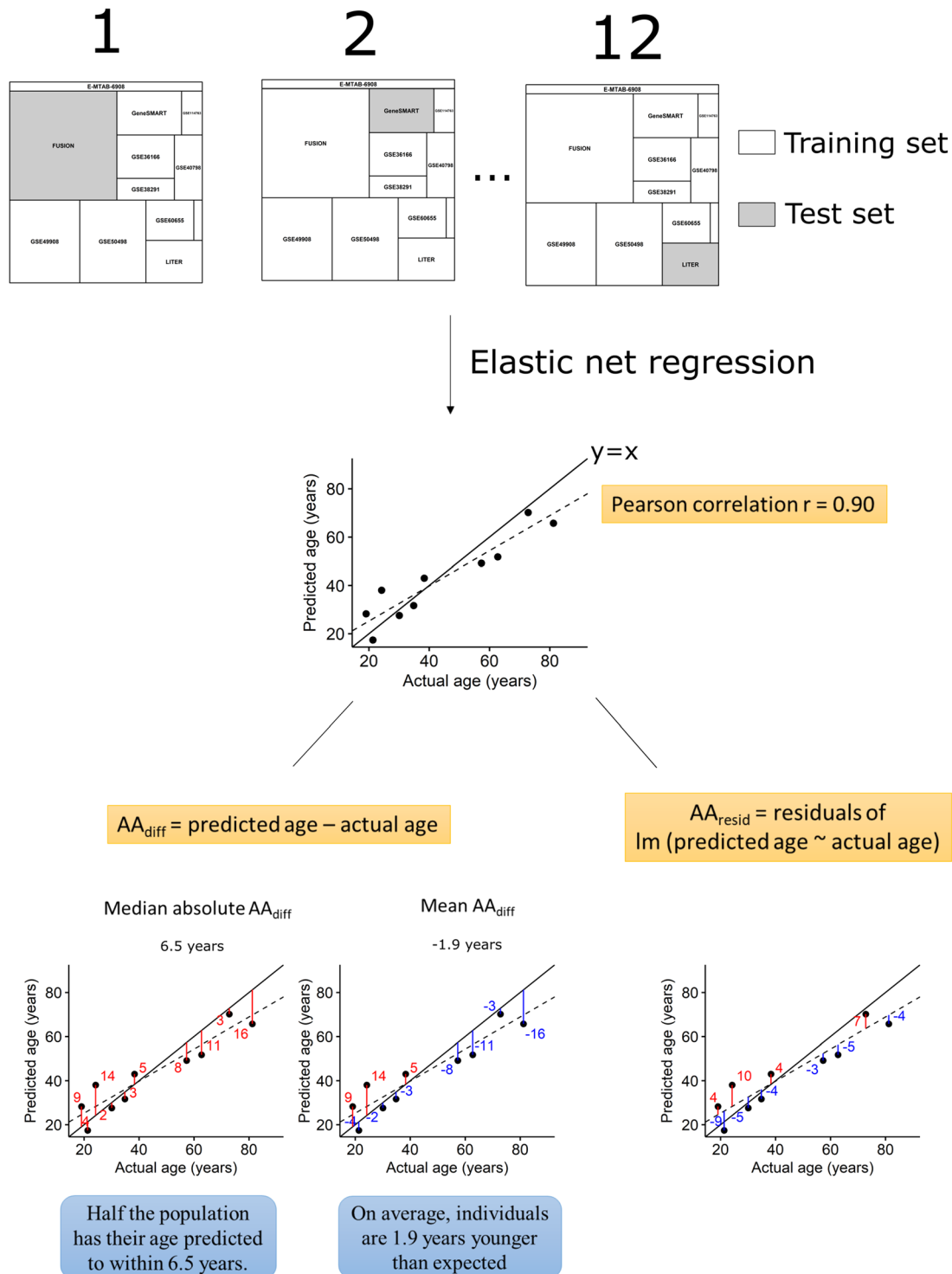


Figure 1 Methodology for leave-one dataset-out cross-validation (LOOCV) and measures of age prediction accuracy. In the LOOCV, one dataset is left out (test set) and all other datasets (training sets) are used to develop the age predictor. The DNA methylation profiles of the training sets are input into an elastic net regression model (*glmnet* package in R), and this model is then used to estimate age in the test set. Predicted and actual age were correlated using Pearson's correlation coefficient (unless all individuals had the same age or the dataset was too small). We also calculated the AA_{diff} as the difference between predicted and actual age. We then calculated the median of the absolute values of AA_{diff} to estimate how well calibrated the clock was to this particular test set, and we calculated the mean of AA_{diff} to see whether the test set as a whole was younger (or older) than expected. Finally, we calculated the residuals from a linear regression of predicted age against actual age (AA_{resid}) to obtain accuracy measures insensitive to the mean age of the dataset and to pre-processing techniques.

methods.²⁹ Finally, we also calculated the Pearson correlation between predicted and actual age of the sample cohorts.

Pan-tissue clock

We used the online epigenetic age calculator (<https://dnamage.genetics.ucla.edu/home>) selecting the option “Normalized Data” to implement the original pan-tissue clock.⁷

Statistics

We used a paired *t*-test on the absolute AA (AA_{diff} or AA_{resid}) to compare the accuracy of the muscle clock with that of the pan-tissue clock. As recently suggested to improve replicability in science,³⁰ a *P* value <0.005 was deemed significant.

To identify age-associated methylation positions (DMPs), we used linear models and moderated Bayesian statistics as implemented in the *limma* package.³¹ The DNA methylation levels at 19 401 CpGs from the *n* = 682 muscle samples were regressed against age, sex, and dataset ID. We used the block design as implemented in *LMFIT* to account for the paired designs of some datasets. DMPs associated with age at a false discovery rate (FDR) < 0.005 were deemed significant.^{30,32} To identify differentially methylated regions (DMRs, i.e. clusters of DMPs with consistent DNA methylation change with age), we used the *dmrcate* package.³³

To identify age-associated GO terms, we conducted a gene set enrichment analysis as implemented in the *gometh* function of the *missMethyl* package,³⁴ using our own improved annotation of the epigenome and largely based on Zhou *et al.*'s annotation.²⁸ This function accounts for the biased distribution of CpGs in genes. All GO terms pathways at FDR < 0.005 were deemed significant.^{30,32}

To test whether the clock CpGs showed any enrichment inside or outside CpG islands, or enrichment for specific chromatin states, we compared the distribution of the clock CpGs with that of all other CpGs in different CpG island domains (open sea, CpG island, CpG island shore, and CpG island shelf) or chromatin states in male skeletal muscle from the Roadmap Epigenomics Project with a Fisher's exact test. As there are four different positions with respect to CpG islands and 15 different chromatin states, we only considered positions with respect to CpG islands and chromatin states significant if FDR < 0.005.

Results

Description of the 12 skeletal muscle DNA methylation datasets

We gathered skeletal muscle methylomes from 12 datasets generated with three different platforms: HM27, HM450

and the more recent HMEPIC, totalling *n* = 682 samples (Figure 2, Data S1). Three datasets came from our own lab or collaborators, and the other nine were publicly available on the GEO platform or the database of Genotypes and Phenotypes. Only three datasets included women, and only two datasets included non-Caucasian individuals. Eight of the 12 datasets were paired designs (e.g. monozygotic twins discordant for disease or pre-/post-interventions, Data S1), meaning that some of the 682 muscle samples were taken from healthy individuals at baseline or after a control diet, while other samples were taken after an exercise intervention, a high-fat diet, sleep deprivation, insulin stimulation, or were from individuals with type 2 diabetes. We chose to keep all samples in the development of the muscle clock, as none of these factors were associated with drastic changes in age acceleration. For details on each individual dataset such as sample collection and DNA methylation assay, see Data S2.

The 682 samples had a bimodal distribution of age, with an under-representation of 30–50 year olds (*n* = 242 aged 18–30, *n* = 105 aged 30–50, *n* = 275 aged 50–70, *n* = 60 aged 70–90, Figure 2). More importantly, datasets greatly differed in their mean age and age range (Figure 2, Data S1). For example, dataset GSE50498 contained younger (21.3 ± 2.4 years old) and older (73.2 ± 4.6 years old) but no middle-aged individuals; GSE36166 and GSE40798 had no variability in age, as all individuals were 24–25 years old.

Development of a highly accurate skeletal muscle epigenetic clock

To develop the muscle clock, we adopted the same approach as Horvath.⁷ Briefly, we restricted our analysis to the 19 401 CpGs that were present in all 12 datasets. Then, we used dataset GSE50498 that had a large sample size (*n* = 48), and the broadest age range (18–89 years old), as a gold standard to calibrate all other datasets. Although it does not entirely remove variability from different labs and platforms, this step allows for a harmonisation of DNA methylation profiles between datasets. Then, a transformed version of chronological age was regressed on the 19 401 CpGs using a penalised regression model (elastic net).

The elastic net model automatically selected 200 CpGs; with increasing age, 109 were hypomethylated and 91 hypermethylated (Data S4). Sixteen were in common with the 353 CpGs used in the pan-tissue clock (Figure 3a). This is more than expected by chance, as none of the 1 000 000 randomly drawn samples of 200 CpGs from our dataset had more than 14 CpGs in common with the 353 CpGs of the pan-tissue clock. In addition, the effect of age on the methylation levels of 15/16 of these common CpGs was the same in both clocks. This shows that the muscle clock includes some CpGs whose methylation changes with age in all human tissues. We then tested for enrichment of the 200 muscle clock CpGs in CpG

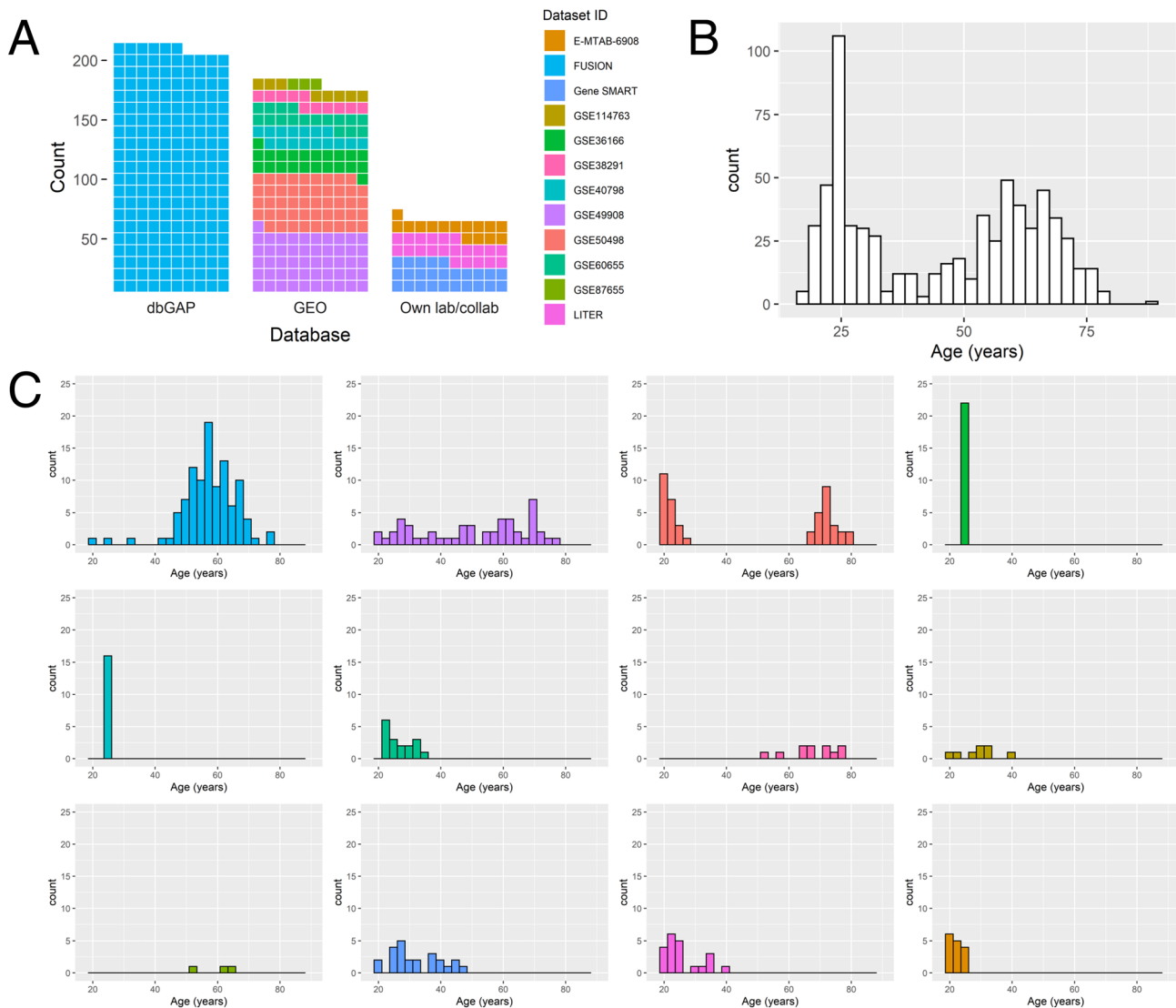


Figure 2 Age distribution in the 12 datasets used to develop the muscle clock. (A) Waffle chart of the 12 datasets, split by database. Each cell represents 1 percentage point summing up to the total number of samples ($n = 682$); dbGAP, database of Genotypes and Phenotypes; FUSION, Finland-United States Investigation of NIDDM Genetics; GEO, Gene Expression Omnibus; LITER, Limb Immobilisation and Transcriptional/Epigenetic Responses; Gene SMART, Gene Skeletal Muscle Adaptive Response to Training. (B) Age distribution in all 12 datasets pooled together ($n = 682$). (C) Age distribution in each individual dataset. Datasets were colour-coded as in the waffle chart (A).

islands and in skeletal muscle chromatin states. These chromatin states were determined by the Roadmap Epigenomics Project and provide a powerful, accurate mapping of gene and enhancer activity in human skeletal muscle at individual genomic positions. While we did not find any enrichment in CpG islands, shores, or shelves, the muscle clock CpGs that were hypomethylated with age showed depletion in regions flanking active promoters (FDR = 0.00085, Figure 3B).

The muscle clock outperforms the pan-tissue clock

As the number of datasets and samples were rather limited (around six times fewer samples than those used to develop

the pan-tissue clock), we adopted a leave-one dataset-out-cross-validation (LOOCV) procedure to obtain unbiased estimates of the muscle clock accuracy.⁷ LOOCV is performed by removing one dataset and developing the clock on the 11 remaining datasets; the omitted dataset is then used as a test set (Figure 1). Because we had 12 available datasets, we performed 12 LOOCVs (one for each dataset); this is better than performing a leave-one *sample*-out cross-validation procedure where the samples used to develop the clock contain samples from the same dataset as the omitted sample. This could lead to overly accurate age estimation, and would not apply well to new datasets. We then calculated three measures of accuracy: the correlation between predicted and actual age, the differ-

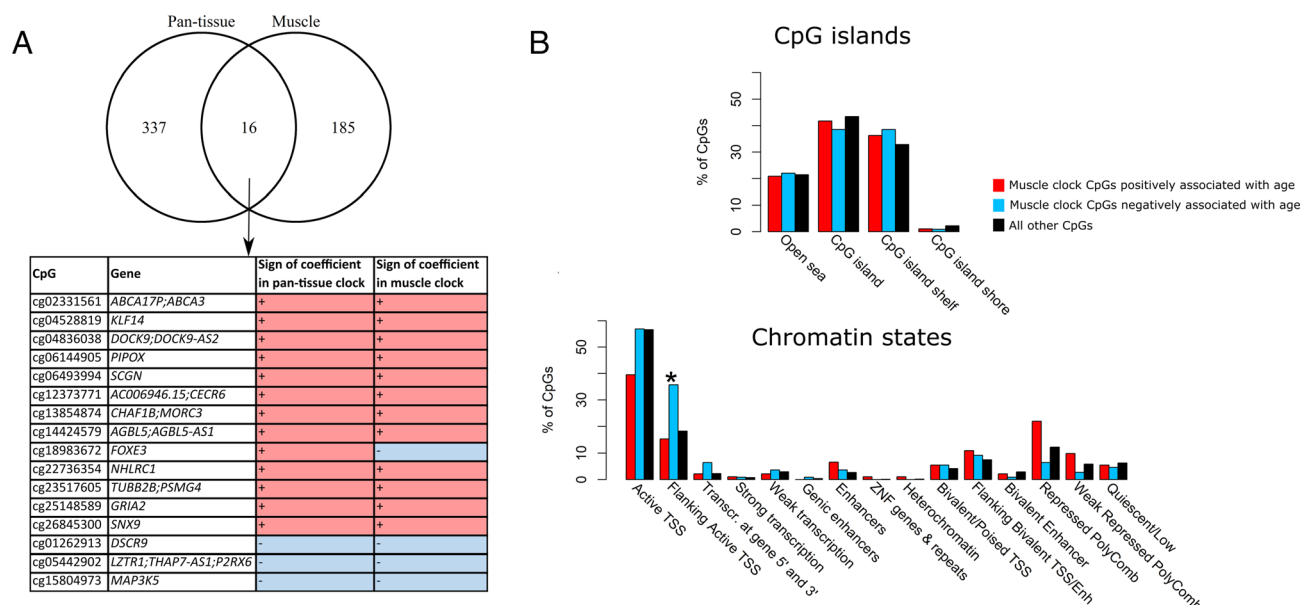


Figure 3 The 200 muscle clock CpGs. (A) Overlap between the 353 CpGs of the pan-tissue clock and the 200 CpGs of the muscle clock. The 16 CpGs in common between the two clocks are displayed as table, with the annotated gene(s), and the direction of methylation with age in each of the two clocks. (B) Enrichment of the 200 muscle clock CpGs in positions with respect to CpG islands (top) and in chromatin (bottom). Enrichment was tested with a Fisher's exact test, adjusted for multiple testing. * False discovery rate < 0.005. CpG, cytosine-phosphate-guanine dinucleotide; TSS, TssAflnk; ZNF, zinc-finger proteins.

ence between predicted and actual age (AA_{diff}), and the residual from a linear regression of predicted age against actual age (AA_{resid}) (Figure 1).

The skeletal muscle clock significantly outperformed the pan-tissue clock on the correlation between predicted and actual age (average $\rho = 0.62$ vs. $\rho = 0.51$ across datasets, Figure 4A, Data S5), and on the absolute AA_{diff} by 7.0 years (paired t -test $P < 0.0001$, Figure 4B left panel, Data S5); however, the muscle clock was as accurate as the pan-tissue clock on the absolute AA_{resid} (paired t -test $P = 0.16$, Figure 4B right panel, Data S5). We also estimated the accuracy of the muscle clock by calculating the median absolute error and the average difference between predicted age and chronological age for each dataset.⁷ While the median absolute error is a robust measure of prediction error, the average difference indicates whether the predicted age of a given dataset is consistently higher (or lower) than expected⁷ (Figure 1). Across the 12 datasets, the muscle clock performed very well, with a median absolute AA_{diff} of only 4.6 years on average (range 2.4–10.6 years) vs. 12.0 years for the pan-tissue clock, and a median absolute AA_{resid} of 3.4 years on average vs. 2.7 years for the pan-tissue clock (Data S5). Unsurprisingly, considering the biased age distribution between and within datasets (Figure 2, Data S1), both the muscle and pan-tissue clocks tended to predict younger ages for older individuals using AA_{diff} (Figure 5). However, this bias was significantly reduced in the muscle clock and was inexistent for AA_{resid} because by definition, AA_{resid} is unrelated to age.

Epigenome-wide association study of age

We took advantage of the large number of samples to explore DNA methylation patterns associated with age in skeletal muscle. We found 1,975 age-associated Differentially Methylated Positions (DMPs), corresponding to 180 Differentially Methylated Regions (DMRs) at FDR < 0.005 (Figure 6A, Data S6). The direction of DNA methylation with age was balanced, with 51% of DMRs hypomethylated and 49% hypermethylated with advancing age (Data S6). 60% of the muscle clock CpGs were among the age-associated DMPs; one of these DMPs, located in Pipecolic Acid And Sarcosine Oxidase (PIPOX), was both in the muscle and pan-tissue clocks and showed one of the largest effect sizes (DNA methylation increased by 2.8% per decade of age, Fig 6b, Data S6). Both hypo- and hypermethylated DMPs were depleted in CpG islands and active TSS while simultaneously enriched in CpG island shelves, open sea, actively transcribed regions and enhancers (Figure 6C). However, while hypomethylated DMPs were enriched in regions flanking active TSS and depleted in bivalent/poised TSS and in regions flanking bivalent TSS/enhancers, hypermethylated DMPs showed the opposite pattern (Figure 6C). We then conducted a gene set enrichment analysis that takes into account the biased distribution of CpGs in genes, but found no enrichment of the DMPs for particular gene ontologies (GO) at FDR < 0.005.

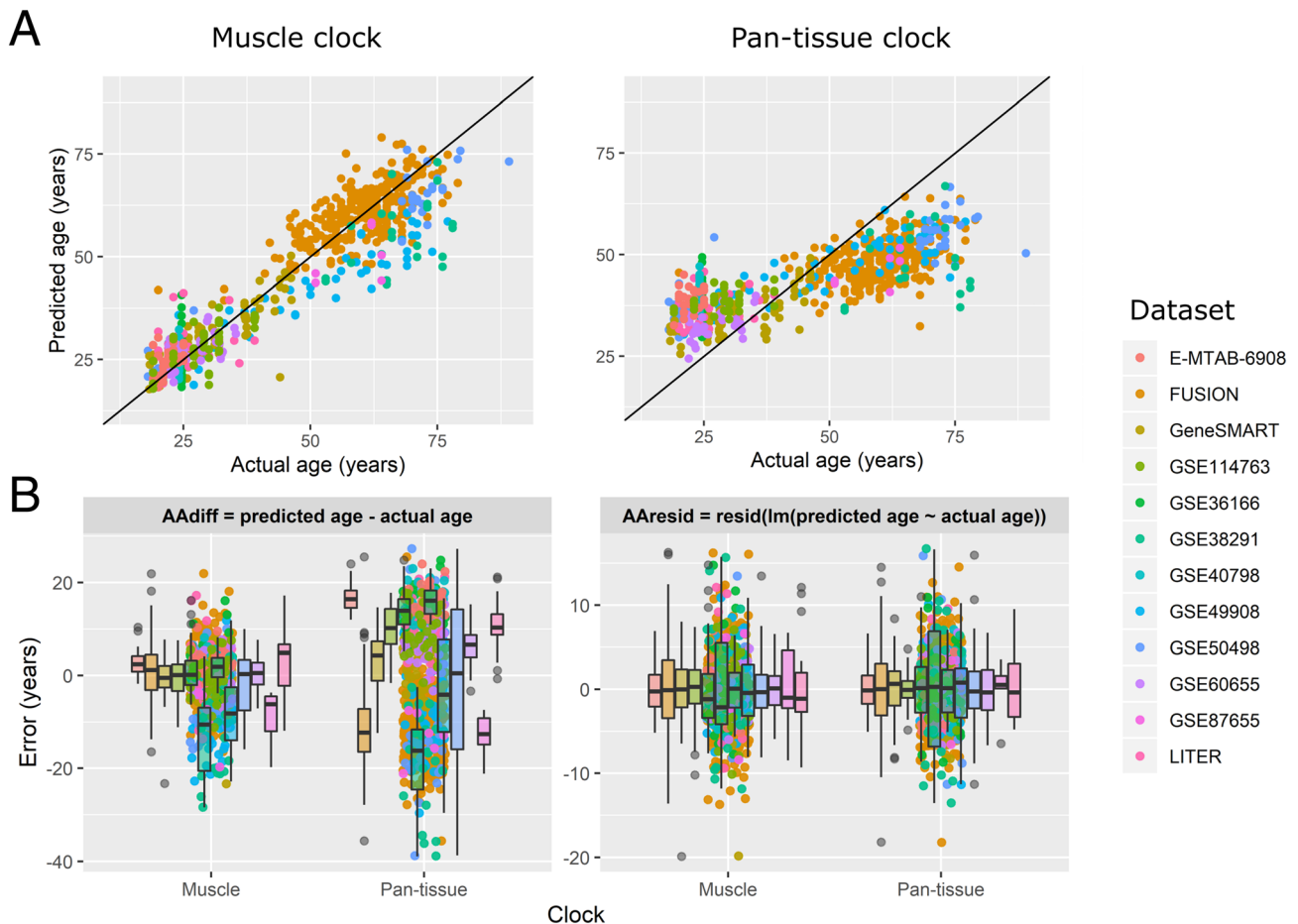


Figure 4 Predicted vs. actual age and errors in age prediction in the LOOCV procedure. Each point corresponds to one of the 682 samples, coloured by datasets to which they belong. (A) Predicted vs. actual age. Note that to obtain truly unbiased estimates of age prediction accuracy, the age predicted by the muscle clock is from the leave-one-out cross-validation procedure. (B) Error in age prediction either as the difference between predicted and actual age (left panel) or as the residuals from a linear model of predicted against actual age (right panel). Note that both panels are on different scales. FUSION, Finland-United States Investigation of NIDDM Genetics; LITER, Limb Immobilisation and Transcriptional/Epigenetic Responses; Gene SMART, Gene Skeletal Muscle Adaptive Response to Training.

Muscle Epigenetic Age Test: an R package to determine the epigenetic age of skeletal muscle

As part of the current investigation, we developed an open-access R package called MEAT, available on GitHub (<https://github.com/sarah-voisin/MEAT>). MEAT uses DNA methylation profiles generated in skeletal muscle with Illumina HM technology (HM27, HM450, and HMEPIC) to infer epigenetic age of the samples. MEAT uses R code adapted from Horvath⁷ to calibrate skeletal muscle DNA methylation profiles to the GSE50498 gold standard. MEAT then calculates the epigenetic age of the calibrated samples using the muscle clock (elastic net model as implemented in *glmnet*). Users should provide a pre-processed β -value matrix generated with the Illumina HumanMethylation platform, as well as an optional phenotype table containing information such as age, sex, health/disease status, and so forth. If age is provided, the package will not only estimate epigenetic age,

but also age acceleration (AA_{diff} and AA_{resid}). Users can also ask MEAT to fit standard or robust linear models to test associations between phenotypes of interest (e.g. sex) and age acceleration in their datasets.

Discussion

In the present study, we developed an accurate epigenetic clock, specific to skeletal muscle, which outperformed the pan-tissue clock by an average of ~7 years across 682 samples, in 12 independent datasets. This clock uses DNA methylation levels at 200 CpGs to predict chronological age, with a median absolute error of only 4.6 years, a significant improvement compared with the pan-tissue clock (12.0 years). We have made this clock available as an open-access R package called MEAT and available on GitHub (<https://github.com/sarah-voisin/MEAT>). MEAT takes DNA methylation



Figure 5 Age acceleration as a function of age in the muscle and the pan-tissue clocks. Here, we show the bias in age prediction depending on the age of the individual. Using the difference between predicted and actual age (AA_{diff}), younger individuals show systematically epigenetic ages than their real age, while older individuals show systematically older epigenetic ages than their real age. However, this bias is less pronounced in the muscle clock and inexistent when using AA_{resid} . FUSION, Finland-United States Investigation of NIDDM Genetics; LITER, Limb Immobilisation and Transcriptional/Epigenetic Responses; Gene SMART, Gene Skeletal Muscle Adaptive Response to Training.

profiles assessed with the Illumina Infinium technology as input and outputs predicted age. This tool allows researchers to study the impact of environmental factors (e.g., exercise training, bed rest/immobilisation, diet, etc.) on the rate of ageing in skeletal muscle samples. It could also be used to test whether diseased populations exhibit accelerated muscle-specific age acceleration compared with a matched healthy population, as was previously done using the pan-tissue clock.^{12,35–37}

We highlighted some important limitations in age distribution both within and between datasets that could influence the accuracy of the muscle clock. Despite these limitations, the accuracy of the age predictor was excellent. The remarkable accuracy in prediction can be explained by multiple factors, most of which previously mentioned by Horvath.⁷ First, the largest datasets (GSE50498, GSE49908, Gene Skeletal Muscle Adaptive Response to Training, and FUSION (Finland-United States Investigation of NIDDM Genetics)) were also those with the broadest age range, which limits the confounding effect of age with dataset. Second, measurements from Illumina DNA methylation arrays are known to be less affected by normalisation issues compared with those from gene expression (messenger RNA) arrays. Third, the elastic net model used to develop the epigenetic clock automatically selects

CpGs that are less sensitive to differences in cohorts, labs, and platforms because it is trained on datasets from various cohorts, labs, and platforms. Fourth, the relatively large number of datasets helps average out spurious results and artefacts. Lastly, age affects DNA methylation levels of tens of thousands of CpGs.⁹

We found that there were more CpGs in common between the muscle- and pan-tissue clock⁷ than what would be expected by chance (as determined by our random sampling test). This suggests that the ageing process, despite being associated with many tissue-specific DNA methylation changes, is also associated with DNA methylation changes ubiquitous to all human cell types. The epigenome-wide association study of age in skeletal muscle uncovered many genes whose methylation change with age. However, these genes were mostly distinct from the genes that are known to be differentially expressed in muscle with age.³⁸ Our relatively large sample size and wide age range allowed us to detect small effect sizes and to uncover a large number of genes differentially methylated with ageing in skeletal muscle. It is possible that age affects DNA methylation levels at these CpGs in all muscle cells. However, it is also possible that the DNA methylation differences between young and old individuals are because of differences in fibre type distribution and perhaps also

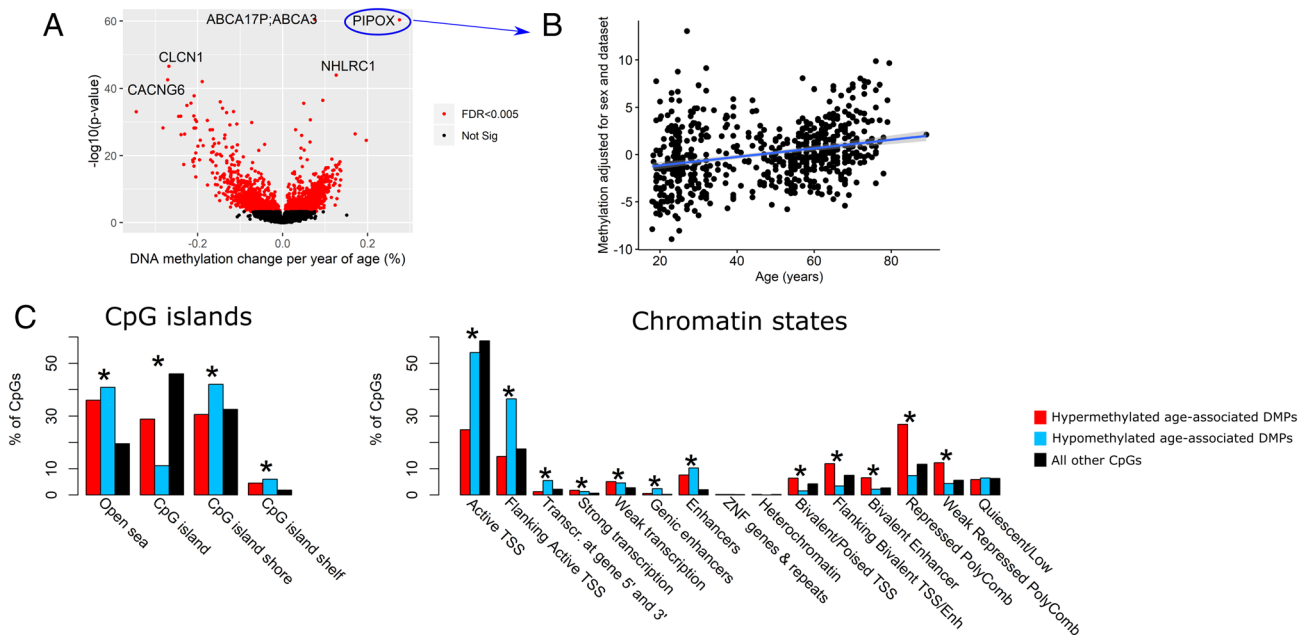


Figure 6 Differential DNA methylation with age in skeletal muscle. (A) Volcano plot of DNA methylation changes with age. Each point represents a tested CpG (19 401 in total) and those highlighted in red were the differentially methylated positions (DMPs) significant at a false discovery rate (FDR) < 0.005. The x axis represents effect size, expressed as differential methylation per year of age. The y axis represents statistical significance, expressed as $-\log_{10}(P \text{ value})$, so CpGs that are higher on the graph are more significant. (B) DNA methylation level as a function of age, for the CpG in *PIPOX* that was in both the muscle and pan-tissue clocks and that showed one of the largest effect size. (C) Enrichment of DMPs in positions with respect to CpG islands (left), and in chromatin states (right). Enrichment was tested with a Fisher's exact test, adjusted for multiple testing. *FDR < 0.005. CpG, cytosine-phosphate-guanine dinucleotide; TSS, TssAFlnk; ZNF, zinc-finger proteins.

differences in satellite cell number and profiles. Slow- and fast-twitch fibres have distinct DNA methylation profiles,³⁹ and older muscle tends to have a greater proportion of slow-twitch fibres than young muscle.⁴⁰ In addition, satellite cells maintain their multipotent state via distinct DNA methylation profiles,⁴¹ and both satellite cell numbers⁴² and DNA methylation profile⁴³ change with age. The strength of this study lies in the utilisation of datasets that contained both young and older individuals from the general population; thus, it is likely that the muscle clock captured these DNA methylation changes because of fibre type changes with age. It was recently shown that controlling for heterogeneity in tissue/muscle fibre type reduces the number of physiological trait associations,⁴⁴ and it may also be the case that the epigenetic clock developed herein predicts different ages in different fibre types of a given individual. This uncertainty surrounding the influence of different cell types on epigenetic age does not pertain to skeletal muscle and is also a challenge for virtually all epigenetic clocks, as highlighted in a recent, very comprehensive review.⁴⁵ This matter is further complicated for skeletal muscle, as different muscle groups show varied proportion of fibre types⁴⁶ (e.g. ~80% of Type I fibres for the *soleus* vs. 39% for the *biceps brachii*). It should be noted that the muscle clock developed herein used DNA methylation profiles exclusively from the vastus lateralis muscle. It is unknown whether the muscle clock performs well on samples

collected from other muscle groups, such as abdominal muscle collected during surgery. Uncovering which DNA methylation patterns change with age in fast-twitch fibres, slow-twitch fibres, or in both fibres would be the next step to further enhance precision in the estimate of muscle age and in understanding how age affects muscle structure and function.

Skeletal muscle follows a circadian rhythm whose phase can be changed by environmental cues such as food, exercise, and sleep.⁴⁷ Importantly, epigenetic mechanisms are involved in circadian rhythms, and some DNA methylation oscillations were recently shown to happen at the same CpG sites that show age-related DNA methylation shifts in mice.⁴⁸ In the datasets we used to develop the muscle clock, most biopsies were taken in the morning in a fasted state, following a control diet for >24 h and exercise restriction for >48 h, which limits short-term environmental influences on DNA methylation levels. However, some datasets containing middle-aged and older individuals (GSE49908 and GSE38291) did not have information on the conditions surrounding biopsy collection, so there is the possibility that some of these oscillations in DNA methylation are confounded with age in these datasets. We foresee that as more DNA methylation profiles in skeletal muscle are generated under controlled conditions and become publicly available, the muscle clock will be updated and gain in precision.

Conclusions

In conclusion, we have developed an advanced muscle-specific epigenetic clock, using all known available datasets. This clock is freely available on GitHub (<https://github.com/sarah-voisin/MEAT>) as an R package (MEAT) for the scientific community to calculate epigenetic age in their samples interrogated with the Illumina HM technology (HM27, HM450, and HMEPIC). This new clock significantly outperforms the previous pan-tissue clock and can calculate the epigenetic age in skeletal muscle with a mean accuracy of 4.9 ± 4.5 years across 682 samples. This muscle clock will be of interest and potential use to researchers, clinicians, and forensic scientists working in the fields of skeletal muscle, chronic diseases, and ageing. In the future, we intend to evaluate how environmental factors, such as exercise and diet, could influence ageing via this newly developed clock.

Acknowledgements

This work was supported by Sarah Voisin's National Health and Medical Research Council Early Career Research Fellowship (APP11577321) and by Nir Eynon's National Health and Medical Research Council Career Development Fellowship (APP1140644). The Gene Skeletal Muscle Adaptive Response to Training and LITER studies were both supported by the Collaborative Research Network for Advancing Exercise and Sports Science (201202) from the Department of Education and Training, Australia. Mr Nicholas Harvey was supported by a PhD stipend also provided by Bond University Collaborative Research Network for Advancing Exercise & Sports Science. This research was also supported by infrastructure purchased with Australian Government Education Investment Fund Super Science Funds as part of the Therapeutic Innovation Australia—Queensland Node project. We also greatly acknowledge Erika Guzman at the Australian Translational Genomics Centre/Institute for Health and Biomedical Innovation/Queensland University of Technology for performing the HMEPIC assays in the LITER study. We would also like to acknowledge Matthew McKenzie at Deakin University for coming up with the MEAT acronym. The authors adhere to the ethical guidelines for publishing in the *Journal of Cachexia, Sarcopenia and Muscle*.⁴⁹

References

- Benayoun BA, Pollina EA, Brunet A. Epigenetic regulation of ageing: linking environmental inputs to genomic stability. *Nat Rev Mol Cell Biol* 2015;**16**:593–610.
- López-Otín C, Blasco MA, Partridge L, Serrano M, Kroemer G. The hallmarks of ageing. *Cell* 2017;**153**:1194–1217.
- Lappalainen T, Grealley JM. Associating cellular epigenetic models with human phenotypes. *Nat Rev Genet* 2017;**18**:441–451.
- Cedernaes J, Schonke M, Westholm JO, Mi J, Chibalin A, Voisin S, et al. Acute sleep loss results in tissue-specific alterations in genome-wide DNA methylation state and metabolic fuel utilization in humans. *Sci Adv* 2018;**4**:eaar8590.
- Voisin S, Eynon N, Yan X, Bishop DJ. Exercise training and DNA methylation in humans. *Acta Physiol* 2015;**213**:39–59.
- Jacques M, Hiam D, Craig J, Barres R, Eynon N, Voisin S. Epigenetic changes in healthy

Online supplementary material

Additional supporting information may be found online in the Supporting Information section at the end of the article.

Data S1. Additional file 1. Overview of the 12 datasets of DNA methylation in skeletal muscle.

Data S2. Additional file 2. Detailed description of the 12 datasets of DNA methylation in skeletal muscle.

Data S3. Additional file 3. Genomic location and annotated genes for the 19,401 CpGs in common between all 12 datasets of DNA methylation in skeletal muscle.

Data S4. Additional file 4. Detailed information on the 200 CpGs automatically selected by the elastic net model. Coefficient = coefficient in the elastic net model. Each CpG was annotated to one or more genes using the annotation file from Zhou *et al.*²⁸ to which we added annotation to long-range interaction promoters using chromatin states in male skeletal muscle from the Roadmap Epigenomics Project and GeneHancer information from the Genome Browser (hg38).

Data S5. Additional file 5. Leave-one dataset-out cross-validation (LOOCV) analysis of the muscle clock and comparison with the pan-tissue clock. Each row shows accuracy estimates for a given dataset. The three accuracy measures reported in this paper include the Pearson correlation coefficient between predicted and actual age, the difference between predicted age and actual age (AA_{diff}), and the residuals from a linear model of predicted age against actual age (AA_{resid}). Note, the shaded cells indicate we did not calculate the Pearson correlation coefficient for datasets GSE36166 and GSE40798 as they are invariant in age, nor for dataset GSE87655 as the sample size was too low ($n = 3$). Data are shown as mean \pm SD.

Data S6. Additional file 6. Summary of differentially methylated positions and regions with age. Effect size = methylation change per year of age or between men and women. Each CpG was annotated to one or more genes using the annotation file from Zhou *et al.*²⁸

Conflict of interest

The authors declare that they have no conflict of interest.

- human skeletal muscle following exercise: a systematic review. *Epigenetics* 2019; **14**:1–16.
7. Horvath S. DNA methylation age of human tissues and cell types. *Genome Biol* 2013; **14**:3156.
 8. Jung M, Pfeifer GP. Aging and DNA methylation. *BMC Biol* 2015; **13**:7.
 9. Zykovich A, Hubbard A, Flynn JM, Tarnopolsky M, Fraga MF, Kerkick C, et al. Genome-wide DNA methylation changes with age in disease-free human skeletal muscle. *Aging Cell* 2014; **13**: 360–366.
 10. Chen BH, Marioni RE, Colicino E, Peters MJ, Ward-Caviness CK, Tsai P-C, et al. DNA methylation-based measures of biological age: meta-analysis predicting time to death. *Aging (Albany NY)* 2016; **8**: 1844–1865.
 11. Marioni RE, Shah S, McRae AF, Chen BH, Colicino E, Harris SE, et al. DNA methylation age of blood predicts all-cause mortality in later life. *Genome Biol* 2015; **16**:25.
 12. Horvath S, Erhart W, Brosch M, Ammerpohl O, von Schönfels W, Ahrens M, et al. Obesity accelerates epigenetic aging of human liver. *Proc Natl Acad Sci* 2014; **111**:15538–15543.
 13. Horvath S, Mah V, Lu AT, Woo JS, Choi O-W, Jasinska AJ, et al. The cerebellum ages slowly according to the epigenetic clock. *Aging (Albany NY)* 2015; **7**:294–306.
 14. Sehl ME, Henry JE, Storniolio AM, Ganz PA, Horvath S. DNA methylation age is elevated in breast tissue of healthy women. *Breast Cancer Res Treat* 2017; **164**: 209–219.
 15. Ribel-Madsen R, Fraga MF, Jacobsen S, Bork-Jensen J, Lara E, Calvanese V, et al. Genome-wide analysis of DNA methylation differences in muscle and fat from monozygotic twins discordant for type 2 diabetes. *PLoS ONE* 2012; **7**:e51302.
 16. Jacobsen SC, Brons C, Bork-Jensen J, Ribel-Madsen R, Yang B, Lara E, et al. Effects of short-term high-fat overfeeding on genome-wide DNA methylation in the skeletal muscle of healthy young men. *Diabetologia* 2012; **55**:3341–3349.
 17. Levine ME, Lu AT, Quach A, Chen BH, Assimes TL, Bandinelli S, et al. An epigenetic biomarker of aging for lifespan and healthspan. *Aging (Albany NY)* 2018; **10**: 573–591.
 18. Lu AT, Quach A, Wilson JG, Reiner AP, Aviv A, Raj K, et al. DNA methylation GrimAge strongly predicts lifespan and healthspan. *Aging (Albany NY)* 2019; **11**:303–327.
 19. Horvath S, Oshima J, Martin GM, Lu AT, Quach A, Cohen H, et al. Epigenetic clock for skin and blood cells applied to Hutchinson Gilford Progeria Syndrome and ex vivo studies. *Aging (Albany NY)* 2018; **10**: 1758–1775.
 20. Knight AK, Craig JM, Theda C, Baekvad-Hansen M, Bybjerg-Grauholm J, Hansen CS, et al. An epigenetic clock for gestational age at birth based on blood methylation data. *Genome Biol* 2016; **17**:206.
 21. Ling C, Ronn T. Epigenetics in human obesity and type 2 diabetes. *Cell Metab* 2019; **29**:1028–1044.
 22. Larsson L, Degens H, Li M, Salviati L, Lee YI, Thompson W, et al. Sarcopenia: aging-related loss of muscle mass and function. *Physiol Rev* 2019; **99**:427–511.
 23. Sharples AP, Hughes DC, Deane CS, Saini A, Selman C, Stewart CE. Longevity and skeletal muscle mass: the role of IGF signalling, the sirtuins, dietary restriction and protein intake. *Aging Cell* 2015; **14**:511–523.
 24. Cartee GD, Hepple RT, Bamman MM, Zierath JR. Exercise promotes healthy aging of skeletal muscle. *Cell Metab* 2016; **23**: 1034–1047.
 25. Maegawa S, Lu Y, Tahara T, Lee JT, Madzo J, Liang S, et al. Caloric restriction delays age-related methylation drift. *Nat Commun* 2017; **8**:539.
 26. Yan X, Eynon N, Papadimitriou ID, Kuang J, Munson F, Tirosh O, et al. The Gene SMART study: method, study design, and preliminary findings. *BMC Genomics* 2017; **18**:821.
 27. Morris TJ, Butcher LM, Feber A, Teschendorff AE, Chakravarthy AR, Wojdacz TK, et al. ChAMP: 450k chip analysis methylation pipeline. *Bioinformatics* 2014; **30**:428–430.
 28. Zhou W, Laird PW, Shen H. Comprehensive characterization, annotation and innovative use of Infinium DNA methylation BeadChip probes. *Nucleic Acids Res* 2017; **45**:e22–e22.
 29. McEwen LM, Jones MJ, Lin DTS, Edgar RD, Husquin LT, MacIsaac JL, et al. Systematic evaluation of DNA methylation age estimation with common preprocessing methods and the Infinium MethylationEPIC BeadChip array. *Clin Epigenetics* 2018; **10**:1–9.
 30. Benjamin DJ, Berger JO, Johannesson M, Nosek BA, Wagenmakers E-J, Berk R, et al. Redefine statistical significance. *Hum Nat Behav* 2017; **2**:6–10.
 31. Smyth GK. Limma: linear models for microarray data. 2005 https://doi.org/10.1007/0-387-29362-0_23.
 32. Benjamini Y, Hochberg Y. Controlling the false discovery rate: a practical and powerful approach to multiple testing. *J Roy Stat Soc B Met* 1995; **57**:289–300.
 33. Peters TJ, Buckley MJ, Statham AL, Pidsley R, Samarasinghe KV, Lord R, et al. De novo identification of differentially methylated regions in the human genome. *Epigenetics Chromatin* 2015; **8**:1–16.
 34. Phipson B, Maksimovic J, Oshlack A. missMethyl: an R package for analyzing data from Illumina's HumanMethylation 450 platform. *Bioinformatics* 2016; **32**: 286–288.
 35. Horvath S, Langfelder P, Kwak S, Aaronson J, Rosinski J, Vogt TF, et al. Huntington's disease accelerates epigenetic aging of human brain and disrupts DNA methylation levels. *Aging (Albany NY)* 2016; **8**: 1485–1512.
 36. Maierhofer A, Flunkert J, Oshima J, Martin GM, Haaf T, Horvath S. Accelerated epigenetic aging in Werner syndrome. *Aging (Albany NY)* 2017; **9**:1143–1152.
 37. Loomba R, Gindin Y, Jiang Z, Lawitz E, Caldwell S, Djedjos CS, et al. DNA methylation signatures reflect aging in patients with nonalcoholic steatohepatitis. *JCI insight* 2018; **3**.
 38. Su J, Ekman C, Oskolkov N, Lahti L, Ström K, Brazma A, et al. A novel atlas of gene expression in human skeletal muscle reveals molecular changes associated with aging. *Skelet Muscle* 2015; **5**:35.
 39. Begue G, Raue U, Jemiolo B, Trappe S. DNA methylation assessment from human slow- and fast-twitch skeletal muscle fibers. *J Appl Physiol* 2017; **122**:952–967.
 40. Deschenes MR. Effects of aging on muscle fibre type and size. *Sports Med* 2004; **34**: 809–824.
 41. Laker RC, Ryall JG. DNA methylation in skeletal muscle stem cell specification, proliferation, and differentiation. *Stem Cells Int* 2016; **2016**:1–9.
 42. Brack AS, Muñoz-Cánoves P. The ins and outs of muscle stem cell aging. *Skelet Muscle* 2016; **6**:1.
 43. Bigot A, Duddy WJ, Ouandaogo ZG, Negroni E, Mariot V, Ghimbovski S, et al. Age-associated methylation suppresses SPRY1, leading to a failure of re-quiescence and loss of the reserve stem cell pool in elderly muscle. *Cell Rep* 2015; **13**:1172–1182.
 44. Taylor DL, Jackson AU, Narisu N, Hemani G, Erdos MR, Chines PS, et al. Integrative analysis of gene expression, DNA methylation, physiological traits, and genetic variation in human skeletal muscle. *Proc Natl Acad Sci* 2019; **116**:10883–10888.
 45. Bell CG, Lowe R, Adams PD, Baccarelli AA, Beck S, Bell JT, et al. DNA methylation aging clocks: challenges and recommendations. *Genome Biol* 2019; **20**:249.
 46. Dahmane R, Djordjevic S, Simunic B, Valencic V. Spatial fiber type distribution in normal human muscle Histochemical and tensiomyographical evaluation. *J Biomech* 2005; **38**:2451–2459.
 47. Schroder EA, Esser KA. Circadian rhythms, skeletal muscle molecular clocks, and exercise. *Exerc Sport Sci Rev* 2013; **41**:224–229.
 48. Oh G, Ebrahimi S, Carlucci M, Zhang A, Nair A, Groot DE, et al. Cytosine modifications exhibit circadian oscillations that are involved in epigenetic diversity and aging. *Nat Commun* 2018; **9**:644.
 49. von Haehling S, Morley JE, Coats AJS, Anker SD. Ethical guidelines for publishing in the journal of cachexia, sarcopenia and muscle: update 2019. *J Cachexia Sarcopenia Muscle* 2019; **10**:1143–1145.