



LJMU Research Online

Mazidi, M, Mikhailidis, DP, Sattar, N, Toth, PP, Judd, S, Blaha, MJ, Hernandez, AV, Penson, P and Banach, M

Association of Types of Dietary Fats and All-Cause and Cause-Specific Mortality: A Prospective Cohort Study and Meta-Analysis of Prospective Studies with 1,148,117 Participants

<http://researchonline.ljmu.ac.uk/id/eprint/12608/>

Article

Citation (please note it is advisable to refer to the publisher's version if you intend to cite from this work)

Mazidi, M, Mikhailidis, DP, Sattar, N, Toth, PP, Judd, S, Blaha, MJ, Hernandez, AV, Penson, P and Banach, M (2020) Association of Types of Dietary Fats and All-Cause and Cause-Specific Mortality: A Prospective Cohort Study and Meta-Analysis of Prospective Studies with 1.148.117

LJMU has developed **LJMU Research Online** for users to access the research output of the University more effectively. Copyright © and Moral Rights for the papers on this site are retained by the individual authors and/or other copyright owners. Users may download and/or print one copy of any article(s) in LJMU Research Online to facilitate their private study or for non-commercial research. You may not engage in further distribution of the material or use it for any profit-making activities or any commercial gain.

The version presented here may differ from the published version or from the version of the record. Please see the repository URL above for details on accessing the published version and note that access may require a subscription.

For more information please contact researchonline@ljmu.ac.uk

<http://researchonline.ljmu.ac.uk/>

1 **Association of Types of Dietary Fats and All-Cause and Cause-**
2 **Specific Mortality: A Prospective Cohort Study and Meta-Analysis**
3 **of Prospective Studies with 1,148,117 Participants**
4

5 Mohsen Mazidi^{1*}, Dimitri P. Mikhailidis², Naveed Sattar³, Peter P. Toth^{4,5},
6 Suzanne Judd⁶, Michael J. Blaha⁴, Adrian V. Hernandez^{7,8}, Peter E. Penson^{9,10},
7 Maciej Banach^{11-13*} on behalf of *the International Lipid Expert Panel (ILEP)*
8 & *Lipid and Blood Pressure Meta-analysis Collaboration (LBPMC) Group.*
9

10 ¹ Department of Twin Research and Genetic Epidemiology, King's College London, St Thomas'
11 Hospital, Strand, London, UK; ²Department of Clinical Biochemistry, Royal Free Campus,
12 University College London Medical School, University College London (UCL), London, UK;
13 ³Institute of Cardiovascular and Medical Sciences, University of Glasgow, UK; ⁴The Johns
14 Hopkins Ciccarone Center for the Prevention of Heart Disease, Baltimore, MD, USA; ⁵Preventive
15 Cardiology, CGH Medical Center, Sterling, Illinois, USA; ⁶Department of Biostatistics, University
16 of Alabama at Birmingham; Birmingham, USA; ⁷Health Outcomes, Policy, and Evidence
17 Synthesis (HOPES) Group, University of Connecticut School of Pharmacy, Storrs, CT, USA;
18 ⁸School of Medicine, Universidad Peruana de Ciencias Aplicadas (UPC), Lima, Peru; ⁹School of
19 Pharmacy and Biomolecular Sciences, Liverpool John Moores University, Liverpool, UK;
20 ¹⁰Liverpool Centre for Cardiovascular Science, Liverpool, UK; ¹¹Department of Hypertension,
21 Chair of Nephrology and Hypertension, Medical University of Lodz, Poland; ¹²Polish Mother's
22 Memorial Hospital Research Institute (PMMHRI), Lodz, Poland; ¹³Cardiovascular Research
23 Centre, University of Zielona Gora, Zielona Gora, Poland.
24

25 **Running Title:** *Dietary fats and Risk of Mortality*
26

27 ***Corresponding author:**

28 - *Prof. Maciej Banach*, MD, PhD, FNLA, FAHA, FESC, FASA, Head, Department of
29 Hypertension, WAM University Hospital in Lodz, Medical University of Lodz, Zeromskiego 113;
30 90-549 Lodz, Poland. **Phone:** +48 42 639 37 71; **Fax:** +48 42 639 37 71; **E-mail:**
31 maciejbanach77@gmail.com

32 - *Dr. Mohsen Mazidi*, Department of Biology and Biological Engineering, Food and Nutrition
33 Science, Chalmers University of Technology, SE-412 96 Gothenburg, Sweden. **Email:**
34 moshen@genetics.ac.cn, mazidi@chalmers.se, **Phone:** +8613167518660
35

36 **No. of words: 4673**
37

38 **ABSTRACT:**

39 **Background:** Associations between dietary fats and mortality are unclear.

40 **Methods:** We evaluated the relationship between quartiles of total fat, mono-unsaturated (MUFA),
41 polyunsaturated (PUFA) and saturated fatty acid (SFA) consumption, and all-cause, coronary heart
42 disease (CHD), stroke, and type 2 diabetes (T2D)-associated mortality in 24,144 participants from
43 the National Health and Nutrition Examination Surveys (NHANES) 1999-2010.

44 We added our results to a meta-analysis based on searches until November 2018.

45 **Results:** In fully adjusted Cox-proportional hazard models in our prospective study, there was an
46 inverse association between total fat (HR: 0.90, 95% confidence interval 0.82, 0.99, Q4 vs Q1) and
47 PUFA (0.81, 0.78-0.84) consumption and all-cause mortality, whereas SFA were associated with
48 the increased mortality (1.08, 1.04-1.11). In the meta-analysis of 29 prospective cohorts
49 (n=1,148,117) we found a significant inverse association between total fat (0.89, 0.82-0.97),
50 MUFA (0.93, 0.87-0.99) and PUFA (0.86, 0.80-0.93) consumption and all-cause mortality. No
51 association was observed between total fat and CVD (0.92, 0.79-1.08) or CHD mortality (1.03
52 0.99-1.09). A significant association between SFA intake and CHD mortality (1.10, 1.01-1.20)
53 was observed. Neither MUFA nor PUFA were associated with CVD or CHD mortality. Inverse
54 associations were observed between MUFA (0.80, 0.67-0.96) and PUFA (0.84, 0.80-0.90) intakes
55 and stroke mortality.

56 **Conclusions:** We showed differential associations of total fat, MUFA and PUFA with all-cause
57 mortality, but not CVD or CHD mortalities. SFA was associated with higher all-cause mortality
58 in NHANES and with CHD mortality in our meta-analysis. The type of fat intake appears to be
59 associated with important health outcomes.

60
61 **Key words:** Dietary fats, Coronary Heart Disease, Stroke, Mortality, Diabetes, Meta-analysis.
62

63 **No. of words: 250**
64
65
66

67 **INTRODUCTION**

68 Cardiovascular disease (CVD) remains the leading cause of mortality worldwide ¹, and CVD
69 accounts for over 17 million deaths annually with almost 1 million deaths in the US ¹. Similarly,
70 the prevalence of type 2 diabetes (T2D) is rapidly increasing all over the world with a predicted
71 592 million cases by 2035 ². Diet is one of the most important modifiable risk factors for CVD and
72 current guidelines recommend a low-fat diet and substantial limiting of saturated fatty acids (SFA)
73 while increasing intake of unsaturated fatty acids – both monounsaturated (MUFAs) and
74 polyunsaturated fatty acids (PUFAs) ³.

75 The effects of different types of dietary fat on health have long been of interest. This dietary
76 strategy attracts considerable controversy and has been investigated in epidemiological and clinical
77 studies. Results from relatively old meta-analyses did not support the association of SFAs with all-
78 cause, CVD, or T2D mortality ⁴⁻⁶. In the European Prospective Investigation into Cancer and
79 Nutrition-Netherlands cohort study the authors evaluated SFA intake and coronary heart disease
80 (CHD) with 12-year follow-up ⁷. Higher SFA intake was not associated with higher CHD risk ⁷.
81 Conflicting results were obtained in another study where higher dietary intakes of major SFAs
82 were significantly associated with an increased risk of CHD ⁸. In fact, there are several studies in
83 the medical literature with contradictory findings regarding the potential role of dietary fats on
84 hard health outcomes.

85 In 2017, after a review of the existing evidence, the American Heart Association (AHA)
86 endorsed the recommendation to reduce intake of SFA and replace it with unsaturated fats,
87 especially PUFA, in order to reduce the incidence of CVD ⁹. This was based on several studies
88 reporting PUFA intake to be associated with lower all-cause and CVD mortality ^{10, 11}. However,
89 there are also studies which did not demonstrate a significant link between PUFA intake and risk
90 of all-cause mortality ^{12, 13}, including very recent randomized controlled trials (RCTs), which
91 showed no effect of PUFA supplementation on CVD events ^{14, 15}. The recent 18-country
92 observational Prospective Rural Urban Epidemiology (PURE) study suggested that total fat and
93 types of fat were related to lower all-cause mortality. Total fat and types of fat were not associated
94 with CVD, myocardial infarction (MI), or CVD mortality, whereas saturated fat had an inverse
95 association with stroke ¹⁶. However, the results in PURE may be confounded by poverty in some
96 regions and the results do not apply to high-income countries, where diets are vastly different.

97 Intake of MUFAs has been reported to improve blood lipid profiles, inflammatory markers,
98 and common CVD risk factors, but little evidence exists to associate consumption of MUFAs with
99 lower CVD mortality¹⁷⁻¹⁹. In a recent study performed among 63,442 women from the Nurses'
100 Health Study and 29,942 men from the Health Professionals Follow-Up Study, the authors reported
101 no link between MUFA intake and CHD mortality²⁰. In another study, the associations of specific
102 dietary fats with all-cause and cause-specific mortality were examined, and hazard ratios (HRs)
103 for all-cause mortality comparing extreme quintiles of specific dietary fats were 1.08, (95%CI,
104 1.03-1.14) for SFA, 0.81 (0.78-0.84) for PUFA and 0.89 (0.84-0.94) for MUFA²¹.

105 Based on the available data, the associations between different fats with mortality still appear
106 to be conflicting. Public concerns have increasingly been raised regarding the link between higher
107 SFA intake and the prevalence of various chronic disorders^{22,23}. Therefore, it is still unclear which
108 types of fat should be promoted to improve health outcomes. To address these concerns, we
109 examined the association between fat consumption (total, MUFA, PUFA, SFA) and all-cause and
110 cause-specific (CHD, stroke and T2D) mortality in a large, nationally representative US cohort.
111 Furthermore, we performed a comprehensive systematic review and meta-analysis to examine
112 these possible associations by using all existing prospective cohort studies.

113

114 **METHODS**

115 **[A] NHANES study**

116 ***Population:***

117 This was a prospective cohort study using data from the US National Health and Nutrition
118 Examination Survey (NHANES 1999-2010). The National Center for Health Statistics (NCHS)
119 Research Ethics Review Board approved the underlying protocol, and written informed consent
120 was obtained from all participants. Details on NHANES Laboratory/Medical Technologists
121 Procedures and Anthropometry Procedures have been described elsewhere^{24,25}.

122 Baseline data in NHANES were gathered when individuals participated in a household
123 interview and a medical examination, during which they provided blood and urine samples.
124 Demographic information, including sex, age, ethnic origin, household income, education, and
125 smoking status was obtained during the household interview (26). A digital scale was used to
126 measure weight to the nearest 100 g and a fixed stadiometer to measure height to the nearest mm.
127 Body mass index (BMI) was calculated as weight in kg divided by the square of height in m. Waist

128 circumference (WC) was measured at the iliac crest to the nearest mm, using a steel tape ²⁶. A
129 blood specimen was drawn from the participant's antecubital vein. Fasting blood glucose (FBG)
130 was measured by a hexokinase method using a Roche/Hitachi 911 Analyzer and Roche Modular
131 P Chemistry Analyzer (NJ, USA). Other laboratory-test details are available in the NHANES
132 Laboratory/Medical Technologists Procedures Manual ²⁷. Details on C-reactive protein (CRP)
133 measurement are available elsewhere ²⁶. Hypertension (HTN) was diagnosed in individuals with
134 SBP \geq 140 mmHg and/or DBP \geq 90 mmHg, and in participants on antihypertensive medications ²⁸.
135 T2D was defined as a self-reported history of diabetes or fasting blood glucose (FBG) \geq 126 mg/dL
136 ²⁹.

137 Dietary intake was assessed *via* 24h recall obtained by a trained interviewer, with the use of a
138 computer-assisted dietary interview system with standardized probes, i.e. the United States
139 Department of Agriculture Automated Multiple-Pass Method (AMPM) ^{30,31}. Briefly, the type and
140 quantity of all foods and beverages consumed in a single 24h period before the dietary interview
141 (from midnight to midnight) were collected using the AMPM. The AMPM is designed to enhance
142 complete and accurate data collection while reducing respondent burden ^{31,32}. In the current study
143 we used the data on fatty acids intake such as total daily fat intake, total SFA intake (the sources
144 of SFA in the diet have been described previously ³³), total MUFA intake and total PUFA intake,
145 saturated fatty acids (SFA) 4:0 (butanoic), SFA 6:0 (hexanoic), SFA 8:0 (octanoic), SFA 10:0
146 (decanoic), SFA 12:0 (dodecanoic), SFA 14:0 (tetradecanoic), SFA 16:0 (hexadecanoic), SFA
147 18:0 (octadecanoic), MUFA 16:1 (hexadecenoic), MUFA 18:1 (octadecenoic), MUFA 20:1
148 (eicosenoic), MUFA 22:1 (docosenoic), PUFA 18:2 (octadecadienoic), PUFA 18:3
149 (octadecatrienoic), PUFA 18:4 (octadecatetraenoic), PUFA 20:4 (eicosatetraenoic), PUFA 20:5
150 (eicosapentaenoic), PUFA 22:5 (docosapentaenoic) and PUFA 22:6 (docosahexaenoic).

151

152 ***Mortality:***

153 A full description of mortality linkage methods is available from the National Center for
154 Health Statistics (NCHS). The anonymized data of NHANES 1999-2010 participants were linked
155 to longitudinal Medicare and mortality data using the NHANES assigned sequence number.
156 Mortality follow-up data are available from the date of survey participation until December 31,
157 2011 (median follow-up: 12 years). We examined all-cause mortality, as well as mortality due to

158 CHD (I00-I09, I11, I13, I20-I51), cerebrovascular disease (I60-I69), and diabetes (E10-E14).
159 Cause of death was determined using ICD-10.

160

161 ***Statistical analysis:***

162 Analyses were conducted according to the guidelines set by the Centers for Disease Control
163 (CDC) and Prevention for analysis of the NHANES dataset, accounting for the masked variance
164 and using their suggested weighting methodology³⁴. Continuous and categorical demographic
165 variables were compared across total fat consumption quartiles using analysis of variance
166 (ANOVA) and Chi-square tests, respectively.

167 We constructed Kaplan-Meier survival curves according to quartiles of total fat intake
168 compared differences for the composite endpoint (all-cause mortality) across groups using the *log-*
169 *rank* test. Multivariable Cox proportional hazards were applied to determine the HRs and 95%
170 confidence intervals (95% CIs) of mortality (all-cause, CHD, CVD, T2D and cerebrovascular) for
171 total fat, MUFA, PUFA, SAF consumption; the first quartile (Q1) was always used as reference.
172 To derive the HR and 95%CI we performed analyses using 2 different models, *Model 1*: adjusted
173 for age, race, education, marital status, poverty to income ratio, total energy intake, physical activity
174 and smoking; *Model 2*: additionally adjusted for alcohol consumption, dietary cholesterol, body
175 mass index, hypertension, and non-HDL cholesterol. The Cox regression was applied for the
176 second model (adjusted for age, race, education, marital status, poverty to income ratio, total energy
177 intake, physical activity, smoking, alcohol consumption, dietary cholesterol, body mass index,
178 hypertension, and non-HDL cholesterol), to have same covariates with same outcomes (all-cause,
179 CHD, stroke and T2D death).

180 A two-sided $p < 0.05$ was used to characterise significant results. All statistical analysis was
181 conducted in R (version 3.4.2 R Core Team, 2017), Comprehensive Meta-Analysis V3 software
182 (Biostat 2014, Englewood, NJ) and SPSS® complex sample module version 22.0 (IBM Corp,
183 Armonk, NY).

184

185 **[B] Systematic Review and Meta-Analysis**

186 ***Literature search and study selection:***

187 The meta-analysis was designed, conducted and reported according to Meta-analysis Of
188 Observational Studies in Epidemiology (MOOSE) guidelines³⁵. The primary exposures of interest

189 were fat type consumption and various sub-types, whereas the primary outcomes were all-cause
190 and cause-specific mortality. Prospective cohort studies published up to 31 November 2018,
191 without language restriction, were searched using PubMed, SCOPUS, Web of Science and Google
192 Scholar databases. The query syntax of searching is shown in the Supplemental Methods
193 (**Supplemental Table 1**). This was complemented by hand searches of the reference list of eligible
194 articles, and email correspondence with authors for additional relevant data. After excluding
195 duplicates and based on titles and abstracts, we excluded studies on animals, baseline age <20
196 years, or populations with prior CHD, T2D or any other chronic disease. In addition,
197 supplementary hand searching of reference lists of previous reviews or meta-analyses was
198 conducted.

199

200 ***Study Selection:***

201 Study selection started with the removal of duplicates, followed by screening of titles and
202 abstracts by 2 reviewers (MM and MB). To avoid bias, the reviewers were blinded to the names,
203 qualifications or institutional affiliations of the study authors. The agreement between the
204 reviewers was excellent (Kappa index: 0.92; $p < 0.001$). Disagreements were resolved at a meeting
205 between reviewers and third reviewer (DPM) prior to selected articles being retrieved (a flow chart
206 is available in **Supplemental Figure 1**).

207 We included studies if they met all the following criteria: (1) evaluated fat intake, (2) were
208 population-based cohort studies and reported mortality data, and, (3) relative risk (RR), HR or
209 odds ratio (OR) estimates with 95% CIs adjusted for multivariable factors were available or could
210 be calculated. Studies were excluded according to the following criteria: (1) reviews, letters,
211 unpublished data or comments, (2) those published in languages other than English, (3) not
212 population-based cohort studies, and, (4) RR or HR estimates with 95% CI were not available or
213 could not be calculated (despite individual contact attempts with the given investigators). Narrative
214 reviews, comments, opinion pieces, editorials, letters or any other publications lacking primary
215 data and/or explicit method descriptions, were also excluded.

216

217 ***Data extraction and management:***

218 Full text of studies meeting inclusion criteria were retrieved and screened to determine
219 eligibility by two reviewers (MM, NK). The study quality assessment was performed according to

220 the Newcastle-Ottawa Scale (NOS, **Supplemental Table 2**)³⁶. By evaluation of selection,
221 comparability and outcome, the rating system scores studies from 0 (highest degree of bias) to 9
222 (lowest degree of bias). Additionally, we investigated the funding sources of the eligible studies.
223 Following assessment of methodological quality, two reviewers (MM, MB) extracted data using a
224 purpose-designed data extraction form. Information extracted per study included: author, year and
225 references, country, study name, age, follow-up time (years), number of cases, and number of
226 participants, exposure categories, outcome and main confounders. Extractions were compared and
227 any differences of opinion were resolved by discussion and consultation with a third reviewer
228 (DPM). Any further calculations on study data considered necessary, was conducted by the first
229 reviewer (MM) and checked by the second reviewer (MB).

230

231 ***Data synthesis and statistical analyses:***

232 For studies that reported results from different multivariable-adjusted models, the model with
233 the most confounding factors was extracted for the meta-analysis. DerSimonian-Laird method or
234 generic inverse variance methods were used for random effects meta-analyses to calculate pooled
235 HRs, 95%CI and *p* value for heterogeneity. HRs comparing the highest score category with the
236 lowest category were combined across studies to generate the summary associations. The extent
237 of heterogeneity across studies was examined using the I^2 test³⁷⁻³⁹; an $I^2 >50\%$ together with a
238 two-sided $p < 0.05$ indicated significant heterogeneity³⁷⁻³⁹.

239

240 ***Publication bias:***

241 Potential publication bias was explored using Begg's rank correlation and Egger's weighted
242 regression tests. Duval and Tweedie 'trim and fill' method was used to adjust the analysis for the
243 effects of publication bias⁴⁰. Meta-analyses were conducted using the Comprehensive Meta-
244 Analysis (CMA) V3 software (Biostat, NJ)⁴¹.

245

246 **RESULTS**

247 **[A] NHANES study**

248 Overall, 24,144 participants were included (mean age was 49.6 years and 48.5% were men).
249 Their demographic characteristics according to total fat intake quartiles are shown in **Table 1**.

250 Participants in the highest quartile of total fat were significantly younger than those in the lowest
251 quartile (40.0 vs 54.8, $p<0.001$, **Table 1**). For the lowest category of fat consumption, females
252 were in the majority, while males were in the majority in the highest category ($p<0.001$, **Table 1**).
253 We found the following crude reported mean and SEM (g/day) for intake of total fat
254 (overall= 78.7 ± 0.3 , males= 90.2 ± 0.5 vs females= 66.2 ± 0.4 ; $p<0.001$), PUFA (overall= 16.8 ± 0.8 ,
255 males= 19.2 ± 0.4 vs females= 14.1 ± 0.5 ; $p<0.05$), MUFA (overall= 28.6 ± 0.1 , male= 33.1 ± 0.2 vs
256 female= 23.1 ± 0.2 ; $p<0.05$), and SFA (overall= 25.6 ± 0.1 , males= 29.5 ± 0.1 vs females= 21.4 ± 0.1 ;
257 $p<0.001$).

258 During the follow-up of up to 12 years of NHANES 1999-2010, 3,632 all-cause deaths were
259 recorded, including 714 CHD-related deaths and 233 due to stroke. Kaplan-Meier survival plots
260 showed that subjects in the highest quartiles of total fat intake had significantly lower all-cause
261 mortality than those in the lowest quartiles (log-rank $p<0.0001$; **Figure 1 & Central Illustration**).

262 Results from multivariable Cox regression models for risk of death across fat quartiles are
263 shown in **Table 2**. With regard to total fat, in *Model 1*, subjects with the highest consumption had
264 a 16% lower risk of mortality (HR: 0.84, 95%CI: 0.81, 0.88); this association was diluted but was
265 still significant in *Model 2* (HR: 0.90, 95%CI: 0.82, 0.99, **Table 2, Central Illustration**). In the
266 *Model 1*, subjects in the highest quartile had 12% lower risk for CHD mortality (HR: 0.88, 95%CI:
267 0.86, 0.89, **Table 2**), while this association was no longer evident after further adjustments in
268 *Model 2* ($p=0.421$ for trend; **Central Illustration**). We did not find significant association between
269 intake of total fat and both stroke and T2D mortality in both models ($p>0.365$, **Table 2**).

270 With regard to SFA intake, increase in risk of all-cause mortality was observed for both the
271 1st and 2nd model (*Model 2*=Q2: 1.05, 95%CI: 1.02, 1.08; Q3: 1.14, 95%CI: 1.10, 1.19, Q4: 1.08,
272 95%CI: 1.04, 1.11, **Table 2, Central Illustration**). We observed that subjects in the highest
273 quartile (Q4) of the SFA had significantly higher risk of CHD mortality even after adjustment for
274 wide range of co-variables (HR: 1.11, 95%CI: 1.07, 1.17, **Table 2, Central Illustration**). In *Model*
275 *2*, subjects in the highest quartile had a 13 and 4% greater risk of stroke (HR: 1.13, 95%CI: 1.06,
276 1.22) and T2D (HR: 1.04, 95%CI: 1.01, 1.08) mortality, respectively, compared with the first
277 quartile (Q1).

278 With regard to MUFA, we found that (*Model 1*) subjects in the highest quartile had a
279 significantly lower risk of all-cause mortality compared with the first quartile (Q2: 1.02, 95%CI:
280 0.29, 3.96; Q3: 0.85, 95%CI: 0.80, 0.91, and Q4: 0.71, 95%CI: 0.69, 0.74, **Table 2, Central**
281 **Illustration**). However, no significant association was observed for this outcome in the fully
282 adjusted *Model 2*. Further, either in the partially or fully adjusted model we observed insignificant
283 association between CHD, stroke and T2D mortalities with MUFA intake (**Table 2**).

284 With regard to PUFA intake, we observed a protective association with all-cause mortality in
285 both minimally and fully adjusted model - in the *Model 2* subjects in the highest quartile had 19%
286 lower risk of all-cause mortality (HR: 0.81, 95%CI: 0.78-0.84, **Table 2, Central Illustration**).
287 Further, subjects in the highest quartile of PUFA intake in both in first and second model had a 43
288 and 25% lower risk of CHD mortality (*Model 1*= Q4: 0.57, 95%CI: 0.55, 0.60; *Model 2* = Q4: 0.75,
289 95%CI: 0.62-0.90, **Table 2, Central Illustration**). Similar inverse associations were observed in
290 both models for both stroke and T2D mortality - in the fully adjusted model, subjects in the highest
291 quartile of PUFA both had 15 and 14% lower risk of stroke and T2D mortality (0.85, 95%CI: 0.80-
292 0.91; and 0.84, 95%CI: 0.79-0.92, respectively; **Table 2**).

293

294 **[B] Meta-Analysis**

295 Of 49 eligible full articles, 29 cohorts met the inclusion criteria (**Supplemental Figure 1**). An
296 overview of key characteristics of the 29 prospective cohort studies is shown in **Supplemental**
297 **Table 3**. A total of 1,148,117 participants, with 253,592 deaths, were included in the analysis. The
298 duration of follow-up ranged from 3.7 to 32.0 years (mean= 13.3 years [156 months]). Results of
299 NOS quality assessment are shown in the **Supplemental Table 2**, with seven studies scoring 8,
300 and no study scoring less than 7.

301

302 ***Total fat consumption and all-cause and cause-specific mortality:***

303 We found an inverse and significant association between total fat consumption and all-cause
304 mortality (HR: 0.89, 95%CI: 0.82-0.97, $p=0.009$, $n=11$ studies, I^2 : 27%, **Figure 2, Central**
305 **Illustration**). No significant association was observed between total fat with both CVD and CHD
306 mortality (HR: 0.92, 95%CI: 0.79-1.08, $p=0.340$, $n=8$ studies, I^2 : 46%, **Supplemental Figure 2**,

307 and HR: 1.03, 95%CI: 0.99-1.09, $p=0.115$, $n=7$ studies, I^2 : 42%, respectively; **Central**
308 **Illustration**).

309 We observed a non-significant association between SFA and all-cause mortality (HR: 1.04,
310 95%CI: 0.98-1.11, $p=0.139$, $n=18$ studies, I^2 : 40%, **Supplemental Figure 3, Central Illustration**);
311 no significant association was also showed between SFA intake and CVD mortality (HR: 0.96,
312 95%CI: 0.84-1.11, $p=0.643$, $n=9$ studies, I^2 : 30%, **Supplemental Figure 4**). While we found a
313 significant association with CHD mortality (HR: 1.10, 95%CI: 1.01-1.20, $p<0.001$, $n=19$ studies,
314 I^2 : 52%, **Figure 3, Central Illustration**). No significant association was observed between SFA
315 and stroke mortality (HR: 1.03, 95%CI: 0.85-1.26, $p=0.703$, $n=3$ studies, I^2 : 41%).

316 There was an inverse association between MUFA consumption and risk of all-cause mortality
317 (HR: 0.94, 95%CI: 0.89-0.99, $p=0.028$, $n=15$ studies, I^2 : 56%, **Figure 4, Central Illustration**),
318 while there was an inverse however non-significant association between MUFA intake and CVD
319 mortality (HR: 0.89, 95%CI: 0.77-1.03, $p=0.120$, $n=13$ studies, I^2 : 32%, **Supplemental Figure 5**),
320 and CHD mortality (HR: 0.99, 95%CI: 0.89-1.10, $p=0.896$, $n=9$ studies, I^2 : 49%, **Supplemental**
321 **Figure 6, Central Illustration**). Finally, we showed an inverse and significant association
322 between MUFA intake and stroke mortality (HR: 0.80, 95%CI: 0.67-0.96, $p=0.019$, $n=3$ studies,
323 I^2 : 0%).

324 There was an inverse link between PUFA consumption and risk of all-cause mortality (HR:
325 0.88, 95%CI: 0.83-0.94, $p<0.001$, $n=14$ studies, I^2 : 63%, **Figure 5, Central Illustration**), while
326 no significant association between PUFA intake and CVD was observed (HR: 0.98, 95%CI: 0.85-
327 1.12, $p=0.773$, $n=8$ studies, I^2 : 47.4, **Supplemental Figure 7**) and CHD (HR: 0.96, 95%CI: 0.85-
328 1.07, $p=0.480$, $n=8$ studies, I^2 : 51.0, **Supplemental Figure 8, Central Illustration**) mortality was
329 observed. There was an inverse significant effect of PUFA consumption on the risk of stroke
330 mortality (HR: 0.84, 95%CI: 0.80-0.90, $p<0.001$, $n=2$ studies, I^2 : 0.0).

331

332 ***Sensitivity analysis:***

333 In leave-one-out sensitivity analyses, the pooled effect estimates remained similar for the
334 association of total fat (HR: 0.89, 95%CI: 0.82-0.97, $p=0.009$), SFA (HR: 1.03, 95%CI: 0.99-1.08,
335 $p=0.113$), MUFA (HR: 0.93, 95%CI: 0.87-0.99, $p=0.043$) and PUFA (HR: 0.86, 95%CI: 0.80-
336 0.93, $p<0.001$) intake on all-cause mortality.

337

338 **Publication bias:**

339 Both Egger's linear regression (intercept=0.461, 95%CI: -2.45, 3.37, $p=0.523$) and Begg's
340 rank correlation test (Kendall's Tau with continuity correction=0.285, $z=0.901$, $p=0.415$) were not
341 indicative of publication bias. After adjustment of effect size for potential publication bias using
342 the 'trim and fill' correction, no potentially missing studies were imputed in funnel plot. The 'fail-
343 safe N' test showed that 126 studies would be needed to bring the weighted mean difference down
344 to a non-significant ($p \geq 0.05$) value.

345

346 **DISCUSSION**

347 Using a large and representative samples of USA adults, with long follow-up periods we have
348 found that reported total dietary fat intake is linked to lower all-cause mortality (10-13%). SFA
349 intake was associated with all-cause, CHD, stroke and T2D mortality. In contrast, PUFA intake
350 showed an inverse association; higher intake was associated with lower risk of all-cause and cause-
351 specific mortality. MUFA intake was not significantly associated with any type of mortality. These
352 results were robust even after adjustments for a wide range of clinical, nutritional and socio-
353 economic factors. We further pooled data from all the published prospective studies with >1.1
354 million participants; this confirmed the results based on NHANES cohort studies and revealed a
355 protective association of total fat, MUFA and PUFA on all-cause mortality, while no link was
356 observed between total fat, MUFA and PUFA intake with CVD and CHD mortality (with
357 significant association with stroke mortality). SFA intake was associated with higher risk of CHD
358 mortality.

359 Currently, there are considerable discrepancies between studies regarding fat intake and its
360 relationship with all-cause and cause-specific mortality^{10,11,13,42-58}. Our results showed an inverse
361 association of all-cause mortality with total fat, MUFA and PUFA consumption. The PURE study
362 (18 countries, $n=135\ 335$, follow-up of 7.4 years) study reported that intake of total fat and each
363 type of fat was associated with lower risk of all-cause mortality (total fat: HR 0.77 [95% CI 0.67-
364 0.87]; saturated fat, HR 0.86 [0.76-0.99]; monounsaturated fat: HR 0.81 [0.71-0.92] and
365 polyunsaturated fat: HR 0.80 [0.71-0.89])⁴². Another study that investigated 83,349 women from
366 the Nurses' Health Study (follow up of 32 years) and 42,884 men from the Health Professionals
367 Follow-up Study (follow up of 26 years), reported that the HRs of all-cause mortality comparing

368 extreme quartiles of specific dietary fats was 1.08, (95% CI: 1.03-1.14) for saturated fat, 0.81 (95%
369 CI: 0.78-0.84) for polyunsaturated fat and 0.89 (95% CI: 0.84-0.94) for monounsaturated fat ¹¹. In
370 contrast, Wakai *et al.* ¹⁰ and Leosdottir *et al.* ¹³, reported no significant association between total
371 fat consumption and risk of all-cause mortality. We reported small (6% lower risk) but potentially
372 protective association of MUFA intake on all-cause mortality (significant in the meta-analysis with
373 longer follow-up), which is in line with the PREvención con DIeta MEDiterránea study (n=7038,
374 6 years follow-up) that reported inverse associations with all-cause death for PUFA and MUFA
375 intakes ⁴³. Further, the above-mentioned study by Wakai *et al.* (Japan Collaborative Cohort Study;
376 58,672 individuals; 19.3-year follow up) found an inverse association between total fat intake and
377 all-cause mortality (HR: 0.91, 95%CI:0.93-0.99) ¹⁰. Surprisingly, a recent meta-analysis of 49
378 RCTs (but with fewer participants and a much shorter follow-up in comparison to our meta-
379 analysis) investigated the link between PUFA intake (PUFA supplementation, but not habitual
380 PUFA intake) and mortality, and reported that increasing PUFA intake probably has little or no
381 effect on all-cause mortality. In our study habitual PUFA intake was associated with lower all-
382 cause mortality by 14-19%. Furthermore, the investigators reported that increasing PUFA has little
383 or no effect on CVD mortality (we also observed only 2% risk reduction in the meta-analysis) ⁵⁹.

384 We have shown that total fat, MUFA and PUFA consumption were not significantly
385 associated with either CVD or CHD mortality. The Esrey *et al.* study (n=4546, follow-up 12 years.),
386 reported no significant association between total fat and CHD (RR: 0.99, 95%CI: 0.95-1.03)
387 mortality ⁴⁵. Similar results were observed by Xu *et al.* in their study with 2938 subjects and 7.2-
388 year follow-up (RR: 0.77, 95%CI: 0.40-1.44) ⁵¹. With regard to MUFA intake and CVD mortality,
389 most of the studies are in line with our results. A single study, conducted by Guasch-Ferré *et al.*
390 (n=7038, 6 years of follow-up) reported a surprisingly large protective effect of MUFA
391 consumption on CVD mortality (RR: 0.50, 95%CI: 0.30-0.80) ⁴³, while the result of other available
392 studies on the link between MUFA intake and CVD mortality no significant association was
393 observed ^{10,42,44,47,50,59}. We believe the effect of PUFA intake on CVD mortality requires further
394 investigation, as the available studies have conflicting results, and most suggest no link ^{10,13,42,44}.
395 However, the same study by Guasch-Ferré *et al.* study again reported very protective effect of
396 PUFA consumption on CVD mortality (RR: 0.68, 95%CI: 0.48-0.96) ⁴³.

397 We observed strong and significant association between SFA-intake and all-cause and cause-
398 specific mortality in two investigated cohorts of NHANES study but after pooling all the studies

399 in meta-analysis, SFA intake was no longer related to all-cause mortality, but it was associated
400 with 10% higher risk of CHD mortality. Several available studies reported no link between SFA
401 intake and all-cause mortality^{13,42,43,50,44,58}. The Malmo Diet and Cancer Study (n=28,098, 6-year
402 follow up) demonstrated no significant link between SFA and all-cause mortality (RR: 0.89,
403 95%CI: 0.64-1.23)¹³. The same results were observed in relatively small (n=501) the Baltimore
404 Longitudinal Study of Aging (BLSA) with 18-year follow-up (RR: 1.16, 95%CI: 0.86-1.56)⁵⁸.
405 The effect of SFA intake on CHD mortality has been already observed^{45,51-53,61}. A study in a Greek
406 population (n=28,572, 4.5 years follow-up), reported a highly significant link (RR: 1.76, 95%CI:
407 1.11-2.77) between SFA and CHD mortality⁶¹.

408 Our study has some strengths and limitations. Our observational study was based on a well-
409 known, long-term large population-based US cohort. The availability of detailed data on covariates
410 allowed us to better control for confounding. In NHANES, we used a validated 24-h food recall
411 method, and our data was collected by trained personnel in settings, which allow us to report health
412 data accurately. Although 24-h recall methods may be prone to bias and confounding, alternatives
413 such as food-frequency questionnaires are also subjective estimates. Dietary intake of nutrients is
414 complex to measure, and no instrument is perfect. It has been suggested that combining
415 questionnaire data with biomarker levels is an attractive alternative, but this adds complexity and
416 expense to studies⁶². Furthermore, we evaluated over 1.1 million subjects in our meta-analysis,
417 pooling all the published studies to reinforce our cohort results. However, varying definitions of
418 the exposure also pose a significant limitation to the interpretation and reliability of the meta-
419 analysis, which might be sensitive to the categorization of fat intake and the varying definitions.
420 Heterogeneity of the results of the component studies was relatively low or modest, which
421 indicated that each result was broadly consistent and most variation may be attributable to chance
422 alone. The limitation of the cohort study is its observational design, which means we cannot
423 exclude the possibility that our findings may be influenced by unmeasured or residual confounding
424 factors or indeed reverse causality whereby ill health alters diet. Studies focusing on single
425 nutrients can be complicated by the fact that a diet low in one energy source (e.g. fat) may contain
426 higher amounts of alternative energy sources e.g. carbohydrate⁶³ but also that people
427 (non)adherent to reduce one energy source, might be also (non)adherent to others (like proteins or
428 carbohydrate). In the NHANES 1999-2010 results, an increase in BMI and in the percentage of
429 obesity from Q1 to Q4 was observed, whereas this is not reflected by the energy intake. Although,

430 our analysis was corrected for several covariates (however not all data was available, including
431 details on medication used), it would be better for the future studies to consider more variables or
432 use a different design to minimize the impact of other factors, as demographic details, risk factors
433 and the gender balance of the participants varied between quartiles of fat intake in this analysis.
434 As our analysis was based on quantities of fat, rather than specific foods, it is hard to interpret the
435 results in terms of specific advice for patients.

436 *In conclusion*, our results highlighted the divergent associations between total fat, MUFA and
437 PUFA and all-cause mortality, while suggesting that not only quantity but also quality is critical
438 for long-term outcomes. SFA intake was mainly associated with higher CHD mortality, and PUFA
439 with significantly lower all-cause mortality and stroke events. No significant association was
440 observed between total fat and MUFA with CVD and CHD mortality. Further well-design studies
441 are necessary to explain all the inconsistencies between dietary fat intake and all-cause and cause-
442 specific mortality and to provide clear recommendations on target levels of fats in the healthy diet.
443 For now, however, based on these data, and the results of prior trials, it seems sensible to focus on
444 the quality of dietary fats with a reduction in SFA intake and increase PUFA and MUFA intake to
445 lower future CVD outcomes and mortality.

446

447

448

449 **ACKNOWLEDGMENTS:**

450 The material presented in this manuscript is original and has not been submitted for publication
451 elsewhere. It was presented as an oral lecture during Advance in Science Session – *Preventive*
452 *Cardiology: Nutrition, Malnutrition and Health Disease* during European Society of Cardiology
453 (ESC) Congress in Paris 2019.

454 ***Financial Disclosure:*** None.

455 ***Conflict of interest statement:*** DPM has given talks, acted as consultant or attended conferences
456 sponsored by MSD, NovoNordisk and Libytec. PEP owns four shares in AstraZeneca PLC and
457 has received honoraria and/or travel reimbursement for events sponsored by AKCEA, Amgen,
458 AMRYT, Link Medical, Napp, Sanofi The other authors have no conflict of interest to declare.

459

460

461 **FIGURES LEGENDS:**

462 **Central Illustration:** An effect of total dietary fats, saturated, mono- and polyunsaturated fats on
463 all-cause and CHD mortality based in NHANES and meta-analysis results.

464 **Figure 1:** Risk of all-cause death across the category of total fat intake in NHANES 1999-2010

465 **Figure 2.** Forest plot of total fat consumption and all-cause mortality.

466 **Figure 3.** Forest plot of high-saturated fatty acids consumption and risk of coronary heart disease
467 mortality.

468 **Figure 4.** Forest plot of monounsaturated fatty acids consumption and risk of all-cause mortality.

469 **Figure 5.** Forest plot of polyunsaturated fatty acids consumption and risk of all-cause mortality.

470

471

472

473

474

475

476

477

478

479

480

481

482

483

484 **REFERENCES:**

- 485 1. Global, regional, and national life expectancy, all-cause mortality, and cause-specific
486 mortality for 249 causes of death, 1980-2015: a systematic analysis for the Global Burden of
487 Disease Study 2015. *Lancet* 2016;388:1459-1544.
- 488 2. International Diabetes Federation IDA, 6th ed. (2013). <http://www.idf.org/diabetesatlas>.
489 Accessed February 10, 2019.
- 490 3. World Health Organization (WHO) healthy diet fact sheet number 394, 2017.
491 www.who.int/mediacentre/factsheets/fs394/en/ (accessed Aug 19, 2018).
- 492 4. De Souza RJ, Mente A, Maroleanu A, et al. Intake of saturated and trans unsaturated fatty
493 acids and risk of all cause mortality, cardiovascular disease, and type 2 diabetes: systematic review
494 and meta-analysis of observational studies. *BMJ* 2015;351:h3978.
- 495 5. O'neil A, Itsiopoulos C. Association of dietary, circulating, and supplement fatty acids with
496 coronary risk. *Annals of internal medicine* 2014;161:458-458.
- 497 6. Siri-Tarino PW, Sun Q, Hu FB, Krauss RM. Meta-analysis of prospective cohort studies
498 evaluating the association of saturated fat with cardiovascular disease. *The American journal of*
499 *clinical nutrition* 2010;91:535-546.
- 500 7. Praagman J, Beulens JW, Alsema M, et al. The association between dietary saturated fatty
501 acids and ischemic heart disease depends on the type and source of fatty acid in the European
502 Prospective Investigation into Cancer and Nutrition–Netherlands cohort, 2. *The American journal*
503 *of clinical nutrition* 2016;103:356-365.
- 504 8. Zong G, Li Y, Wanders AJ, et al. Intake of individual saturated fatty acids and risk of
505 coronary heart disease in US men and women: two prospective longitudinal cohort studies. *BMJ*
506 2016;355:i5796.
- 507 9. Sacks FM, Lichtenstein AH, Wu JH, et al. Dietary fats and cardiovascular disease: a
508 presidential advisory from the American Heart Association. *Circulation* 2017;136:e1-e23.
- 509 10. Wakai K, Naito M, Date C, Iso H, Tamakoshi A. Dietary intakes of fat and total mortality
510 among Japanese populations with a low fat intake: the Japan Collaborative Cohort (JACC) Study.
511 *Nutr Metab.* 2014;11:12.
- 512 11. Wang DD, Li Y, Chiuve SE, et al. Association of Specific Dietary Fats With Total and
513 Cause-Specific Mortality. *JAMA Intern Med.* 2016;176:1134-45.

- 514 12. Zhuang P, Wang W, Wang J, Zhang Y, Jiao J. Polyunsaturated fatty acids intake, omega-
515 6/omega-3 ratio and mortality: Findings from two independent nationwide cohorts. *Clin Nutr.*
516 2019;38:848-855.
- 517 13. Leosdottir M, Nilsson PM, Nilsson JA, Mansson H, Berglund G. Dietary fat intake and
518 early mortality patterns--data from The Malmo Diet and Cancer Study. *J Intern Med*
519 2005;258:153-65.
- 520 14. Aung T, Halsey J, Kromhout D, et al. Associations of Omega-3 Fatty Acid Supplement
521 Use With Cardiovascular Disease Risks: Meta-analysis of 10 Trials Involving 77917 Individuals.
522 *JAMA Cardiol* 2018;3:225-234.
- 523 15. Bowman L, Mafham M, Wallendszus K, et al. Effects of n-3 Fatty Acid Supplements in
524 Diabetes Mellitus. *N Engl J Med* 2018;379(16):1540-1550.
- 525 16. Dehghan M, Mente A, Zhang X, et al. Associations of fats and carbohydrate intake with
526 cardiovascular disease and mortality in 18 countries from five continents (PURE): a prospective
527 cohort study. *Lancet* 2017;390:2050-2062.
- 528 17. Chowdhury R, Warnakula S, Kunutsor S, et al. Association of dietary, circulating, and
529 supplement fatty acids with coronary risk: a systematic review and meta-analysis. *Annals of*
530 *internal medicine* 2014;160:398-406.
- 531 18. Michas G, Micha R, Zampelas A. Dietary fats and cardiovascular disease: putting together
532 the pieces of a complicated puzzle. *Atherosclerosis* 2014;234:320-328.
- 533 19. Skeaff CM, Miller J. Dietary fat and coronary heart disease: summary of evidence from
534 prospective cohort and randomised controlled trials. *Annals of nutrition and metabolism*
535 2009;55:173-201.
- 536 20. Zong G, Li Y, Sampson L, Dougherty LW, et al. Monounsaturated fats from plant and
537 animal sources in relation to risk of coronary heart disease among US men and women. *The*
538 *American journal of clinical nutrition* 2018;107:445-453.
- 539 21. Wang DD, Li Y, Chiuve SE, et al. Association of specific dietary fats with total and cause-
540 specific mortality. *JAMA internal medicine* 2016;176:1134-1145.
- 541 22. Russo GL. Dietary n-6 and n-3 polyunsaturated fatty acids: from biochemistry to clinical
542 implications in cardiovascular prevention. *Biochemical pharmacology* 2009;77:937-946.
- 543 23. Simopoulos AP. An increase in the omega-6/omega-3 fatty acid ratio increases the risk for
544 obesity. *Nutrients* 2016;8:128.

- 545 24. Remer T. Influence of nutrition on acid-base balance--metabolic aspects. *Eur J Nutr*
546 2001;40:214-20.
- 547 25. Engberink MF, Bakker SJ, Brink EJ, et al. Dietary acid load and risk of hypertension: the
548 Rotterdam Study. *Am J Clin Nutr* 2012;95:1438-44.
- 549 26. NHANES. http://www.cdc.gov/NCHS/data/nhanes/nhanes_09_10/CRP_F_met.pdf.
550 [accessed 19.08.13].
- 551 27. National Center for Health Statistics: <http://www.cdc.gov/nchs/nhanes.htm>.
- 552 28. Nwankwo T, Yoon SS, Burt V, Gu Q. Hypertension among adults in the United States:
553 National Health and Nutrition Examination Survey, 2011-2012. *NCHS Data Brief* 2013(133):1-8.
- 554 29. Report of the Expert Committee on the Diagnosis and Classification of Diabetes Mellitus.
555 *Diabetes Care* 1997;20:1183-97.
- 556 30. Ahluwalia N, Andreeva VA, Kesse-Guyot E, Hercberg S. Dietary patterns, inflammation
557 and the metabolic syndrome. *Diabetes Metab* 2013;39:99-110.
- 558 31. Ahluwalia N, Dwyer J, Terry A, Moshfegh A, Johnson C. Update on NHANES Dietary
559 Data: Focus on Collection, Release, Analytical Considerations, and Uses to Inform Public Policy.
560 *Adv Nutr* 2016;7:121-34.
- 561 32. Moshfegh AJ, Rhodes DG, Baer DJ, et al. The US Department of Agriculture Automated
562 Multiple-Pass Method reduces bias in the collection of energy intakes. *Am J Clin Nutr*
563 2008;88:324-32.
- 564 33. O'Neil CE, Keast DR, Fulgoni VL, Nicklas TA. Food sources of energy and nutrients
565 among adults in the US: NHANES 2003–2006. *Nutrients*. 2012;4:2097-120.
- 566 34. NHANES Statistics. Analytic And Reporting Guidelines:
567 http://www.cdc.gov/nchs/data/nhanes/nhanes_03_04/nhanes_analytic_guidelines_dec_2005.pdf.
- 568 35. Stroup DF, Berlin JA, Morton SC, et al. Meta-analysis of observational studies in
569 epidemiology: a proposal for reporting. *Meta-analysis Of Observational Studies in Epidemiology*
570 (MOOSE) group. *JAMA* 2000;283:2008-12.
- 571 36. Stang A. Critical evaluation of the Newcastle-Ottawa scale for the assessment of the quality
572 of nonrandomized studies in meta-analyses. *Eur J Epidemiol* 2010;25:603-5.
- 573 37. Ferretti G, Bacchetti T, Sahebkar A. Effect of statin therapy on paraoxonase-1 status: A
574 systematic review and meta-analysis of 25 clinical trials. *Prog Lipid Res* 2015;60:50-73.

- 575 38. Sahebkar A. Are curcuminoids effective C-reactive protein-lowering agents in clinical
576 practice? Evidence from a meta-analysis. *Phytother Res* 2014;28(5):633-42.
- 577 39. Sahebkar A, Serban MC, Mikhailidis DP, et al. Head-to-head comparison of statins versus
578 fibrates in reducing plasma fibrinogen concentrations: A systematic review and meta-analysis.
579 *Pharmacol Res* 2016;103:236-52.
- 580 40. Duval S, Tweedie R. Trim and fill: A simple funnel-plot-based method of testing and
581 adjusting for publication bias in meta-analysis. *Biometrics* 2000;56(2):455-63.
- 582 41. Borenstein M, Hedges L, Higgins J, Rothstein H. *Comprehensive Metaanalysis (Vers. 2)*.
583 Englewood Cliffs, NJ: Biostat. Inc; 2005.
- 584 42. Dehghan M, Mente A, Zhang X, et al. Associations of fats and carbohydrate intake with
585 cardiovascular disease and mortality in 18 countries from five continents (PURE): a prospective
586 cohort study. *Lancet* 2017;390:2050-2062.
- 587 43. Guasch-Ferre M, Babio N, Martinez-Gonzalez MA, et al. Dietary fat intake and risk of
588 cardiovascular disease and all-cause mortality in a population at high risk of cardiovascular disease.
589 *Am J Clin Nutr* 2015;102:1563-73.
- 590 44. Nagata C, Nakamura K, Wada K, et al. Total fat intake is associated with decreased
591 mortality in Japanese men but not in women. *J Nutr* 2012;142:1713-9.
- 592 45. Esrey KL, Joseph L, Grover SA. Relationship between dietary intake and coronary heart
593 disease mortality: lipid research clinics prevalence follow-up study. *J Clin Epidemiol*
594 1996;49:211-6.
- 595 46. Pietinen P, Ascherio A, Korhonen P, et al. Intake of fatty acids and risk of coronary heart
596 disease in a cohort of Finnish men. The Alpha-Tocopherol, Beta-Carotene Cancer Prevention
597 Study. *Am J Epidemiol* 1997;145:876-87.
- 598 47. Dilis V, Katsoulis M, Lagiou P, et al. Mediterranean diet and CHD: the Greek European
599 Prospective Investigation into Cancer and Nutrition cohort. *Br J Nutr* 2012;108:699-709.
- 600 48. Solfrizzi V, D'Introno A, Colacicco AM, et al. Unsaturated fatty acids intake and all-causes
601 mortality: a 8.5-year follow-up of the Italian Longitudinal Study on Aging. *Exp Gerontol*
602 2005;40:335-43.
- 603 49. Trichopoulou A, Orfanos P, Norat T, et al. Modified Mediterranean diet and survival:
604 EPIC-elderly prospective cohort study. *BMJ* 2005;330:991.

- 605 50. Trichopoulou A, Costacou T, Bamia C, Trichopoulos D. Adherence to a Mediterranean
606 diet and survival in a Greek population. *N Engl J Med* 2003;348:2599-608.
- 607 51. Xu J, Eilat-Adar S, Loria C, et al. Dietary fat intake and risk of coronary heart disease: the
608 Strong Heart Study. *Am J Clin Nutr* 2006;84:894-902.
- 609 52. Ascherio A, Rimm EB, Giovannucci EL, Spiegelman D, Stampfer M, Willett WC. Dietary
610 fat and risk of coronary heart disease in men: cohort follow up study in the United States. *BMJ*
611 1996;313:84-90.
- 612 53. Boniface DR, Tefft ME. Dietary fats and 16-year coronary heart disease mortality in a
613 cohort of men and women in Great Britain. *Eur J Clin Nutr* 2002;56:786-92.
- 614 54. Goldbourt U, Yaari S, Medalie JH. Factors predictive of long-term coronary heart disease
615 mortality among 10,059 male Israeli civil servants and municipal employees. A 23-year mortality
616 follow-up in the Israeli Ischemic Heart Disease Study. *Cardiology* 1993;82:100-21.
- 617 55. Mann JI, Appleby PN, Key TJ, Thorogood M. Dietary determinants of ischaemic heart
618 disease in health conscious individuals. *Heart* 1997;78:450-5.
- 619 56. McGee D, Reed D, Stemmerman G, Rhoads G, Yano K, Feinleib M. The relationship of
620 dietary fat and cholesterol to mortality in 10 years: the Honolulu Heart Program. *Int J Epidemiol*
621 1985;14:97-105.
- 622 57. Sauvaget C, Nagano J, Hayashi M, Yamada M. Animal protein, animal fat, and cholesterol
623 intakes and risk of cerebral infarction mortality in the adult health study. *Stroke* 2004;35:1531-7.
- 624 58. Tucker KL, Hallfrisch J, Qiao N, Muller D, Andres R, Fleg JL. The combination of high
625 fruit and vegetable and low saturated fat intakes is more protective against mortality in aging men
626 than is either alone: the Baltimore Longitudinal Study of Aging. *J Nutr* 2005;135:556-61.
- 627 59. Abdelhamid AS, Martin N, Bridges C, et al. Polyunsaturated fatty acids for the primary
628 and secondary prevention of cardiovascular disease. *Cochrane Database Syst Rev*
629 2018;7:Cd012345.
- 630 60. Misirli G, Benetou V, Lagiou P, Bamia C, Trichopoulos D, Trichopoulou A. Relation of
631 the traditional Mediterranean diet to cerebrovascular disease in a Mediterranean population. *Am J*
632 *Epidemiol* 2012;176:1185-92.
- 633 61. Trichopoulou A, Psaltopoulou T, Orfanos P, Trichopoulos D. Diet and physical activity in
634 relation to overall mortality amongst adult diabetics in a general population cohort. *J Intern Med*
635 2006;259:583-91.

636 62. Shim JS, Oh K, Kim HC. Dietary assessment methods in epidemiologic studies. *Epidemiol*
637 *Health* 2014;36:e2014009.

638 63. Hooper L, Martin N, Abdelhamid A, Davey Smith G. Reduction in saturated fat intake for
639 cardiovascular disease. *Cochrane Database Syst Rev* 2015;(6):CD011737.

640

Table 1. Characteristics of the study participants based on total fat consumption (NHANES, 1999-2010).						
		Total Fat Consumption				<i>P-value</i>
		(NHANES 1999-2010)				
		Q1 (n = 5996)	Q2 (n = 6142)	Q3 (n = 6008)	Q4 (n = 5998)	
Macronutrients' amounts (g/day; calories/day; %energy*)		Carbohydrate: 161 (644), Protein: 45 (180), Fat: 32 (288; 25%)	Carbohydrate: 212 (848), Protein: 63 (252), Fat: 55 (495; 31%)	Carbohydrate: 254 (1016), Protein: 79 (316), Fat: 80 (720; 35%)	Carbohydrate: 328 (1312), Protein: 109 (436), Fat: 120 (1080; 38%)	
Age (Years)		51.2±0.2	48.2±0.2	45.6±0.1	40.8±0.2	<0.001
Gender	Men (%)	36.9	32.9	52.9	58.4	<0.001
	Women (%)	63.1	67.1	47.1	41.6	
Race/Ethnicity	Mexican-American (%)	23.5	19.4	16.5	14.4	<0.001
	Non-Hispanic White (%)	42.2	46.5	48.9	55.5	
	Non-Hispanic Black (%)	17.8	19.6	21.8	21.5	
Education level: <9th grade, (%)		15.6	14.3	12.5	8.5	<0.001
Smoking (%)		22.3	21.0	25.8	23.6	<0.001
Body Mass Index (kg/m²)¹		27.2±0.2	28.5±0.2	29.3±0.2	29.6±0.2	<0.001
Diabetes (%)		9.0	10.6	12.4	13.2	<0.001
Hypertension (%)		18.5	19.5	20.1	18.9	<0.001
Obesity (%)		31.8	35.1	39.4	41.2	<0.001

Metabolic syndrome (%)	29.1	31.2	32.3	30.5	<0.001
Dietary cholesterol (g/day) ²	108.0 (66.0-173.0)	182.0 (124.0-285.0)	252.0 (176.0-392.0)	383.0 (263.5-594.0)	<0.001
Protein (g/day) ²	45.15 (32.67-59.72)	63.22 (50.48- 80.03)	79.59 (64.63-98.95)	109.68 (89.06 -137.36)	<0.001
Carbohydrate (g/day) ²	161.17 (117.57- 215.46)	212.57 (165.41-269.91)	254.77 (197.18-321.40)	328.01 (254.02 -421.27)	<0.001
<i>Groups across the quartiles were compared by either chi-square or analysis of variance. Values expressed as mean ± standard error of mean ¹ or median and (25th-75th) ². NHANES: National Health and Nutrition Examination Surveys. *refers only to dietary fats.</i>					

Table 2. Multivariable-adjusted hazard ratios (95% confidence intervals) for mortality across the categories of different fats in NHANES 1999-2010 study.

		Total Fat			<i>p-value</i>	SFA			<i>p-value</i>
		Q2	Q3	Q4		Q2	Q3	Q4	
		MUFA		PUFA					
		Q2	Q3	Q4		Q2	Q3	Q4	
Total mortality	Model 1	1.10 (0.58-2.13)	1.02 (0.29,3.96)	0.84 (0.81,0.88)	0.235	1.40 (1.35,1.57)	1.68 (1.61,1.75)	1.73 (1.66,1.80)	<0.001
	Model 2	0.98 (0.50-1.90)	0.89 (0.84,0.95)	0.90 (0.82,0.99)	0.015	1.05 (1.02,1.08)	1.14 (1.10,1.19)	1.08 (1.04,1.11)	<0.001
CHD	Model 1	1.03 (0.97, 1.09)	0.99 (0.95, 1.02)	0.88 (0.86,0.89)	0.292	1.02 (0.84, 1.24)	0.93 (0.77, 1.14)	1.42 (1.27,1.96)	<0.001
	Model 2	1.13 (0.97, 1.31)	0.93 (0.79, 1.10)	1.07 (0.99,1.15)	0.421	1.09 (0.93, 1.29)	1.06 (1.03-1.09)	1.13 (1.06,1.21)	<0.001
Stroke	Model 1	0.97 (0.91, 1.02)	1.01 (0.95, 1.08)	1.04 (0.96,1.12)	0.362	1.18 (0.95, 1.46)	0.88 (0.66, 1.17)	1.23 (1.11,1.43)	0.012
	Model 2	1.03 (0.78, 1.35)	1.24 (0.62,2.48)	1.05 (0.99,1.11)	0.665	1.02 (0.84, 1.22)	1.05 (1.02-1.08)	1.11 (1.07, 1.15)	<0.001
T2D	Model 1	1.10 (0.84, 1.44)	1.06 (0.80, 1.39)	1.18 (0.90,1.56)	0.462	0.88 (0.73, 1.06)	0.97 (0.81, 1.17)	1.20 (1.11,1.36)	0.182
	Model 2	0.99 (0.97, 1.02)	0.98 (0.95, 1.01)	1.05 (0.77,1.43)	0.582	0.99 (0.77, 1.26)	1.05 (0.99, 1.12)	1.04 (1.01, 1.08)	0.241
		MUFA				PUFA			
		Q2	Q3	Q4		Q2	Q3	Q4	
Total mortality	Model 1	1.02 (0.29,3.96)	0.85(0.80, 0.91)	0.71(0.69, 0.74)	0.024	0.95 (0.49-1.96)	0.72 (0.62-0.83)	0.68 (0.65-0.70)	<0.001
	Model 2	0.98 (0.50,1.90)	0.93(0.79, 1.10)	0.91(0.76,1.09)	0.362	0.85 (0.79-0.91)	0.78 (0.72- 0.84)	0.81 (0.78-0.84)	<0.001
CHD	Model 1	0.95 (0.59, 1.52)	0.93(0.59, 1.48)	1.04(0.84,1.29)	0.526	1.12 (0.52-1.35)	0.70 (0.60-0.82)	0.57 (0.55, 0.60)	<0.001
	Model 2	0.91 (0.75, 1.11)	0.87(0.61,1.23)	0.95(0.77,1.17)	0.421	0.83 (0.77- 0.89)	0.87 (0.73-1.04)	0.75 (0.62-0.90)	0.016
Stroke	Model 1	1.04 (0.72,1.49)	0.82(0.51, 1.32)	0.86(0.53,1.40)	0.625	1.19 (0.93-1.53)	1.01 (0.91-1.11)	0.83 (0.72-0.96)	0.382
	Model 2	1.02 (0.64,1.64)	1.20(0.79, 1.83)	0.80(0.61,1.06)	0.692	0.96 (0.79-1.16)	0.81 (0.71-0.91)	0.85 (0.80-0.91)	<0.001
T2D	Model 1	0.91 (0.57, 1.45)	0.84(0.66, 1.07)	0.88(0.73, 1.06)	0.452	0.96 (0.79, 1.17)	0.85 (0.79, 0.91)	0.78 (0.72,0.84)	<0.001
	Model 2	0.94 (0.55, 1.59)	0.89(0.74, 1.06)	1.14(0.93, 1.39)	0.762	0.99 (0.77, 1.26)	0.88 (0.66, 1.17)	0.84 (0.79,0.92)	0.162

Model 1: Adjusted for age, race, education, marital status, poverty to income ratio, physical activity and smoking.

Model 2: Adjusted for age, race, education, marital status, poverty to income ratio, physical activity, smoking, alcohol consumption, dietary cholesterol, body mass index and hypertension, non-HDL cholesterol.

ABBREVIATIONS: MUFA: mono-unsaturated fatty acids, SFA: saturated fatty acids, PUFA: polyunsaturated fatty acids, CHD: coronary heart disease, T2D: diabetes, HDL: high-density lipoprotein, NHANES: National Health and Nutrition Examination Surveys.

P-values describe any difference across all 4 levels.

Supplemental Table 1. Full search terms and strategy for papers indexed in investigated databases.

No	Concept	Search terms
1	Fat	"Dietary fat" [Text Word] OR "fatty acids" [Text Word] OR "monounsaturated fat" [Text Word] OR "MUFA" [Text Word] OR "polyunsaturated fat" [Text Word] OR "PUFA" [Text Word] OR "unsaturated fatty acids" [Text Word] OR "SFA" OR "olive oil" [Text Word] OR "oleic acid" [Text Word] OR "Mediterranean diet" [Text Word] OR ω -3 FA" [Mesh] OR "omega-3 FA" [Mesh] OR "omega-3 OR "fish oils" [Mesh]
2	Mortality	mortality[tiab] OR death[tiab] OR dead[tiab] OR all-cause[tiab] OR all cause[tiab] OR fatal[tiab] OR event[tiab] OR nonfatal[tiab] OR non-fatal[tiab] OR Mortality[MeSH:NoExp] OR mortality[MeSH subheading]
3	Cardiovascular	cardiovascular[tiab] OR vascular[tiab] OR CVD[tiab] OR Cardiovascular Diseases[Mesh:NoExp]
4	Stroke	cerebrovascular[tiab] OR stroke[tiab] OR TIA[tiab] OR transient ischemic*[tiab] OR CVA[tiab] OR cerebral infarction[tiab] OR Cerebrovascular accident [MeSH:NoExp] OR stroke [MeSH:NoExp]
5	Diabetes	diabetes mellitus[MeSH Terms] OR diabetes OR mellitus OR diabetes mellitus OR diabetes mellitus, type 2[MeSH Terms] OR type 2 diabetes mellitus OR type 2 diabetes OR diabetes mellitus[MeSH Terms] OR diabetes AND mellitus OR diabetes mellitus OR diabetes OR diabetes insipidus[MeSH Terms] OR diabetes AND insipidus OR diabetes insipidus
6	Combination	#2 OR #3 OR #4 OR #5
7	Combination Exposure And Outcome	#1 AND #6
8	Limit	Rats[Mesh:NoExp]) OR Mice[Mesh:NoExp]) OR rat[Title/Abstract]) OR rats[Title/Abstract]) OR mouse[Title/Abstract]) OR mice[Title/Abstract]) OR vivo[Title/Abstract]) OR vitro[Title/Abstract])
9	Limit	#7 NOT #8

For Supplemental Table 2:

NEWCASTLE – OTTAWA QUALITY ASSESSMENT SCALE COHORT STUDIES

Note: A study can be awarded a maximum of one star for each numbered item within the Selection and Outcome categories. A maximum of two stars can be given for Comparability.

Selection

1) Representativeness of the exposed cohort

- a) truly representative of the average *healthy adults* in the community★
- b) somewhat representative of the average *healthy adults* in the community ★
- c) selected group of users *e.g. nurses, volunteers, vegetarian*
- d) no description of the derivation of the cohort

2) Selection of the non-exposed cohort

- a) drawn from the same community as the exposed cohort★
- b) drawn from a different source
- c) no description of the derivation of the non-exposed cohort

3) Ascertainment of exposure

- a) secure record (*e.g. 7 day food diary*) ★
- b) structured interview/ ≥ 2 *dietary recalls/diet history/ food frequency questionnaire validated for dairy components* ★
- c) written self-report (*e.g. <2 dietary recalls/non-validated food frequency questionnaire or not reported whether food frequency questionnaire was validated*)
- d) no description

4) Demonstration that outcome of interest was not present at start of study

- a) yes★
- b) no

Comparability

1) Comparability of cohorts on the basis of the design or analysis

- a) study controls for *age, sex, smoking, total energy intake, and body mass index*★
- b) study controls for any additional factor (*e.g. physical activity, alcohol intake, family history of diabetes, dietary factors*) ★

Outcome

1) Assessment of outcome

- a) independent blind assessment (*e.g. clinical diagnosis/complete medical information available*).
★
- b) record linkage/*medical record or validated self-report* ★
- c) non-validated self-report

d) no description

2) Was follow-up long enough for outcomes to occur

a) yes/ *follow up period for outcome of interest is 10 years or over* ★

b) no

3) Adequacy of follow-up of cohorts

a) complete follow-up - all subjects accounted for ★

b) subjects lost to follow-up unlikely to introduce bias - small number lost $\leq 20\%$ follow-up, or description provided of those lost ★

c) follow-up rate $< 80\%$ or no description of those lost

d) no statement

Supplemental Table 2. Quality assessment of cohort studies which included in meta-analysis.

<i>Studies</i>	Selection				Comparability	Outcome			Total score
	Representativeness of the exposed cohort	Selection of the non-exposed cohort	Ascertainment of exposure	Outcome not present at start of study	Comparability of cohorts on the basis of the design or analysis	Assessment of outcome	Follow-up long enough for outcomes to occur	Adequacy of follow-up of cohorts	
<i>Dilis 2012 (1)</i>	C	A★	B★	A★	A★ B★	B★	B	B★	7
<i>Esrey 1996 (2)</i>	C	A★	B★	A★	A★	B★	A★	B★	7
<i>Nagata 2012 (3)</i>	C	A★	B★	A★	A★ B★	B★	A★	B★	8
<i>Pietinen 1997 (4)</i>	C	A★	B★	A★	A★	B★	A★	B★	7
<i>Solfrizzi 2005 (5)</i>	C	A★	B★	A★	A★ B★	B★	A★	B★	8
<i>Trichopoulou 2005 (6)</i>	C	A★	B★	A★	A★ B★	B★	A★	B★	8
<i>Trichopoulou 2003 (7)</i>	C	A★	B★	A★	A★ B★	B★	A★	B★	8
<i>Xu 2006 (8)</i>	C	A★	B★	A★	A★ B★	B★	B	B★	7
<i>Ascherio 1996 (9)</i>	C	A★	B★	A★	A★	B★	A★	B★	7
<i>Boniface 2002</i>	C	A★	B★	A★	A★ B★	B★	A★	B★	8

(10)									
<i>Goldbourt 1993 (11)</i>	C	A★	B★	A★	A★ B★	B★	A★	B★	8
<i>Leosdottir 2005 (12)</i>	C	A★	B★	A★	A★ B★	B★	A★	B★	8
<i>Mann 1997 (13)</i>	C	A★	B★	A★	A★	B★	A★	B★	7
<i>McGee 1985 (14)</i>	C	A★	B★	A★	A★ B★	B★	B	B★	7
<i>Sauvaget 2004 (15)</i>	C	A★	B★	A★	A★ B★	B★	B	B★	7
<i>Tucker 2005 (16)</i>	C	A★	B★	A★	A★ B★	B★	B	B★	7
<i>Misirli 2012 (17)</i>	C	A★	B★	A★	A★ B★	B★	B	B★	7
<i>Trichopoulou 2006 (18)</i>	C	A★	B★	A★	A★	B★	A★	B★	7
<i>Chien 2013(19)</i>	C	A★	B★	A★	A★ B★	B★	B	B★	7
<i>Wakai 2014 (20)</i>	C	A★	B★	A★	A★ B★	B★	B	B★	7
<i>Shekelle 1981 (21)</i>	C	A★	B★	A★	A★	B★	A★	B★	7
<i>Kushi 1985 (22)</i>	C	A★	B★	A★	A★	B★	A★	B★	7
<i>Dehghan 2017 (23)</i>	C	A★	B★	A★	A★ B★	B★	B	B★	7
<i>Guasch-Ferré 2015 (24)</i>	C	A★	B★	A★	A★ B★	B★	B	B★	7
<i>Wang 2017 (25)</i>	C	A★	B★	A★	A★ B★	B★	B	B★	7
<i>Zhuang 2019 (26)</i>	C	A★	B★	A★	A★ B★	B★	B	B★	7
<i>Zhuang 2019 (27)</i>	C	A★	B★	A★	A★ B★	B★	B	B★	7

Supplemental Table 3. Characteristics of the prospective cohort studies included in the present meta-analysis.

Author, year and reference	Country, region/cohort	Age	Follow-Up Time (Years)	No. of cases	No. of subjects	Exposure	Definition of the exposure	Outcome	Main confounders
<i>Dilis, 2012 (1)</i>	European Prospective Into Cancer and Nutrition GRE	20-86	10	240	23,929	MUFA, SFA, PUFA	per 1 standard deviation increment	CHD mortality	Age, BMI, height, PA, years of schooling and energy intake entered, alcohol consumption, smoking status and arterial blood pressure
<i>Esrey, 1996 (2)</i>	Lipid Research Clinics Prevalence Study USA	30-79	12.4	92	4,546	Total, MUFA, PUFA, SFA	1% increase in fatty acids intake	CHD mortality	Age, sex, energy intake, serum lipids, systolic blood pressure, cigarette smoking, BMI, glucose intolerance
<i>Nagata, 2012 (3)</i>	Takayama study JAP	≥35	16	4616	28,356	Total, MUFA, PUFA, SFA	Q4 vs Q1	All-cause mortality CVD mortality	Age, non-alcohol energy, and protein expressed as percentage of non-alcohol energy and was additionally adjusted for fat subtypes expressed as percentage of non-alcohol energy as appropriate, height, BMI, PA, smoking status, alcohol intake, education, marital status, menopausal status, histories of diabetes and hypertension, and intakes of fruits, vegetables, and dietary fibre
<i>Pietinen, 1997 (4)</i>	Finland Finish Alpha-Tocopherol, Beta-Carotene Cancer Prevention Study	50-69	6.1	635	21,930	MUFA, SFA	Q5 vs Q1	CHD mortality	Age, smoking, BMI, blood pressure, energy intake, alcohol, education, PA
<i>Solfrizzi, 2005 (5)</i>	Italian Longitudinal Study on Aging ITA	65-84	8.5	91	278	MUFA	Not reported	All-cause mortality	Age, sex, waist-hip ratio, smoking status, Charlson co-morbidity index, and total energy intake
<i>Trichopoulos, 2005 (6)</i>	European Prospective Into Cancer and Nutrition Elderly EU	>60	7.4	-	74,607	MUFA, PUFA, SFA	Not reported	All-cause mortality	Age, sex, diabetes mellitus at baseline, waist to hip ratio, BMI, educational achievement, smoking status, PA at occupation, PA score at leisure, alcohol intake, and total energy intake

Trichopoulos, 2003 (7)	European Prospective Into Cancer and Nutrition GRE	20-86	3.7	275	22,043	MUFA, PUFA, SFA	per 1 standard deviation increment	All-cause mortality	Age, sex, waist-to-hip ratio, energy expenditure score, years of education, smoking status, BMI, and total energy intake
Xu, 2006 (8)	Strong Heart Study USA	47-79	7.2	138	2,938	Total, MUFA, PUFA, SFA	Not reported	CHD mortality	Age, sex, energy, study centre, diabetes status, BMI, HDL, LDL, triacylglycerol, Smoking, alcohol consumption, hypertension, percentage of energy from protein, and total energy intake
Ascherio, 1996 (9)	United States Health Professionals' Follow-up Study	40-75	6	229	43,757	-	Q5 vs. Q1	40-75 CHD Deaths	Age, energy, BMI, smoking habits, alcohol consumption, physical activity, history of hypertension or high blood cholesterol, family history of MI <60-years, profession, dietary fibre
Boniface, 2002 (10)	United Kingdom	40-75	16	155	2,676	Total, SFA	Q5 vs. Q1	CHD Deaths	Age, alcohol consumption, smoking habits, frequency of exercise, BMI, blood pressure, social class, deprivation index
Goldbourt, 1993 (11)	Israel	40+	23	3473, 1098	11,876	-	Q5 vs. Q1	Total deaths and CHD deaths	Age, presence of initial malignant disease,
Leosdottir 2005 (12)	Sweden Malmo Diet and Cancer Study	≈59	6.6	1250, 339	28,098	Total, MUFA, PUFA, SFA	Q4 vs. Q1	Total and CVD deaths	Age, alcohol, smoking, social class, marital status, physical activity, BMI, fibre intake, monounsaturated and polyunsaturated fats, total fat intake for ratio between unsaturated and saturated fats
Mann, 1997 (13)	United Kingdom	16-79	13.3	64, 392	10,802	SFA	Q3 vs. Q1	CHD deaths, all-cause mortality	Age, sex, smoking habit, social class
McGee, 1985 (14)	United States Honolulu Heart Program	45-60+	10	542; 61, 99	7,088	SFA	≥50 g vs. <10g SFA	Total deaths; stroke deaths; CHD deaths	Age, SBP, BMI, physical activity, cigarettes smoked
Sauvaaget, 2004 (15)	Japan Adult Health Study (subcohort of the Life Span Study)	35-89	14	90	3,731	SFA, MUFA, PUFA	Q3 vs Q1	Stroke deaths	Radiation dose, city of exposure, smoking and drinking status, BMI, history of hypertension and diabetes, fruit and vegetable intake, markers of nutritional status, lymphocyte count,

									blood cholesterol level, total energy intake, weight
Tucker, 2005 (16)	United States Baltimore Longitudinal Study of Aging	34-80	18	71	501	SFA	Not reported	CHD deaths	Age at first visit, total energy intake, BMI, smoking, alcohol use, dietary supplements, physical activity
Misirli, 2012 (17)	Greece European Prospective Investigation into Cancer and Nutrition (EPIC Study), Greek-EPIC Cohort	25-67	10.6	196	23,601	MUFA, SFA	12 g/day increments	Stroke deaths	Sex, age, smoking status, BMI, education, physical activity level, energy intake, hypertension, diabetes mellitus, Mediterranean diet score
Trichopoulos, 2006 (18)	Greece European Prospective Investigation into Cancer and Nutrition (EPIC Study), Greek-EPIC Cohort	NR	4.5	80	1013	MUFA, SFA, PUFA	Not reported	CVD deaths	Gender, age, educational level, smoking, waist-to-height, hip circumference, physical activity, metabolic activity task score, total energy intake, treatment with insulin, treatment for hypertension at enrolment, treatment for hypercholesterolaemia at enrolment, flour, flakes, starches, pasta, rice, other grain, bread, crisp bread, rusks, breakfast cereals, biscuit, dough, pastry
Chien, 2013 (19)	Japan (Chin-Shan)	≈60	≈10	568	3,602	SFA	56.3% vs. 45% of total fat	Total deaths	Age, gender, BMI, smoking, drinking, marital status, education level, job and sports activity, hypertension, diabetes, LDL-C and HDL-C
Wakai, 2014 (20)	Japan Collaborative Cohort Study JAP	≈56	19.3	11,656 ; 1,665	58,672	Total, MUFA, PUFA, SFA	7.3 vs. 3.0% E for SFA	Total and CVD death	Age, area, education, smoking, alcohol consumption, BMI, sleep duration, walking, consumption of vegetables and fruit, and total energy intake
Shekelle, 1981 (21)	U.S.A. (Western Electric Study)	40-55	19	215	1,900	SFA	1-unit increase	CHD deaths	Age, SBP, smoking, serum cholesterol, alcohol, BMI, ancestry
Kushi, 1985 (22)	U.S.A.-Ireland (Ireland-Boston Heart Study)	40-60	23	110	1,001	SFA	Top 3rd vs. Bottom 3rd	CHD deaths	Age, cohort, SBP, serum cholesterol, LVH, smoking, alcohol
Dehghan, 2017 (23)	The Prospective Urban Rural Epidemiology	35-70	7.4	5796	135,335	Total, MUFA, PUFA, SFA	Q5 vs. Q1	Total deaths and CVD deaths	Age and sex, education, smoking, physical activity, waist to hip ratio, history of diabetes, urban or rural location, and total energy intake.

Guasch-Ferré, 2015 (24)	PREvención con DIeta MEDiterránea	67	6	414,336	7,038	Total, MUFA, PUFA, SFA	Q5 vs. Q1	Total deaths and CVD deaths	Age, sex, total energy intake, alcohol intake, fiber, protein intake, BMI, smoking status, educational level, leisure-time physical activity, baseline diabetes, hypertension, hypercholesterolemia, family history of coronary heart disease, use of antihypertensive medication
Wang, 2017 (25)	Nurses' Health Study and the Health Professionals Follow-up Study	-	32 and 26	20314, 33304	83,349	Total, MUFA, PUFA, SFA	Q4 vs. Q1	Total deaths	Age, Caucasian, marital status body-mass index, physical activity, smoking status, alcohol consumption, multivitamin use, vitamin E supplementation use, current aspirin use, family history of myocardial infarction, family history of diabetes, family history of cancer, history of hypertension, history of hypercholesterolemia, intakes of total energy, dietary cholesterol and percentage of energy intake from dietary protein, and menopausal status and hormone use in women.
Zhuang, 2019 (26)	China Health and Nutrition Survey	-	14	1,007	14,117	PUFA	Q4 vs. Q1	Total deaths	Age, gender, BMI, education, marital status, residence, physical activity, smoking, alcohol drinking status, history of hypertension, history of diabetes, intake of total energy, vegetables, fruits, red meat and saturated fat.
Zhuang, 2019 (27)	NIH-AARP Diet and Health Study	50-71	16	129,328	521,120	MUFA, PUFA, SFA	Q4 vs. Q1	CVD, Total, T2D,	Multivariable models were adjusted for age, gender, BMI, race, education, marital status, household income, smoking, alcohol, physical activity, multi-vitamin use, aspirin use, history of hypertension, history of hypercholesterolemia, perceived health condition, history of heart disease, stroke, diabetes, and cancer at baseline, hormones use for women, intake of total energy, percentages of energy intake from protein, and remaining fatty acids where appropriate.

Mazidi, 2019*	United States NHANES; 1999-2010	48.5	12	24,144	6,581	Total, MUFA, PUFA, SFA	Q4 vs. Q1	Total, CHD, stroke, T2D	Age, race, education, marital status, poverty to income ratio, physical activity and smoking, alcohol consumption, dietary cholesterol, body mass index, hypertension, and non-HDL cholesterol
----------------------	---------------------------------	------	----	--------	-------	------------------------	-----------	-------------------------	------------------------------------------------------------------------------------------------------------------------------------------------------------------------------------------------

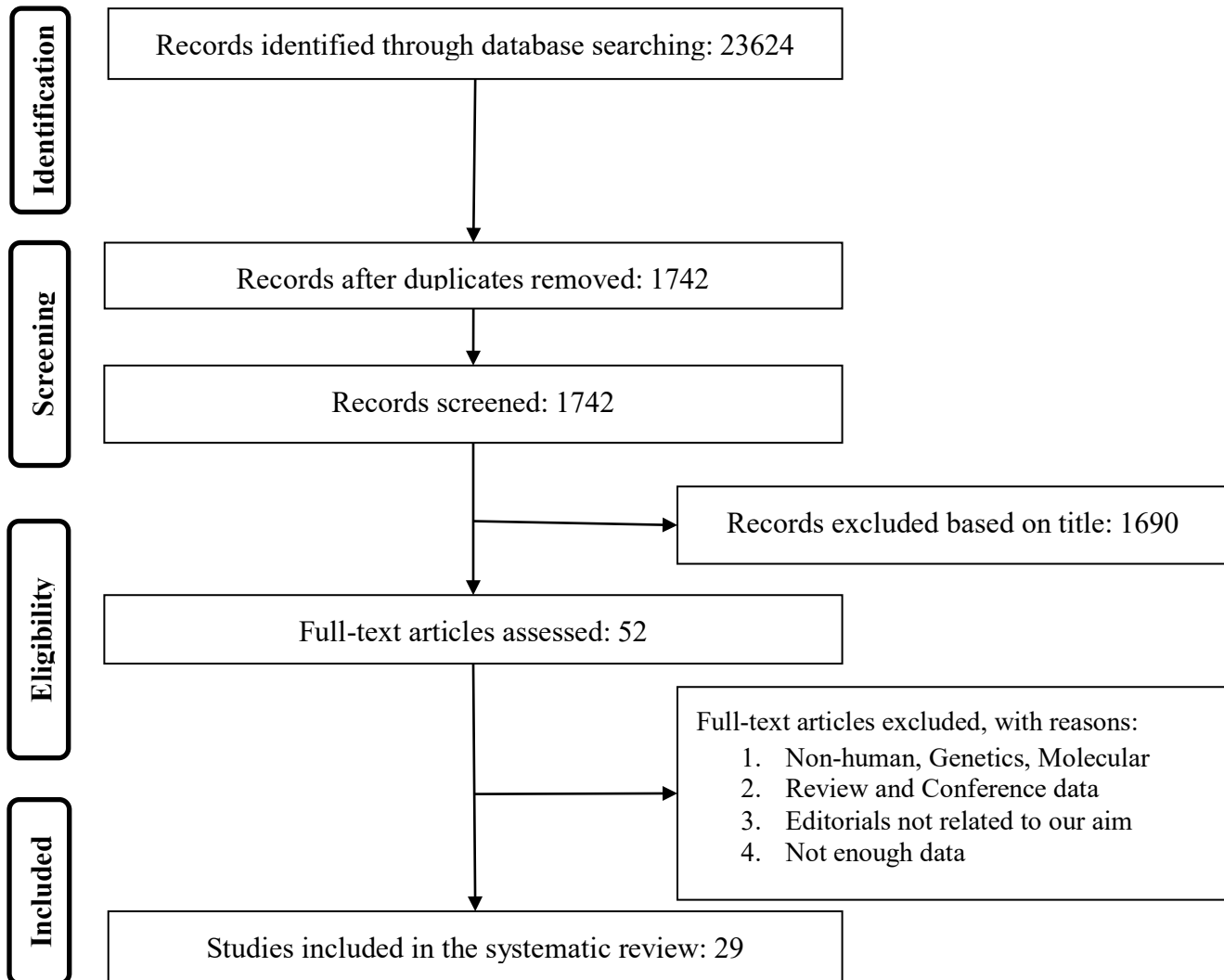
* Mazidi NHANES cohort study from the recent paper.

REFERENCES (FOR SUPPLEMENTAL TABLES 2 & 3):

1. Dilis V, Katsoulis M, Lagiou P, Trichopoulos D, Naska A, Trichopoulou A. Mediterranean diet and CHD: the Greek European Prospective Investigation into Cancer and Nutrition cohort. *The British journal of nutrition*. 2012;108(4):699-709.
2. Esrey KL, Joseph L, Grover SA. Relationship between dietary intake and coronary heart disease mortality: lipid research clinics prevalence follow-up study. *Journal of clinical epidemiology*. 1996;49(2):211-6.
3. Nagata C, Nakamura K, Wada K, Oba S, Tsuji M, Tamai Y, et al. Total fat intake is associated with decreased mortality in Japanese men but not in women. *The Journal of nutrition*. 2012;142(9):1713-9.
4. Pietinen P, Ascherio A, Korhonen P, Hartman AM, Willett WC, Albanes D, et al. Intake of fatty acids and risk of coronary heart disease in a cohort of Finnish men. The Alpha-Tocopherol, Beta-Carotene Cancer Prevention Study. *American journal of epidemiology*. 1997;145(10):876-87.
5. Solfrizzi V, D'Introno A, Colacicco AM, Capurso C, Palasciano R, Capurso S, et al. Unsaturated fatty acids intake and all-causes mortality: a 8.5-year follow-up of the Italian Longitudinal Study on Aging. *Experimental gerontology*. 2005;40(4):335-43.
6. Trichopoulou A, Orfanos P, Norat T, Bueno-de-Mesquita B, Ocke MC, Peeters PH, et al. Modified Mediterranean diet and survival: EPIC-elderly prospective cohort study. *BMJ (Clinical research ed)*. 2005;330(7498):991.
7. Trichopoulou A, Costacou T, Bamia C, Trichopoulos D. Adherence to a Mediterranean diet and survival in a Greek population. *The New England journal of medicine*. 2003;348(26):2599-608.
8. Xu J, Eilat-Adar S, Loria C, Goldbourt U, Howard BV, Fabsitz RR, et al. Dietary fat intake and risk of coronary heart disease: the Strong Heart Study. *The American journal of clinical nutrition*. 2006;84(4):894-902.
9. Ascherio A, Rimm EB, Giovannucci EL, Spiegelman D, Stampfer M, Willett WC. Dietary fat and risk of coronary heart disease in men: cohort follow up study in the United States. *BMJ (Clinical research ed)*. 1996;313(7049):84-90.
10. Boniface DR, Tefft ME. Dietary fats and 16-year coronary heart disease mortality in a cohort of men and women in Great Britain. *European journal of clinical nutrition*. 2002;56(8):786-92.
11. Goldbourt U, Yaari S, Medalie JH. Factors predictive of long-term coronary heart disease mortality among 10,059 male Israeli civil servants and municipal employees. A 23-year mortality follow-up in the Israeli Ischemic Heart Disease Study. *Cardiology*. 1993;82(2-3):100-21.
12. Leosdottir M, Nilsson PM, Nilsson JA, Mansson H, Berglund G. Dietary fat intake and early mortality patterns--data from The Malmo Diet and Cancer Study. *Journal of internal medicine*. 2005;258(2):153-65.

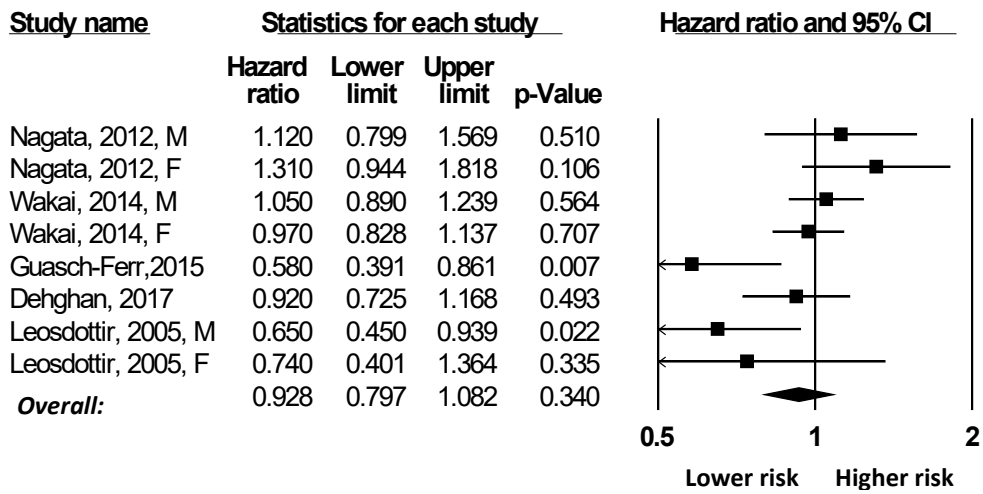
13. Mann JI, Appleby PN, Key TJ, Thorogood M. Dietary determinants of ischaemic heart disease in health conscious individuals. *Heart (British Cardiac Society)*. 1997;78(5):450-5.
14. McGee D, Reed D, Stemmerman G, Rhoads G, Yano K, Feinleib M. The relationship of dietary fat and cholesterol to mortality in 10 years: the Honolulu Heart Program. *International journal of epidemiology*. 1985;14(1):97-105.
15. Sauvaget C, Nagano J, Hayashi M, Yamada M. Animal protein, animal fat, and cholesterol intakes and risk of cerebral infarction mortality in the adult health study. *Stroke*. 2004;35(7):1531-7.
16. Tucker KL, Hallfrisch J, Qiao N, Muller D, Andres R, Fleg JL. The combination of high fruit and vegetable and low saturated fat intakes is more protective against mortality in aging men than is either alone: the Baltimore Longitudinal Study of Aging. *The Journal of nutrition*. 2005;135(3):556-61.
17. Misirli G, Benetou V, Laggiou P, Bamia C, Trichopoulos D, Trichopoulou A. Relation of the traditional Mediterranean diet to cerebrovascular disease in a Mediterranean population. *American journal of epidemiology*. 2012;176(12):1185-92.
18. Trichopoulou A, Psaltopoulou T, Orfanos P, Trichopoulos D. Diet and physical activity in relation to overall mortality amongst adult diabetics in a general population cohort. *Journal of internal medicine*. 2006;259(6):583-91.
19. Chien KL, Lin HJ, Hsu HC, Chen PC, Su TC, Chen MF, et al. Comparison of predictive performance of various fatty acids for the risk of cardiovascular disease events and all-cause deaths in a community-based cohort. *Atherosclerosis*. 2013;230(1):140-7.
20. Wakai K, Naito M, Date C, Iso H, Tamakoshi A. Dietary intakes of fat and total mortality among Japanese populations with a low fat intake: the Japan Collaborative Cohort (JACC) Study. *Nutrition & metabolism*. 2014;11(1):12.
21. Shekelle RB, Shryock AM, Paul O, Lepper M, Stamler J, Liu S, et al. Diet, serum cholesterol, and death from coronary heart disease. The Western Electric study. *The New England journal of medicine*. 1981;304(2):65-70.
22. Kushi LH, Lew RA, Stare FJ, Ellison CR, el Lozy M, Bourke G, et al. Diet and 20-year mortality from coronary heart disease. The Ireland-Boston Diet-Heart Study. *The New England journal of medicine*. 1985;312(13):811-8.
23. Dehghan M, Mente A, Zhang X, Swaminathan S, Li W, Mohan V, et al. Associations of fats and carbohydrate intake with cardiovascular disease and mortality in 18 countries from five continents (PURE): a prospective cohort study. *Lancet (London, England)*. 2017;390(10107):2050-62.
24. Guasch-Ferre M, Babio N, Martinez-Gonzalez MA, Corella D, Ros E, Martin-Pelaez S, et al. Dietary fat intake and risk of cardiovascular disease and all-cause mortality in a population at high risk of cardiovascular disease. *The American journal of clinical nutrition*. 2015;102(6):1563-73.
25. Wang DD, Li Y, Chiuve SE, Stampfer MJ, Manson JE, Rimm EB, et al. Association of Specific Dietary Fats With Total and Cause-Specific Mortality. *JAMA internal medicine*. 2016;176(8):1134-45.
26. Zhuang P, Wang W, Wang J, Zhang Y, Jiao J. Polyunsaturated fatty acids intake, omega-6/omega-3 ratio and mortality: Findings from two independent nationwide cohorts. *Clinical nutrition (Edinburgh, Scotland)*. 2019;38(2):848-855.
27. Zhuang P, Zhang Y, He W, Chen X, Chen J, He L, Mao L, Wu F, Jiao J. Dietary Fats in Relation to Total and Cause-Specific Mortality in a Prospective Cohort of 521 120 Individuals With 16 Years of Follow-Up. *Circ Res*. 2019;124(5):757-768.

Supplemental Figure 1. Flow chart diagram of studies selection.



Supplemental Figure 2. Forest plot of total fat consumption and cardiovascular disease mortality.

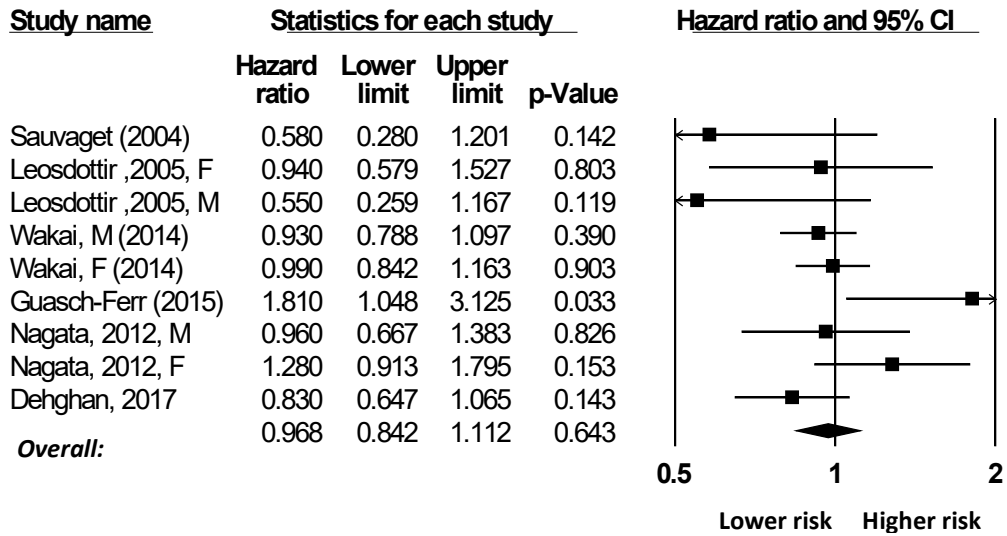
Meta Analysis



Meta Analysis

Supplemental Figure 4. Forest plot of saturated fatty acids (SFA) consumption and cardiovascular disease mortality.

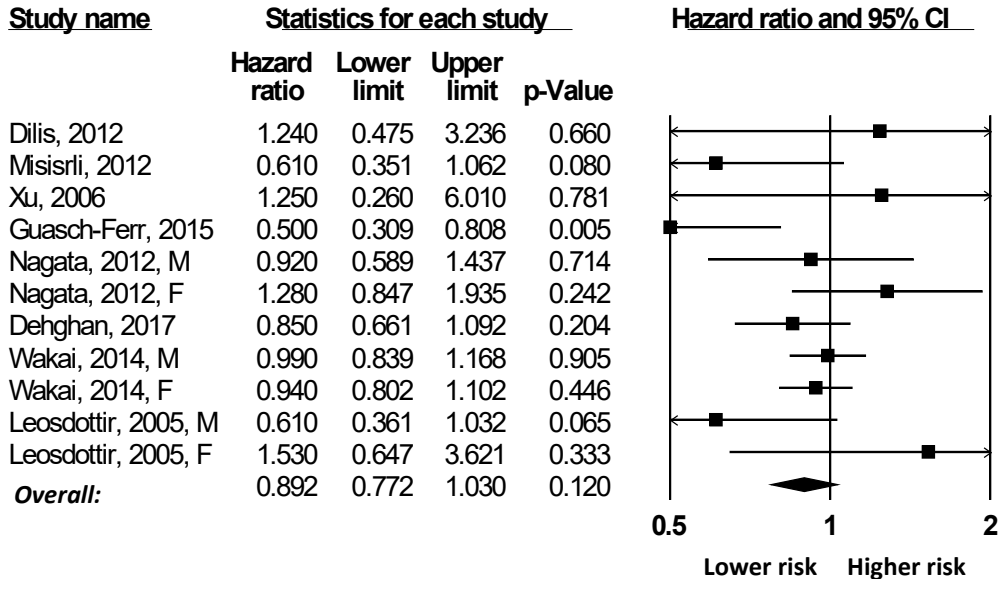
Meta Analysis



Meta Analysis

Supplemental Figure 5. Forest plot of monounsaturated fatty acids (MUFA) consumption and cardiovascular disease mortality.

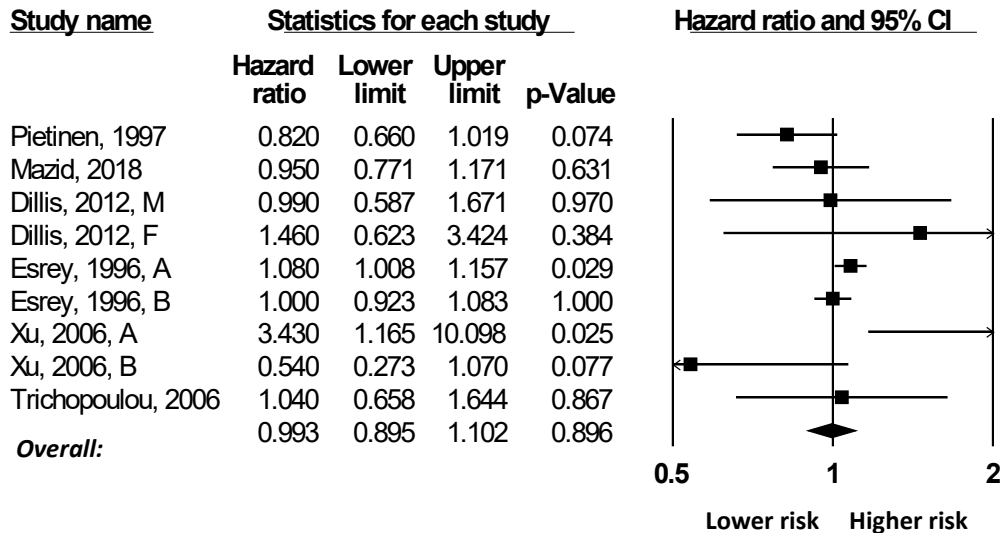
Meta Analysis



Meta Analysis

Supplemental Figure 6. Forest plot of monounsaturated fatty acids (MUFA) consumption and coronary heart disease mortality.

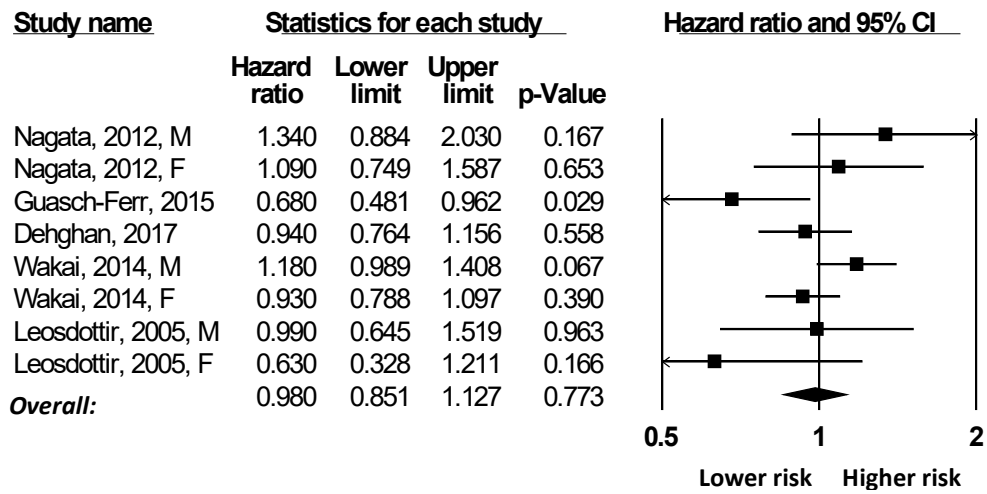
Meta Analysis



Meta Analysis

Supplemental Figure 7. Forest plot of polyunsaturated fatty acids (PUFA) consumption and cardiovascular disease mortality.

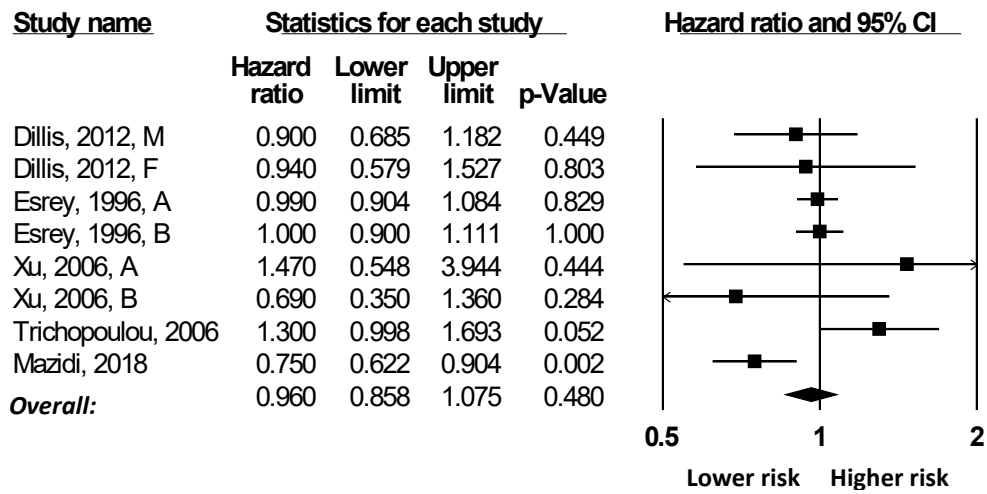
Meta Analysis



Meta Analysis

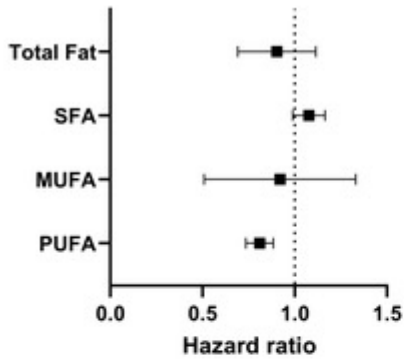
Supplemental Figure 8. Forest plot of polyunsaturated fatty acids (PUFA) consumption and coronary heart disease mortality.

Meta Analysis

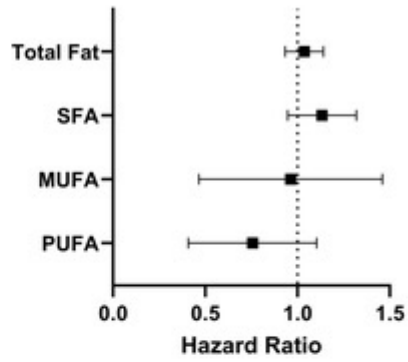


Meta Analysis

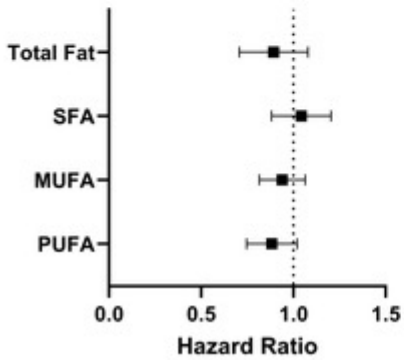
Total Mortality (NHANES)



CHD Mortality (NHANES)



Total Mortality (Meta-analysis)



CHD Mortality (Meta-analysis)

