

Shvartzvald, Y, Li, Z, Udalski, A, Gould, A, Sumi, T, Street, RA, Novati, SC, Hundertmark, M, Bozza, V, Beichman, C, Bryden, G, Carey, S, Drummond, J, Fausnaugh, M, Gaudi, BS, Henderson, CB, Tan, TG, Wibking, B, Pogge, RW, Yee, JC, Zhu, W, Tsapras, Y, Bachelet, E, Dominik, M, Bramich, DM, Cassan, A, Figuera Jaimes, R, Horne, K, Ranc, C, Schmidt, R, Snodgrass, C, Wambsganss, J, Steele, IA, Menzies, J, Mao, S, Poleski, R, Pawlak, M, Szymański, MK, Skowron, J, Mróz, P, Kozłowski, S, Wyrzykowski, L, Pietrukowicz, P, Soszyński, I, Ulaczyk, K, Abe, F, Asakura, Y, Barry, RK, Bennett, DP, Bhattacharya, A, Bond, IA, Freeman, M, Hirao, Y, Itow, Y, Koshimoto, N, Li, MCA, Ling, CH, Masuda, K, Fukui, A, Matsubara, Y, Muraki, Y, Nagakane, M, Nishioka, T, Ohnishi, K, Oyokawa, H, Rattenbury, NJ, Saito, T, Sharan, A, Sullivan, DJ, Suzuki, D, Tristram, PJ, Yonehara, A, Jorgensen, UG, Burgdorf, MJ, Ciceri, S, D'Ago, G, Evans, DF, Hinse, TC, Kains, N, Kerins, E, Korhonen, H, Mancini, L, Popovas, A, Rabus, M, Rahvar, S and Scarpetta, G

**THE FIRST SIMULTANEOUS MICROLENSING OBSERVATIONS by TWO SPACE TELESCOPES: SPITZER and SWIFT REVEAL A BROWN DWARF in EVENT OGLE-2015-BLG-1319**

<http://researchonline.ljmu.ac.uk/id/eprint/6260/>

## Article

**Citation** (please note it is advisable to refer to the publisher's version if you intend to cite from this work)

**Shvartzvald, Y, Li, Z, Udalski, A, Gould, A, Sumi, T, Street, RA, Novati, SC, Hundertmark, M, Bozza, V, Beichman, C, Bryden, G, Carey, S, Drummond, J, Fausnaugh, M, Gaudi, BS, Henderson, CB, Tan, TG, Wibking, B, Pogge, RW, Yee, JC, Zhu, W, Tsapras, Y, Bachelet, E, Dominik, M, Bramich, DM, Cassan.**

LJMU has developed [LJMU Research Online](http://researchonline.ljmu.ac.uk/) for users to access the research output of the University more effectively. Copyright © and Moral Rights for the papers on this site are retained by

<http://researchonline.ljmu.ac.uk/>

the individual authors and/or other copyright owners. Users may download and/or print one copy of any article(s) in LJMU Research Online to facilitate their private study or for non-commercial research. You may not engage in further distribution of the material or use it for any profit-making activities or any commercial gain.

The version presented here may differ from the published version or from the version of the record. Please see the repository URL above for details on accessing the published version and note that access may require a subscription.

For more information please contact [researchonline@ljmu.ac.uk](mailto:researchonline@ljmu.ac.uk)



THE FIRST SIMULTANEOUS MICROLENSING OBSERVATIONS BY TWO SPACE TELESCOPES: *SPITZER*  
AND *SWIFT* REVEAL A BROWN DWARF IN EVENT OGLE-2015-BLG-1319

Y. SHVARTZVALD<sup>1,54</sup>, Z. LI<sup>2</sup>, A. UDALSKI<sup>3</sup>, A. GOULD<sup>4</sup>, T. SUMI<sup>5</sup>, R. A. STREET<sup>2</sup>,  
S. CALCHI NOVATI<sup>6,7</sup>, M. HUNDERTMARK<sup>8</sup>, V. BOZZA<sup>7,9</sup>,  
C. BEICHMAN<sup>10</sup>, G. BRYDEN<sup>1</sup>, S. CAREY<sup>11</sup>, J. DRUMMOND<sup>12</sup>, M. FAUSNAUGH<sup>4</sup>, B. S. GAUDI<sup>4</sup>, C. B. HENDERSON<sup>1,54</sup>, T. G. TAN<sup>13</sup>,  
B. WIBKING<sup>4</sup>, R. W. POGGE<sup>4</sup>, J. C. YEE<sup>14,55</sup>, W. ZHU<sup>4</sup>  
(SPITZER TEAM),  
Y. TSAPRAS<sup>15</sup>, E. BACHELET<sup>2,16</sup>, M. DOMINIK<sup>17,56</sup>, D. M. BRAMICH<sup>16</sup>, A. CASSAN<sup>18</sup>, R. FIGUERA JAIMES<sup>17,19</sup>, K. HORNE<sup>17</sup>,  
C. RANC<sup>18</sup>, R. SCHMIDT<sup>15</sup>, C. SNODGRASS<sup>20</sup>, J. WAMBSGANSS<sup>15</sup>, I. A. STEELE<sup>21</sup>, J. MENZIES<sup>22</sup>, S. MAO<sup>23,24,25</sup>  
(ROBONET),  
R. POLESKI<sup>3,4</sup>, M. PAWLAK<sup>3</sup>, M. K. SZYMAŃSKI<sup>3</sup>, J. SKOWRON<sup>3</sup>, P. MRÓZ<sup>3</sup>, S. KOZŁOWSKI<sup>3</sup>, Ł. WYRZYKOWSKI<sup>3</sup>, P. PIETRUKOWICZ<sup>3</sup>,  
I. SOSZYŃSKI<sup>3</sup>, K. ULACZYK<sup>26</sup>  
(OGLE GROUP),  
F. ABE<sup>27</sup>, Y. ASAKURA<sup>27</sup>, R. K. BARRY<sup>28</sup>, D. P. BENNETT<sup>29,30</sup>, A. BHATTACHARYA<sup>29</sup>, I. A. BOND<sup>31</sup>, M. FREEMAN<sup>32</sup>, Y. HIRAO<sup>5</sup>,  
Y. ITOW<sup>27</sup>, N. KOSHIMOTO<sup>5</sup>, M. C. A. LI<sup>32</sup>, C. H. LING<sup>31</sup>, K. MASUDA<sup>27</sup>, A. FUKUI<sup>33</sup>, Y. MATSUBARA<sup>27</sup>, Y. MURAKI<sup>27</sup>,  
M. NAGAKANE<sup>5</sup>, T. NISHIOKA<sup>34</sup>, K. OHNISHI<sup>35</sup>, H. OYOKAWA<sup>27</sup>, N. J. RATTENBURY<sup>32</sup>, TO. SAITO<sup>36</sup>, A. SHARAN<sup>32</sup>, D. J. SULLIVAN<sup>37</sup>,  
D. SUZUKI<sup>29,30</sup>, P. J. TRISTRAM<sup>38</sup>, A. YONEHARA<sup>34</sup>  
(MOA GROUP),  
U. G. JØRGENSEN<sup>8</sup>, M. J. BURGDORF<sup>39</sup>, S. CICERI<sup>40</sup>, G. D'AGO<sup>7,9,41</sup>, D. F. EVANS<sup>42</sup>, T. C. HINSE<sup>43</sup>, N. KAINS<sup>25</sup>, E. KERINS<sup>25</sup>,  
H. KORHONEN<sup>8,44,45</sup>, L. MANCINI<sup>40</sup>, A. POPOVAS<sup>8</sup>, M. RABUS<sup>46</sup>, S. RAHVAR<sup>47</sup>, G. SCARPETTA<sup>7,41</sup>, J. SKOTTFELT<sup>8,48</sup>,  
J. SOUTHWORTH<sup>42</sup>, N. PEIXINHO<sup>49,50</sup>, P. VERMA<sup>41</sup>  
(MINDSTEP),  
AND  
B. SBARUFATTI<sup>51,52</sup>, J. A. KENNEA<sup>52</sup>, AND N. GEHRELS<sup>53</sup>  
(SWIFT)

<sup>1</sup> Jet Propulsion Laboratory, California Institute of Technology, 4800 Oak Grove Drive, Pasadena, CA 91109, USA

<sup>2</sup> Las Cumbres Observatory Global Telescope Network, 6740 Cortona Drive, suite 102, Goleta, CA 93117, USA

<sup>3</sup> Warsaw University Observatory, Al. Ujazdowskie 4, 00-478 Warszawa, Poland

<sup>4</sup> Department of Astronomy, Ohio State University, 140 W. 18th Avenue, Columbus, OH 43210, USA

<sup>5</sup> Department of Earth and Space Science, Osaka University, Osaka 560-0043, Japan

<sup>6</sup> Infrared Processing and Analysis Center and NASA Exoplanet Science Institute, California Institute of Technology, Pasadena, CA 91125, USA

<sup>7</sup> Dipartimento di Fisica "E.R. Caianiello," Università di Salerno, Via Giovanni Paolo II 132, I-84084, Fisciano, Italy

<sup>8</sup> Niels Bohr Institute & Centre for Star and Planet Formation, University of Copenhagen, Øster Voldgade 5, DK-1350 Copenhagen, Denmark

<sup>9</sup> Istituto Nazionale di Fisica Nucleare, Sezione di Napoli, Napoli, Italy

<sup>10</sup> NASA Exoplanet Science Institute, California Institute of Technology, Pasadena, CA 91125, USA

<sup>11</sup> Spitzer Science Center, MS 220-6, California Institute of Technology, Pasadena, CA, USA

<sup>12</sup> Possum Observatory, Patutahi, New Zealand

<sup>13</sup> Perth Exoplanet Survey Telescope, Perth, Australia

<sup>14</sup> Harvard-Smithsonian Center for Astrophysics, 60 Garden Street, Cambridge, MA 02138, USA

<sup>15</sup> Astronomisches Rechen-Institut, Zentrum für Astronomie der Universität Heidelberg (ZAH), D-69120 Heidelberg, Germany

<sup>16</sup> Qatar Environment and Energy Research Institute(QEERI), HBKU, Qatar Foundation, Doha, Qatar

<sup>17</sup> SUPA, School of Physics & Astronomy, University of St Andrews, North Haugh, St Andrews KY16 9SS, UK

<sup>18</sup> Sorbonne Universités, UPMC Univ Paris 6 et CNRS, UMR 7095, Institut d'Astrophysique de Paris, 98 bis bd Arago, F-75014 Paris, France

<sup>19</sup> European Southern Observatory, Karl-Schwarzschild-Str. 2, D-85748 Garching bei München, Germany

<sup>20</sup> Planetary and Space Sciences, Department of Physical Sciences, The Open University, Milton Keynes, MK7 6AA, UK

<sup>21</sup> Astrophysics Research Institute, Liverpool John Moores University, Liverpool CH41 1LD, UK

<sup>22</sup> South African Astronomical Observatory, P.O. Box 9, Observatory 7935, South Africa

<sup>23</sup> Physics Department and Tsinghua Centre for Astrophysics, Tsinghua University, Beijing 100084, China

<sup>24</sup> National Astronomical Observatories, Chinese Academy of Sciences, 20A Datun Road, Chaoyang District, Beijing 100012, China

<sup>25</sup> Jodrell Bank Centre for Astrophysics, School of Physics and Astronomy, The University of Manchester, Oxford Road, Manchester M13 9PL, UK

<sup>26</sup> Department of Physics, University of Warwick, Gibbet Hill Road, Coventry, CV4 7AL, UK

<sup>27</sup> Institute for Space-Earth Environmental Research, Nagoya University, Nagoya 464-8601, Japan

<sup>28</sup> Astrophysics Science Division, NASA Goddard Space Flight Center, Greenbelt, MD 20771, USA

<sup>29</sup> University of Notre Dame, Department of Physics, 225 Nieuwland Science Hall, Notre Dame, IN 46556-5670, USA

<sup>30</sup> Laboratory for Exoplanets and Stellar Astrophysics, NASA/Goddard Space Flight Center, Greenbelt, MD 20771, USA

<sup>31</sup> Institute of Information and Mathematical Sciences, Massey University, Private Bag 102-904, North Shore Mail Centre, Auckland, New Zealand

<sup>32</sup> Department of Physics, University of Auckland, Private Bag 92-019, Auckland 1001, New Zealand

<sup>33</sup> Okayama Astrophysical Observatory, National Astronomical Observatory of Japan, Asakuchi, Okayama 719-0232, Japan

<sup>34</sup> Department of Physics, Faculty of Science, Kyoto Sangyo University, 603-8555 Kyoto, Japan

<sup>35</sup> Nagano National College of Technology, Nagano 381-8550, Japan

<sup>36</sup> Tokyo Metropolitan College of Aeronautics, Tokyo 116-8523, Japan

<sup>37</sup> School of Chemical and Physical Sciences, Victoria University, Wellington, New Zealand

<sup>38</sup> Mt. John University Observatory, P.O. Box 56, Lake Tekapo 8770, New Zealand

<sup>39</sup> Meteorologisches Institut, Universität Hamburg, Bundesstraße 55, D-20146 Hamburg, Germany

<sup>40</sup> Max Planck Institute for Astronomy, Königstuhl 17, D-69117 Heidelberg, Germany

<sup>41</sup> Istituto Internazionale per gli Alti Studi Scientifici (IIASS), Via G. Pellegrino 19, I-84019 Vietri sul Mare (SA), Italy

<sup>42</sup> Astrophysics Group, Keele University, Staffordshire, ST5 5BG, UK

<sup>43</sup> Korea Astronomy & Space Science Institute, 776 Daedukdae-ro, Yuseong-gu, 305-348 Daejeon, Korea

<sup>44</sup> Finnish Centre for Astronomy with ESO (FINCA), Väisälantie 20, FI-21500 Piikkiö, Finland

<sup>45</sup> Niels Bohr Institute & Dark Cosmology Centre, University of Copenhagen, Juliane Mariesvej 30, DK-2100—Copenhagen Ø, Denmark

<sup>46</sup> Instituto de Astrofísica, Facultad de Física, Pontificia Universidad Católica de Chile, Av. Vicuña Mackenna 4860, 7820436 Macul, Santiago, Chile

<sup>47</sup> Department of Physics, Sharif University of Technology, P.O. Box 11155-9161 Tehran, Iran

<sup>48</sup> Centre for Electronic Imaging, Department of Physical Sciences, The Open University, Milton Keynes, MK7 6AA, UK

<sup>49</sup> CITEUC—Centre for Earth and Space Science Research of the University of Coimbra, Observatório Geofísico e Astronómico da U.C., 3030-004 Coimbra, Portugal

<sup>50</sup> Unidad de Astronomía, Fac. de Cs. Básicas, Universidad de Antofagasta, Avda U. de Antofagasta 02800, Antofagasta, Chile

<sup>51</sup> Istituto Nazionale di Astrofisica, Osservatorio Astronomico di Brera, Via E. Bianchi 46, I-23807, Merate, Italy

<sup>52</sup> Department of Astronomy and Astrophysics, Pennsylvania State University, University Park, PA, 16802, USA

<sup>53</sup> Astrophysics Science Division, NASA Goddard Space Flight Center, Greenbelt, MD, 20740, USA

Received 2016 June 7; revised 2016 August 24; accepted 2016 August 24; published 2016 November 7

## ABSTRACT

Simultaneous observations of microlensing events from multiple locations allow for the breaking of degeneracies between the physical properties of the lensing system, specifically by exploring different regions of the lens plane and by directly measuring the “microlens parallax.” We report the discovery of a 30–65 $M_J$  brown dwarf orbiting a K dwarf in the microlensing event OGLE-2015-BLG-1319. The system is located at a distance of  $\sim 5$  kpc toward the Galactic Bulge. The event was observed by several ground-based groups as well as by *Spitzer* and *Swift*, allowing a measurement of the physical properties. However, the event is still subject to an eight-fold degeneracy, in particular the well-known close-wide degeneracy, and thus the projected separation between the two lens components is either  $\sim 0.25$  au or  $\sim 45$  au. This is the first microlensing event observed by *Swift*, with the UVOT camera. We study the region of microlensing parameter space to which *Swift* is sensitive, finding that though *Swift* could not measure the microlens parallax with respect to ground-based observations for this event, it can be important for other events. Specifically, it is important for detecting nearby brown dwarfs and free-floating planets in high magnification events.

*Key words:* binaries: general – brown dwarfs – Galaxy: bulge – gravitational lensing: micro

## 1. INTRODUCTION

The *Spitzer* 2014 and 2015 microlensing campaigns have revolutionized the field of microlensing. The satellite observations of over 200 events that were discovered and monitored simultaneously by ground-based surveys facilitated the systematic measurement of the microlens parallax,  $\pi_E$ , for the majority of the events—a crucial quantity for determining the physical properties of the lensing system. Simultaneous ground and space observations of microlensing events were conducted only twice prior to these campaigns, once with *Spitzer* (Dong et al. 2007), and once with the *Deep Impact* (or *EPOXI*) spacecraft (Muraki et al. 2011). The 2014–2015 *Spitzer* campaigns have already led to the detection of two planets (Udalski et al. 2015b; Street et al. 2016), the first caustic-crossing binary-lens event with a satellite parallax measurement (Zhu et al. 2015b), a massive remnant in a wide binary (Shvartzvald et al. 2015), and mass measurements of isolated objects (Zhu et al. 2016)—one of which is a brown dwarf (BD). In addition, *Spitzer* observations allowed Bozza et al. (2016) to break a strong planet/binary degeneracy in the event OGLE-2015-BLG-1212, finding that the companion is a low-mass star and not a planet. These campaigns are the first steps for measuring the Galactic distribution of planets (Calchi Novati et al. 2015a), a demographic regime that can currently only be explored by microlensing.

A microlensing event is characterized by the Einstein timescale  $t_E$ , which combines three physical properties of the

lens-source system,

$$t_E = \frac{\theta_E}{\mu}; \quad \theta_E^2 \equiv \kappa M \pi_{\text{rel}}; \\ \kappa \equiv \frac{4G}{c^2 \text{au}} \simeq 8.14 \frac{\text{mas}}{M_\odot}. \quad (1)$$

Here  $\theta_E$  is the angular Einstein radius,  $M$  is the total lens mass,  $\pi_{\text{rel}} = \text{au}(D_L^{-1} - D_S^{-1})$  is the lens-source relative parallax, and  $\mu$  is the lens-source relative proper motion. Although the timescale will be approximately the same, the light curve of a microlensing event as seen from two (or more) separated observers (e.g., from Earth and space) is different, due to either a different observed source trajectory, a time shift, or both (Refsdal 1966; Gould 1994). Since the physical separation between the two observers ( $D_\perp$ ) is known, this directly yields the microlens parallax,

$$\pi_E = \frac{\text{au}}{D_\perp} (\Delta\tau, \Delta\beta); \quad \Delta\tau = \frac{t_{0,\text{sat}} - t_{0,\oplus}}{t_E}; \\ \Delta\beta = \pm u_{0,\text{sat}} - \pm u_{0,\oplus}, \quad (2)$$

where the subscripts indicate parameters as measured from the satellite and Earth. Here,  $(t_0, u_0, t_E)$  are the standard “Paczynski” point-lens microlensing parameters: time of minimal separation between the source and the lens, the impact parameter in angular Einstein radius units, and the event timescale. Different observed source trajectories will increase the probability of detecting companions to the lens star by exploring different regions of the lens plane (Zhu et al. 2015a). However, due to the symmetry of the problem it usually suffers

<sup>54</sup> NASA Postdoctoral Program Fellow.

<sup>55</sup> Sagan Fellow.

<sup>56</sup> Royal Society University Research Fellow.

from a four-fold degeneracy (in  $\Delta\beta$ , see Equation (2)). As pointed out by Refsdal (1966) and Gould (1994), observing the same event from a third location can resolve this problem. If the third observer is not on the projected line (with respect to the lensing event) defined by the first two observers, it can completely remove the microlens parallax degeneracy, both in magnitude and direction. Even if the third observer is on the same projected line but has a different separation than the first two, it will likely view a different source trajectory. In addition, it will be sensitive to different microlens parallax magnitudes (if the separation is too large, the magnification for one of the observers can be too low for the event to be detected).

Here we present an analysis of OGLE-2015-BLG-1319. This is the first microlensing event observed by two space telescopes, *Spitzer* and *Swift*, and from the ground. The ground light-curve shows a short anomaly over the peak, due to a companion, and the parallax measurement from *Spitzer* allows us to determine that it is a BD. This additional BD detection provides supporting evidence for a conclusion previously drawn from microlensing studies: that BDs around main sequence stars are relatively common at separations of a few au (Shvartzvald et al. 2016) as compared with their rarity at closer separations according to radial-velocity studies (e.g., Grether & Lineweaver 2006). The small separation of *Swift* from Earth did not allow for an independent measurement of the microlens parallax for this specific event. However, as we discuss further below, it might be possible to measure the microlens parallax with *Swift* alone in other events.

The paper is arranged as follows: we describe the observations from the ground-based observatories and those from *Spitzer* and *Swift* in Section 2. In Section 3, we present the microlensing model and try to resolve the degeneracy of the projected separation between the companion and its host. In Section 4, we use the color–magnitude diagram (CMD) to characterize the source properties and combine them with the microlensing model to derive the lens physical properties. We study the feasibility of using *Swift* to measure the microlens parallax in Section 5. Finally, in Section 6 we summarize our results.

## 2. OBSERVATIONAL DATA AND REDUCTION

### 2.1. Ground Observations

The microlensing event OGLE-2015-BLG-1319 was first alerted on 2015 June 11, 19:44 UT by the Optical Gravitational Lens Experiment (OGLE), which operates the 1.3 m Warsaw telescope at the Las Campanas Observatory in Chile (Udalski et al. 2015a) using the OGLE Early Warning System (EWS, Udalski 2003). At equatorial coordinates R.A. = 17:57:46.4, decl. =  $-32:28:19.9$  (J2000.0), the event lies in OGLE field BLG508, which has a relatively low observing cadence of 0.5–1 times per night. Most observations were in the *I* band, with additional sparse *V* band observations for source characterization. OGLE photometry was extracted by their standard difference image analysis (DIA) procedure (Udalski 2003).

The event was also observed by the Microlensing Observations in Astrophysics (MOA) collaboration, who operate the 1.8 m MOA-II telescope at the Mt. John Observatory in New Zealand (Sumi et al. 2003); they designated the event as MOA-2015-BLG-292. Observations were in the “MOA-Red” filter (a wide *R/I* filter), with a cadence of 1–5 times per night. The

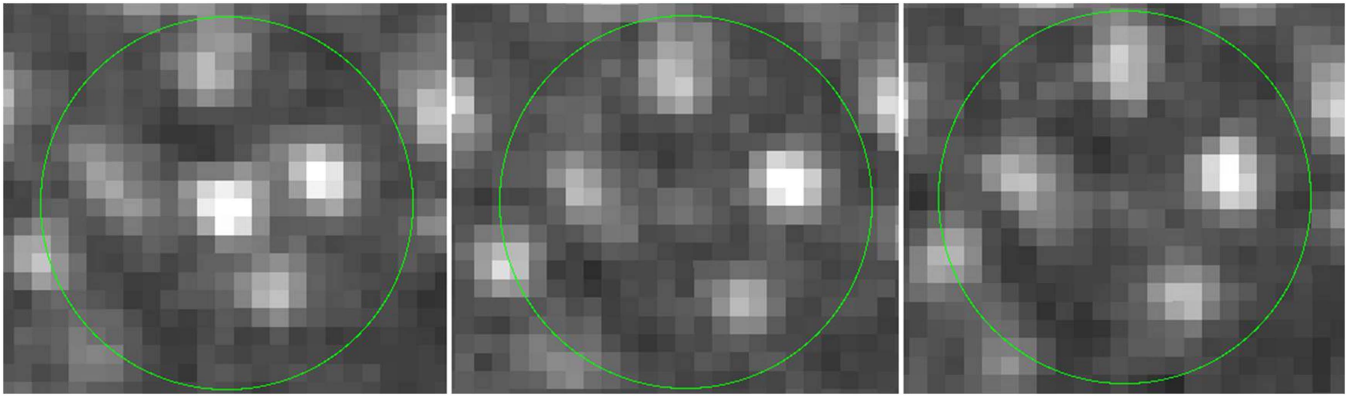
MOA data were reduced using their routine DIA procedure (Bond et al. 2001).

The *Spitzer* team selected and announced OGLE-2015-BLG-1319 as a *Spitzer* target on June 25 UT 2:00 (HJD' = 7198.58) and aggressively alerted it as being an extreme high-magnification event. Based on these alerts, sustained follow-up observations were carried out. First, the RoboNet team observed the event using five telescopes from the Las Cumbres Observatory Global Telescope (LCOGT) in Chile, South Africa, and Australia. These observations were designed to increase the planet sensitivity by obtaining continuous coverage of the entire peak region. Most observations were in the *I* band, and a few were made with the *V* band. While these were not used for the source color characterization, they allow for a better coverage of the light curve. LCOGT data were reduced using DanDIA (Bramich et al. 2008). The MiNDSTeP team followed the event using the Danish 1.54 m telescope hosted at ESO’s La Silla observatory in Chile, which is equipped with the first routinely operated multi-color instrument providing Lucky Imaging photometry (Skottfelt et al. 2015). The camera was operated at a 10 Hz rate and lucky exposures were calibrated and tip-tilt corrected as described by Harpsøe et al. (2012). The stacked images were used for obtaining photometry with a modified version of DanDIA. In addition, the event was observed by the Microlensing Follow Up Network ( $\mu$ FUN) 0.35 m telescope at the Possum Observatory in New Zealand and by the  $\mu$ FUN 0.3 m Perth Exoplanet Survey Telescope (PEST) in Australia, both with a “clear” filter. These observations densely cover the first “bump” (see inset of Figure 2). Finally, the event was also observed by the  $\mu$ FUN 1.3 m SMARTS telescope at CTIO, with ANDICAM, giving simultaneous *I* band and *H* band measurements (a few additional *V* band observations were taken). This multi-filter imaging was important for the source characterization, complementing the OGLE observations. All  $\mu$ FUN data were reduced using DoPhot (Schechter et al. 1993).

In summary, the results reported here depend overwhelmingly on follow-up data, both to cover the anomaly and for color information of the source, which makes it possible to both detect and characterize the lens companion.

### 2.2. *Spitzer* Observations

The *Spitzer* team modeled and predicted the evolution of all ongoing microlensing events, on a daily basis, prior to and during the six weeks of the 2015 campaign. The team realized the high-magnification nature of OGLE-2015-BLG-1319, and thus its potential high planet sensitivity, from preliminary OGLE and MOA data, when the event was only 1.4 mag brighter than the baseline (ultimately getting 4.4 mag brighter than base—see Figure 2). Yee et al. (2015) describe the *Spitzer* selection criteria and observing strategy for such events. The set of objective criteria is needed to both minimize selection biases, in particular regarding the presence or absence of a companion to the primary lens, and to maximize the sensitivity for detecting possible companions as well as measuring the microlens parallax. One of the conditions to ensure high sensitivity is that the event is observed with high cadence by either the OGLE or KMTNet survey (criterion B2). However, since the event was in a low-cadence OGLE field and was not observed at all by KMTNet, it failed to meet criterion B2, and thus could not be selected objectively. In addition, the estimated flux in *Spitzer*’s *L* band on the first date of possible



**Figure 1.** Co-added UVOT images for the three epochs when the event was observed with *Swift* (on June 27, 28, 29, from left to right). This is the first time *Swift* observed a microlensing event while it was ongoing, with magnifications of 530, 90, and 50. The event is clearly seen and detected only on the first epoch, when it was  $V = 16.6$ .

observations (six days later on  $\text{HJD}' = 7205$ ) and beyond, assuming the ground-based light curve, was too faint,  $L_{\text{eff}} > 15.9$  (see definition in Yee et al. 2015). Nevertheless, the team selected the event subjectively, due to its predicted high magnification, immediately announced it as a *Spitzer* target, and urged the follow-up teams to monitor the event in order to have high planet sensitivity.

OGLE-2015-BLG-1319 was observed by *Spitzer* during the final two weeks of the 2015 campaign (July 3–19), with a cadence of 1–2 times per day, and with each epoch composed of six 30 s dithered exposures. The observations covered the peak of the event as seen from *Spitzer*, due to the microlens parallax, when the ground-based light curve was already almost back to baseline. The event was indeed faint in *Spitzer* images, reaching  $L_{\text{eff}} = 15.9$ , fainter than the assumed sensitivity limit. However, the data were reduced using the new algorithm for *Spitzer* photometry in crowded fields (Calchi Novati et al. 2015b), resulting in the required high precision. It is important to note that while the peak  $L_{\text{eff}}$  was similar to the estimation based on the ground-based light curve, it occurred at a later time and with lower magnification than predicted. However, since the source color  $(I - L)_{S,0} = 1.35$  (see Section 4.1 below) was redder than the default assumption for dwarfs of 0.8 by Yee et al. (2015), coincidentally, the final brightness was similar.

### 2.3. *Swift* Observations

Based on preliminary estimates for the peak magnification of  $A \sim 1000$  and first hints of anomaly over peak, R.A. Street requested target of opportunity (ToO) observations of OGLE-2015-BLG-1319 with *Swift*. Observations were approved and carried out on June 27, 28, and 29 using the UVOT camera with the  $V$  filter. Each of the three *Swift* epochs is composed of a sequence of three exposures (200, 200, and 90 s). For the first epoch we use each image separately, while for each of the other two epochs we use a co-added image. The photometry was extracted using DoPhot.

This is the first microlensing event observed with *Swift*. Figure 1 shows the co-added image for each epoch. The event is clearly seen in the first epoch, when the event was highly magnified as seen from Earth, and is marginally detected in the other two epochs, when the event was almost 2 mag fainter. While these observations cannot set significant constraints on the microlensing model, in particular on  $\pi_E$ , they allow us to

study the feasibility of *Swift* observations for microlensing events, as we do below in Section 5.

## 3. LIGHT CURVE ANALYSIS

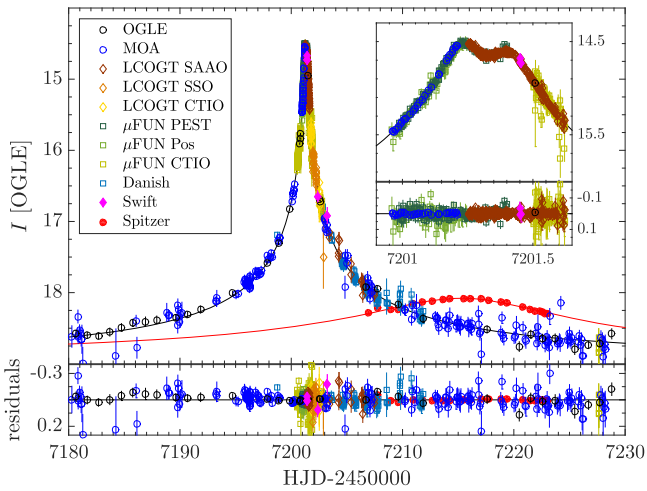
### 3.1. Ground-only Microlensing Model

The light curve of the event, shown in Figure 2, has one “double-bump” anomaly over its peak, while the remainder follows a standard point-lens high-magnification profile. These features suggest that the source passes near a central caustic with two possible topologies. Either the source approached close to two cusps of a binary lens system (see Figure 3), or three cusps of a planetary system, on the opposite side of the planet. The caustic structure for the planetary regime (mass ratio  $q \ll 1$ ) is significantly different than that for the binary regime ( $q \sim 1$ ). However, due to degeneracies with other parameters such as the source trajectory and the source size, these two models can sometimes lead to a somehow similar light curve. Han & Gaudi (2008) studied the planet/binary degeneracy in such double-bump high-magnification events and showed that if the source passes close enough to the cusps, the light curve will have a characteristic feature distinguishing between the two solutions: the planetary model will show a flattening between the two bumps while in the binary model it will have a concave shape. The smooth curved interval between the two bumps seen in OGLE-2015-BLG-1319 thus clearly favors the binary solution.

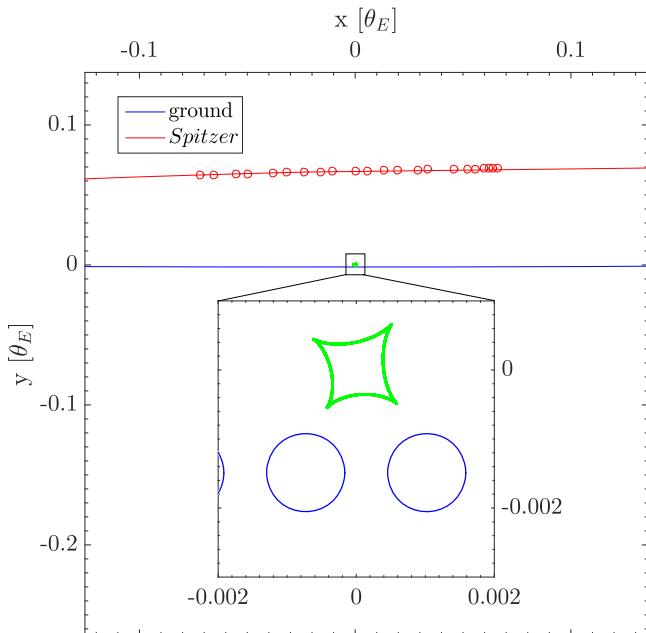
A standard binary-lens microlensing model requires seven parameters to calculate the magnification as a function of time,  $A(t)$ . In addition to the point-lens parameters,  $(t_0, u_0, t_E)$ , and the scaled finite source size,  $\rho = \theta_*/\theta_E$  (where  $\theta_*$  is the angular source size), the companion introduces three parameters. These are the mass ratio between the companion and the primary,  $q$ , their scaled, instantaneous projected separation in units of the angular Einstein radius,  $s$ , and an angle,  $\alpha$ , measured counterclockwise from the source trajectory to the companion in the lens plane. For a given model geometry, two flux parameters are assigned for each data set,  $i$ , accounting for the source flux, which is being magnified,  $f_{s,i}$ , and any additional blend flux,  $f_{b,i}$ :

$$f_i(t) = f_{s,i}A(t) + f_{b,i}. \quad (3)$$

A Markov-chain Monte-Carlo (MCMC) search of parameter space, with a grid of initial angles of  $0^\circ < \alpha < 360^\circ$ , for both



**Figure 2.** Light curve of OGLE-2015-BLG-1319 with data from *Spitzer* (red), *Swift* (magenta), and various ground-based observatories (see interior figure labels). All observations are aligned to the OGLE magnitude scale, such that equal “magnitude” reflects equal magnification. The inset shows the anomalous region over the peak of the event, revealing the presence of the companion BD. The clear offset, both in time and magnification, of the *Spitzer* data with respect to the ground data, allows us to measure the microlens parallax  $\pi_E$ .



**Figure 3.** The source trajectory as seen from the ground (blue) and from *Spitzer* (red) relative to the central caustic (green), for the wide  $-/+$  configuration. The coordinate system is defined such that the  $x$ -axis is parallel to the source trajectory as seen from the ground at  $t_0$ . The red circles represent the source position at the times of *Spitzer* observations. The inset is a zoomed-in version showing the source angular size (blue circles) for two (arbitrary) times, as seen from the ground. For solutions with  $u_0 > 0$ , the caustic structure and the ground trajectory will be (approximately) mirrored, and for solutions with  $\pi_{E,N} < 0$  the *Spitzer* trajectory will be (approximately) mirrored, in both cases around the  $y$ -axis.

the planetary and binary configurations was used to find the best fit model. For the initial modeling we use only  $u_0 > 0$  and  $s > 1$  to avoid possible degenerate solutions, which we address and consider later. For each set of trial parameters, we fit points far from the two bumps using the hexadecapole, quadrupole, or monopole approximations (Gould 2008; Pejcha & Heyrovský 2009), while for points near and during the anomaly

we use contour integration (Gould & Gauchere 1997). For the finite source size we assume a limb-darkened profile with linear coefficients of  $u(V, I, H) = [0.782, 0.607, 0.425]$  (Claret 2000), based on the source type derived below in Section 4.1. We find, as expected, that the binary model is favored over the planetary model by  $\Delta\chi^2 \sim 300$ . Dominik (1999) and Bozza (2000) predicted that for Chang–Refsdal lenses<sup>57</sup> there is an  $s \leftrightarrow s^{-1}$  wide/close degeneracy. We search and find a close solution ( $s \simeq 0.08$ ) that is degenerate with the wide one ( $s \simeq 14$ ).

The mass ratio we find is  $q \simeq 0.08$ , suggestive of a low-mass stellar companion.<sup>58</sup> The event was highly magnified ( $A_{\max} \simeq 725$ ) and had a long timescale of  $t_E \approx 100$  d. For such a timescale, the orbital microlens parallax due to the orbital motion of Earth can be detected, but since it was heavily blended ( $f_s/f_b \simeq 0.1$ ) it appeared magnified for only  $\sim 40$  days. Including orbital parallax improves the fit by only  $\Delta\chi^2 = 6$ , which is within our systematic uncertainty range (see Section 3.3), and thus we do not consider it as a detection. We next include *Spitzer* data and fully constrain the microlens parallax.

### 3.2. Satellite Microlens Parallax

Observations by two fixed observers introduce a four-fold degeneracy, as discussed above. If the microlens parallax can be detected separately in one or both of the observed light curves, due to the orbital motion of the observer, the degeneracy can be completely removed. Since the orbital parallax is only marginally detected in the ground-based light curve of OGLE-2015-BLG-1319, when including *Spitzer*, we re-run the MCMC process with all four possibilities for both the wide and close configurations. In addition, we include a constraint on the *Spitzer* source flux,  $f_{s,Spitzer}$ , derived from color–color regression (see Section 4.1 below).

The results find that indeed the eight possible solutions, the four-fold satellite degeneracy for both the wide and close configurations, are fully degenerate. The microlens parallax components are roughly the same for all solutions since the impact parameter,  $u_0$ , as seen from Earth, is very close to zero (see Gould & Yee 2012). The magnitude of the microlens parallax is  $\pi_E \simeq 0.12$ , with 4%–8% uncertainty. As a check, we run the chains without the *Spitzer* flux constraint. We find that the median  $I_{OGLE} - L_{Spitzer}$  source color is similar to the one derived from regression, but the source-color distribution from the MCMC is wider than the constraint uncertainty. This would imply a 10%–20% uncertainty on the microlens parallax magnitude in the absence of the flux constraint.

Table 1 summarizes the derived model parameters and their uncertainties for the eight degenerate solutions. While in this case, the satellite degeneracy has no importance for the physical interpretation of the lensing system, the wide/close degeneracy suggests two significantly different orbital periods for the companion. We next try to resolve this degeneracy.

<sup>57</sup> A Chang–Refsdal lens refers to the case where the magnification field can be approximated by a single lens mass and a tidally induced shear (originally discussed in the context of a single lensing star in an extended gravitational lens galaxy; Chang & Refsdal 1979, 1984). In binary microlensing, similar to our case, it referred initially to the companion providing this tidal shear. Subsequently, Dominik (1999), Bozza (2000) and An (2005) showed that there is a deep mathematical symmetry between such tidal shears (from widely separated companions) and quadrupole distortions induced by very close companions. Since in most cases these cannot be distinguished, they are jointly referred to as “Chang–Refsdal” in the context of binary microlensing.

<sup>58</sup> The mass function of lenses toward the Galactic Bulge, as modeled by Dominik (2006), is a narrow distribution, with the most probable lens mass of  $\sim 0.3 M_\odot$ .

**Table 1**  
Best-fit Microlensing Model Parameters and Their 68% Uncertainty Range Derived from the MCMC Chain Density for the Eight Degenerate Solutions

Parameter	Close				Wide			
	--	+–	--+	++	--	+–	--+	++
$t_0$ [HJD $''$ ]	$1.30439^{+0.00050}_{-0.00060}$	$1.30413^{+0.00046}_{-0.00047}$	$1.30440^{+0.00060}_{-0.00049}$	$1.30422^{+0.00037}_{-0.00053}$	$1.30472^{+0.00055}_{-0.00041}$	$1.30458^{+0.00045}_{-0.00042}$	$1.30480^{+0.00044}_{-0.00034}$	$1.30476^{+0.00042}_{-0.00041}$
$u_0$	$-0.00161^{+0.00018}_{-0.00016}$	$0.00152^{+0.00012}_{-0.00013}$	$-0.00151^{+0.00012}_{-0.00011}$	$0.00162^{+0.00009}_{-0.00008}$	$-0.00154^{+0.00010}_{-0.00008}$	$0.00146^{+0.00009}_{-0.00013}$	$-0.00155^{+0.00007}_{-0.00008}$	$0.00157^{+0.00008}_{-0.00011}$
$t_E$ [d]	$95.0^{+11.6}_{-8.4}$	$100.6^{+9.1}_{-7.0}$	$101.0^{+8.6}_{-6.9}$	$94.8^{+4.8}_{-5.2}$	$99.6^{+7.0}_{-4.9}$	$104.5^{+10.0}_{-6.4}$	$98.8^{+4.7}_{-4.8}$	$97.5^{+7.5}_{-4.7}$
$\rho$ [ $10^{-4}$ ]	$6.20^{+0.88}_{-0.82}$	$5.83^{+0.70}_{-0.64}$	$5.55^{+0.68}_{-0.63}$	$6.45^{+0.58}_{-0.57}$	$5.79^{+0.55}_{-0.59}$	$5.41^{+0.53}_{-0.55}$	$5.79^{+0.49}_{-0.55}$	$6.04^{+0.57}_{-0.60}$
$\pi_{E,N}$	$-0.0607^{+0.0064}_{-0.0059}$	$-0.0595^{+0.0047}_{-0.0047}$	$0.0487^{+0.0039}_{-0.0039}$	$0.0499^{+0.0031}_{-0.0030}$	$-0.0580^{+0.0040}_{-0.0035}$	$-0.0573^{+0.0049}_{-0.0041}$	$0.0500^{+0.0030}_{-0.0025}$	$0.0482^{+0.0030}_{-0.0035}$
$\pi_{E,E}$	$-0.1160^{+0.0126}_{-0.0111}$	$-0.1096^{+0.0090}_{-0.0082}$	$-0.1110^{+0.0086}_{-0.0083}$	$-0.1182^{+0.0058}_{-0.0068}$	$-0.1106^{+0.0072}_{-0.0058}$	$-0.1052^{+0.0091}_{-0.0070}$	$-0.1136^{+0.0054}_{-0.0057}$	$-0.1149^{+0.0082}_{-0.0059}$
$\alpha$ [rad]	$0.9156^{+0.0048}_{-0.0040}$	$5.3656^{+0.0028}_{-0.0030}$	$0.9127^{+0.0041}_{-0.0041}$	$5.3637^{+0.0044}_{-0.0038}$	$0.9121^{+0.0023}_{-0.0025}$	$5.3689^{+0.0023}_{-0.0021}$	$0.9113^{+0.0022}_{-0.0022}$	$5.3689^{+0.0023}_{-0.0023}$
$s$	$0.0801^{+0.0057}_{-0.0054}$	$0.0811^{+0.0033}_{-0.0023}$	$0.0748^{+0.0063}_{-0.0031}$	$0.0848^{+0.0030}_{-0.0060}$	$14.5470^{+0.0209}_{-0.0175}$	$14.1238^{+0.0260}_{-0.0147}$	$14.5959^{+0.0090}_{-0.0095}$	$14.1049^{+0.0240}_{-0.0263}$
$q$	$0.0729^{+0.0022}_{-0.0028}$	$0.0660^{+0.0042}_{-0.0033}$	$0.0770^{+0.0127}_{-0.0121}$	$0.0656^{+0.0117}_{-0.0059}$	$0.0933^{+0.0057}_{-0.0071}$	$0.0831^{+0.0063}_{-0.0080}$	$0.0950^{+0.0057}_{-0.0050}$	$0.0898^{+0.0049}_{-0.0070}$
$f_s/f_b$	$0.104^{+0.011}_{-0.012}$	$0.097^{+0.008}_{-0.009}$	$0.097^{+0.008}_{-0.008}$	$0.104^{+0.007}_{-0.005}$	$0.103^{+0.006}_{-0.008}$	$0.098^{+0.007}_{-0.010}$	$0.104^{+0.006}_{-0.005}$	$0.106^{+0.006}_{-0.009}$
$\chi^2$	2812	2818	2812	2816	2812	2818	2811	2816

Note. HJD $''$  = HJD-2457200.



### 3.3. Close/Wide Degeneracy

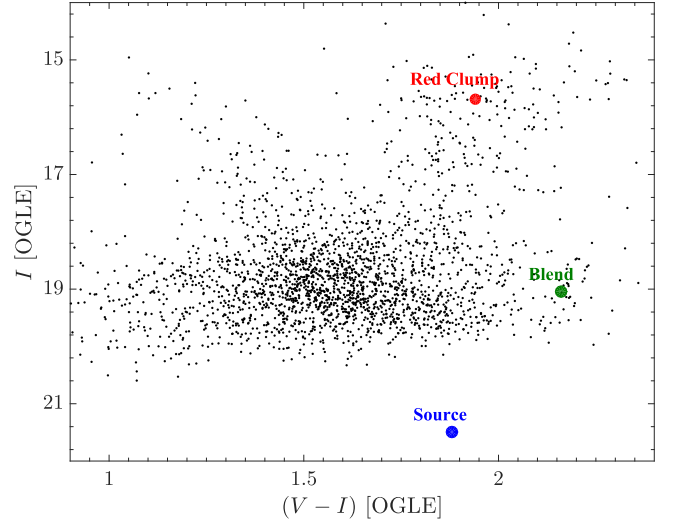
A binary lensing system with projected separation significantly different from the angular Einstein radius can be approximated as a circularly symmetric system with a weak perturbation potential. An (2005) studied this symmetry and its implications for binary-lens microlensing light curves and found an analytic form to convert between a set of  $(s_{\text{close}}, q_{\text{close}})$  to their degenerate pair  $(s_{\text{wide}}, q_{\text{wide}})$ . The degeneracy is more severe when  $s \ll 1$  or  $s \gg 1$ , i.e., far from the resonant caustic topology. The projected separation of OGLE-2015-BLG-1319 is  $s \simeq 0.08$  (or  $s \simeq 14$ ), which is securely in the highly degenerate regime.

A possible way to distinguish between the two degenerate solutions is by detecting the projected orbital motion of the companion. This requires two additional parameters representing the evolution of the companion’s position (angle and separation) during the event,  $d\alpha/dt$  and  $ds/dt$ . For a single observer these are commonly degenerate with the microlens parallax, since both can have similar signatures on the light curve. However, when considering two or more observers, as in our case, the microlens parallax information comes from a completely different and independent measurement, and thus they can easily be disentangled. The models of the wide and close configurations, when including orbital motion, will usually still be degenerate (or very close to it), thus neither can be favored by goodness-of-fit tests. However, they can be distinguished by energy considerations. Each solution implies a certain ratio of the projected kinetic to potential energy (Dong et al. 2009),

$$\beta = \left( \frac{\text{KE}}{\text{PE}} \right)_{\perp} = \frac{v_{\perp}^2 r_{\perp}}{2GM} = \frac{\kappa M_{\odot} \text{yr}^2}{8\pi^2} \frac{\pi_E s^3 \gamma^2}{\theta_E (\pi_E + \pi_S/\theta_E)^3}, \quad (4)$$

where  $\gamma^2 = (ds/dt/s)^2 + (d\alpha/dt)^2$ . The typical ratio is  $\beta \sim \mathcal{O}(0.4)$ . The main observables that are different between the wide and close models, in the limit of low  $q$ , are  $(s, ds/dt, d\alpha/dt)$  ( $\theta_E$  will also be different by  $\sim \sqrt{1+q}$ ). Since the rate of position change should be very similar, giving approximately the same  $\gamma^2$ , the dominant difference will be due to  $s$ . The strong dependence on the projected separation and the  $s \leftrightarrow s^{-1}$  nature of the wide/close degeneracy suggest  $\beta_{\text{wide}}/\beta_{\text{close}} \simeq s^6$ . Thus, if the close solution has a typical value, the wide solution will give  $\beta \gg 1$ , an unphysical solution. Conversely, if the wide solution has a typical energy ratio, then the close solution will have  $\beta \ll 1$ , which has a negligible probability (the probability distribution follows  $\beta^2$ ).

We include the possibility of orbital motion in the eight solutions for OGLE-2015-BLG-1319. For the wide solutions the fit is improved by  $\Delta\chi^2 = 17$  and for the close solutions it is improved by  $\Delta\chi^2 = 6$ . The projected energy ratio for the wide solutions is  $\beta_{\text{wide}} = 3.6 \times 10^5$  and for the close solutions it is  $\beta_{\text{close}} = 0.7$ . Thus, while the wide configuration gives a better fit, it is ruled out by physics and therefore shows that systematic errors are possible at the  $\Delta\chi^2 = 11$  level. Hence, the improvement for the close solution is not believable. Even if we ignore systematics, the  $\Delta\chi^2 = 6$  improvement is too weak to reliably claim a detection. We conclude that orbital motion cannot be reliably detected, so the wide/close degeneracy remains.



**Figure 4.** OGLE instrumental CMD of stars within  $90''$  of the event’s position. The offset between the red clump centroid (red) and the source star (blue) allow us to derive the source angular radius  $\theta_*$ . The total “blend light” (green), which is composed of the light from the lens and additional unrelated stars in the OGLE PSF, is also marked. From the derived mass and distance of the lens star we find that the lens is not the dominant object of the blend.

## 4. PHYSICAL PROPERTIES

The mass and distance of the lensing system can be derived from the microlens parallax and the angular Einstein radius,

$$M = \frac{\theta_E}{\kappa\pi_E}; \quad \pi_{\text{rel}} = \pi_E \theta_E. \quad (5)$$

These allow us to translate the mass ratio and the scaled projected separation between the two companions to absolute physical values. While  $\pi_E$  is a direct observable, the angular Einstein radius  $\theta_E$  is derived from the scaled finite source size (found from the light curve model) and the angular size of the source (found using the CMD) by  $\theta_E = \theta_*/\rho$ .

### 4.1. Color–Magnitude Diagram

The source properties can be derived from its position on a CMD. We construct a CMD of objects within  $90''$  of the event’s position (Figure 4), using OGLE instrumental  $V$ -band and  $I$ -band magnitudes. We estimate the centroid of the “red giant clump” (RGC) to be at  $(V - I, I)_{\text{cl,ogle}} = (1.94, 15.68)$  and compare it to the intrinsic centroid of  $(V - I, I)_{\text{cl,0}} = (1.06, 14.51)$  derived by Bensby et al. (2013) and Nataf et al. (2013) for the galactic coordinates of the event,  $(l, b) = (-1.7, -4.0)$ . The source baseline OGLE  $I$ -band magnitude as inferred from the microlensing model is  $I_{s,\text{ogle}} = 21.50 \pm 0.06$ , and assuming it is behind the same dust column as the red clump, its intrinsic magnitude is  $I_{s,0} = 20.33 \pm 0.06$ . This is one of the faintest sources ever reported in microlensing.

It is important to determine the source  $(V - I)_s$  color for two reasons. First, this quantity enters into the measurement of the angular source size  $\theta_*$ . Second, it is needed to estimate the  $I - L_{\text{Spitzer}}$  source color, via a  $VIL$  color–color diagram derived from nearby field stars.

A standard way to determine the instrumental  $(V - I)_s$  color is from regression of  $V$  versus  $I$  flux as the source magnification changes. We apply this technique to OGLE data and find

**Table 2**  
Physical Properties of the Binary System for the Eight Degenerate Solutions

Parameter	Close				Wide			
	--	+-	-+	++	--	+-	-+	++
$M_1 [M_\odot]$	$0.54^{+0.15}_{-0.10}$	$0.61^{+0.12}_{-0.10}$	$0.65^{+0.13}_{-0.10}$	$0.53^{+0.08}_{-0.06}$	$0.59^{+0.10}_{-0.07}$	$0.67^{+0.13}_{-0.09}$	$0.60^{+0.08}_{-0.07}$	$0.57^{+0.10}_{-0.07}$
$M_2 [M_J]$	$40.79^{+12.73}_{-8.70}$	$42.07^{+6.99}_{-6.17}$	$53.16^{+8.78}_{-11.57}$	$36.78^{+6.70}_{-4.82}$	$57.76^{+5.77}_{-4.46}$	$57.74^{+5.87}_{-4.67}$	$59.14^{+5.41}_{-4.08}$	$53.53^{+5.31}_{-4.19}$
$r_\perp$ [au]	$0.24^{+0.02}_{-0.01}$	$0.26^{+0.02}_{-0.02}$	$0.25^{+0.02}_{-0.02}$	$0.25^{+0.02}_{-0.02}$	$46.26^{+3.83}_{-3.18}$	$47.47^{+4.29}_{-3.37}$	$46.47^{+3.31}_{-2.78}$	$43.72^{+3.73}_{-2.99}$
$D_L$ [kpc]	$4.89^{+0.14}_{-0.17}$	$4.86^{+0.14}_{-0.16}$	$4.83^{+0.16}_{-0.20}$	$4.99^{+0.13}_{-0.16}$	$4.85^{+0.13}_{-0.18}$	$4.80^{+0.15}_{-0.19}$	$4.84^{+0.13}_{-0.18}$	$4.93^{+0.13}_{-0.16}$
$\theta_E$ [mas]	$0.61^{+0.09}_{-0.08}$	$0.65^{+0.08}_{-0.07}$	$0.68^{+0.09}_{-0.07}$	$0.59^{+0.06}_{-0.05}$	$0.66^{+0.07}_{-0.06}$	$0.70^{+0.08}_{-0.06}$	$0.66^{+0.07}_{-0.05}$	$0.63^{+0.07}_{-0.05}$
$\mu_{\text{hel}}(N, E)$ [mas yr $^{-1}$ ]	(-1.1, -1.6)	(-1.1, -1.6)	(1.0, -1.7)	(0.9, -1.6)	(-1.1, -1.6)	(-1.2, -1.6)	(1.0, -1.7)	(0.9, -1.7)
$\mu_{\text{LSR}}(l, b)$ [mas yr $^{-1}$ ]	(-1.8, 0.6)	(-1.9, 0.6)	(-0.1, 1.8)	(-0.1, 1.7)	(-1.9, 0.6)	(-1.9, 0.6)	(-0.1, 1.8)	(-0.1, 1.7)

$(V - I)_{s,\text{ogle}} = 1.87 \pm 0.07$ , from which we derive  $(V - I)_{s,0} = 1.00 \pm 0.07$  by correcting to the clump offset found above. Note that we must also account for the fact that the OGLE instrumental  $(V - I)$  is a factor of 1.09 larger than standard. This measurement suffers from two separate potential problems. First, the error is relatively large. Second, almost all the information in the regression comes from a single, significantly magnified  $V$  point and thus could be subject to systematic errors. Therefore, we also measure  $(V - I)_{s,0}$  using a second method. We apply regression to determine the instrumental  $(I - H)_{s,\text{ctio}} = 0.67 \pm 0.01$  from  $I$  and  $H$  data taken simultaneously at SMARTS CTIO. We then used a  $VIH$  color-color relation derived from all stars in our field to infer an instrumental  $(V - I)_{s,\text{ctio}} = 1.64 \pm 0.03$ . Then, comparing to the instrumental clump  $(V - I)_{\text{cl,ctio}} = 1.69$ , we derive  $(V - I)_{s,0} = 1.01 \pm 0.03$ .

Combining the two measurements yields  $(V - I)_{s,0} = 1.01 \pm 0.03$ . Using standard color-color relations (Bessell & Brett 1988) and the relation between angular source size and surface brightness, derived by (Kervella et al. 2004), we find  $\theta_* = 0.38 \pm 0.02 \mu\text{as}$ .

Before applying the  $VIL$  color-color relation (using OGLE- $IV$  and  $Spitzer - L$ ) to derive the  $(I - L)_s$  color we convert the  $(V - I)_{s,0}$  color back to the OGLE system, i.e.,  $(V - I)_{s,\text{ogle}} = 1.88 \pm 0.03$ . We then use red giant branch stars ( $I_{\text{ogle}} < 18$ ;  $1.7 < (V - I)_{\text{ogle}} < 2.3$ ), which are a good representation of the bulge star population, to derive the color-color relation and find the source instrumental color,  $(I_{\text{ogle}} - L_{\text{Spitzer}})_s = 1.54 \pm 0.07$ . As a check, we also fit with a larger set including most stars ( $I_{\text{ogle}} < 20$ ;  $1 < (V - I)_{\text{ogle}} < 3$ ) and find a compatible color  $1.51 \pm 0.02$ .

Any light from the lensing system is superposed on the microlensing event and is a part of the blending flux. Therefore, the blend flux sets an upper limit on the lens flux, giving an additional constraint to the physical properties of the lensing system. The high blending fraction in OGLE-2015-BLG-1319 suggests that the lens star might dominate the blended flux. If so, it can have an additional application. For example, one can measure the radial velocity of the lens star (Boisse et al. 2015; Yee et al. 2016), which can be a complementary way to break the wide/close degeneracy. Subtracting the source color and magnitude from the total baseline fluxes gives  $(V - I, I)_{\text{blend,ogle}} = (2.16, 19.04)$ . If we assume that the blend is behind all the dust, which for the direction of the event means it is at  $\gtrsim 3$  kpc (Green et al. 2015), we find  $(V - I, I)_{\text{blend,0}} = (1.26, 17.87)$ . We next derive the physical properties of the lensing system and show that the lens cannot be the dominant source of the blend light.

#### 4.2. Another Brown Dwarf in the Desert?

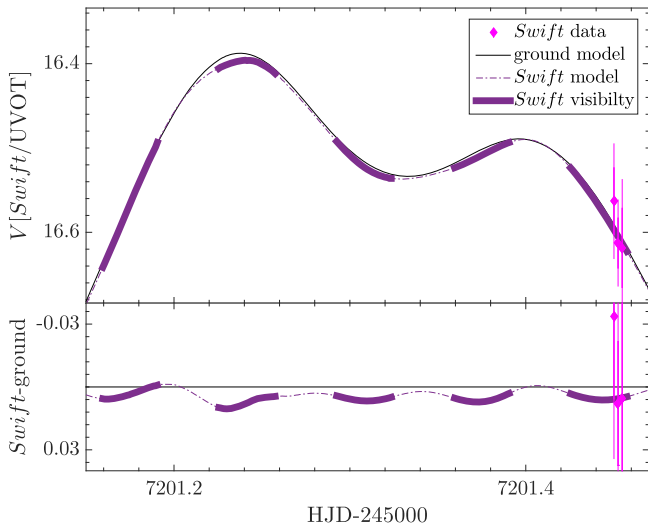
Table 2 summarizes the physical properties derived for each of the eight degenerate solutions. The results span a relatively narrow range for each of the properties, but one that is still wider than the uncertainties of each of the solutions, therefore we discuss the full  $1\sigma$  range of all results.

The angular Einstein radius we find is  $\theta_E = 0.54\text{--}0.78$  mas. The relative proper motion between the source and the lens is  $\mu_{\text{hel}} = 1.8\text{--}2$  mas/year. This is smaller than what is typical for disk lenses, and moreover the direction is also peculiar. Converting the relative proper motion to the Local Standard of Rest (LSR), we find two solutions (corresponding to  $\pm\pi_{E,N}$ ),  $\mu_{\text{LSR}}(l, b) = (-1.9, 0.6)$  mas yr $^{-1}$  or  $\mu_{\text{LSR}}(l, b) = (-0.1, 1.8)$  mas yr $^{-1}$ . Since the typical value is  $\mu_{\text{LSR}}(l, b) = (6.5, 0.0) \pm (2.9, 2.8)$  mas yr $^{-1}$ , the probabilities for the solutions are only 2% and 6%, respectively. Current microlensing surveys detect over 2000 events per year, therefore one expects over 40 and 120 events, respectively, with these properties each season. Thus, while we find low probabilities, they will become statistically significant only if more events yield similar configurations.

The host lens is a  $0.44\text{--}0.8 M_\odot$  star and the system is at a distance of 4.6–5.1 kpc. These suggest a K dwarf host fainter than  $I_{L,0} > 18.4$ . Therefore, the lens star is not the dominant source of blend light. The companion is a 30–65  $M_J$  BD, with two possible solutions for the projected separation due to the wide/close degeneracy, of either 0.23–0.28 au or 40–52 au. The close solution suggests that the BD is inside the “brown-dwarf desert” (e.g., Grether & Lineweaver 2006). We discuss this possibility below in Section 6.

#### 5. SWIFT FEASIBILITY OF MICROLENS PARALLAX MEASUREMENTS

The microlens parallax sensitivity of a satellite depends on its projected separation from Earth, the photometric precision, and the underlying event microlens parameters, mainly  $u_0$ ,  $t_E$ , and  $\pi_E$ . In the case of a low-Earth-orbit satellite such as *Swift* ( $\sim 600$  km from the surface of the Earth), the separation might be too small to detect the parallax signal in a typical event (Honma 1999; Gould 2013). Recently, Mogavero & Beaulieu (2016) showed that a low-Earth-orbit satellite can be used to discover free-floating planets down to the mass of the Earth, i.e., with short timescales of  $t_E < 1$  days, for impact parameters of  $u_0 < 0.1$  (i.e.,  $A_{\text{max}} > 10$ ). They assumed a continuous 3 minute cadence with a  $\sigma_m = 0.01$  mag photometric precision at baseline, while *Swift* has only  $\sigma_m = 0.1$  mag precision at  $V \simeq 17.3$  mag (for 3 minute exposures), which corresponds to RGC bulge stars. Most microlensing sources are 3–4 mag

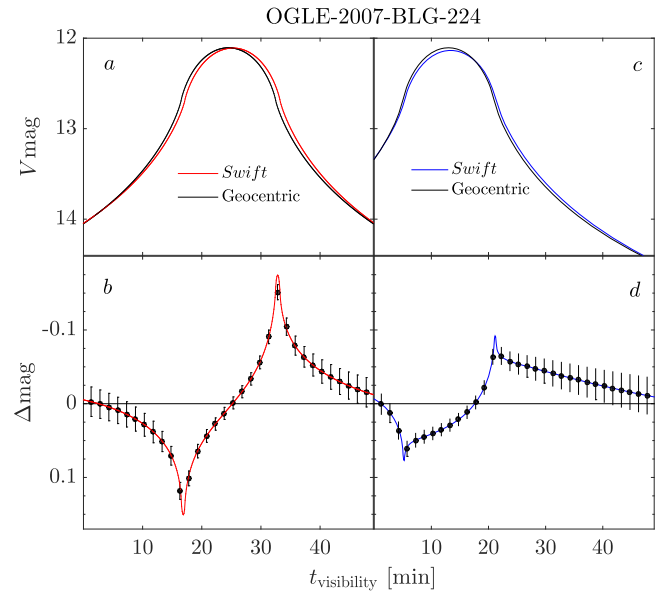


**Figure 5.** The light curve model of OGLE-2015-BLG-1319 as seen from *Swift* (dashed–dotted purple line) and from the ground (black line). The thick lines show the 50 minute windows during which the event was visible from *Swift*, and the magenta diamonds are the three measurements during the first epoch. The wave-like structure between the models due to the varying projected separation of *Swift* allows, in principle, for the detection of the microlens parallax. However, the maximal difference in the case of OGLE-2015-BLG-1319 was only 0.006 mag (at the first bump). Even if the event was observed at that time, the *Swift* precision was not sufficient to constrain the microlens parallax  $\pi_E$ .

fainter at baseline. Even for RGC sources, the magnification needs to be  $>100$  times higher (i.e.,  $u_0 < 10^{-3}$ ) in order to compensate for the photometric precision (though for such giant sources the finite source size starts to limit the maximal magnification for such impact parameters).

In the case of OGLE-2015-BLG-1319, the microlens parallax could not be detected with *Swift* data. However, it can be used as a first test case for such measurements. In particular, the microlens parallax was measured by *Spitzer*, so we know what the *Swift* light curve should look like. Although it was a high magnification event with  $A_{\max} \sim 725$ , it was also heavily blended and with a long timescale of  $\sim 100$  days. The projected Einstein radius  $\tilde{r}_E = au/\pi_E$  was 7.7 au, several orders of magnitudes larger than *Swift*'s distance from Earth. The event was bright enough ( $V < 16.5$ ) to obtain sufficient photometric precision for only 10 hours, and it was observed for only 10 minutes during that time, with 3 consecutive observations. The field was visible from the satellite for  $\sim 50$  minutes every orbit of 96 minutes. Figure 5 shows the model of the event as seen from Earth and from *Swift*. It includes *Swift* measurements and highlights, in thick lines, the regions where the field was visible from the satellite. It is clear that *Swift* could not detect the parallax signal. The wave-like feature between the two light curves, mainly seen around the first bump, is due to the varying projected separation of *Swift*. Identifying this feature in future events can be important, allowing for the detection of microlens parallax from relatively short portions of the light curve, when the precision is sufficiently high.

A study of *Swift* feasibility for measuring the microlens parallax, extending the work by Mogavero & Beaulieu (2016), requires taking into account the *Swift* specifications (photometric precision, bulge visibility from its orbit) as well as more extreme parallax cases. Mogavero & Beaulieu (2016) assumed



**Figure 6.** Extreme microlensing event OGLE-2007-BLG-224, for which the lens star was a nearby ( $\sim 500$  pc) single BD, as hypothetically seen by a geocentric observer and from *Swift*. Panel *a* shows the peak as seen during the 50 minute *Swift* visibility window if it were centered around the geocentric  $t_0$ , while in panel *c* the geocentric  $t_0$  is 13 minutes earlier. Panels *b* and *d* show the magnitude difference between the *Swift* and geocentric light curves for these two possibilities, respectively. The difference is clearly larger in panel *b*, which shows that the *Swift* feasibility of measuring the microlens parallax is very sensitive to the exact time of the peak during the visibility window. The black circles are hypothetical 90 s exposure data points with the expected *Swift* precision as their errors. In both cases the microlens parallax is detected, with  $\chi^2 = 931$  for panel *b* and  $\chi^2 = 670$  for panel *d*. Since the variations are on timescales of minutes, especially near the maximal differences, the signal is marginalized over the exposure time. This can be seen by the data point at the peak of panel *b*. For 180 s exposures, while the photometric precision is better, the overall  $\chi^2$  is smaller by 30.

a single (typical) value for  $\pi_{\text{rel}}$  and  $\mu$ . Under these assumptions, a given  $t_E$  sets the mass of the lens and the magnitude of  $\pi_E$ . For more extreme values of  $\pi_{\text{rel}}$  and lens mass one can get much larger  $\pi_E$ , to which *Swift* might be sensitive. In addition, Mogavero & Beaulieu (2016) concluded that visibility gaps in the light curves will not significantly alter the parallax sensitivity, while for high magnification events the effective time is of order of minutes thus it is very sensitive to the  $\sim 45$  minutes visibility gaps.

To show *Swift*'s potential for measuring microlens parallaxes we use the extreme microlensing event OGLE-2007-BLG-224 (Gould et al. 2009) for which terrestrial parallax was measured. The lens star was a  $58 \pm 4 M_J$  BD at a distance of  $525 \pm 40$  pc implying a large microlens parallax of  $\pi_E = 1.97 \pm 0.13$ . The source baseline magnitude was  $V_S = 20.58$  and the event reached a high magnification of  $A = 2452$  (i.e.,  $V_{\text{peak}} = 12.11$  mag). Figure 6 shows the peak of the event as it would have hypothetically been seen by a geocentric observer and from *Swift* during its 50 minute visibility window. The left panels show the two light curves and their difference if the geocentric  $t_0$  was at the middle of the *Swift* visibility window and the right panels for a geocentric  $t_0$  13 minutes earlier. The difference is clear in both possibilities but significantly larger if the visibility window happened to be centered on the geocentric  $t_0$ , with a maximal difference of  $\Delta\text{mag} = 0.17$  (only  $\Delta\text{mag} = 0.09$  for

the offset case), showing the large sensitivity to the exact time of the peak during the visibility window.

We sample the *Swift* light curve with a 90 s cadence and use the UVOT signal-to-noise tool<sup>59</sup> to estimate the photometric precision for each point. The crowded fields of the bulge could potentially result in larger errors. However, we calculated the  $V$  magnitude rms of all stars in our six 200 s *Swift* images of OGLE-2015-BLG-1319 and found that the rms distribution agrees well with the UVOT tool estimates for 200 s exposures. (We note that for the bright  $V$  magnitudes OGLE-2007-BLG-224 reached, the coincidence loss correction needs to be taken into account). We then calculate the  $\chi^2$  between the 32 *Swift* points and the geocentric light curve and find  $\chi^2 = 931$  for the centered observations and  $\chi^2 = 670$  for the offset ones, thus easily detected in both cases. Observations on the adjacent visibility windows would not improve the detection since the photometric precision is  $>20$  larger than the parallax signal at those regions. The differences between the two light curves vary around the maximal differences with timescales of minutes, and therefore the parallax signal is also sensitive to the exposure time (see for example the data point at the maximal difference on panel  $b$  of Figure 6). To check this we also sampled the light curve with 180 s exposures and found that the  $\chi^2$  was smaller by 30.

The *Swift* feasibility can also extend to nearby free-floating planets. The microlens parallax magnitude will be larger than that of BDs but the peak magnification will be lower, limited by the finite source effects. The duration of the signal over the peak will be similar since it is dominated by the source crossing time  $t_* = \theta_*/\mu$ . Finally, we note that *Swift* might be able to detect the parallax signal during caustic crossings (in particular the caustic exits) of bright binary events (analogous to the original idea presented by Honma 1999), which are much more common, and with real-time light curve modeling it can be predicted in advance to trigger *Swift*. A thorough study of *Swift* microlens parallax sensitivity will be conducted in R.A. Street et al. 2016, (in preparation).

## 6. DISCUSSION

We have presented the detection, via simultaneous observations from the ground, *Spitzer*, and *Swift*, of a BD orbiting a K dwarf with two degenerate solutions for the projected separation. This BD adds to other microlensing-detected BDs in a variety of physical configurations. Han et al. (2016) summarizes the 15 published microlensing events with BDs prior to OGLE-2015-BLG-1319. This list includes 1 BD hosting a planet, 10 BDs around main sequence stars (9 around M dwarfs and 1 around G-K dwarf), 2 binary BD systems, and 2 isolated BDs. These were discovered through different surveys with different detection efficiencies, making it difficult to derive a statistical conclusion from them (however, see Ranc et al. 2015). In addition, more than half of the published BDs with companions were discovered due to central caustic anomalies. Therefore, the majority of these suffer from the wide/close degeneracy, which leads to a degeneracy in their derived projected separation. Nevertheless, the 11 binary microlensing events with a BD around a main sequence star hint (and need to be confirmed with a much larger sample) that such systems might not be rare at separations of 0.5–20 au,

where microlensing is sensitive (this range is larger than for exoplanets due to higher detection sensitivity). This is in contrast to estimates through other techniques, such as radial velocity and transit, which find that BDs are rare ( $<1\%$ , Grether & Lineweaver 2006) at closer separations. A possible explanation for this difference besides the different separations, as suggested by Shvartzvald et al. (2016), is that different host stars are mostly probed by each technique—FGK stars by radial velocity and transits versus M stars by microlensing.

The event was part of the 2015 *Spitzer* campaign and was the first to be observed simultaneously from two space telescopes. *Kepler* follows the path started by *Spitzer* and is now conducting, as Campaign 9 of its  $K2$  mission ( $K2C9$ ), the first space microlensing survey (Gould & Horne 2013; Henderson et al. 2015). The  $K2C9$  fields are monitored continuously from the ground, both to increase the planet sensitivity and to enable the measurement of the microlens parallax of all events in those fields. In addition to detecting bound companions (planets, binaries, stellar remnants), this will be the first opportunity to measure the masses of free-floating planets, which are identified by their short timescales, of order of one day. Such events cannot be observed from *Spitzer*, which requires target uploads at least three days before observations. Triple-location observations, such as those conducted for OGLE-2015-BLG-1319, are planned with *Spitzer* and *Kepler*, monitoring events in the  $K2C9$  fields during the last 10 days of the *Kepler* campaign, when both satellites can observe the bulge (see discussion in Calchi Novati & Scarpetta 2016).

For the first time, *Swift* was used to observe a microlensing event and was able to detect the event while it was magnified. The unique ToO override capability of the *Swift* spacecraft is, by design, ideal for the observation of transient variables of all kinds and in particular for microlensing. However, the microlens parallax could not be measured with *Swift* data for this event. From our preliminary study of *Swift*'s ability to detect the microlens parallax signal we find that it is sensitive to nearby BDs and free-floating planets in high magnification events ( $A > 1000$ ). If the lens in our example of OGLE-2007-BLG-224 was a free-floating super-Jupiter rather than a BD, with all other characteristics of the event identical, *Swift* could have significantly detected ( $\chi^2 = 430$ ) the microlens parallax signal with continuous 90 s exposures over a 50 minute visibility window centered on the peak of the event. Such nearby ( $\sim 500$  pc) massive free-floating planets could be directly imaged with the *James Webb Space Telescope* (for ages  $\lesssim 1$  Gyr), and would possibly allow study of their formation mechanisms and environments.

We thank T. Meshkat and R. Patel for fruitful discussions about directly imaging free-floating planets. Work by Y.S. and C.B.H. was supported by an appointment to the NASA Postdoctoral Program at the Jet Propulsion Laboratory, administered by Universities Space Research Association through a contract with NASA. This work makes use of observations from the LCOGT network, which includes three SUPAscopes owned by the University of St Andrews. The RoboNet programme is an LCOGT Key Project using time allocations from the University of St Andrews, LCOGT and the University of Heidelberg together with time on the Liverpool Telescope through the Science and Technology Facilities Council (STFC), UK. This research has made use of the LCOGT Archive, which is operated by the California Institute

<sup>59</sup> [http://www.mssl.ucl.ac.uk/www\\_astro/uvot/uvot\\_observing/uvot\\_tool.html](http://www.mssl.ucl.ac.uk/www_astro/uvot/uvot_observing/uvot_tool.html)

of Technology, under contract with the Las Cumbres Observatory. The OGLE project has received funding from the National Science Centre, Poland, grant MAESTRO 2014/14/A/ST9/00121 to A.U.. The OGLE team thanks Profs. M. Kubiak and G. Pietrzyński, former members of the OGLE team, for their contribution to the collection of the OGLE photometric data over the past years. T.S. acknowledges the financial support from the JSPS, JSPS23103002, JSPS24253004, and JSPS26247023. The MOA project is supported by the grant JSPS25103508 and 23340064. Work by A.G. and S.C. was supported by JPL grant 1500811. Work by A.G. and W.Z. was supported by NSF grant AST-1516842. Work by J.C.Y. was performed under contract with the California Institute of Technology (Caltech)/Jet Propulsion Laboratory (JPL) funded by NASA through the Sagan Fellowship Program executed by the NASA Exoplanet Science Institute. This work is based in part on observations made with the *Spitzer* Space Telescope, which is operated by the Jet Propulsion Laboratory, California Institute of Technology under a contract with NASA. The *Spitzer* Team thanks Christopher S. Kochanek for graciously trading us his allocated observing time on the CTIO 1.3 m during the *Spitzer* campaign. We thank the *Swift* operations team for approving and implementing the ToO request. This publication was made possible by NPRP grant # X-019-1-006 from the Qatar National Research Fund (a member of Qatar Foundation). Work by S.M. has been supported by the Strategic Priority Research Program “The Emergence of Cosmological Structures” of the Chinese Academy of Sciences Grant No. XDB09000000, and by the National Natural Science Foundation of China (NSFC) under grant numbers 11333003 and 11390372. M.P.G.H. acknowledges support from the Villum Foundation. N.P. acknowledges funding by the Portuguese FCT—Foundation for Science and Technology and the European Social Fund (ref: SFRH/BGCT/113686/2015) and the Gemini-Conicyt Fund, allocated to project #32120036. CITEUC is funded by National Funds through the FCT—Foundation for Science and Technology (project: UID/Multi/00611/2013) and FEDER—European Regional Development Fund through COMPETE 2020 Operational Programme Competitiveness and Internationalisation (project: POCI-01-0145-FEDER-006922). G.D. acknowledges Regione Campania for support from POR-FSE Campania 2014-2020. This work is based on data collected by MiNDSTEP with the Danish 1.54 m telescope at the ESO La Silla observatory.

## REFERENCES

- An, J. H. 2005, *MNRAS*, **356**, 1409  
 Bensby, T., Yee, J. C., Feltzing, S., et al. 2013, *A&A*, **549**, A147  
 Bessell, M. S., & Brett, J. M. 1988, *PASP*, **100**, 1134  
 Boisse, I., Santerne, A., Beaulieu, J.-P., et al. 2015, *A&A*, **582**, L11  
 Bond, I. A., Abe, F., Dodd, R. J., et al. 2001, *MNRAS*, **327**, 868  
 Bozza, V. 2000, *A&A*, **355**, 423  
 Bozza, V., Shvartzvald, Y., Udalski, A., et al. 2016, *ApJ*, **820**, 79  
 Bramich, D. M., Vidrih, S., Wyrzykowski, L., et al. 2008, *MNRAS*, **386**, 887  
 Calchi Novati, S., & Scarpetta, G. 2016, *ApJ*, **824**, 109  
 Calchi Novati, S., Gould, A., Udalski, A., et al. 2015a, *ApJ*, **804**, 20  
 Calchi Novati, S., Gould, A., Yee, J. C., et al. 2015b, *ApJ*, **814**, 92  
 Chang, K., & Refsdal, S. 1979, *Natur*, **282**, 561  
 Chang, K., & Refsdal, S. 1984, *A&A*, **132**, 168  
 Claret, A. 2000, *A&A*, **363**, 1081  
 Dominik, M. 1999, *A&A*, **349**, 108  
 Dominik, M. 2006, *MNRAS*, **367**, 669  
 Dong, S., Udalski, A., Gould, A., et al. 2007, *ApJ*, **664**, 862  
 Dong, S., Gould, A., Udalski, A., et al. 2009, *ApJ*, **695**, 970  
 Gould, A. 1994, *ApJL*, **421**, L75  
 Gould, A. 2008, *ApJ*, **681**, 1593  
 Gould, A. 2013, *ApJL*, **763**, L35  
 Gould, A., & Gauchere, C. 1997, *ApJ*, **477**, 580  
 Gould, A., & Horne, K. 2013, *ApJL*, **779**, L28  
 Gould, A., & Yee, J. C. 2012, *ApJL*, **755**, L17  
 Gould, A., Udalski, A., Monard, B., et al. 2009, *ApJL*, **698**, L147  
 Green, G. M., Schlafly, E. F., Finkbeiner, D. P., et al. 2015, *ApJ*, **810**, 25  
 Grether, D., & Lineweaver, C. H. 2006, *ApJ*, **640**, 1051  
 Han, C., & Gaudi, B. S. 2008, *ApJ*, **689**, 53  
 Han, C., Jung, Y. K., Udalski, A., et al. 2016, *ApJ*, **822**, 75  
 Harpsøe, K. B. W., Jørgensen, U. G., Andersen, M. I., & Grundahl, F. 2012, *A&A*, **542**, A23  
 Henderson, C. B., Penny, M., Street, R. A., et al. 2015, *PASP*, in press  
 Honma, M. 1999, *ApJL*, **517**, L35  
 Kervella, P., Thévenin, F., Di Folco, E., & Ségransan, D. 2004, *A&A*, **426**, 297  
 Mogavero, F., & Beaulieu, J. P. 2016, *A&A*, **585**, A62  
 Muraki, Y., Han, C., Bennett, D. P., et al. 2011, *ApJ*, **741**, 22  
 Nataf, D. M., Gould, A., Fouqué, P., et al. 2013, *ApJ*, **769**, 88  
 Pejcha, O., & Heyrovský, D. 2009, *ApJ*, **690**, 1772  
 Ranc, C., Cassan, A., Albrow, M. D., et al. 2015, *A&A*, **580**, A125  
 Refsdal, S. 1966, *MNRAS*, **134**, 315  
 Schechter, P. L., Mateo, M., & Saha, A. 1993, *PASP*, **105**, 1342  
 Shvartzvald, Y., Udalski, A., Gould, A., et al. 2015, *ApJ*, **814**, 111  
 Shvartzvald, Y., Maoz, D., Udalski, A., et al. 2016, *MNRAS*, **457**, 4089  
 Skottfelt, J., Bramich, D. M., Hundertmark, M., et al. 2015, *A&A*, **574**, A54  
 Street, R. A., Udalski, A., Calchi Novati, S., et al. 2016, *ApJ*, **819**, 93  
 Sumi, T., Abe, F., Bond, I. A., et al. 2003, *ApJ*, **591**, 204  
 Udalski, A. 2003, *AcA*, **53**, 291  
 Udalski, A., Szymański, M. K., & Szymański, G. 2015a, *AcA*, **65**, 1  
 Udalski, A., Yee, J. C., Gould, A., et al. 2015b, *ApJ*, **799**, 237  
 Yee, J. C., Johnson, J. A., Skowron, J., et al. 2016, *ApJ*, **821**, 121  
 Yee, J. C., Gould, A., Beichman, C., et al. 2015, *ApJ*, **810**, 155  
 Zhu, W., Gould, A., Beichman, C., et al. 2015a, *ApJ*, **814**, 129  
 Zhu, W., Udalski, A., Gould, A., et al. 2015b, *ApJ*, **805**, 8  
 Zhu, W., Calchi Novati, S., Gould, A., et al. 2016, *ApJ*, **825**, 60