



ARCHAEOLOGICAL RESOLUTION REPORT

N9/N10 KILCULLEN TO WATERFORD SCHEME PHASE 4: KNOCKTOPHER TO POWERSTOWN

Ministerial Direction Scheme Reference No.	A032/
Registration No.	E3615
Site Name	AR075, Ennisnag 2
Townland	Ennisnag
County	Kilkenny
Excavation Director	Richard Jennings
NGR	251647 146065
Chainage	34183

ON BEHALF OF

KILKENNY COUNTY COUNCIL

IRISH ARCHAEOLOGICAL CONSULTANCY LTD

PROJECT DETAILS

Project	N9/N10 Kilcullen to Waterford Scheme, Phase 4: Knocktopher to Powerstown
Ministerial Direction Reference No.	A032/
Registration Number	E3615
Excavation Director	Richard Jennings
Senior Archaeologist	Tim Coughlan
Consultant	Irish Archaeological Consultancy Ltd, 120b Greenpark Road, Bray, Co. Wicklow
Client	Kilkenny County Council
Site Name	AR075, Ennisnag 2
Site Type	Non-Archaeological
Townland(s)	Ennisnag
Parish	Ennisnag
County	Kilkenny
NGR (easting)	251647
NGR (northing)	146065
Chainage	34183
Height OD (m)	60
Excavation Dates	9–11 August 2007
Project Duration	20 March – 12 December 2007
Report Type	Final
Report Date	December 2008
Report By	Richard Jennings

ACKNOWLEDGEMENTS

This report has been prepared in compliance with the directions issued to Kilkenny County Council by the Minister for Environment, Heritage and Local Government under Section 14A (2) of the National Monuments Acts 1930 – 2004 and the terms of the Contract between Kilkenny County Council and Irish Archaeological Consultancy Ltd.

CONSULTING ENGINEERS – N9/N10 KILKENNY CONSULT

James Eogan (NRA Senior Archaeologist), Ed Danaher (NRA Archaeologist) and Bernice Kelly (NRA Assistant Archaeologist)

Project Liaison Officer, Kilkenny Co. Council – Joe Gannon and Lisa Mulachy

NATIONAL MONUMENTS, DOEHLG

Archaeologist – Martin Reid

IRISH ANTIQUITIES DIVISION, NATIONAL MUSEUM OF IRELAND

Assistant Keeper – Nessa O'Connor

NON-TECHNICAL SUMMARY

Irish Archaeological Consultancy Ltd (IAC), funded by the National Roads Authority (NRA) through Kilkenny County Council, undertook an excavation at the site of AR075 along the proposed N9/N10 Kilcullen to Waterford Scheme, Phase 4 – Knocktopher to Powerstown (Figure 1). The following report describes the results of archaeological fieldwork at that site. The area was fully excavated by Richard Jennings under Ministerial Direction (A032/) and Registration Number E3615 issued by the DOEHLG in consultation with the National Museum of Ireland for IAC. The fieldwork took place on 9 and 14 August 2007.

Excavation of a spread recorded as a possible burnt mound in the testing report (Margaret Gowen & Co. Ltd 2006) turned out to be a modern agricultural deposit.

CONTENTS

1	INTRODUCTION	1
1.1	General	1
1.2	The Development	1
1.3	Archaeological Requirements	1
1.4	Methodology	2
2	EXCAVATION RESULTS	3
2.1	Phase 1 Natural Drift Geology	3
2.2	Phase 2 Topsoil and Plough Soil	3
3	DISCUSSION	4
4	BIBLIOGRAPHY	5
	PLATE	6
	Appendix 1 List of RMP in Area	7
	Appendix 2 List of site names and townland names	8
	List of Figures	
	Figure 1: Ennisnag 2 – general site location	
	Figure 2: Ennisnag 2 (AR075) – location of site showing RMPs	
	Figure 3: Ennisnag 2 - location of site within development	
	List of Plates	
	Plate 1: Agricultural deposit looking southwest	

1 INTRODUCTION

1.1 General

This report details the excavation of Ennisnag 2, AR075, (Figures 1–3), in the townland of Ennisnag undertaken by Richard Jennings of Kilkenny Archaeology for IAC, on behalf of Kilkenny County Council and the NRA. It was carried out as part of the archaeological mitigation programme of the N9/N10 Kilcullen to Waterford Road Scheme which has been divided into separate sections, known as Phases 1–4. Phase 4 extends from Knocktopher, Co. Kilkenny to Powerstown in Co. Carlow (Ch. 25400–76000, including the Kilkenny Link Road) and the archaeological resolution extended between Ch. 25400 and Ch. 37100. The excavation was undertaken to mitigate the impact of road construction on archaeological remains identified during a previous phase of archaeological assessment so as to ensure their preservation by record.

The site (1727 m²) was first identified during testing carried out by Margaret Gowen & Co. Ltd (Dennehy et al. 2005) and was excavated on 9 and 14 August 2007 with a team of one director and seven assistant archaeologists.

1.2 The Development

Kilkenny County Council is constructing Phase 4 of this scheme on lands between the townlands of Knocktopher, Co. Kilkenny and Powerstown Co. Carlow. A previous archaeological assessment of Phase 2 of the scheme extended into the lands acquired for Phase 4 to a point at Ch.37100.

The project is funded by the Department of Transport under the National Development Plan and the Transport 21 strategy. The total archaeological cost is administered by the National Roads Authority through Kilkenny County Council.

The roadway includes approximately 64km of mainline high quality dual carriageway, and 6.2km of the Kilkenny Link Road which will connect the road development to the planned Kilkenny Ring Road Extension. The road development requires the realignment and modification of existing national, regional and local roads where the mainline intersects them. It requires the acquisition of 305 hectares of land for its construction.

The road development runs from the tie-in to the Waterford City By-Pass at Dunkitt in south Co. Kilkenny to a junction with the existing N9 road at Powerstown, Co. Carlow. There are link roads into Kilkenny City and Paulstown, County Kilkenny. Six new grade separated junctions and three roundabouts are part of the road development.

1.3 Archaeological Requirements

The archaeological requirements for the N9/N10 Kilcullen to Waterford Road Scheme, Phase 4: Knocktopher to Powerstown, are outlined in the Archaeological Directions issued to Kilkenny County Council by the Minister for Environment, Heritage and Local Government under Section 14A (2) of the National Monuments Acts 1930 – 2004 and in the terms of the contract between Kilkenny County Council and Irish Archaeological Consultancy Ltd. These instructions form the basis of all archaeological works undertaken for this development. The archaeological excavation works under this contract are located between the townlands of Knocktopher, Co. Kilkenny, and Powerstown, Co. Carlow.

The proposed N9/N10 was subjected to an Environmental Impact Assessment, the archaeology and cultural history section of which was carried out by Valerie J. Keeley Ltd and published in February 2005 (Keeley 2005). The Record of Monuments and

Places, the Site Monument Record, Topographical files, aerial photography, the Kilkenny and Carlow County Archaeological Urban Survey, and literary sources were all consulted. Two phases of geophysical survey were also conducted by Target (post-EIS geophysics carried out by ArchaeoPhysica) and an aerial survey was carried out by Margaret Gowen Ltd (GSB 2003; Roseveare and Roseveare 2005). As a result of the paper survey, field inspections and geophysical survey, 35 sites were recorded in proximity to this section of the overall route alignment.

Advance archaeological testing was completed by Margaret Gowen and Co Ltd and excavation of the sites identified during testing was conducted by IAC on behalf of Kilkenny County Council and the NRA.

1.4 Methodology

After initial topsoil stripping the area of excavation was hand cleaned in order to identify potential archaeological remains. All such features were subsequently fully excavated and recorded by hand. The recording techniques employed were based on a recording system that best suits a rural environment. All potential archaeological features exposed were cleaned, recorded (by plan, photographs, levels, feature sheets etc.) and removed by hand excavation. The site was recorded using multi-context planning of all features exposed. An appropriate sampling strategy was then employed. Plans and sections were produced at a scale of 1:50 or 1:20 (sections were recorded generally at 1:10) and photographs where necessary. All works were carried out in agreement with the Project Archaeologist and the National Monuments Section of the DOEHLG.

It was agreed in advance that adequate funds to cover excavation, post-excavation, conservation and dating analysis would be made available by Kilkenny County Council. The site archive was kept in safe storage by IAC during the post-excavation stage.

2 EXCAVATION RESULTS

This site is located on terrain that slopes southwards towards a large stream. This stream curves and continues northwards running along the western edge of the field which delimited the area of excavation. Beyond the stream, to the south, the land rises again. To the north there are the remains of a post-medieval wall associated with Danesfort Demesne. Ennisnag 3, AR076, a multi-phased, prehistoric site, is visible beyond this wall, set in a gently rolling landscape. To the west there is a low-lying hill and the field where this site is located slopes gently down towards the foot of this hill. To the east the terrain inclines up a slope and nothing is visible beyond this.

2.1 Phase 1 Natural Drift Geology

Context	Fill of	L(m)	W(m)	D(m)	Basic Description	Interpretation
C2	N/A				Light yellowish brown sandy clay with common gravel elements. Bedrock visible in places	Subsoil

2.2 Phase 2 Topsoil and Plough Soil

Spread of animal manure and burning visible at base in ploughsoil resting on the natural subsoil

Context	Fill of	L(m)	W(m)	D(m)	Basic Description	Interpretation
C1	N/A			0.25m to 0.35m	Dark brown to black clayey silt	Topsoil and ploughsoil

3 DISCUSSION

The site at Ennisnag 2, AR075, was excavated on 9 and 14 of August 2007 by Richard Jennings as part of the N9/N10 Kilcullen to Waterford Road Scheme, Phase 4: Knocktopher to Powerstown by IAC on behalf of Kilkenny County Council and the NRA.

The deposit thought in testing to be a burnt mound was in fact a modern farming deposit visible within the topsoil. It contained many rootlets and was pungent with animal manure. The excavation area was thoroughly investigated to see if the spread disguised a burnt mound or if other archaeological features were present. None were found.

4 BIBLIOGRAPHY

Dennehy, Frazer, McQuade, Molloy, & Slater 2006 *N9/N10 Kilcullen to Waterford Scheme: Waterford to Powerstown Investigations, Contract 2: Knockmoylan to Danesfort townlands, Co. Kilkenny Archaeological Assessment Report, A032/05–08.*

GSB Prospection Ltd 2003 *Geophysical Survey Report 2003/39, N9/N10 Kilcullen to Waterford – South: Powerstown to Waterford.*

Keeley, V. J. Ltd 2005 *N9/N10 Kilcullen to Waterford Scheme: Waterford to Powerstown. Environmental Impact Statement. Chapter 17: Archaeology and Cultural Heritage, Chapter 18: Architectural Heritage.*

Roseveare, M. and Roseveare A. (ArchaeoPhysica Ltd) 2005 *N9/N10 Kilcullen to Waterford Scheme: Waterford to Powerstown Geophysical Survey Report.*

PLATE



Plate 1: Agricultural deposit looking southwest

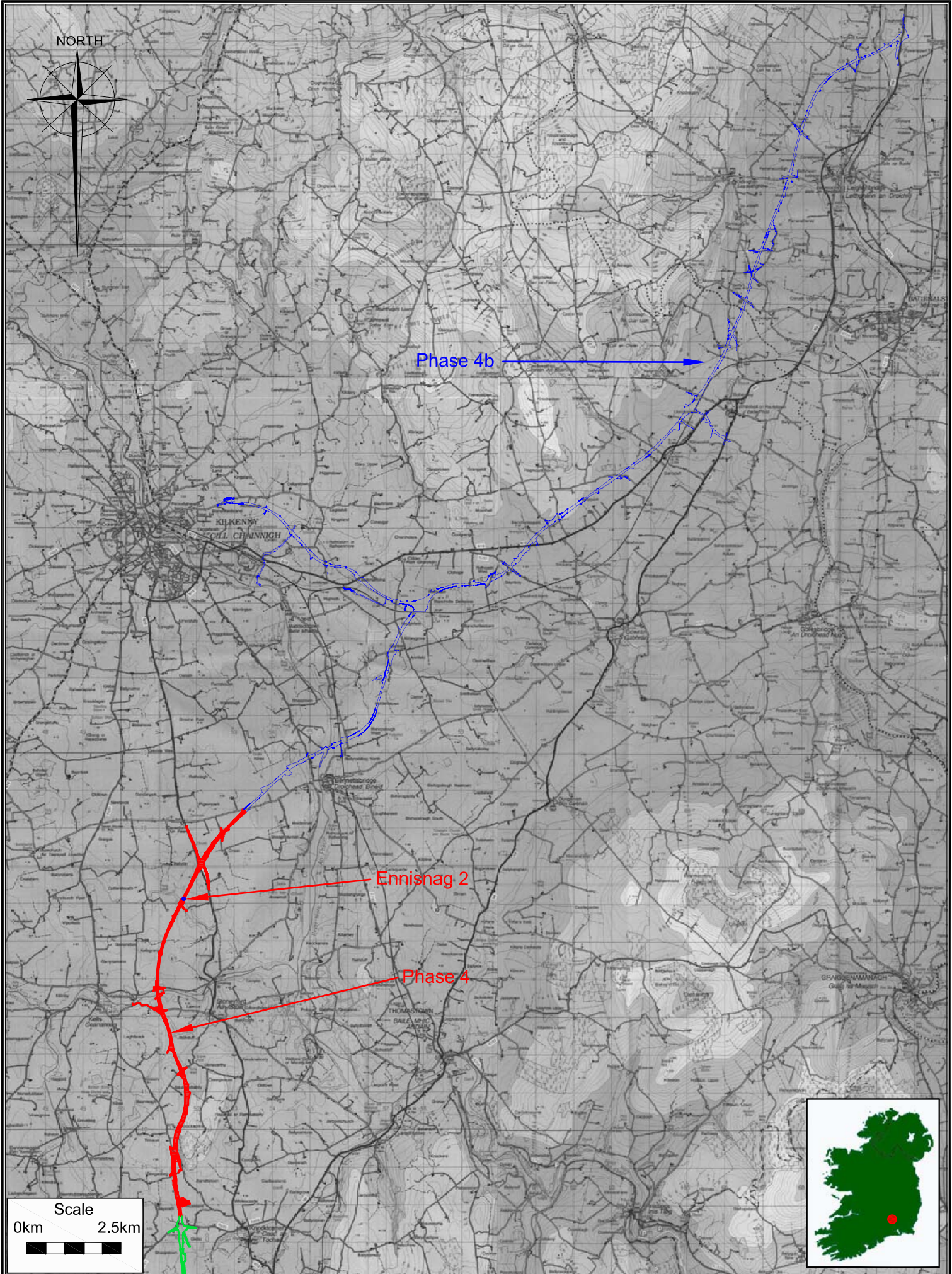
APPENDIX 1 LIST OF RMP IN AREA


RMP No	Description
KK023-080	Castle Ringwork
KK023-080001	Designed Landscape, folly
KK023-077	Ringfort, Unclassified
KK023-078	Ringfort, Unclassified
KK023-076	Ringfort, Unclassified
KK023-075	Ritual Site, Holy Well
KK023-079	Ringfort, Unclassified
KK023-005	Enclosure
KK023-004	Enclosure

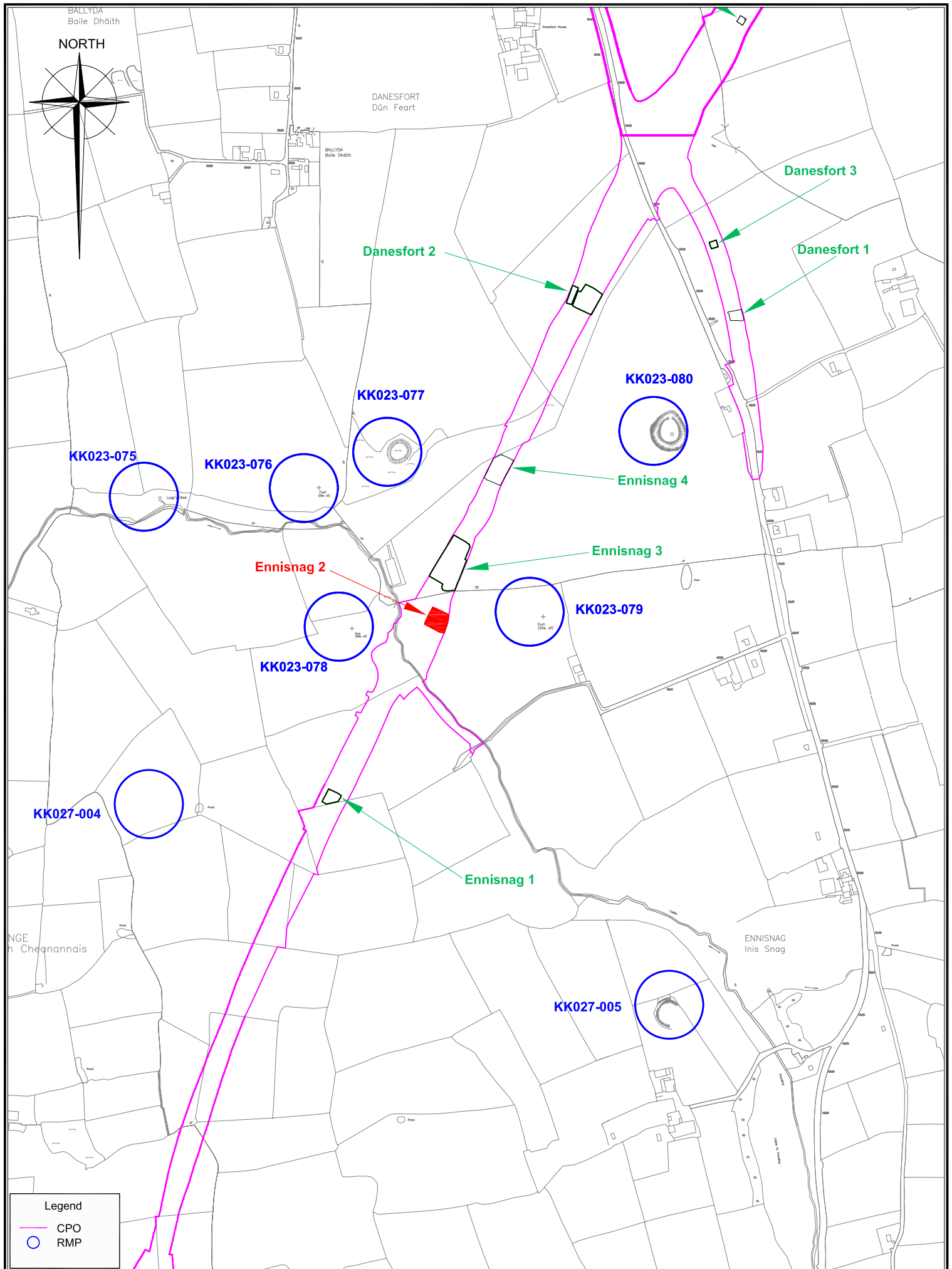
See Figure 2 for location.

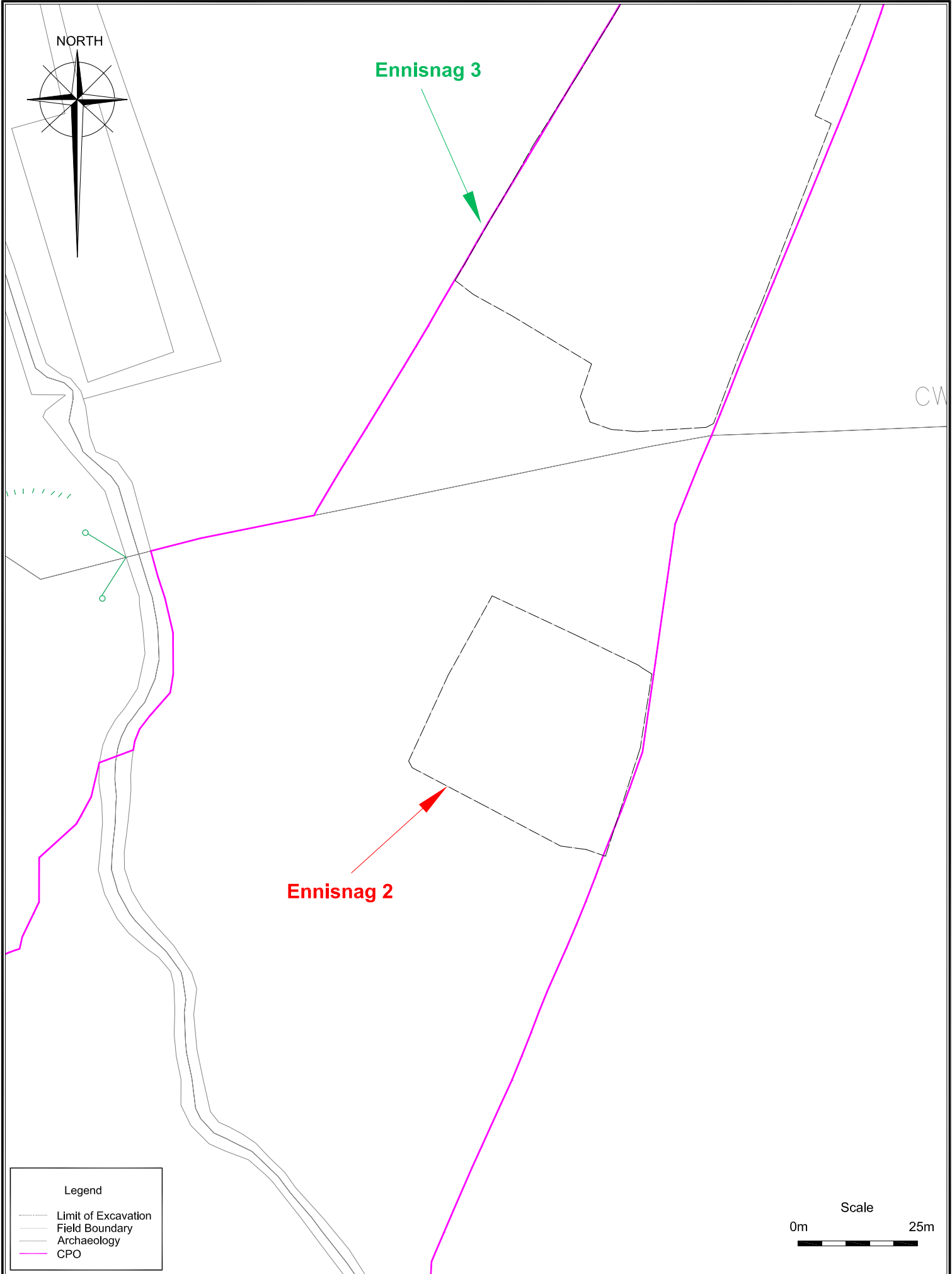
APPENDIX 2 LIST OF SITE NAMES AND TOWNLAND NAMES

New Site Name	Ministerial No.	Site Name	E Number	Contract
Baysrath 2	A032/	AR055	E3627	Phase 4
Baysrath 3	A032/	AR056	E3628	Phase 4
Baysrath 4	A032/	AR057	E3629	Phase 4
Croan 1	A032/	AR081	E3543	Phase 4
Danesfort 1	A032/	AR080B	E3541	Phase 4
Danesfort 2	A032/	AR078	E3540	Phase 4
Danesfort 3	A032/	AR080A	E3542	Phase 4
Danesfort 4	A032/	AR079	E3539	Phase 4
Danesfort 5	A032/	AR082	E3546	Phase 4
Danesfort 6	A032/	AR083	E3538	Phase 4
Danesfort 7	A032/	AR084	E3537	Phase 4
Danesfort 8	A032/	AR085	E3461	Phase 4
Danesfort 9	A032/	AR086	E3468	Phase 4
Danesfort 10	A032/	AR087	E3459	Phase 4
Danesfort 11	A032/	AR088	E3460	Phase 4
Danesfort 12	A032/	AR076	E3616	Phase 4
Danesfort 13	A032/	AR077	E3617	Phase 4
Danganbeg 1	A032/	AR058	E3606	Phase 4
Danganbeg 2	A032/	AR059	E3607	Phase 4
Danganbeg 3	A032/	AR060	E3671	Phase 4
Danganbeg 4	A032/	AR061	E3676	Phase 4
Ennisnag 1	A032/	AR074	E3614	Phase 4
Ennisnag 2	A032/	AR075	E3615	Phase 4
Kellsgrange 1	A032/	AR071	E3575	Phase 4
Kellsgrange 2	A032/	AR072	E3577	Phase 4
Kellsgrange 3	A032/	AR073	E3576	Phase 4
Knockadrina 1	A032/	AR062	E3677	Phase 4
Knockadrina 2	A032/	AR068	E3611	Phase 4
Rathduff 1	A032/	AR069	E3612	Phase 4
Rathduff Upper 1	A032/	AR070	E3613	Phase 4
Stonecarthy West 1	A032/	AR067	E3610	Phase 4
Tinvaun 1	A032/	AR063	E3678	Phase 4
Tinvaun 2	A032/	AR064	E3680	Phase 4
Tinvaun 3	A032/	AR065	E3608	Phase 4
Tinvaun 4	A032/	AR066	E3609	Phase 4



 <div>Irish Archaeological Consultancy Ltd.</div>	Title: Ennisnag 2 - General Site Location	Scale: As Shown
	Project: N9/ N10 Knocktopher to Powerstown Phase 4	Date: 24/04/07
	Client: Kilkenny County Council	Produced by: P Higgins
		Job No: J2432
		Figure No: 1





Irish
Archaeological
Consultancy Ltd.

Title: Ennisnag 2 - Location of site within development
Project: N9/N10 Phase 4
Client: Kilkenny County Council

Scale: 1:10000 @ A4
Date: 29/04/08
Produced by: P Higgins
Job No: J2432
Figure No: 2