

Carvalho, JS, Graham, B, Bocksberger, G, Maisels, F, Williamson, EA, Wich, SA, Sop, T, Amarasekaran, B, Barca, B, Barrie, A, Bergl, RA, Boesch, C, Boesch, H, Brncic, TM, Buys, B, Chancellor, R, Danquah, E, Doumbé, OA, Le-Duc, SY, Galat-Luong, A, Ganas, J, Gatti, S, Ghiurghi, A, Goedmakers, A, Granier, N, Hakizimana, D, Haurez, B, Head, J, Herbinger, I, Hillers, A, Jones, S, Junker, J, Maputla, N, Manasseh, EN, McCarthy, MS, Molokwu-Odozi, M, Morgan, BJ, Nakashima, Y, N'Goran, PK, Nixon, S, Nkempi, L, Normand, E, Nzoo, LDZ, Olson, SH, Payne, L, Petre, CA, Piel, AK, Pintea, L, Plumpre, AJ, Rundus, A, Serckx, A, Stewart, FA, Sunderland-Groves, J, Tagg, N, Todd, A, Vosper, A, Wenceslau, JFC, Wessling, EG, Willie, J and Kühn, HS

Predicting range shifts of African apes under global change scenarios

<http://researchonline.ljmu.ac.uk/id/eprint/15265/>

Article

Citation (please note it is advisable to refer to the publisher's version if you intend to cite from this work)

Carvalho, JS, Graham, B, Bocksberger, G, Maisels, F, Williamson, EA, Wich, SA, Sop, T, Amarasekaran, B, Barca, B, Barrie, A, Bergl, RA, Boesch, C, Boesch, H, Brncic, TM, Buys, B, Chancellor, R, Danquah, E, Doumbé, OA, Le-Duc, SY, Galat-Luong, A, Ganas, J, Gatti, S, Ghiurghi, A, Goedmakers, A.

LJMU has developed **LJMU Research Online** for users to access the research output of the University more effectively. Copyright © and Moral Rights for the papers on this site are retained by the individual authors and/or other copyright owners. Users may download and/or print one copy of any article(s) in LJMU Research Online to facilitate their private study or for non-commercial research. You may not engage in further distribution of the material or use it for any profit-making activities or any commercial gain.

The version presented here may differ from the published version or from the version of the record. Please see the repository URL above for details on accessing the published version and note that access may require a subscription.

For more information please contact researchonline@ljmu.ac.uk

Predicting range shifts of African apes under global change scenarios

Joana S. Carvalho^{1,2}  | Bruce Graham²  | Gaëlle Bocksberger³  |
 Fiona Maisels^{2,4}  | Elizabeth A. Williamson²  | Serge Wich¹  |
 Tenekwette Sop^{3,5} | Bala Amarasekaran⁶ | Benjamin Barca⁷ | Abdulai Barrie⁸ |
 Richard A. Bergl⁹ | Christophe Boesch³  | Hedwige Boesch³ | Terry M. Brncic⁶ |
 Bartelijntje Buys¹⁰  | Rebecca Chancellor¹¹ | Emmanuel Danquah¹²  |
 Osiris A. Doumbé¹³ | Stephane Y. Le-Duc¹⁴ | Anh Galat-Luong¹⁵ | Jessica Ganas¹⁶ |
 Sylvain Gatti¹⁷ | Andrea Ghiurghi¹⁸ | Annemarie Goedmakers¹⁰ | Nicolas Granier¹⁹ |
 Dismas Hakizimana²⁰ | Barbara Haurez²¹ | Josephine Head³ | Ilka Herbinger²² |
 Annika Hillers²³ | Sorrel Jones²⁴  | Jessica Junker⁵ | Nakedi Maputla²⁵ |
 Eno-Nku Manasseh²⁶ | Maureen S. McCarthy³  | Mary Molokwu-Odozi²⁷ |
 Bethan J. Morgan^{2,28,29} | Yoshihiro Nakashima³⁰ | Paul K. N'Goran²⁶  |
 Stuart Nixon³¹ | Louis Nkambi³² | Emmanuelle Normand³³ | Laurent D.Z. Nzooh²⁶ |
 Sarah H. Olson³⁴  | Leon Payne³⁵ | Charles-Albert Petre³⁶ | Alex K. Piel^{37,38} |
 Lilian Pinteá³⁹ | Andrew J. Plumptre⁴⁰  | Aaron Rundus⁴¹ | Adeline Serckx^{36,42} |
 Fiona A. Stewart^{1,37,38}  | Jacqueline Sunderland-Groves⁴³ | Nikki Tagg^{44,45}  |
 Angélique Todd⁴⁶ | Ashley Vosper⁴⁷ | José F.C. Wenceslau¹⁰  | Erin G. Wessling⁴⁸  |
 Jacob Willie⁴⁴  | Hjalmar S. Kühl^{3,5} 

¹School of Biological and Environmental Sciences, Liverpool John Moores University, Liverpool, UK

²Faculty of Natural Sciences, University of Stirling, Stirling, UK

³Max Planck Institute for Evolutionary Anthropology, Department of Primatology, Leipzig, Germany

⁴Global Conservation Program, Wildlife Conservation Society, Bronx, NY, USA

⁵German Centre for Integrative Biodiversity Research (iDiv), Halle-Jena-Leipzig, Leipzig, Germany

⁶Tacugama Chimpanzee Sanctuary, Freetown, Sierra Leone

⁷NatureMetrics, CABI Site, Surrey, UK

⁸Research for Evidence-based and Achievable Decisions - READSL, Freetown, Sierra Leone

⁹North Carolina Zoo, Asheboro, NC, USA

¹⁰Chimbo Foundation, Oudemirdum, Netherlands

¹¹Depts of Anthropology & Sociology and Psychology, West Chester University, West Chester, PA, USA

¹²Department of Wildlife and Range Management, Faculty of Renewable Natural Resources, Kwame Nkrumah University of Science and Technology, Kumasi, Ghana

¹³Sekakoh Organisation, Bafoussam, Cameroon

¹⁴WWF Gabon Country Programme Office, Libreville, Gabon

¹⁵IRD (French National Research Institute for Sustainable Development), Paris, France

This is an open access article under the terms of the Creative Commons Attribution License, which permits use, distribution and reproduction in any medium, provided the original work is properly cited.

© 2021 The Authors. *Diversity and Distributions* published by John Wiley & Sons Ltd.

- ¹⁶Sierra Rutile Limited, Freetown, Sierra Leone
- ¹⁷West African Primate Conservation Action (WAPCA), Accra, Ghana
- ¹⁸Independent Researcher, Rome, Italy
- ¹⁹Biotope, Meze, France
- ²⁰Department of Biology, University of Burundi, Bujumbura, Burundi
- ²¹Laboratory of Tropical Agroecology Plant Sciences, Gembloux Agro-Bio Tech, University of Liège, Liège, Belgium
- ²²WWF Germany, Berlin, Germany
- ²³Wild Chimpanzee Foundation, Congo Town, Monrovia, Liberia
- ²⁴RSPB Centre for Conservation Science, The Royal Society for the Protection of Birds, Sandy, UK
- ²⁵African Wildlife Foundation, Washington, DC, USA
- ²⁶WWF Cameroon Country Programme Office, Immeuble Panda, Cameroon
- ²⁷Fauna and Flora International, Oldest Congo Town, Liberia
- ²⁸San Diego Zoo Global, Escondido, CA, USA
- ²⁹Ebo Forest Research Project, Yaounde, Cameroon
- ³⁰College of Bioresource Science, Nihon University, Fujisawa, Japan
- ³¹Chester Zoo, Chester, UK
- ³²Environment and Rural Development Foundation, Buea, Cameroon
- ³³Wild Chimpanzee Foundation, Cologny, Switzerland
- ³⁴Wildlife Conservation Society, Health Program, NY, USA
- ³⁵Rio Tinto, Guinea, Guinea
- ³⁶Primatological Research Group, Behavioural Biology Unit, University of Liège, Quai Van Beneden, Liège, Belgium
- ³⁷Department of Anthropology, University of College London, London, UK
- ³⁸Greater Mahale Ecosystem Research and Conservation Project, Dar es Salaam, Tanzania
- ³⁹Conservation Science Department, the Jane Goodall Institute, Vienna, VA, USA
- ⁴⁰KBA Secretariat, c/o BirdLife International, Cambridge, UK
- ⁴¹Department of Psychology, West Chester University, West Chester, PA, USA
- ⁴²The Biodiversity Consultancy, Cambridge, UK
- ⁴³Department of Forest Resources Management, University of British Columbia, Vancouver, Canada
- ⁴⁴Centre for Research and Conservation, Antwerp Zoo Society, Antwerpen, Belgium
- ⁴⁵The Born Free Foundation, Horsham, UK
- ⁴⁶WWF-CAR, Bangui, Central African Republic
- ⁴⁷Frankfurt Zoological Society, Frankfurt, Germany
- ⁴⁸Department of Human Evolutionary Biology, Harvard University, Cambridge, MA, USA

Correspondence

Joana S. Carvalho, School of Biological and Environmental Sciences, Liverpool John Moores University, Liverpool, UK.
Email: joana.coleoptera@gmail.com

Hjalmar S. Kühl, Max Planck Institute for Evolutionary Anthropology, Department of Primatology, Deutscher Platz 6, Leipzig 04103, Germany.
Email: kuehl@eva.mpg.de

Editor: Juliano Sarmiento Cabral

Abstract

Aim: Modelling African great ape distribution has until now focused on current or past conditions, while future scenarios remain scarcely explored. Using an ensemble forecasting approach, we predicted changes in taxon-specific distribution under future scenarios of climate, land use and human populations for (1) areas outside protected areas (PAs) only (assuming complete management effectiveness of PAs), (2) the entire study region and (3) interspecies range overlap.

Location: Tropical Africa.

Methods: We compiled occurrence data ($n = 5,203$) on African apes from the IUCN A.P.E.S. database and extracted relevant climate-, habitat- and human-related predictors representing current and future (2050) conditions to predict taxon-specific range change under a best- and a worst-case scenario, using ensemble forecasting.

Results: The predictive performance of the models varied across taxa. Synergistic interactions between predictors are shaping African ape distribution, particularly

human-related variables. On average across taxa, a range decline of 50% is expected outside PAs under the best scenario if no dispersal occurs (61% in worst scenario). Otherwise, an 85% range reduction is predicted to occur across study regions (94% worst). However, range gains are predicted outside PAs if dispersal occurs (52% best, 21% worst), with a slight increase in gains expected across study regions (66% best, 24% worst). Moreover, more than half of range losses and gains are predicted to occur outside PAs where interspecific ranges overlap.

Main Conclusions: Massive range decline is expected by 2050, but range gain is uncertain as African apes will not be able to occupy these new areas immediately due to their limited dispersal capacity, migration lag and ecological constraints. Given that most future range changes are predicted outside PAs, Africa's current PA network is likely to be insufficient for preserving suitable habitats and maintaining connected ape populations. Thus, conservation planners urgently need to integrate land use planning and climate change mitigation measures at all decision-making levels both in range countries and abroad.

KEYWORDS

bonobo, chimpanzee, climate change, gorilla, great ape, human population scenarios, IUCN SSC A.P.E.S. database, land use change, protected areas, species distribution modelling

1 | INTRODUCTION

Currently, a major conservation challenge is to assess the potential future effects of climate and land use changes on species distributions, typically through the use of species distribution models (SDMs) and usually under a range of future environmental scenarios. SDMs are widely used to predict and map species' ecological niches through time and space (Elith & Leathwick, 2009; Guillera-Aroita et al., 2015; Hao et al., 2019). Importantly, SDMs can inform spatial prioritization decisions for conservation and management actions, such as identification of strategic locations for new conservation or survey sites, and predicting future distributions (Araújo & New, 2007; Elith & Leathwick, 2009; Guillera-Aroita et al., 2015).

Changes in climate and land use are among the main global threats to biodiversity, and therefore, how the synergistic interactions between these drivers impact species are an important area of research (Oliver & Morecroft, 2014). Newbold (2018) assessed the single and combined effects of future climate and land use change on local vertebrate biodiversity. They found that climate change is likely to be the principal driver of species range change in coming decades, equalling or surpassing the potential effects of land use change by 2070. Similar results were reported for orangutans (Struebig et al., 2015). Because human population growth is already an extinction threat to many species (McKee et al., 2013), it is also important to determine how human distribution will impact future species presence (Jones & O'Neill, 2016).

Many primates are facing imminent extinction, due to the direct impact of extensive habitat loss and fragmentation, land use change and hunting, and indirect effects linked to global commodity growth

and trade (Estrada et al., 2018). Climate change is a delocalized, multi-faceted driver to add to the list. It exposes many species, especially forest-dwelling primates, to climatically unsuitable conditions (Carvalho et al., 2019). Primates have relatively limited dispersal abilities for their slow reproduction, low population densities, dietary requirements and poor thermoregulation, and a predicted reduction of up to 86% of Neotropical primate ranges with $>3^{\circ}\text{C}$ warming is likely to constrain their dispersal, resulting in elevated risks of extinction (Carvalho et al., 2019).

All African great apes (hereafter African apes) are classified either as Endangered (mountain gorillas *Gorilla beringei beringei*, bonobos *Pan paniscus*, Nigeria-Cameroon chimpanzees *Pan troglodytes ellioti*, eastern chimpanzees *P. t. schweinfurthii* and central chimpanzees *P. t. troglodytes*) or Critically Endangered (Grauer's gorillas *G. b. graueri*, Cross River gorillas *Gorilla gorilla diehli*, western lowland gorillas *G. g. gorilla* and western chimpanzees *P. t. verus*) on the IUCN Red List of Threatened Species (www.iucnredlist.org) and are regarded as flagship species for conservation. African apes have faced dramatic changes in suitable environmental conditions over the past 20 years (Junker et al., 2012) as well as large population losses (Kuehl et al., 2017; Plumptre et al., 2016; Strindberg et al., 2018) caused by human activities and/or infectious epidemics (Walsh et al., 2003). Many African apes live in areas that are suitable for agricultural expansion and 58.7% of oil palm concessions currently overlap with African ape ranges (Wich, Garcia-Ulloa, Kühl, et al., 2014). Moreover, massive development corridors (Heinicke et al., 2019) and mining activities (Howard, 2019) in their geographic ranges are projected to expand considerably and to disrupt ape habitat connectivity and accelerate habitat loss.

Most African apes occur outside protected areas (PAs) (Freeman et al., 2018; Heinicke et al., 2019; Strindberg et al., 2018; Wich, Garcia-Ulloa, Köhl, et al., 2014). Importantly, PAs will not be exempt from climate change (Araújo et al., 2011), and shifts in species range as predicted by future scenarios would certainly determine the degree of species representation inside and outside PAs. Improving the effectiveness of conservation efforts inside and outside PAs as well as habitat connectivity would allow apes to disperse to new climatically suitable areas, and favour ape population survival in the long term.

The influence of the combined effects of current climate conditions and anthropogenic disturbances on African ape distribution have been widely explored (Clee et al., 2015; Hickey et al., 2013; Junker et al., 2012; Plumptre et al., 2016; Strindberg et al., 2018). In contrast, few studies have only examined future effects of climate change (Clee et al., 2015; Lehmann et al., 2010; Thorne et al., 2013) or human disturbances (Wich, Garcia-Ulloa, Köhl, et al., 2014), but how future synergistic interactions among climate, land use and human population changes will affect African apes and their habitat has been largely unexplored.

Here, we combine data on projected climate, land use and human population changes to model taxon-specific distribution of African apes for the year 2050. We use the most comprehensive database on ape populations available, the IUCN SSC Ape Populations, Environments and Surveys database (A.P.E.S.) to predict the distribution of great apes on the African continent under best- and worst-case scenarios. We subsequently employ an ensemble forecasting approach to reduce the uncertainty among different models and future scenarios (Araújo & New, 2007; Thuiller, 2004) and estimate the proportional change in range size in 2050 relative to current estimated range sizes for African apes by considering (1) only areas outside PAs by assuming complete effectiveness of PA management and consequently complete range stability within PAs, (2) the entire study region and (3) interspecies range overlap. Specifically, we addressed the following questions: (a) What is the extent of range loss by 2050? and (b) What is the proportion of new range predicted under future scenarios? Given that range loss and gain occur at different time scales, we predict that massive range loss is likely to occur in the next 30 years, but range gain is more uncertain given that African apes will not be able to occupy these new areas immediately due to their limited dispersal capacity (Schloss et al., 2012), migration lag and ecological constraints.

2 | METHODS

2.1 | African ape data

We compiled information on African ape occurrence held in the IUCN SSC A.P.E.S. database, a repository that includes a remarkable amount of information on population status, threats and conservation for several hundred sites (Heinicke et al., 2019). We extracted all occurrence data, which are georeferenced point data of direct sightings and great ape signs (mostly night nests) collected over 20 years (1998–2017).

We obtained a total of 62,469 presence records across all (sub)species (hereafter taxon) (Appendix S1 in Supporting Information, Table S1.1). We first checked the spatial autocorrelation of these records using Ripley's K-function (spatstat package; Baddeley et al., 2015) in R version 4.0.2 (R Development Core Team, 2020) and then rarefied the presence data by removing those points within a certain distance of one another (ecospat package; Di Cola et al., 2017), resulting in 5,203 presence records (Fig. S1.1, Table S1.1).

Although these data may be spatially biased as sampling effort is unevenly spread over the ape ranges, presence-only data are commonly the most available and hence most frequently used in SDMs (Phillips et al., 2009). The taxon occurrence data we used were collected during systematic site-based wildlife and human impact surveys, often in or close to PAs, Forest Stewardship Council (FSC)-certified and other logging concessions, or from habituated populations. Those surveys were generally based on some prior knowledge of occurrence which can distort an SDM (Phillips et al., 2009). Different approaches have been applied to account for biased datasets: random background, bias background, geographic thinning/filtering and environmental filtering (Aiello-Lammens et al., 2015; Fourcade et al., 2014; Phillips et al., 2009; Varela et al., 2014). Thus, we considered all approaches, and we included distances to roads, villages and PAs for the bias background as they are known to influence the distribution of African apes (Carvalho et al., 2013). We extracted data on roads and villages (from <http://sedac.ciesin.columbia.edu/>) and PAs (from <https://www.protectedplanet.net/>) within each taxon's range. For each taxon, we selected the approach with the best performance by visually inspecting the greatest overlap between taxon occurrence and each sampling bias layer (Fig. S1.2). Given that the geographic thinning approach performed best for all taxa, we integrated it into the SDMs for sampling bias correction (Fig. S1.2, Table S1.1). We also checked the spatial autocorrelation of this bias layer using Ripley's K-function (Fig. S1.1).

We delineated taxon-specific study regions to avoid unrealistic geographical predictions (Anderson & Gonzalez, 2011). For this, we created buffers bounding IUCN range polygons (IUCN (2020)) and including all occurrence data for each taxon (Table S1.1) (Jantz et al., 2016; Junker et al., 2012; Thorne et al., 2013). We defined the size of each buffer according to the range size of each taxon (Table S1.1). Whenever the buffer overlapped with a known geographic barrier to ape dispersal (e.g. major rivers), we disregarded that area.

Model algorithms require presence and absence data, so we randomly generated a set of 10,000 pseudo-absence occurrences (Barbet-Massin et al., 2012; Guillera-Aroita et al., 2015; Phillips et al., 2009) within the study region of each taxon, except for *G. b. beringei*. Only 1,000 background occurrences were created for mountain gorillas due to their small range.

2.2 | Predictor variables

We selected predictor variables based on their importance for African ape ecology (Clee et al., 2015; Lehmann et al., 2010), while

guaranteeing data availability for current and future (2050) conditions under best- and worst-case scenarios and minimizing correlation between variables. We compiled the following climatic variables for present and future conditions from Worldclim (periods of 1950–2000 and 2050, respectively; Hijmans et al., 2005): annual mean temperature (bio1), maximum temperature (bio5), annual precipitation (bio12) and precipitation seasonality (bio15). For future predictions, we chose a best scenario (i.e. high mitigation scenario, CCSM4 RCP 4.5) and a worst scenario (i.e. low mitigation scenario, HadGEM-ES RCP 8.5; for more details see Carvalho et al., 2019). Land use/cover data for current conditions and 2050 projections were compiled from the Land use Harmonization Project (period of 1500–2100; Table S1.1; Chini et al., 2014; Hurtt et al., 2011). This dataset represents a set of land use change and emission scenarios for studies of human impact on the past and future global carbon-climate system. Again, we considered a best scenario (MiniCam RCP 4.5) and a worst scenario (MESSAGE RCP 8.5) (Carvalho et al., 2019). We focused on the land use states that best represent land cover types where great apes can be found: primary land (i.e. natural vegetation, either forest or non-forest, undisturbed by humans), secondary land (i.e. natural vegetation previously disturbed by agriculture or wood harvesting) and cropland.

We based human population scenarios on a new set of future societal development scenarios, namely Shared Socioeconomic Pathways (SSP) (Jones & O'Neill, 2016). These future scenarios are based on both qualitative narratives of future development and quantitative projections of key elements such as human population growth at the national level, educational composition, urbanization and economic growth. These data are available from 2010 to 2100 for urban and rural populations. We used two future scenarios, SSP1 and SSP3, given that they represent best and worst scenarios, respectively.

Firstly, we extracted all variables for the extent of the study region of each taxon, resampled onto a 5km x 5km equal-area grid and transformed them into the WGS 1984 geographic coordinate system. Secondly, for each taxon, we computed and visualized a Pearson correlation matrix to assess the collinearity among variables (Fig. S1.3). To overcome existing issue with multicollinearity, we used a principal component analysis (PCA) instead of the original set of environmental variables (De Marco & Nóbrega, 2018). For that, we considered both present and future conditions to perform a PCA for each taxon and then used PCA loadings for each scenario to create PCA-derived variables. Finally, we selected the loadings of the first four PCA axes because they explained more than 79% of variance (Table S1.2). We performed data analyses using the software R and ArcMap version 10.7.1 (ESRI, 2011).

2.3 | SDM performance and ensemble forecasting

We predicted future African ape distributions using an ensemble forecasting approach (i.e. combining predictions from individual models into an ensemble as implemented in the biomod2 package;

Thuiller et al., 2016). We selected two correlative algorithms, generalized linear model (GLM) and generalized additive model (GAM), and three machine-learning techniques, Maxent, random forest (RF) and artificial neural networks (ANN) to build predictive SDMs for each species. These algorithms have been shown to perform well in previous SDMs (Elith et al., 2006; Thuiller et al., 2009). We decided to keep the default settings of “biomod2” for each algorithm to avoid an overwhelming complexity of the study outcomes and for ease of comparison between taxa.

For the present time period only, we assessed the predictive performance of each model through cross-validation using a bootstrap approach, that is partitioning of the presence data, using 80% of presences, randomly selected, for model calibration and 20% for evaluation, and repeating this procedure five times (Thuiller et al., 2009). We evaluated the performance of each model by the “true skill statistic” metric (TSS) (Allouche et al., 2006). TSS is an accuracy measure that accounts both for omission errors (i.e. the percentage of true presences predicted as absences are minimized) and commission errors (i.e. the percentage of true absences predicted as presences are minimized), is affected by prevalence (Leroy et al., 2018; Somodi et al., 2017) and ranges from -1 to 1 , with a prediction accuracy considered similar to “random” when ≤ 0 , “poor” in the range 0.2 – 0.5 , “useful” in the range 0.6 – 0.8 and “good” to “excellent” when > 0.8 (Allouche et al., 2006).

Ensemble forecasting has been widely employed to reduce the uncertainties associated with using a single algorithm and is a useful method to account for uncertainties of extrapolation of species–environment relationships outside the environments sampled by the species data (Araújo & New, 2007; Hao et al., 2019; Thuiller et al., 2009, 2019). We chose to apply the weighted mean ensemble method, which scales predictions of different models by weights based on some measure of predictive performance (Araújo & New, 2007; Thuiller et al., 2009). We included only individual models that reached at least “useful” predictive accuracies (TSS > 0.7) in ensemble models whenever possible (except for *G. b. graueri*, *G. g. gorilla* and *P. t. troglodytes* TSS > 0.5 ; *P. paniscus* and *P. t. verus* TSS > 0.6), to map the current and future range predicted for each taxon (Thuiller et al., 2019). For each modelling approach, we repeated the modelling five times (cross-validation) and given the five modelling algorithms and the three repetitions for variable importance (see below), we obtained an ensemble of 75 predicted distributions for each taxon for each time period (present and 2050) and future scenarios (best and worst scenarios).

2.4 | Relative importance of PCA-derived variables

For each taxon, we calculated the importance of PCA-derived variables by correlating the fitted values of the full models with those from the model in which the values of the PCA-derived variables were randomly permuted. We repeated this procedure three times (default settings of “biomod2” were used) and used the average Pearson's correlation to measure variable importance. A high

correlation between the values from the full and permuted models indicates that the PCA-derived variable has a low importance, contributing poorly to the model. We then ranked each PCA-derived variable value based on the correlation coefficients and reversed its relative importance and scaled from 0 to 1, the more influential PCA-derived variables for the model representing those with a higher relative importance (Thuiller et al., 2009). By identifying the most influential PCA-derived variable for the model, we further selected the original variables with the strongest loading (i.e. $>|0.4|$) to better describe the most important variables influencing each taxon's distribution.

2.5 | Species range change

For each taxon, we estimated the proportional change in range size, in 2050 compared to the present, by subtracting the future prediction ensemble output from the SDMs for the best and worst scenarios from that under current conditions. Firstly, we considered as a cut-off the maximum value of TSS to create binary predictive outputs from ensemble models (Thuiller et al., 2019). Secondly, we identified areas of range loss (i.e. sites where the species is present at the moment but is likely to be absent in the future), gain (i.e. sites where the species is absent at the moment but is likely to be present in the future), stability (i.e. sites where the species is potentially present at the moment and is likely to be present in the future) and absence (i.e. sites where the species is absent at the moment and is likely to be absent in the future). For this, we considered range change under two contrasting dispersal scenarios: full dispersal, which assumes

that the species can disperse to new suitable areas in the future; and no dispersal, which assumes that the species will be unable to disperse and only the overlap between present and future distributions will be the expected range for the species (Thomas et al., 2004). Finally, we extracted this information for (1) areas outside PAs only, (2) the entire study region and (3) range overlap where areas of loss, gain, stability and absence were the same between taxa.

3 | RESULTS

In general, predictive performance of the individual models based on TSS was "poor" to "excellent," depending on the algorithm and taxon (Appendix S2 in Supporting Information, Fig. S2.1a). On average, RF models performed best relative to GLMs which performed worst at predicting species distributions. Importantly, with TSS scores >0.5 ensemble models had good predictive performance and clearly outperformed individual models (Figure 1a, Fig S2.1a). For each taxon, the most important variables were the same in all individual models (Fig. S2.1b, Table S1.2). Our ensemble models indicated that the distribution of all taxa is strongly influenced by all predictors, particularly by human-related variables (Figures 1b, 2; Table S1.2).

We do not show results regarding range change for mountain and Cross River gorillas given the extreme range loss obtained, that is complete loss of suitable habitat and no new suitable habitat predicted under both future scenarios. Under the assumption of complete range stability in PAs, both future scenarios agree that, on average, more than half of suitable range is likely to be lost if no dispersal occurs (50% best, 61% worst) (Figures 3, 4, Fig S2.2,

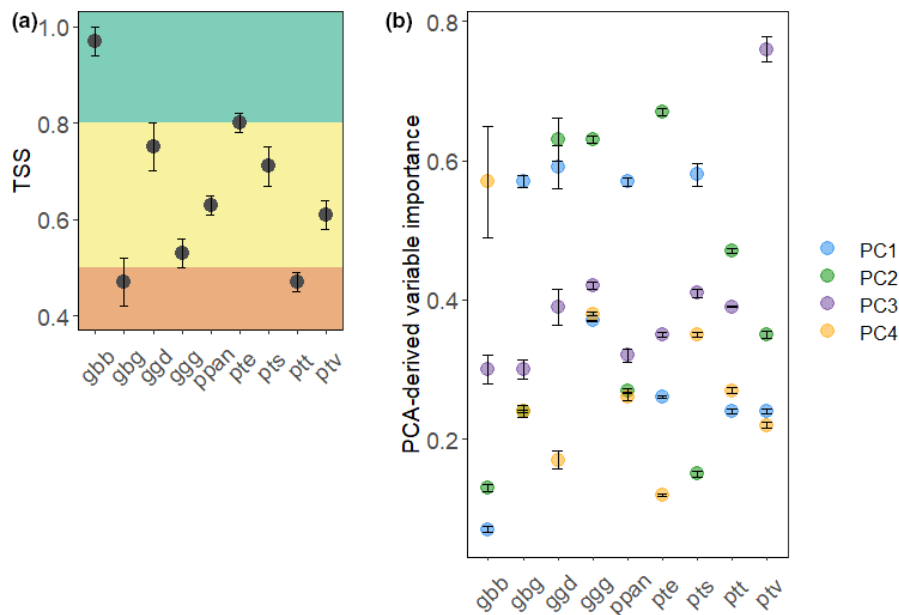


FIGURE 1 Results of the ensemble models for each African ape taxon. (a) Predictive performance (mean TSS values and respective standard deviation (SD)) and (b) PCA-derived variable importance (mean and SD of the correlation values). Taxon name abbreviations: gbb – *Gorilla beringei beringei*, gbg – *G. b. graueri*, ggd – *Gorilla gorilla diehli*, ggg – *G. g. gorilla*, ppan – *Pan paniscus*, pte – *Pan troglodytes ellioti*, pts – *P. t. schweinfurthii*, ptt – *P. t. troglodytes*, ptv – *P. t. verus*. Background colours in plot (a) corresponds to TSS performance: red – "poor," yellow – "useful," and green – "good to excellent." For details about the PCA loadings in plot (b), see Figure 2

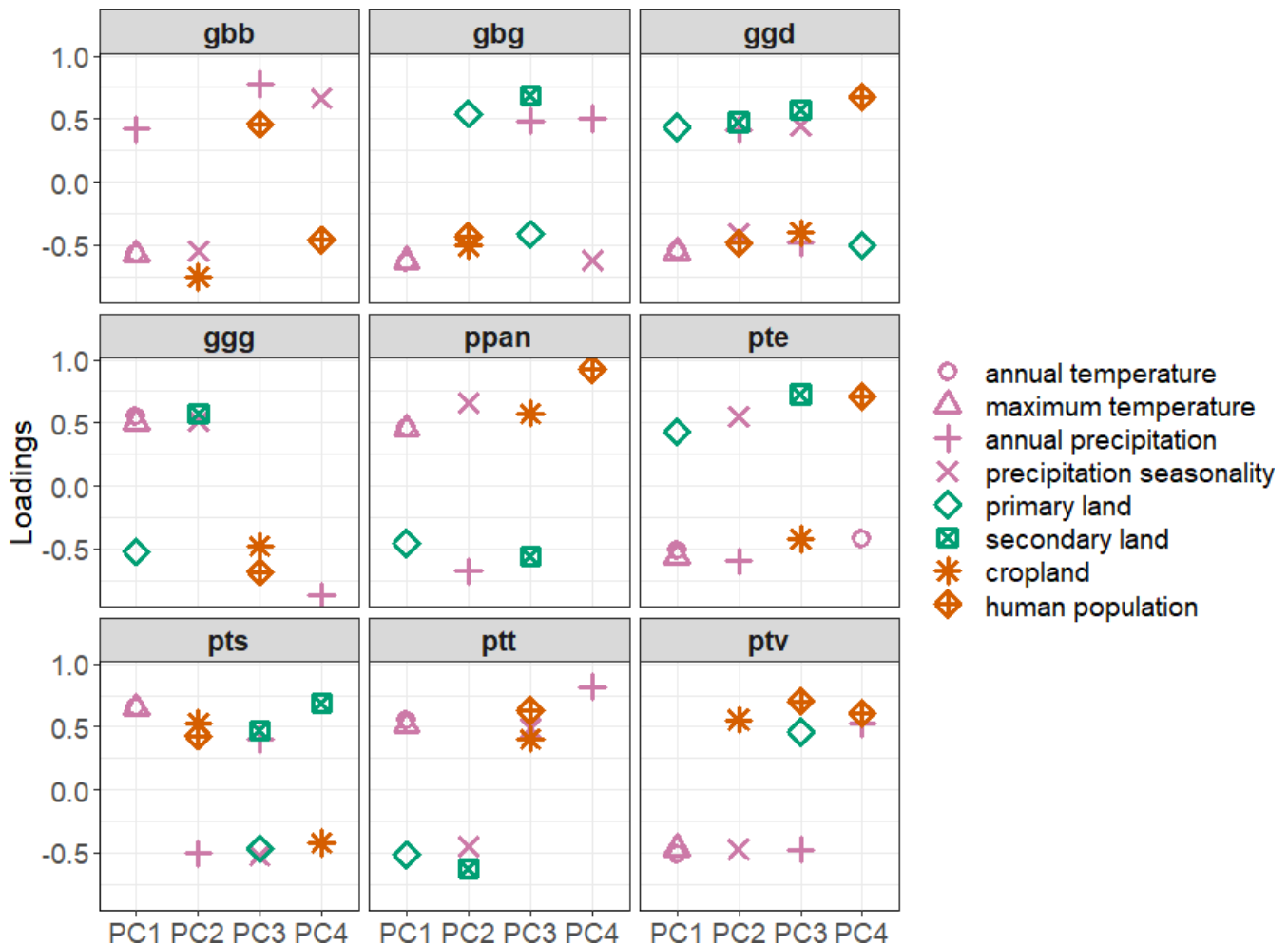


FIGURE 2 Taxon-specific variable loadings for the first four PCA axes. Only loadings $>|0.4|$ are shown. Taxon name abbreviations: gbb – *Gorilla beringei beringei*, gbg – *G. b. graueri*, ggd – *Gorilla gorilla diehli*, ggg – *G. g. gorilla*, ppan – *Pan paniscus*, pte – *Pan troglodytes ellioti*, pts – *P. t. schweinfurthii*, ptt – *P. t. troglodytes*, ptv – *P. t. verus*. For more details see Table S1.2. Legend colours represent the following: pink – climate-related variables, green – habitat-related variables and orange – human-related variables

Fig S2.3; Table 1). Most suitable range is predicted to be lost if the entire study region is considered (85% best, 94% worst). However, if dispersal occurs, most suitable range gain is predicted outside PAs under both future scenarios (52% best or 21% worst versus 66% best or 24% worst for the entire study region) (Figures 3, 4, Table 1). The range of *G. b. graueri* overlaps completely with that of *P. t. schweinfurthii*, but only 16% of the latter overlaps with the former (Figure 5). In contrast, both ranges of *G. g. gorilla* and *P. t. troglodytes* fully overlap (99% and 95%, respectively). Under both future scenarios, no reduction in range overlap between *G. b. graueri* and *P. t. schweinfurthii* is predicted if no dispersal occurs, but half of gains are expected outside PAs if dispersal occurs (Figure 5, Table 1). In contrast, more than half of losses and gains are predicted where the ranges of *G. g. gorilla* and *P. t. troglodytes* overlap, particularly outside of PAs. Moreover, range stability is expected outside PAs (*G. g. gorilla*: 27% best, 4% worst; *P. t. troglodytes*: 18% best, 4% worst).

3.1 | *Gorilla beringei beringei* (mountain gorilla)

All model algorithms performed equally well at predicting mountain gorilla distribution (Figure 1a, Fig S2.1a). Cropland, human population and secondary land were important predictors in the majority of individual and ensemble models, whereas annual precipitation and secondary land were the strongest determinants of mountain gorilla distribution in ANN models (Figures 1b, 2, Fig S2.1b; Table S1.2). This taxon is confined to fragmented habitat remnants in a sea of agriculture, within which human population (2–10 people km^{-2}) is low, and secondary land ($>60\%$) and annual precipitation (1,200–1,600 mm) are high (Fig. S1.4). All predictors will increase by 2050 under both future scenarios, except for annual precipitation and secondary land which are predicted to decrease under the worst scenario. The representativeness of PAs within the study region of mountain gorillas is the highest (36%) among all taxa.

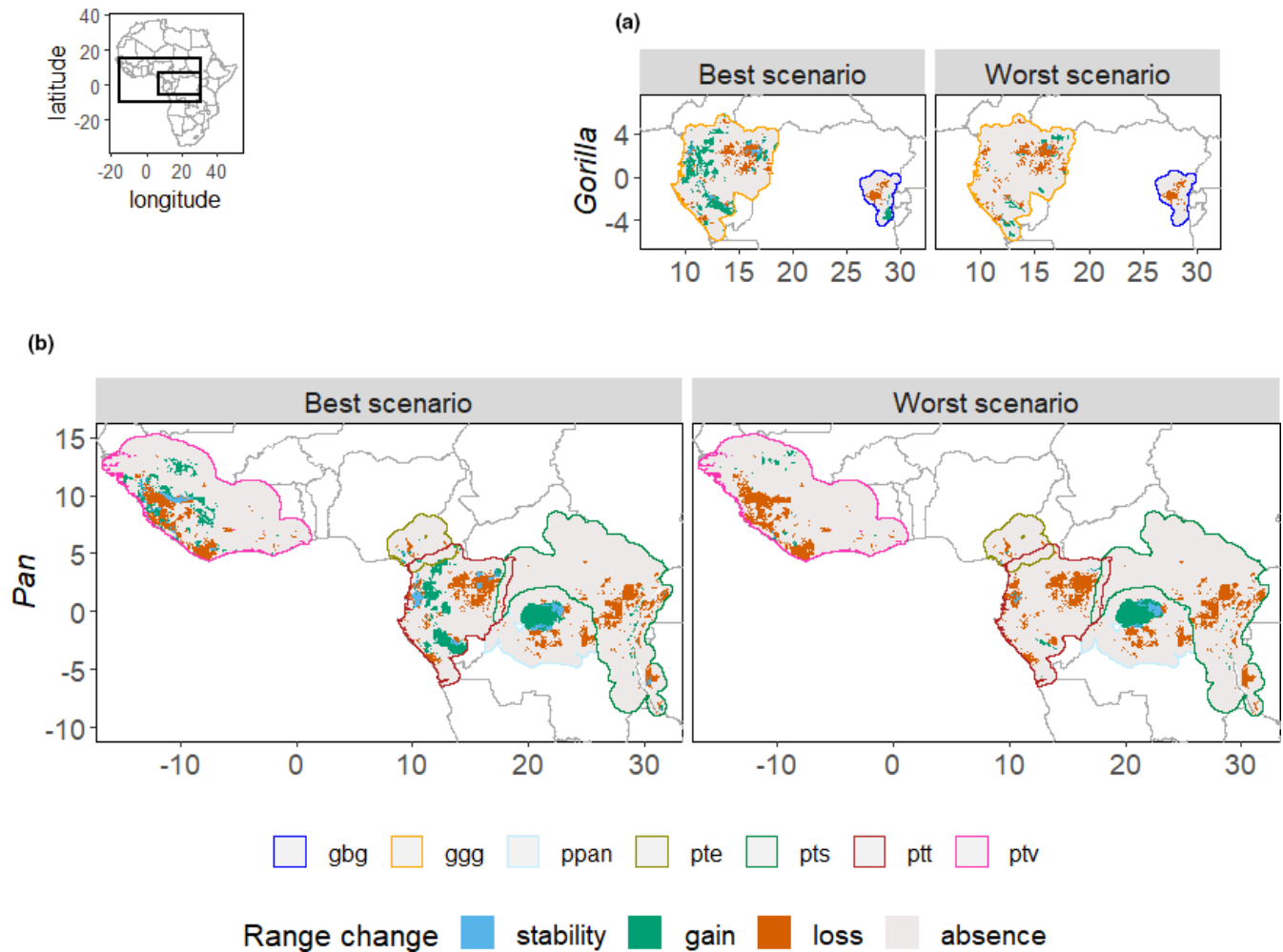


FIGURE 3 Ensemble forecasting of the future (best- and worst-case scenarios) range change for (a) *Gorilla* spp and (b) *Pan* spp based on weighted mean and the true skill statistics (TSS). Results for *G. beringei beringei* and *G. gorilla diehli* are not shown. Details of range change for each taxon are provided in Figure S2.3. Taxon name abbreviations: gbg – *G. b. graueri*, ggg – *G. g. gorilla*, ppan – *Pan paniscus*, pte – *Pan troglodytes ellioti*, pts – *P. t. schweinfurthii*, ptt – *P. t. troglodytes*, ptv – *P. t. verus*

3.2 | *Gorilla beringei graueri* (Grauer's gorilla)

On average, RF, Maxent and GAM models performed best in predicting the distribution of Grauer's gorillas (Fig S2.1a), in which annual and maximum temperatures were the most important explanatory variables (Figures 1b, 2, Fig S2.1b; Table S1.2). In contrast, cropland, human population and primary land were the most influential variables in those models that performed more poorly such as GLM and ANN models. The study region of this taxon is characterized by mean annual temperatures of 14–20°C, maximum temperatures of 20–30°C, low human population (5–10 people km⁻²), high primary land cover (>80%) and very low cropland cover (<8%) (Fig. S1.4). Both climatic variables, proportion of cropland and human population density are expected to increase and primary land to decrease under both future scenarios.

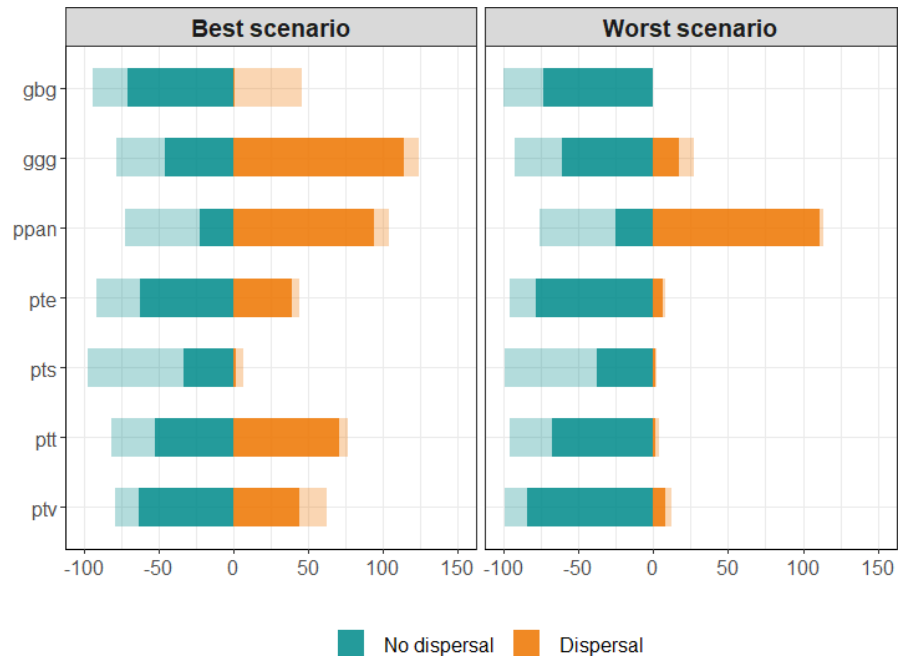
Only one quarter of the study region is in PAs. Under the assumption of complete range stability in PAs, Grauer's gorillas are predicted to lose three quarters of their range under both future scenarios if no dispersal occurs, with most range predicted to be lost

if the entire study region is considered (Figure 4, Fig S2.3; Table 1). No new suitable areas are expected outside PAs, but range gain is predicted inside PAs under the best scenario if dispersal occurs. Under both future scenarios, range loss is expected outside PAs where losses are also predicted for eastern chimpanzees (Figure 5, Table 1). Under the best scenario, almost half of the gains overlap with range gains predicted for eastern chimpanzees.

3.3 | *Gorilla gorilla diehli* (Cross River gorilla)

All model algorithms performed equally well at predicting the distribution of Cross River gorillas (Figure 1a, Fig S2.1a), and all predictors ranked equally in importance in both individual and ensemble models (Figure 1b, Fig S2.1b). Annual temperature, maximum temperature and primary land were strongly associated with PC1, and annual precipitation, seasonal variation in precipitation (precipitation seasonality), human population and secondary land with PC2 (Figure 2, Table S1.2). Annual temperatures of 20–26°C, maximum temperatures of

FIGURE 4 Predicted percentage change outside protected areas (filled bars) in African ape ranges by 2050 under the best- and the worst-case scenario, assuming either no dispersal (loss) and dispersal (gain). Shaded and filled bars together represent the results for the entire study region. Taxon name abbreviations: gbg – *G. b. graueri*, ggg – *G. g. gorilla*, ppan – *Pan paniscus*, pte – *Pan troglodytes ellioti*, pts – *P. t. schweinfurthii*, ptt – *P. t. troglodytes*, ptv – *P. t. verus*



28–32°C, annual precipitation of 1,800–2,400 mm and seasonal variation in precipitation (66–72 mm), at least 60% of primary land and the rest secondary land (>40%) and low human population (<4 people km⁻²) are suitable conditions found in the study region of this taxon (Fig. S1.4). According to both future scenarios, climatic variables and human population density are predicted to increase and the primary land to be lost completely. The proportion of PAs within the study region of Cross River gorillas is the lowest (9%) among all taxa.

3.4 | *Gorilla gorilla gorilla* (western lowland gorilla)

On average, RF and ANN models performed best at predicting western lowland gorilla distribution (Fig. S2.1a). All individual and ensemble models showed that seasonal variation of precipitation and the proportion of secondary land are important predictors of western lowland gorilla distribution (Figures 1b, 2, S2.1b; Table S1.2). Areas characterized by high seasonal variation in precipitation (30–80 mm) and presence of secondary land (20%–80%) provide suitable conditions for the persistence of this taxon (Fig. S1.4). According to both future scenarios, seasonal variation in precipitation will not change, but secondary land cover is predicted to increase under the best scenario.

Only 17% of the study region of western lowland gorillas is in PAs. Assuming no dispersal, more than half of predicted range loss will occur outside PAs under both future scenarios (Figure 4, Fig. S2.3; Table 1). If the entire study region is considered, a loss of more than three quarters of their range is predicted under the best scenario, and most of the taxon's range is likely to disappear under the worst scenario. With dispersal, however, substantial range increases outside PAs are predicted under both future scenarios, with a slight increase if the whole study region is considered (Figure 4, Fig. S2.3; Table 1). Under both future scenarios, most losses are expected outside PAs where losses for central chimpanzees were also predicted

(Figure 5, Table 1). Slightly higher values were found for the entire study region. Gains in range overlap are predicted outside PAs (Figure 5, Table 1). Importantly, 27% or 4% of range stability is expected where central chimpanzees are also predicted to be present under the best and worst scenarios, respectively.

3.5 | *Pan paniscus* (bonobo)

On average, RF and ANN models performed best in predicting bonobo distribution (Fig. S2.1a). Annual temperature, maximum temperature and primary land were important predictors of bonobo distribution in both individual and ensemble models (Figures 1b, 2, Fig. S2.1b; Table S1.2). Favourable environmental conditions in the study region of this taxon are annual temperatures of 24–26°C, high maximum temperatures of 30–33°C and primary land cover (>80%) (Fig. S1.4). Both temperature variables are predicted to increase and primary land to decrease in the future.

PAs represent only one fifth of the study region of bonobos. Under both future scenarios, only one third of its range outside PAs is predicted to be lost if no dispersal occurs, with almost three quarters predicted to be lost if including the entire study region (Figure 4, Fig. S2.3, Table 1). The taxon's range is predicted to expand into new areas and, if bonobos disperse, substantial range gains are predicted outside PAs under future scenarios, with a slight increase expected for the entire study region (Table 1).

3.6 | *Pan troglodytes ellioti* (Nigeria-Cameroon chimpanzee)

All model algorithms performed equally well at predicting Nigeria-Cameroon chimpanzee distribution (Figure 1a, Fig. S2.1a). Annual

Taxon	No dispersal scenario				Dispersal scenario			
	Outside PAs		Entire region		Outside PAs		Entire region	
	Best	Worst	Best	Worst	Best	Worst	Best	Worst
gbg*	71 (3)	74 (3)	94	100	-	-	46 (15)	-
ggg**	46 (45)	61 (61)	78 (66)	93 (70)	114 (49)	17 (10)	124 (49)	27 (10)
ppan	22	25	72	76	94	11	104	114
pte	62	79	91	96	39	6	44	8
pts*	33	38	97	99	2	2	7 (7)	2
ptt**	52 (43)	68 (44)	81 (45)	96 (48)	71 (55)	4 (1)	77 (55)	4 (4)
Ptv	63	84	79	99	44	8	63	12

Note: The percentage of interspecies range overlap is shown in parenthesis. Taxon name abbreviations: gbg – *G. b. graueri*, ggg – *G. g. gorilla*, ppan – *Pan paniscus*, pte – *Pan troglodytes ellioti*, pts – *P. t. schweinfurthii*, ptt – *P. t. troglodytes*, ptv – *P. t. verus*.

*range overlap between gbg and pts; **range overlap between ggg and ptt

precipitation and seasonal variation of precipitation were the best predictors in both individual and ensemble models (Figures 1b, 2, Fig. S2.1b; Table S1.2). Areas with high annual precipitation (2,000–3,500 mm) and pronounced seasonal variation of precipitation (50–90 mm) offer suitable conditions for Nigeria-Cameroon chimpanzees (Fig. S1.4). Under the worst scenario, both annual precipitation and seasonal variation of precipitation are predicted to decrease.

Only one tenth of the study region is covered by PAs. If no dispersal occurs, most of the taxon's range is predicted to be lost outside PAs under both future scenarios (Figure 4, Fig. S2.3; Table 1). Greater losses can be expected when the entire study region is considered. In contrast, if dispersal occurs, substantial range gains are predicted outside PAs, particularly under the best scenario, and a slight increase is expected for the entire study region (Table 1).

3.7 | *Pan troglodytes schweinfurthii* (eastern chimpanzee)

On average, RF and Maxent models performed best in explaining eastern chimpanzee distribution (Fig. S2.1a). Annual and maximum temperatures were important predictors in most individual and ensemble models, except for RF models, where annual precipitation, seasonal variation in precipitation, primary land and secondary land performed best (Figures 1b, 2, Fig. S2.1b; Table S1.2). Eastern chimpanzees encounter suitable conditions where the annual temperature is low (10–20°C), and maximum temperature is between 15 and 30 °C (Fig. S1.4). Under the worst scenario, both temperature variables are predicted to increase.

Only one fifth of the study region of eastern chimpanzees is in PAs. According to both future scenarios, one third of the taxon's range is expected to be lost outside PAs if no dispersal occurs, with most range predicted to be lost if the entire study region is considered (Figure 4, Fig. S2.3; Table 1). In contrast, if dispersal occurs, a slight gain is expected outside PAs under both future scenarios, with a slight range expansion into new suitable areas expected for the

TABLE 1 Results of the predicted change (%) in African ape ranges, assuming either no dispersal (loss) and dispersal (gain), for areas outside protected areas (PAs) only (assuming complete management effectiveness of PAs) and for the entire study region, by 2050 under the best- and the worst-case scenario

entire study region (Figure 4, Fig. S2.3; Table 1). None of the predicted losses are expected where their range overlaps with that of Grauer's gorilla, but all gains are expected where both ranges overlap (Figure 5, Table 1).

3.8 | *Pan troglodytes troglodytes* (central chimpanzee)

On average, RF, ANN and Maxent models performed best in predicting central chimpanzee distribution (Fig. S2.1a). Secondary land and seasonal variation of precipitation were the predictors of greatest importance in individual and ensemble models, except for GAM and Maxent models, where cropland and human population were slightly better predictors (Figures 1b, 2, Fig. S2.1b; Table S1.2). The study region of central chimpanzees is characterized by a relatively high percentage of secondary land (>40%), a human population density between 5 and 15 people km⁻², seasonal variation of precipitation between 30 and 80 mm and low percentage of cropland (<15%) (Fig. S1.4). The best scenario predicts secondary land expansion, an increase in human population and a reduction in cropland area. Large increases in all variables are predicted under the worst scenario.

As was found for eastern chimpanzees, only one fifth of the study region of central chimpanzees is covered by PAs. A reduction of three quarters of range is expected outside PAs under both future scenarios if no dispersal occurs, with most range expected to be lost if the entire study region is included (Figure 4, Fig. S2.3; Table 1). Predictions of range gains for central chimpanzees suggest that substantial suitable habitat will become available outside PAs under the best scenario, with a slight increase if assuming the entire study region (Table 1). Under both future scenarios, most losses were predicted outside PAs in the same geographic areas where losses for western lowland gorillas are also expected, with a slight increase expected for the entire study region (Figure 5, Table 1). The same trend was predicted for gains (Table 1).

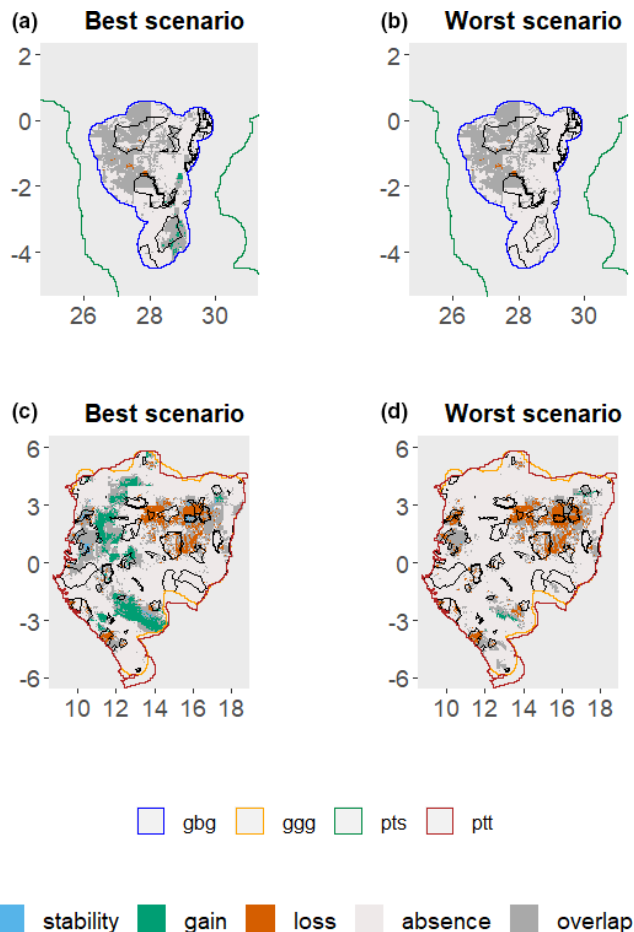


FIGURE 5 Predicted change in range overlap where areas of loss, gain, stability and absence were the same between (a) and (b) *Gorilla beringei graueri* (gbg) and *Pan troglodytes schweinfurthii* (pts), and between (c) and (d) *Gorilla gorilla gorilla* (ggg) and *Pan troglodytes troglodytes* (ptt), by 2050 under the best- and the worst-case scenario. The category “overlap” represents areas where taxa overlap but future range conditions are unlikely to be the same between them. The black lines represent protected areas

3.9 | *Pan troglodytes verus* (western chimpanzee)

On average, RF and ANN models performed best in predicting the distribution of western chimpanzees (Fig. S2.1a). Annual precipitation, primary land and human population were the most important variables in individual and ensemble models (Figures 1b, 2, Fig. S2.1b; Table S1.2). Current environmental conditions found in the study region of western chimpanzees are annual precipitation below 2,000 mm, a very high presence of human population (>10 people km^{-2}) and high primary land cover ($>60\%$) (Fig. S1.4). A large decrease in primary land and an increase in human population are predicted under both future scenarios.

Western chimpanzees have the widest geographic distribution among African apes; however, the representativeness of PAs is low (17%). Most range loss is predicted outside PAs under both future scenarios if no dispersal occurs, with a further increase in range loss if the entire study region is considered (Figure 4, Fig.

S2.3; Table 1). On the other hand, range gains are mostly anticipated outside PAs, particularly under the best scenario, if there is dispersal (Table 1).

4 | DISCUSSION

This is the first study to combine climate, land use and human population changes in an ensemble forecasting approach to predict taxon-specific distributions of African apes by 2050. All taxa are likely to experience marked range losses irrespective of whether complete effectiveness in PA management is assumed (50% best scenario, 66% worst scenario) or not (85% best scenario, 94% worst scenario). At the same time, new areas within taxon-specific study regions may become suitable (outside PAs: 52% best scenario, 21% worst scenario; entire study region: 66% best scenario, 24% worst scenario). Moreover, more than half of range losses and gains are expected to occur outside PAs where interspecific ranges overlap. Range gain and loss are processes which operate at very different time scales, and hundreds to thousands of years can be expected for a great ape to disperse into new suitable areas given its limited dispersal capacity (Schloss et al., 2012), migration lag and ecological constraints. The 30-year time frame considered here represents a bit more than an ape generation (Kuehl et al., 2017; Plumptre et al., 2016) and it is unlikely that migration into new areas during this time occurs to any greater extent. It is therefore very important that these results are not interpreted as indicating that range gain will definitely occur as effective protection of new suitable areas will need to be ensured for a great ape population to shift to such habitat. Importantly, massive range loss can be anticipated in the next 30 years given the 2%–7% of annual population decline previously estimated for great apes (Kuehl et al., 2017; Plumptre et al., 2016; Strindberg et al., 2018; Wich et al., 2016).

A previous study quantified changes in suitable environmental conditions for African apes between 1990 and 2000 and found that the greatest proportional reductions occurred for gorillas (*G. g. diehli*, with range losses of 59%; *G. b. graueri*, 52%; *G. g. gorilla*, 32%) and bonobos (*P. paniscus*, 29%) compared with chimpanzees (*P. t. troglodytes*, 17%; *P. t. verus*, 11%) (Junker et al., 2012). By incorporating variables derived from remote sensing into this habitat suitability model, a greater decline in suitable conditions was predicted for chimpanzees for the period 2000–2012 (*P. t. ellioti*, 35%; *P. t. schweinfurthii*, 89%; *P. t. troglodytes*, 66%; *P. t. verus*, 73%) (Jantz et al., 2016). Based on correlative models, half of the *P. t. ellioti* range was predicted to be lost by 2020 (Clee et al., 2015) while complete range collapse due to climate change was suggested for *G. b. beringei* by 2090 (Thorne et al., 2013). Given the small range of mountain gorillas and their highly restricted occurrence in mountain refuges as a result of human encroachment and the geographic barrier of the Rift Valley, one would expect them to be particularly susceptible to global warming and extinction. Thorne et al. (2013) compared correlative and mechanistic models to address the future effects of

climate change on mountain gorillas and found that correlative models predict more dramatic changes in range change than mechanistic models. In contrast, mechanistic models revealed that, if plant productivity remains unaffected, gorillas will be able to adapt to warming temperatures (Thorne et al., 2013).

Lehmann et al. (2010) employed a physiological/behavioural mechanistic approach to investigate how climate change under a worst scenario would influence African ape survival and reported that chimpanzees might lose 10% of current range and gorillas 75% by the year 2100. Our study concurs with these results for most gorilla taxa, but more than three quarters of chimpanzee range is predicted to be lost under both future scenarios if no dispersal occurs. However, our full dispersal scenario predicts range gains in new areas under both future scenarios for most taxa, in agreement with Lehmann's study. The different results regarding range loss predicted for chimpanzees can be explained as follows: (1) community size rather than animal density was considered in Lehmann's model and the minimum party size requirements were not allowed to vary in response to vegetation cover, otherwise losses up to 39% may be expected for chimpanzees; (2) the effect of climate change on great ape distribution is critically dependent on the minimum viable group size that apes require for survival, and a conservative value for minimum viable group sizes (i.e. 10 individuals) based on minimum observed group sizes (which is not exactly the same) was used in Lehmann et al. (2010). In contrast, if a greater number of individuals had been considered (i.e. 45 individuals, Lehmann et al., 2007) up to 50% of range loss would be expected for chimpanzees; (3) by including not only climatic variables as in Lehmann's study, but also relevant human-related variables known to have a strong effect on current great ape distribution, our models provide a better understanding of the combined effects of these global change drivers and imply that negative effects of climate change on African apes can be reduced through appropriate land use planning and management. Nevertheless, both approaches agree that future climate is predicted to dramatically change across African ape ranges.

Among the important climatic variables in determining resource availability and species distributions, and consequently, their effects on African ape time budgets, gorillas and chimpanzees are more sensitive to variations in temperature than in precipitation and they persist better in habitats with lower monthly temperature variation (Lehmann et al., 2010). Moreover, gorillas are predicted to be affected more than chimpanzees given the more restricted behavioural flexibility of gorillas to cope with temperature variation (Lehmann et al., 2010). Our study suggests that annual and maximum temperatures influence the distribution of most gorillas, bonobos and eastern chimpanzees, but not that of the other three subspecies of chimpanzee. Additionally, annual precipitation, and particularly its distribution over the wet and dry seasons, affects the distribution of most gorillas and most chimpanzees. These findings were also identified in shaping the distribution of Nigeria-Cameroon and central chimpanzees (Clee et al., 2015) and are indirect evidence of the marked influence of both temperature and precipitation on species niche with regard to dehydration and thermoregulation (Wessling et al., 2018).

Wich et al. (2014) investigated the representativeness of oil palm concessions within African ape ranges and found that more than half of the oil palm concessions are located within their current ranges. Moreover, potential future oil palm development is widely expected across their ranges, particularly in land outside PAs (Wich, Garcia-Ulloa, Köhl, et al., 2014). Thus, we can expect climate change to exacerbate range loss for African apes and consequently pose serious threats to species persistence, as they are anticipated to impact orangutans (Struebig et al., 2015). By integrating future climate and land use changes as well as human population scenarios, our predictions provide strong evidence for synergistic interactions among these global drivers constraining species distributions. We suggest that future studies assess how much of the new predicted suitable areas will African apes be able to colonize by considering a mechanistic approach that integrates population dynamics (as in Lehmann et al. 2010) and dispersal abilities.

4.1 | Limitations of distribution models

Modelling species responses to global environmental changes carries many uncertainties (Araújo & New, 2007; Thuiller et al., 2019). Using two future scenarios, two dispersal scenarios, an ensemble forecasting approach and including only a few but highly important predictors of the distribution of African apes, should have addressed potential sources of uncertainty in our distribution models (Brun et al., 2019; Thorne et al., 2013). A recent study proposed that SDMs include historical records to produce better predictions of range shifts rather than relying on contemporary records alone (Faurby & Araújo, 2018). This is important for large vertebrates given the direct effects of anthropogenic disturbances on their distribution, and many ranges being far from equilibrium under current environmental conditions (Faurby & Araújo, 2018). The species occurrences we used are from field sites and may only represent where African apes occur now, but do not take into account areas of potential distribution where they may once have occurred but have now been extirpated. Unfortunately, reliable information about historical ranges, especially hundreds or thousands of years ago, is not available. Thus, it is possible that our predictions of current African ape distribution have underestimated the diversity of niches suitable for these species, which consequently may have limited our model predictions under future conditions.

To simplify the interpretation of results and for a better comparison between taxa, we decided to keep the default settings of the algorithms, which may have resulted in uncertainty regarding model performance and resulting species distribution due to the differential sensitivity of each algorithm to species modelled, sampling effort and evaluation metric (Hallgren et al., 2019). We recommend investigating the sensitivity of the algorithms to their configuration settings on the resulting projected species distribution (Hallgren et al., 2019). In addition, we relied on pseudo-absences instead of true absences and considered a greater number of randomly

selected pseudo-absence points for those taxa with a larger study region, which may have introduced uncertainty given the differential sensitivity of each algorithm to the number of pseudo-absences (Barbet-Massin et al., 2012; Guillera-Aroita et al., 2015; Phillips et al., 2009). We thus recommend selecting the number of pseudo-absences and choosing the method to generate them depending on each algorithm (Barbet-Massin et al., 2012) and using true absences whenever available.

Model performance was evaluated through cross-validation using a bootstrap approach, which is a common procedure in SDMs (Thuiller et al., 2009). However, it can be problematic and lead to over-fitting models and inflated performance metrics, particularly in the presence of spatial autocorrelation (Telford & Birks, 2009; Wenger & Olden, 2012). Despite rarefying species points and creating sampling bias layers from these points, we could not reduce spatial autocorrelation completely and potentially it inflated the performance metric (i.e. TSS). To better deal with the effect of spatial autocorrelation, it would be useful if non-traditional cross-validation schemes such as block spatial CV and h-block CV would be implemented in future versions of the biomod2 package (Telford & Birks, 2009; Wenger & Olden, 2012).

Model performance also depends on spatial resolution of the environmental variables, particularly when variables are originally available at coarse resolutions (Wenger & Olden, 2012). The original resolution of the spatial layers of land use (at 50 km) and human population changes (at 15 km) potentially influenced the performance of our models, particularly in those species with narrow distributions such as mountain gorillas (Thorne et al., 2013) and Cross River gorillas, given the extreme trends in range loss predicted (Wenger & Olden, 2012). Therefore, it would be important to consider future scenarios for climate, land use and human population changes at finer scales once such spatial layers become available. Additionally, mechanistic approaches may be more appropriate for species with narrow distributions as large differences in range change can be obtained with different modelling approaches (Thorne et al., 2013). Mining concessions and granted mining claims are increasing dramatically across Africa, particularly threatening large ape populations in Guinea, Gabon and Liberia (Howard, 2019). It will be important to model the influence of this threat on future African ape distributions once appropriate spatial datasets become available.

Nevertheless, despite these potential sources of uncertainty in our distribution models, the predicted ranges under current conditions in this study (Fig. S2.2) are well in line with results from previous studies, importantly also for those taxa for which model algorithms had “poor” or “useful” performance (e.g. *G. g. gorilla* and *P. t. troglodytes* (Strindberg et al., 2018); *G. b. graueri* (Plumptre et al., 2016); and all African apes (Junker et al., 2012)).

4.2 | Conservation implications

Strindberg et al. (2018) found that western lowland gorillas and central chimpanzees, two sympatric taxa with 97% range overlap,

occur mostly outside PAs, and argued for “reinforcement of anti-poaching efforts both inside and outside protected areas (particularly where habitat quality is high and human impact is low), diligent disease control measures (including training, advocacy, and research into Ebola virus disease), and the preservation of high-quality habitat through integrated land use planning and implementation of best practices by the extractive and agricultural industries”. Our study suggests that both taxa will find environmentally suitable areas outside PAs, in line with our predictions for most African apes. Thus, outcomes from our SDMs should be integrated with a habitat connectivity analysis to optimize conservation land use planning and identify priority areas for these species (Freeman et al., 2018; Jones et al., 2018). This is extremely important given that many African PAs in ape ranges are separated from each other – although there is often transboundary connectivity (Santini et al., 2016). This is also of particular concern because great apes occur mostly outside PAs and have a low dispersal capacity due to their small population sizes, low population densities, dietary requirements and poor thermoregulation. It will be important to ensure objective assessments of human pressures and habitat conditions in potential PAs to avert species extinctions in the long term (Jones et al., 2018).

Taxon-specific frameworks of environmental and socio-economic trends (Estrada et al., 2018; Strindberg et al., 2018; Tranquilli et al., 2014) should be considered at all major decision-making levels in range countries and abroad to (1) improve the management of suitable areas predicted by our models within PAs; (2) increase the size of PAs, establish additional PAs and ensure habitat connectivity based on our results; (3) promote effective land use planning based on our maps to ensure that areas of current and future high conservation value are not converted into agricultural land or fragmented by roads; (4) establish responsible forest management planning (e.g. as currently practiced in logging concessions under FSC standards); (5) implement more effective law enforcement in ape ranges by anti-poaching teams whether inside and outside of PAs, supplemented by environmental education, community development, appropriate tourism programmes and research (IUCN & ICCN (2012); IUCN, 2014; Tranquilli et al., 2012, 2014); and (6) incorporate climate change into land use planning and propose mitigation measures on the conservation agenda for African apes and sympatric wildlife. Public-private partnerships have proven highly effective across the forest and savanna zones, where an NGO or other organization takes on management responsibility for a given site over one or more decades (Scholte et al., 2018).

5 | CONCLUSIONS

Our results corroborate other recent studies showing that African ape populations and their habitats are declining dramatically (Clee et al., 2015; Freeman et al., 2018; Hickey et al., 2013; Junker et al., 2012; Kuehl et al., 2017; Lehmann et al., 2010; Plumptre et al., 2016; Strindberg et al., 2018; Thorne et al., 2013). Our findings

should also be used to guide the prioritization of conservation efforts for these flagship species to avoid irreversible losses. Our study goes beyond previous work, which focused only on modelling the effects of climate change alone. Here, we also consider land use and human population changes, which advances our understanding of the joint effects of these key drivers on African ape distribution. Importantly, our findings suggest that some of the negative effects of climate change on African apes can be mitigated if appropriate land use planning and management action is taken. Given that all great ape taxa will find most suitable areas outside PAs, and that the existing network of PAs is inadequate for ensuring the long-term conservation of African apes (Strindberg et al., 2018), we support the argument that effective conservation strategies require taxon-specific conservation planning that focuses on existing and proposed PAs, the creation and/or management of which can be informed by our habitat suitability models. Additionally, efforts to maintain connectivity between the habitats predicted to be suitable in the future will be crucial for the survival of African apes. As an example, a country-wide approach has been undertaken in Gabon, where planning for the development of agriculture, road and rail links, and mineral extraction has been informed by wildlife and vegetation data in order to locate these activities in areas that are already degraded, and to avoid closed-canopy old-growth and remote forests (Government of Gabon, 2012; Strindberg et al., 2018). This will be an effective way of promoting habitat connectivity to maintain African ape populations and sympatric wildlife.

ACKNOWLEDGEMENTS

We are grateful to the governments and national authorities for research permissions, and field staff for logistical support and guidance during data collection. We would like to thank all organizations for sharing African ape survey data, particularly Antwerp Zoo Society, Born Free Foundation, Chimbo Foundation, Conservation Society of Sierra Leone, Environment and Rural Development Foundation, Fauna & Flora International, Frankfurt Zoological Society, Jane Goodall Institute, Rio Tinto, Royal Society for the Protection of Birds, San Diego Zoo Global, Sekakoh Organisation, Sierra Rutile Limited, Tacugama Chimpanzee Sanctuary, The Biodiversity Consultancy, West African Primate Conservation Action, Wild Chimpanzee Foundation, Wildlife Conservation Society, WWF-CAR, and World Wide Fund for Nature. A special thanks to numerous individuals for data sharing: Alastair McNeilage, Anna Binczik, Catherine Tayleur, Cleve Hicks, Damien Caillaud, David H. Humminbird, Emma Stokes, Takeshi Furuichi, Gay Reinartz, Genevieve Campbell, Hilde Vanleeuwe, Jennifer Moustgaard, Joel Gamys, John Hart, Jremy Lindsell, Julian Blanc, Noelle Kumpel, Patrick Guislain, Roger Fotso, Sebatién Regnaut and Stephanie Latour. We also thank Céline Bellard, Juliano Sarmento Cabral and the anonymous reviewers for insightful comments on earlier versions of the manuscript. JSC was funded by a University of Stirling Research Programme Fellowship. Open Access funding enabled and organized by Projekt DEAL.

CONFLICTS OF INTEREST

The authors declare there is no conflict of interest.

PEER REVIEW

The peer review history for this article is available at <https://publons.com/publon/10.1111/ddi.13358>.

DATA AVAILABILITY STATEMENT

All survey data are archived with the I.D. "AGP_rarefied_1998_2017_Carvalho_et_al" in the dryad repository (<https://doi.org/10.5061/dryad.h18931zks>). The R code is also available in this repository (Appendix S3). ODMAP protocol is available as Appendix S4 in Supporting Information.

ORCID

Joana S. Carvalho  <https://orcid.org/0000-0002-4235-1242>
 Bruce Graham  <https://orcid.org/0000-0002-3243-2532>
 Gaëlle Bocksberger  <https://orcid.org/0000-0002-3399-0405>
 Fiona Maisels  <https://orcid.org/0000-0002-0778-0615>
 Elizabeth A. Williamson  <https://orcid.org/0000-0001-6848-9154>
 Serge Wich  <https://orcid.org/0000-0003-3954-5174>
 Christophe Boesch  <https://orcid.org/0000-0001-9538-7858>
 Bartelijntje Buys  <https://orcid.org/0000-0002-6970-9793>
 Emmanuel Danquah  <https://orcid.org/0000-0002-8305-5706>
 Sorrel Jones  <https://orcid.org/0000-0002-3579-7254>
 Maureen S. McCarthy  <https://orcid.org/0000-0001-8729-2023>
 Paul K. N'Goran  <https://orcid.org/0000-0003-2933-5990>
 Sarah H. Olson  <https://orcid.org/0000-0002-8484-9006>
 Andrew J. Plumptre  <http://orcid.org/0000-0002-9333-4047>
 Fiona A. Stewart  <https://orcid.org/0000-0002-4929-4711>
 Nikki Tagg  <https://orcid.org/0000-0002-1397-3720>
 José F.C. Wenceslau  <https://orcid.org/0000-0001-5581-531X>
 Erin G. Wessling  <https://orcid.org/0000-0001-9661-4354>
 Jacob Willie  <https://orcid.org/0000-0002-8939-1321>
 Hjalmar S. Kühl  <https://orcid.org/0000-0002-4440-9161>

REFERENCES

- Aiello-Lammens, M. E., Boria, R. A., Radosavljevic, A., Vilela, B., & Anderson, R. P. (2015). spThin: An R package for spatial thinning of species occurrence records for use in ecological niche models. *Ecography*, 38(5), 541–545. <https://doi.org/10.1111/ecog.01132>
- Allouche, O., Tsoar, A., & Kadmon, R. (2006). Assessing the accuracy of species distribution models: Prevalence, kappa and the true skill statistic (TSS). *Journal of Applied Ecology*, 43(6), 1223–1232. <https://doi.org/10.1111/j.1365-2664.2006.01214.x>
- Anderson, R. P., & Gonzalez, I. (2011). Species-specific tuning increases robustness to sampling bias in models of species distributions: An implementation with Maxent. *Ecological Modelling*, 222(15), 2796–2811. <https://doi.org/10.1016/j.ecolmodel.2011.04.011>
- Araújo, M. B., Alagador, D., Cabeza, M., Nogués-Bravo, D., & Thuiller, W. (2011). Climate change threatens European conservation areas. *Ecology Letters*, 14(5), 484–492. <https://doi.org/10.1111/j.1461-0248.2011.01610.x>
- Araújo, M. B., & New, M. (2007). Ensemble forecasting of species distributions. *Trends in Ecology and Evolution*, 22(1), 42–47. <https://doi.org/10.1016/j.tree.2006.09.010>
- Baddeley, A., Rubak, E., & Turner, R. (2015). *Spatial point patterns: Methodology and applications with R*. Chapman and Hall/CRC Press. <http://www.crcpress.com/Spatial-Point-Patterns-Methodolog>

- y-and-Applications-with-R/Baddeley-Rubak-Turner/9781482210200/
- Barbet-Massin, M., Jiguet, F., Albert, C. H., & Thuiller, W. (2012). Selecting pseudo-absences for species distribution models: How, where and how many? *Methods in Ecology and Evolution*, 3(2), 327–338. <https://doi.org/10.1111/j.2041-210X.2011.00172.x>
- Brun, P., Thuiller, W., Chauvier, Y., Pellissier, L., Wüest, R. O., Wang, Z., & Zimmermann, N. E. (2019). Model complexity affects species distribution projections under climate change. *Journal of Biogeography*, 47(1), 130–142. <https://doi.org/10.1111/jbi.13734>
- Carvalho, J. S., Graham, B., Rebelo, H., Bocksberger, G., Meyer, C. F. J., Wich, S., & Kühl, H. S. (2019). A global risk assessment of primates under climate and land use/cover scenarios. *Global Change Biology*, 25(9), 3163–3178. <https://doi.org/10.1111/gcb.14671>
- Carvalho, J. S., Marques, T. A., & Vicente, L. (2013). Population Status of *Pan troglodytes verus* in Lagoas de Cufada Natural Park, Guinea-Bissau. *PLoS ONE*, 8(8), e71527. <https://doi.org/10.1371/journal.pone.0071527>
- Chini, L. P., Hurr, G. C., & Frolking, S. (2014). *Harmonized global land use for years 1500–2100, V1. Data set*. Available on-line [http://daac.ornl.gov]. from Oak Ridge National Laboratory Distributed Active Archive Center. <https://doi.org/10.3334/ORNLDAAC/1248>
- De Marco, P., & Nóbrega, C. C. (2018). Evaluating collinearity effects on species distribution models: An approach based on virtual species simulation. *PLoS ONE*, 13(9), e0202403. <https://doi.org/10.1371/journal.pone.0202403>
- Di Cola, V., Broennimann, O., Petitpierre, B., Breiner, F. T., D'Amen, M., Randin, C., Engler, R., Pottier, J., Pio, D., Dubuis, A., Pellissier, L., Mateo, R. G., Hordijk, W., Salamin, N., & Guisan, A. (2017). Ecospat: An R package to support spatial analyses and modeling of species niches and distributions. *Ecography*, 40(6), 774–787. <https://doi.org/10.1111/ecog.02671>
- Elith, J., H. Graham, C., P. Anderson, R., Dudík, M., Ferrier, S., Guisan, A., J. Hijmans, R., Huettmann, F., R. Leathwick, J., Lehmann, A., Li, J., G. Lohmann, L., A. Loiselle, B., Manion, G., Moritz, C., Nakamura, M., Nakazawa, Y., McC. M. Overton, J., Townsend Peterson, A., ... E. Zimmermann, N. (2006). Novel methods improve prediction of species' distributions from occurrence data. *Ecography*, 29(2), 129–151. <https://doi.org/10.1111/j.2006.0906-7590.04596.x>
- Elith, J., & Leathwick, J. R. (2009). Species distribution models: Ecological explanation and prediction across space and time. *Annual Review of Ecology Evolution and Systematics*, 40(1), 677–697. <https://doi.org/10.1146/annurev.ecolsys.110308.120159>
- Estrada, A., Garber, P. A., Mittermeier, R. A., Wich, S., Gouveia, S., Dobrovolski, R., Nekaris, K., Nijman, V., Rylands, A. B., Maisels, F., Williamson, E. A., Bicca-Marques, J., Fuentes, A., Jerusalinsky, L., Johnson, S., Rodrigues de Melo, F., Oliveira, L., Schwitzer, C., Roos, C., ... Setiawan, A. (2018). Primates in peril: The significance of Brazil, Madagascar, Indonesia and the Democratic Republic of the Congo for global primate conservation. *PeerJ*, 6, e4869. <https://doi.org/10.7717/peerj.4869>
- Faurby, S., & Araújo, M. B. (2018). Anthropogenic range contractions bias species climate change forecasts. *Nature Climate Change*, 8(3), 252–256. <https://doi.org/10.1038/s41558-018-0089-x>
- Fourcade, Y., Engler, J. O., Rödder, D., & Secondi, J. (2014). Mapping species distributions with MAXENT using a geographically biased sample of presence data: A performance assessment of methods for correcting sampling bias. *PLoS ONE*, 9(5), e97122. <https://doi.org/10.1371/journal.pone.0097122>
- Freeman, B., Roehrdanz, P. R., & Peterson, A. T. (2018). Modeling endangered mammal species distributions and forest connectivity across the humid Upper Guinea lowland rainforest of West Africa. *Biodiversity and Conservation*, 28(3), 671–685. <https://doi.org/10.1007/s10531-018-01684-6>
- Government of Gabon (2012). *Plan strategique Gabon emergent*.
- Guillera-Aroita, G., Lahoz-Monfort, J. J., Elith, J., Gordon, A., Kujala, H., Lentini, P. E., McCarthy, M. A., Tingley, R., & Wintle, B. A. (2015). Is my species distribution model fit for purpose? Matching data and models to applications. *Global Ecology and Biogeography*, 24(3), 276–292. <https://doi.org/10.1111/geb.12268>
- Hallgren, W., Santana, F., Low-Choy, S., Zhao, Y., & Mackey, B. (2019). Species distribution models can be highly sensitive to algorithm configuration. *Ecological Modelling*, 408, 108719. <https://doi.org/10.1016/j.ecolmodel.2019.108719>
- Hao, T., Elith, J., Guillera-Aroita, G., & Lahoz-Monfort, J. J. (2019). A review of evidence about use and performance of species distribution modelling ensembles like BIOMOD. *Diversity and Distributions*, 25(5), 839–852. <https://doi.org/10.1111/ddi.12892>
- Heinicke, S., Mundry, R., Boesch, C., Amarasekaran, B., Barrie, A., Brncic, T., Brugière, D., Campbell, G., Carvalho, J., Danquah, E., Dowd, D., Eshuis, H., Fleury-Brugière, M.-C., Gamys, J., Ganas, J., Gatti, S., Ginn, L., Goedmakers, A., Granier, N., ... Kühl, H. S. (2019). Advancing conservation planning for western chimpanzees using IUCN SSC A.P.E.S. – The case of a taxon-specific database. *Environmental Research Letters*, 14(6), 064001. <https://doi.org/10.1088/1748-9326/AB1379>
- Hickey, J. R., Nackoney, J., Nibbelink, N. P., Blake, S., Bonyenge, A., Cox, S., Dupain, J., Emetshu, M., Furuichi, T., Grossmann, F., Guislain, P., Hart, J., Hashimoto, C., Ikembelo, B., Ilambu, O., Inogwabini, B.-I., Liengola, I., Lokasola, A. L., Lushimba, A., ... Kühl, H. S. (2013). Human proximity and habitat fragmentation are key drivers of the rangewide bonobo distribution. *Biodiversity and Conservation*, 22(13–14), 3085–3104. <https://doi.org/10.1007/s10531-013-0572-7>
- Hijmans, R. J., Cameron, S. E., Parra, J. L., Jones, P. G., & Jarvis, A. (2005). Very high resolution interpolated climate surfaces for global land areas. *International Journal of Climatology*, 25(15), 1965–1978. <https://doi.org/10.1002/joc.1276>
- Howard, M. (2019). *Safeguarding Africa's great apes*. University of York.
- Hurr, G. C., Chini, L. P., Frolking, S., Betts, R. A., Feddema, J., Fischer, G., Fisk, J. P., Hibbard, K., Houghton, R. A., Janetos, A., Jones, C. D., Kindermann, G., Kinoshita, T., Klein Goldewijk, K., Riahi, K., Shevliakova, E., Smith, S., Stehfest, E., Thomson, A., ... Wang, Y. P. (2011). Harmonization of land-use scenarios for the period 1500–2100: 600 years of global gridded annual land-use transitions, wood harvest, and resulting secondary lands. *Climatic Change*, 109(1–2), 117–161. <https://doi.org/10.1007/s10584-011-0153-2>
- IUCN (2014). *Regional Action Plan for the Conservation of Western Lowland Gorillas and Central Chimpanzees 2015–2025*.
- IUCN (2020). *IUCN Red List of threatened species. Version 2020*. <http://www.IUCN.redlist.org>. Downloaded on 9 July 2020.
- IUCN and ICCN. (2012). Bonobo (*Pan paniscus*): Conservation Strategy 2012–2022.
- Jantz, S., Pinte, L., Nackoney, J., & Hansen, M. (2016). Landsat ETM+ and SRTM data provide near real-time monitoring of chimpanzee (*Pan troglodytes*) habitats in Africa. *Remote Sensing*, 8(5), 427. <https://doi.org/10.3390/rs8050427>
- Jones, B., & O'Neill, B. C. (2016). Spatially explicit global population scenarios consistent with the Shared Socioeconomic Pathways. *Environmental Research Letters*, 11(8), 084003. <https://doi.org/10.1088/1748-9326/11/8/084003>
- Jones, K. R., Venter, O., Fuller, R. A., Allan, J. R., Maxwell, S. L., Negret, P. J., & Watson, J. E. M. (2018). One-third of global protected land is under intense human pressure. *Science*, 360(6390), 788–791. <https://doi.org/10.1126/science.aap9565>
- Junker, J., Blake, S., Boesch, C., Campbell, G., Toit, L. D., Duvall, C., Ekobo, A., Etoga, G., Galat-Luong, A., Gamys, J., Ganas-Swaray, J., Gatti, S., Ghiurghi, A., Granier, N., Hart, J., Head, J., Herbing, I., Hicks, T. C., Huijbregts, B., ... Kuehl, H. S. (2012). Recent decline in

- suitable environmental conditions for African great apes. *Diversity and Distributions*, 18(11), 1077–1091. <https://doi.org/10.1111/ddi.12005>
- Kühl, H. S., Sop, T., Williamson, E. A., Mundry, R., Brügière, D., Campbell, G., Cohen, H., Danquah, E., Ginn, L., Herbinger, I., Jones, S., Junker, J., Kormos, R., Kouakou, C. Y., N'Goran, P. K., Normand, E., Shutt-Phillips, K., Tickle, A., Vendras, E., ... Boesch, C. (2017). The Critically endangered western chimpanzee declines by 80%. *American Journal of Primatology*, 79(9), e22681. <https://doi.org/10.1002/ajp.22681>
- Lehmann, J., Korstjens, A., & Dunbar, R. I. M. (2007). Fission–fusion social systems as a strategy for coping with ecological constraints: A primate case. *Evolutionary Ecology*, 21(5), 613–634. <https://doi.org/10.1007/s10682-006-9141-9>
- Lehmann, J., Korstjens, A. H., & Dunbar, R. I. M. (2010). Apes in a changing world - The effects of global warming on the behaviour and distribution of African apes. *Journal of Biogeography*, 37(12), 2217–2231. <https://doi.org/10.1111/j.1365-2699.2010.02373.x>
- Leroy, B., Delsol, R., Hugué, B., Meynard, C. N., Barhoumi, C., Barbet-Massin, M., & Bellard, C. (2018). Without quality presence-absence data, discrimination metrics such as TSS can be misleading measures of model performance. *Journal of Biogeography*, 45(9), 1994–2002. <https://doi.org/10.1111/jbi.13402>
- McKee, J., Chambers, E., & Guseman, J. (2013). Human population density and growth validated as extinction threats to mammal and bird species. *Human Ecology*, 41(5), 773–778. <https://doi.org/10.1007/s10745-013-9586-8>
- Newbold, T. (2018). Future effects of climate and land-use change on terrestrial vertebrate community diversity under different scenarios. *Proceedings. Biological Sciences*, 285(1881), 20180792. <https://doi.org/10.1098/rspb.2018.0792>
- Oliver, T. H., & Morecroft, M. D. (2014). Interactions between climate change and land use change on biodiversity: Attribution problems, risks, and opportunities. *Wiley Interdisciplinary Reviews: Climate Change*, 5(3), 317–335. <https://doi.org/10.1002/wcc.271>
- Phillips, S. J., Dudík, M., Elith, J., Graham, C. H., Lehmann, A., Leathwick, J., & Ferrier, S. (2009). Sample selection bias and presence-only distribution models: Implications for background and pseudo-absence data. *Ecological Applications*, 19(1), 181–197. <https://doi.org/10.1890/07-2153.1>
- Plumptre, A. J., Nixon, S., Kujirakwinja, D. K., Vieilledent, G., Critchlow, R., Williamson, E. A., Nishuli, R., Kirkby, A. E., & Hall, J. S. (2016). Catastrophic decline of world's largest primate: 80% loss of Grauer's Gorilla (*Gorilla beringei graueri*) population justifies Critically Endangered status. *PLoS ONE*, 11(10), e0162697. <https://doi.org/10.1371/journal.pone.0162697>
- R Development Core Team (2020). *R: A language and environment for statistical computing*. R Foundation for Statistical Computing. ISBN 3-900051-07-0, <http://www.R-project.org/> (4.0.2).
- Santini, L., Saura, S., & Rondinini, C. (2016). Connectivity of the global network of protected areas. *Diversity and Distributions*, 22(2), 199–211. <https://doi.org/10.1111/ddi.12390>
- Schloss, C. A., Nuñez, T. A., & Lawler, J. J. (2012). Dispersal will limit ability of mammals to track climate change in the Western Hemisphere. *Proceedings of the National Academy of Sciences USA*, 109(22), 8606–8611. <https://doi.org/10.1073/pnas.1116791109>
- Scholte, P., Agnangoye, J.-P., Chardonnet, B., Eloma, H.-P., Nchoutpouen, C., & Ngoga, T. (2018). A central African perspective on delegated protected area management. *Tropical Conservation Science*, 11, 194008291879662. <https://doi.org/10.1177/1940082918796621>
- Sesink Clee, P. R., Abwe, E. E., Ambahe, R. D., Anthony, N. M., Fotso, R., Locatelli, S., Maisels, F., Mitchell, M. W., Morgan, B. J., Pokempner, A. A., & Gonder, M. K. (2015). Chimpanzee population structure in Cameroon and Nigeria is associated with habitat variation that may be lost under climate change. *BMC Evolutionary Biology*, 15(1), 2. <https://doi.org/10.1186/s12862-014-0275-z>
- Somodi, I., Lepesi, N., & Botta-Dukát, Z. (2017). Prevalence dependence in model goodness measures with special emphasis on true skill statistics. *Ecology and Evolution*, 7(3), 863–872. <https://doi.org/10.1002/ece3.2654>
- Strindberg, S., Maisels, F., Williamson, E. A., Blake, S., Stokes, E. J., Aba'a, R., Abitsi, G., Agbor, A., Ambahe, R. D., Bakabana, P. C., Bechem, M., Berlemont, A., Bokoto de Semboli, B., Boundja, P. R., Bout, N., Breuer, T., Campbell, G., De Wachter, P., Ella Akou, M., ... Wilkie, D. S. (2018). Guns, germs, and trees determine density and distribution of gorillas and chimpanzees in Western Equatorial Africa. *Science Advances*, 4(4), <https://doi.org/10.1126/sciadv.aar2964>
- Struebig, M. J., Fischer, M., Gaveau, D. L. A., Meijaard, E., Wich, S. A., Gonner, C., Sykes, R., Wiltng, A., & Kramer-Schadt, S. (2015). Anticipated climate and land-cover changes reveal refuge areas for Borneo's orang-utans. *Global Change Biology*, 21(8), 2891–2904. <https://doi.org/10.1111/gcb.12814>
- Telford, R. J., & Birks, H. J. B. (2009). Evaluation of transfer functions in spatially structured environments. *Quaternary Science Reviews*, 28(13–14), 1309–1316. <https://doi.org/10.1016/j.quascirev.2008.12.020>
- Thomas, C. D., Cameron, A., Green, R. E., Bakkenes, M., Beaumont, L. J., Collingham, Y. C., Erasmus, B. F. N., de Siqueira, M. F., Grainger, A., Hannah, L., Hughes, L., Huntley, B., van Jaarsveld, A. S., Midgley, G. F., Miles, L., Ortega-Huerta, M. A., Townsend Peterson, A., Phillips, O. L., & Williams, S. E. (2004). Extinction risk from climate change. *Nature*, 427(6970), 145–148. <https://doi.org/10.1038/nature02121>
- Thorne, J. H., Seo, C., Basabose, A., Gray, M., Belfiore, N. M., & Hijmans, R. J. (2013). Alternative biological assumptions strongly influence models of climate change effects on mountain gorillas. *Ecosphere*, 4(9), art108. <https://doi.org/10.1890/ES13-00123.1>
- Thuiller, W. (2004). Patterns and uncertainties of species' range shifts under climate change. *Global Change Biology*, 10(12), 2020–2027. <https://doi.org/10.1111/j.1365-2486.2004.00859.x>
- Thuiller, W., Georges, D., & Engler, R. (2016). *Biomod2: Ensemble platform for species distribution modeling*. R Packag. version 3.3- 13/r726, <https://r-forge.r-project.org/projects/biomod/>
- Thuiller, W., Guéguen, M., Renaud, J., Karger, D. N., & Zimmermann, N. E. (2019). Uncertainty in ensembles of global biodiversity scenarios. *Nature Communications*, 10(1), 1446. <https://doi.org/10.1038/s41467-019-09519-w>
- Thuiller, W., Lafourcade, B., Engler, R., & Araújo, M. B. (2009). BIOMOD - A platform for ensemble forecasting of species distributions. *Ecography*, 32(3), 369–373. <https://doi.org/10.1111/j.1600-0587.2008.05742.x>
- Tranquilli, S., Abedi-Lartey, M., Abernethy, K., Amsini, F., Asamoah, A., Balangtaa, C., Blake, S., Bouanga, E., Breuer, T., Brncic, T. M., Campbell, G., Chancellor, R., Chapman, C. A., Davenport, T. R. B., Dunn, A., Dupain, J., Ekobo, A., Eno-Nku, M., Etoga, G., ... Sommer, V. (2014). Protected areas in tropical Africa: Assessing threats and conservation activities. *PLoS ONE*, 9(12), e114154. <https://doi.org/10.1371/journal.pone.0114154>
- Tranquilli, S., Abedi-Lartey, M., Amsini, F., Arranz, L., Asamoah, A., Babafemi, O., Barakabuye, N., Campbell, G., Chancellor, R., Davenport, T. R. B., Dunn, A., Dupain, J., Ellis, C., Etoga, G., Furuichi, T., Gatti, S., Ghiurghi, A., Greengrass, E., Hashimoto, C., ... Kuehl, H. (2012). Lack of conservation effort rapidly increases African great ape extinction risk. *Conservation Letters*, 5(1), 48–55. <https://doi.org/10.1111/j.1755-263X.2011.00211.x>
- Varela, S., Anderson, R. P., García-Valdés, R., & Fernández-González, F. (2014). Environmental filters reduce the effects of sampling bias and improve predictions of ecological niche models. *Ecography*, 37(11), 1084–1091. <https://doi.org/10.1111/j.1600-0587.2013.00441.x>

- Walsh, P. D., Abernethy, K. A., Bermejo, M., Beyers, R., De Wachter, P., Akou, M. E., Huijbregts, B., Mambounga, D. I., Toham, A. K., Kilbourn, A. M., Lahm, S. A., Latour, S., Maisels, F., Mbina, C., Mihindou, Y., Ndong Obiang, S., Effa, E. N., Starkey, M. P., Telfer, P., ... Wilkie, D. S. (2003). Catastrophic ape decline in western equatorial Africa. *Nature*, 422(6932), 611–614. <https://doi.org/10.1038/nature01566>
- Wenger, S. J., & Olden, J. D. (2012). Assessing transferability of ecological models: An underappreciated aspect of statistical validation. *Methods in Ecology and Evolution*, 3(2), 260–267. <https://doi.org/10.1111/j.2041-210X.2011.00170.x>
- Wessling, E. G., Deschner, T., Mundry, R., Pruetz, J. D., Wittig, R. M., & Köhl, H. S. (2018). Seasonal variation in physiology challenges the notion of chimpanzees (*Pan troglodytes verus*) as a forest-adapted species. *Frontiers in Ecology and Evolution*, 6, 60. <https://doi.org/10.3389/fevo.2018.00060>
- Wich, S. A., Garcia-Ulloa, J., Kuehl, H. S., Humle, T., Lee, J. S. H., & Koh, L. P. (2014). Will oil palm's homecoming spell doom for Africa's great apes? *Current Biology*, 24(14), 1659–1663. <https://doi.org/10.1016/j.cub.2014.05.077>
- Wich, S. A., Garcia-Ulloa, J., Köhl, H. S., Humle, T., Lee, J. S. H., & Koh, L. P. (2014). Will oil palm's homecoming spell doom for Africa's great apes? *Current Biology*, 24(14), 1659–1663. <https://doi.org/10.1016/j.cub.2014.05.077>
- Wich, S. A., Singleton, I., Nowak, M. G., Atmoko, S. S. U., Nisam, G., Arif, S. M., & Kuehl, H. S. (2016). Land-cover changes predict steep declines for the Sumatran orangutan (*Pongo abelii*). *Science Advances*, 2(3):e1500789. <https://doi.org/10.1126/sciadv.1500789>

BIOSKETCH

Joana Carvalho is a postdoctoral researcher in the Faculty of Science, Liverpool John Moores University, UK, who has been working in the field of primate ecology and conservation. Her research focuses on evaluating effects of future climate change and land use/cover change on primates, through species distribution modelling, scenario analyses and landscape connectivity analyses. Additionally, she has been working on density/distribution surface models for Tanzania chimpanzees.

SUPPORTING INFORMATION

Additional supporting information may be found online in the Supporting Information section.

How to cite this article: Carvalho JS, Graham B, Bocksberger G, et al. Predicting range shifts of African apes under global change scenarios. *Divers Distrib*. 2021;00:1–17. <https://doi.org/10.1111/ddi.13358>