

Pieroni, M, Olier-Caparroso, I, Ortega Martorell, S, Johnston, B and Welters, I

In-hospital mortality of sepsis differs depending on the origin of infection: an investigation of predisposing factors

<https://researchonline.ljmu.ac.uk/id/eprint/17133/>

Article

Citation (please note it is advisable to refer to the publisher's version if you intend to cite from this work)

**Pieroni, M, Olier-Caparroso, I, Ortega Martorell, S ORCID logoORCID:
<https://orcid.org/0000-0001-9927-3209>, Johnston, B and Welters, I (2022) In-hospital mortality of sepsis differs depending on the origin of infection: an investigation of predisposing factors. *Frontiers in Medicine - Intensive care***

LJMU has developed [LJMU Research Online](#) for users to access the research output of the University more effectively. Copyright © and Moral Rights for the papers on this site are retained by the individual authors and/or other copyright owners. Users may download and/or print one copy of any article(s) in LJMU Research Online to facilitate their private study or for non-commercial research. You may not engage in further distribution of the material or use it for any profit-making activities or any commercial gain.

The version presented here may differ from the published version or from the version of the record. Please see the repository URL above for details on accessing the published version and note that access may require a subscription.

For more information please contact researchonline@ljmu.ac.uk



In-Hospital Mortality of Sepsis Differs Depending on the Origin of Infection: An Investigation of Predisposing Factors

Mark Pieroni^{1,2}, Ivan Olier^{1,2*}, Sandra Ortega-Martorell^{1,2}, Brian W. Johnston^{2,3,4} and Ingeborg D. Welters^{2,3,4*}

¹ School of Computer Science and Mathematics, Liverpool John Moores University, Liverpool, United Kingdom, ² Liverpool Centre for Cardiovascular Science, Liverpool, United Kingdom, ³ Institute of Life Course and Medical Sciences, University of Liverpool, Liverpool, United Kingdom, ⁴ Liverpool University Hospitals National Health Service (NHS) Foundation Trust, Liverpool, United Kingdom

OPEN ACCESS

Edited by:

Stefano Busani,
University Hospital of Modena, Italy

Reviewed by:

Pan Shangwen,
Huazhong University of Science
and Technology, China
Pauline Yeung Ng,
The University of Hong Kong,
Hong Kong SAR, China

*Correspondence:

Ivan Olier
I.A.OlierCaparroso@ljamu.ac.uk
Ingeborg D. Welters
I.Welters@liverpool.ac.uk

Specialty section:

This article was submitted to
Intensive Care Medicine
and Anesthesiology,
a section of the journal
Frontiers in Medicine

Received: 07 April 2022

Accepted: 20 June 2022

Published: 13 July 2022

Citation:

Pieroni M, Olier I,
Ortega-Martorell S, Johnston BW and
Welters ID (2022) In-Hospital Mortality
of Sepsis Differs Depending on
the Origin of Infection: An
Investigation of Predisposing Factors.
Front. Med. 9:915224.
doi: 10.3389/fmed.2022.915224

Sepsis is a heterogeneous syndrome characterized by a variety of clinical features. Analysis of large clinical datasets may serve to define groups of sepsis with different risks of adverse outcomes. Clinical experience supports the concept that prognosis, treatment, severity, and time course of sepsis vary depending on the source of infection. We analyzed a large publicly available database to test this hypothesis. In addition, we developed prognostic models for the three main types of sepsis: pulmonary, urinary, and abdominal sepsis. We used logistic regression using routinely available clinical data for mortality prediction in each of these groups. The data was extracted from the eICU collaborative research database, a multi-center intensive care unit with over 200,000 admissions. Sepsis cohorts were defined using admission diagnosis codes. We used univariate and multivariate analyses to establish factors relevant for outcome prediction in all three cohorts of sepsis (pulmonary, urinary and abdominal). For logistic regression, input variables were automatically selected using a sequential forward search algorithm over 10 dataset instances. Receiver operator characteristics were generated for each model and compared with established prognostication tools (APACHE IV and SOFA). A total of 3,958 sepsis admissions were included in the analysis. Sepsis in-hospital mortality differed depending on the cause of infection: abdominal 18.93%, pulmonary 19.27%, and renal 12.81%. Higher average heart rate was associated with increased mortality risk. Increased average Mean Arterial Pressure (MAP) showed a reduced mortality risk across all sepsis groups. Results from the LR models found significant factors that were relevant for specific sepsis groups. Our models outperformed APACHE IV and SOFA scores with AUC between 0.63 and 0.74. Predictive power decreased over time, with the best results achieved for data extracted for the first 24 h of admission. Mortality varied significantly between the three sepsis groups. We also demonstrate that factors of importance show considerable heterogeneity depending on the source of infection. The factors influencing in-hospital mortality vary depending on the source

of sepsis which may explain why most sepsis trials have failed to identify an effective treatment. The source of infection should be considered when considering mortality risk. Planning of sepsis treatment trials may benefit from risk stratification based on the source of infection.

Keywords: sepsis, intensive care medicine, mortality risk, prognostic factors, origin of infection, logistic regression

INTRODUCTION

Sepsis is defined as life-threatening organ dysfunction caused by a dysregulated host response to infection (1). It is not a uniform disease, but a complex syndrome of physiologic and biochemical abnormalities. Clinical experience supports the concept that prognosis, treatment, severity and time course vary depending on the source of infection (2, 3). Consequently, attempts have been made to characterize different types of sepsis based on clinical data, routine blood results and biomarkers (4). Mortality of sepsis ranges from 15% in patients with sepsis without shock to 56% in patients with sepsis with shock (5). However, mortality prediction for sepsis remains satisfactory at best (4).

Although numerous trials have been designed to explore treatment options for sepsis, so far, none of these has resulted in new therapies (6). A major shortcoming of many of these multi-center randomized clinical trials is the patient cohort investigated. Patients with sepsis manifest striking heterogeneity, not only with respect to the site or microbiology of the inciting infection but also with respect to the comorbid conditions present in the patient at the time of onset (7). Comorbidities, site of infection and pathogen factors impact the mortality attributed to sepsis. However, in most clinical trials differentiation between groups of sepsis is lacking and may have contributed to the negative outcome of these studies. Recently, attempts have been made to discriminate sub-phenotypes of sepsis based on panels of immunological markers. Although promising, these clinical phenotypes for sepsis (4) are complex, rely on measurement of biomarker profiles, and are thus not easy to implement into routine clinical applications.

Electronic health records are now commonly used to record all routine clinical data. This allows the construction of large databases, which not only structure and aggregate clinical data but also record outcome measures such as mortality, length of stay, and duration of ventilation. Alongside with routinely applied scoring systems such as the Acute Physiology and Chronic Health Evaluation (APACHE), the Sequential Organ Failure Assessment (SOFA), or the Simplified Acute Physiology Score (SAPS), novel outcome prediction models are being developed based on these large patient populations.

In this research, we investigate in-hospital mortality and predictors thereof in different cohorts of sepsis based on the origin of infection using data from the eICU Collaborative Research Database, a freely available multi-center database for critical care research (8). We hypothesize that mortality and factors influencing mortality risk differ between pulmonary, urinary, and abdominal sepsis as the three most relevant clinical presentations. We aim to identify unifying and distinct features

in these groups. Comparisons will be made with established outcome prediction scores such as APACHE IV and SOFA to determine if more sophisticated models show superior performance in predicting hospital mortality in these different groups of septic patients.

MATERIALS AND METHODS

Data Source

In this study, we used the eICU Collaborative Research Database (eICU) (8). The eICU is a multi-center intensive care unit (ICU) database with highly granular data for over 200,000 ICU admissions collected *via* eICU programs across the United States (US) (8). The eICU (V2.0) database comprises 200,859 ICU encounters for 139,369 unique patients admitted to hospitals between 2014 and 2015 to one of the 335 intensive care units across 208 hospitals in the US. All tables are deidentified to meet the safe harbor provisions of the US Health Insurance Portability and Accountability Act (HIPAA). This includes the removal of all protected health information and the assignment of random unique identifiers. The database includes demographic/hospital level records, vital signs and laboratory measurements, medications, APACHE components, care plan documentation, severity illness measures, diagnosis information, and treatment details.

Data Extraction

We extracted data from the medical ICUs (MICU), surgical ICUs (SICU), and medical-surgical ICUs (Med-Surg ICU). Specialist critical care units such as cardiothoracic and cardio-surgical ICUs were excluded because of their specific patient cohorts with distinct presentations of sepsis. Patients after elective surgery and those with an underlying hematology diagnosis were also excluded, as their clinical presentation and course are distinct from patients with sepsis as the primary diagnosis. We then used the admission diagnosis codes, which are coded using the APACHE IV diagnosis system, to extract the admissions related to sepsis, and excluded patients < 18 years of age and with an ICU stay < 72 h. Lastly, all records with more than 35% missing data were excluded. These inclusion and exclusion criteria are represented in **Figure 1**.

We collected all electronic health record data from the acute phase of the ICU admission, defined as the first 72 h after admission. From this dataset, we excluded the first 6 h (resuscitation phase), where the priority is to stabilize the patient. Previous studies have used data from different time windows for outcome prediction, e.g., the first 24 h of the ICU admission (9).

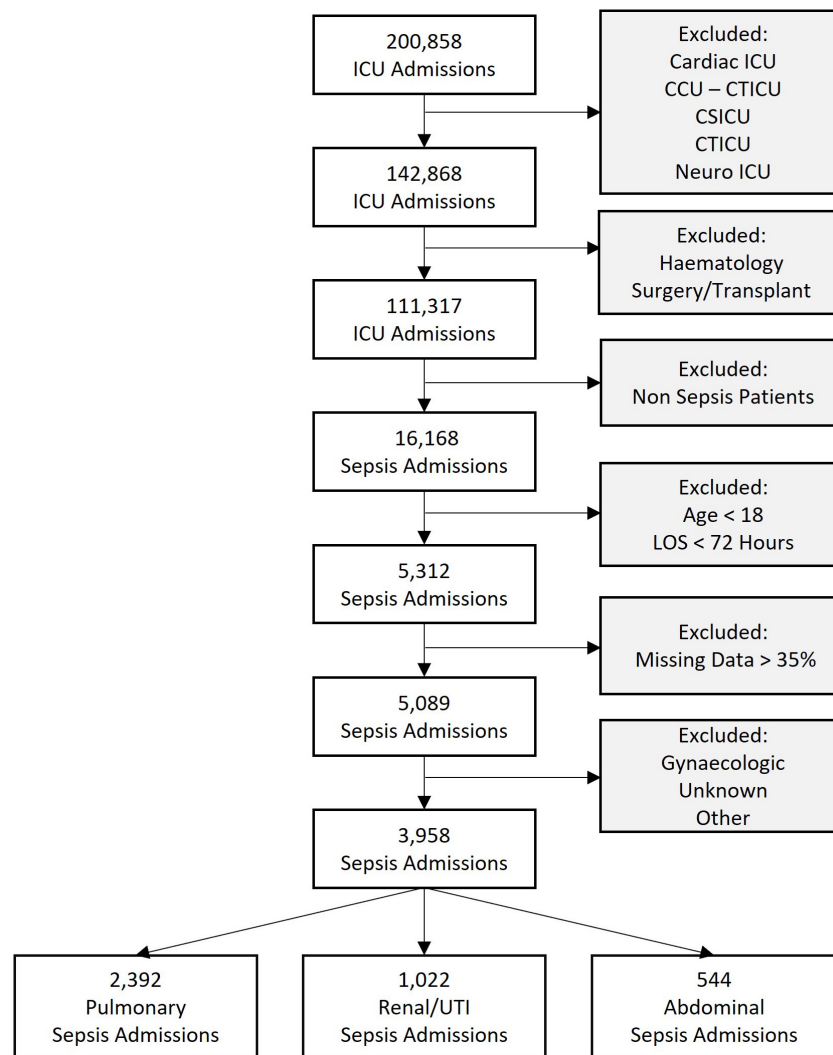


FIGURE 1 | Flowchart of sepsis cohorts analyzed showing the inclusion and exclusion criteria. ICU, intensive care unit; CCU-CTICU, critical care unit-cardiothoracic intensive care unit, CSICU, cardio-surgical intensive care unit; LOS, length of stay; UTI, urinary tract infection.

All dynamic features were organized into 1-h non-overlapping time series bins when extracting the data from the eICU database. This was to accommodate for different sampling frequencies of available data and the balance between missing data points and bin size. All time-varying variables were converted into tabular representations by extracting their means and standard deviations. The mean value of these time-varying variables, which represents the average of each time series, was named “Average” (Avg), e.g., the mean of the heart rate signal was coded as “Avg Heart Rate.” Similarly, the standard deviation, which is representing the variation in the time series, was coded as “Variations” (Var), e.g., Heart Rate Var.

Outcome

The primary outcome was In-Hospital Mortality, which was coded as a binary variable to indicate whether the patient was dead (“1”) or alive (“0”).

Study Aim

The aims of this study were (1). to define in-hospital mortality depending on the origin of infection and (2). To investigate predictors of in-hospital mortality for each of the most common types of sepsis: abdominal, urinary and chest sepsis.

Definition of Sepsis Types

A cohort of patients with sepsis was extracted based upon the ICU admission diagnosis, which is coded using the APACHE IV diagnosis system (10) routinely recorded in the eICU database. From here, the following septic groups were identified: pulmonary, abdominal, and renal/urinary tract infection (UTI). Other smaller cohorts of septic patient groups were excluded either because of a lack of clarity regarding their clinical source (e.g., those encoded as “unknown” or “others”) or because of their considerably smaller number of cases (e.g., gynaecologic sepsis with less than 20 admissions). The prevalence in these groups was

also reviewed against the encoded ICD codes for these patients to ensure that the relevant cohorts were well defined.

Univariate Analysis

We used non-parametric statistical tests for continuous and categorical variables for univariate analysis of the three main groups of sepsis. The univariate analysis aims to compare variable distributions for significant differences amongst the sepsis groups. The Kruskal-Wallis test was applied to assess the differences among the sepsis groups for all continuous variables. Similarly, Pearson's Chi-Square was used to assess differences for all categorical variables. P -values < 0.05 were considered statistically significant.

Multiple Logistic Regression

Multiple logistic regression (LR) was used throughout the experiments. LR models the outcome probability or risk to be "1" (positive class) as $P(Y = 1) = 1 / (1 + \exp[-\sum_{k=0}^K \beta_k X_k])$, where $\{\beta_0, \dots, \beta_K\}$ are the model coefficients which are estimated by maximum likelihood (11). The LR coefficients are the logarithm odds ratios (OR) between the factors and the outcome. If a factor increased by one unit, its coefficient measures how much the outcome odd would increase or decrease, depending on whether the coefficient is positive or negative.

Variable Selection and Cross-Validation

For LR, input variables were automatically selected using a sequential forward search algorithm over 10 dataset instances (10-fold cross-validation). For each iteration, an inner cycle of fivefold cross-validation was used to select relevant variables. Collectively this is referred to as nested cross-validation (Supplementary Figure 1). The selection algorithm starts with a baseline model (i.e., all coefficients but the intercept set to zero, $\beta_{k \neq 0} = 0$), and in each step, the variable which most improves the performance on the validation set is added (12).

Model Performance

Model performance was measured using the area under the receiver operator characteristic (AUC) curve. AUC means and confidence intervals (CI) were calculated for each sepsis type.

Model Explainability

To provide model explainability, we developed a forest plot for each sepsis type and a Sankey network diagram. The forest plots display the ORs and CIs associated with each clinical feature relevant to the developed LR models. The Sankey network diagram was used in a novel way to visualize the interactions between the significant clinical features and sepsis groups. For this, we selected the significant variables ($P < 0.05$) from the LR models (nodes on the left-hand side of the diagram) and generated links between them and the sepsis groups (nodes on the right-hand side of the diagram). Additionally, the absolute value of the OR interactions between clinical features and sepsis groups was represented by the height of the nodes, to provide further information regarding the relevance of each clinical feature.

Comparisons of the Novel Models Against Established Critical Care Deterioration Scores

We compared the performance of two commonly used clinical scoring systems, the APACHE IV and SOFA score, which are typically used to predict in-hospital mortality for patients in critical care. We used the SOFA and APACHE IV scores as independent variables in a univariate LR model to produce the mortality risk estimate for the outcome. The purpose was to allow for a fair comparison between the developed models and the scores using the same methodology to evaluate how well each of them can predict the outcome.

The APACHE IV and SOFA scores are readily available in the eICU database. The APACHE IV scores were calculated based upon data collected on admission to the ICU, these values were available and listed in the eICU table "apachePatientResults." Individual components of the SOFA score were calculated (13) for the first 3 days and then averaged. qSOFA scores were calculated by assigning points for (1). altered mental state (< 15 in the Glasgow Coma Scale), (2). Fast respiratory rate (> 22 breaths per minute) 3. Low blood pressure (systolic blood pressure < 100 mmHg).

RESULTS

Sepsis Groups

A total of 3,958 ICU admissions were analyzed. A total of 2,393 patients were admitted with pulmonary sepsis, 1,044 with urinary sepsis and 544 with abdominal sepsis (Figure 1). Unadjusted statistical comparisons between the three sepsis groups are displayed in Table 1. Patients with urinary sepsis were older than patients with pulmonary and abdominal sepsis.

With the exception of hypertension, there were no significant differences in cardiovascular comorbidities between the groups. We found group differences that were statistically significant (p -value < 0.05) for comorbidities such as mild and severe liver disease, dementia and respiratory diseases (COPD, asthma). We also observed significant group differences in vital signs (average heart rate, average mean arterial pressure (MAP), average saturation, average respiratory rate and average temperature) and blood counts (average lymphocyte count, average white blood cell count, average platelet count, and hematocrit). Blood gas results differed between groups with regards to average pH, average pO_2 and average pCO_2 . Liver and kidney function was also significantly different between groups. Compared to patients with pulmonary or abdominal sepsis, a smaller proportion of patients with urinary sepsis required inotropes during their stay.

While there was a significant difference between SOFA and qSOFA scores between the groups, Charlson comorbidity index and APACHE IV score were comparable between abdominal, urinary and pulmonary sepsis.

Evaluation of Model Performances

Figure 2 displays the results of the comparison between the developed multivariate models and the APACHE IV and SOFA

scores. These AUC results show that, for pulmonary and abdominal sepsis, the novel models outperformed APACHE IV and SOFA scores (AUC 0.74 and 0.71, respectively), but were not superior in urinary sepsis (AUC 0.63).

Comparisons using different time windows for data extraction was performed to assess (a) how this decision impacts model performances, and (b) how our analysis compares to previous

studies. **Figure 3** compiles the results obtained for the first 24, 48, and 72 h, with or without the inclusion of the first 6 h. The best results were obtained when using the first 24 h, where the cohort sizes were generally twice the size of those at 72 h (see the bottom of **Figure 3**), as a great proportion of patients either died or were discharged between 24 and 72 h after ICU admission.

TABLE 1 | Demographics, comorbidities, vital signs, and routine prognostic scores used for modeling.

	Abdominal (N = 544)	Pulmonary (N = 2,392)	Renal/UTI (N = 1,022)	P-value
Outcome				
In-hospital mortality	103 (18.9%)	461 (19.3%)	131 (12.8%)	<0.001
Demographics				
Age	67.0 (56.0, 76.0)	67.0 (56.0, 77.0)	71.0 (60.0, 81.0)	<0.001
Gender (Male)	276 (50.7%)	1,281 (53.6%)	437 (42.8%)	<0.001
Comorbidities				
Myocardial infarction	45 (8.3%)	184 (7.7%)	85 (8.3%)	0.7862
CHF	85 (15.6%)	461 (19.3%)	204 (20.0%)	0.0932
PVD	27 (5.0%)	116 (4.8%)	53 (5.2%)	0.9172
Dementia	14 (2.6%)	166 (6.9%)	104 (10.2%)	<0.001
COPD	81 (14.9%)	600 (25.1%)	136 (13.3%)	<0.001
CTD	16 (2.9%)	70 (2.9%)	35 (3.4%)	0.7302
Peptic ulcer disease	14 (2.6%)	75 (3.1%)	35 (3.4%)	0.6552
Mild liver disease	31 (5.7%)	55 (2.3%)	26 (2.5%)	<0.001
Uncomplicated DM	146 (26.8%)	713 (29.8%)	407 (39.8%)	<0.001
Renal disease	94 (17.3%)	334 (14.0%)	165 (16.1%)	0.0712
Hemiplegia	45 (8.3%)	246 (10.3%)	146 (14.3%)	<0.001
Severe liver disease	32 (5.9%)	49 (2.0%)	18 (1.8%)	<0.001
Hypertension	269 (49.4%)	1,143 (47.8%)	564 (55.2%)	<0.001
Hypothyroidism	16 (2.9%)	100 (4.2%)	43 (4.2%)	0.3882
Atrial fibrillation	70 (12.9%)	307 (12.8%)	144 (14.1%)	0.5962
Asthma	38 (7.0%)	219 (9.2%)	70 (6.8%)	0.0412
Seizures	32 (5.9%)	166 (6.9%)	83 (8.1%)	0.2312
Respiratory failure	10 (1.8%)	126 (5.3%)	46 (4.5%)	0.0032
CABG	25 (4.6%)	139 (5.8%)	46 (4.5%)	0.2142
Cancer	116 (21.3%)	422 (17.6%)	169 (16.5%)	0.0572
Admission diagnosis				
Pulmonary	181 (33.3%)	2,109 (88.2%)	350 (34.2%)	<0.001
Cardiovascular	423 (77.8%)	1,788 (74.7%)	787 (77.0%)	0.1852
Infectious diseases	165 (30.3%)	569 (23.8%)	361 (35.3%)	<0.001
Renal	205 (37.7%)	730 (30.5%)	662 (64.8%)	<0.001
Gastrointestinal	323 (59.4%)	211 (8.8%)	91 (8.9%)	<0.001
Oncology	20 (3.7%)	114 (4.8%)	24 (2.3%)	0.0042
Neurologic	85 (15.6%)	443 (18.5%)	270 (26.4%)	<0.001
Endocrine	63 (11.6%)	330 (13.8%)	169 (16.5%)	0.0192
Vitals				
Avg heart rate	94.0 (81.9, 105.0)	90.2 (79.8, 100.8)	89.0 (78.1, 98.7)	<0.001
Heart rate var	9.5 (6.9, 12.6)	10.0 (7.3, 13.5)	9.7 (7.1, 13.4)	0.0201
Avg SaO ₂	96.6 (95.3, 98.2)	96.6 (95.1, 98.0)	97.1 (95.9, 98.5)	<0.001
SaO ₂ var	1.9 (1.4, 2.5)	2.1 (1.6, 2.7)	1.8 (1.3, 2.5)	<0.001
Avg GCS total	13.8 (10.5, 14.9)	11.3 (9.0, 14.3)	13.6 (10.0, 14.8)	<0.001
GCS total var	0.7 (0.2, 1.7)	0.9 (0.4, 1.9)	0.6 (0.3, 1.5)	<0.001
Avg respiratory rate	20.5 (18.0, 23.9)	21.4 (18.6, 24.8)	20.1 (17.6, 23.3)	<0.001
Respiratory rate var	3.8 (2.9, 5.0)	4.0 (2.9, 5.2)	3.7 (2.9, 4.9)	0.0171

(Continued)

TABLE 1 | (Continued)

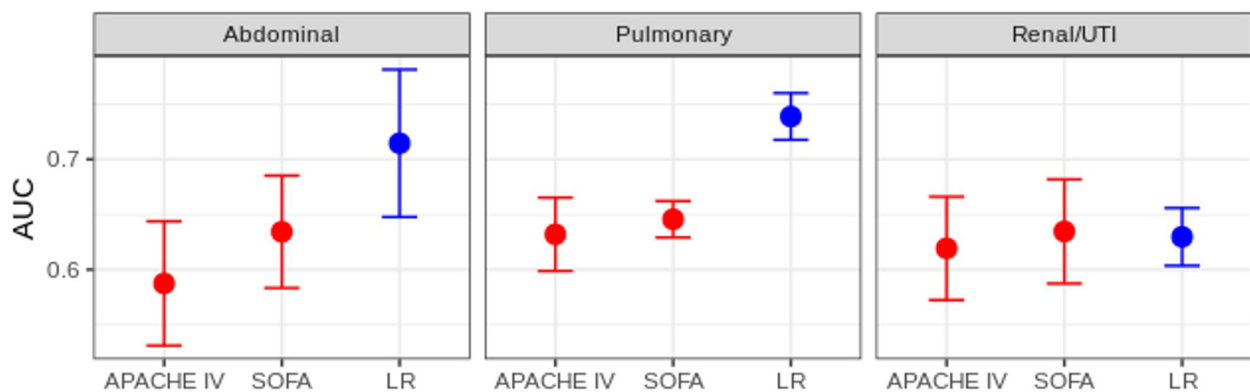
	Abdominal (N = 544)	Pulmonary (N = 2,392)	Renal/UTI (N = 1,022)	P-value
Vitals				
Avg temperature °C	36.8 (36.6, 37.2)	36.9 (36.6, 37.2)	36.8 (36.6, 37.2)	0.0431
Temperature °C var	0.4 (0.3, 0.6)	0.4 (0.3, 0.6)	0.4 (0.3, 0.6)	0.0411
Avg MAP	76.8 (72.4, 84.3)	80.1 (74.4, 87.6)	78.6 (73.2, 86.4)	<0.001
MAP var	9.1 (7.3, 11.6)	9.6 (7.5, 12.1)	9.9 (7.9, 12.5)	<0.001
Avg WBC	13.5 (9.3, 19.1)	12.2 (8.6, 16.9)	12.6 (8.7, 18.0)	<0.001
WBC var	2.5 (1.3, 4.5)	2.0 (1.1, 3.6)	2.3 (1.1, 4.2)	<0.001
Avg albumin	2.3 (1.9, 2.6)	2.3 (2.0, 2.7)	2.3 (2.0, 2.7)	0.0161
Albumin var	0.2 (0.1, 0.3)	0.1 (0.1, 0.3)	0.1 (0.1, 0.2)	0.0041
Avg platelets	163.8 (100.7, 239.8)	180.0 (124.0, 249.0)	164.6 (106.0, 230.8)	<0.001
Platelets var	21.2 (12.0, 37.1)	18.6 (9.2, 31.8)	17.7 (9.2, 29.8)	0.0071
Avg PaO ₂	92.4 (75.9, 115.4)	91.0 (75.8, 113.1)	97.0 (79.4, 120.0)	0.0181
PaO ₂ var	20.6 (11.2, 43.4)	20.6 (11.1, 37.8)	19.3 (9.2, 34.3)	0.3321
Avg PaCO ₂	36.3 (31.6, 42.0)	39.3 (34.0, 46.3)	35.8 (30.2, 41.2)	<0.001
PaCO ₂ var	4.1 (2.6, 6.4)	4.0 (2.2, 7.1)	3.5 (2.1, 5.8)	0.0821
Avg FiO ₂	43.0 (35.0, 60.0)	50.0 (40.0, 70.0)	40.0 (33.3, 53.6)	<0.001
FiO ₂ Var	7.5 (0.0, 17.9)	9.5 (3.5, 18.3)	7.1 (0.7, 15.2)	0.1121
Avg total bilirubin	0.9 (0.5, 2.3)	0.6 (0.4, 1.0)	0.6 (0.4, 1.2)	<0.001
Total bilirubin var	0.2 (0.1, 0.5)	0.1 (0.1, 0.3)	0.1 (0.1, 0.3)	<0.001
Avg creatinine	1.4 (0.9, 2.6)	1.0 (0.7, 1.8)	1.4 (0.9, 2.3)	<0.001
Creatinine var	0.2 (0.1, 0.4)	0.1 (0.1, 0.3)	0.2 (0.1, 0.4)	<0.001
Avg BUN	29.6 (17.7, 49.8)	25.5 (16.0, 41.0)	31.0 (18.3, 48.9)	<0.001
BUN var	4.8 (2.4, 8.8)	4.0 (2.1, 7.3)	4.2 (2.1, 8.6)	<0.001
Avg PH	7.4 (7.3, 7.4)	7.4 (7.3, 7.4)	7.4 (7.3, 7.4)	<0.001
pH Var	0.0 (0.0, 0.1)	0.0 (0.0, 0.1)	0.0 (0.0, 0.1)	0.0681
Avg sodium	139.0 (136.0, 142.7)	139.8 (136.7, 143.0)	140.0 (136.9, 144.0)	<0.001
Sodium var	1.8 (1.2, 3.1)	1.9 (1.2, 2.8)	2.1 (1.3, 3.1)	0.0171
Avg glucose	130.8 (110.0, 161.5)	141.0 (114.6, 170.6)	139.2 (115.8, 170.5)	<0.001
Glucose var	24.7 (15.3, 37.7)	26.8 (17.1, 41.4)	29.8 (19.5, 45.8)	<0.001
Avg hematocrit	28.9 (25.6, 32.8)	29.9 (26.5, 34.0)	29.5 (26.5, 33.3)	<0.001
Hematocrit var	2.1 (1.2, 3.1)	1.6 (0.9, 2.6)	1.5 (0.9, 2.5)	<0.001
Avg urine	161.1 (68.8, 364.1)	226.2 (96.3, 475.0)	224.2 (91.4, 551.0)	<0.001
Urine var	70.6 (33.3, 158.9)	108.9 (54.5, 208.9)	106.1 (50.3, 226.3)	<0.001
Respiration				
Intubated	289 (53.1%)	1,914 (80.0%)	486 (47.6%)	<0.001
Drugs				
Norepinephrine	241 (44.3%)	861 (36.0%)	436 (42.7%)	<0.001
Vasopressin	80 (14.7%)	225 (9.4%)	111 (10.9%)	0.0012
Phenylephrine	56 (10.3%)	147 (6.1%)	60 (5.9%)	0.0012
Dopamine	18 (3.3%)	60 (2.5%)	44 (4.3%)	0.0202
Epinephrine	15 (2.8%)	36 (1.5%)	15 (1.5%)	0.1022
Dobutamine	16 (2.9%)	43 (1.8%)	24 (2.3%)	0.1972
Scores				
Charlson CI	2.0 (0.0, 3.0)	2.0 (0.0, 3.0)	2.0 (1.0, 3.0)	0.4031
SOFA	4.0 (1.0, 7.0)	4.0 (2.0, 7.0)	3.0 (1.0, 6.0)	<0.001
APACHE IV	73.0 (61.0, 88.0)	73.0 (58.0, 89.0)	73.0 (62.0, 87.0)	0.8951
SIRS	2.0 (1.0, 2.0)	2.0 (1.0, 2.0)	1.0 (1.0, 2.0)	<0.001
qSOFA	1.0 (1.0, 2.0)	1.0 (1.0, 2.0)	1.0 (1.0, 2.0)	<0.001
Unit stay type				
Admit	453 (83.3%)	1,991 (83.2%)	863 (84.4%)	<0.001
Other/Stepdown/Transfer	67 (12.3%)	277 (11.6%)	138 (13.5%)	
Readmit	24 (4.4%)	124 (5.2%)	21 (2.1%)	

(Continued)

TABLE 1 | (Continued)

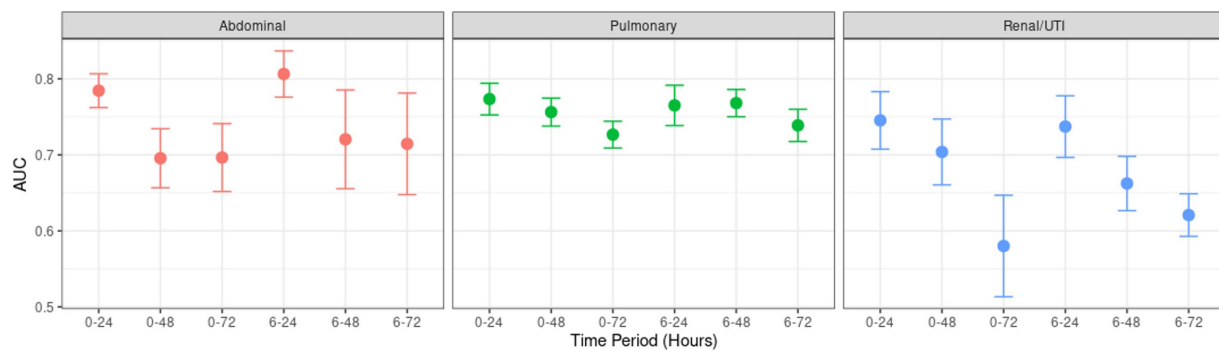
	Abdominal (N = 544)	Pulmonary (N = 2,392)	Renal/UTI (N = 1,022)	P-value
Unit type				<0.001
Med-surg ICU	386 (71.0%)	1,830 (76.5%)	785 (76.8%)	
MICU	104 (19.1%)	440 (18.4%)	197 (19.3%)	
SICU	54 (9.9%)	122 (5.1%)	40 (3.9%)	
Admission duration				
Hospital LOS	287.3 (190.7, 470.7)	264.4 (172.7, 400.2)	222.7 (159.6, 343.7)	<0.001
ICU LOS	125.9 (92.1, 209.0)	140.7 (97.7, 228.8)	112.1 (87.5, 159.3)	<0.001

The first column displays the data characteristics (variables). Columns second to fourth show summary statistics of all the variables for each sepsis group. Sepsis group cohort sizes are reported under the group name. Numeric variables are reported with the median and IQR (in parentheses), while categorical variables are reported with the frequency and proportion (in parenthesis). The resulting statistical tests are reported in the fifth column in the form of p-values. Any p-value smaller than 0.001 was indicated as " < 0.001 ." CHF, congestive heart failure; PVD, Peripheral vascular disease; COPD, Chronic obstructive pulmonary disease; CTD, Connective tissue diseases; DM, diabetes mellitus; CABG, Coronary artery bypass graft surgery; SaO₂, oxygen saturation; GCS, Glasgow coma scale; MAP, Mean Arterial Pressure; WBC, white blood cells count; PaO₂, partial pressure of oxygen; FiO₂, Fraction of Inspired Oxygen; BUN, blood urea nitrogen; SOFA, Sequential Organ Failure Assessment; qSOFA, quick SOFA; APACHE, Acute Physiology And Chronic Health Evaluation; SIRS, Systemic Inflammatory Response Syndrome; ICU, Intensive Care Unit; Med-Surg ICU, medical-surgical ICU; MICU, medical ICU; SICU, surgical ICU; LOS, length of stay; Avg, average (mean); Var, variation (standard deviation).



Sepsis Type	Algorithms	AUC	Sensitivity	Specificity
Abdominal	APACHE IV	0.59 (0.53-0.64)	0.54 (0.45-0.63)	0.65 (0.60-0.70)
	SOFA	0.63 (0.58-0.69)	0.57 (0.44-0.69)	0.61 (0.56-0.66)
	LR	0.71 (0.65-0.78)	0.54 (0.43-0.65)	0.73 (0.68-0.79)
Pulmonary	APACHE IV	0.63 (0.60-0.67)	0.54 (0.48-0.59)	0.66 (0.64-0.68)
	SOFA	0.65 (0.63-0.66)	0.60 (0.57-0.64)	0.60 (0.59-0.61)
	LR	0.74 (0.72-0.76)	0.65 (0.61-0.70)	0.70 (0.67-0.73)
Renal/UTI	APACHE IV	0.62 (0.57-0.67)	0.53 (0.45-0.61)	0.65 (0.63-0.66)
	SOFA	0.63 (0.59-0.68)	0.54 (0.45-0.63)	0.69 (0.67-0.72)
	LR	0.63 (0.60-0.66)	0.48 (0.41-0.55)	0.70 (0.66-0.73)

FIGURE 2 | Model performance comparisons. (Top) Area under the ROC curve (AUC) for each sepsis group. Average AUC (filled circles) and confidence intervals (vertical bars) estimated after the 10 repetitions of the outer cross-validation. Deterioration scores (APACHE IV and SOFA) models are represented in red, LR models in blue. (Bottom) Detailed comparison, also including sensitivity and specificity. APACHE IV, Acute Physiology And Chronic Health Evaluation IV; SOFA, Sequential Organ Failure Assessment; LR, multiple logistic regression.



Sepsis ● Abdominal ● Pulmonary ● Renal/UTI

Sepsis Type	Time Split	Cohort Size	Discharged	Died	Prevalence	Lost in the first 24h	Discharged	Died	Lost in the first 48h	Discharged	Died
Pulmonary	0-24	4,856	4046 [83%]	810 [17%]	16.7	-	-	-	-	-	-
	0-48	3,442	2833 [82%]	609 [18%]	17.7	1,414	1213 [86%]	201 [14%]	-	-	-
	0-72	2,414	1948 [81%]	466 [19%]	19.3	-	-	-	2,442	2098 [86%]	344 [14%]
	6-24	4,475	3715 [83%]	760 [17%]	17.0	-	-	-	-	-	-
	6-48	3,393	2790 [82%]	603 [18%]	17.8	1082	925 [85%]	157 [15%]	-	-	-
	6-72	2,392	1931 [81%]	461 [19%]	19.3	-	-	-	2083	1784 [86%]	299 [14%]
Renal	0-24	2,772	2511 [91%]	261 [9%]	9.4	-	-	-	-	-	-
	0-48	1,713	1535 [90%]	178 [10%]	10.4	1059	976 [92%]	83 [8%]	-	-	-
	0-72	1,028	897 [87%]	131 [13%]	12.7	-	-	-	1744	1614 [93%]	130 [7%]
	6-24	2,546	2295 [90%]	251 [10%]	9.9	-	-	-	-	-	-
	6-48	1,692	1514 [89%]	178 [11%]	10.5	854	781 [91%]	73 [9%]	-	-	-
	6-72	1,022	891 [87%]	131 [13%]	12.8	-	-	-	1524	1404 [92%]	120 [8%]
Abdominal	0-24	1,408	1156 [82%]	252 [18%]	17.9	-	-	-	-	-	-
	0-48	884	730 [83%]	154 [17%]	17.4	524	426 [81%]	98 [19%]	-	-	-
	0-72	546	443 [81%]	103 [19%]	18.9	-	-	-	862	713 [83%]	149 [17%]
	6-24	1,344	1101 [82%]	243 [18%]	18.1	-	-	-	-	-	-
	6-48	876	723 [83%]	153 [17%]	17.5	468	378 [81%]	90 [19%]	-	-	-
	6-72	544	441 [81%]	103 [19%]	18.9	-	-	-	800	660 [83%]	140 [17%]

FIGURE 3 | Model performance measures on several time windows. (Top) Model performance comparisons as measured using the AUC for each sepsis group at several time intervals. The figure shows AUC means and confidence intervals estimated after the 10 repetitions of the outer cross-validation with logistic regression. (Bottom) Effects of different time windows on cohort size and mortality rates.

Explanatory Analysis

Figure 4 displays the ORs for risk factors in the three sepsis groups as estimated across the 10 dataset instances. Higher age and higher average heart rate were associated with increased mortality risk. Increased values in average MAP were associated with a reduced mortality risk across all sepsis groups. Our LR models identified significant factors that were relevant only for certain sepsis groups. For instance, atrial fibrillation and cancer were associated with an increased mortality risk only in pulmonary sepsis, but not in urinary or abdominal sepsis. Contrastingly, in abdominal sepsis hypertension represented a relevant risk factor of mortality. Interestingly, abdominal sepsis was the only group for which uncomplicated diabetes represented a significant protective factor regarding mortality risk.

A number of factors were relevant to more than one sepsis group. For instance, the most influential factor for increased mortality risk was “intubation” for urinary and pulmonary sepsis groups, however, in abdominal sepsis “readmitted to ICU” represented the most important factor. A rise in risk was associated with higher “average FiO₂” and “average total bilirubin” values in both abdominal and pulmonary sepsis, but

not in urinary sepsis. Distinctively, in pulmonary and renal sepsis lower average temperature was indicative of reduced mortality risk. The average albumin was associated with the greatest risk reduction in pulmonary sepsis, whereas in renal and abdominal sepsis “average temperature” and “unit stay type (other/stepdown/transfer)” represented important variables.

Moreover, results illustrated that the average value for certain parameters was relevant while for other variables, the average variation played a greater role in mortality risk prediction. For instance, mortality risk reduces in renal sepsis when there is an increase in “average SaO₂.” This is dissimilar to pulmonary sepsis, for which higher “SaO₂ variation” increased the risk of mortality.

Figure 5 presents a Sankey network diagram displaying the relationship between several clinical features and the sepsis groups. It shows that “intubation,” “average total bilirubin,” “average FiO₂,” “average urine output,” “average heart rate” and “average MAP” had the greatest overlap between sepsis groups. In abdominal sepsis, readmission had the greatest influence on the risk of in-hospital mortality compared to any other variables included in the model.

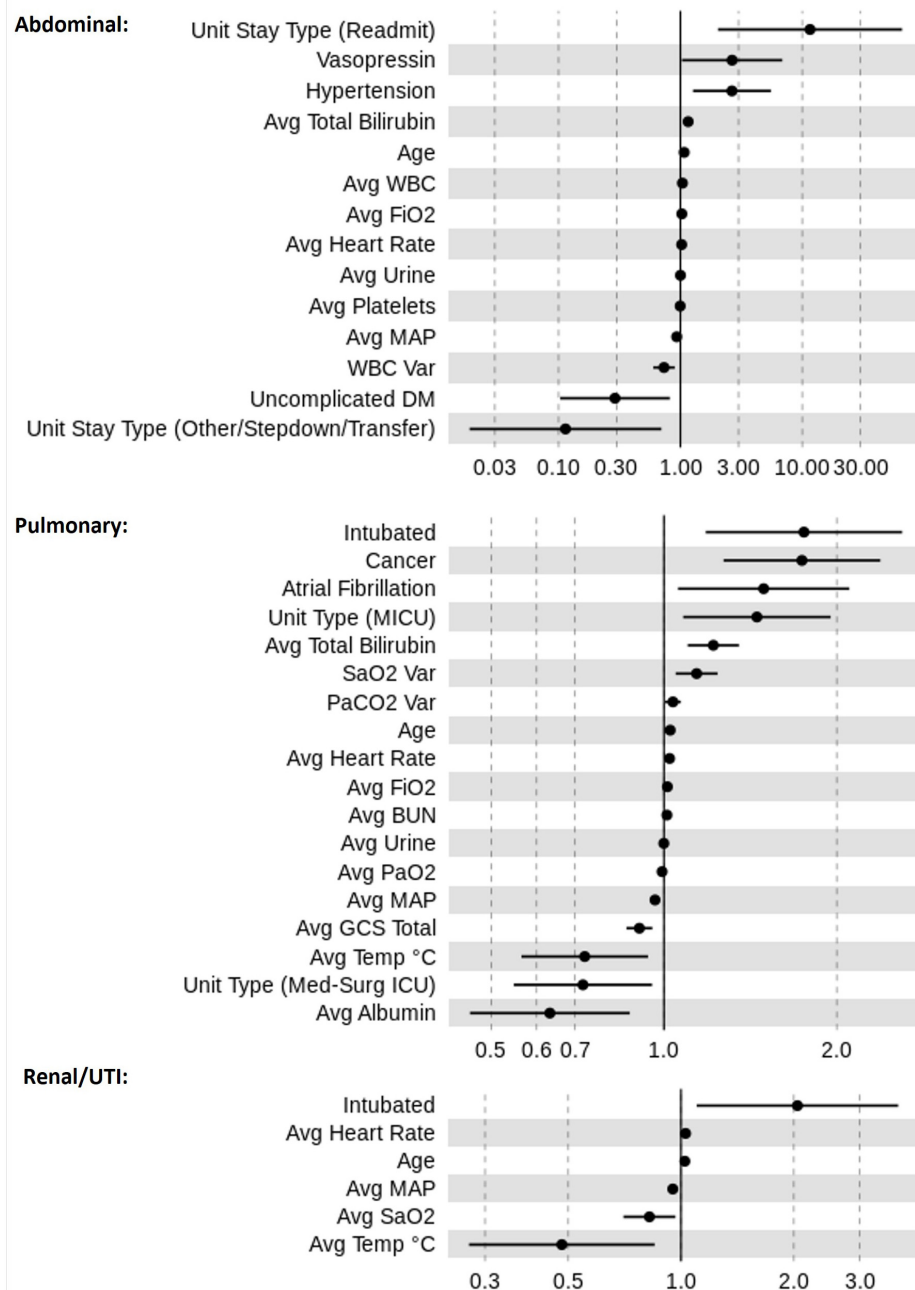


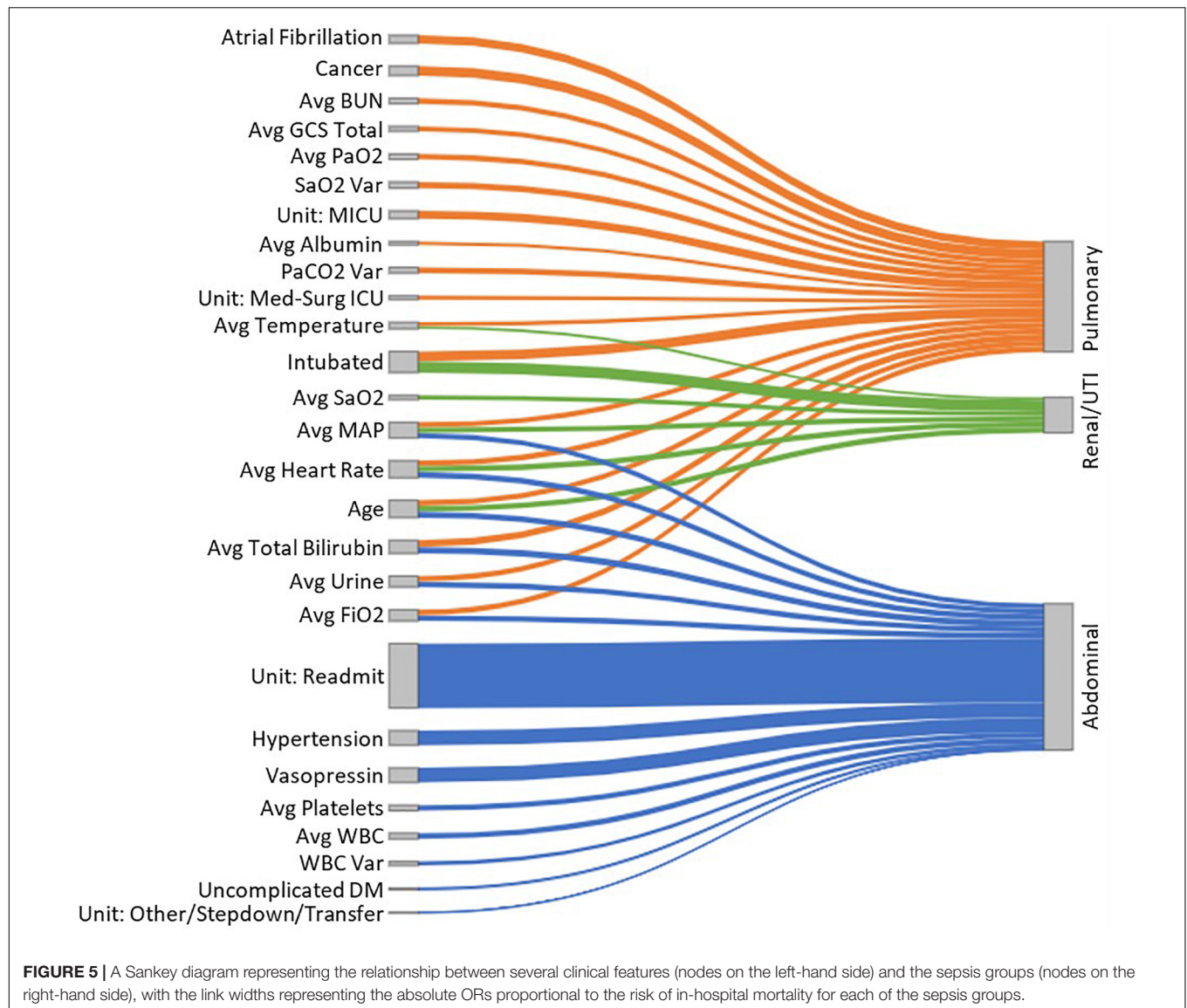
FIGURE 4 | Odds ratio (OR) estimates for LR. The figure displays the pooled ORs average (filled circles) and confidence intervals (vertical bars) for all significant features ($p < 0.05$) selected by the feature selection algorithms for the sepsis groups: pulmonary, abdominal, and renal/UTI. An OR of 1 represents a baseline risk, with values < 1 indicating a reduction in risk for the outcome, and > 1 indicating an increased risk in relation to the outcome.

DISCUSSION

In this study, we conduct a LR analysis of several types of sepsis based on the origin of infection. Our results showed that using LR as a relatively simple approach to ML was sufficient to obtain good to very good models for renal, abdominal and pulmonary sepsis that consistently outperformed the established risk scores for predicting in-hospital mortality. Biomedical and

social scientists are usually familiar with the results provided by LR models, hence their great popularity. The major drawbacks of LR are the linearity and normality assumptions of the data which could yield biased models.

Traditionally, outcome prediction in sepsis is based on clinical scores, such as SOFA, APACHE, or SAPS. Such mortality prediction scores for critically ill patients are used worldwide and have been extensively validated (14). These models, however, may



not be ideal for routine clinical use as they lack granularity and are designed for use at ICU admission, thus neglecting the change of physiological parameters over time. So far, only a limited number of studies describe prognostication for in-hospital mortality in patients with sepsis comparing different sources of infection as an independent factor (15). In this study, we address this knowledge gap by (a) comparing different risk factors for each sepsis type and (b) highlighting specific factors associated with in-hospital mortality in the distinct sepsis groups, depending on the origin of the underlying infection. This approach may help to address the heterogeneity of the patient population with sepsis, to define discrete patient populations to guide the development of effective therapies and identify cohorts that benefit from certain interventions.

A fundamental difference between our models and existing ones for outcome prediction is that we include data from a longer observation period. For frequently measured variables

such as vital signs, up to 72-h' worth of data points were used, with measurements recorded every hour. We extracted the mean and the standard deviation of all data points available to factor in change over time, with the former indicating the average values for each patient, and the latter indicating the range of variation in those values, e.g., a high heart rate variation may be indicative of some form of hemodynamic instability. However, the mean and the standard deviation represent a crude representation of change over time, and further research is required to investigate and define the best mathematical approach to reflect the variation of variables, particularly those with frequent measurement, e.g., heart rate or blood pressure.

We performed outcome prediction at various time points during the early phase of sepsis. Our results demonstrate that the performance of ML models drops over the first 72 h after ICU admission in all the types of sepsis studied. Model performance is

best maintained in pulmonary sepsis, while loss of performance is greatest in urinary sepsis. A possible explanation is that the causes of death from sepsis vary over time. While early deaths occur in about a third of septic patients and are mainly attributable to multiple organ failure caused by the primary infection, late deaths are influenced by end-of-life decisions and often relate to recurrent or late infections (16).

Early deaths in sepsis are typically associated with a hyperinflammatory “cytokine storm” response with fever, refractory shock, acidosis, and hypercatabolism (17). If regulation of the immune response from hyperinflammation to normal activity fails after the acute phase, patients enter a marked immunosuppressive state. Later deaths after the acute phase occur due to an inability to clear primary infections and the development of secondary infections (17). Taken into account the biphasic or even polyphasic course of sepsis, mortality prediction in the acute phase will differ from models predicting later mortality. Hence models that only include admission data are likely to disproportionately focus on early death occurring in the first 24 h of admission. Whilst optimizing data collection periods may improve outcome prediction, the ideal model should reflect dynamic changes and risk profile throughout the Intensive Care admission.

Our results indicate that prediction after the acute phase of sepsis is more complex and not well described in existing prognostication models. In addition, outcome prognostication is often performed early during the ICU stay, and many scores such as APACHE IV, are only validated for use on admission to Critical Care. Generation of a logistic regression model to predict mortality represents the first step in producing a score for wider clinical use; comparison to existing models is required to justify progression to external validation, refinement and eventually development of a new score with different weighting of individual risk factors. The degree of organ failure associated with the type of sepsis and the early progression of disease varies between sepsis groups and may be influenced differently in each group by early deaths and vice versa, early recovery and discharge alive. This assumption is supported by the higher dropout of cases in the urinary sepsis group compared to other sepsis caused by abdominal and chest infections.

Sepsis is not a uniform disease, but a syndrome characterized by the striking variation of biological features (18). Systematic analysis of these features, using data mining, and advanced statistical methods or machine learning, may allow the identification of types of sepsis with different risk profiles and responses to treatment. In an attempt to classify different types of sepsis, several approaches have been chosen (19). More sophisticated definitions of distinct molecular endotypes are based on leukocyte genome-wide expression profiles from samples collected on ICU admission (20–22). However, the implementation of these complex prognostic and predictive strategies at the bedside of patients is limited (23) due to the need for expensive laboratory analysis, which is not routinely available and is often too time-consuming to allow clinical decision making. Different statistical methods, including latent

class analysis (24, 25), group-based trajectory modeling (26) and various machine learning algorithms (27) have been applied to large clinical data sets.

Clinicians instantaneously recognize that bacterial sepsis in young otherwise healthy patients carries a better prognosis than fungal sepsis in an elderly hematology patient. Similarly, urinary sepsis is commonly perceived as less fatal than chest or intraabdominal sepsis. A systematic review which addressed the impact of the source of infection on mortality (28), identified several studies in which lower in-hospital mortality was observed for urinary sepsis compared to respiratory sepsis. This observation was independent of the stage of sepsis with lower mortality observed in sepsis, severe sepsis and septic shock. Our results confirm the observation that in-hospital mortality is lower in critically ill patients with urinary sepsis compared to abdominal and respiratory sepsis. Factors influencing mortality differed between sepsis groups in our research, e.g., ICU readmission was a significant risk factor in abdominal sepsis, but played no role in pulmonary or urinary sepsis, indicating that the numerous ICU stays required for complex abdominal sepsis are associated with a worsening prognosis. In contrast, for pulmonary and urinary sepsis, the need for invasive ventilation was a significant risk factor for mortality. The origin of infection is often known to treating physicians early in the clinical course and as such, outcome prediction based on the type of causative infection using clinical data only, may be easier to implement than models relying on complex combinations of clinical data and biomarkers, which are often not readily available at the bedside. Modern monitoring devices allow the integration of such prognostic algorithms into their software package and facilitate easy clinical implementation for all patients requiring regular monitoring.

The strength of this study is that we used the eICU database, a public database containing a large number of datasets for critically ill patients to generate our models. Moreover, we included time series for vital signs and laboratory tests for up to 72 h after admission to ICU in patients with different origins of sepsis and demonstrated that the models outperformed existing prediction tools. However, our study also has limitations. External validation and comparison with other machine learning approaches are required to explore the transferability and generalizability of our models in different critical care settings. Furthermore, the combination of molecular diagnostics such as transcriptomics and genomics with the routinely available clinical data used in our model may further improve the performance.

CONCLUSION

We present a logistic regression model for different types of sepsis which are defined by their origin of infection using routinely available clinical data from a large publicly available dataset. We demonstrate that factors of importance show considerable heterogeneity depending on the source of infection.

DATA AVAILABILITY STATEMENT

Publicly available datasets were analyzed in this study. This study can be found in the eICU Collaborative Research Database repository (<https://eicu-crd.mit.edu/>).

ETHICS STATEMENT

Ethical review and approval was not required for the study on human participants in accordance with the local legislation and institutional requirements. Written informed consent for participation was not required for this study in accordance with the national legislation and the institutional requirements.

AUTHOR CONTRIBUTIONS

MP extracted the data. MP and IO implemented the code and analyzed the data. IW and MP agreed to be

the guarantors of all aspects of the work. All authors made substantial contributions to the design of the study, interpreted the results, drafted and critically revised the manuscript, and approved the final version and were involved in the study design and the selection of relevant variables from the dataset.

FUNDING

This research was partially supported by a Ph.D. scholarship from the Faculty of Engineering and Technology, LJMU.

SUPPLEMENTARY MATERIAL

The Supplementary Material for this article can be found online at: <https://www.frontiersin.org/articles/10.3389/fmed.2022.915224/full#supplementary-material>

REFERENCES

- Singer M, Deutschman CS, Seymour CW, Shankar-Hari M, Annane D, Bauer M, et al. The third International consensus definitions for sepsis and septic shock (Sepsis-3). *JAMA*. (2016) 315:801. doi: 10.1001/jama.2016.0287
- Volakli E, Spies C, Michalopoulos A, Groeneveld AJ, Sakr Y, Vincent J-L. Infections of respiratory or abdominal origin in ICU patients: what are the differences?. *Crit Care*. (2010) 14:R32. doi: 10.1186/cc8909
- Stortz JA, Cox MC, Hawkins RB, Ghita GL, Brumback BA, Mohr AM, et al. Phenotypic heterogeneity by site of infection in surgical sepsis: a prospective longitudinal study. *Crit Care*. (2020) 24:203. doi: 10.1186/s13054-020-02917-3
- Seymour CW, Kennedy JN, Wang S, Chang C-CH, Elliott CF, Xu Z, et al. Derivation, validation, and potential treatment implications of novel clinical phenotypes for sepsis. *JAMA*. (2019) 321:2003. doi: 10.1001/jama.2019.5791
- Bauer M, Gerlach H, Vogelmann T, Preissing F, Stiefel J, Adam D. Mortality in sepsis and septic shock in Europe, North America and Australia between 2009 and 2019—results from a systematic review and meta-analysis. *Crit Care*. (2020) 24:239. doi: 10.1186/s13054-020-02950-2
- Marshall JC. Why have clinical trials in sepsis failed?. *Trends Mol Med*. (2014) 20:195–203. doi: 10.1016/j.MOLMED.2014.01.007
- Nedeva C, Menassa J, Puthalakath H. Sepsis: inflammation is a necessary evil. *Front Cell Dev Biol*. (2019) 7:108. doi: 10.3389/fcell.2019.00108
- Pollard TJ, Johnson AEW, Raffa JD, Celi LA, Mark RG, Badawi O. The eICU collaborative research database, a freely available multi-center database for critical care research. *Sci Data*. (2018) 5:180178. doi: 10.1038/sdata.2018.178
- Kong G, Lin K, Hu Y. Using machine learning methods to predict in-hospital mortality of sepsis patients in the ICU. *BMC Med Inform Decis Mak*. (2020) 20:251. doi: 10.1186/s12911-020-01271-2
- Zimmerman JE, Kramer AA, McNair DS, Malila FM. Acute physiology and chronic health evaluation (APACHE) IV: hospital mortality assessment for today's critically ill patients. *Crit Care Med*. (2006) 34:1297–310. doi: 10.1097/01.CCM.0000215112.84523.F0
- Hosmer D. *Applied Logistic Regression*. Hoboken, NJ: Wiley (2013).
- Kohavi R, John GH. Wrappers for feature subset selection. *Artif Intell*. (1997) 97:273–324. doi: 10.1016/S0004-3702(97)00043-X
- Vincent JL, Moreno R, Takala J, Willatts S, de Mendonça A, Bruining H, et al. The SOFA (Sepsis-related Organ Failure Assessment) score to describe organ dysfunction/failure. On behalf of the working group on sepsis-related problems of the European society of intensive care medicine. *Intensive Care Med*. (1996) 22:707–10. doi: 10.1007/BF01709751
- Vincent JL, Moreno R. Clinical review: scoring systems in the critically ill. *Crit Care*. (2010) 14:207. doi: 10.1186/cc8204
- van Doorn WPTM, Stassen PM, Borggreve HF, Schalkwijk MJ, Stoffers J, Bekers O, et al. A comparison of machine learning models versus clinical evaluation for mortality prediction in patients with sepsis. *PLoS One*. (2021) 16:e0245157. doi: 10.1371/journal.pone.0245157
- Daviaud F, Grimaldi D, Dechartres A, Charpentier J, Geri G, Marin N, et al. Timing and causes of death in septic shock. *Ann Intensive Care*. (2015) 5:16. doi: 10.1186/s13613-015-0058-8
- Hotchkiss RS, Monneret G, Payen D. Sepsis-induced immunosuppression: from cellular dysfunctions to immunotherapy. *Nat Rev Immunol*. (2013) 13:862–74. doi: 10.1038/NRI3552
- Prescott HC, Calfee CS, Taylor Thompson B, Angus DC, Liu VX. Toward smarter lumping and smarter splitting: rethinking strategies for sepsis and acute respiratory distress syndrome clinical trial design. *Am J Respir Crit Care Med*. (2016) 194:147–55. doi: 10.1164/RCCM.201512-2544CP
- Demerle KM, Angus DC, Baillie JK, Brant E, Calfee CS, Carcillo J, et al. Sepsis subclasses: a framework for development and interpretation. *Crit Care Med*. (2021) 49:748–59. doi: 10.1097/CCM.0000000000004842
- Davenport EE, Burnham KL, Radhakrishnan J, Humburg P, Hutton P, Mills TC, et al. Genomic landscape of the individual host response and outcomes in sepsis: a prospective cohort study. *Lancet Respir Med*. (2016) 4:259–71. doi: 10.1016/S2213-2600(16)00046-1
- Sweeney TE, Azad TD, Donato M, Haynes WA, Perumal TM, Henao R, et al. Unsupervised analysis of transcriptomics in bacterial sepsis across multiple datasets reveals three robust clusters. *Crit Care Med*. (2018) 46:915–25. doi: 10.1097/CCM.0000000000003084
- Scicluna BP, van Vught LA, Zwiderman AH, Wiewel MA, Davenport EE, Burnham KL, et al. Classification of patients with sepsis according to blood genomic endotype: a prospective cohort study. *Lancet Respir Med*. (2017) 5:816–26. doi: 10.1016/S2213-2600(17)30294-1
- Stanski NL, Wong HR. Prognostic and predictive enrichment in sepsis. *Nat Rev Nephrol*. (2020) 16:20–31. doi: 10.1038/S41581-019-0199-3
- Zhang Z, Zhang G, Goyal H, Mo L, Hong Y. Identification of subclasses of sepsis that showed different clinical outcomes and responses to amount of fluid resuscitation: a latent profile analysis 11 medical and health sciences 1103 clinical sciences. *Crit Care*. (2018) 22:347. doi: 10.1186/S13054-018-2279-3
- Gårdlund B, Dmitrieva NO, Pieper CF, Finfer S, Marshall JC, Taylor Thompson B. Six subphenotypes in septic shock: latent class analysis of the PROWESS Shock study. *J Crit Care*. (2018) 47:70–9. doi: 10.1016/j.jcrrc.2018.06.012

26. Bhavani SV, Carey KA, Gilbert ER, Afshar M, Verhoef PA, Churpek MM. Identifying novel sepsis subphenotypes using temperature trajectories. *Am J Respir Crit Care Med.* (2019) 200:327–35. doi: 10.1164/RCCM.201806-1197OC
27. Wang D, Li J, Sun Y, Ding X, Zhang X, Liu S, et al. Machine learning model for accurate prediction of sepsis in ICU patients. *Front Public Health.* (2021) 9:754348. doi: 10.3389/FPUBH.2021.754348
28. Motzkus CA, Luckmann R. Does infection site matter? A systematic review of infection site mortality in sepsis. *J Intensive Care Med.* (2017) 32:473–9.

Conflict of Interest: The authors declare that the research was conducted in the absence of any commercial or financial relationships that could be construed as a potential conflict of interest.

Publisher's Note: All claims expressed in this article are solely those of the authors and do not necessarily represent those of their affiliated organizations, or those of the publisher, the editors and the reviewers. Any product that may be evaluated in this article, or claim that may be made by its manufacturer, is not guaranteed or endorsed by the publisher.

Copyright © 2022 Pieroni, Olier, Ortega-Martorell, Johnston and Welters. This is an open-access article distributed under the terms of the Creative Commons Attribution License (CC BY). The use, distribution or reproduction in other forums is permitted, provided the original author(s) and the copyright owner(s) are credited and that the original publication in this journal is cited, in accordance with accepted academic practice. No use, distribution or reproduction is permitted which does not comply with these terms.