

Figure Captions:

Figure 1: Sea-Land Interface of Maritime Transportation Systems

Figure 2: Framework for Risk Assessment of Seaport Operations

Figure 3: Generic Model for Disruption of Seaport Operations

Figure 4: Fuzzy Triangular Membership Function

Figure 5: Example of Converting Fuzzy Ratings to 5 Non-normalized grades

Figure 6: A Specific Model for Disruption Risks of a Seaport Operation

Figure 7: Sensitivity Analysis of the Model Output to the Variation of Each Sub-Criterion

FIGURE 1

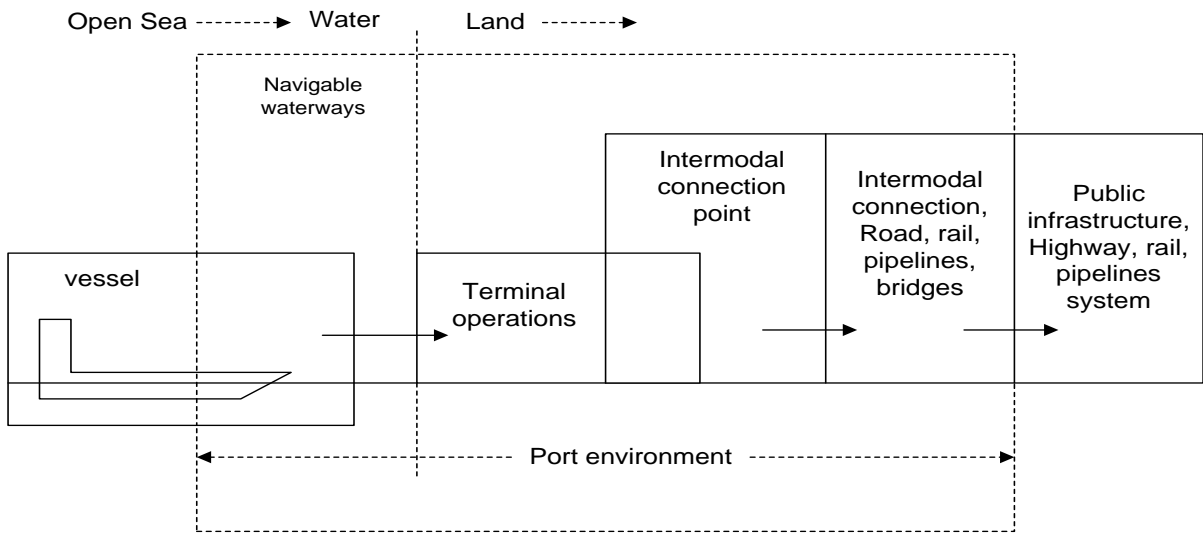


FIGURE 2

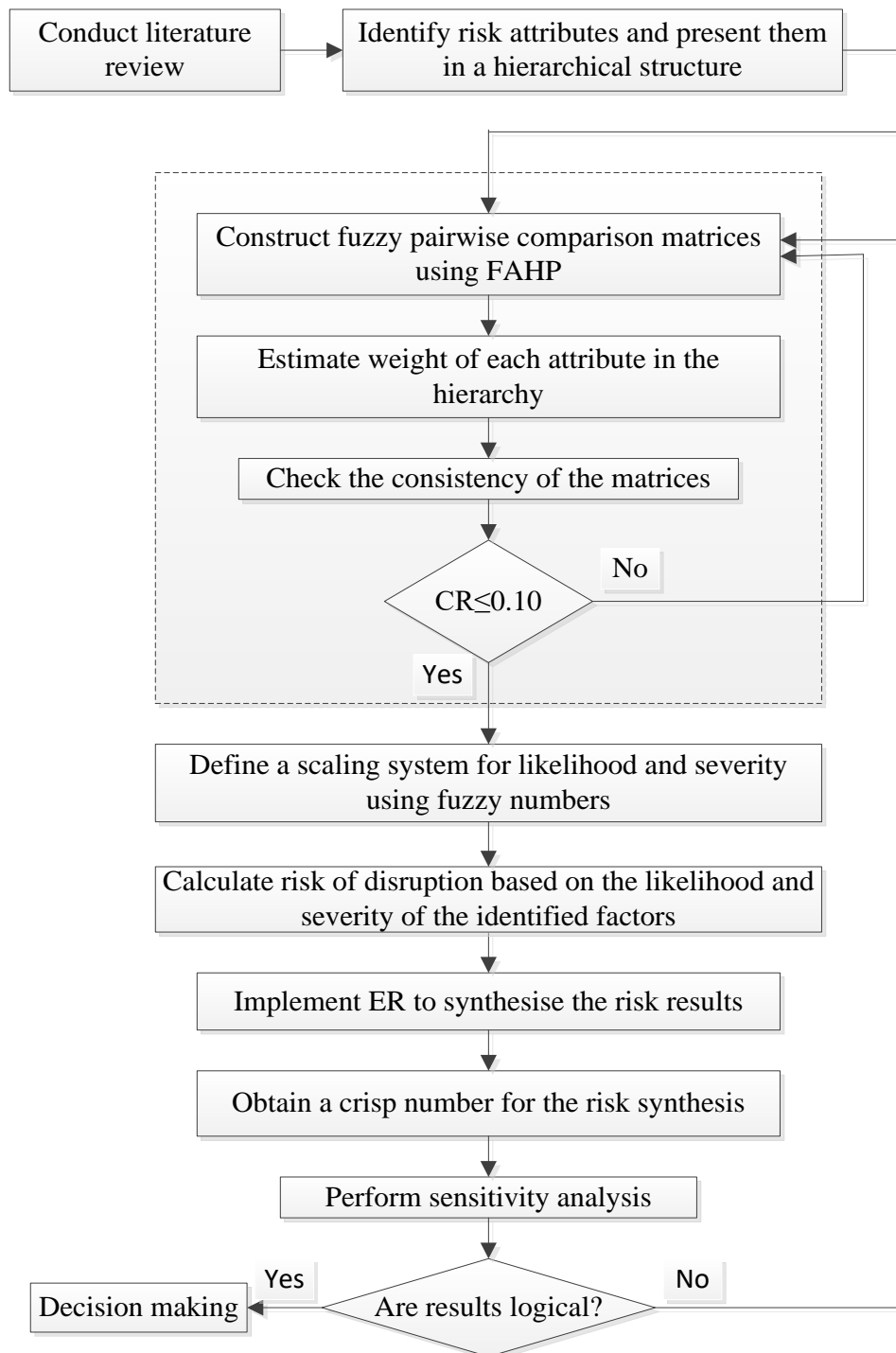


FIGURE 3

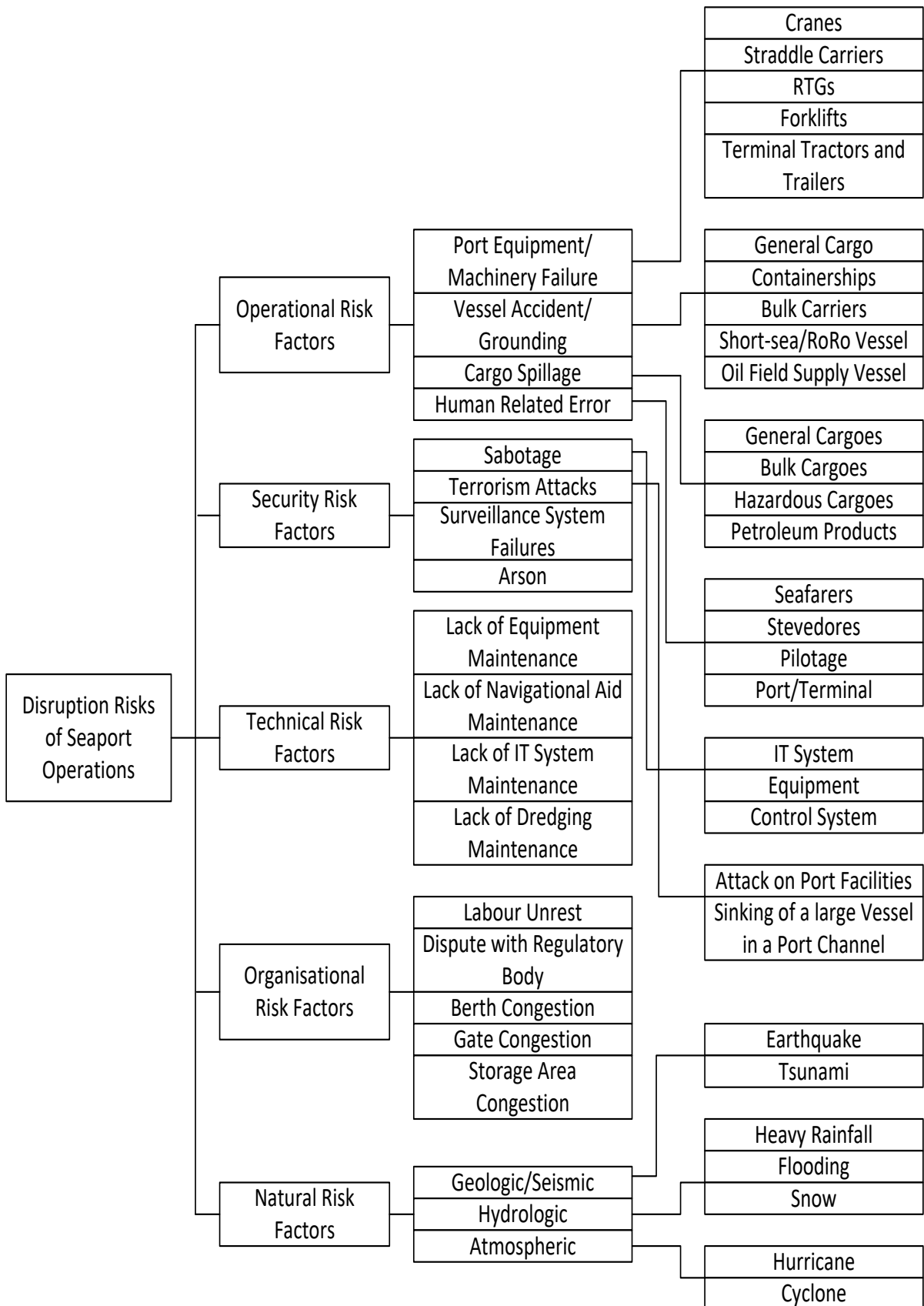


FIGURE 4

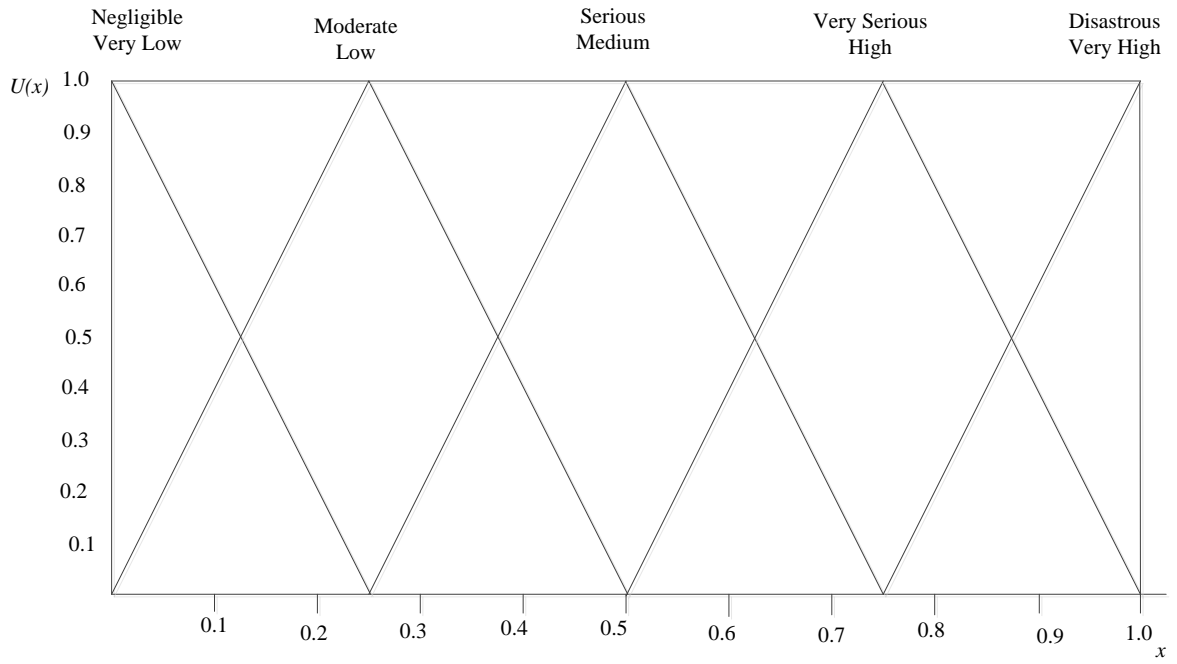


FIGURE 5

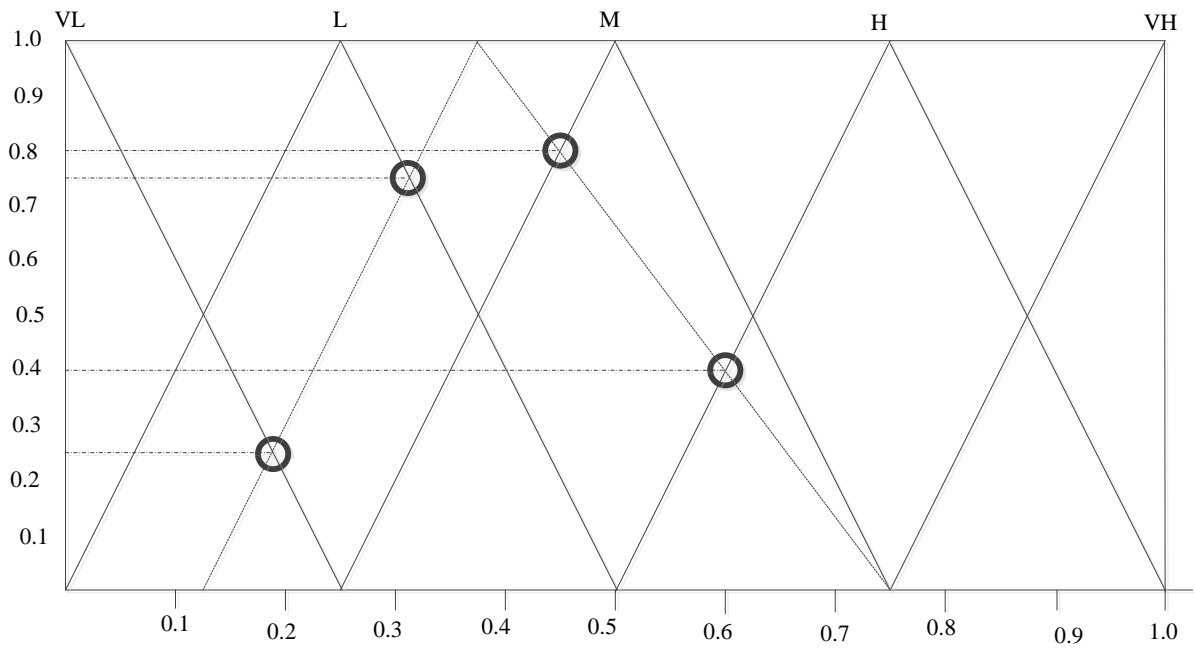


FIGURE 6

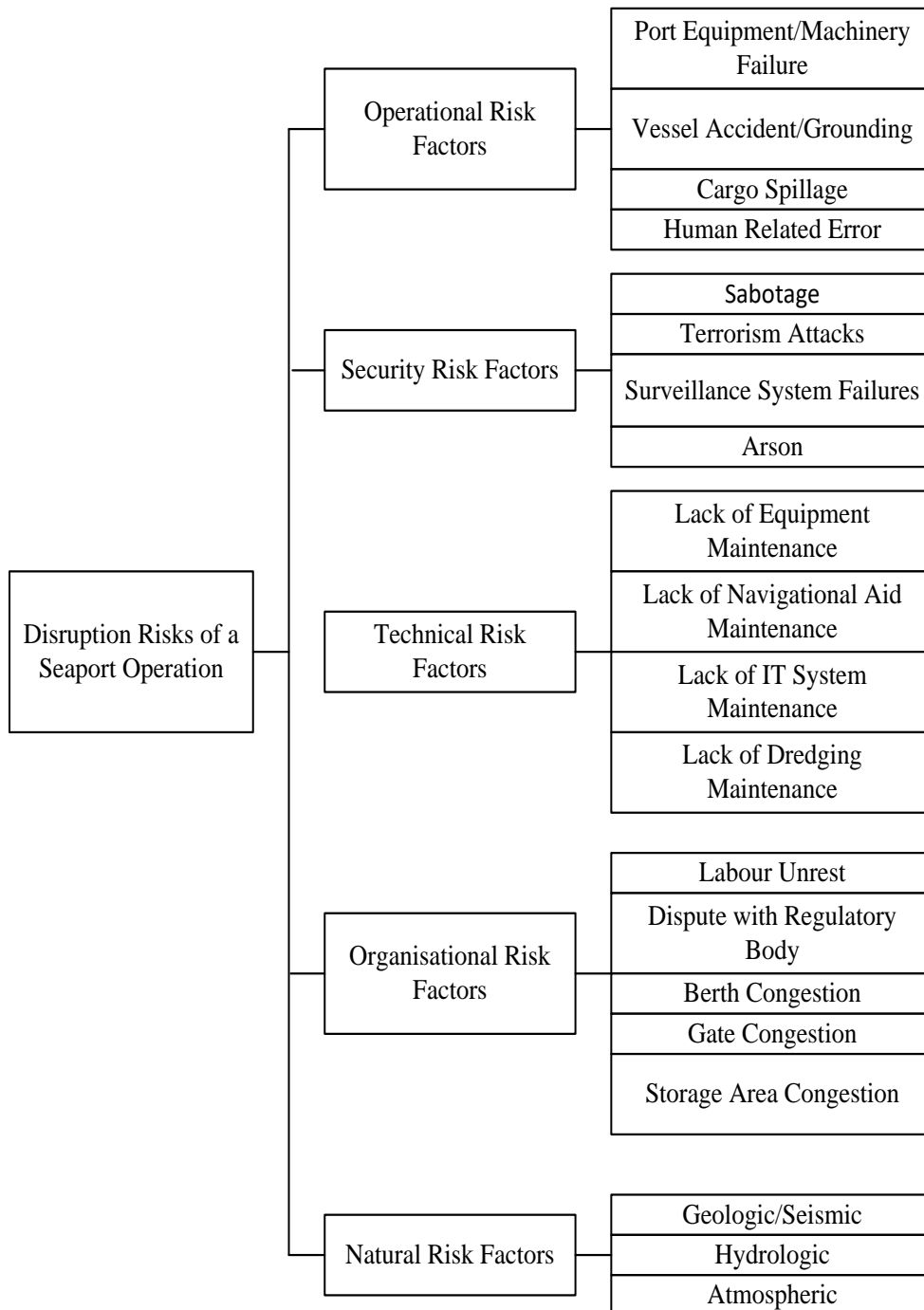


FIGURE 7

