

LJMU Research Online

Sbrana, A, Cau, A, Cicala, D, Franceschini, S, Giarrizzo, T, Gravina, MF, Ligas, A, Maiello, G, Matiddi, M, Parisi, A, Sartor, P, Sbrana, M, Scacco, U, Valente, T, Viva, C and Russo, T

Ask the shark: blackmouth catshark (*Galeus melastomus*) as a sentinel of plastic waste on the seabed

<https://researchonline.ljmu.ac.uk/id/eprint/19029/>

Article

Citation (please note it is advisable to refer to the publisher's version if you intend to cite from this work)

Sbrana, A ORCID logoORCID: <https://orcid.org/0000-0001-7916-7580>, Cau, A, Cicala, D, Franceschini, S, Giarrizzo, T, Gravina, MF, Ligas, A, Maiello, G, Matiddi, M, Parisi, A, Sartor, P, Sbrana, M, Scacco, U, Valente, T, Viva, C and Russo. T (2022) Ask the shark: blackmouth catshark (*Galeus melastomus*)

LJMU has developed **LJMU Research Online** for users to access the research output of the University more effectively. Copyright © and Moral Rights for the papers on this site are retained by the individual authors and/or other copyright owners. Users may download and/or print one copy of any article(s) in LJMU Research Online to facilitate their private study or for non-commercial research. You may not engage in further distribution of the material or use it for any profit-making activities or any commercial gain.

The version presented here may differ from the published version or from the version of the record. Please see the repository URL above for details on accessing the published version and note that access may require a subscription.

For more information please contact researchonline@ljmu.ac.uk



Ask the shark: blackmouth catshark (*Galeus melastomus*) as a sentinel of plastic waste on the seabed

Alice Sbrana^{1,2} · Alessandro Cau^{3,4} · Davide Cicala¹ · Simone Franceschini⁵ · Tommaso Giarrizzo⁶ · Maria Flavia Gravina^{1,4} · Alessandro Ligas⁷ · Giulia Maiello^{1,2} · Marco Matiddi⁸ · Antonio Parisi⁹ · Paolo Sartor⁷ · Mario Sbrana⁷ · Umberto Scacco⁸ · Tommaso Valente^{8,10} · Claudio Viva⁷ · Tommaso Russo¹

Received: 16 March 2022 / Accepted: 14 June 2022 / Published online: 7 July 2022
© The Author(s) 2022

Abstract

The presence of plastic waste in the marine environment has driven the scientific community to make significant efforts to study and mitigate its possible effects. One of the critical aspects is to determine if and how an increase in ingestion events may occur as a result of the accumulation of plastic waste on the seabed. In this study, *G. melastomus* is examined for its ability to indirectly provide information on the amount of macroplastics accumulating on the seafloor. Plastic ingestion is explored by describing the feeding habits of the species, which have the potential to provide very useful information regarding biological or ecological issues. The diet of *G. melastomus* mainly consisted of cephalopods, bathypelagic fishes, and decapod crustaceans, increasing in diversity during growth. The generalist-opportunistic feeding behaviour of this species leads to the incidental ingestion of plastic particles ($N=47$, with a mean (\pm SD) of 1.47 ± 0.28 per specimen) which can be indirectly associated to the presence of macroplastics on the seafloor. Indeed, our results indicate a significant relationship between the amount of macroplastics present on the seabed and the frequency of ingestion of plastic particles by blackmouth catshark. We propose *G. melastomus* as an excellent candidate for developing a valid monitoring strategy for the presence of plastics on the seabed, as requested by the EU Marine Strategy Framework Directive.

Keywords Plastic pollution · Mediterranean Sea · Biomonitoring · *Galeus melastomus* · Diet

Introduction

Over the last century, plastic production has grown exponentially as a result of its versatility, durability, malleability, and low price, becoming part of everyday life and delivering social benefits (Geyer et al. 2017; Boucher et al.

Responsible Editor: J. Carlson.

✉ Alice Sbrana
alice.sbrana@uniroma2.it

¹ Department of Biology, University of Rome Tor Vergata, Via della Ricerca Scientifica 1, 00133 Rome, Italy

² PhD Program in Evolutionary Biology and Ecology, University of Rome Tor Vergata, Via della Ricerca Scientifica 1, 00133 Rome, Italy

³ Department of Environmental and Life Sciences, University of Cagliari, Via T. Fiorelli 1, 09126 Cagliari, Italy

⁴ National Inter-University Consortium for Marine Sciences (CoNISMa), Piazzale Flaminio, Rome, Italy

⁵ Hawaii Institute of Marine Biology, University of Hawaii, Kaneohe, HI, USA

⁶ Instituto de Ciências Do Mar (LABOMAR), Universidade Federal Do Ceará (UFC), Avenida da Abolição 3207, Fortaleza, CE 60165-081, Brazil

⁷ Consorzio per il centro Interuniversitario di Biologia Marina ed Ecologia Applicata “G. Bacci”, Viale Nazario Sauro 4, 57100 Livorno, Italy

⁸ Nekton Lab, ISPRA, Italian National Institute for Environmental Protection and Research, Via di Castel Romano 100, 00144 Rome, RM, Italy

⁹ Department of Economics and Finance, Faculty of Economics, University of Rome Tor Vergata, Rome, Italy

¹⁰ Department of Environmental Biology, Sapienza University of Rome, Piazzale Aldo Moro 5, 00185 Rome, Italy

2020). The development and diffusion of plastic materials have led to inevitable consequences with repercussions on waste management, becoming a topic of discussion in recent years (Thompson et al. 2009; GESAMP 2019; Markic et al. 2020). The release of plastic wastes affects both terrestrial and aquatic ecosystems, contributing to environmental pollution (Kumar et al. 2021). Irrational production, inappropriate disposal at landfills, and insufficient recycling lead to plastic becoming waste. And the waste, sooner or later, comes to sea (Eriksen et al. 2014). In the case of improper discharge, the plastic enters waterways and into the oceans, causing marine plastic leaks (Boucher et al. 2020). A total of 35% of plastic leakage is attributed to the cities and towns located directly on the coast (Boucher and Billard 2020). The remaining 65% is generated from the inland and comes into sea water by surface run-off (Boucher and Billard 2020). An important contribution of plastics also comes from rivers, with the highest leakage rates from catchment areas (basins) hosting large rivers (Hurley et al. 2018).

The abundance, persistence, and ubiquity of plastic in seawaters have made this pollutant one of the most controversial topics in recent years, representing a serious threat to marine organisms. A wide range of animals can ingest plastic particles once they reach the sea (Cau et al. 2019; Markic et al. 2020; Capone et al. 2020; Santos et al. 2021), either intentionally—by mistaking plastic particles for natural prey, or accidentally—by ingesting items already consumed by their prey (Bergmann et al. 2015). Most of the plastic seems to be accumulated on the seafloor in form of microplastics (MiP < 5 mm), or macroplastics (MaP 25–1000 mm), or mesoplastics (MeP 5–25 mm) (GESAMP 2019) with very heterogeneous and complex patterns (Reisser et al. 2015; Franceschini et al. 2019; Tsiaras et al. 2021). These accumulation areas increase the risk of coming into contact with the pollutant, especially for species that live or feed near the seafloor (Alomar et al. 2020; Franceschini et al. 2021).

Plastic ingestion is associated with a variety of negative health effects. Macroplastics may provoke blockages or internal bleeding in the intestines of the species (Van Franeker et al. 2011; Camedda et al. 2014; Provencher et al. 2017; Domènech et al. 2019). The smaller pieces of plastic (MiP or MeP), on the other hand, can have indirect effects such as decrease of mobility, reduction of feeding and growth, and worsened body condition (Valente et al. 2019; Markic et al. 2020; Sbrana et al. 2020). In addition, plastic additives may induce physiological alteration, such as endocrine functions (Flint et al. 2012; Rochman et al. 2014). Several studies have sought to understand the relationship between ingestion of plastic and environmental contamination, with very promising results. A study conducted in coastal areas of the Western Mediterranean Sea found a correlation between the amount of plastic in the digestive tract of the demersal to semi-pelagic species, *Boops boops*,

and the level of pollution in the environment, using an index based on several factors, including population density, river inputs, distance from the coast, and shipping routes (Sbrana et al. 2020). More recent studies revealed that proximity to hotspots of macroplastics accumulation significantly correlates with microplastic ingestion by *Nephrops norvegicus* (Linnaeus, 1758) (Cau et al. 2019, 2020; Franceschini et al. 2021). It is worth noting that there is a growing trend of evidence that marine plastics pollution contaminates key stocks for fisheries, with potential negative consequences to human health, resources status, and socio-economic sectors (Rochman et al. 2015; Lusher et al. 2017). Numerous studies have suggested also that plastics in the marine environment can adversely affect sharks (Anastasopoulou et al. 2013; Cartes et al. 2016; Alomar and Deudero 2017; Bernardini et al. 2018; Valente et al. 2019). In marine food webs, elasmobranchs play an important role as apex predators and seem more frequently affected by plastic ingestion than bony fishes within deep-water habitats (López-López et al. 2018). Therefore, sharks and rays could be considered as sentinel species for marine pollution biomonitoring studies (Alves et al. 2016; Fossi et al. 2018).

The Mediterranean Sea, considered as one of the most threatened environments in the world, is also subject to this ubiquitous pollutant (Eriksen et al. 2014; Cózar et al. 2015; Suaria et al. 2016; Zambianchi et al. 2017; Liubartseva et al. 2018; Tsiaras et al. 2021). The total plastic accumulated in the Mediterranean Sea is estimated at 1,178,000 tonnes, with an annual marine leakage of 229,000 tonnes. Based on these data, Italy (and Rome locality) appears to be one of the three top contributors of plastic leakage in the Mediterranean Sea (Boucher and Billard 2020).

The spread and potential impacts of plastic waste in the marine environment are a global emergency that is pushing the scientific community to make a huge effort to understand and help stem these phenomena (Thompson et al. 2009; GESAMP 2019; Santos et al. 2021). As plastic is undergoing, even in the marine environment, a phenomenon of miniaturization and degradation that makes it increasingly less traceable (Chamas et al. 2020), it is crucial to enhance the monitoring of macroplastics and their role in the process of environmental contamination. At the same time, plastic can impact biota through accidental ingestion (Savoca et al. 2019). Therefore, it is paramount to understand whether and how the accumulation of plastic waste on the seafloor can lead to increased ingestion events. However, given that marine pollution has also reached very high levels in the Mediterranean and larger areas, it is very complicated and costly to make spatial and temporal assessments of the different levels of contamination (Galgani 2015).

The blackmouth catshark *Galeus melastomus* (Rafinesque, 1810) is a demersal bottom dwelling species, inhabiting continental shelf breaks, and slope habitats (common

depth range: 150–1200 m). As a generalist meso predator, it plays an important role in the deep-water food web in providing a link between the upper and lower trophic levels (D'iglio et al. 2021). *G. melastomus* is the most abundant species of Selacii in the Mediterranean Sea (Bradai et al. 2012). The species has a considerable part of its population living in the Mediterranean beyond the deepest boundary trawled by vessels (Peristeraki et al. 2020). Indeed, the species and especially its reproducers, can live up to 1600 m, being abundant still at 1400 m (Carrassón et al. 1992; Cartes et al. 2016). In this way, the deepest part of its spatial distribution is outside the range of activity of bottom trawlers and protected by direct fishing exploitation, contributing to the stability of the whole stock. This species is therefore an ideal candidate for monitoring plastics distribution on different fishing grounds (Fossi et al. 2018).

In this context, this study aims to: I) examine the stomach contents of *G. melastomus* to reconstruct its feeding ecology; II) evaluate and characterize the plastics ingested by the species, to detect sources of plastic pollution; III) relate plastics on the seabed and the ingestion of plastics to determine whether it can provide useful information about the amount of macroplastics accumulating on the seafloor.

Materials and methods

Study area and collection of samples

Specimens of *G. melastomus* were collected in the central Tyrrhenian Sea (FAO Geographical Sub Area 9—Western Mediterranean Sea), in summer 2020–2021. This area has a very narrow continental shelf, characterized by fine sands and muddy bottoms (Ardizzone et al. 2018). The coastal area is heavily populated with large urban centres, industrial settlements, and important ports, being close to Rome city. The Tiber River run-off significantly affects the chemical-physical traits of the area, also bringing contaminants such as plastic debris (Crosti et al. 2018). Samples were collected both on board of a commercial bottom trawl fishing vessel and during the MEDITS (MEDiterranean International bottom Trawl Survey) experimental trawl surveys. Based on a stratified random sampling design, 29 fishing hauls were collected over 29 sampling locations (Fig. 1), covering the major fishing grounds in the study area. In this way, sampling sites mirror the fishing footprint of the Italian fleet operating in the GSA9 (Russo

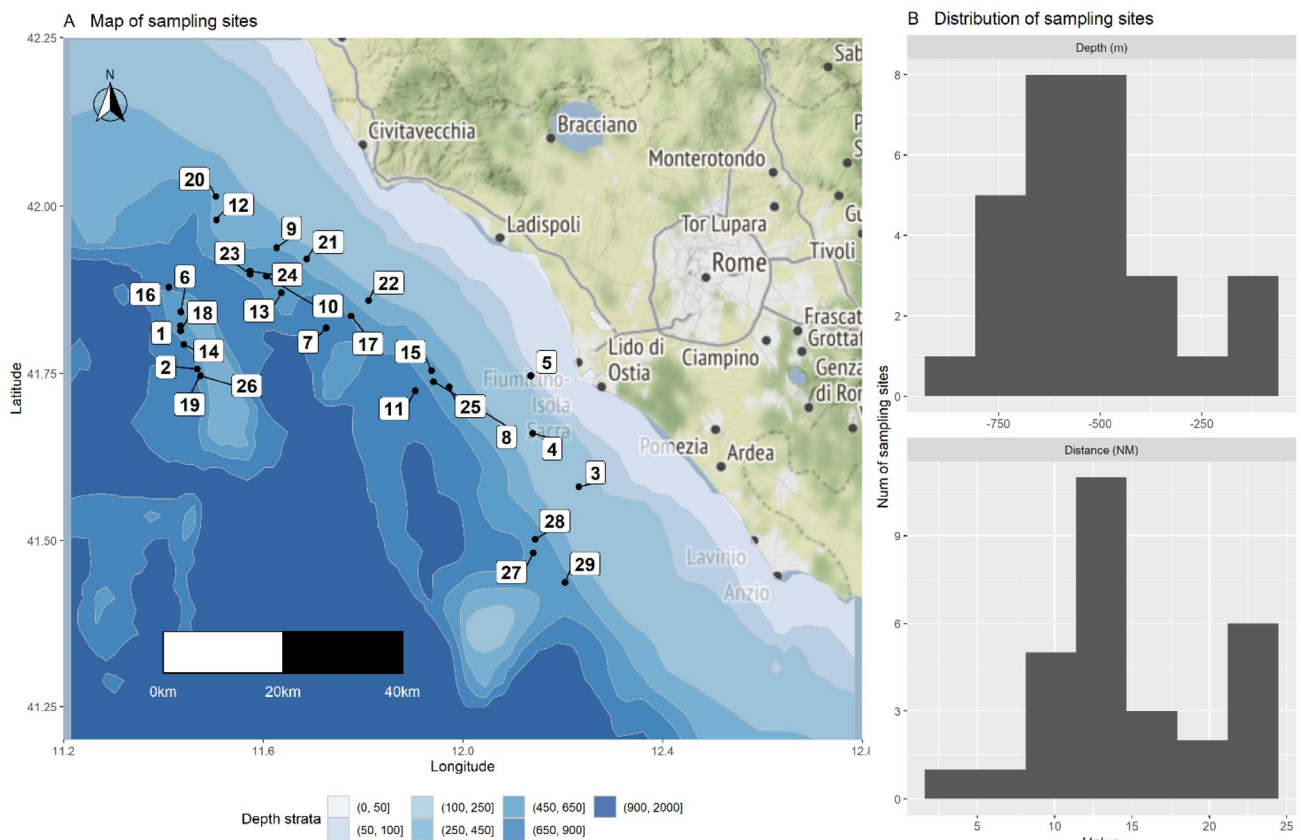


Fig. 1 Map of sampling sites of *Galeus melastomus* (A), histogram of haul distribution by depth (B) and haul distance from the coast (C) in the central Tyrrhenian Sea

et al. 2019). The specimens of *G. melastomus* collected at each sampling site were immediately separated during the sorting of catch, frozen, and stored at -20°C on board of the vessel and, successively, transferred to the laboratory for analyses.

Laboratory analyses

Once thawed to room temperature, basic measurements were recorded for each fish, including total length (TL, mm), body wet weight (TW, g), gastrointestinal wet weight (GIW, g), sex (F: Female and M: Male) and maturity stage (1: immature virgin, 2: maturing, 3a: mature, 3b: mature/extruding) assigned according to (Follesa and Carbonara 2019). Gastrointestinal tracts (stomach and intestine with their contents and wall) were removed by dissection from each fish and stored individually in glass beakers. The total volume of stomach contents was recorded for each individual. Preys within the stomach were identified at the lowest possible taxonomic level (decapod crustaceans, fish, and cephalopods were usually identified to species) using specific taxonomic literature (e.g. Clarke 1986; Riedl and Abel 1991; Falciai and Minervini 1992; Tuset et al. 2008). For each *G. melastomus*, the following diet data were recorded: the percentage of stomach volume, the number, and the weight of prey items. Finally, plastics were identified and classified in shape: fragment, film, sphere, and including the distinction between fibre and filament, as reported by Matiddi et al. (2021); colours, and subdivided into three size classes ($330\text{ }\mu\text{m}$ –1 mm; 1–5 mm; 5–25 mm). Plastics identifications were performed considering: (i) the resistance of the particles to the contact with tweezers; (ii) the absence of biological structures; (iii) either typical skewed shapes and crooked edges or uniform thickness; (iv) distinctive colours. Furthermore, we considered plastic items those that were showing a dark sticky mark when touched with a hot needle (Hermesen et al. 2018).

During sample processing within the laboratory, best practice contamination control measures were applied to reduce the risk of contamination. In all laboratory analyses, a 100% cotton lab coat was worn at all times, and all equipment and surfaces were thoroughly washed with 70% ethanol and/or rinsed with water (GESAMP 2019). Plastics found in the samples were compared with equipment used during all procedural steps, based on their characteristics (polymer, colour, and type). Additionally, fibres detected in samples were excluded from the analysis due to the inability to prevent efficiently their background contamination (Torre et al. 2016).

After that, polymer detection was obtained using Nicolet iS10 Fourier Transform Infrared Spectroscopy with Attenuated Total Reflection (FT-IR ATR, Thermo Fisher Scientific, Madison, WI, USA). FT-IR was used to identify objects greater than 1 mm in size in 10% or more of the particles

collected in this study, according to guidelines developed by the MSFD technical group on marine litter (Galgani et al. 2013). The identification was based on the comparison among the analysed IR spectra and known polymer spectra libraries (“HR Spectra Polymers and Plasticizers by ATR”, “HR Hummel Polymer and Additives”, “HR Polymer Additives and Plasticizers”), provided with software OMNIC 9.8.286 (Thermo Fisher Scientific Inc.). The level of certainty of the comparison between the sample spectrum and the polymer library database for all analyses was set up to a minimum of 70%.

Seafloor macroplastics were collected through MEDITS trawl campaign (143 sampling sites from 2013 to 2019). The survey follows a stratified random sampling design, proportional to bathymetric strata (i.e. 10–50, 51–100, 101–200, 201–500, and 501–800 m). Information on the plastic litter was recorded in terms of total weight, the total number following the procedural protocol by Fiorentino et al. (2013). The amount of marine litter occurring at each sampling site was defined according to MEDITS protocol as the distance-weighted mean of the amount of litter in the sampling sites of the MEDITS campaign. We adopted this approach considering that: (1) the MEDITS protocol for litter assessment represents an acknowledged and powerful source of information for the distribution of MaP litter in the Mediterranean Sea; (2) the distribution of the MEDITS sampling sites always allowed to use from 3 to 14 MEDITS sites to estimate the amount of litter in the sampling sites of this study.

Data and statistical analyses

The feeding incidence (%FI = individuals with identifiable prey remains/total number of fishes \times 100) was used to evaluate the rate of feeding activity, whereas the degree of stomach fullness was estimated by the fullness index = GIW/TW, being GIW the gastrointestinal wet weight and TW the body wet weight. To assess the importance of prey items in the diet of *G. melastomus*, the following dietary indices were calculated: relative abundance (%N = number of individuals of prey *i*/total number of prey \times 100), weight percentage (%W = weight of prey *i*/total weight of all prey \times 100), volume percentage (%Vol = volume of prey *i*/total volume of all prey \times 100), and frequency of occurrence (%FO = number of stomachs containing prey *i*/total number of stomachs containing prey \times 100). Based on the Costello graphical method (Costello 1990) modified by Amundsen et al. (1996), the feeding behaviour of *G. melastomus* at different length classes (size) was determined by plotting prey-specific abundance (%Vol) against the frequency of occurrence (%FO) on a two-dimensional graph. The position of prey types in the two-dimensional plot can be used to infer precise information regarding prey importance, feeding strategy, and niche size contribution, according to Amundsen et al. (1996).

Correspondence analysis (CA) was used to graphically inspect the variation in diet (preys volume abundance) and relate the preference towards different food items according to depth, size, and sex. Also, non-parametric multivariate PERmutational ANalysis of VAriance (PERMANOVA) was applied to test for differences in *G. melastomus* diet according to different dwelling depths, size, and sex. To do so preys volume abundance was used as the response variable, using depth, size, and sex as explanatory factors.

For each prey species a trophic level (TrL) was assigned using data from the FishBase database for fishes (<http://www.fishbase.org>) or SeaLifeBase (<http://www.sealifebase.org>) for invertebrates. To estimate individual TrL of *G. melastomus*, the mean TrL of prey items was proportionally weighted based on their contribution to the diet (weighted mean of TrL by the volume occupied by each prey), aiming at estimating the instantaneous Trophic level of each “meal” (Cortés 1999), a snapshot of the short-term diet of *G. melastomus* individuals. Trophic levels of each prey were listed in Table 2.

Microplastic abundance was expressed as the number of microplastic items found in every single gut. The frequency of occurrence (FO%) of ingested microplastics was computed as the percentage of individuals examined containing at least one microplastic upon the total sample.

Generalized Additive Models (GAMs), a non-parametric extension of GLMs that includes smooth functions (a piecewise polynomial curve) of explanatory variables (Leathwick et al. 2006), were used to evaluate whether different factors including fish biometric parameters, the weighted mean of the trophic level of each prey, characteristics of the sampling sites, and the amount of MaP on the seafloor explain variations in the frequency of plastics ingested by *G. melastomus*. The R packages mgcv (Wood 2017) was used to fit a series of models in which the number of plastic items ingested by each specimen of *G. melastomus* represented the dependent variable and the following predictors:

- Fish length
- Fish sex
- Depth of the sampling site
- Distance from the coast of the sampling site

- Trophic Level
- The stomach fullness
- Amount of MaP as the number of items per Km²;
- Amount of MaP as the weight of items per Km.²

All these potential predictors were evaluated using a model selection on all the possible combinations of them. The Quasi-Poisson distribution was used to model the distribution of the dependent variable (number of plastic items ingested). The Quasi-Poisson distribution is a generalization of the Poisson distribution and is commonly used to model overdispersed count (discrete) variables when the variance is greater than the mean (Zeileis et al. 2015). Model selections were based on the information-theoretic approach (Burnham and Anderson 2007) by comparing models AICs (Akaike's Information Criterion; Akaike 1974).

Results

A total of 164 *G. melastomus* were collected in the central Tyrrhenian Sea: 31 stomachs were empty or regurgitated (19%) and 133 contained food (%FI = 81%). Overall, stomach fullness ranged between 0.01 and 0.36 with a median value of 0.06. The analysis of the length-frequency distribution for this species indicated that the samples contained individuals of three distinct length classes, defined according to the natural breaks in the observed distribution (15–25 cm, 26–35 cm, 36–55 cm). Details on biometrics and stomach contents are presented in Table 1, where: the number of individuals, sex, fullness, and frequency of empty–full stomachs are summarized for each length class.

Table 2 presents the prey list and dietary index values (%Vol, %N, %FO, and TrL) for each food item. A total of 28 prey taxa were found in the stomach contents. Most of the diet consisted of Cephalopoda (Histioteuthidae and Sepioliidae), fishes (both bathypelagic species, as Myctophidae and Stomiiformes benthic species, such as Pleuronectiformes and demersal species, such as Gadiformes), and Crustacea (Decapoda and Euphausiacea). In general, the number of preys was lower in the smaller individuals (length class: 15–25 cm) than in the other length classes (pie charts of

Table 1 Information on biometric characteristics [n. of individuals; sex (Female: F and Male: M)], and stomach fullness, the percentage of empty stomachs (% Empty), and full stomachs (% Full) recorded

| Length class (cm) | N. individuals | Sex | | Fullness | Prey items | |
|-------------------|----------------|-----|----|----------|------------|--------|
| | | F | M | | % Empty | % Full |
| 15 – 25 | 23 | 13 | 10 | 0.11 | 30.43 | 69.57 |
| 26 – 35 | 41 | 18 | 23 | 0.07 | 17.07 | 82.93 |
| 36 – 55 | 100 | 78 | 22 | 0.07 | 16.00 | 84.00 |

for each length class (15–25 cm; 26–35 cm; 36–55 cm) of *Galeus melastomus* collected in the central Tyrrhenian Sea

Table 2 Diet composition of *Galeus melastomus* and percentage values of dietary indexes calculated for each prey item: volume (%Vol); abundance (%N); frequency of occurrence (%FO); and trophic level according to FishBase or SeaLifeBase (TrL)

| Prey | %Vol | %N | %FO | TrL | Prey | %Vol | %N | %FO | TrL |
|----------------------------------|-------|-------|-------|-----|----------------------------------|-------|------|-------|------|
| Cephalopoda | | | | | Osteichthyes | | | | |
| Oegopsida | | | | | Anguilliformes | | | | |
| Histioteuthidae | | | | | Nettastomatidae | | | | |
| <i>Histioteuthis bonnellii</i> | 1.15 | 22.32 | 1.22 | 4.2 | <i>Nettastoma melanurum</i> | 0.19 | 0.26 | 1.22 | 3.5 |
| Sepiida | | | | | Aulopiformes | | | | |
| Sepiolidae | | | | | Chlorophthalmidae | | | | |
| <i>Heteroteuthis dispar</i> | 2.56 | 0.78 | 2.44 | 3.6 | <i>Chlorophthalmus agassizi</i> | 1.18 | 0.26 | 1.22 | 3.17 |
| <i>Rossia macrosoma</i> | 2.56 | 0.78 | 2.44 | 4 | Gadiformes | | | | |
| <i>Sepietta oweniana</i> | 2.56 | 0.78 | 2.44 | 3.5 | Macrouridae | | | | |
| Cephalopoda und | 20.71 | 22.32 | 40.85 | – | <i>Hymenocephalus italicus</i> | 0.20 | 0.26 | 0.61 | 3.4 |
| Malacostraca | | | | | Merlucciidae | | | | |
| Amphipoda | | | | | <i>Merluccius merluccius</i> | 0.40 | 0.52 | 1.22 | 4.4 |
| <i>Hyperiidae sp.</i> | 0.33 | 1.04 | 3.05 | 2 | Myctophiformes | | | | |
| Decapoda | | | | | Myctophidae | | | | |
| <i>Aristeus antennatus</i> | 0.31 | 1.15 | 0.61 | 3.3 | <i>Ceratoscopelus maderensis</i> | 1.50 | 1.11 | 3.35 | 3.3 |
| <i>Parapeneus longirostris</i> | 7.02 | 1.04 | 3.66 | 3.7 | <i>Lampanyctus crocodilus</i> | 1.50 | 1.16 | 3.35 | 3.2 |
| <i>Pasiphaea sivado</i> | 5.16 | 2.09 | 7.93 | 3.2 | <i>Myctophum punctatum</i> | 1.50 | 1.11 | 3.35 | 3.4 |
| <i>Polychaetes typhlops</i> | 0.51 | 1.15 | 0.61 | 3.6 | <i>Symbolophorus veranyi</i> | 1.50 | 1.11 | 3.35 | 3.25 |
| <i>Processa canaliculata</i> | 0.06 | 1.15 | 0.61 | 3.1 | Pleuronectiformes | | | | |
| Crangonidae und | 0.51 | 1.15 | 1.22 | 3.2 | Bothidae | | | | |
| Natantia und | 8.66 | 1.15 | 23.17 | – | <i>Arnoglossus thori</i> | 0.02 | 8.96 | 0.6 | 3.7 |
| Penaeidae und | 7.02 | 1.04 | 3.66 | 3.5 | Soleidae | | | | |
| Sergestidae und | 5.22 | 5.22 | 9.15 | – | <i>Microchirus sp.</i> | 0.07 | 4.48 | 0.91 | 3.3 |
| Anomura | | | | | <i>Microchirus variegatus</i> | 0.07 | 4.48 | 0.91 | 3.3 |
| <i>Anapagurus laevis</i> | 0.31 | 0.26 | 0.61 | – | Stomiiformes | | | | |
| Euphausiacea | | | | | Stomiidae | | | | |
| Euphausiidae | | | | | <i>Chauliodus sloani</i> | 0.46 | 0.65 | 2.44 | 4.06 |
| <i>Meganyctiphanes norvegica</i> | 3.41 | 2.61 | 11.59 | 3 | <i>Stomias boa</i> | 0.46 | 0.65 | 2.44 | 3.95 |
| | | | | | Osteichthyes und | 22.90 | 8.96 | 34.76 | – |

Fig. 2). The largest individuals (length class: 36–55 cm) consume a broad range of different prey items.

In Fig. 3, the frequency of occurrence (%FO) is plotted against prey-specific abundance (%Vol) and subdivided into length classes (15–25 cm, 26–35 cm, 36–55 cm), based on the Costello graphical method (Costello, 1990) modified by Amundsen et al. (1996). The majority of the prey points are depicted at the lower left corner of the diagrams or near the y-axis, indicating that many preys were consumed at low frequency and abundance. Five taxa of prey have been identified in the smallest size class; two out of these 5 groups (Myctophidae and Chlorophthalmidae) occupy the upper portion of the y-axis. As shown in Fig. 3, the first group (Myctophidae) consists of prey with a high specific abundance and occurrence, while the second group (Chlorophthalmidae) includes prey with a low occurrence and high abundance (upper left). A total of seven groups of prey are found in the size class 26–35 cm,

which occupied the lower middle part of the x and y axes. Prey groups raise to nineteen in the largest size class, located at the lower portion of the axes.

In the CA plot, the first two axes accounted for 48.85% of the variance (Fig. 4). The positive portion of axis I and II (I quadrant) condensed only a small portion of prey, including two groups of crustaceans (Processidae and Hyperiidae), and two fish (Merlucciidae and Myctophidae). A large number of individuals and prey were located in IV quadrant. The groups Histioteuthidae, Penaeidae, and Chlorophthalmidae occupied the regions between the II and III quadrants. Convex hulls were plotted and coloured according to depth, size, and sex. Preys in the stomach contents differed significantly according to length class (pseudo- $F = 4.64$; $p < 0.01$) and depth distribution (pseudo- $F = 2.73$; $p < 0.02$). The results of the PERMANOVA did not reveal differences between sexes (Table 3).

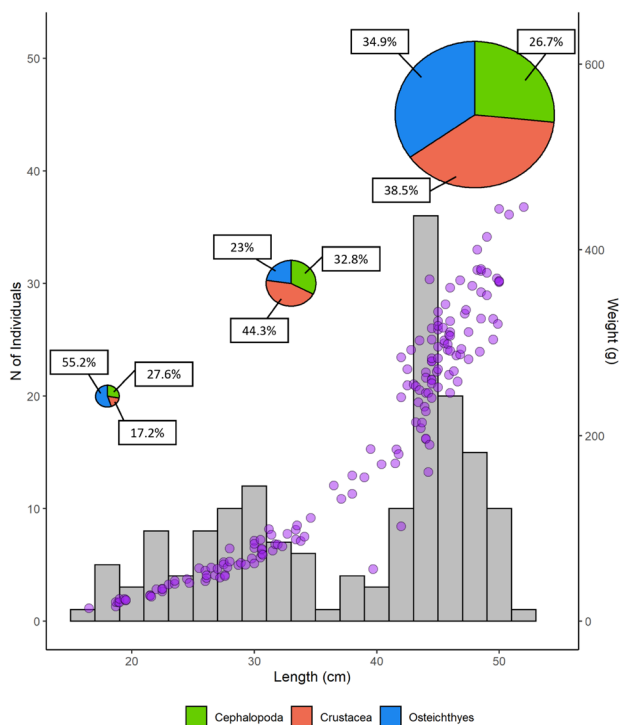


Fig. 2 Frequency distribution (grey) and length–weight relationship (purple) of *Galeus melastomus* collected in the central Tyrrhenian Sea. Pie charts indicate the percentage of prey species (%FO) present in individuals' stomach contents, and they are sized based on the number of prey species present in each length class (15–25 cm, 26–35 cm, 36–55 cm)

Concerning plastics, the FT-IR analysis revealed the polymeric nature of all isolated plastic particles (20 particles), corresponding to Polyethylene (PE: 50%), Polypropylene (PP: 25%), Polyamide (PA: 12.5%), and Polystyrene (PS: 12.5%). Plastics were found in the stomach contents of 33 individuals, with a percentage of occurrence of about 20%. Individuals of *G. melastomus* ingested 47 plastics in total, ranging from 1 to 11 items, with a mean of 1.47 ± 0.28 (\pm SD) (Fig. 5). Plastic size class between 1 and 5 mm was the most abundant (44.7%) and included all shape categories. The most abundant plastic-shaped category was filaments (53.2%), followed by fragments (25.5%), films (17%), and spheres (4.3%) (Fig. 5). Most plastic items were transparent (59.6%), then black (17%), white (14.9%), green (4.3%), blue (2.1%), and red (2.1%).

The analysis of the frequency of occurrence of plastic items by shape, size, and according to sex, size, distance from the coast, and depth reveals that transparent filament is the most common ingested item, ($N=14$), followed by transparent films ($N=9$), black filament ($N=8$), transparent fragments ($N=5$), and white spheres ($N=2$). The largest amount of plastic was found in fish that were caught within the buffer of 10–15 nautical miles from the coast, in the

depth stratum between 450 and 650 m, in the length class of 36–55 cm, and in female (Fig. 5).

The GAM model selection returned as best model the following relationship:

$\text{Num of Items} \sim s(\text{Distance}) + s(\text{TrophicLevel}) + s(\text{Fullness}) + s(\text{L1n}) + s(\text{L1w})$.

where Distance is the distance from the coast of the haul, Trophic level is the weighted mean of the trophic level of each prey (Table 2). Fullness is the degree of stomach fullness, which could be important to consider that empty stomachs could contain neither food nor plastic, and L1n and L1w are the amounts of MaP in number of items (n) and weight (w).

This model allowed explaining as much as 53.7% of the total variance in the data, and it fits adequately the pattern in the input data (Fig. 6). Distance from the coast and amount of MaP litter as weight was significantly related to the dependent variable, but with opposite effects (Fig. 6B–D–E). In particular, the former was associated with a decreasing and monotonic (almost linear) effect on the number of ingested plastics, while the latter was associated with an increasing and monotonic effect. The other predictors, although retained in the model, were not significant.

Discussion

The diet analysis of *G. melastomus* confirmed that several mesopelagic and bathypelagic species belonging to fish, cephalopods and crustaceans, provide the primary food source for this species, and contributed to filling the knowledge gap highlighted by D'Iglio et al. (2021) for the central Tyrrhenian Sea. Food habits of blackmouth catshark revealed changes during its ontogenetic development, with an increasing diversity along size. Due to this, the diet of small and young individuals mainly consisted of fish, whereas the diet of intermediate-sized individuals (26–35 cm) mostly included decapod crustaceans. The diet of large individuals resulted in a more balanced composition with similar proportions of crustaceans, cephalopods, and fish.

The diet of *G. melastomus* exhibited a high diversity in species composition, since it mainly included bathypelagic (Myctophidae) and demersal (Chlorophthalmidae) fish in the smaller individuals. Prey diversity increased in the individual of intermediate size, and additionally included demersal crustaceans (Penaeidae) and cephalopods (Sepiolidae), together with pelagic Euphausiidae and Sergestidae. The most diversified diet was observed in adult individuals, and comprised demersal crustaceans (e.g. Penaeidae, Aristeidae, Polychelidae), as well as pelagic crustaceans (e.g. Euphausiidae, Pasiphaeidae, Sergestidae and Hyperiididae amphipods), which may have been captured during their

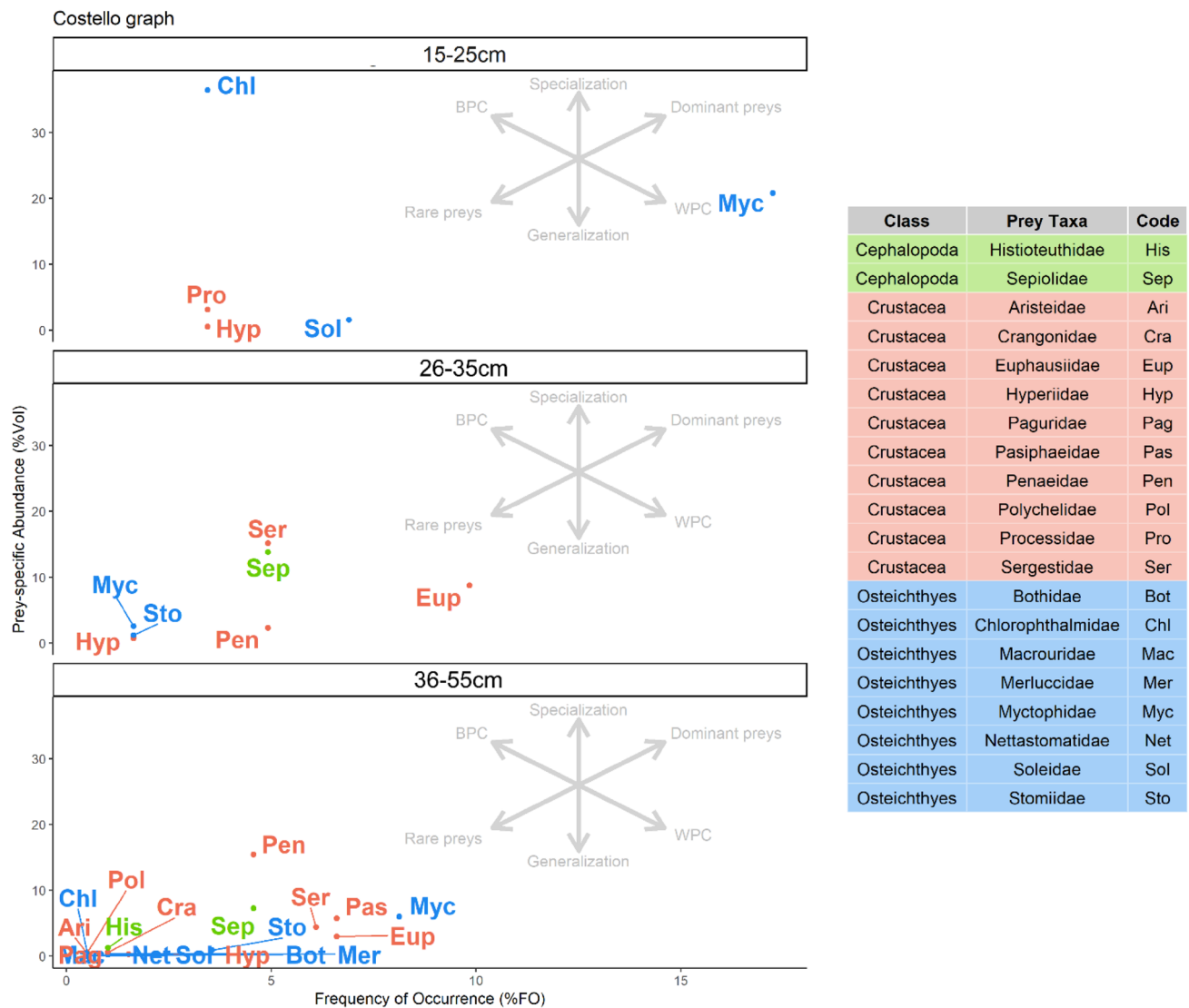


Fig. 3 *Galeus melastomus* collected in the central Tyrrhenian Sea: frequency of occurrence (%FO) was plotted against prey-specific abundance (%Vol) and subdivided into length classes (15–25 cm, 26–35 cm, 36–55 cm), based on the Costello graphical method (Cos-

tello 1990) modified by Amundsen et al. (1996) (BPC between phenotype component, WPC within phenotype component). Preys are subdivided into three groups (Cephalopoda, Crustacea, and Osteichthyes)

daily migrations in mid-water (Onsrud and Kaartvedt 1998; Elder and Seibel 2014). Moreover, adult individuals prey on many bathypelagic (Stomiidae, Myctophidae) and demersal fish (e.g. Merlucciidae, Macrouridae, Soleidae, Bothidae). Finally, cephalopods included both bathypelagic (*Histioteuthis bonnellii*) and demersal species (*Rossia macrosoma* and *Heterotheutis dispar*), as well as they are an important food source for other bathyal selachians (Bello 1997; Rey et al. 2005; Fanelli et al. 2009; Valls et al. 2011; Darna et al. 2019; D'Iglio et al. 2021).

The presence of typically benthic preys, such as fish of the families Bothidae and Soleidae, as well as the crustaceans of the family Paguridae, indicate that *G. melastomus* is

a benthic feeder and scavenger, as reported by other authors (Anastasopoulou et al. 2013; Barría et al. 2018). In addition, the presence of bathypelagic species highlighted that *G. melastomus* behaves as a supra-benthic predator capable of moving from the bottom to catch prey in the bathypelagic environment, confirming the behaviour previously reported for *G. melastomus* in other areas of the Tyrrhenian Sea (D'Iglio et al. 2021; Ricci et al. 2021).

Small individuals were the only ones that displayed preys with a high specific abundance and occurrence, as the Costello model revealed, and such evidence is an indication of their specialization. In fact, preys with a low specific abundance and presence were only occasionally consumed by

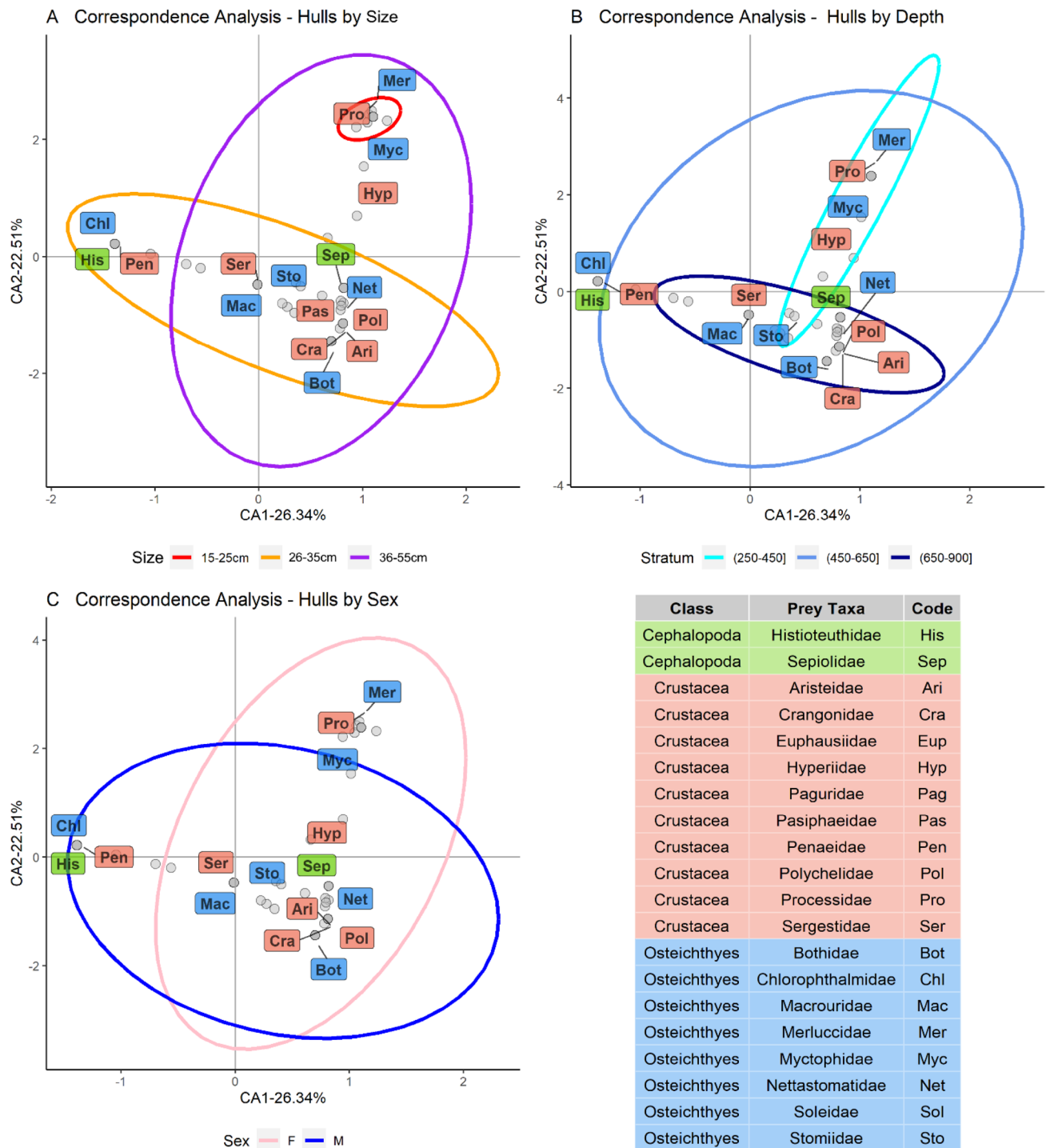


Fig. 4 *Galeus melastomus* collected in the central Tyrrhenian Sea: Correspondence analysis (CA) graphically inspect the variation in diet and relate the preference for different food items based on size

(15–25 cm, 26–35 cm, 36–55 cm) (A), depth (B), and sex (Female: F; Male: M) (C). Preys are subdivided into three groups (Cephalopoda, Crustacea, and Osteichthyes)

a few individuals. In contrast, individuals of intermediate and large size did not display a close trophic relationship with specific prey species, since no dominant species were found in their diet. This result suggests that, for most of its

life cycle, blackmouth catshark has a generalist behaviour and, accordingly to the prey ecological habits, the results confirmed that it actively catches preys on the bottom, as well as in the supra-benthic layer, feeding on all available

Table 3 Results from non-parametric multivariate PERmutational ANalysis of VAriance (PERMANOVA) applied to *Galeus melastomus* diet data as prey volume abundance per food items by depth, size, and sex

| PERMANOVA | SumOfSqs | R2 | pseudo- <i>F</i> | Pr(> <i>F</i>) |
|-----------|----------|--------|------------------|-----------------|
| Depth | 1.0899 | 0.0198 | 2.7303 | 0.002* |
| Length | 1.8542 | 0.0338 | 4.6450 | 0.001* |
| Sex | 0.3629 | 0.0066 | 0.9092 | 0.567 |

* Indicates significant *p* values

preys, as also reported by other authors (Anastasopoulou et al. 2013; Barria et al. 2018; D'Iglio et al. 2021).

Further differences in diet related to depth distribution and size are also revealed by the CA analysis and were consistent with the behaviour of both preys and predator. Based on the prey composition of the stomach contents, the differences among the size groups were confirmed and could be explained by the vertical movement of blackmouth catshark. Indeed, the dynamics of the species suggest that younger individuals move through the water column towards surface waters. Specifically, the smaller blackmouth catshark are more active near the continental plateau (250–450 m depth), while the adult individuals are found at depths between 450 and 900 m. Our results are also in agreement with other studies which highlighted variations in the blackmouth catshark habits and composition of their preys during their growth in relation to the availability of the resources (Carrassón et al. 1992; Olaso et al. 2005; Fanelli et al. 2009).

Our study allowed to show that blackmouth catshark ingest a wide variety of plastics in terms of shape, colour, and size, which are in a clearly higher proportion than in the study of Carrassón et al. (1992). Particularly, there was a high proportion of microplastics (1–5 mm), and transparent filaments and films were the most abundant particles found in the samples. Films and filaments are the most abundant plastic particles in seawater and sediments (Gago et al. 2018). In areas densely populated such as near Rome, the sources of filaments might be more abundant, also for the presence of Tiber River mouth, which discharge in the Tyrrhenian Sea pollutant like plastic litter (Crosti et al. 2018). The transport of filaments can also accumulate in deep areas, as a consequence of their greater sinking capacity if compared to spheres and fragments (Chubarenko et al. 2016). Conversely, low-density particles (polystyrene spheres found in the samples) tend to float (Hidalgo-Ruz et al. 2012), but they can even sink after biofouling. Therefore, this can change the weight of the specific particle, making it easier to detect them within deep-sea sediments (Eriksen et al. 2014; Alomar and Deudero 2017; Valente et al. 2019). Finally, several polymers of polyamide have been found in the stomach contents of *G. melastomus*. As this polymer is the main component of the nylon used in the ropes and

fishing nets (Deopura et al. 2008), the wastes from fishing gears appeared a considerable cause of plastic pollution in the Tyrrhenian Sea, in line with other studies in deep-sea areas (Pruter 1987; Murray and Cowie 2011; Lusher et al. 2013; Neves et al. 2015; Güven et al. 2017; Welden and Cowie 2017).

In summary, significant sources of plastic pollution were identified through the GAM model, which was used to disentangle the role of different factors in the ingestion of plastic by *G. melastomus*. Based on this, two predictors were identified as major contributors affecting the number of plastic items ingested. Indeed, out of all the potential sources of variability considered (i.e. fish size, sex, depth of capture, distance from the coast, short-term trophic level, stomach fullness, and amount of MaP in terms of the number of items and total weight), only the distance from the coast and the total weight of MaP on the seafloor significantly affect the number of plastic items ingested by *G. melastomus*. The decreasing amount of plastics associated with the distance from the coast could be interpreted as the move away from the source of pollution. This variable was one of the major factors that negatively affect the amount of waste on the seabed along the coast (Coll et al. 2012; Steer et al. 2017; Sbrana et al. 2020; Franceschini et al. 2021). Accordingly, the coast of the Tyrrhenian Sea (GSA9) hosts a series of fishing grounds along a narrowed shelf that receives plastic waste through some important sources including the rivers Tiber and Arno (Inghilesi et al. 2008; Ludwig et al. 2009; Montuori et al. 2016; Crosti et al. 2018).

Similarly, the ingestion by *G. melastomus* is positively correlated with the amount of MaP present on the bottom. This second factor deserves an additional reflection since, in this study, the amount of MaP was associated with the ingestion of smaller particles and not directly associated to the MaP. It is well known that plastic waste at sea is undergoing a process of fragmentation and miniaturization, so it is logical to expect that large quantities of MaP can generate corresponding quantities of MeP and MiP (Crawford and Quinn 2017; Chamas et al. 2020). Similar studies have already identified positive relationships between MiP ingestion and MaP hotspots at the sea bottom (Alomar et al. 2020; Franceschini et al. 2021). Particles, however, increase their ability to be transported as they become smaller (Zhang 2017), and thus oceanographic factors can greatly affect the spread and accumulation of different sizes of plastic particles. In addition, waste is stored in deposition centres (low-hydrodynamic areas). Finally, trawling contributes to the resuspension of litter on the bottom, slowing down plastic deposition. Leaving aside the oceanographic dynamics of plastic pollutants, the biomonitoring of their abundance and distribution as revealed by the analysis of stomach contents in non-commercial species, such as the blackmouth catshark,

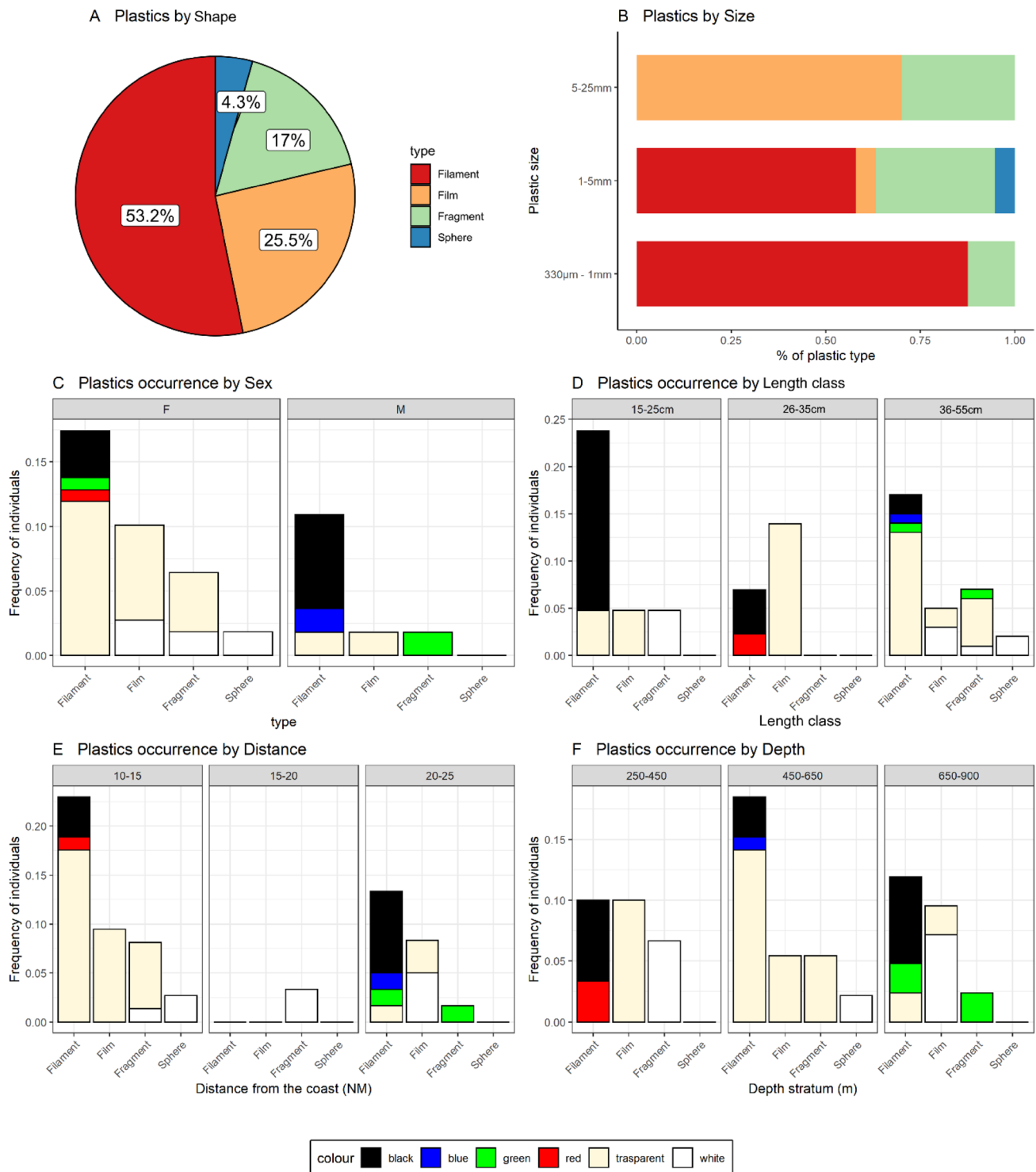


Fig. 5 Characterization of plastics found in *G. melastomus* stomach contents in the central Tyrrhenian Sea. **A** Pie chart by plastic-shape; **B** histograms by plastic size; **C** plastic occurrence by sex (Female: F;

Male: M); **D** by length class (15–25 cm, 26–35 cm, 36–55 cm); **E** by distance from the coast; **F** and depth strata, subdivided into colours

could represent an important approach to assessing the risk of contamination of fisheries landings of commercial species. The results of this analysis did not reveal any

adverse effects on shark health, although we did not check the volume occupied by plastics in the stomach contents. However, it is still difficult to determine what are the real

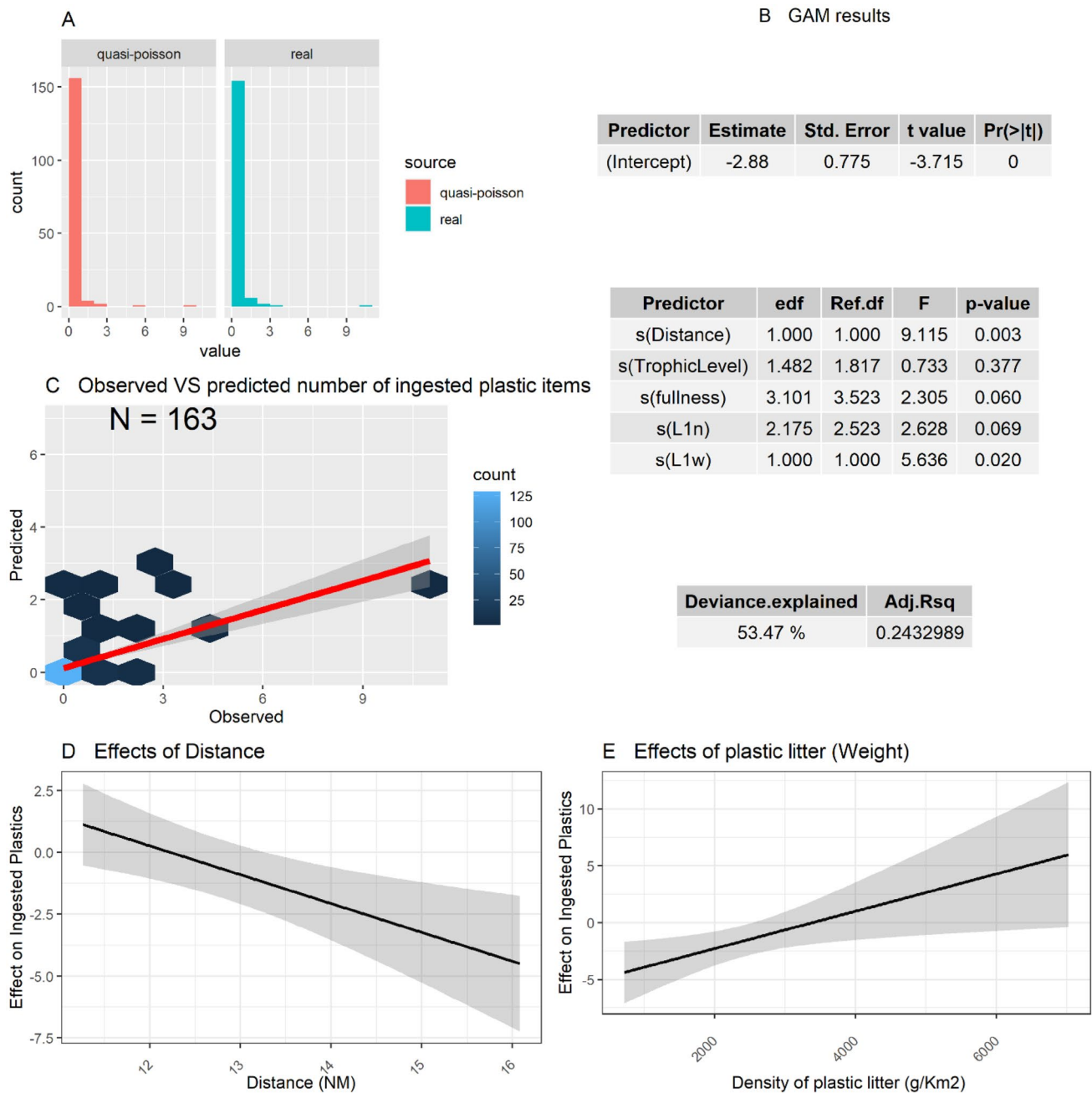


Fig. 6 Summary of results of the best-fit Generalized Additive Model (GAM) used to evaluate whether different factors including fish biometric parameters (fullness), the weighted mean of the trophic level of each prey, characteristics of the sampling sites (depth and distance from the coast) and the amount of macroplastics on the seafloor (number and weight of plastic items) explain variations in the frequency of plastics ingested by *G. melastomus* collected in the central Tyrrhenian Sea. **A** Comparison between theoretical (Quasi-Poisson

distribution) and observed distribution of plastic ingestion (Number of items per individual of *G. melastomus*); **B** Tables of GAM results; **C** Observed versus GAM predicted values of plastic ingestion (Number of items per individual of *G. melastomus*); **D, E** The effects of the significant predictors, independent of the other predictors represented as response variable shape. The degree of smoothing is indicated in the y-axis label. Confidence intervals (95%) around the response curve are represented in grey

threats to a species that ingest plastic. In this way, it would be useful to further research using also an ecotoxicological perspective. Moreover, a future study could examine whether the pattern returned by the blackmouth catshark

could serve as a proxy for those of other species, including key resources for fisheries, given that the samples collected during this study were taken over important fishing grounds (Russo et al. 2018).

In conclusion, this study provides a contribution to knowledge on trophic ecology and on the contamination of the diet by plastic. Several novel insights have been gained into the feeding ecology of *G. melastomus* in the central Tyrrhenian Sea, which is an area where this predator is very abundant and commonly caught as a by catch in bottom trawl fisheries, but adequate information is lacking. The dietary approach, which begins with a description of the organism's feeding habits, allows further exploration of plastic ingestion with great potential and versatility for most biological or ecological studies (Baker et al. 2014; Mahesh et al. 2019). Measurement of instantaneous trophic levels should be further investigated, even though the results are not significant. In our study the estimates for the trophic level were assigned based on FishBase or SeaLifeBase. These estimates were derived from a number of food items using a randomized resampling routine. However, if we consider some relevant dataset on Stable Isotopes Analysis (SIA) for deep-sea species in the Mediterranean Sea, the trophic levels of benthos feeders adopted in this study are likely to be underestimated. We are aware that stable isotope allows us to estimate trophic levels more accurately and would be fundamental to deepen this topic. Unfortunately, the isotopic values (especially $\delta^{15}\text{N}$) for some species are not recorded, while for other species the values are not available for the Central Tyrrhenian Sea. The opportunistic feeding behaviour of *G. melastomus* affects the incidental ingestions of numerous plastic particles likely confused for other preys, or indirectly ingested by feeding, in line with the results of previous research (Anastasopoulou et al. 2013; Cartes et al. 2016; Alomar and Deudero 2017; Valente et al. 2019).

It is widely acknowledged that the use of a single bioindicator species for monitoring plastic ingestion cannot be used to all European marine waters, even in areas with very different characteristics and levels of plastic pollution. Instead, it is recommended to use specific bioindicators based on habitat type and spatial distribution (Fossi et al. 2018). For instance, some crustaceans such as *Nephrops norvegicus* (in the Sea of Sardinia) and *Aristeus antennatus* (around the Balearic Islands) are considered effective indicators of the presence and impact of microlitter (mainly microplastics) in the Mediterranean deep sea (Carreras-Colom et al. 2018; Cau et al. 2019). Additionally, individuals of different sizes could be exposed to particles of different sizes (Worm et al. 2017). In this way, bioindicator species should be carefully selected according to the spatial domain being studied. Given this, and considering the generalist behaviour of blackmouth catshark, its abundance and distribution, and interaction with plastic hotspots, we consider, in line with Fossi et al. (2018), this species as a suitable candidate for developing a monitoring programme for the presence of plastics on the seabed, as requested in the Marine Strategy Framework Directive for European waters.

Author contributions Conception and design were performed by AS and TR; Material preparation were made by: AS, AL, MM, PS, MS, and CV; data collection and analysis were performed by AS, AC, DC, TG, MFG, SF, GM, AP, US, TV, TR. TR supervised the final manuscript. The first draft of the manuscript was written by: AS, TR, MFG and all authors commented on previous versions of the manuscript. All authors read and approved the final manuscript.

Funding Open access funding provided by Università degli Studi di Roma Tor Vergata within the CRUI-CARE Agreement. The authors declare that no funds, grants, or other support were received during the preparation of this manuscript.

Data availability The datasets generated during and analysed during the current study are available from the corresponding author on reasonable request.

Declarations

Competing Interests The authors have no relevant financial or non-financial interests to disclose.

Ethical approval All applicable international, national, and/or institutional guidelines for the care and use of animals were followed.

Open Access This article is licensed under a Creative Commons Attribution 4.0 International License, which permits use, sharing, adaptation, distribution and reproduction in any medium or format, as long as you give appropriate credit to the original author(s) and the source, provide a link to the Creative Commons licence, and indicate if changes were made. The images or other third party material in this article are included in the article's Creative Commons licence, unless indicated otherwise in a credit line to the material. If material is not included in the article's Creative Commons licence and your intended use is not permitted by statutory regulation or exceeds the permitted use, you will need to obtain permission directly from the copyright holder. To view a copy of this licence, visit <http://creativecommons.org/licenses/by/4.0/>.

References

- Akaike H (1974) A New Look at the Statistical Model Identification. *IEEE Trans Automat Contr* 19:215–222. https://doi.org/10.1007/978-1-4612-1694-0_16
- Alomar C, Deudero S (2017) Evidence of microplastic ingestion in the shark *Galeus melastomus* Rafinesque, 1810 in the continental shelf off the western Mediterranean Sea. *Environ Pollut* 223:223–229. <https://doi.org/10.1016/J.ENVPOL.2017.01.015>
- Alomar C, Deudero S, Compa M, Guijarro B (2020) Exploring the relation between plastic ingestion in species and its presence in seafloor bottoms. *Mar Pollut Bull* 160:111641. <https://doi.org/10.1016/J.MARPOLBUL.2020.111641>
- Alves LMF, Nunes M, Marchand P, Le Bizet B, Mendes S, Correia JPS, Lemos MFL, Novais SC (2016) Blue sharks (*Prionace glauca*) as bioindicators of pollution and health in the Atlantic Ocean: contamination levels and biochemical stress responses. *Sci Total Environ* 563–564:282–292. <https://doi.org/10.1016/J.SCITOTENV.2016.04.085>
- Amundsen PA, Gabler HM, Staldvik FJ (1996) A new approach to graphical analysis of feeding strategy from stomach contents data—modification of the Costello (1990) method. *J Fish Biol* 48:607–614. <https://doi.org/10.1111/j.1095-8649.1996.tb01455.x>

- Anastasopoulou A, Mytilineou C, Smith CJ, Papadopoulou KN (2013) Plastic debris ingested by deep-water fish of the Ionian Sea (Eastern Mediterranean). *Deep Res Part I Oceanogr Res Pap* 74:11–13. <https://doi.org/10.1016/j.dsr.2012.12.008>
- Ardizzone G, Belluscio A, Criscoli A (2018) Atlante degli habitat dei fondali marini del Lazio. Sapienza Università, Rome
- Baker R, Buckland A, Sheaves M (2014) Fish gut content analysis: robust measures of diet composition. *Fish Fish* 15:170–177. <https://doi.org/10.1111/faf.12026>
- Barría C, Navarro J, Coll M (2018) Feeding habits of four sympatric sharks in two deep-water fishery areas of the western Mediterranean Sea. *Deep Sea Res Part I Oceanogr Res Pap* 142:34–43. <https://doi.org/10.1016/J.DSR.2018.09.010>
- Bello G (1997) Cephalopods from the stomach contents of demersal chondrichthyan caught in the Adriatic Sea. *Vie Milieu* 47:221–227
- Bergmann M, Gutow L, Klages M (2015) Marine anthropogenic litter. Springer, Cham. <https://doi.org/10.1007/978-3-319-16510-3>
- Bernardini I, Garibaldi F, Canesi L, Fossi MC, Baini M (2018) First data on plastic ingestion by blue sharks (*Prionace glauca*) from the Ligurian Sea (North-Western Mediterranean Sea). *Mar Pollut Bull* 135:303–310. <https://doi.org/10.1016/J.MARPOLBUL.2018.07.022>
- Boucher J, Billard G (2020) The Mediterranean: mare plasticum. IUCN, Gland, Switzerland
- Boucher J, Billard G, Simeone E, Sousa J (2020) The marine plastic footprint. IUCN, Gland, Switzerland
- Bradai MN, Saidi B, Enajjar S (2012) Elasmobranchs of the Mediterranean and Black Sea: status, ecology and biology bibliographic analysis. Food and Agriculture Organization of the United Nations, Rome
- Burnham KP, Anderson DR (2007) Information and likelihood theory: a basis for model selection and inference. Springer, New York
- Camedda A, Marra S, Matiddi M, Massaro G, Coppa S, Perilli A, Ruiu A, Briguglio P, de Lucia GA (2014) Interaction between loggerhead sea turtles (*Caretta caretta*) and marine litter in Sardinia (Western Mediterranean Sea). *Mar Environ Res* 100:25–32. <https://doi.org/10.1016/j.marenvres.2013.12.004>
- Camhi MD, Fowler SL, Musick JA, Bräutigam A, Fordham S V, Brautigam A (1998) Sharks and their relatives: ecology and conservation. IUCN/SSC Shark Specialist Group. IUCN, Gland, Switzerland and Cambridge, UK.
- Capone A, Petrillo M, Misic C (2020) Ingestion and elimination of anthropogenic fibres and microplastic fragments by the European anchovy (*Engraulis encrasicolus*) of the NW Mediterranean Sea. *Mar Biol* 167:166. <https://doi.org/10.1007/s00227-020-03779-7>
- Cardozo ALP, Farias EGG, Rodrigues-Filho JL, Moteiro IB, Scandolo TM, Dantas DV (2018) Feeding ecology and ingestion of plastic fragments by *Priacanthus arenatus*: what's the fisheries contribution to the problem? *Mar Pollut Bull* 130:19–27. <https://doi.org/10.1016/j.marpolbul.2018.03.010>
- Carrassón M, Stefanescu C, Cartes JE (1992) Diets and bathymetric distributions of two bathyal sharks of the Catalan deep sea (western Mediterranean). *Mar Ecol Prog Ser* 82:21–30. <https://doi.org/10.3354/meps082021>
- Carreras-Colom E, Constenla M, Soler-Membrives A, Cartes JE, Baeza M, Padrós F, Carrassón M (2018) Spatial occurrence and effects of microplastic ingestion on the deep-water shrimp *Aristeus antennatus*. *Mar Pollut Bull* 133:44–52. <https://doi.org/10.1016/j.marpolbul.2018.05.012>
- Cartes JE, Soler-Membrives A, Stefanescu C, Lombarte A, Carrassón M (2016) Contributions of allochthonous inputs of food to the diets of benthopelagic fish over the northwest Mediterranean slope (to 2300 m). *Deep Sea Res Part I Oceanogr Res Pap* 109:123–136. <https://doi.org/10.1016/J.DSR.2015.11.001>
- Cau A, Avio CG, Dessì C, Follesa MC, Moccia D, Regoli F, Pusceddu A, Giacomo C, Dessì C, Cristina M, Moccia D, Regoli F, Pusceddu A, Avio CG, Dessì C, Follesa MC, Moccia D, Regoli F, Pusceddu A (2019) Microplastics in the crustaceans *Nephrops norvegicus* and *Aristeus antennatus*: flagship species for deep-sea environments? *Environ Pollut* 255:113107. <https://doi.org/10.1016/j.envpol.2019.113107>
- Cau A, Avio CG, Dess C, Moccia D, Pusceddu A, Regoli F, Cannas R, Follesa MC (2020) Benthic crustacean digestion can modulate the environmental fate of microplastics in the deep sea. *Environ Sci Technol*. <https://doi.org/10.1021/acs.est.9b07705>
- Chamas A, Moon H, Zheng J, Qiu Y, Tabassum T, Hee Jang J, Abu-Omar M, Scott SL, Suh S (2020) Degradation rates of plastics in the environment. *Sustain Chem Eng* 8:3511. <https://doi.org/10.1021/acssuschemeng.9b06635>
- Chubarenko I, Bagaev A, Zobkov M, Esiukova E (2016) On some physical and dynamical properties of microplastic particles in marine environment. *Mar Pollut Bull* 108:105–112. <https://doi.org/10.1016/j.marpolbul.2016.04.048>
- Clarke MR (1986) A handbook for the identification of cephalopod beaks. Oxford, Clarendon, United Kingdom
- Coll M, Piroddi C, Albouy C, Ben Rais Lasram F, Cheung WWL, Christensen V, Karpouzi VS, Guilhaumon F, Mouillot D, Paletzny M, Palomares ML, Steenbeek J, Trujillo P, Watson R, Pauly D (2012) The Mediterranean Sea under siege: spatial overlap between marine biodiversity, cumulative threats and marine reserves. *Glob Ecol Biogeogr* 21:465–480. <https://doi.org/10.1111/j.1466-8238.2011.00697.x>
- Cortés E (1999) Standardized diet compositions and trophic levels of sharks. *ICES J Mar Sci* 56:707–717. <https://doi.org/10.1006/jmsc.1999.0489>
- Costello MJ (1990) Predator feeding strategy and prey importance: a new graphical analysis. *J Fish Biol* 36:261–263. <https://doi.org/10.1111/J.1095-8649.1990.TB05601.X>
- Cózar A, Sanz-Martín M, Martí E, González-Gordillo JI, Ubeda B, Ágálvez J, Irigoien X, Duarte CM (2015) Plastic accumulation in the Mediterranean Sea. *PLoS One* 10:1–12. <https://doi.org/10.1371/journal.pone.0121762>
- Crawford CB, Quinn B (2017) Physicochemical properties and degradation. *Microplastic Pollut*. <https://doi.org/10.1016/B978-0-12-809406-8.00004-9>
- Crosti R, Arcangeli A, Campana I, Paraboschi M, González-Fernández D (2018) ‘Down to the river’: amount, composition, and economic sector of litter entering the marine compartment, through the Tiber River in the western Mediterranean Sea. *Rend Lincei* 29:859–866. <https://doi.org/10.1007/s12210-018-0747-y>
- D’Iglio C, Albano M, Tiralongo F, Famulari S, Rinelli P, Savoca S, Spanò N, Capillo G (2021) Biological and ecological aspects of the blackmouth catshark (*Galeus melastomus* rafinesque, 1810) in the southern Tyrrhenian Sea. *J Mar Sci Eng*. 9:967. <https://doi.org/10.3390/jmse9090967>
- D’Iglio C, Savoca S, Rinelli P, Spanò N, Capillo G (2021) Diet of the deep-sea shark *Galeus melastomus* Rafinesque, 1810, in the Mediterranean Sea: what we know and what we should know. *Sustain* 13:3962. <https://doi.org/10.3390/SU13073962>
- Darna SA, Amina A, Bendib T, Mouffok S, Belmahi A (1810) Bouderbala M (2019) observation on distribution, biology, growth, diet and feeding strategy of blackmouth catshark *Galeus melastomus* (Rafinesque, 1810) (Chondrichthyes Scyliorhinidae) in Western Algerian coast. *Biodiv J*. 9:357–368. <https://doi.org/10.31396/Biodiv.Jour.2018.9.4.357.368>
- Deopura BL, Alagirusamy R, Joshi M, Gupta B (2008) Polyesters and polyamides. Woodhead, England
- Domènech F, Aznar FJ, Raga JA, Tomás J (2019) Two decades of monitoring in marine debris ingestion in loggerhead sea turtle,

- Caretta caretta*, from the western Mediterranean. Environ Pollut 244:367–378. <https://doi.org/10.1016/j.envpol.2018.10.047>
- Elder LE, Seibel BA (2014) Ecophysiological implications of vertical migration into oxygen minimum zones for the hyperiid amphipod *Phronima sedentaria*. J Plankton Res 37:897–911. <https://doi.org/10.1093/plankt/fbv066>
- Eriksen M, Lebreton LCM, Carson HS, Thiel M, Moore CJ, Borroero JC, Galgani F, Ryan PG, Reisser J (2014) Plastic pollution in the world's oceans: more than 5 trillion plastic pieces weighing over 250,000 tons Afloat at Sea. PLoS ONE 9:1–15. <https://doi.org/10.1371/journal.pone.0111913>
- Falciai L, Minervini R (1992) Guida dei Crostacei Decapodi d'Europa. F. Muzzio, Padova.
- Fanelli E, Rey J, Torres P, De SLG (2009) Feeding habits of black-mouth catshark *Galeus melastomus* (Rafinesque, 1810) and velvet belly lantern shark *Etmopterus spinax* (Linnaeus, 1758) in the western Mediterranean. J Appl Ichthyol 25:83–93. <https://doi.org/10.1111/j.1439-0426.2008.01112.x>
- Fiorentino F, Lefkaditou E, Jadaud A, Carbonara PL, Lembo G, Galgani F, Th (2013) XVII Protocol for monitoring Marine Litter on a voluntary basis. In: MEDITS-Handbook-Instruction Manual (9), pp 99–103.
- Flint S, Markle T, Thompson S, Wallace E (2012) Bisphenol A exposure, effects, and policy: a wildlife perspective. J Environ Manage 104:19–34. <https://doi.org/10.1016/j.jenvman.2012.03.021>
- Follesa MC, Carbonara P (2019) Atlas on the maturity stages of Mediterranean fishery resources. Stud Rev 99:1–259
- Fossi MC, Pedà C, Compà M, Tsangaris C, Alomar C, Claro F, Ioakeimidis C, Galgani F, Hema T, Deudero S, Romeo T, Battaglia P, Andaloro F, Caliani I, Casini S, Panti C, Baini M (2018) Bioindicators for monitoring marine litter ingestion and its impacts on Mediterranean biodiversity. Environ Pollut 237:1023–1040. <https://doi.org/10.1016/j.envpol.2017.11.019>
- Franceschini S, Mattei F, D'Andrea L, Di Nardi A, Fiorentino F, Garofalo G, Scardi M, Cataudella S, Russo T (2019) Rummaging through the bin: modelling marine litter distribution using artificial neural networks. Mar Pollut Bull 149:110580. <https://doi.org/10.1016/j.marpolbul.2019.110580>
- Franceschini S, Cau A, D'Andrea L, Follesa MC, Russo T, Andrea LD, Follesa MC, Russo T (2021) Eating near the dump: identification of nearby plastic hotspot as a proxy for potential microplastic contamination in the norwegian lobster (*Nephrops norvegicus*). Front Mar Sci. <https://doi.org/10.3389/FMARS.2021.682616>
- Gago J, Carretero O, Filgueiras AV, Viñas L (2018) Synthetic microfibers in the marine environment: a review on their occurrence in seawater and sediments. Mar Pollut Bull 127:365–376. <https://doi.org/10.1016/J.MARPOLBUL.2017.11.070>
- Galgani F (2015) Marine litter, future prospects for research. Front Mar Sci 2:1–5. <https://doi.org/10.3389/fmars.2015.00087>
- Galgani F, Hanke G, Werner S, Oosterbaan L, Nilsson P, Fleet D, Kinsey S, Thompson RC, van Franeker J, Vlachogianni T, Scoullas M, Veiga JM, Palatinus A, Matiddi M, Maes T, Korpinen S, Budziak A, Leslie H, Gago J, Liebezeit G (2013) Guidance on monitoring of marine litter in European seas. MSFD Technical Subgroup on Marine Litter (TSG- ML). JRC Technical Report. European Commission, Joint Research Centre. EUR83985.
- GESAMP Joint Group of Experts on the Scientific Aspects of Marine Pollution (2019). Guidelines for the Monitoring and Assessment of Plastic Litter in the Ocean - GESAMP Reports and Studies No. 99. <https://wedocs.unep.org/20.500.11822/30009>.
- Geyer R, Jambeck JR, Law KL (2017) Production, use, and fate of all plastics ever made. Sci Adv 3:e1700782. https://doi.org/10.1126/SCIADV.1700782/SUPPL_FILE/1700782_SM.PDF
- Güven O, Gökdağ K, Jovanović B, Kıdeys AE (2017) Microplastic litter composition of the Turkish territorial waters of the Mediterranean Sea, and its occurrence in the gastrointestinal tract of fish. Environ Pollut 223:286–294. <https://doi.org/10.1016/j.envpol.2017.01.025>
- Hermesen E, Mintenig SM, Besseling E, Koelmans AA (2018) Quality criteria for the analysis of microplastic in biota samples: a critical review. Environ Sci Technol 52:10230–10240. <https://doi.org/10.1021/acs.est.8b01611>
- Hidalgo-Ruz V, Gutow L, Thompson RC, Thiel M (2012) Microplastics in the marine environment: a review of the methods used for identification and quantification. Environ Sci Technol 46:3060–3075. <https://doi.org/10.1021/es2031505>
- Hurley R, Woodward J, Rothwell JJ (2018) Microplastic contamination of riverbeds significantly reduced by catchment-wide flooding. Nat Geosci 11:251–257. <https://doi.org/10.1038/s41561-018-0080-1>
- Inghilesi R, Ottolenghi L, Orasi A, Pizzi C, Bignami F, Santoleri R (2008) Fate of river Tiber discharge investigated through numerical simulation and satellite monitoring. Ocean Sci 8:19. <https://doi.org/10.5194/os-8-773-2012>
- Kumar R, Verma A, Shome A, Sinha R, Sinha S, Jha PK, Kumar R, Kumar P, Shubham DS, Sharma P, Prasad PVV (2021) Impacts of plastic pollution on ecosystem services, sustainable development goals, and need to focus on circular economy and policy interventions. Sustain 13:9963. <https://doi.org/10.3390/SU13179963>
- Leathwick JR, Elith J, Hastie T (2006) Comparative performance of generalized additive models and multivariate adaptive regression splines for statistical modelling of species distributions. Ecol Modell 199:188–196. <https://doi.org/10.1016/J.ECOLMODEL.2006.05.022>
- Liubartseva S, Coppini G, Lecci R, Clementi E (2018) Tracking plastics in the Mediterranean: 2D lagrangian model. Mar Pollut Bull 129:151–162. <https://doi.org/10.1016/j.marpolbul.2018.02.019>
- López-López L, Preciado I, González-Irusta JM, Arroyo NL, Muñoz I, Punzón A, Serrano A (2018) Incidental ingestion of meso- and macro-plastic debris by benthic and demersal fish. Food Webs 14:1–4. <https://doi.org/10.1016/J.FOOWEB.2017.12.002>
- Ludwig W, Dumont E, Meybeck M, Heussner S (2009) River discharges of water and nutrients to the Mediterranean and Black Sea: major drivers for ecosystem changes during past and future decades? Prog Oceanogr 80(3–4):199–217. <https://doi.org/10.1016/j.pocean.2009.02.001>
- Lusher AL, McHugh M, Thompson RC (2013) Occurrence of microplastics in the gastrointestinal tract of pelagic and demersal fish from the English channel. Mar Pollut Bull 67:94–99. <https://doi.org/10.1016/j.marpolbul.2012.11.028>
- Lusher AL, Hollman PCH, Mendoza-Hill JJ, Mendozal J (2017) Microplastics in fisheries and aquaculture: status of knowledge on their occurrence and implications for aquatic organisms and food safety. FAO, Rome
- Maresh S V., Ambarish G, Rekha NJ (2019) Stomach Content Analysis Techniques in Fishes. In: ICAR Sponsored Winter School on Recent Advances in Fishery Biology Techniques for Biodiversity Evaluation and Conservation. Kochi, pp 104–115.
- Markic A, Gaertner JC, Gaertner-Mazouni N, Koelmans AA (2020) Plastic ingestion by marine fish in the wild. Crit Rev Environ Sci Technol 50:657–697. <https://doi.org/10.1080/10643389.2019.1631990>
- Matiddi M, Pham CK, Anastasopoulou A, Andresmaa E, Avio CG, Bianchi J, Chaieb O, Palazzo L, Darmon G, de Lucia GA, Deudero S, Sozbilen D, Eriksson J, Fischer E, Gómez M., Herrera A, Hattia E, Kaberi H, Kaska Y, Kühn S, Lips I, Miaud C, Gambianni D, Nelms S, Piermarini R, Regoli F, Sbrana A, Setälä O, Settiti S, Soederberg L, Tomás J, Tsangaris C, Vale M, Valente T, Silvestri C (2021) Monitoring micro-litter ingestion in marine

- fish: a harmonized protocol for MSFD & RSCS areas. <https://indicat-europa.eu/cms/wp-content/uploads/2021/06/Monitoring-microplastic-ingestion-in-marine-fish-1.pdf>.
- Montuori P, Aurino S, Garzonio F, Sarnacchiaro P, Polichetti S, Nardone A, Triassi M (2016) Estimates of Tiber River organophosphate pesticide loads to the Tyrrhenian Sea and ecological risk. *Sci Total Environ* 559:218–231. <https://doi.org/10.1016/j.scitotenv.2016.03.156>
- Murray F, Cowie PR (2011) Plastic contamination in the decapod crustacean *Nephrops norvegicus* (Linnaeus, 1758). *Mar Pollut Bull* 62:1207–1217. <https://doi.org/10.1016/J.MARPOLBUL.2011.03.032>
- Neves D, Sobral P, Ferreira JL, Pereira T (2015) Ingestion of microplastics by commercial fish off the Portuguese coast. *Mar Pollut Bull* 101:119–126. <https://doi.org/10.1016/j.marpolbul.2015.11.008>
- Olaso I, Velasco F, Sánchez F, Serrano A, Rodríguez-Cabello C, Cendrero O (2005) Trophic relations of lesser-spotted catshark (*Scyliorhinus canicula*) and blackmouth catshark (*Galeus melastomus*) in the Cantabrian sea. *J Northwest Atl Fish Sci* 35:481–494. <https://doi.org/10.2960/j.v35.m494>
- Onsrud MSR, Kaartvedt S (1998) Diel vertical migration of the krill *Meganyctiphanes norvegica* in relation to physical environment, food and predators. *Mar Ecol Prog Ser* 171:209–219. <https://doi.org/10.3354/meps171209>
- Peristeraki P, Tserpes G, Kavadas S, Kallianiotis A, Stergiou KI (2020) The effect of bottom trawl fishery on biomass variations of demersal chondrichthyes in the eastern Mediterranean. *Fish Res*. <https://doi.org/10.1016/j.fishres.2019.105367>
- Provencher JF, Bond AL, Avery-Gomm S, Borrelle SB, Bravo Rebolledo EL, Hammer S, Kühn S, Lavers JL, Mallory ML, Trevaill A, Van Franeker JA (2017) Quantifying ingested debris in marine megafauna: a review and recommendations for standardization. *Anal Methods* 9:1454–1469. <https://doi.org/10.1039/c6ay02419j>
- Pruter AT (1987) Sources, quantities and distribution of persistent plastics in the marine environment. *Mar Pollut Bull* 18:305–310. [https://doi.org/10.1016/S0025-326X\(87\)80016-4](https://doi.org/10.1016/S0025-326X(87)80016-4)
- Ramírez-Amaro S, Ordines F, Esteban A, García C, Guijarro B, Salmerón F, Terrasa B, Massutí E, & (2020) The diversity of recent trends for chondrichthyan in the Mediterranean reflects fishing exploitation and a potential evolutionary pressure towards early maturation. *Sci Rep* 10:547. <https://doi.org/10.1038/s41598-019-56818-9>
- Reisser J, Slat B, Noble K, Du Plessis K, Epp M, Proietti M, De Sonnevile J, Becker T, Pattiaratchi C (2015) The vertical distribution of buoyant plastics at sea: an observational study in the North Atlantic Gyre. *Biogeosciences* 12:1249–1256. <https://doi.org/10.5194/bg-12-1249-2015>
- Rey J, de Sola LG, Massutí E (2005) Distribution and biology of the blackmouth catshark *Galeus melastomus* in the Alboran sea (southwestern Mediterranean). *J Northwest Atl Fish Sci* 35:215–223. <https://doi.org/10.2960/j.v35.m484>
- Ricci P, Sion L, Capezzuto F, Cipriano G, D'Onghia G, Libralato S, Maiorano P, Tursi A, Carlucci R (2021) Modelling the trophic roles of the demersal chondrichthyes in the Northern Ionian Sea (central Mediterranean sea). *Ecol Modell* 444:109468. <https://doi.org/10.1016/J.ECOLMODEL.2021.109468>
- Riedl R, Abel E (1991) Fauna e flora del Mediterraneo: dalle alghe ai mammiferi: una guida sistematica alle specie che vivono nel Mar Mediterraneo. F. Muzzio, Padova.
- Rochman CM, Kurobe T, Flores I, Teh SJ (2014) Early warning signs of endocrine disruption in adult fish from the ingestion of polyethylene with and without sorbed chemical pollutants from the marine environment. *Sci Total Environ* 493:656–661. <https://doi.org/10.1016/j.scitotenv.2014.06.051>
- Rochman CM, Tahir A, Williams SL, Baxa DV, Lam R, Miller JT, Teh FC, Werorilangi S, Teh SJ (2015) Anthropogenic debris in seafood: plastic debris and fibers from textiles in fish and bivalves sold for human consumption. *Sci Rep* 5:1–10. <https://doi.org/10.1038/srep14340>
- Russo T, Morello EB, Parisi A, Scarcella G, Angelini S, Labanchi L, Martinelli M, D'Andrea L, Santojanni A, Arneri E, Cataudella S (2018) A model combining landings and VMS data to estimate landings by fishing ground and harbor. *Fish Res* 199:218–230. <https://doi.org/10.1016/j.fishres.2017.11.002>
- Russo T, Franceschini S, D'Andrea L, Scardi M, Parisi A, Cataudella S (2019) Predicting fishing footprint of trawlers from environmental and fleet data: an application of artificial neural networks. *Front Mar Sci* 6:670. <https://doi.org/10.3389/fmars.2019.00670>
- Santos RG, Machovsky-Capuska GE, Andrades R (2021) Plastic ingestion as an evolutionary trap: toward a holistic understanding. *Science* 373:56–60. <https://doi.org/10.1126/science.abh0945>
- Savoca S, Capillo G, Mancuso M, Bottari T, Crupi R, Branca C, Romano V, Faggio C, D'Angelo G, Spanò N (2019) Microplastics occurrence in the Tyrrhenian waters and in the gastrointestinal tract of two congener species of seabreams. *Environ Toxicol Pharmacol* 67:35–41. <https://doi.org/10.1016/J.ETAP.2019.01.011>
- Sbrana A, Valente T, Scacco U, Bianchi J, Silvestri C, Palazzo L, Andrea G, Lucia D, Valerani C, Ardizzone G, Matiddi M (2020) Spatial variability and influence of biological parameters on microplastic ingestion by Boops boops (L.) along the Italian coasts (western Mediterranean sea). *Environ Pollut* 263:114429. <https://doi.org/10.1016/j.envpol.2020.114429>
- Steer M, Cole M, Thompson RC, Lindeque PK (2017) Microplastic ingestion in fish larvae in the western English channel. *Environ Pollut* 226:250–259. <https://doi.org/10.1016/j.envpol.2017.03.062>
- Suaría G, Avio CG, Mineo A, Lattin GL, Magaldi MG, Belmonte G, Moore CJ, Regoli F, Aliani S (2016) The Mediterranean plastic soup: synthetic polymers in mediterranean surface waters. *Sci Rep* 6:37551. <https://doi.org/10.1038/srep37551>
- Thompson RC, Swan SH, Moore CJ, Saal FS, vom Saal FS (2009) Our plastic age. *Philos Trans R Soc B Biol Sci* 364:1973–1976. <https://doi.org/10.1098/rstb.2009.0054>
- Torre M, Digka N, Anastasopoulou A, Tsangaris C, Mytilineou C (2016) Anthropogenic microfibrils pollution in marine biota: a new and simple methodology to minimize airborne contamination. *Mar Pollut Bull* 113:55–61. <https://doi.org/10.1016/j.marpolbul.2016.07.050>
- Tsiaras K, Hatzonikolakis Y, Kalaroni S, Pollani A, Triantafyllou G (2021) Modeling the pathways and accumulation patterns of micro- and macro-plastics in the Mediterranean. *Front Mar Sci* 8:1389. <https://doi.org/10.3389/fmars.2021.743117>
- Tuset VM, Lombarte A, Assis CA (2008) Otolith atlas for the western Mediterranean, north and central eastern Atlantic. *Sci Mar* 72:7–198. <https://doi.org/10.3989/scimar.2008.72s17>
- Valente T, Sbrana A, Scacco U, Jacomini C, Bianchi J, Palazzo L, Andrea G, Lucia D, Silvestri C, Matiddi M, de Lucia GA, Silvestri C, Matiddi M (2019) Exploring microplastic ingestion by three deep-water elasmobranch species: a case study from the Tyrrhenian sea. *Environ Pollut* 253:342–350. <https://doi.org/10.1016/j.envpol.2019.07.001>
- Valls M, Quetglas A, Ordines F, Moranta J (2011) Feeding ecology of demersal elasmobranchs from the shelf and slope off the Balearic sea (western Mediterranean). *Sci Mar* 75:633–639. <https://doi.org/10.3989/scimar.2011.75n4633>
- Van Franeker JA, Blaize C, Danielsen J, Fairclough K, Gollan J, Guse N, Hansen PL, Heubeck M, Jensen JK, Le Guillou G, Olsen B,

- Olsen KO, Pedersen J, Stienen EWM, Turner DM (2011) Monitoring plastic ingestion by the northern fulmar *Fulmarus glacialis* in the North Sea. *Environ Pollut* 159:2609–2615. <https://doi.org/10.1016/j.envpol.2011.06.008>
- Welden NA, Cowie PR (2017) Degradation of common polymer ropes in a sublittoral marine environment. *Mar Pollut Bull* 118:248–253. <https://doi.org/10.1016/J.MARPOLBUL.2017.02.072>
- Wood S (2017) Generalized Additive Models: An introduction with R. Texts in Statistical Science, United Kingdom.
- Worm B, Lotze HK, Jubinville I, Wilcox C, Jambeck J (2017) Plastic as a persistent marine pollutant. *Annu Rev Environ Resour* 42:1–26. <https://doi.org/10.1146/annurev-environ-102016-060700>
- Zambianchi E, Trani M, Falco P (2017) Lagrangian transport of marine litter in the mediterranean sea. *Front Environ Sci* 5:1–15. <https://doi.org/10.3389/fenvs.2017.00005>
- Zeileis A, Kleiber C, Jackman S (2015) Regression models for count data in R. *J Stat Softw* 27:1–25. <https://doi.org/10.18637/jss.v027.i08>
- Zhang H (2017) Transport of microplastics in coastal seas. *Estuar Coast Shelf Sci* 199:74–86. <https://doi.org/10.1016/j.ecss.2017.09.032>

Publisher's Note Springer Nature remains neutral with regard to jurisdictional claims in published maps and institutional affiliations.