



LJMU Research Online

Holliday, A, Horner, K, Johnson, KO, Dagbasi, A and Crabtree, DR

Appetite-related Gut Hormone Responses to Feeding Across the Life Course

<http://researchonline.ljmu.ac.uk/id/eprint/25258/>

Article

Citation (please note it is advisable to refer to the publisher's version if you intend to cite from this work)

Holliday, A, Horner, K, Johnson, KO, Dagbasi, A and Crabtree, DR (2025) Appetite-related Gut Hormone Responses to Feeding Across the Life Course. Journal of the Endocrine Society, 9 (2).

LJMU has developed **LJMU Research Online** for users to access the research output of the University more effectively. Copyright © and Moral Rights for the papers on this site are retained by the individual authors and/or other copyright owners. Users may download and/or print one copy of any article(s) in LJMU Research Online to facilitate their private study or for non-commercial research. You may not engage in further distribution of the material or use it for any profit-making activities or any commercial gain.

The version presented here may differ from the published version or from the version of the record. Please see the repository URL above for details on accessing the published version and note that access may require a subscription.

For more information please contact researchonline@ljmu.ac.uk

<http://researchonline.ljmu.ac.uk/>

Appetite-related Gut Hormone Responses to Feeding Across the Life Course

Adrian Holliday,^{1,2} Katy Horner,³ Kelsie O. Johnson,⁴ Aygul Dagbasi,⁵ and Daniel R. Crabtree⁶

¹School of Biomedical, Nutritional, and Sport Sciences, Faculty of Medical Sciences, Newcastle University, Newcastle Upon Tyne NE2 4HH, UK

²Human Nutrition and Exercise Research Centre, Population Health Sciences Institute, Newcastle University, Newcastle Upon Tyne NE2 4HH, UK

³Institute of Sport and Health, University College Dublin, Belfield, Dublin D04 V1W8, Ireland

⁴Research Institute for Sport and Exercise Sciences, Liverpool John Moores University, Liverpool L3 5RF, UK

⁵Section of Nutrition, Department of Metabolism Digestion and Reproduction, Imperial College London, Hammersmith Campus, London W12 0NN, UK

⁶The Rowett Institute, School of Medicine, Medical Sciences and Nutrition, University of Aberdeen, Aberdeen AB25 2ZD, UK

Correspondence: Adrian Holliday, PhD, School of Biomedical, Nutritional, and Sport Science, Faculty of Medical Sciences, Newcastle University, Framlington Place, Newcastle Upon Tyne NE2 4HH, UK. Email: Adrian.holliday@newcastle.ac.uk

Abstract

Appetite-related hormones are secreted from the gut, signaling the presence of nutrients. Such signaling allows for cross-talk between the gut and the appetite-control regions of the brain, influencing appetite and food intake. As nutritional requirements change throughout the life course, it is perhaps unsurprising that appetite and eating behavior are not constant. Changes in appetite-related gut hormones may underpin these alterations in appetite and eating.

In this article, we review evidence of how the release of appetite-related gut hormones changes throughout the life course and how this impacts appetite and eating behaviour. We focus on hormones for which there is the strongest evidence of impact on appetite, food intake, and body weight: the anorexigenic glucagon like peptide-1, peptide tyrosine tyrosine, and cholecystokinin, and the orexigenic ghrelin. We consider hormone concentrations, particularly in response to feeding, from the very early days of life, through childhood and adolescence, where responses may reflect energy requirements to support growth and development. We discuss the period of adulthood and midlife, with a particular focus on sex differences and the effect of menstruation, pregnancy, and menopause, as well as the potential influence of appetite-related gut hormones on body composition and weight status. We then discuss recent advancements in our understanding of how unfavorable changes in appetite-related gut hormone responses to feeding in later life may contribute to undernutrition and a detrimental aging trajectory. Finally, we briefly highlight priorities for future research.

Key Words: hunger, satiety, ghrelin, PYY, GLP-1, CCK

The gut is the largest endocrine organ in the body. Over 20 hormones are secreted from enteroendocrine cells (EECs) found on the epithelial lining of the gastrointestinal (GI) tract [1] in response to feeding-induced changes in luminal content and neurohormonal signals. Such hormone secretions signal nutrient status to other parts of the GI tract and to other tissues of the body. In doing so, these hormones play an important role in regulating not only gastrointestinal processes but also metabolic homeostasis and energy balance through controlling nutrient transit, digestion, and absorption and by influencing appetite and eating behaviour.

Appetite-related hormones are secreted from specialized EECs when ingested nutrients are sensed, primarily through G-protein coupled receptors localized on the apical cell membrane. Stimulation of these receptors results in a cascade of cellular signaling events, culminating in the secretion of gut peptides at the basolateral membrane. Through the circulation and neural pathways, these hormones signal to regions of the brain, such as the arcuate nucleus (ARC) of the hypothalamus—which has long been considered the primary appetite

control region of the brain—and the nucleus of the solitary tract in the dorsal vagal complex of the brainstem—the importance of which for appetite control has received more recent acknowledgement [2, 3]. Orexigenic (appetite-stimulating) and anorexigenic (appetite-suppressing) neuronal pathways then control appetite perceptions, influencing eating initiation, food choices, satiety, and satiety (see Fig. 1). The orexigenic agouti-related peptide and neuropeptide Y pathways and the anorexigenic pro-opiomelanocortin and cocaine-amphetamine-regulated transcript pathways of the ARC are well established, but more contemporary research has identified prolactin-releasing hormones and GCG neurons in the nucleus of the solitary tract as important anorexigenic pathways that respond to nutrient ingestion via vagus nerve stimulation [2]. However, the effect of gut hormones on these pathways is unclear, as stimulation of the prolactin-releasing hormones and GCG pathways may primarily be a result of orosensory signals and gut distension, respectively [2].

As our understanding of these hormones increases, it is becoming apparent that responses to feeding are not consistent

Received: 16 August 2024. Editorial Decision: 10 December 2024. Corrected and Typeset: 6 January 2025

© The Author(s) 2025. Published by Oxford University Press on behalf of the Endocrine Society.

This is an Open Access article distributed under the terms of the Creative Commons Attribution-NonCommercial-NoDerivs licence (<https://creativecommons.org/licenses/by-nc-nd/4.0/>), which permits non-commercial reproduction and distribution of the work, in any medium, provided the original work is not altered or transformed in any way, and that the work is properly cited. For commercial re-use, please contact reprints@oup.com for reprints and translation rights for reprints. All other permissions can be obtained through our RightsLink service via the Permissions link on the article page on our site—for further information please contact journals.permissions@oup.com. See the journal About page for additional terms.

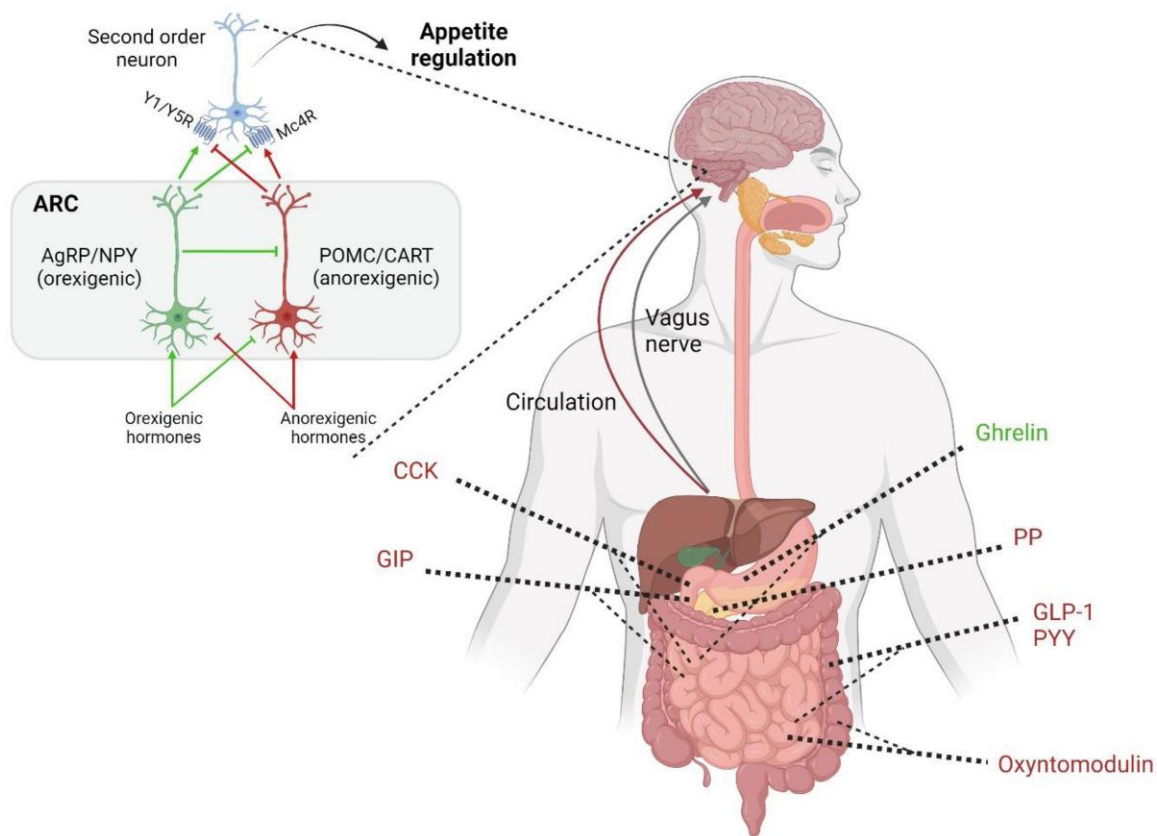


Figure 1. Appetite-related gut hormones and appetite control at their primary target region of the brain: the arcuate nucleus of the hypothalamus. Figure adapted, with permission, from Dagbasi et al [4]. Specifically, the orexigenic hormone ghrelin is secreted primarily from gastric mucosal cells of the proximal stomach. CCK is secreted primarily from I cells of the proximal small intestine. GLP-1 and PYY are secreted from L cells, primarily from the colon and ileum. These peptides signal via the circulation and vagus nerve to act upon the ARC. The orexigenic pathway signals through AgRP/NPY neurons, while the anorexigenic pathway signals through the POMC/CART neurons. Both pathways activate downstream neurons through stimulation and inhibition of Y1/Y5 and Mc4 receptors, stimulating and inhibiting food intake, through integrated brain signaling. Thick dashed line, primary site of secretion; thin dashed line, secondary site of secretion; → stimulation; T, inhibition; green, orexigenic hormone or pathway; red, anorexigenic hormone or pathway.

Abbreviations: AgRP, agouti-related peptide; CART, cocaine-amphetamine-regulated transcript; CCK, cholecystokinin; GIP, gastric inhibitory peptide; GLP-1, glucagon-like peptide-1; Mc4R, melanocortin 4 receptor; NPY, neuropeptide Y; POMC, pro-opiomelanocortin; PP, pancreatic polypeptide; PYY, peptide tyrosine-tyrosine; Y1/Y5R, neuropeptide Y 1/5 receptor.

and uniform across the life course. The sensing of nutrients in the GI tract and subsequent hormone release may change purely as a function of age. Evidence also indicates that natural and lifestyle-associated transitions along the life course—such as pregnancy, menopause, and changes in body composition and physical activity levels—may coincide with changes in circulating concentrations of appetite-related gut hormones and eating behavior.

This narrative review will discuss such changes in appetite-related gut hormones and the subsequent effect on appetite and food intake across the life course. We will cover childhood and adolescence into adulthood, considering how appetite-related gut hormone responses alter with sex, sexual maturation, menstruation, and changes in both body composition and physical activity through adulthood and midlife. We will then discuss recent evidence of changes in gut hormone secretion seen in later life. Finally, we will identify gaps in current understanding and highlight areas for further investigation.

Appetite-related Gut Hormones—The Main Players

Among the gut hormones with anorexigenic properties, peptide tyrosine-tyrosine (PYY), glucagon-like peptide 1

(GLP-1), and cholecystokinin (CCK) are the 3 with the strongest evidence of their appetite-suppressing effects. For a thorough discussion on the role of gut hormones in appetite control, the reader is directed to a number of excellent reviews [5-8]. Briefly, these peptides induce anorexigenic effects via direct circulatory and indirect neuronal stimulation of anorexigenic pathways in the arcuate nucleus of the hypothalamus, resulting in suppressed appetite, meal termination, and a reduction in energy intake (see Fig. 1). Identified in 1973, CCK was the first gut-derived hormone evidenced to influence appetite [9], with CCK infusion shown to reduce food intake in humans by 23% [10]. It is secreted from I-cells, primarily in the proximal duodenum and jejunum, with plasma concentrations increasing markedly within 15 minutes of feeding [11]. Hence, it is thought that CCK is largely responsible for early onset of satiation when eating. PYY and GLP-1 are secreted from L cells in response to nutrients. Elevating plasma concentrations of PYY [12], GLP-1 [13], or both synergistically [14] through infusions exert reductions in food intake. As L cell density increases from proximal to distal components of the GI tract [15], circulating concentrations rise more slowly with eating. Initial release—thought to be the consequence of neuronal signals and/or other hormonal factors—is followed by a later increase in secretion as

nutrients transcend to the distal gut, with concentrations in plasma peaking 30 to 60 minutes after ingestion and remaining elevated for approximately 3 to 5 hours, depending on energy and nutrient content of the ingested food [16, 17]. As such, these hormones are responsible for more sustained feelings of fullness after meals [11, 16, 18].

The only known orexigenic hormone, ghrelin, is responsible for inducing feelings of hunger and increasing food intake [19] through promoting eating initiation [20]. Ghrelin is produced by mucosal cells in the stomach [21] and undergoes an acylation within the endoplasmic reticulum of the cell before release into the circulation, where this “active” acyl-ghrelin form can exert its appetite-stimulating effect either directly at the hypothalamus or via the vagus nerve. There remains some uncertainty over the mechanisms by which ghrelin concentration rises during postabsorptive and fasting period, although this is thought to be via stimulation of mucosal cells by the sympathetic nervous system [22] and vagus nerve [23]. (For a thorough review of the mechanisms of ghrelin control, the reader is directed to the work of Nunex-Salces et al [7]). Ghrelin concentration gradually increases in the postprandial period and is highest immediately before feeding, coinciding with hunger and the initiation of eating [20]. Concentrations reduce sharply at the onset of food ingestion [24, 25]. The ghrelin-secreting mucosal cells of the stomach do not have direct contact with the gastric lumen, meaning direct sensing of stomach nutrient content is not the likely mechanism of suppression when eating. However, gut mucosal cells do contain membrane nutrient receptors, suggesting nutrient-sensing regulation of ghrelin suppression but via nutrient content of the blood [7]. There is also evidence that elevations in plasma concentrations of anorexigenic gut hormones [26, 27] and insulin [28] with feeding provide a feedback signal to reduce ghrelin production [7].

Appetite Control and the Role of Appetite-related Gut Hormones

Appetite control is complex and multifactorial, with both homeostatic and hedonic inputs driving appetitive perceptions and behaviors. Homeostatic control involves mechanisms to match energy intake with energy requirements, as well as the need to appropriately maintain nutrient status. The latter is mediated by episodic changes in gut hormones, as discussed earlier. Tonicity, classical studies by Edholm et al [29, 30] and Mayer et al [31] first demonstrated that energy intake largely matches energy expenditure, suggesting an appetitive drive and control of food intake modulated by energy requirements. However, Mayer et al [31] proposed that this coupling between intake and expenditure is dependent on activity levels. They showed a J-shaped relationship between occupational physical activity and energy intake in Indian mill workers, suggesting a mechanism of matching energy intake with physical activity-induced energy requirements is present for those of moderate to high activity levels, but a disconnect in this relationship is experienced by those with low activity.

This may help explain why those who are active remain largely weight-stable over prolonged periods of time while others exhibit weak homeostatic control of energy balance and experience pronounced weight gain. Sedentary behavior and excess adiposity likely weaken homeostatic appetitive control mechanisms [32, 33] and may heighten sensitivity to hedonic inputs of appetite control [34], such as the pleasure

and reward sensation experienced from eating (for thorough, expert reviews of “hedonic hunger,” see [35, 36]). Hence, the “nonregulated” end of the J-shaped relationship between physical activity and energy intake [34] is observed, resulting in overeating and weight-gain. However, it is very feasible that evolutionary pressure promoted the development of a capacity for hedonic and cognitive systems to “override” homeostatic inputs. This would have allowed for maximizing energy intake when food was available—even when not hungry—during a time when access to food was scarce and insecure. Hence, some argue that excess consumption and excess weight, as a consequence of high hedonic control of eating, is a “natural,” adapted response to environments of high availability of energy-dense foods [36, 37].

With such a capacity for hedonic inputs to override homeostatic systems, and despite seminal studies evidencing the potent effects of gut hormones on food intake, the influence of these hormones on eating behavior in humans remains somewhat contentious. Early studies that demonstrated the appetitive influence of gut hormones typically involved infusions at, or close to, nonphysiological concentrations [10, 12-14, 19, 27]. The association between hormone concentration and energy intake is not always seen with lower infusion rates [38, 39] or is weaker when plasma concentration is within the physiological range [40]. Studies that have manipulated diet and then assessed the association between concentrations of endogenous gut hormones and ad libitum intake provide more ecologically valid insights into their effect on eating behavior. In such studies, associations have been observed by some [41-44] but not by others [42-45], with inconsistencies across studies and between different hormones within the same study. As such, inferring effects on eating behavior when changes in gut hormone concentrations are observed but ad libitum feeding is not measured (a not uncommon approach in studies in this field) should be avoided.

It should also be acknowledged that the extent to which fasted concentrations of appetite-related gut hormones influence food intake is questionable, compared with the response during feeding [41, 46]. Counterintuitively, some studies have observed a negative association between fasted ghrelin concentration and ad libitum intake [47, 48]. However, it is likely that ghrelin is a more potent initiator of eating than a regulatory of energy intake once feeding has started [20]. Fasting anorexigenic hormone concentrations show little association with energy intake in healthy people [41, 49-51]. With physiological ranges, their control of eating behavior is likely more potent in the postprandial period, with the anorexigenic effects of GLP-1, in particular, appearing blunted in the fasted compared with the postprandial state [52]. The importance of fasted-state hormone concentrations may also be further limited when considering that most people spend little of their waking time in a fasted state; for those who do not experience food insecurity and follow regular eating patterns, most time will be spent in the postprandial or postabsorptive state. As such, we will focus on postprandial responses and distinguish between fasting and postprandial measures. Assertions of the effects of fasted concentrations of appetite-related gut hormones on eating behavior and energy intake should be avoided.

It is plausible that a change in the circulating concentration of a single appetite-related hormone, in isolation, has only a limited impact on eating behavior. In addition, this may be a somewhat moot point given that gut hormones do not

respond in isolation to feeding; eating a mixed meal induces alterations in numerous gut hormones, and it is the combination of these changes that likely effects food intake. In a recent study by Dagbasi and colleagues, a composite measure of the responses of ghrelin, PYY, and GLP-1 to a standardized breakfast meal was calculated—termed the “anorexigenic response score,” with a higher score indicating a more anorexigenic response (ie, greater increase in PYY and GLP-1 and greater suppression of ghrelin). This response score was significantly, negatively related to energy intake at an ad libitum lunch meal. This suggests that the combined response of these hormones did influence subsequent food intake.

It is also worth considering the role of appetite-related hormones in weight management treatments. Bariatric surgery, which is currently the most effective weight loss strategy, induces an alteration in gut hormone concentrations. Postsurgery, responses of GLP-1 and PYY to feeding are amplified [53] (with typically no effect observed in fasting concentrations [54]), contributing to reduced appetite and food intake. Blocking the actions of these hormones in bariatric surgery patients increases the energy intake by 20% [49], highlighting the role of these hormones, even at physiological levels, in the reduced energy intake achieved following the surgery. GLP-1 receptor agonists have emerged as contemporary and effective antiobesity medication [55]. While these are exogenous peptide mimetics of GLP-1, often with an extended half-life and greater stability for a more potent effect, their efficacy [56], highlights the regulatory role of the GLP-1 pathway in eating behavior.

Despite the complexity of appetite control, with numerous inputs and regulatory pathways, this evidence would suggest that appetite-related gut hormones, and particularly their response to food ingestion, do influence eating behavior and food intake. The remainder of this review will focus specifically on the appetite-related gut hormones PYY, GLP-1, CCK, and ghrelin. We will discuss, primarily, the extent to which their response to feeding, and the consequences for appetite and food intake, differs across the life course.

Childhood and Adolescence

Throughout infancy, childhood, and adolescence, growth and changing body composition and energy requirements occur, which may influence or be influenced by appetite-related gut hormones. For example, in general, height increases by approximately 25 cm in the first year of life, 12 to 13 cm in the second year, and 5 to 6 cm each year until puberty [57]. Although the timing varies widely between individuals, puberty generally occurs earlier in girls than boys, with growth spurts reported as a peak height velocity of 8.3 cm·year⁻¹ at age 11.5 years in girls and 9.5 cm·year⁻¹ at age 13.5 years in boys [58]. These changes correspond to significant increases in fat free mass in childhood and adolescence. For example, fat free mass has been reported to increase from ~8 and 9 kg to ~15 and 16 kg between age 1 year and 5 years in girls and boys, respectively [59]. Body fat also fluctuates with total body fat reported at approximately 11% to 15% at 2 weeks old in healthy newborns, increasing to 30% at 6 months old, decreasing to ~20% at 2 years old, and ranging between ~15% and 20% at 5 to 10 years old, with lower levels in boys [57, 59]. Relative to body weight, energy requirements decrease during childhood and adolescence; however, absolute energy requirements increase with increasing age [60].

Appetite-related gut hormones may exhibit unique responses to food in very early life. Postprandial ghrelin concentrations appear to vary in childhood and adolescence and are modified by a variety of factors [61]. In neonates (2-4 days old), findings from 2 studies [62, 63] suggest that nutrient intake (breast or formula feeding) does not suppress ghrelin levels, which could play a role in growth. In contrast, in infants at 1 year of age, both babies born small and appropriate for gestational age showed a significant suppression of ghrelin between fasting and 10-minute post-glucose infusion [64]. Interestingly, lower ghrelin suppression was associated with greater infancy weight gain in small for gestational age infants, which could play a role in postnatal catch-up growth [64].

Evidence in prepubertal children is mixed with some studies showing no impact of food intake on postprandial ghrelin levels [65-67] but others showing a significant ghrelin suppression [68-73]. This disparity in findings could be due to differences in the study test meals, timing/methods of sampling, different methods of ghrelin measurements, or characteristics of the population studied. Although it has been suggested that a lack of ghrelin suppression occurs in lean children but not children with obesity [74], several studies involving a direct comparison of children (age 7 to 12 years) with and without obesity (eg [68, 69, 71], have demonstrated postprandial ghrelin suppression to occur. Interestingly, ghrelin suppression was reduced in children with obesity in these studies compared to those of healthy weight [68, 69, 71] and associated with reduced insulin sensitivity [68].

In adolescents, most studies have reported a significant suppression of acyl-ghrelin and unacylated and/or total ghrelin in response to mixed meals [75-80], which appears to differ with pubertal stage [76-78] and weight status [81]. Ellis et al [77] observed lower total ghrelin suppression in early to midpubertal girls compared with adults with excess weight. In boys with obesity, lower total ghrelin suppression was observed in mid-late puberty compared with pre-early puberty [78]. Elsewhere, Prodam et al [76] reported lower unacylated ghrelin suppression during an oral glucose tolerance test (OGTT) in prepubertal compared with pubertal children with obesity, although the acyl-ghrelin response was similar. The response also appears to be modified by weight status, with evidence from a meta-analysis by Nguo et al [81] finding children (aged 6-12 years) and adolescents (aged 12-18 years) with obesity to have attenuated ghrelin responses at 60 minutes (5 studies) and 120 minutes (4 studies) after meal ingestion compared with those of a healthy weight. Others have shown the meal type modifies the extent of active and total ghrelin suppression in adolescents [79, 80].

Collectively, studies to date suggest ghrelin does not respond to nutrient intake in neonates, whereas postprandial ghrelin suppression has been demonstrated in prepubertal children and in adolescence, although the absolute reduction may be influenced by age/puberty and weight status, among other factors.

Fewer studies have examined the responses of anorexigenic hormones to nutrient intake. In neonates (4 days old), CCK was found to increase immediately after and at 30 and 60 minutes after breastfeeding, and it was proposed that it could enhance satiation despite little food in the first days of life [82]. Limited studies have examined CCK responses to food intake in older children or adolescents; however, 1 study reported the CCK response to a meal was higher in adolescent girls with obesity compared with those of healthy weight [83],

suggesting CCK was unlikely to have a role in weight gain in adolescent girls.

Studies examining PYY and GLP-1 in neonates and infants have reported primarily on concentrations prior to feeding [84-86]. There is consistent evidence of a blunted PYY response to food intake in those with obesity vs healthy weight in children (aged 7-11 years) [87] and adolescents [75, 88], including from meta-analysis [81]. There is also evidence that sex may modify the response in adolescence, with higher PYY concentrations in boys than girls in 1 study [78]. With regard to the impact of puberty, Patel et al [78] found lower PYY responses to nutrient intake in mid-late pubertal boys compared with pre- to early puberty. Although the literature is limited, these findings suggest lower postprandial PYY levels (alongside reduced postprandial ghrelin suppression) could be a potential mechanism contributing to increased food intake and facilitating growth in adolescence.

With regard to postprandial GLP-1 responses, in 1 study in 7- to 11-year-olds, GLP-1 did not increase after eating [89]. The authors speculated that, among other reasons, this finding could be due to a lack of sex hormone production in younger children. For example, there is evidence that oestrogen can increase GLP-1 secretion [90], which could explain differences in GLP-1 secretion between younger children, adolescents, and adults. In contrast to younger children [47], studies in adolescents with and without obesity have reported a significant increase in GLP-1 in response to a variety of mixed meals or OGTT, with some [83, 91, 92] but not all [79] showing the response to be attenuated in those with obesity. Elsewhere, the GLP-1 response to an OGTT was attenuated in African American compared with Caucasian adolescents despite similar adiposity and insulin sensitivity [93].

In summary, although studies examining the influence of age/puberty directly are still limited, there is evidence of alterations in postprandial gut hormone responses to nutrients throughout childhood from infancy to adolescence, which may have implications for appetite control, growth, and weight status. A variety of factors including age, pubertal stage, meal type, weight status, race, and sex may impact the response. It is possible that the change observed in these hormones may serve a purpose for a higher energy intake to facilitate growth and development; however, dysregulation in such an adaptation may contribute to excess weight gain in childhood.

Adulthood and Midlife

During adulthood (>18 years old) and mid-life (defined here as 40-64 years old, in line with the Centers for Disease Control and Prevention [94]), healthy individuals will exhibit the “typical” gut hormone response to food intake, as introduced earlier. Adults typically increase their body mass from young adulthood to midlife, with an average weight gain of $\sim 0.4 \text{ kg}\cdot\text{year}^{-1}$ reported in US adults, representing a median weight increase of $\sim 11 \text{ kg}$ from the age of 25 to 55 years old [95] and a typical increase in body mass index (BMI) of between 3 and 10 kg m^{-2} during this period [96]. This weight gain is mainly attributable to an increase in adiposity. This change in body composition along with a reduction in activity levels (discussed in “Changes in Physical Activity”) is associated with a reduction in estimated energy requirements from young adulthood to middle age [97]. It is possible that this is accompanied, or dictated, by changes in gut hormone

concentrations, although data in this area are scarce. To the best of our knowledge, no longitudinal cohort study has tracked gut hormone concentrations over prolonged periods of time without manipulation.

On the other hand, there is a vast amount of evidence to highlight that gut hormone responses may differ between men and women, driven by stark hormonal differences between men and women during this stage of life. Women, in particular, experience periods of changes in food intake and energy requirements, such as during pregnancy, through menopause, and even at different stages of the menstrual cycle, and appetite-related gut hormones may play a role in regulating eating behavior to match energy intake with requirement. However, a mismatch in energy intake and expenditure can be experienced through this period of adulthood and midlife, with long-term, gradual weight gain common; dysregulation of appetite-related gut hormones may also be implicated in such a mismatch between intake and requirements for some.

Sex Differences

Sex alters fasting gut hormone levels [98-101] and postprandial responses to a variety of nutritional challenges [99-103]. Evidence in general highlights a higher level of both anorexigenic and orexigenic appetite hormones in women compared with men although conflicting evidence can be found in the literature. Greater fasting [98, 99, 104] and postprandial [99, 100] ghrelin concentrations have been observed in women compared with men, independent of body composition [104] or in the absence of sex differences in BMI [100]. However, several studies have reported no effect of sex [101-103, 105-107]. Giezenaar et al [107] found that women exhibit attenuated CCK and GLP-1 responses to nutrient intake compared with BMI-matched men, while conversely others have observed elevated postprandial GLP-1 levels in women vs men [98, 108, 109]. Though women have been shown to exhibit lower fasting PYY than men [110, 111], postprandial responses are reported to be greater [98, 105]. Conversely, Yunker et al [109] showed no sex differences in PYY response to carbohydrate ingestion, despite sex differences in GLP-1 response. Discrepant findings between studies investigating sex differences in appetite-related gut hormones could be related to menstrual cycle phase, with lower GLP-1 levels found during the follicular compared with luteal phase [112]. In addition, some studies did [105, 107, 108] and some did not [98, 106, 109-111] account for differences in body composition between men and women, which can influence gut hormone concentration (see “Changes in Body Composition”). Previous studies have reported a positive association between percent body fat and anorexigenic gut hormone concentrations in women but not men [111, 113], while menopausal status has been shown to significantly influence circulating PYY concentrations [111]. Furthermore, slower gastric emptying rates have been observed in females compared with males [100, 106], potentially mediating contrasting gut hormone responses to nutrients between sexes.

Menstruation

Contrasting findings regarding sex differences may be a result of measurements in women being obtained at different stages of the menstrual cycle. While some studies assessed hormones concentrations in the follicular phase [107, 109], others did

not control for or report the stage of the cycle [99-103, 105, 106, 110, 111, 113]. The extent to which sex differences in appetite control can be explained by menstruation and consequent sex hormone profiles is worth considering. Menstruation and the stage of the menstrual cycle can influence eating behavior. Food intake has been shown to be greater in the luteal phase than the follicular phase [114, 115], with this increase coinciding with a spike in LH [112]. Such an adaptation likely exists to prepare the body for potential pregnancy and coincides with an increased resting metabolic rate [116, 117]. Increased energy intake appears to be a consequence of greater sugar intake [118] and larger intakes at meals as opposed to an increase in eating episodes [112], which may indicate a reduction in the satiety response to ingested nutrients and carbohydrates in particular. Campolier et al [119] showed an attenuated PYY response to a standardized breakfast in the luteal phase compared with the follicular phase. However, in contrast, Brennan and colleagues [115] showed a greater GLP-1 concentration in response to a glucose load in the luteal phase. This appears somewhat paradoxical, as postprandial subjective appetite and test meal ad libitum energy intake was greater during the luteal phase, compared with the follicular phase [115]. As there appears to be changes in appetite control with the stage of the menstrual cycle, future studies exploring sex differences in appetite-related gut hormones should account for stage of the cycle, perhaps comparing men with women assessed in both the follicular and luteal phases to identify genuine sex differences and differences that result from menstrual cycle stage.

Pregnancy

In this period of childbearing age, a woman may indeed become pregnant and give birth. During the second and third trimesters of pregnancy, energy requirements are increased by approximately 300 to 350 kcal/day and 500 kcal/day, respectively [120, 121] (which is markedly less than the concept of “eating for two”). This is partly met by a decrease in energy expenditure but also by a typical increase in energy intake of ~10% [122]. Yet, managing this modest increase in energy demand can be difficult to regulate, with excess gestational weight gain experienced by approximately 43% of women [123]. As such, the role of appetite-related gut hormones in modulating appetite and food intake during pregnancy warrants discussion.

Perhaps counterintuitively, fasting GLP-1 concentration was shown to increase from the second to the third trimester in pregnant women [124], although no prepregnancy data was measured for comparison. In line with the increased energy requirements, however, Manglier et al [125] recently showed that GLP-1 response to feeding is attenuated during the second and third trimester, compared with the first trimester, favoring energy intake. Studies in rats have shown elevated fasting PYY concentrations during pregnancy [126], with no change throughout pregnancy observed in humans [124]. Similarly, and again counterintuitively, Frick et al [127] evidenced elevated fasting CCK during pregnancy compared with during the menstrual cycle in women, particularly during the second and third trimesters. However, elevated fasting anorexigenic hormone concentrations have typically not been associated with increased satiety—further questioning the influence of fasting levels on eating behavior—and have been attributed to enlargement of the GI tract during pregnancy [126].

Increases [128, 129], no change [124], and even very low [130] ghrelin concentrations have been reported during pregnancy in humans. Both Palik et al [128] and Fuglsang and coworkers [129] showed that fasting plasma ghrelin concentration increased in the second trimester but fell in the third trimester after peaking at 18 weeks of gestation. Interestingly, a study in rats showed that maternal ghrelin activates GH secretagogue receptor on fetal tissue, thought to contribute to fat accumulation and growth in the fetus, and that ghrelin treatment of the mother resulted in greater birth weight of offspring, even when controlling for maternal energy intake [131]. This suggests ghrelin plays an important role in fetal development, independent of any potential influence on maternal appetite and feeding. Cross-sectionally, women with excess weight who gained excess weight during the second trimester of pregnancy had attenuated gut hormone responses to feeding, compared with those who experienced healthy gestational weight gain [132]. From these data, it remains unclear whether appetite-related gut hormones alter in a manner to promote the matching of increased energy requirements during pregnancy, with further research in humans required, particularly with regard to hormone responses to feeding. However, the little evidence available does suggest that variation in gut hormone response to feeding may contribute to excess weight gain during pregnancy.

Menopause

At the end of this child-bearing age, menopause is characterized by important hormonal and metabolic changes that may modulate food intake. Reductions in estrogens and increases in androgens secretion [133] are believed to contribute to a dysregulation of appetite control [134], leading to weight gain [135] and an increase in body fat [136]. However, evidence for changes in gut hormones in the menopausal state is limited. Our understanding is hindered by the intricate interplay of sex-specific hormones and methodological differences between studies, with inconsistencies in methods used to determine menopause. It would appear that fasted ghrelin concentration is increased during the perimenopausal period, with no difference between pre- and postmenopausal periods [137]. Interestingly, ovariectomized rats showed an increased ghrelin concentration [138] and increased sensitivity to ghrelin [139], suggesting menopausal changes in estrogen may have resulted in elevated postmenopausal ghrelin and augmented appetite responses to ghrelin, which may explain body composition changes commonly experienced during this period. Conversely, in humans, lower fasting ghrelin concentration has been seen in postmenopausal compared with premenopausal women, with no rapid change in ghrelin after ovariectomy, despite an immediate reduction in estrogen [140]. Stojiljkovic-Drobnjak and colleagues [141] observed a minimal difference in fasted and postprandial ghrelin concentrations between pre- and postmenopausal women, while Purnell and colleagues [103] observed no differences in fasting ghrelin between premenopausal women, postmenopausal women, and postmenopausal women receiving hormone replacement therapy.

As may be the case with ghrelin, ovariectomized rats have shown reduced sensitivity to the anorexigenic effects of CCK and GLP-1 [142, 143], which again suggests neural changes to the sensitivity of gut-derived appetite signals with menopause transition. Sensitivity to anorexigenic hormones

has not been determined in differing menopausal states in humans, but studies have compared plasma concentrations, albeit with contrasting findings. No difference was seen in fasted CCK concentrations between pre- and postmenopausal women living with obesity [144], while those of postmenopausal status have been shown to exhibit contradictory lower GLP-1 [145] and higher PYY [110] concentrations, compared with those of premenopausal status. As such, the estrogen-mediated effect of menopause transition on sensitivity to appetite-related gut hormones and the role of menopausal status and transition on the secretion of these hormones remain areas for exploration in humans.

Changes in Body Composition

As was identified earlier in children and adolescents, appetite-related gut hormone response to feeding may differ with weight status and body composition. The prevalence of excess weight increases from early adulthood to midlife, with weight gain commonly experienced throughout adulthood [146, 147]. There is compelling evidence that anorexigenic hormone responses to feeding differ between those of a healthy weight and those living with obesity. In their seminal study of 2003, Batterham and colleagues [27] showed that both fasted and postprandial PYY concentrations are lower in those living with obesity, with an inverse association found between fasting PYY concentration and BMI [27]. This suggests that attenuated PYY response to feeding may contribute to reduced satiety in those with excess adiposity. However, when plasma concentration was matched to that of lean individuals through infusion, the anorexigenic response to appetite perception and feeding was restored [27], indicating that sensitivity to the appetite-suppressive effects of PYY remains in those living with obesity. Similarly, increases in GLP-1 concentration are blunted in those with excess adiposity [106, 113, 148], which coincided with lower ratings of satiety [113]. Fewer studies have compared CCK concentrations between healthy weight and those living with obesity. However, it would appear both exhibit similar CCK responses to food intake [43].

Fasting ghrelin concentration is negatively associated with body mass [101], with somewhat counterintuitive lower concentrations observed in those living with obesity [102, 149, 150]. This may be due to the ghrelin-suppressive effect of hyperinsulinemia [149, 151], although a lack of a relationship between insulin and ghrelin has also been reported [101]. There is evidence of attenuated ghrelin suppression with feeding in those with excess adiposity [149, 150, 152], but findings are inconsistent [43, 153]. A recent meta-analysis by Aukan et al [154] showed lower postprandial ghrelin concentrations in those with obesity compared with healthy-weight individuals; however, this was largely driven by lower fasted concentrations and actually masked smaller meal-induced suppressions in those with obesity [148, 155]. In another recent meta-analysis, Wang et al [156] showed a similar magnitude of ghrelin suppression in those with obesity compared with healthy-weight individuals, but the suppression was more transient, showing a quicker return to preprandial concentrations (120 minutes after meal ingestion).

Whether such dysregulation in appetite-related gut hormone responses to feeding are causes or consequences of excess weight is unclear. Cross-sectional studies do not permit the determination of causality, and there is a scarcity of

longitudinal data. This contention of “cause or consequence” was addressed in the review of Lean and Malkova [157]. With a sparsity of data monitoring gut hormone changes with weight gain, they focused on the effect of calorie restriction and exercise-induced weight loss. In brief, diet-induced weight loss tends to elicit a compensatory response in appetite-related gut hormones to oppose energy deficit and promote feeding and weight regain. This, coupled with a reduction in total energy expenditure, is referred to as the “compensatory theory” [56]. In the study of Sumithran et al [158], 50 participants with excess weight followed a 10-week energy-restricted diet, inducing a 14% reduction in body mass. Immediately after the diet period, fasted and postprandial PYY and CCK were lower. At a 1-year follow-up, values remained significantly lower than before weight loss, evidencing an enduring change that prevailed even when energy balance was reestablished. Weight loss achieved through calorie restriction induces a compensatory increase in both fasted and postprandial ghrelin concentration [153, 158, 159]. As with some of the anorexigenic hormones, this response continues beyond the period of energy deficit and is maintained in a post-weight loss period of energy balance [153, 158]. Collectively, these findings suggest that alterations in appetite-related hormones in reduced-obese individuals drive weight regain; however, findings to the contrary have been reported. For example, DeBenedictis et al [160] found that basal and postprandial ghrelin concentrations increased following acute and sustained weight loss and did not differ from those of a nonobese control group. Furthermore, weight loss has been shown to elevate postprandial GLP-1 levels to concentrations comparable with those of lean controls [40]. Consequently, Martins and colleagues [56] proposed a new theory (the “normalization theory”), which, in contrast to the compensatory theory, purports that a reduction in body mass improves appetite control and that the increased orexigenic drive to eat observed in the reduced-obese state reflects a normalization toward a lower body weight. Whether changes in appetite-related hormones following weight loss represent a compensatory response or a normalization toward a lower body weight remains unclear.

As mentioned earlier, weight loss induced by bariatric surgery elicits effects on anorexigenic gut hormones [161]. Roux-en-Y gastric bypass results in augmented postprandial secretions of PYY and GLP-1 [49, 162, 163], with no change in fasted concentrations. However, this is likely a consequence of more rapid delivery of nutrients to the jejunum, rather than weight loss. Nonetheless, this favorable change in anorexigenic hormone response is likely a key factor in successful weight-loss maintenance with surgery, as acutely blocking the actions of GLP-1 and PYY in bariatric surgery patients increased food intake by 20% at a test meal [49].

As such, these data would suggest changes in appetite-related gut hormones are likely both a cause and consequence of changes in body composition and weight status. Hormonal response to weight loss appears dependent on the means of losing weight, with these influencing the success of the maintenance of weight loss. However, the role of appetite-gut hormones in gradual, long-term weight gain is less clear.

Changes in Physical Activity

A possible contributing factor to weight gain through adulthood and midlife is the observed reduction in physical activity

[164]. As discussed in “Appetite Control and the Role of Appetite-Related Gut Hormones,” physical activity, as a component of energy requirement, is considered a determinant of energy intake [29–31, 33]. It would appear that a moderately to highly active lifestyle facilitates the matching of energy intake with requirements, but for those with a low activity level, there is a disconnect between energy intake and requirements, underpinned by changes in sensitivity to homeostatic and hedonic systems to promote positive energy balance and weight gain [32–34]. Consequently, a reduction in physical activity may contribute to changes in appetite control. The extent to which this is mediated by appetite-related gut hormones is somewhat unclear. This is largely due to a lack of studies assessing longitudinal changes in physical activity and gut hormone metabolism. Nonetheless, it is proposed that physical activity enhances sensitivity to appetite-related hormones [32, 165]. Martins et al [166] showed a trend for augmented GLP-1 response to feeding in those with excess weight after a 12-week aerobic exercise training program, potentially tightening the coupling between energy intake and expenditure. However, it is difficult to determine if this is a response to exercise per se or exercise-induced weight loss. As most studies exploring the effects of an increase in exercise on gut hormones are in previously inactive people with excess weight who embark on an exercise program to promote weight loss, this is a common problem. Typically, and in contrast to diet-induced weight loss, exercise-induced weight loss appears to have little effect on anorexigenic gut hormones [167] or even heightens the responses to feeding [157], as seen by Martins et al [168]. Such hormonal adaptations point to the benefit of incorporating exercise into effective weight-management strategies.

Later Life

Later life, or older adulthood, is typically considered to begin at the age of 65 years [94]. This period of the life course is accompanied by a reduction in muscle mass—known as sarcopenia—at a rate of between 0.6% and 1% per year [169] or 3% to 8% per decade [170], accelerating with increasing age. In severe cases, this can lead to a loss of up to 50% of muscle mass [169] and an even greater reduction in strength [171, 172], along with hormonal changes [173] and lifestyle alterations, including reduced physical activity [174, 175], increased sedentarism [176], and changes in dietary intake [177, 178]. In alignment with the reduction in muscle mass and activity, studies have observed lower metabolic rate [179, 180] (observed even when adjusting for fat-free mass) and total daily energy expenditure [181, 182] in older adults. Consequently, energy requirements are reduced in later life.

However, meeting such requirements in later life is challenging. Somewhat paradoxically, those aged 65 to 75 years are at greater risk of both excess body mass and low body mass, compared with young and mid-life adults [183]. Though it is a low body mass and a loss of mass, rather than excess body mass or gains in mass, that pose the greatest risk of mortality in older adults [184, 185]. Consequently, research exploring the physiology of appetite control in later life has predominantly focused on the association between age-related alterations in appetite and the development of undernutrition, as opposed to overweight and obesity.


The etiology of undernutrition in older people is multifactorial, but one key determinant is age-related abnormalities

in the balance between hunger and satiety. A meta-analysis conducted by Giezenaar and colleagues [186] determined the effect of age on appetite and reported lower fasting and postprandial hunger and greater fasting fullness in older adults compared with younger adults. Loss of appetite in later life is termed “anorexia of aging” [187] and is highly prevalent across settings, affecting approximately 15% to 30% of community-dwelling older adults and rising to over 40% in clinical settings [188–191]. However, the precise mechanisms underpinning anorexia of aging are yet to be fully elucidated.

One proposed mechanism of anorexia of aging is a change in appetite-associated gut hormone secretion with age. A comprehensive meta-analysis of circulating appetite-related hormones comparing younger to older adults by Johnson et al [192] demonstrated few differences in fasting and postprandial circulating total ghrelin concentrations. While limited studies were available for fasted acyl-ghrelin, there did appear to be a reduction in postprandial acyl-ghrelin in older adults when compared to young adults. In addition, older adults exhibited higher fasted and postprandial concentrations of circulating CCK and a trend for higher postprandial PYY when compared with their younger counterparts. There were no differences, however, found in GLP-1 and GIP. These observed changes in gut hormones between younger and older adults were in accord with decreased subjective hunger in older adults [192].

However, postprandial gut hormone responses can vary greatly in older adults [192]. Indeed, with the prevalence of anorexia of aging in community-dwelling older adults being around 30%, it is likely that study cohorts of older adults consist of some with impaired appetite and some with unimpaired, healthy appetite. Until recently, it was unclear as to whether hormonal dysregulation was causal of anorexia of aging, as studies have typically afforded little consideration as to the heterogeneity of older adult appetite control.

Research conducted by Holliday et al [47] and Dagbasi et al [41] has advanced our understanding of anorexia of aging by distinguishing between healthy-appetite and appetite-suppressed older adults when exploring age-related differences in gut hormone circulation. In both studies, a novel multicriteria classification model was used to phenotype older adults with low appetite. Older adults were considered to have suppressed appetite if 2 of the following 4 criteria were met: low weight (BMI <23 kg m⁻² [184, 193]), score of <15 on the Simplified Nutritional Appetite Questionnaire [194], habitual energy intake <75% of estimated daily total energy requirements (as identified by the World Health Organization as indicative of undernutrition), and a laboratory-measured ad libitum lunch intake of <25% of estimated total energy requirements (based on a typical lunch energy intake of ~27% of total energy intake in UK adults [195]). Holliday et al [47] determined total and acyl-ghrelin concentrations in older adults with low appetite, older adults exhibiting a healthy appetite, and young adults in both the fasted and fed states. Findings demonstrated that while greater fasted ghrelin concentrations and an augmented postprandial acyl-ghrelin suppression were observed in older compared with younger adults, such differences were driven by older adults with low appetite. Dagbasi et al [41] confirmed the findings of Holliday et al [47] while also observing greater and more prolonged increases in postprandial PYY and GLP-1 levels in appetite-suppressed older adults compared with younger adults, which was not observed in older adults with a healthy appetite. In addition, Dagbasi et al [41] reported that



| | Infancy and Toddlers | Childhood and Adolescence | Adulthood | Later Life |
|----------------|--|---|--|--|
| Ghrelin | No suppression postprandially in neonates (2-4 days). Suppression observed in toddlers | Dependent on age/puberty and body weight. Attenuated suppression observed in obese/overweight. | Higher in women. Higher in peri-menopausal women. Possible transient suppression and lower fasted levels in obesity | Higher fasted levels and augmented suppression in older adults with reduced appetite |
| CCK | Quick increase after food intake in neonates. | Higher postprandial increase in obese adolescent girls | Increased fasted levels in pregnancy | Higher fasted and postprandial concentrations of circulating CCK |
| PYY | Lacking evidence | Blunted response in obese children and adolescents and in mid/late puberty in boys. Higher in boys than girls | Attenuated response in women in luteal phase and obesity. | Greater and prolonged postprandial increase in older adults with reduced appetite |
| GLP-1 | Lacking evidence | Blunted response in obese children and adolescents and African American children. | Augmented response in luteal phase. Increase in fasted but attenuation in postprandial levels in pregnancy. Attenuated response in obesity | Greater and prolonged postprandial increase in older adults with reduced appetite |

Figure 2. Summary of changes in ghrelin, cholecystokinin, peptide tyrosine-tyrosine, and glucagon-like peptide-1 response to feeding across the life course, from infancy to later life.

appetite-related gut hormone response to feeding proved a significant predictor of ad libitum lunch intake, with gut hormone response accounting for 18% of variance in lunch intake among the older cohort. Furthermore, the 4-criteria classification model explained 48% of the variance in gut hormone response in older adults, supporting the appropriateness of this approach for identifying those with low appetite. Holliday et al [47] and Dagbasi et al [41] have demonstrated for the first time that differences in ghrelin, PYY, and GLP-1 concentrations between young and older adults are not functions of aging per se and may be causal of impaired appetite in later life. Potential mechanisms have recently been proposed [4], including altered digestion and absorption of nutrients, inflammatory changes in the lumen environment, and dysregulated EEC cell signalling. Future studies should adopt the multicriteria classification model for identifying the anorexia of aging phenotype to explore these potential mechanisms underpinning age-related appetite loss.

Methodological Considerations

As is evident from this review of the literature, some contention and disagreement in findings persist when trying to ascertain appetite-related gut hormone responses to food and differing responses between populations. As such, it is worth considering methodological issues that may explain contrasting findings.

Measurement methods of hormones can differ between studies. The 2 most common methods deployed currently are radioimmunoassay and ELISA. However, these techniques can exhibit differences in detection. For example, Prudom et al [196] showed greater sensitivity to postprandial changes in

acyl- and des-acyl ghrelin with sandwich ELISA assays, compared with radioimmunoassay, which was attributed to greater specificity. Assay specificity is particularly problematic when measuring CCK due to the likelihood of cross-reactivity of antibodies with gastrin [197]. Consequently, the lack of specificity of CCK assays, and hence the validity of some study findings, has been questioned [198]. While reliable assays with high-specificity antibodies have been developed, the discontinuation of such assay kits has presented further challenges to obtaining accurate measures of CCK. Authors are therefore encouraged to state characteristics of assays used, such as specificity, especially when measuring CCK. For authors, it is necessary to critically consider measurement method when evaluating differences in study findings, and CCK measures should be interpreted with caution. High-performance liquid/gas chromatography—mass spectrometry methods are less commonly adopted for the detection and quantification of gut hormones in plasma. These approaches do present the potential to measure hormones for which effective assays are of low availability, such as CCK and oxyntomodulin; but detection limits and specificity issues remain [198]. While good specificity and detection limits have been demonstrated for hormones such as PYY [199] and differing forms of ghrelin [200], the adoption of mass spectrometry is limited due to complexity and cost.

Conclusions and Research Priorities

Evidence reviewed here demonstrates that appetite-related gut hormone concentrations, in the fasting state and in response to feeding, are not constant across the life course. There are age-related changes, from the very first days of life until later

years, perhaps reflecting energy requirements. Such changes are summarized in Fig. 2. During periods of rapid growth and development, in the early days of life and through puberty, ghrelin response to feeding appears attenuated, possibly to favor energy intake to support growth. A similar attenuated appetite-related gut hormone response may also be present in preparation for and during pregnancy to favor energy intake; however, this requires further investigation, especially in the postprandial period. Sex differences also warrant further exploration, with specific attention to the stage of the menstrual cycle to distinguish between sex differences, per se, and those underpinned by stage of the menstrual cycle.

Dysregulation in the form of a blunted response of ghrelin and anorexigenic hormones is seen in both children and adults with excess adiposity, which likely contributes to energy surplus and weight gain. However, further longitudinal studies are required to confirm this causal relationship. Changes in gut hormones certainly appear to occur during calorie restriction, opposing an energy deficit and making sustained weight loss difficult. However, this may not be the case with exercise-induced energy deficit. This should be considered when planning weight management strategies.

It is now clear that some, but not all, older adults experience augmented responses of appetite-related gut hormones to feeding. While this may also coincide with a reduction in energy requirements in later life, this is a less advantageous adaptation, resulting in an increased risk of undernutrition. Although this has been observed in those over 65 years, what remains to be identified is at what age this dysregulation in hormonal response to feeding starts to occur. A better understanding of the onset of such an augmented appetite-related gut hormone response will help inform future interventions to delay or manage anorexia of aging.

Finally, with most if not all of these age- or stage of life-related alterations in appetite-related gut hormones, the underlying mechanisms are not known. Future studies should explore nutrient-gut interactions—such as but not limited to the luminal environment, nutrient receptor number and activity, and EEC cellular signaling—in greater depth to elucidate the mechanisms underpinning periods of attenuated or augmented appetite-related gut hormone responses to feeding.

Funding

No sources of external funding.

Author Contributions

A.H. conceived and structured the review. All authors conducted the literature review and wrote the manuscript. A.H. and D.C. edited the manuscript. All authors approved the final version.

Disclosures

The authors declare no conflict of interest.

Data Availability

Not applicable.

References

- Gribble FM, Reimann F. Enteroendocrine cells: chemosensors in the intestinal epithelium. *Annu Rev Physiol*. 2016;78(1):277-299.
- Ly T, Oh JY, Sivakumar N, *et al*. Sequential appetite suppression by oral and visceral feedback to the brainstem. *Nature*. 2023;624(7990):130-137.
- D'Agostino G, Luckman SM. Brainstem peptides and peptidergic neurons in the regulation of appetite. *Curr Opin Endocr Metab Res*. 2022;24:100339.
- Dagbasi A, Fuller A, Hanyaloglu AC, *et al*. The role of nutrient sensing dysregulation in anorexia of ageing: the little we know and the much we don't. *Appetite*. 2024;203(6):107718.
- Gribble FM, Reimann F. Nutrient sensing in the gut and the regulation of appetite. *Curr Opin Endocr Metab Res*. 2022;23:100318.
- Parker HE, Gribble FM, Reimann F. The role of gut endocrine cells in control of metabolism and appetite. *Exp Physiol*. 2014;99(9):1116-1120.
- Nunez-Salces M, Li H, Feinle-Bisset C, Young RL, Page AJ. The regulation of gastric ghrelin secretion. *Acta Physiologica*. 2021;231(3):e13588.
- Wren AM, Bloom SR. Gut hormones and appetite control. *Gastroenterology*. 2007;132(6):2116-2130.
- Gibbs J, Young RC, Smith GP. Cholecystokinin decreases food intake in rats. *J Comp Physiol Psychol*. 1973;84(3):488-495.
- Kissileff HR, Pi-Sunyer FX, Thornton J, Smith GP. C-terminal octapeptide of cholecystokinin decreases food intake in man. *Am J Clin Nutr*. 1981;34(2):154-160.
- Liddle RA, Goldfine ID, Rosen MS, Taplitz RA, Williams JA. Cholecystokinin bioactivity in human plasma. Molecular forms, responses to feeding, and relationship to gallbladder contraction. *J Clin Invest*. 1985;75(4):1144-1152.
- Batterham RL, Cowley MA, Small CJ, *et al*. Gut hormone PYY(3-36) physiologically inhibits food intake. *Nature*. 2002;418(6898):650-654.
- Gutzwiller J-P, Göke B, Drewe J, *et al*. Glucagon-like peptide-1: a potent regulator of food intake in humans. *Gut*. 1999;44(1):81-86.
- Tan T, Behary P, Tharakan G, *et al*. The effect of a subcutaneous infusion of GLP-1, OXM, and PYY on energy intake and expenditure in obese volunteers. *J Clin Endocrinol Metab*. 2017;102(7):2364-2372.
- Latorre R, Sternini C, De Giorgio R, Greenwood-Van Meerveld B. Enteroendocrine cells: a review of their role in brain-gut communication. *Neurogastroenterol Motil*. 2016;28(5):620-630.
- Adrian TE, Savage AP, Sagor GR, *et al*. Effect of peptide YY on gastric, pancreatic, and biliary function in humans. *Gastroenterology*. 1985;89(3):494-499.
- Nicolaus M, Brödl J, Linke R, Woerle H-J, Göke B, Schirra J Jr. Endogenous GLP-1 regulates postprandial glycemia in humans: relative contributions of insulin, glucagon, and gastric emptying. *J Clin Endocrinol Metab*. 2011;96(1):229-236.
- Vollmer K, Holst JJ, Baller B, *et al*. Predictors of incretin concentrations in subjects with normal, impaired, and diabetic glucose tolerance. *Diabetes*. 2008;57(3):678-687.
- Wren AM, Seal LJ, Cohen MA, *et al*. Ghrelin enhances appetite and increases food intake in humans. *J Clin Endocrinol Metab*. 2001;86(12):5992.
- Cummings DE, Frayo RS, Marmonier C, Aubert R, Chapelot D. Plasma ghrelin levels and hunger scores in humans initiating meals voluntarily without time- and food-related cues. *Am J Physiol Endocrinol Metab*. 2004;287(2):E297-E304.
- Date Y, Kojima M, Hosoda H, *et al*. Ghrelin, a novel growth hormone-releasing acylated peptide, is synthesized in a distinct endocrine cell type in the gastrointestinal tracts of rats and humans. *Endocrinology*. 2000;141(11):4255-4261.

22. Munding TO, Cummings DE, Taborsky GJ Jr. Direct stimulation of ghrelin secretion by sympathetic nerves. *Endocrinology*. 2006;147(6):2893-2901.
23. Veedfald S, Plamboeck A, Hartmann B, et al. Ghrelin secretion in humans—a role for the vagus nerve? *Neurogastroenterol Motil*. 2018;30(6):e13295.
24. Monteleone P, Bencivenga R, Longobardi N, Serritella C, Maj M. Differential responses of circulating ghrelin to high-fat or high-carbohydrate meal in healthy women. *J Clin Endocrinol Metab*. 2003;88(11):5510-5514.
25. Callahan HS, Cummings DE, Pepe MS, Breen PA, Matthys CC, Weigle DS. Postprandial suppression of plasma ghrelin level is proportional to ingested caloric load but does not predict inter-meal interval in humans. *J Clin Endocrinol Metab*. 2004;89(3):1319-1324.
26. Brennan IM, Otto B, Feltrin KL, Meyer JH, Horowitz M, Feinle-Bisset C. Intravenous CCK-8, but not GLP-1, suppresses ghrelin and stimulates PYY release in healthy men. *Peptides*. 2007;28(3):607-611.
27. Batterham RL, Cohen MA, Ellis SM, et al. Inhibition of food intake in obese subjects by peptide YY₃₋₃₆. *N Engl J Med*. 2003;349(10):941-948.
28. Saad MF, Bernaba B, Hwu CM, et al. Insulin regulates plasma ghrelin concentration. *J Clin Endocrinol Metab*. 2002;87(8):3997-4000.
29. Edholm OG, Fletcher JG, Widdowson EM, McCance RA. The energy expenditure and food intake of individual men. *Br J Nutr*. 1955;9(3):286-300.
30. Edholm OG, Adam JM, Healy MJR, Wolff HS, Goldsmith R, Best TW. Food intake and energy expenditure of army recruits. *Br J Nutr*. 1970;24(4):1091-1107.
31. Mayer J, Roy P, Mitra KP. Relation between caloric intake, body weight, and physical work: studies in an industrial male population in West Bengal. *Am J Clin Nutr*. 1956;4(2):169-175.
32. Beaulieu K, Hopkins M, Blundell J, Finlayson G. Does habitual physical activity increase the sensitivity of the appetite control system? A systematic review. *Sports Med*. 2016;46(12):1897-1919.
33. Blundell JE. Physical activity and appetite control: can we close the energy gap? *Nutr Bull*. 2011;36(3):356-366.
34. Beaulieu K, Hopkins M, Blundell J, Finlayson G. Homeostatic and non-homeostatic appetite control along the spectrum of physical activity levels: an updated perspective. *Physiol Behav*. 2018;192:23-29.
35. Lowe MR, Butryn ML. Hedonic hunger: a new dimension of appetite? *Physiol Behav*. 2007;91(4):432-439.
36. Finlayson G, Dalton M. Hedonics of food consumption: are food 'liking' and 'wanting' viable targets for appetite control in the obese? *Curr Obes Rep*. 2012;1(1):42-49.
37. Speakman JR, Elmquist JK. Obesity: an evolutionary context. *Life Metab*. 2022;1(1):10-24.
38. Sloth B, Holst JJ, Flint A, Gregersen NT, Astrup A. Effects of PYY1-36 and PYY3-36 on appetite, energy intake, energy expenditure, glucose and fat metabolism in obese and lean subjects. *Am J Physiol Endocrinol Metab*. 2007;292(4):E1062-E1068.
39. Schmidt JB, Gregersen NT, Pedersen SD, et al. Effects of PYY3-36 and GLP-1 on energy intake, energy expenditure, and appetite in overweight men. *Am J Physiol Endocrinol Metab*. 2014;306(11):E1248-E1256.
40. Verdich C, Flint A, Gutzwiller J-P, et al. A meta-analysis of the effect of glucagon-like peptide-1 (7-36) amide on ad libitum energy intake in humans. *J Clin Endocrinol Metab*. 2001;86(9):4382-4389.
41. Dagbasi A, Warner J, Catterall V, et al. Augmented gut hormone response to feeding in older adults exhibiting low appetite. *Appetite*. 2024;201:107415.
42. Giezenaar C, Hutchison AT, Luscombe-Marsh ND, Chapman I, Horowitz M, Soenen S. Effect of age on blood glucose and plasma insulin, glucagon, ghrelin, CCK, GIP, and GLP-1 responses to whey protein ingestion. *Nutrients*. 2017;10(1):2.
43. Brennan IM, Luscombe-Marsh ND, Seimon RV, et al. Effects of fat, protein, and carbohydrate and protein load on appetite, plasma cholecystokinin, peptide YY, and ghrelin, and energy intake in lean and obese men. *Am J Physiol Gastrointest Liver Physiol*. 2012;303(1):G129-G140.
44. Hutchison AT, Piscitelli D, Horowitz M, et al. Acute load-dependent effects of oral whey protein on gastric emptying, gut hormone release, glycemia, appetite, and energy intake in healthy men. *Am J Clin Nutr*. 2015;102(6):1574-1584.
45. van der Klaauw AA, Keogh JM, Henning E, et al. High protein intake stimulates postprandial GLP1 and PYY release. *Obesity (Silver Spring)*. 2013;21(8):1602-1607.
46. Korner J, Inabnet W, Conwell IM, et al. Differential effects of gastric bypass and banding on circulating gut hormone and leptin levels. *Obesity (Silver Spring)*. 2006;14(9):1553-1561.
47. Holliday A, Warner J, Hulston CJ, Corfe BM, Crabtree DR. Anorexia of ageing is associated with elevated fasted and lower post-prandial ghrelin, independent of ghrelin O-acyltransferase. *Appetite*. 2024;196:107259.
48. Salbe AD, Tschöp MH, DelParigi A, Venti CA, Tataranni PA. Negative relationship between fasting plasma ghrelin concentrations and ad libitum food intake. *J Clin Endocrinol Metab*. 2004;89(6):2951-2956.
49. Svane MS, Jørgensen NB, Bojsen-Møller KN, et al. Peptide YY and glucagon-like peptide-1 contribute to decreased food intake after Roux-en-Y gastric bypass surgery. *Int J Obes*. 2016;40(11):1699-1706.
50. Basolo A, Heinitz S, Stinson EJ, et al. Fasting glucagon-like peptide 1 concentration is associated with lower carbohydrate intake and increases with overeating. *J Endocrinol Invest*. 2019;42(5):557-566.
51. Little TJ, Feltrin KL, Horowitz M, et al. A high-fat diet raises fasting plasma CCK but does not affect upper gut motility, PYY, and ghrelin, or energy intake during CCK-8 infusion in lean men. *Am J Physiol Regul Integr Comp Physiol*. 2008;294(1):R45-R51.
52. Ronveaux CC, de Lartigue G, Raybould HE. Ability of GLP-1 to decrease food intake is dependent on nutritional status. *Physiol Behav*. 2014;135:222-229.
53. Holst JJ, Madsbad S, Bojsen-Møller KN, et al. Mechanisms in bariatric surgery: gut hormones, diabetes resolution, and weight loss. *Surg Obes Relat Dis*. 2018;14(5):708-714.
54. Steinert RE, Feinle-Bisset C, Asarian L, Horowitz M, Beglinger C, Geary N. Ghrelin, CCK, GLP-1, and PYY(3-36): secretory controls and physiological roles in eating and glycemia in health, obesity, and after RYGB. *Physiol Rev*. 2017;97(1):411-463.
55. Vilsbøll T, Christensen M, Junker AE, Knop FK, Gluud LL. Effects of glucagon-like peptide-1 receptor agonists on weight loss: systematic review and meta-analyses of randomised controlled trials. *BMJ*. 2012;344:d7771.
56. Martins C, Dutton GR, Hunter GR, Gower BA. Revisiting the compensatory theory as an explanatory model for relapse in obesity management. *Am J Clin Nutr*. 2020;112(5):1170-1179.
57. Rogol AD, Clark PA, Roemmich JN. Growth and pubertal development in children and adolescents: effects of diet and physical activity. *Am J Clin Nutr*. 2000;72(2):521S-528S.
58. Abbassi V. Growth and normal puberty. *Pediatrics*. 1998;102(Supplement_3):507-511.
59. Gallagher D, Andres A, Fields DA, et al. Body composition measurements from birth through 5 years: challenges, gaps, and existing & emerging technologies—a national institutes of health workshop. *Obes Rev*. 2020;21(8):e13033.
60. Torun B. Energy requirements of children and adolescents. *Public Health Nutr*. 2005;8(7a):968-993.
61. Horner K, Lee S. Appetite-related peptides in childhood and adolescence: role of ghrelin, PYY, and GLP-1. *Appl Physiol Nutr Metab*. 2015;40(11):1089-1099.
62. Bellone S, Baldelli R, Radetti G, et al. Ghrelin secretion in preterm neonates progressively increases and is refractory to the inhibitory

- effect of food intake. *J Clin Endocrinol Metab.* 2006;91(5):1929-1933.
63. Hübler A, Rippel C, Kauf E, *et al.* Associations between ghrelin levels in serum of preterm infants and enteral nutritional state during the first 6 months after birth. *Clin Endocrinol (Oxf).* 2006;65(5):611-616.
 64. Iñiguez GN, Ong K, Peña V, Avila A, Dunger D, Mericq V. Fasting and post-glucose ghrelin levels in SGA infants: relationships with size and weight gain at one year of age. *J Clin Endocrinol Metab.* 2002;87(12):5830-5833.
 65. Bellone S, Castellino N, Broglio F, *et al.* Ghrelin secretion in childhood is refractory to the inhibitory effect of feeding. *J Clin Endocrinol Metab.* 2004;89(4):1662-1665.
 66. Lomenick JP, Clasey JL, Anderson JW. Meal-related changes in ghrelin, peptide YY, and appetite in normal weight and overweight children. *Obesity (Silver Spring).* 2008;16(3):547-552.
 67. Bizzarri C, Rigamonti AE, Luce A, *et al.* Children with Prader-Willi syndrome exhibit more evident meal-induced responses in plasma ghrelin and peptide YY levels than obese and lean children. *Eur J Endocrinol.* 2010;162(3):499-505.
 68. Bacha F, Arslanian SA. Ghrelin suppression in overweight children: a manifestation of insulin resistance? *J Clin Endocrinol Metab.* 2005;90(5):2725-2730.
 69. Baldelli R, Bellone S, Castellino N, *et al.* Oral glucose load inhibits circulating ghrelin levels to the same extent in normal and obese children. *Clin Endocrinol (Oxf).* 2006;64(3):255-259.
 70. Maffei C, Bonadonna RC, Consolaro A, *et al.* Ghrelin, insulin sensitivity and postprandial glucose disposal in overweight and obese children. *Eur J Endocrinol.* 2006;154(1):61-68.
 71. Lomenick JP, Melguizo MS, Mitchell SL, Summar ML, Anderson JW. Effects of meals high in carbohydrate, protein, and fat on ghrelin and peptide YY secretion in prepubertal children. *J Clin Endocrinol Metab.* 2009;94(11):4463-4471.
 72. Gil-Campos M, Aguilera CM, Ramirez-Tortosa MC, Cañete R, Gil A. Fasting and postprandial relationships among plasma leptin, ghrelin, and insulin in prepubertal obese children. *Clin Nutr.* 2010;29(1):54-59.
 73. Önnertfalt J, Erlanson-Albertsson C, Montelius C, Thorngren-Jerneck K. Obese children aged 4–6 displayed decreased fasting and postprandial ghrelin levels in response to a test meal. *Acta Paediatr.* 2018;107(3):523-528.
 74. Prodam F, Monzani A, Ricotti R, *et al.* Systematic review of ghrelin response to food intake in pediatric age, from neonates to adolescents. *J Clin Endocrinol Metab.* 2014;99(5):1556-1568.
 75. Stock S, Lechner P, Wong ACK, *et al.* Ghrelin, peptide YY, glucose-dependent insulinotropic polypeptide, and hunger responses to a mixed meal in anorexic, obese, and control female adolescents. *J Clin Endocrinol Metab.* 2005;90(4):2161-2168.
 76. Prodam F, Trovato L, Demarchi I, *et al.* Unacylated, acylated ghrelin and obestatin levels are differently inhibited by oral glucose load in pediatric obesity: association with insulin sensitivity and metabolic alterations. *E Spen Eur E J Clin Nutr Metab.* 2011;6(3):e109-e115.
 77. Ellis AC, Casazza K, Chandler-Laney P, Gower BA. Higher postprandial serum ghrelin among African-American girls before puberty. *J Pediatr Endocrinol Metab.* 2012;25(7-8):691-696.
 78. Patel BP, Anderson GH, Vien S, Bellissimo N, McCrindle BW, Hamilton JK. Obesity, sex and pubertal status affect appetite hormone responses to a mixed glucose and whey protein drink in adolescents. *Clin Endocrinol (Oxf).* 2014;81(1):63-70.
 79. Nguo K, Bonham MP, Truby H, Barber E, Brown J, Huggins CE. Effect of macronutrient composition on appetite hormone responses in adolescents with obesity. *Nutrients.* 2019;11(2):340.
 80. Noer ER, Dewi L, Kuo C-H. Fermented soybean enhances post-meal response in appetite-regulating hormones among Indonesian girls with obesity. *Obes Res Clin Pract.* 2021;15(4):339-344.
 81. Nguo K, Walker KZ, Bonham MP, Huggins CE. Systematic review and meta-analysis of the effect of meal intake on postprandial appetite-related gastrointestinal hormones in obese children. *Int J Obes.* 2016;40(4):555-563.
 82. Uvnäs-Moberg K, Marchini G, Winberg J. Plasma cholecystokinin concentrations after breast feeding in healthy 4 day old infants. *Arch Dis Child.* 1993;68(1 Spec No):46-48.
 83. Tomasić P, Sztefko K, Starzyk J. Entero-insular axis in children with simple obesity. *Pediatr Endocrinol Diabetes Metab.* 2009;15(2):63-69.
 84. Adrian TE, Smith HA, Calvert SA, Aynsley-Green A, Bloom SR. Elevated plasma peptide YY in human neonates and infants. *Pediatr Res.* 1986;20(12):1225-1227.
 85. Siahianidou T, Mandyla H, Vounatsou M, Anagnostakis D, Papassotiropoulos I, Chrousos GP. Circulating peptide YY concentrations are higher in preterm than full-term infants and correlate negatively with body weight and positively with serum ghrelin concentrations. *Clin Chem.* 2005;51(11):2131-2137.
 86. Kawamata R, Suzuki Y, Yada Y, *et al.* Gut hormone profiles in preterm and term infants during the first 2 months of life. *J Pediatr Endocrinol Metab.* 2014;27(7-8):717-723.
 87. Mittelman SD, Klier K, Braun S, Azen C, Geffner ME, Buchanan TA. Obese adolescents show impaired meal responses of the appetite-regulating hormones ghrelin and PYY. *Obesity (Silver Spring).* 2010;18(5):918-925.
 88. Misra M, Tsai PM, Mendes N, Miller KK, Klibanski A. Increased carbohydrate induced ghrelin secretion in obese vs. normal-weight adolescent girls. *Obesity (Silver Spring).* 2009;17(9):1689-1695.
 89. Lomenick JP, White JR, Smart EJ, Clasey JL, Anderson JW. Glucagon-like peptide 1 and pancreatic polypeptide responses to feeding in normal weight and overweight children. *J Pediatr Endocrinol Metab.* 2009;22(6):493-500.
 90. Handgraaf S, Philippe J. The role of sexual hormones on the entero-insular axis. *Endocr Rev.* 2019;40(4):1152-1162.
 91. Beglinger S, Meyer-Gerspach AC, Graf S, *et al.* Effect of a test meal on meal responses of satiation hormones and their association to insulin resistance in obese adolescents. *Obesity (Silver Spring).* 2014;22(9):2047-2052.
 92. Chanoine J-P, Mackelvie KJ, Barr SI, Wong ACK, Meneilly GS, Elahi DH. GLP-1 and appetite responses to a meal in lean and overweight adolescents following exercise. *Obesity (Silver Spring).* 2008;16(1):202-204.
 93. Velásquez-Mieyer PA, Cowan PA, Pérez-Faustinelli S, *et al.* Racial disparity in glucagon-like peptide 1 and inflammation markers among severely obese adolescents. *Diabetes Care.* 2008;31(4):770-775.
 94. Takefuji Y. Impact of COVID-19 on mortality and excess mortality of midlife from 40 to 64 age groups. *Aging Health Res.* 2023;3(4):100167.
 95. Cao X, Yang G, Li X, *et al.* Weight change across adulthood and accelerated biological aging in middle-aged and older adults. *Am J Clin Nutr.* 2023;117(1):1-11.
 96. Jia P, Yuan J. Weight change patterns across adulthood in relation to osteoporosis and fracture among non-obese individuals. *Arch Osteoporos.* 2023;19(1):2.
 97. Public Health England. Scientific Advisory Committee on Nutrition: Dietary Reference Values for Energy. London, 2011. <https://www.gov.uk/government/publications/sacn-dietary-reference-values-for-energy>
 98. Crabtree DR, Buosi W, Fyfe CL, *et al.* Appetite control across the lifecycle: the acute impact of breakfast drink quantity and protein content. The Full4Health Project. *Nutrients.* 2020;12(12):3710.
 99. Douglas JA, King JA, Clayton DJ, *et al.* Acute effects of exercise on appetite, ad libitum energy intake and appetite-regulatory hormones in lean and overweight/obese men and women. *Int J Obesity (Lond).* 2017;41(12):1737-1744.
 100. Greenman Y, Golani N, Gilad S, Yaron M, Limor R, Stern N. Ghrelin secretion is modulated in a nutrient- and gender-specific manner. *Clin Endocrinol (Oxf).* 2004;60(3):382-388.

101. Tschöp M, Weyer C, Tataranni PA, Devanarayan V, Ravussin E, Heiman ML. Circulating ghrelin levels are decreased in human obesity. *Diabetes*. 2001;50(4):707-709.
102. Shiiya T, Nakazato M, Mizuta M, *et al*. Plasma ghrelin levels in lean and obese humans and the effect of glucose on ghrelin secretion. *J Clin Endocrinol Metab*. 2002;87(1):240-244.
103. Purnell JQ, Weigle DS, Breen P, Cummings DE. Ghrelin levels correlate with insulin levels, insulin resistance, and high-density lipoprotein cholesterol, but not with gender, menopausal status, or cortisol levels in humans. *J Clin Endocrinol Metab*. 2003;88(12):5747-5752.
104. Makovey J, Naganathan V, Seibel M, Sambrook P. Gender differences in plasma ghrelin and its relations to body composition and bone—an opposite-sex twin study. *Clin Endocrinol (Oxf)*. 2007;66(4):530-537.
105. Kim B-J, Carlson OD, Jang H-J, Elahi D, Berry C, Egan JM. Peptide YY is secreted after oral glucose administration in a gender-specific manner. *J Clin Endocrinol Metab*. 2005;90(12):6665-6671.
106. Carroll JF, Kaiser KA, Franks SF, Deere C, Caffrey JL. Influence of BMI and gender on postprandial hormone responses. *Obesity (Silver Spring)*. 2007;15(12):2974-2983.
107. Giezenaar C, Luscombe-Marsh ND, Hutchison AT, *et al*. Effect of gender on the acute effects of whey protein ingestion on energy intake, appetite, gastric emptying and gut hormone responses in healthy young adults. *Nutr Diabetes*. 2018;8(1):40.
108. Vaag AA, Holst JJ, Vølund A, Beck-Nielsen H. Gut incretin hormones in identical twins discordant for non-insulin-dependent diabetes mellitus (NIDDM)—evidence for decreased glucagon-like peptide 1 secretion during oral glucose ingestion in NIDDM twins. *Eur J Endocrinol*. 1996;135(4):425-432.
109. Yunker AG, Luo S, Jones S, *et al*. Appetite-Regulating hormones are reduced after oral sucrose vs glucose: influence of obesity, insulin resistance, and sex. *J Clin Endocrinol Metab*. 2020;106(3):654-664.
110. Cahill F, Ji Y, Wadden D, *et al*. The association of serum total peptide YY (PYY) with obesity and body fat measures in the CODING study. *PLoS One*. 2014;9(4):e95235.
111. Essah PA, Levy JR, Sistrun SN, Kelly SM, Nestler JE. Effect of macronutrient composition on postprandial peptide YY levels. *J Clin Endocrinol Metab*. 2007;92(10):4052-4055.
112. Asarian L, Geary N. Sex differences in the physiology of eating. *Am J Physiol Regul Integr Comp Physiol*. 2013;305(11):R1215-R1267.
113. Adam TC, Westerterp-Plantenga MS. Glucagon-like peptide-1 release and satiety after a nutrient challenge in normal-weight and obese subjects. *Br J Nutr*. 2005;93(6):845-851.
114. Buffenstein R, Poppitt SD, McDevitt RM, Prentice AM. Food intake and the menstrual cycle: a retrospective analysis, with implications for appetite research. *Physiol Behav*. 1995;58(6):1067-1077.
115. Brennan IM, Feltrin KL, Nair NS, *et al*. Effects of the phases of the menstrual cycle on gastric emptying, glycemia, plasma GLP-1 and insulin, and energy intake in healthy lean women. *Am J Physiol Gastrointest Liver Physiol*. 2009;297(3):G602-G610.
116. Benton MJ, Hutchins AM, Dawes JJ. Effect of menstrual cycle on resting metabolism: a systematic review and meta-analysis. *PLoS One*. 2020;15(7):e0236025.
117. Bisdee JT, James WPT, Shaw MA. Changes in energy expenditure during the menstrual cycle. *Br J Nutr*. 1989;61(2):187-199.
118. Bryant M, Truesdale KP, Dye L. Modest changes in dietary intake across the menstrual cycle: implications for food intake research. *Br J Nutr*. 2006;96(5):888-894.
119. Campolier M, Thondre SP, Clegg M, Shafat A, McIntosh A, Lightowler H. Changes in PYY and gastric emptying across the phases of the menstrual cycle and the influence of the ovarian hormones. *Appetite*. 2016;107:106-115.
120. Butte NF, King JC. Energy requirements during pregnancy and lactation. *Public Health Nutr*. 2005;8(7a):1010-1027.
121. Butte NF, Wong WW, Treuth MS, Ellis KJ, O'Brian Smith E. Energy requirements during pregnancy based on total energy expenditure and energy deposition. *Am J Clin Nutr*. 2004;79(6):1078-1087.
122. Clarke GS, Gatford KL, Young RL, Grattan DR, Ladyman SR, Page AJ. Maternal adaptations to food intake across pregnancy: central and peripheral mechanisms. *Obesity (Silver Spring)*. 2021;29(11):1813-1824.
123. Gunderson EP. Childbearing and obesity in women: weight before, during, and after pregnancy. *Obstet Gynecol Clin North Am*. 2009;36(2):317-332, ix.
124. Valsamakis G, Margeli A, Vitoratos N, *et al*. The role of maternal gut hormones in normal pregnancy: fasting plasma active glucagon-like peptide 1 level is a negative predictor of fetal abdomen circumference and maternal weight change. *Eur J Endocrinol*. 2010;162(5):897-903.
125. Mangliar IA, Plante A-S, Chabot M, *et al*. GLP-1 response during pregnancy: variations between trimesters and associations with appetite sensations and usual energy intake. *Appl Physiol Nutr Metab*. 2024;49(4):428-436.
126. Taylor VJ, Patterson M, Ghatei MA, Bloom SR, Wilson CA. Ghrelin and peptide YY (PYY) profiles in gastrointestinal tissues and the circulation of the rat during pregnancy and lactation. *Peptides*. 2009;30(12):2213-2220.
127. Frick G, Bremme K, Sjögren C, Lindén A, Uvnäs-Moberg K. Plasma levels of cholecystokinin and gastrin during the menstrual cycle and pregnancy. *Acta Obstet Gynecol Scand*. 1990;69(4):317-320.
128. Palik E, Baranyi E, Melczer Z, *et al*. Elevated serum acylated (biologically active) ghrelin and resistin levels associate with pregnancy-induced weight gain and insulin resistance. *Diabetes Res Clin Pract*. 2007;76(3):351-357.
129. Fuglsang J, Skjærbæk C, Espelund U, *et al*. Ghrelin and its relationship to growth hormones during normal pregnancy. *Clin Endocrinol (Oxf)*. 2005;62(5):554-559.
130. Tham E, Liu J, Innis S, *et al*. Acylated g glucagon-like peptide-1hrelin concentrations are markedly decreased during pregnancy in mothers with and without gestational diabetes: relationship with cholinesterase. *Am J Physiol Endocrinol Metab*. 2009;296(5):E1093-E1100.
131. Nakahara K, Nakagawa M, Baba Y, *et al*. Maternal ghrelin plays an important role in rat fetal development during pregnancy. *Endocrinology*. 2006;147(3):1333-1342.
132. Sodowski K, Zwirska-Korczala K, Kuka D, *et al*. Basal and postprandial gut peptides affecting food intake in lean and obese pregnant women. *J Physiol Pharmacol*. 2007;58 Suppl 1:37-52.
133. Lurati AR. Effects of menopause on appetite and the gastrointestinal system. *Nurs Womens Health*. 2018;22(6):499-505.
134. Karim R, Stanczyk FZ, Brinton RD, Rettberg J, Hodis HN, Mack WJ. Association of endogenous sex hormones with adipokines and ghrelin in postmenopausal women. *J Clin Endocrinol Metab*. 2015;100(2):508-515.
135. Wing RR, Matthews KA, Kuller LH, Meilahn EN, Plantinga PL. Weight gain at the time of menopause. *Arch Intern Med*. 1991;151(1):97-102.
136. Davis SR, Castelo-Branco C, Chedraui P, *et al*. Understanding weight gain at menopause. *Climacteric*. 2012;15(5):419-429.
137. Sowers MR, Wildman RP, Mancuso P, *et al*. Change in adipocytokines and ghrelin with menopause. *Maturitas*. 2008;59(2):149-157.
138. Matsubara M, Sakata I, Wada R, Yamazaki M, Inoue K, Sakai T. Estrogen modulates ghrelin expression in the female rat stomach. *Peptides*. 2004;25(2):289-297.
139. Clegg DJ, Brown LM, Zigman JM, *et al*. Estradiol-dependent decrease in the orexigenic potency of ghrelin in female rats. *Diabetes*. 2007;56(4):1051-1058.
140. Dafopoulos K, Chalvatzas N, Kosmas G, Kallitsaris A, Pournaras S, Messinis IE. The effect of estrogens on plasma ghrelin concentrations in women. *J Endocrinol Invest*. 2010;33(2):109-112.

141. Stojiljkovic-Drobnjak S, Fischer S, Arnold M, Langhans W, Ehlert U. Menopause is associated with decreased postprandial ghrelin, whereas a history of anorexia nervosa is associated with increased total ghrelin. *J Neuroendocrinol*. 2019;31(7):e12661.
142. Asarian L, Abegg K, Geary N, Schiesser M, Lutz TA, Bueter M. Estradiol increases body weight loss and gut-peptide satiation after Roux-en-Y gastric bypass in ovariectomized rats. *Gastroenterology*. 2012;143(2):325-327.e2.
143. Geary N, Trace D, McEwen B, Smith GP. Cyclic estradiol replacement increases the satiety effect of CCK-8 in ovariectomized rats. *Physiol Behav*. 1994;56(2):281-289.
144. Milewicz A, Bidzinska B, Mikulski E, Demissie M, Tworowska U. Influence of obesity and menopausal status on serum leptin, cholecystokinin, galanin and neuropeptide Y levels. *Gynecol Endocrinol*. 2000;14(3):196-203.
145. Santos-Marcos JA, Rangel-Zuñiga OA, Jimenez-Lucena R, et al. Influence of gender and menopausal status on gut microbiota. *Maturitas*. 2018;116:43-53.
146. Tucker LA, Parker K. 10-year weight gain in 13,802 US adults: the role of age, sex, and race. *J Obes*. 2022;2022(1):7652408.
147. Japas C, Knutsen S, Dehom S, Dos Santos H, Tonstad S. Body mass index gain between ages 20 and 40 years and lifestyle characteristics of men at ages 40–60 years: the Adventist Health Study-2. *Obes Res Clin Pract*. 2014;8(6):e549-e557.
148. Meyer-Gerspach AC, Wölnerhanssen B, Beglinger B, et al. Gastric and intestinal satiation in obese and normal weight healthy people. *Physiol Behav*. 2014;129:265-271.
149. Erdmann J, Lippl F, Wagenpfeil S, Schusdziarra V. Differential association of basal and postprandial plasma ghrelin with leptin, insulin, and type 2 diabetes. *Diabetes*. 2005;54(5):1371-1378.
150. le Roux CW, Patterson M, Vincent RP, Hunt C, Ghatgei MA, Bloom SR. Postprandial plasma ghrelin is suppressed proportional to meal caloric content in normal-weight but not obese subjects. *J Clin Endocrinol Metab*. 2005;90(2):1068-1071.
151. McLaughlin T, Abbasi F, Lamendola C, Frayo RS, Cummings DE. Plasma ghrelin concentrations are decreased in insulin-resistant obese adults relative to equally obese insulin-sensitive controls. *J Clin Endocrinol Metab*. 2004;89(4):1630-1635.
152. English PJ, Ghatgei MA, Malik IA, Bloom SR, Wilding JPH. Food fails to suppress ghrelin levels in obese humans. *J Clin Endocrinol Metab*. 2002;87(6):2984-2987.
153. Cummings DE, Weigle DS, Frayo RS, et al. Plasma ghrelin levels after diet-induced weight loss or gastric bypass surgery. *N Engl J Med*. 2002;346(21):1623-1630.
154. Aukan MI, Coutinho S, Pedersen SA, Simpson MR, Martins C. Differences in gastrointestinal hormones and appetite ratings between individuals with and without obesity—a systematic review and meta-analysis. *Obes Rev*. 2023;24(2):e13531.
155. Marzullo P, Caumo A, Savia G, et al. Predictors of postabsorptive ghrelin secretion after intake of different macronutrients. *J Clin Endocrinol Metab*. 2006;91(10):4124-4130.
156. Wang Y, Wu Q, Zhou Q, et al. Circulating acyl and des-acyl ghrelin levels in obese adults: a systematic review and meta-analysis. *Sci Rep*. 2022;12(1):2679.
157. Lean MEJ, Malkova D. Altered gut and adipose tissue hormones in overweight and obese individuals: cause or consequence? *Int J Obesity (Lond)*. 2016;40(4):622-632.
158. Sumithran P, Prendergast LA, Delbridge E, et al. Long-term persistence of hormonal adaptations to weight loss. *N Engl J Med*. 2011;365(17):1597-1604.
159. Hansen TK, Dall R, Hosoda H, et al. Weight loss increases circulating levels of ghrelin in human obesity. *Clin Endocrinol (Oxf)*. 2002;56(2):203-206.
160. DeBenedictis JN, Nymo S, Ollestad KH, et al. Changes in the homeostatic appetite system after weight loss reflect a normalization toward a lower body weight. *J Clin Endocrinol Metab*. 2020;105(7):e2538-e2546.
161. Reinehr T, Roth CL, Schernthaner G-H, Kopp H-P, Kriwanek S, Schernthaner G. Peptide YY and glucagon-like peptide-1 in morbidly obese patients before and after surgically induced weight loss. *Obes Surg*. 2007;17(12):1571-1577.
162. Moffett RC, Docherty NG, Le Roux CW. The altered enteroendocrine repertoire following Roux-en-Y-gastric bypass as an effector of weight loss and improved glycaemic control. *Appetite*. 2021;156:104807.
163. Jørgensen NB, Dirksen C, Bojsen-Møller KN, et al. Improvements in glucose metabolism early after gastric bypass surgery are not explained by increases in total bile acids and fibroblast growth factor 19 concentrations. *J Clin Endocrinol Metab*. 2015;100(3):E396-E406.
164. Patel KV, Coppin AK, Manini TM, et al. Midlife physical activity and mobility in older age: the InCHIANTI Study. *Am J Prev Med*. 2006;31(3):217-224.
165. Martins C, Robertson D, Morgan L. The effects of exercise on appetite control. In: Preedy VR, Watson RR, Martin CR, eds. *Handbook of Behavior, Food and Nutrition*. Springer; 2011: 1087-1105.
166. Martins C, Kulseng B, King NA, Holst JJ, Blundell JE. The effects of exercise-induced weight loss on appetite-related peptides and motivation to eat. *J Clin Endocrinol Metab*. 2010;95(4):1609-1616.
167. Guelfi KJ, Donges CE, Duffield R. Beneficial effects of 12 weeks of aerobic compared with resistance exercise training on perceived appetite in previously sedentary overweight and obese men. *Metabolism*. 2013;62(2):235-243.
168. Martins C, Kulseng B, Rehfeld JF, King NA, Blundell JE. Effect of chronic exercise on appetite control in overweight and obese individuals. *Med Sci Sports Exerc*. 2013;45(5):805-812.
169. Wilkinson DJ, Piasecki M, Atherton PJ. The age-related loss of skeletal muscle mass and function: measurement and physiology of muscle fibre atrophy and muscle fibre loss in humans. *Ageing Res Rev*. 2018;47:123-132.
170. Volpi E, Nazemi R, Fujita S. Muscle tissue changes with aging. *Curr Opin Clin Nutr Metab Care*. 2004;7(4):405-410.
171. Mitchell WK, Williams J, Atherton P, Larvin M, Lund J, Narici M. Sarcopenia, dynapenia, and the impact of advancing age on human skeletal muscle size and strength; a quantitative review. *Front Physiol*. 2012;3:260.
172. Porter MM, Vandervoort AA, Lexell J. Aging of human muscle: structure, function and adaptability. *Scand J Med Sci Sports*. 1995;5(3):129-142.
173. Velloso CP. Regulation of muscle mass by growth hormone and IGF-I. *Br J Pharmacol*. 2008;154(3):557-568.
174. Caspersen CJ, Pereira MA, Curran KM. Changes in physical activity patterns in the United States, by sex and cross-sectional age. *Med Sci Sports Exerc*. 2000;32(9):1601-1609.
175. Jones H, Millward P, Buraimo B. Adult Participation in Sport. 2011. https://assets.publishing.service.gov.uk/government/uploads/system/uploads/attachment_data/file/137986/tp-adult-participation-sport-analysis.pdf
176. Gulsvik AK, Thelle DS, Samuelsen SO, Myrstad M, Mowé M, Wyller TB. Ageing, physical activity and mortality—a 42-year follow-up study. *Int J Epidemiol*. 2011;41(2):521-530.
177. Soenen S, Chapman IM. Body weight, anorexia, and undernutrition in older people. *J Am Med Dir Assoc*. 2013;14(9):642-648.
178. Hengeveld LM, Boer JMA, Gaudreau P, et al. Prevalence of protein intake below recommended in community-dwelling older adults: a meta-analysis across cohorts from the PROMISS consortium. *J Cachexia Sarcopenia Muscle*. 2020;11(5):1212-1222.
179. Fukagawa NK, Bandini LG, Young JB. Effect of age on body composition and resting metabolic rate. *Am J Physiol Endocrinol Metab*. 1990;259(2):E233-E238.
180. Johnstone AM, Murison SD, Duncan JS, Rance KA, Speakman JR. Factors influencing variation in basal metabolic rate include fat-free mass, fat mass, age, and circulating thyroxine but not sex, circulating leptin, or triiodothyronine. *Am J Clin Nutr*. 2005;82(5):941-948.

181. Elia M, Ritz P, Stubbs RJ. Total energy expenditure in the elderly. *Eur J Clin Nutr.* 2000;54(S3):S92-S103.
182. Black AE, Coward WA, Cole TJ, Prentice AM. Human energy expenditure in affluent societies: an analysis of 574 doubly-labelled water measurements. *Eur J Clin Nutr.* 1996;50(2):72-92.
183. Baker C. Obesity Statistics. 2002. <https://researchbriefings.files.parliament.uk/documents/SN033336/SN033336.pdf>
184. Winter JE, MacInnis RJ, Wattanapenpaiboon N, Nowson CA. BMI and all-cause mortality in older adults: a meta-analysis. *Am J Clin Nutr.* 2014;99(4):875-890.
185. Javed AA, Aljied R, Allison DJ, Anderson LN, Ma J, Raina P. Body mass index and all-cause mortality in older adults: a scoping review of observational studies. *Obes Rev.* 2020;21(8):e13035.
186. Giezenaar C, Chapman I, Luscombe-Marsh N, Feinle-Bisset C, Horowitz M, Soenen S. Ageing is associated with decreases in appetite and energy intake—a meta-analysis in healthy adults. *Nutrients.* 2016;8(1):28.
187. Morley JE, Silver AJ. Anorexia in the elderly. *Neurobiol Aging.* 1988;9:9-16.
188. Landi F, Liperoti R, Russo A, *et al.* Association of anorexia with sarcopenia in a community-dwelling elderly population: results from the iSIRENTE study. *Eur J Nutr.* 2013;52(3):1261-1268.
189. Pilgrim AL, Baylis D, Jameson KA, *et al.* Measuring appetite with the simplified nutritional appetite questionnaire identifies hospitalised older people at risk of worse health outcomes. *J Nutr Health Aging.* 2016;20(1):3-7.
190. van der Meij BS, Wijnhoven HAH, Lee JS, *et al.* Poor appetite and dietary intake in community-dwelling older adults. *J Am Geriatr Soc.* 2017;65(10):2190-2197.
191. Malafarina V, Uriz-Otano F, Gil-Guerrero L, Iniesta R. The anorexia of ageing: physiopathology, prevalence, associated comorbidity and mortality. A systematic review. *Maturitas.* 2013;74(4):293-302.
192. Johnson KO, Shannon OM, Matu J, Holliday A, Ispoglou T, Deighton K. Differences in circulating appetite-related hormone concentrations between younger and older adults: a systematic review and meta-analysis. *Aging Clin Exp Res.* 2020;32(7):1233-1244.
193. Crabtree DR, Cox NJ, Lim SER, Holliday A. Enhancing the management of anorexia of ageing to counteract malnutrition: are physical activity guidelines optimal? *Aging Clin Exp Res.* 2023;35(2):427-431.
194. Lau S, Pek K, Chew J, *et al.* The Simplified Nutritional Appetite Questionnaire (SNAQ) as a screening tool for risk of malnutrition: optimal cutoff, factor structure, and validation in healthy community-dwelling older adults. *Nutrients.* 2020;12(9):2885.
195. Pot GK, Hardy R, Stephen AM. Irregular consumption of energy intake in meals is associated with a higher cardiometabolic risk in adults of a British birth cohort. *Int J Obesity (Lond).* 2014;38(12):1518-1524.
196. Prudom C, Liu J, Patrie J, *et al.* Comparison of competitive radioimmunoassays and two-site sandwich assays for the measurement and interpretation of plasma ghrelin levels. *J Clin Endocrinol Metab. glucagon-like peptide-1* 2010;95(5):2351-2358.
197. Rehfeld JF. Accurate measurement of cholecystokinin in plasma. *Clin Chem.* 1998;44(5):991-1001.
198. Rehfeld JF. Measurement of cholecystokinin in plasma with reference to nutrition related obesity studies. *Nutr Res.* 2020;76:1-8.
199. Xi L, Jin Y, Josh P, Parker EA, Herzog H, Colgrave M. A mass spectrometric assay for the quantification of neuropeptide PYY in plasma. *Anal Methods.* 2012;4(3):714-720.
200. Rauh M, Gröschl M, Rascher W. Simultaneous quantification of ghrelin and desacyl-ghrelin by liquid chromatography–tandem mass spectrometry in plasma, serum, and cell supernatants. *Clin Chem.* 2007;53(5):902-910.