



Data as a story : Exhibition Catalogue & Open Research Guide

April 2026

Curator and Editor Amie Longthorne

V1 04/26

Exhibition Graphic Design © Áine McCallion



creativecommons.org/licenses/by-nc-nd/4.0/ Funded by Open Library of Humanities (OLH)

Contents



04 Introduction

05 Pretty in Pink

Amanda Atkinson
**Stokely Carmichael
(Kwame Ture's) Year
of Black Power** Kate
Ballantyne

**06 Breaking the Silence
on Hygiene Poverty**

Susan Barry
**Drawing on Forced
Marriage** Hannah
Baumeister

**07 A Secret Affair:
Hidden Sacred Places
of the Irish Catholic
Mass** Hilary Bishop
**What Comes First
The 'Story' or The
Data?** Peter Blundell



**08 RNA Bioscience for
Participatory Alopecia
Research (RNA-PAR)**

Tracy Branagan,
Kehinde Ross and Loz
Tonge
**Growing Up with a
Parent in Prison** Lorna
Brookes

**09 Care for Coaches Colum
Cronin
Menstruation Matters**
Katherine Neary &
Gemma Dale

**10 LIPOSONIC: Hearing
Metabolism Ian Davies
PedaLEGOgy – Building
Forensic Concepts Brick
by Brick** Nick Dawney &
Louise Dawney

11 The Straight Story Philip
Denton
**Clarity, Complexity and
Corporate Voice in
Annual Reports** Ekaete
Efretuei

**12 Evolution of Birds from
Dinosaurs as seen from
their Footprints** Peter
Falkingham
**'We Are More than One
Story ... What's Yours?'**
Helena Gosling

**13 Crafting New Ways of
Working with the NHS**
Joshi Jariwala
Igam Ogam Patricia
Mackinnon-Day

**14 Queer(y)ing the Suit: A study
of the Queer Body in London
in the 1970s & 1980s
through Sartorial Expression**
Samantha Mai Barker
**Data with a Soul: Comparing
Culture, Community and
Change** Steve Nolan, Rafaela
Neiva & Pouria Motalebi

Contents

- 15** **Social Media Platforms to Capture Data** Shelley O'Connor
Sole-Zine Kayla and Paul Owen
- 16** **Sounds of the Natural World** Luiza Passos
Yes, We See You! Janette Porter
- 17** **Autophotography in the University City** Maike Potschulat
Performing Fatness: Poetic Re-presentations of Longitudinal Qualitative Data Lucinda Richardson
- 18** **Cocreating Inclusive Sensory Spaces to Improve Student Wellbeing across Campus** Libby Robinson
Negation in the Childbearing Continuum: An in depth Exploration of Women's Narratives in the UK Dr Jane Rooney
- 19** **Making Mari: A Visual Record of Coproducing Maternal Alcohol Resource and Information** Abi Rose
'Let's Talk Hope: Ending the Stigma around Suicide' Pooja Saini
- 20** **Rare Cancers, Physiotherapy and Wellbeing** Kay Standing
The William Roscoe Collection: Mapping what Remains Rachael Symonds, Mark Roughley, Dr Jose Prieto Garcia, Dr Kathryn Walchester, Samantha Cooper & Liberty Schofield
- 21** **Art in Immigration Detention** Jo Vincett
Portraying Death: Student Nurses Practice Learning Experiences of End-of-Life Care Viki Whaley
- 22** **Once Upon a Tummy: Storying Resistance and Inclusion with Children with Inflammatory Bowel Disease** Catherine Wilkinson , Jenna Rice & Charlotte Wood
Hills Of Tears Birge Yildirim Okta
- 23** **A Multiverse of Milky Way Galaxies** Andreea Font
Fruit Flies Dr Susi Zajitschek
- 24** **Open Research Guide**
- 28** **Acknowledgements**



Introduction

'Data as a Story'

A Research Data Exhibition - April 2026



'Data as a Story', is an exhibition showcasing the diverse and creative ways LJMU researchers and postgraduate researchers (PGRs) work with data. The exhibition brings together research from across the university. Each piece offers a glimpse into how researchers across LJMU understand and communicate their work — transforming data into something that tells a story, sparks curiosity, or reveals a new perspective. Why data? Why creativity? Researchers were invited to reflect on what makes their research data meaningful. Each contribution highlights the creative and narrative potential within research data.

This exhibition is supported by the Open Library of Humanities (OLH) and champions principles of FAIR data — ensuring that data is Findable, Accessible, Interoperable and Reusable. By showcasing how data is created, curated, and shared, the exhibition aims to make research more visible, inclusive, and open to everyone.

PRETTY IN PINK

By Amanda Atkinson

This piece highlights how brands and venues use feminine aesthetics and stereotypes to market alcohol and encourage nightlife attendance, and the mix of enjoyment and frustration women express in response. It showcases the 'essential items' promoted as necessary to perfect a 'girly' feminine identity in drinking spaces, along with the emotional and practical 'work' women described undertaking to meet these expectations. The 'basket' symbolises the pressure to consume—both products and alcohol—to participate in and enjoy this version of femininity on a night out. Many women felt compelled to keep up with these norms, noting the focus on pink, appearance, and consumption reinforces limiting gender stereotypes, trivialises women, and excludes those who do not conform. While nights out were primarily about bonding with friends, the pleasure of these experiences was undermined by the normalisation of unwanted sexual attention from men—represented in the piece by the rape alarm—highlighting a stark contrast between lived experiences and the carefree, glamorous imagery used in nightlife marketing.

STOKELY CARMICHAEL (KWAME TURE'S) YEAR OF BLACK POWER

By Kate Ballantyne

This piece maps the public speeches delivered by Stokely Carmichael (later Kwame Ture) during his early leadership of the Student Nonviolent Coordinating Committee (SNCC), spanning mid-1966 to June 1967. Carmichael is widely recognised as a prominent Black Power activist, this focused period reveals a more complex and dynamic figure within the civil rights movement. He delivered dozens of speeches in college auditoriums, churches, community centres and theatres across the United States and in Puerto Rico. In the broader historical context, these speeches highlight the continuity between civil rights activism and growing resistance to the Vietnam War, underscoring Carmichael's call for both Black and white students to organise, mobilise and take action. The dataset is presented as a large map marked with the locations of each speech, a visual representation of Carmichael's extensive grassroots reach. Kate Ballantyne is a historian of twentieth-century American activism whose research focuses on social movements, higher education and the long Black freedom struggle.

BREAKING THE SILENCE ON HYGIENE POVERTY

By Susan Barry

Drawing on coproduced knowledge about hygiene poverty and insecurity, the work transforms lived and shared realities into embodied, human stories. The exhibition uses visually engaging formats, including poetry, photography, audio recordings and installations such as soap bars inscribed with key themes, to communicate experiences that are often hidden or difficult to express. These creative approaches challenge stigma, and invite visitors to engage both emotionally and intellectually with issues that affect many yet remain rarely spoken about. By breaking the silence around hygiene insecurity, this initial phase of community-based participatory research aims to provoke reflection and spark conversation.

The research is led by Susan Barry, Senior Lecturer in Executive Education , Anthony Scott, Community Lead at Kitty's Launderette, a workers' community co-operative, Jess Swainson, Faculty Administrative Support Officer .

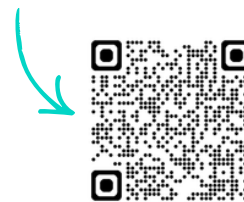


DRAWING ON FORCED MARRIAGE

By Hannah Baumeister

This piece centres on Drawing on an educational project addressing the global issue of forced marriage. In 2021, international agencies estimated that 22 million people were living in forced marriages worldwide, while the UK's Forced Marriage Unit supported around 800 cases in 2024. Recognising forced marriage as a human rights violation and acknowledging international calls for improved education, the project team developed an illustrated comic and teaching pack informed by real stories, academic research, and practitioner expertise. The resources explore different forms and drivers of forced marriage, its consequences, and the possibilities for resistance and intervention. The exhibition presents the comic alongside key findings from this evaluation.

Scan the QR code for additional details on the research project and data.



A SECRET AFFAIR: HIDDEN SACRED PLACES OF THE IRISH CATHOLIC MASS

By Hilary Bishop

Between 1695 and 1756, the Penal Laws sought to restrict the public practice of Catholicism in Ireland but failed to eliminate the faith or trigger widespread conversion. Despite the closure of Mass Houses and the appropriation of chapels, worship continued in secret at open-air Mass Rocks located in remote landscapes. Knowledge of these sacred sites survives through local oral tradition, ongoing geographical research documents and photographs, preserving access to places that are often difficult to reach.

Scan the QR code for additional details on the research project and data.



WHAT COMES FIRST THE 'STORY' OR THE 'DATA'?

By Peter Blundell

The piece is audio, creative diary entries and visual reflections that position the artist–author–researcher in relation to their work. Personal reflexivity sits alongside posthuman interpretation, creating an assemblage that challenges ideas of identity, centrality, and the boundaries between human and non-human meaning-making.

The project is led by qualitative researcher, Peter Blundell, psychotherapist, and experimental posthuman collage artist. Based in Liverpool, Peter's work is influenced by queer theory and critical posthumanist thought. This exhibition represents Peter's first physically displayed posthuman and post-qualitative assemblage, bringing together layered visual and written collage forms.

Scan the QR code for additional details on the research project and data.



RNA BIOSCIENCE FOR PARTICIPATORY ALOPECIA RESEARCH (RNA-PAR)

By Tracy Branagan, Kehinde Ross and Loz Tonge

This exhibit presents a curated, multi-modal representation of research data from the RNA Bioscience for Participatory Alopecia Research (RNA-PAR) project. The display brings together coproduced posters and report extracts, anonymised survey materials, and carefully selected material prompts to explore how early-stage RNA bioscience is understood, translated and experienced by people living with alopecia. Rather than displaying laboratory RNA data measurements, the installation focuses on how understanding, trust, meaning, and decision-making emerge when scientific research is made accessible and shaped through lived experience and Patient and Public Involvement and Engagement (PPIE). The physical items shown are explicitly framed not as data themselves but as translation tools used to support discussion and sense-making around largely non-physical datasets.

The project is delivered by Tracy Branagan, Kehinde Ross and Loz Tonge (PBS), an interdisciplinary team within the Institute for Health Research (IHR)

GROWING UP WITH A PARENT IN PRISON

By Lorna Brookes

This exhibit presents a selection of children's artwork created as part of research exploring the experiences of children and young people affected by parental imprisonment. The display aims to highlight the vital role that children play in educating wider society about their lived realities. The exhibition demonstrates how being heard, understood, and valued can significantly enhance their wellbeing. It also illustrates the importance of creative methods as a means for children to communicate experiences often shaped by trauma, isolation, and stigma.

The project is led by Dr Lorna Brookes, founder of Time-Matters UK and Associate Professor of Parental Imprisonment, she is joined by Dr Julie Carroll, Senior Lecturer in Art History.

Scan the QR code for additional details on the research project and data.



CARE FOR COACHES

By Colum Cronin

This piece originates from a UK Coaching-funded project conducted with a team of co-authors to explore the needs of coaches working across grassroots, developmental, and high-performance sport. Drawing on insights from a large-scale survey of coaches and follow-up interviews, the research examined the challenges, aspirations, and support requirements of those working within diverse coaching environments. Using creative non-fiction methods, the team produced a narrative report that includes an illustrative story 'Steve's Career' which are presented in this exhibition as a diary and trophy to highlight the lived experiences and emotional realities of coaching practice.

The project was led by Colum Cronin, Reader in Sport Coaching and Physical Education at Liverpool John Moores University. The work was supported by colleagues from LJMU—Francesca Champ, Matthew Gherardi, Amy Hardwick, Tabo Huntley, Colin Lewis, Gus Ryrrie, and Amy Whitehead—as well as external collaborators Fieke Rongen and David Tod, with overarching support from UK Coaching.

MENSTRUATION MATTERS

By Katherine Neary & Gemma Dale

This exhibit shares research undertaken at Liverpool John Moores University exploring how menstruation affects students' participation, wellbeing, academic experience, and attendance in higher education. The study, carried out with LJMU's student community, involved a mixed-methods approach combining a campus-wide survey with semi-structured interviews. The findings were used to develop a sketchnote displayed across campus, created to raise awareness among both students and staff. Its purpose was twofold: to highlight the significant impact menstruation can have on daily student life, and to help normalise conversations around menstruation, reducing the shame and stigma that often surround it.

The project is led by Senior Lecturers Gemma Dale and Katherine Neary from the LJMU Business School. Through this work, they aim to foster a more understanding, inclusive environment in which honest conversations about menstruation are welcomed and wellbeing is prioritised.

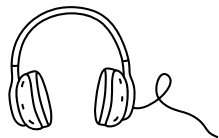
Scan the QR code for additional details on the research project and data.



LIPOSONIC: HEARING METABOLISM

By Ian Davies

This exhibit presents a soundscape derived from blood biomarker data generated through an NMR metabolomics dietary-intervention study. Each musical layer corresponds to a biological domain, allowing complex metabolic changes to be experienced as an evolving sonic landscape rather than through charts or numerical tables. Two dietary patterns are positioned across the stereo field: the left channel reflects a low-carbohydrate, high-fat diet, while the right represents a high-carbohydrate, low-fat pattern. Shared musical structures convey underlying physiological architecture, while subtle changes in timbre and motion capture the metabolic differences between diets. As you listen, different layers of sound slowly emerge, settle, and shift. Some elements feel grounded and heavy, others lighter and more open, while subtle movements unfold over time. There is no single way to listen, you may find your attention drawn to space, texture, or change, in whatever way feels natural. This work is based on real metabolic data measured from blood samples before and after dietary interventions.



PEDALEGOLOGY – BUILDING FORENSIC CONCEPTS

BRICK BY BRICK

By Nick Dawney & Louise Dawney

The team have developed a range of bespoke LEGO resources, including crime scene houses, DNA profiles, and model cells, helping students engage with complex scientific ideas through hands-on exploration. They deliver a series of LEGO-based educational workshops designed to introduce forensic science to Key Stage 3 and 4 learners.

This work forms part of the UKRI-funded Single Cell Analysis for DNA Identification, SCAnDi project. The project team includes Nick Dawney, LJMU, Louise Dawney LJMU, Lorna Dawson, James Hutton Institute, Katherine Brown, Portsmouth University and SCAnDi Principal Investigator Iain Macaulay, Earlham Institute.

Through this collaboration, the team has visited schools and science events across the UK, sharing their activities through blogs, posters, conference presentations, and workshops.

Scan the QR code for additional details on the research project and data.



THE STRAIGHT STORY

By Philip Denton

This piece explores the relationship between substrate structure and its rate of decomposition when catalysed by a kidney-derived enzyme. When the data are plotted as a simple scatter graph—reaction rate against a parameter describing substrate size and shape—the points appear randomly distributed. However, once the data are grouped according to specific structural features, subtle linear trends and hidden relationships emerge. These newly revealed patterns challenge long-held assumptions about how molecular structure influences reactivity in this system. The exhibition displays several images making these hidden patterns visible. The poster displays the raw scatter plot, alongside a sequence of images that progressively reveal the structural classifications—each highlighting how particular groups of molecules produce subtle yet meaningful trends.

The project is led by Phil, a Principal Lecturer in Physical Chemistry and National Teaching Fellow whose early-career research focused on structure–reactivity relationships—the foundation of the dataset presented here.

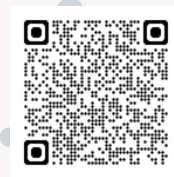
CLARITY, COMPLEXITY AND CORPORATE VOICE IN ANNUAL REPORTS

By Ekaete Efretuei

This exhibit consists of firm-year observations extracted from UK annual reports, with each entry representing a single company in a specific reporting year. It combines fundamental measures of text scale with two core interpretive metrics designed to analyse corporate narrative reporting. The first is readability, assessed using the Fog Index—a widely used metric in financial communication research, where higher scores indicate more complex and harder-to-read text. The second is tone, a sentiment-based score reflecting the overall positivity of the narrative language.

The project is led by Ekaete Efretuei, a researcher and educator whose work explores how data and analytical tools can illuminate decision-making and organisational outcomes.

Scan the QR code for additional details on the research project and data.



EVOLUTION OF BIRDS FROM DINOSAURS AS SEEN FROM THEIR FOOTPRINTS

By Peter Falkingham

The team presents a diverse collection of materials that showcase the study of animal locomotion across deep time. These include cadaveric specimens such as mummified bird feet, alongside casts of dinosaur feet and fossil footprints. Laboratory teaching materials, including sediment boxes containing preserved foot impressions, offer further insight into how tracks are formed as well as 3D-printed models—such as dinosaur bones and footprint replicas.

The research group is led by Professor Peter Falkingham, whose background in Biology, Geology, and Computer Science, funded through an ERC/UKRI grant on locomotor evolution, his team includes post-doctoral researchers Dr Andreas Jannel and Dr Ben Griffin, PhD student Rebecca Lowes, and technician Tash Prescott, who specialises in CT scanning and digitisation.

Scan the QR code for additional details on the research project and data.



‘WE ARE MORE THAN ONE STORY ... WHAT’S YOURS?’

By Helena Gosling

Visual minutes are displayed showcasing insights from their research and creative dissemination work with university students who have experience of the criminal justice system. The visual record highlights the challenges, complexities, and strengths present within these students’ educational journeys, translating spoken reflections and shared narratives into an accessible, engaging, and visually expressive format. Through stories of resilience, barriers, identity negotiation, and personal growth, the visual minutes illustrate how research-informed creative practice can make marginalised experiences more visible and better understood.

Helena Gosling is a Reader in Criminal Justice and Social Policy and member of the Centre for the Study of Crime, Criminalisation and Social Exclusion (CCSE) at Liverpool John Moores University (LJMU).

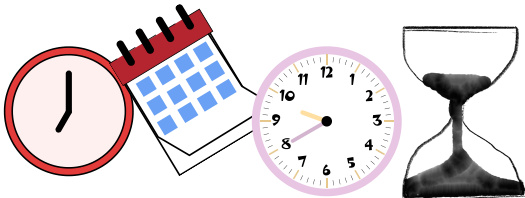


CRAFTING NEW WAYS OF WORKING IN THE NHS

By Joshi Jariwala

This piece presents findings from a qualitative study involving 35 dialogical interviews, translated into a series of creative artefacts. These pieces visualise the complexities of contemporary job roles and highlight the factors that shape how work is carried out. Central themes emerging from the data include time scarcity, cognitive headspace, identification and prioritisation of core tasks, financial pressures, autonomy, flexibility, co-creation with colleagues, and national mandates. The intuitive process of job crafting involves job holders reshaping aspects of their roles to better align with personal needs and preferences.

The research is led by a senior lecturer with over 20 years' experience as a senior HR practitioner and almost a decade in academia. Their DBA study is exploring how HR and organisational development practitioners can facilitate or hinder job crafting within the NHS.



IGAM OGAM

By Patricia MacKinnon-Day

Igam Ogam is an experimental research project that explores the relationship between bee societies and human communities through a multi-sensory, interdisciplinary approach involving sound, film, and physical materials associated with bees.

Patricia MacKinnon-Day is an Honorary Visiting Research Fellow from the Liverpool School of Art and Creative Industries.

Scan the QR code for additional details on the research project and data.



QUEER(Y)ING THE SUIT: A STUDY OF THE QUEER BODY IN LONDON IN THE 1970 & 1980S THROUGH SARTORIAL EXPRESSION

By Samantha Mai Barker

This qualitative dataset comprises photographs of tailored garments and visual records of suit styles, alongside narrative data generated through interviews and focus groups. Participants contributed images or personal garments and shared the memories, feelings and experiences associated with them. These written stories reveal how clothing operated as a powerful language of identity, resilience and self-presentation at a time when queer lives were marginalised and policed. The project explores the wardrobes of everyday people in queer communities, focusing particularly on tailored suits worn in England during the 1970s and 1980s. Within queer communities, the suit became a flexible cultural tool, able to challenge both heteronormative expectations and to subtly navigate, mimic, or resist them.

The project is led by Samantha, a researcher whose work examines the relationship between clothing, embodiment and twentieth-century cultural histories. She is currently pursuing a PhD in this field.

A COMPARATIVE EVALUATION ACROSS LIVERPOOL CITY REGION

By Steve Nolan , Rafaela Neiva & Pouria Motalebi

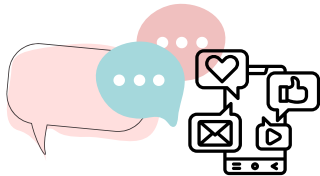
This project presents a comparative analysis of the Liverpool City Region's Borough of Culture programme (2019–2022), a place-based cultural policy initiative designed to support economic growth, community engagement, and wellbeing through culture. The research explores how cultural investment is implemented across four boroughs: Wirral, Sefton, Halton, and Knowsley. Wirral (2019) demonstrated strong economic and visitor impacts, generating significant cultural participation and tourism activity. Sefton (2020) adapted rapidly to COVID-19 through digital and community-led cultural initiatives, maintaining engagement during crisis conditions. Halton (2021) emphasised grassroots participation, cultural spaces, and partnership development, strengthening local cultural ecosystems. Knowsley (2022) consolidated these developments through infrastructure investment, community engagement, and long-term cultural strategy. Overall, the programme demonstrates how localised cultural initiatives can generate economic, social, and institutional value, while highlighting the importance of adaptability, partnership working, and place-based cultural policy.

The project is led by PhD researcher Pouria Motalebi, working collaboratively with supervisors Dr Steve Nolan and Prof Rafaela Neiva Ganga.

SOCIAL MEDIA PLATFORMS TO CAPTURE DATA

By Shelley O'Connor

This exhibit presents a piece of artwork in poster format, created using data extracted from an ongoing PhD project exploring the doctoral journey through the lens of mental health. The research draws on discussions shared on Reddit, a global social media platform where PhD students anonymously express their challenges, emotions, and lived experiences. By analysing these naturally occurring online conversations, the project seeks to understand the pressures, expectations, and forms of support that shape doctoral study, while highlighting the realities often hidden behind academic achievement. The poster translates selected qualitative insights into a visual representation that captures the emotional landscape of the PhD experience—from stress, imposter feelings, and burnout to resilience, community, and peer support. By transforming social media data into artwork, the exhibit demonstrates how digital spaces can offer authentic and immediate reflections of student wellbeing, and how creative dissemination can make such experiences more visible, relatable, and accessible to wider audiences.



SOLE-ZINE

By Kayla and Paul Owen

This exhibition presents material from Sole-Zine, a poster-zine dedicated to documenting and archiving British trainer culture. The dataset includes the Sole-Zine compendium (Volumes 01–10) alongside a pair of 3D-printed Nike Air Max 95 trainers, graffitied with soundbites gathered from the '110' community. These artefacts formed part of 110 Voices, a 2025 retail installation exhibited at Block P, Liverpool. Volume 09 of Sole-Zine features the founders of the Block P Nike Air Max Archive store, and the 110 Voices project represents one strand of a broader, ongoing investigation into sneaker heritage, working-class identity, and the evolution of British trainer culture.

Sole-Zine is co-created by Dr Kayla Owen, an academic and fashion designer whose research focuses on preserving material processes within fashion, and Paul Owen, a practice-based researcher exploring how subcultural groups construct identity through style.

SOUNDS OF THE NATURAL WORLD

By Luiza Figueiredo Passos

This dataset features wildlife audio recordings captured across natural habitats in England, Scotland, Madagascar, and Brazil. With the exception of the English recordings, all material was collected in undisturbed environments over extended periods, ensuring minimal human presence and allowing for authentic documentation of animal behaviour. The dataset includes vocalisations from a wide range of species—birds, insects, primates, and amphibians—as well as ambient environmental sounds such as wind, rainfall, and forest movement. Together, these recordings offer a valuable insight into acoustic biodiversity and the sensory landscapes experienced by wild animals.

The project is led by Luiza F. Passos whose work focuses on animal welfare in relation to environmental stressors and conservation interventions.

Scan the QR code for additional details on the research project and data.



YES, WE SEE YOU!

By Janette Porter

A collaborative inclusion project providing a university experience for adults with learning disabilities. Adults with learning difficulties and disabilities (LD) continue to face significant barriers when accessing higher education, shaped by inaccessible teaching, stigma, and reduced expectations. Yes, We See You! was developed to challenge these barriers and offer Mencap members a meaningful, supported experience of university life. LJMU partnered with Mencap Liverpool & Sefton to deliver adapted teaching in Creative Writing, Sport, Relationship Education and Media Literacy. Forty-four participants graduated, gaining new skills, confidence, and friendships.

The project is led by Janette Porter, Lecturer in Education, LJMU; Principal Investigator, Harriet Fuest, Postgraduate Researcher and sessional teacher in Media, Culture and Communications, LJMU, and Janine Melvin Project Officer, Faculty of Society and Culture, LJMU and Mencap volunteer. This project was funded by LJMU's Diversity and Inclusion Fund.

Scan the QR code for additional details on the research project and data.



AUTOPHOTOGRAPHY IN THE UNIVERSITY CITY

By Maike Potschulat

Presented here is a data set from an autophotography project that explored how undergraduate students make sense of their university city. Autophotography is a method that combines participant photography with research interviews to contextualise the meaning of the images. The exhibit shows a large selection of the submitted photographs, some also in connection with their quotes from the interviews. For the research project, the images in conjunction with the transcripts provided a rich data set that gave a detailed sense of meaningful practice and the spaces in which they occur. The research was conducted at time when the commodification of student culture became increasingly tangible in Liverpool via the development of new 'luxury' student accommodation and a large number of student-targeting nightlife, entertainment, and hospitality offers. The research provided a candid picture of student culture and revealed conflicting pressures on undergraduate students in their struggle to achieve a normative 'student experience' that also heavily implicated the urban environment.

PERFORMING FATNESS: POETIC RE-PRESENTATIONS OF LONGITUDINAL QUALITATIVE DATA

By Lucinda Richardson

This exhibit presents data from a completed longitudinal qualitative PhD study examining the lived experiences of women inhabiting fat bodies. The research generated a rich, multilayered dataset comprising semi-structured interviews, asynchronous written correspondence, and reflexive self-study material produced by the researcher throughout the project. Eight women contributed detailed narrative accounts capturing their everyday experiences of fatness, stigma, and social judgement across public, private, and relational contexts. The dataset places strong emphasis on embodiment, temporality, and emotional experience. It documents both the frontstage and backstage aspects of identity work, revealing the ways in which women navigate moral surveillance, impression management, and the pressures of a socially 'spoiled' identity.

Lucinda is Programme Leader in Nutrition and Sport Nutrition within the School of Sport and Exercise Sciences. Their research sits at the intersection of qualitative sociology, Fat Studies, and feminist embodiment, with focus on stigma, identity, and the lived experience of body size.

COCREATING INCLUSIVE SENSORY SPACES TO IMPROVE STUDENT WELLBEING ACROSS CAMPUS

By Libby Robinson

The project is facilitated by School of Education PhD researcher Libby Robinson, whose work focuses on improving inclusivity and supporting student wellbeing in higher education. The research highlights the value of multi-sensory environments and seeks to develop a framework to guide the creation of further sensory spaces across the LJMU campus.

Libby engages with students to help shape the university's first Sensory Resource Hub and contribute to future designs. The open-access space offers neurodivergent students, and anyone who may find the university environment overwhelming, a calm setting to decompress, regulate their senses, and recharge. The Sensory Resource Hub is open in the Education Building (lower-ground room B.04) Mount Pleasant Campus.

NEGATION IN THE CHILDBEARING CONTINUUM: AN IN DEPTH EXPLORATION OF WOMEN'S NARRATIVES IN THE UK

By Dr Jane Rooney

Using a small-story narrative approach to explore negated childbearing stories and the act of storytelling. Through poetry she adopted a reflexive lens throughout her research, drawing on her own personal and professional experiences to amplify the voices of those with concealed or unrecognised childbearing journeys.

With over twenty years of experience as a registered midwife, Dr Rooney has worked across a wide range of clinical settings before moving into education, teaching, learning, and research. She is deeply committed to the midwifery profession and to the role midwives play in advancing knowledge, enhancing skills, and strengthening the evidence base that underpins high-quality care and practice.



MAKING MARI: A VISUAL RECORD OF COPRODUCING MATERNAL ALCOHOL RESOURCE AND INFORMATION

By Abi Rose

Displayed are visual minutes posters from the Maternal Alcohol Resources and Information (MARI) project led by Dr Abi Rose, whose work focuses on biopsychosocial drivers of alcohol use in women and developing evidence to inform tailored, effective interventions. MARI co-creators - women who were trying to conceive, pregnant, or parenting young children. Co-applicants are: Professor Felix Naughton (Professor of Health Psychology, University of East Anglia), an expert in health psychology and behavioural science with extensive experience in developing and evaluating digital health behaviour change interventions, Dr Laura Goodwin (Lancaster University), a health researcher contributing expertise in behavioural science and applied health research, and Emma Conway, a PPI (patient and public involvement) co-investigator, ensuring that lived experience shaped research decisions.

The team were supported Dr Elaine McNeill an expert in arts-based health research and coproduction. This research was funded by the National Institute for Health Research (Research for Patient Benefit programme): NIHR207252.

'LET'S TALK HOPE: ENDING THE STIGMA AROUND SUICIDE'

By Pooja Saini

This piece is a powerful podcast series dedicated to opening conversations around suicide prevention, mental health, and community support. Hosted by Gemma Cutting and Professor Pooja Saini, each episode features real stories, expert insights and practical solutions to break the stigma surrounding suicide. From barbershops to postvention support, menopause to crisis intervention, this series highlights the voices of those with lived experience and the importance of hope, awareness and action in saving lives.

Scan the QR code for additional details on the research project and data.



RARE CANCERS,PHYSIOTHERAPY AND WELLBEING

By Kay Standing

Stories of PMP Survivors: Cancer and Exercise

Pseudomyxoma peritonei (PMP) is a very rare form of cancer, affecting only 2–3 people per million. Due to its rarity, research exploring the social, emotional, and psychological impacts of living with PMP remains limited. The study aimed to investigate the emotional, psychological, social, and cultural dimensions of health, illness, and wellbeing for individuals diagnosed with PMP. Its aim was to identify gaps in rehabilitation provision and support, and to explore both the barriers to, and opportunities for improving access to, exercise and physiotherapy services for survivors of rare cancers. The dataset uses mixed methods, including surveys and interviews with patients, cancer survivors, medical and health professionals. Drawing on these findings, the research team has produced a 20-minute film that presents case studies to illustrate both the benefits of, and obstacles to, exercise.

Kay Standing is a Professor in Gender Studies at Liverpool John Moores University. Mathilde Chartier is an independent filmmaker, Serendipity Entertainment: Cinematic Photography & Videography

MINDFUL GARDEN- THE WILLIAM ROSCOE COLLECTION: MAPPING WHAT REMAINS

By Rachael Symonds , Mark Roughley, Dr Jose Prieto Garcia, Dr Kathryn Walchester, Samantha Cooper & Liberty Schofield

This exhibition draws on a dataset built from the historic William Roscoe Collection, once considered one of the world's most important botanical assemblages. Over time, many plants have disappeared, leaving only 12 of the original 112 specimens. The data enabled accurate species identification and, when combined with publicly available sequences from NCBI, allowed the reconstruction of a phylogenetic tree representing the full historical scope of Roscoe's collection. Together, the dataset highlights both the evolutionary relationships among these plants and the significant gaps left by centuries of loss.

The research is undertaken by a multidisciplinary team of staff and students. Mark Roughley, Reader in Interdisciplinary Digital Visualisation, Dr Rachael Symonds, Senior Lecturer in Plant Physiology, Dr Jose Prieto Garcia, and Dr Kathryn Walchester, Subject Leader for English and Creative Writing, PhD student Samantha Cooper and student, Liberty Schofield.

ART IN IMMIGRATION DETENTION

By Jo Vincett

The origami art pieces in this exhibit were crafted by women held in Yarl's Wood Immigration Removal Centre, near Bedford, England. Art created in detention can be seen as a means of coping with anxiety and uncertainty. Immigration detention centres are hidden spaces in UK society. The majority of those confined are seeking asylum and have limited access to legal advice. The exhibition pieces build awareness of the lived experiences of people who are separated from their families and friends, made vulnerable and marginalised by the state due to the policy of indefinite time limits in these centres. Jo is a voluntary sector researcher, executive coach and senior lecturer in Executive Education, Liverpool Business School. Jo is also a Trustee of the Voluntary Sector Studies Network in the UK.

PORTRAYING DEATH: STUDENT NURSES PRACTICE LEARNING EXPERIENCES OF END-OF-LIFE CARE

By Viki Whaley

This exhibit presents nurses uniform and memory boxes developed from data generated through an arts-based inquiry into student nurses' experiences of caring for people who are dying. These visual representations capture the emotional, cognitive, and relational dimensions of students' earliest encounters with death in practice settings.

The installation features a series of "spilled" objects that symbolise the cognitive, emotional, and clinical responsibilities metaphorically emptied from the pockets of practice. These items reflect the weight of expectation, uncertainty, and emotional labour that students navigate as they learn to care for dying people.

Viki is a Principal Lecturer - Undergraduate Nursing. Her career includes community district nursing and senior hospice leadership. This experience has offered a deep insight into the emotional, ethical, and organisational complexities of supporting people at the end of life, as well as the structural and relational support required by the professionals who deliver this care.

ONCE UPON A TUMMY: STORYING RESISTANCE AND INCLUSION WITH CHILDREN WITH INFLAMMATORY BOWEL DISEASE

By Catherine Wilkinson , Jenna rice & Charlotte Wood

The exhibit brings together the verbatim quotations, storyboards, early visual concepts, and draft illustrations that formed the creative backbone of the coproduced children's storybook *Toni's Tummy of Screams and Dreams*. These materials showcase research data in its most expressive and imaginative forms, revealing how transcripts, drawings, and narrative ideas, can become powerful data sources in their own right. They were collected through an arts-based participatory process with seven children and young people living with Inflammatory Bowel Disease (IBD) in the UK.

Dr Catherine Wilkinson is a Reader in Childhood and Youth Studies in the School of Education, Dr Jenna Rice is a Research Fellow in Implementation Science at Northumbria University and Charlotte Wood is a graduate from the BA (Hons) Graphic Design & Illustration degree programme at LJMU.

HILLS OF TEARS

Birge Yildirim Okta

This piece makes visible the state of 'being in-between' through an installation that explores how space can act as a political instrument and how architecture can intertwine with collective memory. Drawing on Judith Butler's reflections on the political power of public mourning, the installation revolves around two essential questions: 'Whose grief counts as public?' and 'Can architecture mourn with us?' It constructs a threshold space where society cannot fully experience, express, or articulate its grief—making the absence of public mourning, the limits of political recognition, and the processes of collective repression spatially perceptible. Recalling those condemned to oblivion through the state's biopolitical framing, Hill of Tears functions as a site of memory that releases the repressed energy of mourning. Public mourning becomes a political act, showing how individual experiences of loss can be transformed into a collective expression. Traumas that are rendered invisible in social memory—such as femicides and child murders—are spatialised in this installation as a collective scene of remembrance.

Scan the QR code for additional details on the research project and data.



A MULTIVERSE OF MILKY WAY GALAXIES

By Andreea Font

At the Astrophysics Research Institute (ARI) researchers build sophisticated computer simulations to model the formation of galaxies like our own Milky Way. From the Big Bang to the present day, generating vast and complex datasets that capture how galaxies evolve over billions of years. Researchers also run simulations of the formation of the Milky Way in universes that are different than our own. These are universes which are governed by different laws of physics, for example different forms of dark matter, or different ways in which stars and planets form. Usually, these simulations are explored with the use of numerical codes that are built to compare galaxies in each model. However, to gain a better understanding of how our Galaxy would look like in each universe, researchers also use images which transform complex scientific data into engaging visual narratives. The stream of visual experiences in this exhibition tells the story of Milky Way's formation in a 'Multiverse'.

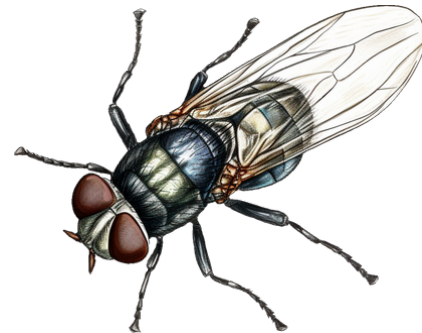
This work is led by Andreea Font, a computational astrophysicist specialising in galaxy formation and dark matter, with support from Matthew Sailer, Shaun Brown, and Zoe McCarthy.

FRUIT FLIES

By Dr Susi Zajitschek

In this project, Dr Zajitschek examined the combined impact of three levels of dietary protein across five temperature conditions. Findings revealed that low temperatures combined with dietary restriction drastically reduced lifespan in female flies, while heat stress was harmful to both sexes regardless of diet. The study also uncovered complex maternal and paternal environmental effects on offspring, demonstrating how stress can echo across generations.

The accompanying artwork transforms densely clustered fruit flies into a repeating 3D wallpaper-like pattern, using their tiny forms to visualise large-scale biological questions. The research reflects a career investigating transgenerational and parental effects across species including lizards, toads, crickets, beetles, fish, and fruit flies.



Open Research Guide

The principles of open research, guide the practice of making research processes, outputs and data as transparent, accessible and reproducible as possible.

Transparency ensures that methods, data and processes are openly available, enabling others to understand, validate and reproduce findings. **Accessibility** removes barriers to research outputs, such as publications, data and software, ensuring they are available to all.

Reproducibility strengthens credibility by allowing results to be verified and built upon, while collaboration fosters cooperation across disciplines and institutions, driving collective innovation.



Practising Open Research:

- Enables other researchers to reproduce your results and build on your work
- Demonstrates that your research is robust and transparent
- Prevents unnecessary duplication by ensuring your research is widely accessible
- Ensures you retain access to your own work in the long term
- Enables faster dissemination and increases the impact of your findings, raising your research profile
- Extends the reach and influence of your research beyond academia, driving real-world impact
- Creates opportunities for collaboration across disciplines, institutions and sectors
- Increases the visibility of your work and boosts the likelihood of citations
- Enhances the profile of LJMU by showcasing the breadth and quality of our institutional research
- Ensures compliance with funder requirements, including the Research Excellence Framework (REF) and Plan S

LJMU's Institutional Open Access Publishing Agreements

The Library has negotiated several institutional agreements with publishers to reduce or cover the cost of APCs for academic staff and PhD researchers. These agreements enable researchers to publish open access without bearing the full financial burden themselves. However, it is important to note that these agreements vary from publisher to publisher and terms such as inclusion/exclusion criteria and agreement dates are subject to change. Before submitting your article check the specific details of the agreement by consulting our webpages or get in touch with the Open Research Team, for confirmation of a journal's eligibility.



For more on open access publishing go to:
<https://www.ljmu.ac.uk/library/researchers/open-access-publishing>

Open Access Support and Resources

The Library Open Research Team offer extensive resources and services to support open access publishing and all aspects of the open research agenda. The team provide tailored expertise and dynamic support to help research students and staff succeed and develop their skills.



Symplectic

Symplectic allows LJMU staff and postgraduate research students to record their publications and professional activities, which are displayed on their profiles. New staff are automatically added, and no login is needed on campus. Off-campus access requires an LJMU username and password.



ORCID for LJMU Researchers

ORCID provides you with a unique identifier that can be kept throughout your career. It can be used in publications and grant applications, and you can link it to Symplectic. ORCID distinguishes between researchers with similar names and helps ensure that publications are attributed and recorded correctly.

For our ORCID guide go to:

<https://www.ljmu.ac.uk/-/media/ljmu/library/files/pdfs/orcidguide.pdf>



DID YOU KNOW?

DOIs are a type of Persistent Identifier (PID) important for enabling computational research, particularly in Heritage Science and 'Scientific Examination'

Open Data

Open data refers to the practice of making research data freely accessible to everyone with minimal restrictions. This approach is fundamental to enhancing the transparency, reproducibility and impact of scientific research.

Understanding Open Data

Where data is often complex and interdisciplinary, open data practices can significantly accelerate scientific progress and innovation. By sharing data openly, you allow others to validate and build upon your findings, fostering a collaborative and efficient research environment.

Data Management Plans (DMPs)



A Data Management Plan (DMP) is a comprehensive document outlining how research data will be handled throughout its lifecycle. Contact the Library team for DMP reviews!

Grants and Funding



Open research practices are prioritised by funders to promote transparency, collaboration, and societal impact. These practices can enhance funding application success rates and foster inclusivity in research. Additionally, many funders now require open access publication, improving accessibility and knowledge sharing.

LJMU Data Repository

The LJMU Research Data Repository is the University's data repository. Data stored in the LJMU Research Data Repository can be freely accessed online by anyone and easily discovered through web search engines. Where research data is not suitable for sharing on an open access basis immediately, due to commercial or copyright reasons, it can be added to the repository, with an appropriate embargo period. It will then be made open access after this time period has passed.

Alternatively, researchers can explore other specialist open repositories to access relevant datasets for their work.

LJMU Research Data Support and Resources

The Open Research Team supports your research project from start to finish, offering feedback on data management plans, assistance in selecting suitable data repositories, and advice on data availability and open access conditions.

Library and IT Services

The Open Research Team provides expertise, resources and services to LJMU research students and staff. The Library is committed to helping research students and staff succeed and develop their research skills.



Enhance your LJMU staff profile by adding your research data to Symplectic!

If you have open datasets or code on platforms like Figshare, Zenodo, Dryad, or GitHub, you can now include them.

Also look out for AHRC Initiatives:

- **RICHeS Infrastructure and the Heritage Science Data Service, previously known as E-RIHS**
- **DiSSCo, DiSSCo UK, and the Digital Specimen Repository (DSR)**

Additionally, consider exploring the Archaeology Data Service (ADS), a longstanding data service within the AHRC, as well as the Museums Data Service (MDS). These core services will be integrated within the National Research Infrastructure for Cultural Heritage (N-RICH) in the future.

Training and workshops

Training and workshops support researchers' professional development, focusing on enhancing skills throughout the research lifecycle. Offered sessions include:

- Data planning and best practices for sharing and archiving
- Open access and journal publishing guidance
- Creating and curating research profiles
- Measuring research impact with metrics

These are part of The Library, Open Research Team's training program, with bespoke sessions available for groups and individuals.

Scan QR code to book onto our training or go to www.unical.ljmu.ac.uk/



THANK YOU ... THANK YOU... THANK YOU... THANK YOU...

This exhibition would not be possible without funding
from the Open Library of Humanities (OLH) and contributions from

Amanda Atkinson Kate Ballantyne Susan Barry Hannah Baumeister Hilary Bishop

Peter Blundell Tracy Branagan Kehinde Ross Loz Tonge Lorna Brookes Colum Cronin

Katherine Neary Gemma Dale Ian Davies Nick Dawnay Louise Dawnay Philip Denton Ekaete Efretuei

Peter Falkingham Helena Gosling Joshi Jariwala Patricia Mackinnon-Day Samantha Mai Barker

Steve Nolan Rafaela Neiva Pouria Motalebi Shelley O'Connor Kayla Owen Paul Owen Luiza Passos

Janette Porter Maike Potschulat Lucinda Richardson Libby Robinson Jane Rooney Abi Rose

Pooja Saini Kay Standing Rachael Symonds Mark Roughley Dr Jose Prieto Garcia Kathryn Walchester

Samantha Cooper Liberty Schofield Jo Vincent Viki Whaley Catherine Wilkinson Jenna rice

Charlotte Wood Dr Susi Zajitschek Áine McCallion Andreea Font Birge Yildirim Okta

Acknowledgements

Open Research Team Library Craft Club World Museum, National Museums Liverpool Ryan Longthorne

Special Collections & Archives Library Engagement Team Susannah Waters Liverpool Botanical Trust

Anthony Scott Jess Swainson Nicholas Robinson Mariana Sequera Dorransoro Dr Julie Carroll Michael Monaghan

Francesca Champ Matthew Gherardi Amy Hardwick Tabo Huntley Colin Lewis Gus Ryrie Amy Whitehead Fieke Rongen David Tod

Andreas Jannel Ben Griffin Rebecca Lowes Tash Prescott Harriet Fuest Janine Melvin Elaine McNeill

Matthew Sailer Shaun Brown Zoe McCarthy

THANK YOU ... THANK YOU... THANK YOU... THANK YOU...