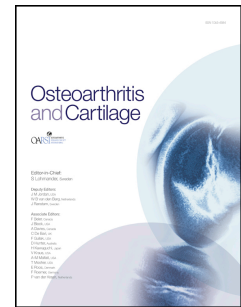


# A knee brace alters patella position in patellofemoral osteoarthritis: A study using weight bearing magnetic resonance imaging

M.J. Callaghan, H. Guney, N. Reeves, D. Bailey, K. Doslikova, C. Maganaris, R. Hodgson, D.T. Felson



PII: S1063-4584(16)30178-9

DOI: [10.1016/j.joca.2016.07.003](https://doi.org/10.1016/j.joca.2016.07.003)

Reference: YJOCA 3799

To appear in: *Osteoarthritis and Cartilage*

Received Date: 6 August 2015

Revised Date: 24 June 2016

Accepted Date: 8 July 2016

Please cite this article as: Callaghan M, Guney H, Reeves N, Bailey D, Doslikova K, Maganaris C, Hodgson R, Felson D, A knee brace alters patella position in patellofemoral osteoarthritis: A study using weight bearing magnetic resonance imaging, *Osteoarthritis and Cartilage* (2016), doi: 10.1016/j.joca.2016.07.003.

This is a PDF file of an unedited manuscript that has been accepted for publication. As a service to our customers we are providing this early version of the manuscript. The manuscript will undergo copyediting, typesetting, and review of the resulting proof before it is published in its final form. Please note that during the production process errors may be discovered which could affect the content, and all legal disclaimers that apply to the journal pertain.

A KNEE BRACE ALTERS PATELLA POSITION IN PATELLOFEMORAL  
OSTEOARTHRITIS: A STUDY USING WEIGHT BEARING MAGNETIC RESONANCE  
IMAGING.

Callaghan MJ<sup>1,2,3</sup>, Guney H<sup>5</sup>, Reeves N<sup>6</sup>, Bailey D<sup>7</sup>, Doslikova K<sup>6,9</sup>, Maganaris C<sup>8</sup>, Hodgson  
R<sup>1,2</sup>, Felson DT<sup>1,2,4</sup>.

Institutions:

<sup>1</sup> Arthritis Research UK Centre for Epidemiology, University of Manchester, UK

<sup>2</sup> NIHR Manchester Musculoskeletal Biomedical Research Unit, Manchester Academic  
Health Sciences Centre, Manchester, UK.

<sup>3</sup> Department of Health Professions, Manchester Metropolitan University, Manchester, UK

<sup>4</sup> Clinical Epidemiology Unit, Boston University School of Medicine, Boston, MA, USA

<sup>5</sup> Faculty of Health Sciences, Physiotherapy and Rehabilitation Department, Hacettepe  
University, Ankara, Turkey

<sup>6</sup> Institute for Biomedical Research into Human Movement and Health, School of Healthcare  
Science, Manchester Metropolitan University, UK

<sup>7</sup> Department of Radiology, University Hospitals Warwick and Coventry, UK

<sup>8</sup> School of Sport and Exercise Sciences Liverpool John Moores University, Liverpool, UK

<sup>9</sup> Katholieke Universiteit Leuven/Research Group for Musculoskeletal Rehabilitation,  
Leuven, Belgium

## ABSTRACT

**Objective:** To assess using weight bearing MRIs, whether a patellar brace altered patellar position and alignment in patellofemoral joint (PFJ) osteoarthritis (OA).

**Design:** Subjects age 40-70 years old with symptomatic and a radiographic K-L evidence of PFJOA. Weight bearing knee MRIs with and without a patellar brace were obtained using an upright open 0.25 Tesla scanner (G-Scan, Easote Biomedica, Italy).

Five aspects of patellar position were measured: mediolateral alignment by the bisect offset index, angulation by patellar tilt, patellar height by patellar height ratio (patellar length / patellar tendon length), lateral patellofemoral contact area and finally a measurement of patellofemoral bony separation of the lateral patellar facet and the adjacent surface on the femoral trochlea (Figure 1).

**Results:** Thirty participants were recruited (mean age 57 SD 27.8; BMI 27.8 SD 4.2); 17 were females. Four patients had non-usable data. Main analysis used paired t tests comparing within subject patellar position with and without brace.

For bisect offset index, patellar tilt and patellar height ratio there were no significant differences between the brace and no brace conditions. However, the brace increased lateral facet contact area ( $p = .04$ ) and decreased lateral patellofemoral separation ( $p = .03$ ).

**Conclusion:** A patellar brace alters patellar position and increases contact area between the patella and femoral trochlea. These changes would lower contact stress at the PFJ. Such changes in patella position in weight bearing provide a possible biomechanical explanation for the success of the PFJ brace in clinical trials on PFJOA.

A KNEE BRACE ALTERS PATELLA POSITION IN PATELLOFEMORAL  
OSTEOARTHRITIS: A STUDY USING WEIGHT BEARING MAGNETIC  
RESONANCE IMAGING.

ABSTRACT

Objective: To assess using weight bearing MRIs, whether a patellar brace altered patellar position and alignment in patellofemoral joint (PFJ) osteoarthritis (OA).

Design: Subjects age 40-70 years old with symptomatic and a radiographic K-L evidence of PFJOA. Weight bearing knee MRIs with and without a patellar brace were obtained using an upright open 0.25 Tesla scanner (G-Scan, Easote Biomedica, Italy).

Five aspects of patellar position were measured: mediolateral alignment by the bisect offset index, angulation by patellar tilt, patellar height by patellar height ratio (patellar length / patellar tendon length), lateral patellofemoral contact area and finally a measurement of patellofemoral bony separation of the lateral patellar facet and the adjacent surface on the femoral trochlea (Figure 1).

Results: Thirty participants were recruited (mean age 57 SD 27.8; BMI 27.8 SD 4.2); 17 were females. Four patients had non-usable data. Main analysis used paired t tests comparing within subject patellar position with and without brace.

For bisect offset index, patellar tilt and patellar height ratio there were no significant differences between the brace and no brace conditions. However, the brace increased lateral facet contact area ( $p = .04$ ) and decreased lateral patellofemoral separation ( $p = .03$ ).

Conclusion: A patellar brace alters patellar position and increases contact area between the patella and femoral trochlea. These changes would lower contact stress at the PFJ. Such changes in patella position in weight bearing provide a possible biomechanical explanation for the success of the PFJ brace in clinical trials on PFJOA.

## INTRODUCTION.

Patellofemoral (PF) osteoarthritis (OA), a common subtype of knee OA, is a major cause of pain with stair climbing, arising from a chair and activities involving kneeling or squatting. It is associated with pain, stiffness and functional limitation<sup>3,5</sup>. Guidelines for the non-surgical management of generalised knee OA found 'fair' quality of evidence for the use of knee braces and knee sleeves<sup>21 9</sup>. Treatment of PFOA is similarly limited but one potential treatment is a patellar sleeve device. Evidence for its clinical efficacy is provided by two clinical trials in PFOA<sup>1,8</sup>. These trials had positive effects on pain and structure from wearing a patellar sleeve brace compared to no brace<sup>1</sup> and on pain with or without the patellar retaining strap.<sup>8</sup> One of the proposed reasons for this clinical success is that the patellar brace may, during weight bearing activities, change patellar alignment and alter patellar tracking relative to the trochlear groove both of which are considered major contributions to the pathomechanics of PF pain. Whilst a brace's effects on the biomechanics of the PF joint are still not well understood, there is evidence from studies in non-arthritis PF pain that it may correct malalignment<sup>17</sup> and increase contact area of the PF joint<sup>18</sup>. This distribution of forces over a greater area could decrease the contact stresses. Several authors agree that magnetic resonance imaging (MRI), with its capability of viewing the patellar position in various planes, is more useful and informative than

plain radiography<sup>6, 10, 12</sup>. MRIs also have the advantage of using non-ionising radiation enabling repeated imaging, as in the present study, with and without a brace. Weight bearing MRIs may give a more valid view of PF congruence and position under natural loads exerted by body mass. Patellofemoral position is usually assessed clinically through palpation of the patella through a range of motion or by observing the motion of the skin over the patella. This assessment is commonly performed in a seated, unloaded posture that does not reflect joint movement during functional, weight bearing tasks.

To date, one study has used weight bearing MRIs to assess braces on non-arthritic, symptomatic PF pain<sup>4</sup>. To our knowledge there have been none assessing PFOA, although McWalter et al<sup>11</sup> assessed a knee sleeve in PFOA with *simulated* weight bearing MRIs by applying 15% of body weight of axial load through the patient's foot.

Since PFOA is likely to affect either medial or lateral patellar compartments<sup>7</sup>, the effects of braces on patellar position might have a bearing on treatment choices and brace design. Consequently, the weight bearing MRI may give a more realistic view of PF congruence and be a more appropriate technique when assessing patella position.

## Purpose

The purpose of this study on PFOA was to use weight bearing MRIs to assess whether a sleeve brace altered patellar position. The hypothesis was that there would be differences in measures of PF position after the application of a patellar brace compared to no brace.

## METHODS

The study was approved by the XXX Local Research Ethics Committee (Ethics number 09/H1012/35). It was performed at the XXXX and at the University XXXX

### Subjects

We recruited a subset of subjects age 40-70 years who had been enrolled in a previous randomized trial of patellar brace treatment for people with PFOA<sup>2</sup>. They had a K-L score grade 2 or 3 in the PF compartment which was greater than K-L score for the tibiofemoral compartments (this score required at least probable narrowing of the PF joint on X-ray and definite osteophytes in the PF compartment). Those who did not have plain radiographs were assessed for PFOA by either MRIs or arthroscopy, for which we required typical changes of OA with at least cartilage loss present in the PF joint. Subjects were also assessed by an experience clinician for PF joint symptoms such as pain reproduced with stair climbing, kneeling, prolonged sitting or squatting or if they had lateral or medial patellar facet tenderness on palpation or a positive patellar compression test. Pain must have been present daily for the previous 3 months and the pain had to be sufficiently severe for a nominated aggravating activity to score of 40 or above on a 0-100mm visual analogue scale (VAS<sub>NA</sub>). The VAS<sub>NA</sub> has been found to be at least as sensitive, and in some cases more sensitive to change than the KOOS or WOMAC questionnaires<sup>13, 14</sup>. Typically, subjects' nominated aggravating activities were stair climbing, kneeling, prolonged sitting or squatting.

### Exclusion criteria

Participants were excluded if they had a previous patellar fracture or patellar realignment surgery, if the predominant symptoms emanated clinically from the

tibiofemoral joint, from meniscal or ligament injury, if they had rheumatoid arthritis or other forms of inflammatory arthritis or if they had an intra-articular steroid injection into the painful knee in the previous month. For the purposes of the MRI, patients were excluded if they had a cochlear implant, metal objects in the body including a joint prosthesis, a cardiac or neural pacemaker, a hydrocephalus shunt, an intrauterine contraceptive device or coil, if they had kidney dysfunction or were undergoing renal dialysis.

#### MRI procedures

Participants had MRIs of their knee joint using an upright open 0.25 Tesla scanner (G-Scan, Easote Biomedica, Italy). Participants first remained supine for approximately 5 mins to enable the recovery of viscoelastic structures in the knee, as the participant had been weight-bearing prior to entering the scanner. Following this rest period, an initial positioning scan (scout) was performed followed by axial and sagittal plane scans. Scans had a TR range of 690 - 830ms and TE range of 14-28ms with a slice thickness of around 4mm and a gap between slices of 0.4mm. The bed of the MR scanner was then be tilted into the upright position 4 degrees inclined from the vertical to allow weight-bearing. Foot position was controlled by aligning the great toe with a piece of tape on the platform. The scan time for each sequence was 2:43 mins, with 1 acquisition. Subjects were randomised to the order of brace or no brace by sealed opaque envelopes under the supervision of the study statistician.

Images were viewed off line.

#### Study Intervention



The brace intervention consisted of a Bioskin Patellar Tracking Q Brace (Ossur UK, Stockport, England) (figure 1).

#### Patellar Alignment Measurements

Medical imaging software Clear Canvas Workstation (Version 7.0.0.) was used. All images were anonymised so that examiners were blinded to the patient identification and group conditions (brace or no brace).

Five measurements of patellofemoral alignment and congruence were taken.

Bisect offset index assessed medio-lateral patellar displacement relative to the femur

The technique was initially described by Stanford et al<sup>20</sup> and used by Powers et al<sup>16</sup>.

A line was drawn connecting the posterior femoral condyles on the slice in which the posterior condyles were most obvious and a perpendicular line was projected up

through the deepest point (apex) of the trochlea. Then another slice was found on

which the patellar width was clearest and on which a line could be drawn to measure

the width. Finally, these two slices were superimposed allowing us to project the line

anteriorly from the bisection of the posterior condylar line through the second line on

the patella<sup>16</sup>. To determine the patellar displacement by the bisect offset, the extent of

the patella lateral or medial to the perpendicular midline was expressed as a

percentage of the total patellar width. (Figure 2).

Medio-lateral patellar tilt angle was measured as the angle formed by the lines joining

the maximum width of the patella and the line joining the posterior femoral condyles

<sup>15, 16</sup> (Figure 3).

Lateral patellofemoral joint contact area was defined as areas of patella and femur

approximation in which no distinct separation could be found between the cartilage

borders of the two lateral joint surfaces (Figure 4). A line of contact was drawn

between the patella and the femur<sup>17</sup>. The contact area for each slice was measured and multiplied by the length of the contact line with the slice thickness (0.4mm). Each sequential image was summed to obtain the total lateral contact area  $\Sigma (CL \times (SL \times SG))$  (CL = contact length; SL = slice length; SG = slice gap) x (slice length + slice gap). Because cartilage was relatively bright on fat suppressed fast spoiled gradient echo images, we used the operation definition of contact area as white on white<sup>17</sup>. The determination of non-contact was made when a line of separation could be observed between the articular surfaces of the patella and trochlear groove.

The level of agreement between the MRI and pressure sensitive film techniques in cadaver specimens was for ICC 0.91 and for CV 13%. When averaged across all specimens, the contact area obtained through MRI was 2.94 (SD 1.01 cm<sup>2</sup>) while the contact area obtained using the pressure sensitive film technique was 3.05 (0.95 cm<sup>2</sup>). The average individual specimen difference between the two methods was 10.9%.

The Insall-Salvati ratio was measured on the sagittal views by a ratio between patella tendon length relative to the superior–inferior length of the patella (patellar length / patellar tendon length)<sup>19</sup>. (Figure 5).

Patellofemoral distance (the distance between the patella and the femur) was measured to assess if the brace reduced the distance between the opposing surfaces of the patella and the femur, specifically the lateral patellar facet and the adjacent surface on the lateral femoral trochlea. First, the area between patella and femur was determined by drawing a trapezoid on an axial slice where patellofemoral distance was greatest. The average distance between the patella and femur was measured by dividing the area (automatically calculated by the Clear Canvas program) by the longest side of the trapezoid (Figure 6).

## Reliability

Inter rater reliability for the MRI measurements was assessed between two assessors using a 2 way random model for absolute agreement inter-class correlation coefficient ( $ICC_{2,1}$ ). The results were for bisect offset index  $ICC_{2,1}$  0.97 (95%CI 0.96, 0.98) SEM 2.6, for patellar tilt angle  $ICC_{2,1}$  0.96 (95%CI 0.94, 0.97) SEM 1.43°, for lateral patellofemoral joint contact area  $ICC_{2,1}$  0.73 (95%CI 0.53, 0.85), SEM 3.1cm<sup>2</sup>, for the Insall-Salvati ratio  $ICC_{2,1}$  0.95, (95%CI 0.80, 0.98) SEM 0.031, and for patellofemoral distance  $ICC_{2,1}$  0.84, (95% CI 0.48,0.97), SEM 0.32cm.

## Analysis

Data were visually analysed with histograms, Q-Q plots and Kolmogorov-Smirnov tests which confirmed normality of distribution. The main within subjects analysis used paired t tests comparing patellofemoral alignment and congruence with and without a brace. Statistical significance was set at  $p \leq 0.05$ .

## RESULTS

Thirty subjects with PFOA were recruited (mean age 57, SD 7.8years, BMI mean 27.8, SD 4.2); 17 were females (56%). Five subjects had their PFOA assessed by MRIs or arthroscopy. Four patients had non-usable MRI data because of missing data on some parameters or because of technical problems such as movement artefact. Therefore 26 patients' data were analysed. There were no adverse events. For bisect offset index, patellar tilt and patellar height ratio there were no significant differences between the brace and no brace conditions. However, the brace significantly increased lateral facet contact area (0.94cm<sup>2</sup>, 95% CI 0.07, 1.8,  $p = .04$ ) and decreased lateral patellofemoral distance (-0.06cm 95% CI -0.12, -0.01,  $p = .03$ ) (Table 1).

## DISCUSSION

This is the first study using weight bearing MRIs on subjects with symptomatic PFOA to evaluate the effects of bracing on the PF joint. It found that the brace significantly increased the lateral contact area of the PF joint and decreased PF joint lateral distance. The other measures of PF joint position (bisect offset index, patellar tilt and patellar height ratio) were not altered significantly. MRIs are more useful and informative than plain radiography by viewing the patellar position in various planes<sup>6, 10, 12</sup>. MRIs also have the advantage of using non-ionising radiation enabling repeated imaging, as in the present study, with and without a brace. Using a scanner with the capability of providing standing weight bearing images adds to its usefulness. Comparison with previous research is compromised by the few weight bearing studies available, all of which were only done on non-arthritic PF pain. Draper et al.<sup>4</sup> found a patellar sleeve brace in females with non-arthritic PF pain produced non-significant reductions in weight bearing patellar tilt ( $0^0$ ) and bisect offset (4%) at full knee extension. Similarly, we did not find any significant differences in full knee extension between our patellar brace and no brace in bisect offset (1.39%, 95% CI -2.3, 5.1) and patellar tilt ( $-0.25^0$ , 95% CI -1.61, 1.1). The reasons for different values recorded are likely due to us assessing subjects with symptomatic PFOA and differences in the PF brace design suggesting that commercially available braces may have different biomechanical effects. McWalter et al<sup>11</sup> is the only comparable study looking at the same patellofemoral brace in the same knee condition, but differed from ours by using knee flexion up to  $50^0$  and lying subjects in supine with a simulated body weight load of 15%. They found the brace significantly altered patellar rotations and translations compared to no brace but questioned its clinical significance because no reduction in

pain was observed in their parent trial<sup>8</sup>, which compared the brace with a modified brace without a T-strap. The clinical significance of our findings for the parameters of lateral contact area and lateral patellofemoral distance may also be questioned, even though a clinically significant reduction in pain was observed in our parent trial which compared the brace to no a brace control<sup>2</sup>. As a result of our findings, we join with Draper et al.<sup>4</sup> in asking whether the small changes observed with a brace are sufficient to alter PF lateral contact area and lateral patellofemoral distance by a clinically meaningful amount. The small increases we recorded in these parameters concur with the work by Powers et al.<sup>17</sup> to explain the possible mechanism for the decrease in PF pain. They found, albeit in non-arthritic PF pain, that compared to no brace at full knee extension a PF brace had its greatest effect on lateral patellar facet contact area, had clinically small but statistically significant effects on the bisect offset index, but no effect on patellar tilt. They proposed the concept that the increased contact area would result in a decrease in joint area stress. Our PFOA subjects might have also benefitted from decreased joint area stress. Additionally, they may have benefitted from a sense of stability and confidence created wearing the brace. Although this was not objectively assessed in this study, patients in the parent trial<sup>2</sup> reported that their knee felt more stable and secure from brace wearing. All our subjects had an improvement in their VAS for a nominated activity and their KOOS after wearing the patellar brace as part of a randomised trial<sup>2</sup>. This trial, in conjunction with the present study shows that a PF brace has both symptomatic and biomechanical benefits for those with symptomatic PFOA.

## LIMITATIONS

The limitations of this study are that the MRIs were taken only in a single WB position, with no variability of knee flexion. The 0.2T field strength for the weight bearing MRI scanner used in this study has implications for the contrast resolution obtainable in an acceptable time. Participants were not blinded to the brace wearing condition. Additionally, as this was a subgroup from a previous trial, there was no further subgroup analysis of patients based on the severity or location of the PFOA.

## CONCLUSION

A patellar brace significantly increases PFJ lateral contact area and decreases PFJ lateral distance. This likely lowers contact stress at the PFJ. Such changes in PFJ position in weight bearing provide a possible biomechanical explanation for the success of the PF brace in clinical trials on PFOA.

## ACKNOWLEDGEMENTS:

Trial participants

NIHR Manchester Musculoskeletal Biomedical Research Unit,

Central Manchester NHS Foundation Trust,

Manchester Academic Health Sciences Centre, Manchester, UK

The R.O.A.M. team

Alex Ireland, at Manchester Metropolitan University

## Author contributions

Conception and design: Callaghan, Felson, Reeves, Maganaris.

Analysis and interpretation of the data: Callaghan, Felson, Guney, Bailey, Hodgson.

Drafting of the article: Callaghan, Felson, Guney, Bailey, Hodgson.

Final Approval: Callaghan, Felson, Hodgson, Guney, Reeves.

Provision of study facilities or patients: Callaghan, Felson, Reeves, Maganaris,

Doslikova.

Statistical expertise: Felson, Callaghan, Hodgson.

Obtaining of funding: Felson, Reeves, Maganaris

Collection and assembly of data: Callaghan, Doslikova, Reeves, Maganaris, Bailey,

Hodgson.

#### **Role of the funding source,**

This work was funded by Arthritis Research UK special strategic award 18676.

The funding source had no role in the design, analysis nor interpretation of data, nor in the writing of the manuscript.

This report includes independent research supported by the National Institute for Health Research Biomedical Research Unit (NIHR BRU) Funding Scheme. The views expressed in this publication are those of the author(s) and not necessarily those of the NHS, the National Institute for Health Research or the Department of Health.

#### **Competing interests**

None of the authors have competing interests related to this work.

## Reference List

- (1) Callaghan M, Parkes MJ, Forsythe LM, Williams HE, Stirling F, Felson DT. Beneficial effects of a brace for patellofemoral OA: results of a randomised trial. *Osteoarthritis Cart* 2013 April;21, Supplement(0):S23.
- (2) Callaghan MJ, Parkes MJ, Hutchinson CE et al. A randomised trial of a brace for patellofemoral osteoarthritis targeting knee pain and bone marrow lesions. *Ann Rheum Dis* 2015 January 16;74(6):1164-1170.
- (3) Crossley KM, Hinman RS. The patellofemoral joint: the forgotten joint in knee osteoarthritis. *Osteoarthritis Cart* 2011 July;19(7):765-767.
- (4) Draper CE, Besier TF, Santos JM et al. Using real-time MRI to quantify altered joint kinematics in subjects with patellofemoral pain and to evaluate the effects of a patellar brace or sleeve on joint motion. *J Orthop Res* 2009 May;27(5):571-577.
- (5) Duncan R, Peat G, Thomas E, Wood L, Hay E, Croft P. Does isolated patellofemoral osteoarthritis matter? *Osteoarthritis Cart* 2009 September;17(9):1151-1155.
- (6) Grelsamer RP, Newton PM, Staron RB. The medial-lateral position of the patella on routine magnetic resonance imaging: when is normal not normal? *Arthroscopy* 1998 January;14(1):23-28.
- (7) Gross KD, Niu J, Stefanik JJ et al. Breaking the Law of Valgus: the surprising and unexplained prevalence of medial patellofemoral cartilage damage. *Ann Rheum Dis* 2012 April 25.
- (8) Hunter DJ, Harvey W, Gross KD et al. A randomized trial of patellofemoral bracing for treatment of patellofemoral osteoarthritis. *Osteoarthritis Cart* 2011;19(7):792-800.
- (9) McAlindon TE, Bannuru RR, Sullivan MC et al. OARSI guidelines for the non-surgical management of knee osteoarthritis. *Osteoarthritis Cartilage* 2014 March;22(3):363-388.
- (10) McNally EG, Ostlere SJ, Pal C, Phillips A, Reid H, Dodd C. Assessment of patellar maltracking using combined static and dynamic MRI. *European Radiology* 2000;10(7):1051-1055.
- (11) McWalter EJ, Hunter DJ, Harvey WF et al. The effect of a patellar brace on three-dimensional patellar kinematics in patients with lateral patellofemoral osteoarthritis. *Osteoarthritis Cart* 2011 July;19(7):801-808.
- (12) Muhle C, Brossmann J, Heller M. Kinematic CT and MR imaging of the patellofemoral joint. *European Radiology* 1999;9(3):508-518.
- (13) Parkes MJ, Callaghan MJ, O'Neill TW, Forsythe LM, Lunt M, Felson DT. Sensitivity to Change of Patient-Preference Measures for Pain in Trials of Patients with Knee Osteoarthritis: A Secondary Analysis from the BRACE and TASK Trials. *Arthritis Care Res (Hoboken)* 2015 December 29.
- (14) Parkes MJ, Callaghan MJ, O'Neill TW, Felson DT. Sensitivity to Change of Patient Preference Outcome Measures for Pain in Trials of Patients with Knee Osteoarthritis. *Arthritis & Rheumatology* 2014;66(11):1284.
- (15) Powers CM, Shellock FG, Beering TV, Garrido DE, Goldbach RM, Molnar T. Effect of bracing on patellar kinematics in patients with patellofemoral joint pain. *Med Sci Sport Exerc* 1999 December;31(12):1714-1720.
- (16) Powers CM, Shellock FG, Pfaff M. Quantification of patellar tracking using kinematic MRI. *Journal of Magnetic Resonance Imaging* 1998 May;8(3):724-732.



- (17) Powers CM, Ward SR, Chan L, Chen Y-J, Terk MR. The Effect of Bracing on Patella Alignment and Patellofemoral Joint Contact Area. *Med Sci Sport Exerc* 2004 July;36(7):1226-1232.
- (18) Powers CM, Ward SR, Chen YJ, Chan LD, Terk MR. The effect of bracing on patellofemoral joint stress during free and fast walking. *Am J Sports Med* 2004 January;32(1):224-231.
- (19) Shabshin N, Schweitzer ME, Morrison WB, Parker L. MRI criteria for patella alta and baja. *Skeletal Radiology* 2004 August;33(8):445-450.
- (20) Stanford W, Phelan J, Kathol MH et al. Patellofemoral joint motion: evaluation by ultrafast computed tomography. *Skeletal Radiology* 1988;17(7):487-492.
- (21) Zhang W, Moskowitz RW, Nuki G et al. OARSI recommendations for the management of hip and knee osteoarthritis, Part II: OARSI evidence-based, expert consensus guidelines. *Osteoarthritis Cart* 2008 February;16(2):137-162.

Figure 1 The Bioskin Patellar Tracking Q brace.



Figure 2

Mediolateral displacement (Bisect Offset index)

Figure 2 a: ideal image to measure patellar width.

Figure 2 b: ideal image to view posterior condyles and trochlea

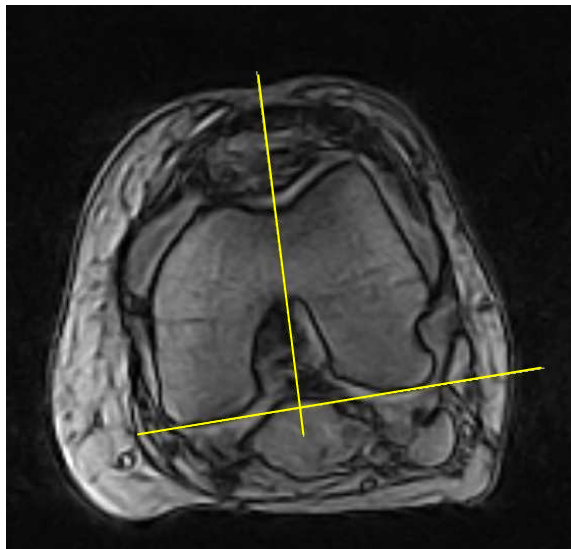
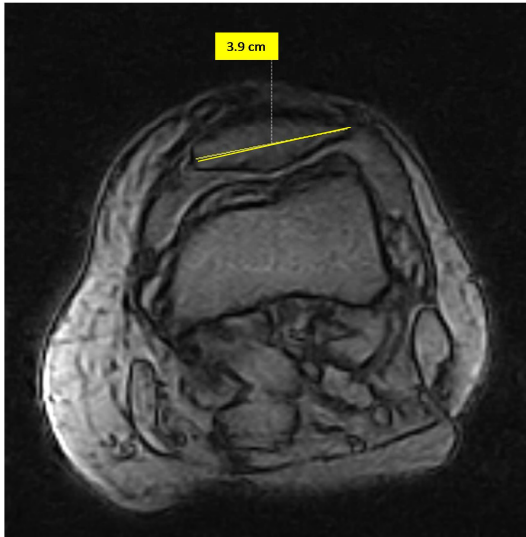


Figure 3  
Patellar Tilt Angle

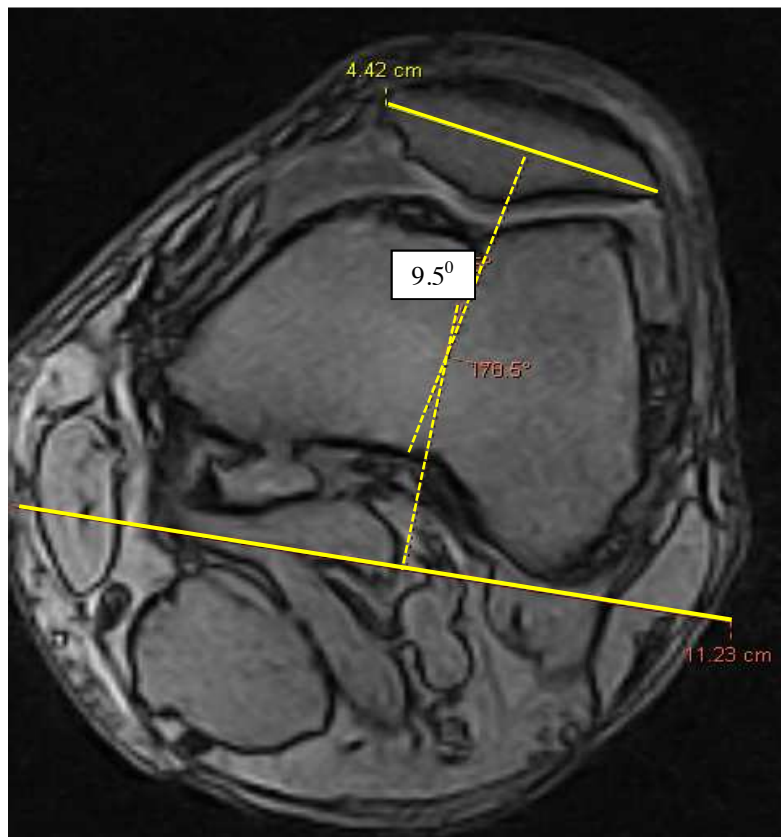


Figure 4  
Lateral Patellofemoral Contact Area

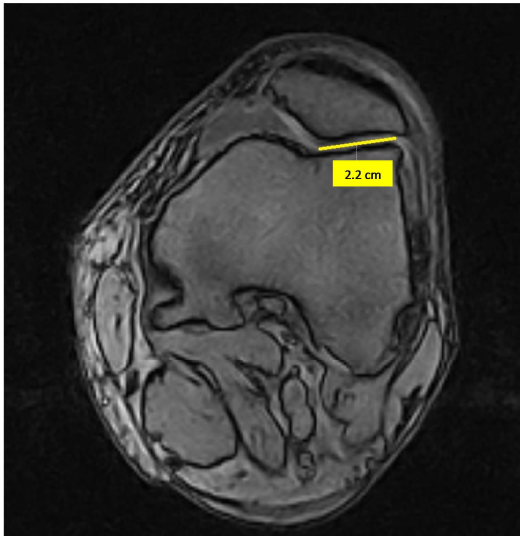


Figure 5  
Insall-Salvati Ratio Patellar bone length / Patella tendon length



Figure 6

Patellofemoral Distance

Area of Trapezoid  $a+b/2 \times h$  / length of lateral PF contact

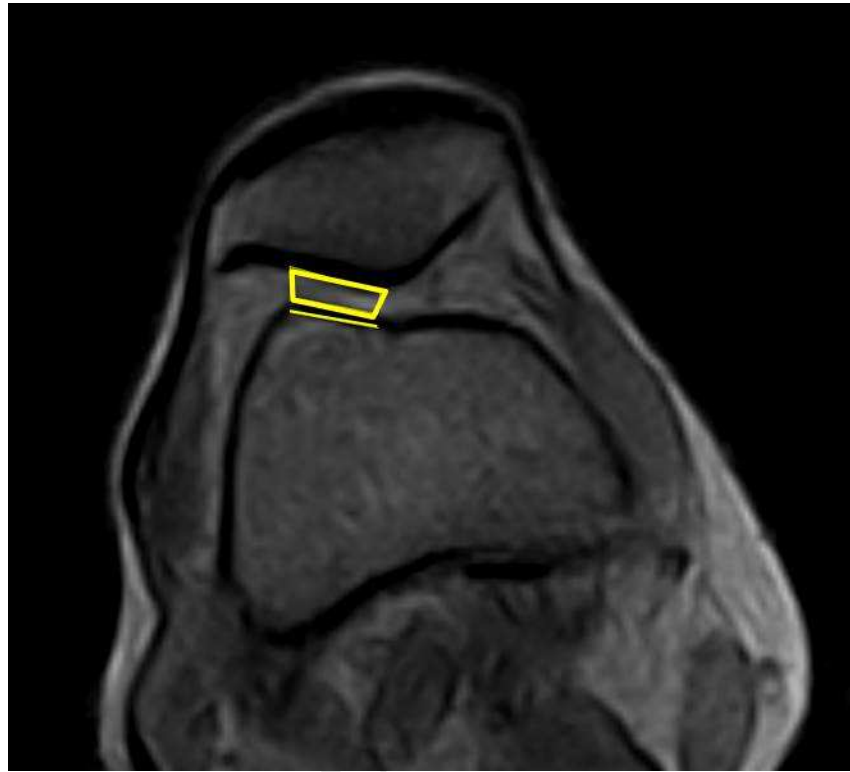


Table 1. Patients' Demographics

	Mean $\pm$ SD
Age (year)	57.17 $\pm$ 8.1
BMI (kg/m <sup>2</sup> )	27.76 $\pm$ 4.39
Gender (female/male)	15/13
K-L PFJ Score 3/2/1	12/6/1
K-L TFJ Score 3/2/1	12/5/2

Legend:

BMI = Body Mass Index

K-L = Kellgren Lawrence

PFJ = Patellofemoral Joint

Table 2 Results:

	Patellar tilt Mean (SD) deg N = 27	Bisect offset Index Mean (SD)% N = 27	Patellar length/ tendon length ratio Mean SD N = 27	Patellofemoral Lateral Contact area cm <sup>2</sup> Mean SD N = 26	Patellofemoral Distance cm Mean SD N =26
Brace	8.63 (6.6)	72.4 (19.1)	1.0 (0.17)	2.73 (2.4)	0.27 (0.12)
No Brace	8.39 (4.9)	73.8 (18.4)	0.96 (0.13)	1.79 (2.2)	0.33 (0.13)
Mean difference	-0.25 (95% CI -1.61, 1.1)	1.39 (95% CI -2.3, 5.1)	0.05 (95% CI -0.01, 0.11)	0.94 (95% CI 0.07, 1.81)	-0.06 (95% CI -0.12, -0.01)
P value	0.71	0.44	0.09	0.04	0.03



