



Academic rigour, journalistic flair

Arts + Culture Business + Economy Education Environment + Energy Health + Medicine Politics + Society **Science + Technology** Brexit

Solving the Piltdown Man crime: how we worked out there was only one forger

August 10, 2016 7.27am BST



The portrait painted by John Cooke in 1915. Back row: (left to right) F. O. Barlow, G. Elliot Smith, Charles Dawson, Arthur Smith Woodward. John Cooke/wikimedia

- Email
- Twitter 11
- Facebook 74
- LinkedIn 16
- Print

It is arguably the greatest scientific crime ever committed in Britain. In December 1912, Charles Dawson, an amateur antiquarian and solicitor archaeologist, presented [part of a human-like skull](#) to the world which he claimed was the “missing link” between ape and human. While the discovery made waves at the time, new dating technologies in the 1950s revealed that these bones were nowhere near old enough to make up such a link and that the fossils had therefore been a hoax.

So who did it? Suspects have ranged from French priest and palaeontologist [Teilhard de Chardin](#) to writer [Sir Arthur Conan Doyle](#), but many archaeologists naturally

Author



Isabelle De Groot
Senior Lecturer in Biological Anthropology, Liverpool John Moores University

Disclosure statement

Isabelle De Groot does not work for, consult, own shares in or receive funding from any company or organisation that would benefit from this article, and has disclosed no relevant affiliations beyond the academic appointment above.

Partners



Liverpool John Moores University provides funding as a member of The Conversation UK.

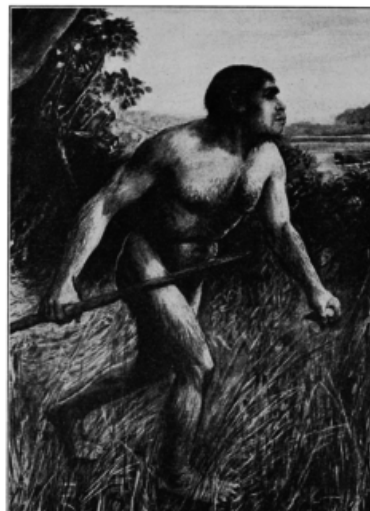
The Conversation's partners

The Conversation UK receives funding from Hefce, Hefcw, SAGE, SFC, RCUK, The Nuffield Foundation, The Ogden Trust, The Royal Society, The Wellcome Trust, Esmée Fairbairn Foundation and The Alliance for Useful Evidence, as well as sixty

[View the full list](#)[Republish this article](#)

suspect Dawson. But the evidence has so far been lacking. And if it were indeed him, how can we be sure he didn't have any accomplices? Now, a century after his death, [new evidence](#) obtained by my colleagues and I points the finger of suspicion even more firmly at Dawson, and suggests a sole hoaxer was responsible.

Dawson announced the discovery of the new fossil hominin – *Eoanthropus dawsoni* – together with palaeontologist Arthur Smith Woodward. It was Dawson who first contacted Woodward, then keeper of palaeontology at the Museum of Natural History in London, about having found a new human fossil. He wrote that the fossil would “rival” the German fossil jaw belonging *Homo heidelbergensis*, the first early human species to live in colder climates.



Reconstruction of *Eoanthropus dawsoni* from 1913. [wikimedia](#)

Scientists had become increasingly interested in finding the missing link between humans and apes ever since the publication of Charles Darwin's “[Descent of Man](#)” in 1871. The discovery of Piltdown Man put Great Britain at the forefront of palaeoanthropology by demonstrating that early humans had big brains and apelike jaws. The publication generated great interest from scientists and the general public alike.

The material consisted of an ape-like jawbone containing two worn molar teeth and parts of a human-like braincase. These were fraudulently planted in a gravel deposit near the village of Piltdown, in Sussex, UK. Associated with these were primitive stone tools and fragmentary fossil mammals, all stained dark reddish-brown like the gravels, suggesting an early [Pleistocene](#) or [Pliocene date](#) (2.6m years or even older). After Dawson's death, a second collection of skull fragments and a molar tooth which Dawson had told Smith Woodward originated from a second site – referred to as Piltdown II – were presented to the museum.



Piltdown man evidence. Judy BreckJ, CC BY-SA

Very few scientists of the time were allowed to study the “original” fossils and were given plaster cast copies instead. But over the next 40 years *Eoanthropus* became increasingly marginalised as ancient hominin fossils such as “[Peking Man](#)” were

We believe in the free flow of information. We use a [Creative Commons Attribution NoDerivatives](#) licence, so you can republish our articles for free, online or in print.

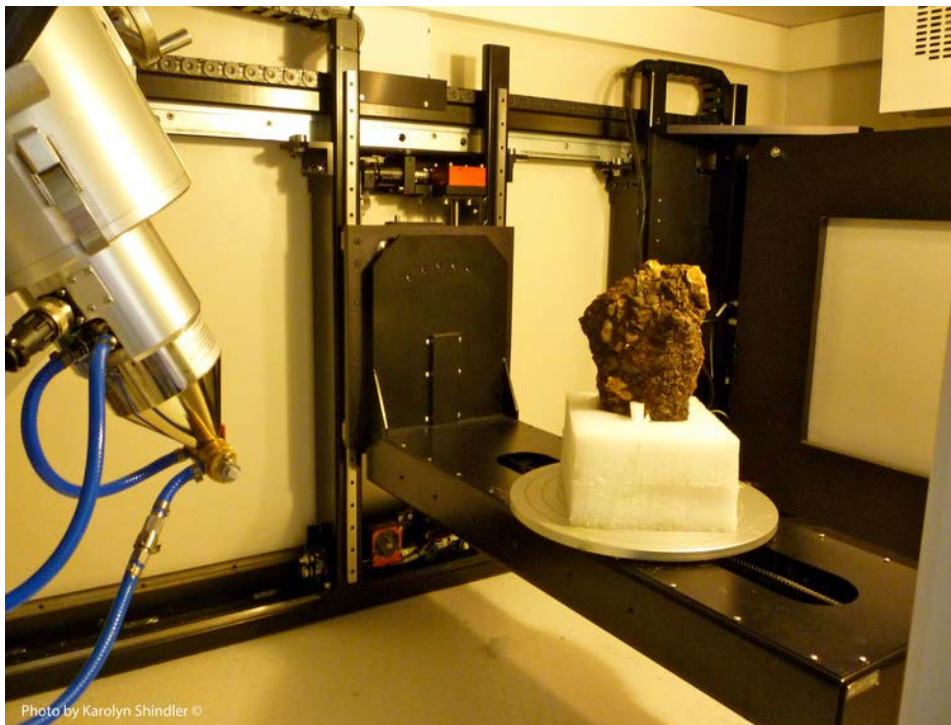
Republish

discovered in China, Indonesia and Africa, none of which showed the peculiar combination of an ape-like jaw and human-like braincase found in Piltdown man. In 1953, scientists decided to apply new chemical tests to ascertain the age of the Piltdown Man fossils. They discovered they were likely [only a few hundred](#) rather than thousands of years old.

Piecing together the evidence

Our analyses, published in Royal Society Open Science, were inspired by new and emerging technologies in the field of palaeoanthropology: ancient DNA analyses, CT scanning and X-ray tomography. Solving the Piltdown crime is still important now as it stands as a cautionary tale to scientists not to be blinded by preconceived ideas but to remain objective and to subject even their own findings to scientific scrutiny.

Using DNA analysis we could show that the orangutan material used to forge the Piltdown I jaw and teeth as well as the Piltdown II molar tooth very likely originated from a single orangutan specimen related most closely to the orangutans now occupying Borneo. We also know that two or perhaps three possibly medieval humans were used to make up the cranial “fossils”. But as we were unable to extract DNA from the bones we do not know where these were acquired.



Gravel block from Piltdown inside CT scanner. Author provided

We also discovered that the whole collection of bones were subject to the same treatment as the orangutan material. Using CT scans to investigate the inside of the bones we noticed that several of the bones and teeth were loaded with gravel that was held in place with pebble plugs. Adding gravel would not only have made the bones heavier and feel more like fossils but they would also appear to have been lying in the gravels for a while. This gravel originated from sediment similar to that

found at the Piltdown site.

A silicate dental putty was used in both assemblages to restore the human vault bones; to hold the gravel plugs in place in the ear hole in the skull; to restore the first teeth in the orangutan jawbone and to position the teeth back into place in their jaw after grinding them down to look more like used human teeth. The consistency in techniques and the use of a limited number of specimens to create both the Piltdown I and Piltdown II material seems to suggest a single forger was responsible.

Dawson remains the main suspect in the case of Piltdown Man. He is the only person who was present at every discovery and the only one to have seen the Piltdown II site. The question remains: what would have driven an apparently successful country solicitor, with a reputation as a geologist, archaeologist and local historian, and with an impressive collection of fossils held in the British Museum, to turn into a serial forger?

Our own library and archival research has shown that Dawson [was responsible](#) for at least 38 forgeries (for example, the Roman inscribed tiles from Pevensey and a statuette excavated by Dawson during the late 1800s were found to be fakes too) .

It [has been suggested](#) that his motive was scientific recognition and, in particular, his ambition to be elected a fellow of the Royal Society. Dawson wrote more than 50 publications but none up until Piltdown appears to have greatly furthered his career. He and his wife wrote letters asking for his recognition but even though he was nominated as a fellow, his nomination for election was not successful. Dawson died on August 10 1916 – almost exactly 100 years ago. Had he lived a bit longer, he may yet have achieved his ambition.

Anthropology Archaeology Fraud Forgery Hoax

Tweet

Share

Get newsletter

You might also like

Extraordinary ‘missing link’ fossil fish found in China

Age of jawbones mean the origins of humans just got older

A decade on and the Hobbit still holds secrets

New fossils confirm diversity was the rule for human evolution

2 Comments

Oldest Newest

Comment on this article



William Stevenson

Recommend

Thanks very much! I have been reading about this story for years- every now and then another article would crop up in New Scientist etc. but I can't remember who came out as the 'favourite' as the fraud. It seems to have been nailed down now, and I'm pleased to see that, as in present day crimes, the guilty person is usually the obvious one.

22 days ago • Report

Reply



Edmund Weiner

logged in via Twitter

Recommend

I'm delighted that the use of present-day technology has confirmed everything that J. S. Weiner uncovered in 1953. As it is customary for scientific papers to cite previous research, it would be good to see his pioneering exposé acknowledged in your report. In all other ways, it is a terrific piece of work. —Edmund Weiner (son of the above).

18 days ago • Report

Reply

Most popular on The Conversation

[How three-day weekends can help save the world \(and us too\)](#)

[What on Earth are they doing to our chocolate bars?](#)

[We've been wrong about the origins of life for 90 years](#)

[Sloths aren't lazy – their slowness is a survival skill](#)

[The science of naked attraction](#)

[We may be able to treat depression with anti-inflammatory drugs – here's why](#)

[Any job isn't necessarily a good job for people out of work](#)

[How a nasty, brain-eating parasite could help us fight cancer](#)

[Three of Namibia's most famous lion family were poisoned – why?](#)

[How a 'weather bomb' shook the Earth – and why that's not an earthquake](#)

Events

[Migration and citizenship: Evidence from two referendums — Paisley, Scotland, Renfrewshire](#)

[Radical Technology Revisited — Corsham, Wiltshire](#)

[How can we create more just and less unequal creative cities? — London, Islington](#)

[Lessons from the Edge with Aldo Kane. — Edinburgh, Midlothian](#)

[The American Presidential Election of 2016 \(so far\): Sore Losers and Glass Ceilings — London, London, City of](#)

MORE EVENTS

Expert Database

Find experts with knowledge in:*

THE CONVERSATION

Community

[Community standards](#)

[Republishing guidelines](#)

[Friends of The Conversation](#)

[Research and Expert Database](#)

[Events](#)

[Our feeds](#)

Company

[Who we are](#)

[Our charter](#)

[Our team](#)

[Our blog](#)

[Partners and funders](#)

[Contributing institutions](#)

Stay informed

[Subscribe to our Newsletters](#)

United Kingdom

Follow us on social media



[Donate](#)

[Resource for media](#)

[Contact us](#)

[Privacy policy](#) [Terms and conditions](#) [Corrections](#)

Copyright © 2010–2016, The Conversation Trust (UK) Limited